

To join our research group on TELEGRAM, please click on the links - <https://bit.ly/37T17JR> and <https://bit.ly/2svtU7k>

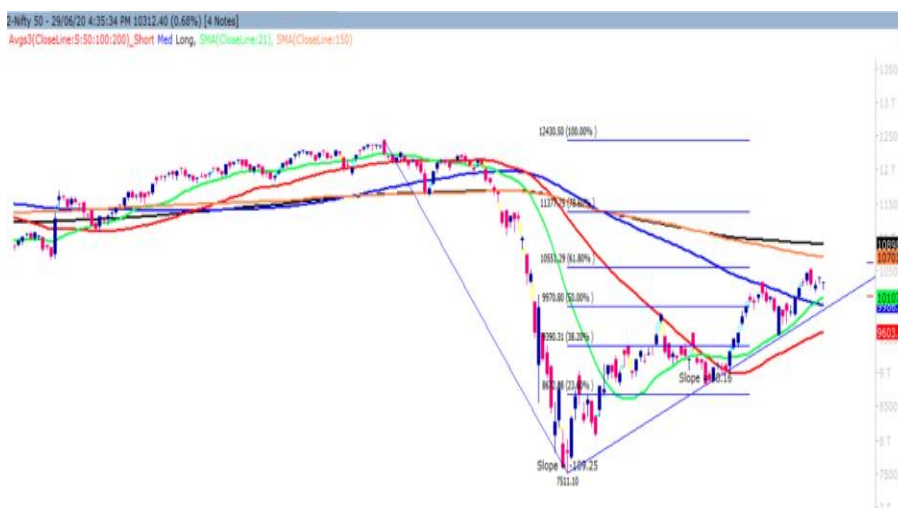
Wednesday, 01st July, 2020

Indian Indices	Last Price	(%) Chg
BSE	34915.80	-0.13
NSE	10302.10	-0.10
World Indices	Last Price	(%) Chg
Dow Jones	25812.88	0.85
Nasdaq	10058.77	1.87
Nikkei	22246.20	-0.19
Hang Seng	--	--
FTSE	6169.74	-0.90
Commodity	Last Price	(%) Chg
GOLD(\$/ounce)	1798.60	-0.11
Silver (\$/Ounce)	18.52	-0.11
Crude (\$/BBL)	41.74	1.14
Aluminium spot (\$/mt)	1621.25	0.25
Copper SPOT (\$/mt)	6090.75	0.86
Lead Spot (\$/MT)	1786.50	0.42
Natural gas \$/MMBtu	1.72	-1.71
Currency	Last Price	(%) Chg
USD-INR	75.77	-0.04
EUR-INR	84.91	-0.48
Bond	Last Price	(%) Chg
India 10 Yr Bond yield	5.88	-0.25

52 Wk High (A group)			52 Wk Low (A group)		
Company	Close Price	52 Wk High	Company	Close Price	52 Wk Low
ESCORT	1040	1061	--	--	--
GUJGAS	318	324	--	--	--
IDBIBANK	43.80	43.80	--	--	--
TATACOM	611	646	--	--	--
--	--	--	--	--	--

Source: BSE

Market Technical Outlook



Nifty opened higher but was unable to sustain the opening gains which dragged down nifty to close marginally in red. On the daily chart, we are observing three consecutive “Doji” candlestick patterns which suggest indecisiveness prevailing at current level. In coming trading session if prices traded above 10410 then it may test 10500 - 10550 levels. On the downside, 10200 - 10100 levels may act as support for the day.

We maintain our view that 10200 – 10070 is strong demand zone and as long as Nifty holds the mentioned demand zone, we are likely to witness upside momentum. Hence cautiously positive approach at current level should be adopted as stock specific move is likely to continue.

News for stocks

--	--
--	--

Foreign Institutional Investments (FII's) Activities

Name of Segment	Net Buyer/seller	Rs In Cr
Index Futures	Net Buy	366.66
Stock Futures	Net Buy	491.09
Net Future Position	Net Buy	857.75
Index Options	Net Buy	1264.51
Stock Options	Net Sell	-38.51
Net Options Position	Net Buy	1226.00
FII In cash Segment	Net Sell	-2000.08
DII In cash Segment	Net Buy	2051.31
Net Cash Position	Net Buy	51.23

Guru Call: From the expert's desk

Company	Reco Date	Reco Price (Buy on dips)	High till date	Return%
Aditiya Birla Capital	22-Nov-19	95.75	115.35	20.47%
Asian Paints Ltd.	30-Mar-17	1068.10	1916.70	79.45%
Avenue Supermarts Ltd.	31-Jul-17	898.55	2560.00	184.90%
Axis Bank Ltd.	10-Apr-18	519.30	827.75	59.40%
Bajaj Finance Ltd.	11-Oct-18	2271.00	4923.40	116.79%
Bajaj Finserv Ltd	1-Nov-16	3416.80	9950.00	191.21%
Bajaj Holdings And Investment Ltd	19-May-16	1499.10	3950.00	163.49%
Bandhan Bank Ltd.	19-Dec-18	556.40	650.00	16.82%
Bharat Petroleum Corporation Ltd.	23-Oct-19	531.50	549.00	3.29%
Century Textile and Industries Ltd	25-Nov-16	326.00	656.90	101.50%
Cipla Ltd	20-Mar-17	597.30	678.45	13.59%
Colgate Palmolive	16-Sep-19	1314.00	1642.60	25.01%
Container Corporation	22-Nov-19	577.00	603.00	4.51%
Dabur India	22-Oct-19	466.00	525.00	12.66%
DLF Ltd	10-Apr-19	194.30	265.90	36.85%
Emami Limited	26-Jun-19	290.35	357.70	23.20%
Godrej Industries Ltd.	12-Feb-18	550.70	657.60	19.41%
Godrej Properties Ltd.	19-Dec-18	685.30	1189.25	73.54%
Grasim Industries Ltd.	31-May-17	1132.50	1331.00	17.53%
Havells India Ltd.	8-Dec-17	525.75	806.85	53.47%
Housing Development Finance Corp Ltd	19-Dec-17	1720.00	2499.90	45.34%
HDFC Asset Management Company Ltd.	19-Dec-18	1572.90	3844.00	144.39%
HDFC Bank Limited	10-Nov-16	639.00	1305.50	104.30%
HDFC Life Insurance Co Ltd	19-Jan-18	485.05	646.40	33.26%
Hindustan Unilever Ltd.	13-Nov-17	1290.70	2308.20	78.83%
ICICI Bank Ltd.	6-Apr-18	278.65	552.20	98.17%
ICICI Prudential Life Insurance Company Ltd.	28-Jun-18	375.80	537.30	42.97%
ICICI Lombard General Insurance	19-Sep-19	1154.90	1440.40	24.72%
Infosys Ltd.	17-Aug-17	487.60	847.00	73.71%
Kansai Nerolac Paints	16-Dec-19	529.85	551.00	3.99%
Kotak Mahindra Bank Ltd	10-Nov-16	822.10	1740.00	111.65%
Mahindra & Mahindra Ltd.	5-Jun-17	709.25	993.00	40.01%
Manappuram Finance Ltd.	24-Apr-18	119.20	194.80	63.42%
Mahanagar Gas	15-Nov-19	1029.00	1246.20	21.11%
Marico Ltd.	4-Apr-18	325.00	404.00	24.31%
Nestle India Ltd.	27-Sep-18	9729.40	16835.15	73.03%
Oberoi Realty Ltd.	23-Nov-17	508.60	641.70	26.17%
Phoenix Mills Limited	7-Jul-19	655.15	979.00	49.43%
Pidilite Industries Limited	4-Oct-16	681.60	1661.00	143.69%
Prestige Estates Projects Limited	6-Jun-19	286.70	426.00	48.59%
Nam-India	25-Nov-18	377.00	452.90	20.13%
Rites Ltd.	19-Dec-18	226.96	331.00	45.84%
RBL Bank	22-Nov-19	334.00	391.20	17.13%
State Bank Of India	28-Aug-18	308.00	373.80	21.36%
Shipping Corporation	22-Nov-19	64.00	65.95	3.05%
Tata Chemicals Limited	24-Dec-19	296.89	339.70	14.42%
Tata Consumer	29-Jun-17	149.15	408.00	173.55%
Tata Consultancy Services Ltd.	8-Jan-18	1344.60	2296.20	70.77%
Trent Ltd.	19-Dec-18	348.40	794.00	127.90%
Ultratech Cement Ltd.	19-Dec-18	4084.60	4904.95	20.08%
Voltas Ltd.	27-Mar-18	613.90	741.00	20.70%
Whirlpool Of India Ltd.	7-Dec-16	872.25	2555.00	192.92%
Zee Entertainment	22-Nov-19	345.00	362.00	4.93%

Technical Levels for Nifty 50 Companies

Company	Closing 30-06-2020	Buy/Sell Trigger	Resistance 1	Resistance 2	Support 1	Support 2
ADANI PORTS	343.90	345.37	348.33	352.77	340.93	337.97
ASIAN PAINT	1687.45	1695.70	1709.75	1732.05	1673.40	1659.35
AXIS BANK	406.65	408.50	412.95	419.25	402.20	397.75
BAJAJ-AUTO	2826.05	2851.50	2888.00	2949.95	2789.55	2753.05
BAJAJ FINSV	5845.15	5901.53	5987.27	6129.38	5759.42	5673.68
BAJ FINANCE	2831.00	2861.22	2906.43	2981.87	2785.78	2740.57
BHARTIARTL	559.85	564.75	572.10	584.35	552.50	545.15
BPCL	374.00	378.48	384.77	395.53	367.72	361.43
BRITANNIA	3603.80	3586.27	3632.53	3661.27	3557.53	3511.27
CIPLA	640.25	642.72	647.43	654.62	635.53	630.82
COALINDIA	132.85	134.12	135.88	138.92	131.08	129.32
DRREDDY	3944.95	3960.45	3995.40	4045.85	3910.00	3875.05
EICHER MOT	18334.30	18355.10	18509.20	18684.10	18180.20	18026.10
GAIL	102.15	102.65	103.95	105.75	100.85	99.55
GRASIM	619.70	619.92	628.53	637.37	611.08	602.47
HCLTECH	556.85	556.97	560.68	564.52	553.13	549.42
HDFC	1754.65	1764.85	1782.50	1810.35	1737.00	1719.35
HDFC BANK	1065.85	1066.90	1077.50	1089.15	1055.25	1044.65
HEROMOTOCO	2546.95	2542.43	2572.87	2598.78	2516.52	2486.08
HINDALCO	146.20	147.67	150.13	154.07	143.73	141.27
HINDUNILVR	2180.00	2183.32	2196.63	2213.27	2166.68	2153.37
ICICIBANK	351.45	350.73	355.17	358.88	347.02	342.58
INDUSINDBK	474.80	480.27	488.53	502.27	466.53	458.27
INFRA TEL	221.50	221.58	224.52	227.53	218.57	215.63
INFY	735.95	733.05	741.85	747.75	727.15	718.35
IOC	85.35	86.18	87.62	89.88	83.92	82.48
ITC	194.65	196.02	198.03	201.42	192.63	190.62
JSW STEEL	189.35	190.92	194.03	198.72	186.23	183.12
KOTAK BANK	1360.45	1359.47	1373.88	1387.32	1346.03	1331.62
LT	943.65	942.40	953.40	963.15	932.65	921.65
M&M	510.70	511.10	515.10	519.50	506.70	502.70
MARUTI	5838.30	5798.08	5914.72	5991.13	5721.67	5605.03
NESTLE IND	17174.45	17075.45	17397.00	17619.55	16852.90	16531.35
NTPC	95.80	96.25	97.30	98.80	94.75	93.70
ONGC	81.35	81.85	83.05	84.75	80.15	78.95
POWERGRID	174.85	176.27	178.53	182.22	172.58	170.32
RELIANCE	1704.10	1713.55	1731.55	1759.00	1686.10	1668.10
SBIN	178.45	179.53	181.82	185.18	176.17	173.88
SHREECEM	23051.05	22907.67	23473.38	23895.72	22485.33	21919.62
SUN PHARMA	472.95	475.57	481.33	489.72	467.18	461.42
TATAMOTORS	98.25	99.28	101.27	104.28	96.27	94.28
TATA STEEL	326.70	329.15	335.20	343.70	320.65	314.60
TCS	2082.15	2089.70	2104.35	2126.55	2067.50	2052.85
TECHM	543.40	544.62	547.68	551.97	540.33	537.27
TITAN	949.85	956.07	965.73	981.62	940.18	930.52
ULTRACEMCO	3893.55	3873.30	3924.60	3955.65	3842.25	3790.95
UPL	425.20	431.22	440.43	455.67	415.98	406.77
VEDL	106.40	107.40	109.40	112.40	104.40	102.40
WIPRO	219.65	219.87	221.73	223.82	217.78	215.92
ZEEL	171.10	172.17	174.73	178.37	168.53	165.97

NIFTY 50 STOCKS BELOW 200SMA

SCRIP NAME	SMA 200	CLOSING (30-06-2020)
WIPRO	226.52	219.7
ZEEL	232.27	171.3
LT	1171.89	945
ITC	215.06	195.25
TATASTEEL	367.92	327.3
SBIN	261.39	179.15
GRASIM	670.39	617.05
TATAMOTORS	131.64	98.65
HDFC	2052.94	1761
HINDALCO	168.2	147.35
BPCL	427.42	373.75
ICICIBANK	438.92	352
HDFCBANK	1124.22	1065.95
ASIANPAINT	1728.34	1687
IOC	110.9	85.7
AXISBANK	604.4	407.3
ONGC	105.96	81.5
TITAN	1111.81	952.25
VEDL	123.93	106.3
UPL	497.66	426.8
GAIL	111.09	101.55
INDUSINDBK	1019.38	475.2
BAJFINANCE	3510.48	2828
ADANIPTS	348.59	346.15
POWERGRID	182.08	174.8
ULTRACEMCO	3975.91	3890.4
KOTAKBANK	1493.02	1353.2
TECHM	680.43	543.6
JSWSTEEL	222.9	189.1
NTPC	107.13	95.3
MARUTI	6337.94	5830.15
BAJAJ-AUTO	2863.62	2830.1
BAJAJFINSV	7511.19	5839.95
COALINDIA	173.61	133.15
INFRATEL	222.6	221.25

Weekly Expiry Most Active Nifty Call Option

Symbol	Expiry Date	Strike Price	Highest Open Interest (OI)
NIFTY	02-Jul-2020	10500	3275550
NIFTY	02-Jul-2020	10400	3299025
NIFTY	02-Jul-2020	11000	2971050

Weekly Expiry Most Active Nifty Put Option

Symbol	Expiry Date	Strike Price	Highest Open Interest (OI)
NIFTY	02-Jul-2020	10000	2833875
NIFTY	02-Jul-2020	10300	1975275
NIFTY	02-Jul-2020	10200	1903725

Securities in Ban For Trade Date 01-07-2020

IDEA

Bulk Deals (BSE)

N/A

Bulk Deals (NSE)

N/A

Note- Executed on 30th Jun 2020. Bulk Deal Buy/Sell done by fund house is considered.
Research Analyst Registration No.

INH000002764

Contact

SMS: 'Arihant' to 56677

Website
www.arihantcapital.com
mail Id
arihant.research@arihantcapital.com

**Arihant is Forbes Asia's '200 Best under a \$Billion' Company
 'Best Emerging Commodities Broker' awarded by UTV Bloomberg**

Disclaimer: This document has been prepared by Arihant Capital Markets Limited (hereinafter called as Arihant) and its subsidiaries and associated companies. This document does not constitute an offer or solicitation for the purchase and sale of any financial instrument by Arihant. Receipt and review of this document constitutes your agreement not to circulate, redistribute, retransmit or disclose to others the contents, opinions, conclusion, or information contained herein. This document has been prepared and issued on the basis of publicly available information, internally developed data and other sources believed to be reliable. Whilst meticulous care has been taken to ensure that the facts stated are accurate and opinions given are fair and reasonable, neither the analyst nor any employee of our company is in any way is responsible for its contents and nor is its accuracy or completeness guaranteed. This document is prepared for assistance only and is not intended to be and must not alone be taken as the basis for an investment decision. All recipients of this material should before dealing and or transacting in any of the products referred to in this material make their own investigation, seek appropriate professional advice. The investments discussed in this material may not be suitable for all investors. The recipient alone shall be fully responsible/are liable for any decision taken on the basis of this material. Arihant Capital Markets Ltd (including its affiliates) or its officers, directors, personnel and employees, including persons involved in the preparation or issuance of this material may; (a) from time to time, have positions in, and buy or sell or (b) be engaged in any other transaction and earn brokerage or other compensation in the financial instruments/products discussed herein or act as advisor or lender/borrower in respect of such securities/financial instruments/products or have other potential conflict of interest with respect to any recommendation and related information and opinions. The said persons may have acted upon and/or in a manner contradictory with the information contained here and may have a position or be otherwise interested in the investment referred to in this document before its publication. The user of this report assumes the entire risk of any use made of this data/report. Arihant especially states that it has no financial liability, whatsoever, to the users of this report.

Arihant Capital Markets Ltd

#1011 Solitaire Corporate Park Building No.10 1st Floor
 Andheri Ghatkopar Link Road Chakala Andheri (E) Mumbai-400093
 T. 022-42254800. Fax: 022-42254880
www.arihantcapital.com