

To join our research group on TELEGRAM, please click on the links - <https://bit.ly/2Rt4NyS> and <https://bit.ly/3ciqvDn>

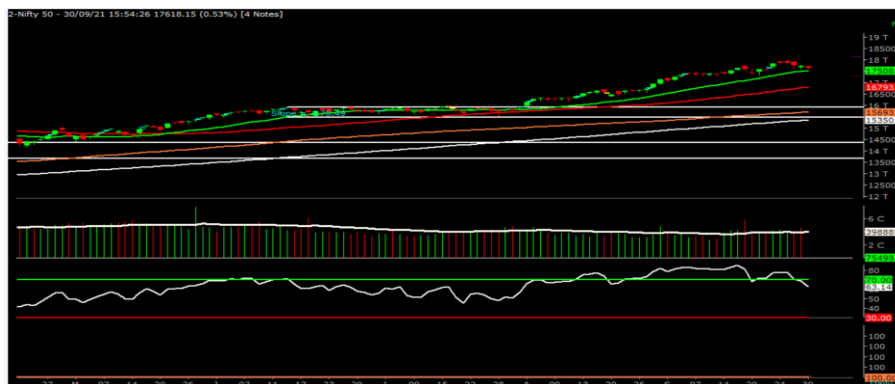
Friday, 01st Oct 2021

Indian Indices	Last Price	(%) Chg
NSE	17618.15	-0.53
BSE	59126.36	-0.48
World Indices	Last Price	(%) Chg
Dow Jones	33843.92	-1.59
Nasdaq	14448.58	-0.44
Nikkei	28841.79	-2.08
Hang Seng	--	--
FTSE	7086.42	-0.31
Commodity	Last Price	(%) Chg
GOLD(\$/ounce)	1756.30	-0.03
Silver (\$/Ounce)	22.10	0.22
Crude (\$/BBL)	78.20	-0.14
Aluminium spot (\$/mt)	2860.00	0.09
Copper SPOT (\$/mt)	8903.25	-0.53
Lead Spot (\$/MT)	2101.75	-0.44
Natural gas \$/MMBtu	5.93	1.19
Currency	Last Price	(%) Chg
USD-INR	74.30	0.04
EUR-INR	86.00	-0.14
Bond		
India 10 Yr Bond yield	6.22	0.27

52 Wk High (A group)			52 Wk Low (A group)		
Company	Close Price	52 Wk High	Company	Close Price	52 Wk Low
BHRTELEC	205	212	--	--	--
CGPOWER	117	117	--	--	--
CIPLA	987	1005	--	--	--
COALIND	185	195	--	--	--
GMRINFR	38	39	--	--	--

Source: BSE

Market Technical Outlook



Nifty opened lower traded with negative bias to close in red. On the daily chart we are observing two consecutive narrow range body formations which suggests indecisiveness prevailing at current level. We maintain our stance that the 21-daySMA (17485) holds significance going forward. In coming trading session if Nifty for first hour trades above 17680 level then it may test 17750 - 17850levels. On the downside, 17500 - 17420 levels.

We still continue to maintain our stance that stock specific activity is likely to continue.

Foreign Institutional Investments (FII's) Activities

Name of Segment	Net Buyer/seller	Rs In Cr
Index Futures	Net Sell	-2468.25
Stock Futures	Net Sell	-2283.31
Net Future Position	Net Sell	-4751.56
Index Options	Net Buy	1929.13
Stock Options	Net Buy	1707.81
Net Options Position	Net Buy	3636.94
FII In cash Segment	Net Sell	-2225.60
DII In cash Segment	Net Buy	97.18
Net Cash Position	Net Sell	-2128.42

Guru Call: From the expert's desk

Company	Reco Date	Reco Price (Buy on dips)	High till date	Return%
Accelya Solutions India Ltd	10-Jun-21	1203.90	1539.40	27.87%
Aditya Birla Capital Ltd	13-Aug-21	206.60	210.95	2.11%
Aditya Birla Fashion and Retail Ltd	08-Feb-21	164.40	231.65	40.91%
Alkem	08-Jul-20	2427.00	3558.90	46.64%
Apcotex Industries Limited	13-Aug-21	342.90	350.05	2.09%
Asian Paints Ltd.	30-Mar-17	1068.10	3179.50	197.68%
Astec LifeSciences Limited	09-Jul-21	1360.70	1487.00	9.28%
Avenue Supermarts Ltd.	31-Jul-17	898.55	3448.95	283.84%
Axis Bank Ltd.	10-Apr-18	519.30	827.75	59.40%
Bajaj Finserv Ltd	1-Nov-16	3416.80	13110.00	283.69%
Bajaj Holdings And Investment Ltd	19-May-16	1499.10	4060.00	170.83%
Birla Corporation Limited	28-Jun-21	1240.00	1450.80	17.00%
Britannia	12-June-20	3366.00	4010.00	19.13%
Cadila	03-Apr-20	274.00	673.70	145.88%
CAMS	08-Oct-20	1334.90	3740.65	180.22%
CDSL	17-Sep-20	485.90	1579.00	224.96%
Century Textile and Industries Ltd	25-Nov-16	750.40	1471.20	96.06%
CESC Ltd	08-Jun-21	758.20	870.90	14.86%
CG Power and Industrial Solutions Ltd	10-Feb-21	45.25	91.95	103.20%
Chola finance	25-Sep-20	238.70	600.95	151.76%
Chola Holding	23-Sep-20	391.80	711.00	81.47%
Cipla Ltd	20-Mar-17	597.30	997.00	66.92%
Colgate Palmolive	16-Sep-19	1314.00	1794.85	36.59%
Dabur India	22-Oct-19	466.00	605.00	29.83%
DFM Foods Ltd	03-Feb-21	409.05	453.80	10.94%
DLF Ltd	10-Apr-19	194.30	338.80	74.37%
Dr Reddy	04-Aug-20	4530.00	5614.60	23.94%
Emami Limited	26-Jun-19	290.35	578.50	99.24%
Finolex Cables Ltd	08-Feb-21	368.80	557.70	51.22%
Firstsource Solutions Ltd	13-Aug-21	201.10	209.35	4.10%
Fortis	14-Jul-20	127.00	253.90	99.92%
Gati Ltd	13-Aug-21	148.90	154.20	3.56%
Gillette India Limited	11-Jun-21	5847.00	6249.00	6.88%
Glaxosmithkline Pharmaceuticals Ltd	27-Aug-20	1455.75	1807.50	24.16%
Godrej Consumer Products Limited	16-Jun-20	634.00	980.70	54.68%
HDFC Asset Management Company Ltd.	19-Dec-18	1572.90	3844.00	144.39%
HDFC Bank Limited	10-Nov-16	639.00	1641.00	156.81%
HDFC Life Insurance Co Ltd	19-Jan-18	485.05	746.00	53.80%
Hero Motocorp Ltd	29-Sep-20	3174.95	3629.05	14.30%
Hindustan Unilever Ltd.	13-Nov-17	1290.70	2614.30	102.55%
Housing Development Finance Corp Ltd	19-Dec-17	1720.00	2896.00	68.37%
ICICI Bank Ltd.	06-Apr-18	278.65	679.40	143.82%
ICICI Lombard General Insurance	19-Sep-19	1154.90	1626.45	40.83%
ICICI Prudential Life Insurance Company Ltd.	28-Jun-18	375.80	660.20	75.68%
ICICI Securities Ltd	24-Sep-20	466.65	802.00	71.86%
Indusindbnk	08-Jun-20	451.00	1119.50	148.23%
Infosys Ltd.	17-Aug-17	487.60	1596.85	227.49%
INOX Leisure Ltd	13-Aug-21	327.80	332.70	1.49%
Ion Exchange (India) Ltd	01-June-21	1464.95	2947.00	101.17%
Jubilant Ingrevia Ltd	22-Jul-21	623.00	640.00	2.73%
Kotak Mahindra Bank Ltd	10-Nov-16	822.10	2049.00	149.24%
L&T Finance Holdings Ltd	03-Dec-20	84.05	113.40	34.92%

Guru Call: From the expert's desk

Company	Reco Date	Reco Price (Buy on dips)	High till date	Return%
LIC Housing Finance Limited	06-Jan-21	408.30	542.45	32.86%
Mahanagar Gas	15-Nov-19	1029.00	1284.40	24.82%
Mahindra & Mahindra Ltd.	05-Jun-17	709.25	993.00	40.01%
Marico Ltd.	04-Apr-18	325.00	549.60	69.11%
Maruti Suzuki India Ltd	13-Aug-20	5988.85	8329.00	39.08%
Nestle India Ltd.	27-Sep-18	9729.40	18844.00	93.68%
NRB Bearings Limited	18-Jun-21	134.30	154.40	14.97%
Oberoi Realty Ltd.	23-Nov-17	508.60	729.00	43.33%
Oracle Financial Services Software Ltd.	13-Aug-21	4618.45	4789.00	3.69%
PEL	02-Sep-20	1246.25	2520.90	102.28%
Phoenix Mills Limited	07-Jul-19	655.15	979.00	49.43%
Pidilite Industries Limited	04-Oct-16	681.60	2333.95	242.42%
Poonawalla Fincorp Ltd	13-Aug-21	175.45	197.85	12.77%
Procter & Gamble Hygiene & Health Care	13-Aug-21	12869.65	13004.95	1.05%
PVR Limited	13-Aug-21	1412.25	1445.00	2.32%
Raymond	25-Sep-20	263.55	473.90	79.81%
RBL Bank	25-Sep-20	164.95	274.30	66.29%
Reliance	22-Apr-20	1351.00	2369.35	75.38%
Rites Ltd.	19-Dec-18	226.96	331.00	45.84%
SBI Card	16-Jul-20	719.00	1139.50	58.48%
SBI Life	20-May-20	715.00	1064.95	48.94%
Shilpa Medicare Ltd	20-Jul-21	661.75	668.90	1.08%
Shree Renuka Sugars Limited	13-Aug-21	26.80	28.10	4.85%
Solar Industries India Ltd	13-Aug-21	1760.05	1775.00	0.85%
State Bank of India	03-Feb-21	335.95	441.95	31.55%
Sun Pharma	07-Aug-20	525.00	721.85	37.50%
Sun TV Network Ltd.	13-Aug-21	525.35	538.00	2.41%
Syngene International Ltd	24-Sep-20	565.70	700.00	23.74%
Tata Chemicals Limited	24-Dec-19	296.89	833.95	180.90%
Tata Coffee Ltd.	28-Jun-21	183.35	198.65	8.34%
Tata Consultancy Services Ltd.	08-Jan-18	1344.60	3399.65	152.84%
Tata Consumer	29-Jun-17	149.15	786.85	427.56%
Trent Ltd.	19-Dec-18	348.40	947.95	172.09%
Ultratech Cement Ltd.	19-Dec-18	4084.60	7544.00	84.69%
UTI Asset Management Company Ltd	13-Aug-21	1043.75	1147.00	9.89%
Vedanta Ltd	28-Jun-21	260.80	276.15	5.89%
Voltas Ltd.	27-Mar-18	613.90	1132.00	84.39%
Whirlpool Of India Ltd.	07-Dec-16	872.25	2787.00	219.52%
Wipro Limited	13-Aug-21	615.50	639.20	3.85%
Zee Entertainment	22-Nov-19	345.00	362.00	4.93%
Zensar Technologies Limited	13-Aug-21	417.90	461.50	10.43%
--	--	--	--	--
--	--	--	--	--
--	--	--	--	--
--	--	--	--	--
--	--	--	--	--
--	--	--	--	--
--	--	--	--	--
--	--	--	--	--
--	--	--	--	--
--	--	--	--	--
--	--	--	--	--
--	--	--	--	--
--	--	--	--	--
--	--	--	--	--
--	--	--	--	--
--	--	--	--	--
--	--	--	--	--
--	--	--	--	--
--	--	--	--	--
--	--	--	--	--
--	--	--	--	--
--	--	--	--	--

NIFTY 50 STOCKS BELOW 200SMA

SCRIP NAME	SMA 200	CLOSING (30-09-2021)
DRREDDY	4964.43	4880.70
BPCL	439.13	432.20
HEROMOTOCO	3013.82	2832.50
BAJAJ-AUTO	3842.41	3832.65
--	--	--
--	--	--
--	--	--
--	--	--
--	--	--
--	--	--
--	--	--

Weekly Expiry Most Active Nifty Call Option

Symbol	Expiry Date	Strike Price	Highest Open Interest (Contracts)
NIFTY	07-Oct-2021	19000	65,204
NIFTY	07-Oct-2021	17700	57,048
NIFTY	07-Oct-2021	17800	50,375

Weekly Expiry Most Active Nifty Put Option

Symbol	Expiry Date	Strike Price	Highest Open Interest (Contracts)
NIFTY	07-Oct-2021	17500	34,782
NIFTY	07-Oct-2021	17600	33,751
NIFTY	07-Oct-2021	17000	29,849

Securities in Ban For Trade Date 01-10-2021

NIL.

Bulk Deals (NSE)

Deal Date	Scrip Name	Client Name	Deal Type	Quantity	Price
30-Sep-21	ASIAN-RE	M/S. PRARTHANA ENTERPRISES	BUY	782507	37.49
30-Sep-21	ASIAN-RE	SUNDARAM MUTUAL FUND	BUY	168128	37.75
30-Sep-21	KIL-RE	TUSK INVESTMENT LIMITED	BUY	705000	8.42
30-Sep-21	ASIAN-RE	M/S. PRARTHANA ENTERPRISES	SELL	1965	37.15
30-Sep-21	BANSWRAS	KOTAK MAHINDRA (INTERNATIONAL) LIMITED	SELL	680000	153.20
30-Sep-21	JUSTDIAL	NALANDA INDIA EQUITY FUND LIMITED	SELL	517765	991.44
30-Sep-21	KIL-RE	STATE BANK OF INDIA	SELL	735113	8.58
30-Sep-21	KIL-RE	SOUTH INDIAN BANK LTD.	SELL	400000	8.64
30-Sep-21	KIL-RE	SOUTH INDIAN BANK	SELL	400000	8.71

Bulk Deals (BSE)

Deal Date	Scrip Name	Client Name	Deal Type	Quantity	Price
30-Sep-21	SAMBANDAM	GENERAL INSURANCE CORPORATION OF INDIA	S	25244	201.82

 Note- Executed on 30th Sep 2021. Bulk Deal Buy/Sell done by fund house is considered

IPO LISTING TODAY

Company Name: Paras Defence and Space Technologies Limited BSE Code: 543367, NSE Symbol: PARAS, Issue Price: Rs 175 per share, Series: BE

Research Analyst Registration No.	Contact	Website	mail Id
INH000002764	SMS: 'Arihant' to 56677	www.arihantcapital.com	arihant.research@arihantcapital.com

**Arihant is Forbes Asia's '200 Best under a \$Billion' Company
 'Best Emerging Commodities Broker' awarded by UTV Bloomberg**

Disclaimer: This document has been prepared by Arihant Capital Markets Limited (hereinafter called as Arihant) and its subsidiaries and associated companies. This document does not constitute an offer or solicitation for the purchase and sale of any financial instrument by Arihant. Receipt and review of this document constitutes your agreement not to circulate, redistribute, retransmit or disclose to others the contents, opinions, conclusion, or information contained herein. This document has been prepared and issued on the basis of publicly available information, internally developed data and other sources believed to be reliable. Whilst meticulous care has been taken to ensure that the facts stated are accurate and opinions given are fair and reasonable, neither the analyst nor any employee of our company is in any way is responsible for its contents and nor is its accuracy or completeness guaranteed. This document is prepared for assistance only and is not intended to be and must not alone be taken as the basis for an investment decision. All recipients of this material should before dealing and or transacting in any of the products referred to in this material make their own investigation, seek appropriate professional advice. The investments discussed in this material may not be suitable for all investors. The recipient alone shall be fully responsible/are liable for any decision taken on the basis of this material. Arihant Capital Markets Ltd (including its affiliates) or its officers, directors, personnel and employees, including persons involved in the preparation or issuance of this material may; (a) from time to time, have positions in, and buy or sell or (b) be engaged in any other transaction and earn brokerage or other compensation in the financial instruments/products discussed herein or act as advisor or lender/borrower in respect of such securities/financial instruments/products or have other potential conflict of interest with respect to any recommendation and related information and opinions. The said persons may have acted upon and/or in a manner contradictory with the information contained here and may have a position or be otherwise interested in the investment referred to in this document before its publication. The user of this report assumes the entire risk of any use made of this data/report. Arihant especially states that it has no financial liability, whatsoever, to the users of this report.

Arihant Capital Markets Ltd

#1011 Solitaire Corporate Park Building No.10 1st Floor
 Andheri Ghatkopar Link Road Chakala Andheri (E) Mumbai-400093
 T. 022-42254800. Fax: 022-42254880
www.arihantcapital.com