

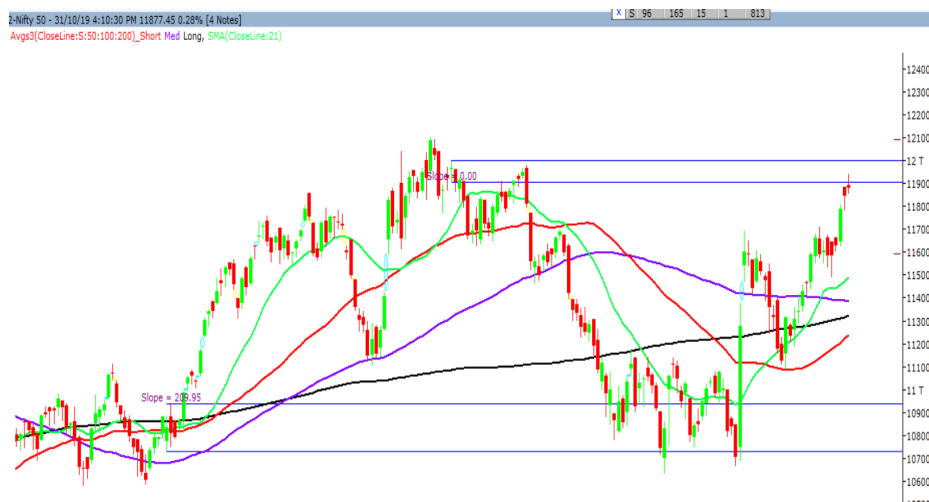
Friday, 01st November, 2019

Indian Indices	Last Price	(%) Chg
BSE	40129.05	0.19
NSE	11881.20	0.31
World Indices		
Dow Jones	27046.23	-0.52
Nasdaq	8292.36	-0.14
Nikkei	22833.23	-0.41
Hang Seng	26970.30	0.23
FTSE	7248.38	-1.12
Commodity	Last Price	(%) Chg
GOLD(\$/ounce)	1512.70	-0.14
Silver (\$/Ounce)	18.06	-0.07
Crude (\$/BBL)	59.72	0.17
Aluminium spot (\$/mt)	1758.25	0.04
Copper SPOT (\$/mt)	5846.25	0.69
Lead Spot (\$/MT)	2173.75	0.73
Natural gas \$/MMBtu	2.63	-0.08
Currency	Last Price	(%) Chg
USD-INR	71.09	0.00
EUR-INR	79.47	0.39
Bond	Last Price	(%) Chg
India 10 Yr Bond yield	6.76	1.45

52 Wk High (A group)			52 Wk Low (A group)		
Company	Close Price	52 Wk High	Company	Close Price	52 Wk Low
ADANIEN	199	201	--	--	--
ASIANPA	1823	1833	--	--	--
BAJAJ-A	3251	3255	--	--	--
BFUTILI	272	280	--	--	--
HUL	2168	2187	--	--	--

Source: BSE

Market Technical Outlook



Nifty opened higher traded in a narrow range with choppiness but finally managed to close in green. On the daily chart we are observing two consecutive spinning top candlestick patterns which give small clue that the preceding up move is losing breath. However, we maintain our stance that there is no sign of weakness but a consolidation at current level cannot be ruled out.

In coming trading session if Nifty opens in the range of 11855 – 11821 then, go long, with a stop loss of 11800 for a target of 11898 – 11911 - 11932 levels.

News for stocks

YESBANK	The bank has received a binding offer for an investment worth \$1.2 billion from a global investor as part of its fund-raising efforts.
AHLUWALIA	Company gets new project worth of Rs 522 crore.
GRSE Q2FY20	Net profit at Rs 59 crore versus Rs 12.8 crore, revenue at Rs 439 crore versus Rs 217.7 crore, YoY.

Foreign Institutional Investments (FII's) Activities

Name of Segment	Net Buyer/seller	Rs In Cr
Index Futures	Net Sell	-343.59
Stock Futures	Net Buy	1368.68
Net Future Position	Net Buy	1025.09
Index Options	Net Buy	6715.85
Stock Options	Net Sell	-173.45
Net Options Position	Net Buy	6542.40
FII In cash Segment	Net Buy	1870.87
DII In cash Segment	Net Sell	-650.73
Net Cash Position	Net Buy	1220.14

Technical Levels for Nifty 50 Companies

Company	Closing 31-10-2019	Buy/Sell Trigger	Resistance 1	Resistance 2	Support 1	Support 2
ADANI PORTS	395.80	396.48	399.32	402.83	392.97	390.13
ASIAN PAINT	1809.60	1815.97	1828.43	1847.27	1797.13	1784.67
AXIS BANK	736.35	739.47	746.88	757.42	728.93	721.52
BAJAJ-AUTO	3247.35	3238.45	3263.90	3280.45	3221.90	3196.45
BAJAJ FINSV	8134.35	8158.77	8217.53	8300.72	8075.58	8016.82
BAJ FINANCE	4027.55	4024.18	4053.37	4079.18	3998.37	3969.18
BHARTIARTL	374.25	371.60	379.45	384.65	366.40	358.55
BPCL	526.60	526.00	531.45	536.30	521.15	515.70
BRITANNIA	3266.60	3288.38	3321.77	3376.93	3233.22	3199.83
CIPLA	466.85	466.57	472.98	479.12	460.43	454.02
COALINDIA	207.55	207.52	209.03	210.52	206.03	204.52
DRREDDY	2783.20	2789.40	2808.70	2834.20	2763.90	2744.60
EICHERMOT	22538.10	22506.43	22711.87	22885.63	22332.67	22127.23
GAIL	137.35	136.55	140.40	143.45	133.50	129.65
GRASIM	768.75	759.83	783.82	798.88	744.77	720.78
HCLTECH	1162.75	1157.10	1175.65	1188.55	1144.20	1125.65
HDFC	2131.90	2127.45	2151.25	2170.60	2108.10	2084.30
HDFC BANK	1230.35	1240.45	1253.80	1277.25	1217.00	1203.65
HEROMOTOCO	2704.20	2703.22	2716.98	2729.77	2690.43	2676.67
HINDALCO	187.90	188.47	190.33	192.77	186.03	184.17
HINDUNILVR	2175.35	2173.97	2188.63	2201.92	2160.68	2146.02
ICICIBANK	463.05	467.03	472.77	482.48	457.32	451.58
INDUSINDBK	1313.20	1315.73	1341.47	1369.73	1287.47	1261.73
INFRA TEL	189.70	186.77	195.93	202.17	180.53	171.37
INFY	685.60	682.38	698.67	711.73	669.32	653.03
IOC	146.80	146.40	149.15	151.50	144.05	141.30
ITC	257.65	258.90	261.60	265.55	254.95	252.25
JSWSTEEL	228.00	230.52	233.98	239.97	224.53	221.07
KOTAK BANK	1574.50	1581.83	1597.67	1620.83	1558.67	1542.83
LT	1473.05	1475.60	1483.95	1494.85	1464.70	1456.35
M&M	606.45	610.62	617.48	628.52	599.58	592.72
MARUTI	7559.40	7568.80	7635.60	7711.80	7492.60	7425.80
NESTLE IND	14947.00	14959.25	15134.65	15322.30	14771.60	14596.20
NTPC	122.40	122.47	124.13	125.87	120.73	119.07
ONGC	141.70	141.18	142.72	143.73	140.17	138.63
POWERGRID	198.35	199.03	200.22	202.08	197.17	195.98
RELIANCE	1464.35	1471.90	1482.10	1499.85	1454.15	1443.95
SBIN	312.40	307.65	322.55	332.70	297.50	282.60
SUN PHARMA	433.40	434.25	439.70	446.00	427.95	422.50
TATAMOTORS	177.70	175.43	181.92	186.13	171.22	164.73
TATA STEEL	380.55	382.28	388.37	396.18	374.47	368.38
TCS	2269.65	2263.87	2290.73	2311.82	2242.78	2215.92
TECHM	739.00	744.98	753.37	767.73	730.62	722.23
TITAN	1331.20	1328.95	1338.25	1345.30	1321.90	1312.60
ULTRACEMCO	4143.20	4133.53	4175.67	4208.13	4101.07	4058.93
UPL	596.45	591.18	604.27	612.08	583.37	570.28
VEDL	148.35	148.87	150.68	153.02	146.53	144.72
WIPRO	259.30	257.70	261.60	263.90	255.40	251.50
YES BANK	70.40	68.00	81.10	91.80	57.30	44.20
ZEEL	260.60	253.10	271.55	282.50	242.15	223.70

(Source – IRIS)

Guru Call: From the expert's desk

Company	Reco Date	Reco Price (Buy on dips)	High till date	Return%
Asian Paints Ltd.	30-Mar-17	1068.10	1820.00	70.40%
Avenue Supermarts Ltd.	31-Jul-17	898.55	1945.00	116.46%
Axis Bank Ltd.	10-Apr-18	519.30	827.75	59.40%
Bajaj Finance Ltd.	11-Oct-18	2271.00	4070.00	79.22%
Bajaj Finserv Ltd	1-Nov-16	3416.80	8668.00	153.69%
Bajaj Holdings And Investment Ltd	19-May-16	1499.10	3800.00	153.49%
Bandhan Bank Ltd.	19-Dec-18	556.40	636.30	14.36%
Bharat Petroleum Corporation Ltd.	23-Oct-16	531.50	536.80	0.99%
Century Textile and Industries Ltd	25-Nov-16	739.30	1471.00	98.97%
Cipla Ltd	20-Mar-17	597.30	678.50	13.59%
Colgate Palmolive	16-Sep-19	1314.00	1589.00	20.93%
Dabur India	22-Oct-19	466.00	480.00	3.00%
DLF Ltd	10-Apr-19	194.30	209.65	7.90%
Emami Limited	26-Jun-19	290.35	343.00	18.13%
Godrej Industries Ltd.	12-Feb-18	550.70	657.60	19.41%
Godrej Properties Ltd.	19-Dec-18	685.30	1119.60	63.37%
Grasim Industries Ltd.	31-May-17	1132.50	1331.00	17.53%
Havells India Ltd.	8-Dec-17	525.75	806.85	53.47%
Housing Development Finance Corp Ltd	19-Dec-17	1720.00	2357.85	37.08%
HDFC Asset Management Company Ltd.	19-Dec-18	1572.90	2975.00	89.14%
HDFC Bank Limited	10-Nov-16	639.00	1282.00	100.63%
HDFC Life Insurance Co Ltd	19-Jan-18	485.05	609.00	25.55%
Hindustan Unilever Ltd.	13-Nov-17	1290.70	2100.00	62.70%
ICICI Bank Ltd.	6-Apr-18	278.65	458.00	64.36%
ICICI Prudential Life Insurance Company Ltd.	28-Jun-18	375.80	474.00	26.13%
ICICI Lombard General Insurance	19-Sep-19	1154.85	1284.00	11.18%
Infosys Ltd.	17-Aug-17	487.60	847.00	73.71%
Kotak Mahindra Bank Ltd	10-Nov-16	822.10	1683.00	104.72%
Mahindra & Mahindra Ltd.	5-Jun-17	709.25	993.00	40.01%
Manappuram Finance Ltd.	24-Apr-18	119.20	145.00	21.64%
Marico Ltd.	4-Apr-18	325.00	404.00	24.31%
Nestle India Ltd.	27-Sep-18	9729.40	14144.00	45.37%
Oberoi Realty Ltd.	23-Nov-17	508.60	641.70	26.17%
Phoenix Mills Limited	7-Jul-19	655.15	767.00	17.07%
Pidilite Industries Limited	4-Oct-16	681.60	1493.00	119.04%
Prestige Estates Projects Limited	6-Jun-19	286.70	317.00	10.57%
Rites Ltd.	19-Dec-18	226.96	281.00	23.81%
State Bank Of India	28-Aug-18	308.00	373.80	21.36%
Tata Global Beverages Ltd.	29-Jun-17	149.15	328.80	120.45%
Tata Consultancy Services Ltd.	8-Jan-18	1344.60	2296.00	70.76%
Trent Ltd.	19-Dec-18	348.40	529.00	51.84%
Ultratech Cement Ltd.	19-Dec-18	4084.60	4904.00	20.06%
Voltas Ltd.	27-Mar-18	613.90	705.00	14.84%
Whirlpool Of India Ltd.	7-Dec-16	872.25	1981.00	127.11%

Securities in Ban For Trade Date 01-11-2019

NIL.

NIFTY 50 STOCKS BELOW 200SMA

SCRIP NAME	SMA 200	CLOSING (31-10-2019)
INFY	748.91	685.60
WIPRO	267.39	259.30
ZEEL	368.39	260.60
ITC	274.74	257.65
TATASTEEL	454.27	380.55
GRASIM	805.24	768.75
CIPLA	517.78	466.85
M&M	623.99	606.45
HINDALCO	196.86	187.90
ONGC	148.41	141.70
VEDL	164.18	148.35
GAIL	153.92	137.35
INDUSINDBK	1489.45	1313.20
ULTRACEMCO	4166.30	4143.20
JSWSTEEL	261.72	228.00
NTPC	125.64	122.40
YESBANK	143.59	70.40
COALINDIA	225.19	207.55
INFRATEL	275.09	189.70

Bulk Deals (BSE)

N/A

Bulk Deals (NSE)

Deal Date	Scrip Name	Client Name	Deal Type	Quantity	Price
31-Oct-19	Yes Bank Limited	GOVERNMENT PENSION FUND GLOBAL	BUY	13500000	73.42
31-Oct-19	Indiabulls Hsg Fin Ltd	SAUDI ARABIAN MONETARY AGENCY	SELL	3345501	211.81

 Note- Executed on 31th Oct 2019. Bulk Deal Buy/Sell done by fund house is considered.

Weekly Expiry Most Active Nifty Call Option

Symbol	Expiry Date	Strike Price	Highest Open Interest (OI)
NIFTY	07-Nov-19	12000	1415550
NIFTY	07-Nov-19	11900	1400175
NIFTY	07-Nov-19	12100	828600

Weekly Expiry Most Active Nifty Put Option

Symbol	Expiry Date	Strike Price	Highest Open Interest (OI)
NIFTY	07-Nov-19	11800	1344375
NIFTY	07-Nov-19	11700	1088550
NIFTY	07-Nov-19	11900	863100

Research Analyst Registration No.	Contact	Website	mail Id
INH000002764	SMS: 'Arihant' to 56677	www.arihantcapital.com	arihant.research@arihantcapital.com

**Arihant is Forbes Asia's '200 Best under a \$Billion' Company
'Best Emerging Commodities Broker' awarded by UTV Bloomberg**

Disclaimer: This document has been prepared by Arihant Capital Markets Limited (hereinafter called as Arihant) and its subsidiaries and associated companies. This document does not constitute an offer or solicitation for the purchase and sale of any financial instrument by Arihant. Receipt and review of this document constitutes your agreement not to circulate, redistribute, retransmit or disclose to others the contents, opinions, conclusion, or information contained herein. This document has been prepared and issued on the basis of publicly available information, internally developed data and other sources believed to be reliable. Whilst meticulous care has been taken to ensure that the facts stated are accurate and opinions given are fair and reasonable, neither the analyst nor any employee of our company is in any way is responsible for its contents and nor is its accuracy or completeness guaranteed. This document is prepared for assistance only and is not intended to be and must not alone be taken as the basis for an investment decision. All recipients of this material should before dealing and or transacting in any of the products referred to in this material make their own investigation, seek appropriate professional advice. The investments discussed in this material may not be suitable for all investors. The recipient alone shall be fully responsible/are liable for any decision taken on the basis of this material. Arihant Capital Markets Ltd (including its affiliates) or its officers, directors, personnel and employees, including persons involved in the preparation or issuance of this material may; (a) from time to time, have positions in, and buy or sell or (b) be engaged in any other transaction and earn brokerage or other compensation in the financial instruments/products discussed herein or act as advisor or lender/borrower in respect of such securities/financial instruments/products or have other potential conflict of interest with respect to any recommendation and related information and opinions. The said persons may have acted upon and/or in a manner contradictory with the information contained here and may have a position or be otherwise interested in the investment referred to in this document before its publication. The user of this report assumes the entire risk of any use made of this data/report. Arihant especially states that it has no financial liability, whatsoever, to the users of this report.

Arihant Capital Markets Ltd

#1011 Solitaire Corporate Park Building No.10 1st Floor
 Andheri Ghatkopar Link Road Chakala Andheri (E) Mumbai-400093
 T. 022-42254800. Fax: 022-42254880
www.arihantcapital.com