

To join our research group on TELEGRAM, please click on the links - <https://bit.ly/34zPV5q> and <https://bit.ly/3mvi2bY>

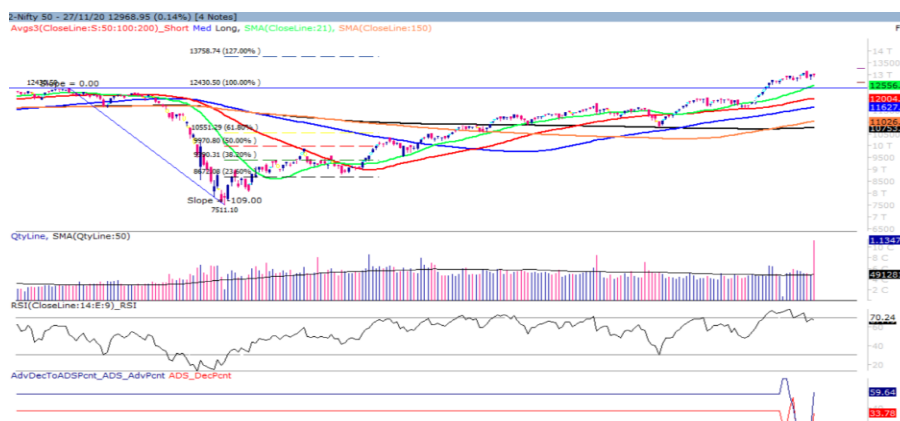
Tuesday, 01st Dec, 2020

Indian Indices	Last Price	(%) Chg
NSE	12968.95	0.14
BSE	44149.72	-0.25
World Indices	Last Price	(%) Chg
Dow Jones	29638.64	-0.91
Nasdaq	12198.74	-0.06
Nikkei	26824.46	1.48
Hang Seng	26491.96	0.56
FTSE	6266.19	-1.59
Commodity	Last Price	(%) Chg
GOLD(\$/ounce)	1778.00	0.13
Silver (\$/Ounce)	22.74	0.94
Crude (\$/BBL)	47.60	-0.58
Aluminium spot (\$/mt)	2045.75	0.32
Copper SPOT (\$/mt)	7637.75	0.94
Lead Spot (\$/MT)	2073.75	0.53
Natural gas \$/MMBtu	2.96	2.64
Currency	Last Price	(%) Chg
USD-INR	74.22	0.19
EUR-INR	88.49	0.33
Bond	Last Price	(%) Chg
India 10 Yr Bond yield	5.91	0.66

52 Wk High (A group)			52 Wk Low (A group)		
Company	Close Price	52 Wk High	Company	Close Price	52 Wk Low
ADNIPORT	412	416	--	--	--
AMARAJA	946	963	--	--	--
APOLOTYR	184	185	--	--	--
BAJAJFIN	4903	4957	--	--	--
CADILAH	450	458	--	--	--

Source: BSE

Market Technical Outlook



Nifty opened higher but was unable to sustain the opening gains which led Nifty to close marginally in red. On the daily chart, we are observing time wise consolidation at current level. In coming trading session if Nifty trades above 13040 then it may test 13150 – 13200 levels. On the downside, 12800 – 12700 may act as support for the day.

We still maintain our stance that the trend remains up but a consolidation or minor correction from current level cannot be ruled out. Hence, one should adopt buy on decline strategy.

Foreign Institutional Investments (FII's) Activities

Name of Segment	Net Buyer/seller	Rs In Cr
Index Futures	Net Buy	1770.48
Stock Futures	Net Sell	-3735.09
Net Future Position	Net Sell	-1964.61
Index Options	Net Buy	852.50
Stock Options	Net Sell	-72.20
Net Options Position	Net Buy	780.30
FII In cash Segment	Net Buy	7712.98
DII In cash Segment	Net Sell	-4968.90
Net Cash Position	Net Buy	2744.08

Guru Call: From the expert's desk

Company	Reco Date	Reco Price (Buy on dips)	High till date	Return%
Aarti drugs	21-Aug-20	783.00	1026.95	31.16%
Aegis Logistics	11-Sep-20	204.05	259.20	27.03%
Ajanta Pharma	04-Aug-20	1661.05	1759.00	5.90%
Alkem	08-Jul-20	2427	2583.00	6.04%
Asian Paints Ltd.	30-Mar-17	1068.10	1916.70	79.45%
Avenue Supermarts Ltd.	31-Jul-17	898.55	2560.00	184.90%
Axis Bank Ltd.	10-Apr-18	519.30	827.75	59.40%
Bajaj Finance Ltd.	11-Oct-18	2271.00	4923.40	116.79%
Bajaj Finserv Ltd	1-Nov-16	3416.80	9950.00	191.21%
Bajaj Holdings And Investment Ltd	19-May-16	1499.10	3950.00	163.49%
Bajaj-Auto	12-Jun-20	2782.00	3159.00	13.55%
Bandhan Bank Ltd.	19-Dec-18	556.40	650.00	16.82%
Biocon	17-Sep-20	440.05	478.00	8.62%
Britannia	12-June-20	3366.00	4010.00	16.05%
Cadila	03-Apr-20	274.00	447.90	63.47%
CAMS	08-Oct-20	1334.90	1371.20	2.72%
CDSL	17-Sep-20	485.90	506.00	4.14%
Century Textile and Industries Ltd	25-Nov-16	326.00	656.90	101.50%
Chola finance	25-Sep-20	238.70	265.00	11.02%
Chola Holding	23-Sep-20	391.80	424.00	8.22%
Cipla Ltd	20-Mar-17	597.30	825.00	38.12%
Colgate Palmolive	16-Sep-19	1314.00	1642.60	25.01%
Crompton Greaves Consumer	11-Jun-20	225.00	300.50	33.56%
CUB	28-Sep-20	135.65	153.00	12.79%
Dabur India	22-Oct-19	466.00	535.00	14.81%
Divislab	04-Aug-20	2641.00	3389.00	28.32%
DLF Ltd	10-Apr-19	194.30	266.55	37.18%
Dr Reddy	04-Aug-20	4530.00	5512.65	21.69%
Emami Limited	26-Jun-19	290.35	407.55	40.37%
Fine Organic	17-Sep-20	3145.00	3260.00	3.65%
Fortis	14-Jul-20	127.00	142.70	12.36%
Galaxy Surface	01-Jul-20	1557.00	2039.85	31.01%
Goderj CP	16-Jun-20	634.00	762.00	20.19%
Godrej Industries Ltd.	12-Feb-18	550.70	657.60	19.41%
Hatsun AgroProd.	17-Sep-20	841.45	878.00	4.34%
HDFC Asset Management Company Ltd.	19-Dec-18	1572.90	3844.00	144.39%
HDFC Bank Limited	10-Nov-16	639.00	1305.50	104.30%
HDFC Life Insurance Co Ltd	19-Jan-18	485.05	647.60	33.51%
Hero Motocorp Ltd	29-Sep-20	3174.95	3355.50	5.69%
Hindustan Unilever Ltd.	13-Nov-17	1290.70	2614.30	102.55%
Housing Development Finance Corp Ltd	19-Dec-17	1720.00	2499.90	45.34%
ICICI Bank Ltd.	06-Apr-18	278.65	552.20	98.17%
ICICI Lombard General Insurance	19-Sep-19	1154.90	1440.40	24.72%
ICICI Prudential Life Insurance Company Ltd.	28-Jun-18	375.80	537.30	42.97%
ICICI Securities Ltd	24-Sep-20	466.65	484.40	3.80%
Indusindbnk	08-Jun-20	451.00	712.00	57.87%
Infosys Ltd.	17-Aug-17	487.60	1146.55	135.14%
Ipca Lab	11-Aug-20	2099.00	2267.95	8.05%
JK Cement	19-Jun-20	1378.00	1724.80	25.17%
JK Lakshmi Cement	03-Jul-20	276.00	306.95	11.21%
Jyoti lab	05-Aug-20	132.90	158.50	19.26%
Justdial	07-Oct-20	385.60	448.00	16.18%

Guru Call: From the expert's desk

Company	Reco Date	Reco Price (Buy on dips)	High till date	Return%
Kansai Nerolac Paints	16-Dec-19	529.85	551.00	3.99%
Kotak Mahindra Bank Ltd	10-Nov-16	822.10	1740.00	111.65%
Mahanagar Gas	15-Nov-19	1029.00	1246.20	21.11%
Mahindra & Mahindra Ltd.	05-Jun-17	709.25	993.00	40.01%
Manappuram Finance Ltd.	24-Apr-18	119.20	194.80	63.42%
Marico Ltd.	04-Apr-18	325.00	404.00	24.31%
Nam-India	25-Nov-18	377.00	452.90	20.13%
Nestle India Ltd.	27-Sep-18	9729.40	18369.95	88.81%
Oberoi Realty Ltd.	23-Nov-17	508.60	641.70	26.17%
PEL	02-Sep-20	1246.25	1360.45	9.16%
Pfizer	22-Jul-20	4150.00	5239.00	26.24%
Phoenix Mills Limited	07-Jul-19	655.15	979.00	49.43%
PI Industries	17-Sep-20	2012.10	2070	2.87%
Pidilite Industries Limited	04-Oct-16	681.60	1661.00	143.69%
Raymond	25-Sep-20	263.55	293.00	11.17%
RBL Bank	25-Sep-20	164.95	185.00	12.16%
Reliance	22-Apr-20	1351.00	2369.35	75.38%
Rites Ltd.	19-Dec-18	226.96	331.00	45.84%
SBI Card	16-Jul-20	719.00	868.00	20.72%
SBI Life	20-May-20	715.00	895.00	20.11%
Solara	25-Sep-20	954.90	1255.00	31.43%
Sun Pharma	07-Aug-20	525.00	564.75	7.57%
Syngene	24-Sep-20	565.70	588.00	3.94%
Tata Chemicals Limited	24-Dec-19	296.89	345.90	16.51%
Tata Consultancy Services Ltd.	08-Jan-18	1344.60	2885.00	114.56%
Tata Consumer	29-Jun-17	149.15	591.95	296.88%
Torent Pharma	04-Aug-20	2727.95	2934.00	7.55%
Trent Ltd.	19-Dec-18	348.40	804.07	130.97%
Ultratech Cement Ltd.	19-Dec-18	4084.60	4904.95	20.08%
Voltas Ltd.	27-Mar-18	613.90	741.00	20.70%
Whirlpool Of India Ltd.	07-Dec-16	872.25	2555.00	192.92%
Zee Entertainment	22-Nov-19	345.00	362.00	4.93%

PCG PORTFOLIO

Company	Reco Date	Reco Price (Buy on dips)	High till date	Return%
Ajanta Pharma Ltd.	16-Sep-20	1526.10	1655.80	8.50%
Alkem Laboratories Ltd.	16-Sep-20	2823.80	2987.90	5.81%
Biocon Ltd.	16-Sep-20	438.65	478.00	8.97%
Cipla Ltd.	16-Sep-20	752.60	829.00	10.15%
Fine Organic Industries Ltd.	16-Sep-20	3070.95	3095.95	0.81%
Hatsun Agro Products Ltd.	16-Sep-20	840.15	868.00	3.31%
P I Industries Ltd.	16-Sep-20	2052.80	2080.00	1.33%
Reliance Industries Ltd.	16-Sep-20	2324.55	2336.00	0.49%
Infosys Ltd.	18-Sep-20	1002.15	1154.30	15.18%
Central Depository Services (India) Ltd	23-Sep-20	479.60	506.00	5.50%
Larsen & Toubro Infotech Ltd	23-Sep-20	2448.45	3512.70	43.47%
Divi's Laboratories Ltd	28-Sep-20	3097.15	3269.90	5.58%
Poly Medicare Ltd	28-Sep-20	458.10	508.80	11.07%
Coromandel International Ltd	29-Sep-20	793.25	801.90	1.09%
Coforge Ltd	01-Oct-20	2335.80	2760.00	18.16%
Tata Consultancy Services Ltd	05-Oct-20	2705.80	2885.00	6.62%
--	--	--	--	--
--	--	--	--	--
--	--	--	--	--
--	--	--	--	--

Weekly Expiry Most Active Nifty Call Option

Symbol	Expiry Date	Strike Price	Highest Open Interest (OI)
NIFTY	03-Dec-2020	13000	3,228,750
NIFTY	03-Dec-2020	13500	3,112,725
NIFTY	03-Dec-2020	14000	2,606,475

Weekly Expiry Most Active Nifty Put Option

Symbol	Expiry Date	Strike Price	Highest Open Interest (OI)
NIFTY	03-Dec-2020	12900	2,530,275
NIFTY	03-Dec-2020	12800	2,404,650
NIFTY	03-Dec-2020	13000	2,057,925

NIFTY 50 STOCKS BELOW 200SMA

SCRIP NAME	SMA 200	CLOSING (27-11-2020)
HINDUNILVR	2155.16	2138.2
BPCL	379.96	373
IOC	86.24	84.6
UPL	444.48	417.7
BHARTIARTL	510.13	463.25
COALINDIA	135.68	125.55
--	--	--
--	--	--
--	--	--
--	--	--
--	--	--
--	--	--
--	--	--
--	--	--
--	--	--
--	--	--
--	--	--
--	--	--

Securities in Ban For Trade Date 01-12-2020

NIL

Bulk Deals (BSE)

Deal Date	Scrip Name	Client Name	Deal Type	Quantity	Price
27-Nov-20	V2RETAIL	BENNETT COLEMAN & CO LTD	S	450000	84.30

Bulk Deals (NSE)

Deal Date	Scrip Name	Client Name	Deal Type	Quantity	Price
27-Nov-20	ACC	BNP PARIBAS ARBITRAGE	BUY	231	1,711.17
27-Nov-20	AMBER	ISHARES CORE EMERGING MARKETS MAURITIUS CO	BUY	205987	2,356.50
27-Nov-20	APOLLOHOSP	BNP PARIBAS ARBITRAGE	BUY	310	2,349.21
27-Nov-20	BOSCHLTD	INTEGRATED CORE STRATEGIES (ASIA) PTE. LTD.	BUY	210224	12,845.81
27-Nov-20	BOSCHLTD	BLACKROCK EMERGING MARKETS FUND INC	BUY	1956	12,828.29

27-Nov-20	CYIENT	BLACKROCK EMERGING MARKETS FUND INC	BUY	752837	486.76
27-Nov-20	IPCALAB	GOLDMAN SACHS INVESTMENTS MAURITIUS I LTD	BUY	69473	2,173.10
27-Nov-20	IPCALAB	BNP PARIBAS ARBITRAGE	BUY	194	2,162.44
27-Nov-20	LICHSGFIN	INTEGRATED CORE STRATEGIES (ASIA) PTE. LTD.	BUY	5878590	330.17
27-Nov-20	MRF	SOCIETE GENERALE	BUY	200	76,822.09
27-Nov-20	MRF	BNP PARIBAS ARBITRAGE	BUY	6	77,445.75
27-Nov-20	PIIND	BNP PARIBAS ARBITRAGE	BUY	249	2,309.46
27-Nov-20	TRENT	BNP PARIBAS ARBITRAGE	BUY	693	722.60
27-Nov-20	ACC	INTEGRATED CORE STRATEGIES (ASIA) PTE. LTD.	SELL	1902067	1,703.45
27-Nov-20	ACC	BNP PARIBAS ARBITRAGE	SELL	942520	1700.58
27-Nov-20	ADANIGREEN	INTEGRATED CORE STRATEGIES (ASIA) PTE. LTD.	SELL	9406683	1131.24
27-Nov-20	APOLLOHOSP	BNP PARIBAS ARBITRAGE	SELL	807914	2343.42
27-Nov-20	APOLLOHOSP	INTEGRATED CORE STRATEGIES (ASIA) PTE. LTD.	SELL	1883658	2344.89
27-Nov-20	BALKRISIND	INTEGRATED CORE STRATEGIES (ASIA) PTE. LTD.	SELL	1798486	1656.94
27-Nov-20	BOSCHLTD	BLACKROCK EMERGING MARKETS FUND INC	SELL	153401	12806.7
27-Nov-20	BRITANNIA	INTEGRATED CORE STRATEGIES (ASIA) PTE. LTD.	SELL	1234092	3633.48
27-Nov-20	CDSL	INVESCO TRUSTEE PVT LTD A/C INVESCO INDIA CONTRA FUND	SELL	581700	481.48
27-Nov-20	COLPAL	INTEGRATED CORE STRATEGIES (ASIA) PTE. LTD.	SELL	1723554	1514.78
27-Nov-20	GREAVESCOT	SMALLCAP WORLD FUND INC	SELL	2587277	81.41
27-Nov-20	IPCALAB	GOLDMAN SACHS INVESTMENTS MAURITIUS I LTD	SELL	675065	2173.45
27-Nov-20	IPCALAB	INTEGRATED CORE STRATEGIES (ASIA) PTE. LTD.	SELL	2015056	2,158.70
27-Nov-20	IPCALAB	BNP PARIBAS ARBITRAGE	SELL	1311732	2,154.27
27-Nov-20	KOTAKBANK	INTEGRATED CORE STRATEGIES (ASIA) PTE. LTD.	SELL	14211157	1,902.70
27-Nov-20	LICHSGFIN	BLACKROCK EMERGING MARKETS FUND INC	SELL	4779102	329.18
27-Nov-20	LTI	INTEGRATED CORE STRATEGIES (ASIA) PTE. LTD.	SELL	1336965	3,190.01
27-Nov-20	MRF	BNP PARIBAS ARBITRAGE	SELL	27313	77,396.50
27-Nov-20	MRF	SOCIETE GENERALE	SELL	31280	77,441.89
27-Nov-20	MRF	INTEGRATED CORE STRATEGIES (ASIA) PTE. LTD.	SELL	62064	77,510.36
27-Nov-20	MUTHOOTFIN	INTEGRATED CORE STRATEGIES (ASIA) PTE. LTD.	SELL	2959809	1,149.95
27-Nov-20	PIIND	BNP PARIBAS ARBITRAGE	SELL	1076528	2,217.38
27-Nov-20	PIIND	INTEGRATED CORE STRATEGIES (ASIA) PTE. LTD.	SELL	1816627	2,196.51
27-Nov-20	SNOWMAN	ADANI LOGISTICS LIMITED	SELL	1125288	59.11
27-Nov-20	SRTRANSFIN	INTEGRATED CORE STRATEGIES (ASIA) PTE. LTD.	SELL	2617105	1,067.67
27-Nov-20	TAKE	SVL LIMITED	SELL	800000	41.18
27-Nov-20	TATASTEEL	INTEGRATED CORE STRATEGIES (ASIA) PTE. LTD.	SELL	7788674	576.67
27-Nov-20	TRENT	INTEGRATED CORE STRATEGIES (ASIA) PTE. LTD.	SELL	4457349	717.28
27-Nov-20	TRENT	BNP PARIBAS ARBITRAGE	SELL	1836752	714.31
27-Nov-20	TRENT	DERIVE TRADING & RESORTS PVT LTD	SELL	2807516	719.06
27-Nov-20	YESBANK	INTEGRATED CORE STRATEGIES (ASIA) PTE. LTD.	SELL	275942382	14.64

Note- Executed on 27th Nov 2020. Bulk Deal Buy/Sell done by fund house is considered

Research Analyst Registration No.	Contact	Website	mail Id
INH000002764	SMS: 'Arihant' to 56677	www.arihantcapital.com	arihant.research@arihantcapital.com

**Arihant is Forbes Asia’s ‘200 Best under a \$Billion’ Company
‘Best Emerging Commodities Broker’ awarded by UTV Bloomberg**

Disclaimer: This document has been prepared by Arihant Capital Markets Limited (hereinafter called as Arihant) and its subsidiaries and associated companies. This document does not constitute an offer or solicitation for the purchase and sale of any financial instrument by Arihant. Receipt and review of this document constitutes your agreement not to circulate, redistribute, retransmit or disclose to others the contents, opinions, conclusion, or information contained herein. This document has been prepared and issued on the basis of publicly available information, internally developed data and other sources believed to be reliable. Whilst meticulous care has been taken to ensure that the facts stated are accurate and opinions given are fair and reasonable, neither the analyst nor any employee of our company is in any way is responsible for its contents and nor is its accuracy or completeness guaranteed. This document is prepared for assistance only and is not intended to be and must not alone be taken as the basis for an investment decision. All recipients of this material should before dealing and or transacting in any of the products referred to in this material make their own investigation, seek appropriate professional advice. The investments discussed in this material may not be suitable for all investors. The recipient alone shall be fully responsible/are liable for any decision taken on the basis of this material. Arihant Capital Markets Ltd (including its affiliates) or its officers, directors, personnel and employees, including persons involved in the preparation or issuance of this material may; (a) from time to time, have positions in, and buy or sell or (b) be engaged in any other transaction and earn brokerage or other compensation in the financial instruments/products discussed herein or act as advisor or lender/borrower in respect of such securities/financial instruments/products or have other potential conflict of interest with respect to any recommendation and related information and opinions. The said persons may have acted upon and/or in a manner contradictory with the information contained here and may have a position or be otherwise interested in the investment referred to in this document before its publication. The user of this report assumes the entire risk of any use made of this data/report. Arihant especially states that it has no financial liability, whatsoever, to the users of this report.

Arihant Capital Markets Ltd

#1011 Solitaire Corporate Park Building No.10 1st Floor
 Andheri Ghatkopar Link Road Chakala Andheri (E) Mumbai-400093
 T. 022-42254800. Fax: 022-42254880
www.arihantcapital.com