

To join our research group on TELEGRAM, please click on the links - <https://bit.ly/3JTeFcc> and <https://bit.ly/3TNulgc>

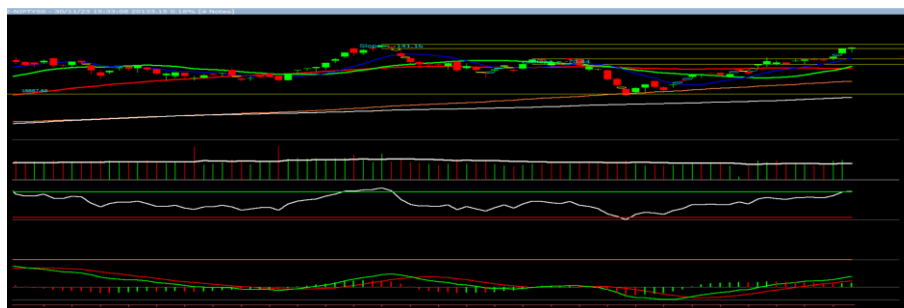
 Friday, 01st Dec 2023

Indian Indices	Last Price	(%) Chg
NSE	20133.15	0.18
BSE	66988.44	0.13
World Indices	Last Price	(%) Chg
Dow Jones	35950.89	1.47
Nasdaq	14226.22	-0.23
Nikkei	33446.90	-0.12
Hang Seng	16956.95	-0.50
FTSE	7453.75	0.41
Commodity	Last Price	(%) Chg
GOLD(\$/ounce)	2043.10	0.25
Silver (\$/Ounce)	25.41	1.46
Crude (\$/BBL)	80.57	-0.36
Aluminium spot (\$/mt)	2208.00	0.36
Copper SPOT (\$/mt)	8505.00	0.37
Zinc (\$/MT)	2486.50	0.59
Natural gas \$/MMBtu	2.81	0.39
Currency	Last Price	(%) Chg
USDINR	83.32	-0.12
EURINR	90.91	0.15
Bond		
India 10 Yr Bond yield	7.27	0.37

52 Wk High (A group)			52 Wk Low (A group)		
Company	Close Price	52 Wk High	Company	Close Price	52 Wk Low
AJANTAPHA	1990	1994	--	--	--
ALKEM	4685	4688	--	--	--
AMARAJA	708	710	--	--	--
AXISBANK	1059	1080	--	--	--
BAJA-AUT	6108	6111	--	--	--

Source: BSE

Market Technical Outlook



Nifty opened on a subdued note traded with choppiness and witness upside momentum in the final hour of the trading session to close in green. On the daily chart, prices are facing resistance near prior all-time high of 20222 and formed a “Doji” candle. This suggests that market is cautious at current level. In coming trading session if nifty trades above 20160 level then it may test 20222 - 20310 levels. On the downside, 20010–19900 levels may act as support for the prices.

Broadly, looking at the current price action it is evident that nifty may test prior all-time high of 20222 in couple of weeks. Hence, one should adopt positive approach at current level as stock specific activity is likely to continue.

Foreign Institutional Investments (FII's) Activities

Name of Segment	Net Buyer/seller	Rs In Cr
Index Futures	Net Buy	169.93
Stock Futures	Net Sell	-938.33
Net Future Position	Net Sell	768.40
Index Options	Net Buy	34364.05
Stock Options	Net Sell	-825.43
Net Options Position	Net Buy	33538.62
FII In cash Segment	Net Buy	8147.85
DII In cash Segment	Net Sell	780.32
Net Cash Position	Net Buy	7367.53

Guru Call: From the expert's desk

Company	Reco Date	Reco Price (Buy on dips)	High till date	Return%
Adani Power	20-Apr-22	235	345	46.6%
Adani Wilmar Ltd	20-Apr-22	668	878	31.5%
Aditya Birla Capital Ltd	13-Aug-21	124	139	12.5%
Aditya Birla Fashion and Retail Ltd	8-Feb-21	164	322	95.9%
Apcotex Industries Limited	13-Aug-21	343	679	98.0%
Asian Paints Ltd.	30-Mar-17	1068	3590	236.1%
Avenue Supermarts Ltd.	31-Jul-17	899	5900	556.6%
Axis Bank Ltd.	10-Apr-18	519	867	67.0%
Bajaj Finance Ltd	20-Apr-22	7033	7295	3.7%
Bajaj Finserv Ltd	1-Nov-16	3417	19325	465.6%
Bajaj Holdings And Investment Ltd	19-May-16	1499	6598	340.1%
CDSL	17-Sep-20	486	1734	256.9%
Chola finance	25-Sep-20	239	770	222.6%
Chola Holding	23-Sep-20	392	763	94.7%
Cipla Ltd	20-Mar-17	597	1083	81.3%
Colgate Palmolive	16-Sep-19	1314	1823	38.7%
D. P. Abhushan Ltd	20-Apr-22	396	495	25.0%
Dabur India	22-Oct-19	466	659	41.4%
DLF Ltd	10-Apr-19	194	450	131.6%
Dr Reddy	4-Aug-20	4530	5615	24.0%
Emami Limited	26-Jun-19	290	622	114.2%
Finolex Cables Ltd	8-Feb-21	130	268	106.2%
Fortis	14-Jul-20	127	314	147.2%
Godawari Power	20-Apr-22	455	482	6.0%
Godrej Consumer Products Limited	16-Jun-20	634	1138	79.5%
HDFC Asset Management Company Ltd.	19-Dec-18	1573	3844	144.4%
HDFC Bank Limited	10-Nov-16	639	1725	170.0%
HDFC Life Insurance Co Ltd	19-Jan-18	485	776	60.0%
Heritage Foods Ltd	20-Apr-22	330	354	7.2%
Hero Motocorp Ltd	29-Sep-20	3175	3629	14.3%
Hindustan Unilever Ltd.	13-Nov-17	1291	2859	121.5%
Housing Development Finance Corp Ltd	19-Dec-17	1720	3365	95.6%
ICICI Bank Ltd.	6-Apr-18	279	867	211.1%
ICICI Lombard General Insurance	19-Sep-19	1155	1675	45.0%
ICICI Prudential Life Insurance Company Ltd.	28-Jun-18	376	724	92.7%
ICICI Securities Ltd	24-Sep-20	467	896	92.0%
Indusindbnk	8-Jun-20	451	1242	175.4%
Infosys Ltd.	17-Aug-17	488	1954	300.7%
Kotak Mahindra Bank Ltd	10-Nov-16	822	2253	174.1%
Linde India	20-Apr-22	3499	3649	4.3%
Marico Ltd.	4-Apr-18	325	608	87.1%
Maruti Suzuki India Ltd	13-Aug-20	5989	9050	51.1%
Oberoi Realty Ltd.	23-Nov-17	509	1052	106.8%
PEL	2-Sep-20	1246	3015	141.9%
Phoenix Mills Limited	7-Jul-19	655	1200	83.2%
Poonawalla Fincorp Ltd	13-Aug-21	175	344	96.1%
Procter & Gamble Hygiene & Health Care	13-Aug-21	12870	16466	27.9%
Raymond	25-Sep-20	264	1280	385.7%
Reliance	22-Apr-20	1351	2856	111.4%
SBI Life	20-May-20	715	1293	80.8%
Shree Renuka Sugars Limited	13-Aug-21	27	63	135.1%
Spectrum Electrical	18-Apr-22	98	103	5.0%

Guru Call: From the expert's desk

Company	Reco Date	Reco Price (Buy on dips)	High till date	Return%
State Bank of India	3-Feb-21	336	549	63.4%
Sun Pharma	7-Aug-20	525	967	84.2%
Sun TV Network Ltd.	13-Aug-21	525	612	16.5%
Tata Chemicals Limited	24-Dec-19	297	1158	290.0%
Tata Consultancy Services Ltd.	8-Jan-18	1345	4046	200.9%
Tata motors	20-Apr-22	441	450	2.0%
Tata motors dvr	20-Apr-22	220	226	2.6%
Tata Power	20-Apr-22	249	260	4.4%
Trent Ltd.	19-Dec-18	348	1347	286.6%
Ultratech Cement Ltd.	19-Dec-18	4085	8269	102.4%
UTI Asset Management Company Ltd	13-Aug-21	1044	1217	16.6%
Vedanta Ltd	28-Jun-21	261	441	69.1%
Voltas Ltd.	27-Mar-18	614	1357	121.0%
Whirlpool Of India Ltd.	7-Dec-16	872	2550	192.3%
Wipro Limited	13-Aug-21	616	740	20.2%

NIFTY 50 STOCKS BELOW 200SMA

[illegible]

Weekly Expiry Most Active Nifty Call Option

Symbol	Expiry Date	Strike Price	Highest Open Interest (Contracts)
NIFTY	07-Dec-2023	20,400	74,755
NIFTY	07-Dec-2023	20,300	65,870
NIFTY	07-Dec-2023	20,200	60,120

Weekly Expiry Most Active Nifty Put Option

Symbol	Expiry Date	Strike Price	Highest Open Interest (Contracts)
NIFTY	07-Dec-2023	20,000	1,22,709
NIFTY	07-Dec-2023	19,900	81,194
NIFTY	07-Dec-2023	19,800	67,604

Securities in Ban For Trade Date: 01-12-2023

N.A

Bulk Deals (BSE)

Deal Date	Scrip Name	Client Name	Deal Type	Quantity	Price
30-Nov-23	TIMKEN	PROFUSION INVESTMENT ADVISORS LLP	S	1940623	2,890.41

Bulk Deals (NSE)

Deal Date	Scrip Name	Client Name	Deal Type	Quantity	Price
30-Nov-23	APLAPOLLO	COPTHALL MAURITIUS INVESTMENT LIMITED	BUY	250000	1,686.27
30-Nov-23	APLAPOLLO	BNP PARIBAS ARBITRAGE	BUY	1583	1,688.12
30-Nov-23	ARVIND	BNP PARIBAS ARBITRAGE	BUY	138	216.54
30-Nov-23	ELECTCAST	BNP PARIBAS ARBITRAGE	BUY	28	115.56
30-Nov-23	FEDFINA	BLEND FUND 2	BUY	3006541	143.86
30-Nov-23	GANDHAR	PULIN INVESTMENTS PRIVATE LIMITED	BUY	683460	318.39
30-Nov-23	INDUSINDBK	BNP PARIBAS ARBITRAGE	BUY	62341	1,466.67
30-Nov-23	LODHA	BNP PARIBAS ARBITRAGE	BUY	5502	869.39
30-Nov-23	ORIENTCEM	BNP PARIBAS ARBITRAGE	BUY	223	256.62
30-Nov-23	PAYTM	BNP PARIBAS ARBITRAGE	BUY	25387	878.83
30-Nov-23	PERSISTENT	GOVERNMENT OF SINGAPORE	BUY	388464	6,408.05
30-Nov-23	PERSISTENT	LIESHA CORPORATION PRIVATE LIMITED .	BUY	583339	6,414.02
30-Nov-23	PERSISTENT	BNP PARIBAS ARBITRAGE	BUY	2062	6451
30-Nov-23	POLYCAB	BLACKROCK GLOBAL FUNDS-INDIA FUND	BUY	1749372	5266.22
30-Nov-23	POLYCAB	BNP PARIBAS ARBITRAGE	BUY	4522	5212.09
30-Nov-23	SUZLON	BNP PARIBAS ARBITRAGE	BUY	1282273	40.02
30-Nov-23	SUZLON	COPTHALL MAURITIUS INVESTMENT LIMITED	BUY	1588700	40.12
30-Nov-23	TATACOMM	BNP PARIBAS ARBITRAGE	BUY	1040	1711.49
30-Nov-23	TATACOMM	BLACKROCK GLOBAL FUNDS-INDIA FUND	BUY	4462433	1707.69

30-Nov-23	TATAMTRDVR	ISHARES MSCI INDIA ETF	BUY	2636451	479.34
30-Nov-23	TATAMTRDVR	ISHARES CORE MSCI EMERGING MARKETS ETF	BUY	4141898	479.34
30-Nov-23	TATAMTRDVR	STATE STREET GLOBAL ADVISORS LUX SICAV	BUY	3163822	477.97
30-Nov-23	APLAPOLLO	COPTHALL MAURITIUS INVESTMENT LIMITED	SELL	1576494	1686.32
30-Nov-23	APLAPOLLO	BNP PARIBAS ARBITRAGE	SELL	6633888	1,682.89
30-Nov-23	ARVIND	BNP PARIBAS ARBITRAGE	SELL	1612497	225.96
30-Nov-23	ASTRAMICRO	BNP PARIBAS ARBITRAGE	SELL	500143	576.98
30-Nov-23	ELECTCAST	BNP PARIBAS ARBITRAGE	SELL	4097590	117.69
30-Nov-23	GABRIEL	BNP PARIBAS ARBITRAGE	SELL	737578	421.61
30-Nov-23	GATEWAY	BNP PARIBAS ARBITRAGE	SELL	4249524	102.91
30-Nov-23	GOKEX	BNP PARIBAS ARBITRAGE	SELL	570037	977.44
30-Nov-23	HCC	BNP PARIBAS ARBITRAGE	SELL	7796131	29.90
30-Nov-23	INDUSINDBK	BNP PARIBAS ARBITRAGE	SELL	11661300	1,464.66
30-Nov-23	INDUSINDBK	ROUTE ONE FUND I LP	SELL	4555000	1,463.89
30-Nov-23	PAYTM	COPTHALL MAURITIUS INVESTMENT LIMITED	SELL	4650637	875.70
30-Nov-23	PAYTM	BNP PARIBAS ARBITRAGE	SELL	8615525	875.16
30-Nov-23	PERSISTENT	BNP PARIBAS ARBITRAGE	SELL	1838946	6,386.28
30-Nov-23	PERSISTENT	COPTHALL MAURITIUS INVESTMENT LIMITED	SELL	477849	6404.84
30-Nov-23	PERSISTENT	LIESHA CORPORATION PRIVATE LIMITED .	SELL	583339	6421.67
30-Nov-23	POLYCAB	BNP PARIBAS ARBITRAGE	SELL	1958251	5263.5
30-Nov-23	PTC	BNP PARIBAS ARBITRAGE	SELL	2558507	163.8
30-Nov-23	SUZLON	COPTHALL MAURITIUS INVESTMENT LIMITED	SELL	70466974	40.83
30-Nov-23	SUZLON	BNP PARIBAS ARBITRAGE	SELL	327004411	40.7
30-Nov-23	TATACOMM	BNP PARIBAS ARBITRAGE	SELL	5988714	1704.1
30-Nov-23	TATAMTRDVR	COPTHALL MAURITIUS INVESTMENT L	SELL	5015389	477.1
30-Nov-23	TATAMTRDVR	UBS PRINCIPAL CAPITAL ASIA LIMITED	SELL	5930392	477.47
30-Nov-23	TATAMTRDVR	BNP PARIBAS ARBITRAGE	SELL	14416510	477.5
30-Nov-23	TI	BNP PARIBAS ARBITRAGE	SELL	1061212	265.34

Note- Executed on 30th Nov 2023. Bulk Deal Buy/Sell done by fund house is considered.

Research Analyst Registration No.

INH000002764

Contact

SMS: 'Arihant' to 56677

Website

www.arihantcapital.com

mail Id

arihant.research@arihantcapital.com

**Arihant is Forbes Asia's '200 Best under a \$Billion' Company
'Best Emerging Commodities Broker' awarded by UTV Bloomberg**

Disclaimer: This document has been prepared by Arihant Capital Markets Limited (hereinafter called as Arihant) and its subsidiaries and associated companies. This document does not constitute an offer or solicitation for the purchase and sale of any financial instrument by Arihant. Receipt and review of this document constitutes your agreement not to circulate, redistribute, retransmit or disclose to others the contents, opinions, conclusion, or information contained herein. This document has been prepared and issued on the basis of publicly available information, internally developed data and other sources believed to be reliable. Whilst meticulous care has been taken to ensure that the facts stated are accurate and opinions given are fair and reasonable, neither the analyst nor any employee of our company is in any way is responsible for its contents and nor is its accuracy or completeness guaranteed. This document is prepared for assistance only and is not intended to be and must not alone be taken as the basis for an investment decision. All recipients of this material should before dealing and or transacting in any of the products referred to in this material make their own investigation, seek appropriate professional advice. The investments discussed in this material may not be suitable for all investors. The recipient alone shall be fully responsible/are liable for any decision taken on the basis of this material. Arihant Capital Markets Ltd (including its affiliates) or its officers, directors, personnel and employees, including persons involved in the preparation or issuance of this material may; (a) from time to time, have positions in, and buy or sell or (b) be engaged in any other transaction and earn brokerage or other compensation in the financial instruments/products discussed herein or act as advisor or lender/borrower in respect of such securities/financial instruments/products or have other potential conflict of interest with respect to any recommendation and related information and opinions. The said persons may have acted upon and/or in a manner contradictory with the information contained here and may have a position or be otherwise interested in the investment referred to in this document before its publication. The user of this report assumes the entire risk of any use made of this data/report. Arihant especially states that it has no financial liability, whatsoever, to the users of this report.

Arihant Capital Markets Ltd

#1011 Solitaire Corporate Park Building No.10 1st Floor
Andheri Ghatkopar Link Road Chakala Andheri (E) Mumbai-400093
T. 022-42254800. Fax: 022-42254880
www.arihantcapital.com