

To join our research group on TELEGRAM, please click on the links - <https://bit.ly/37T17JR> and <https://bit.ly/2svtU7k>

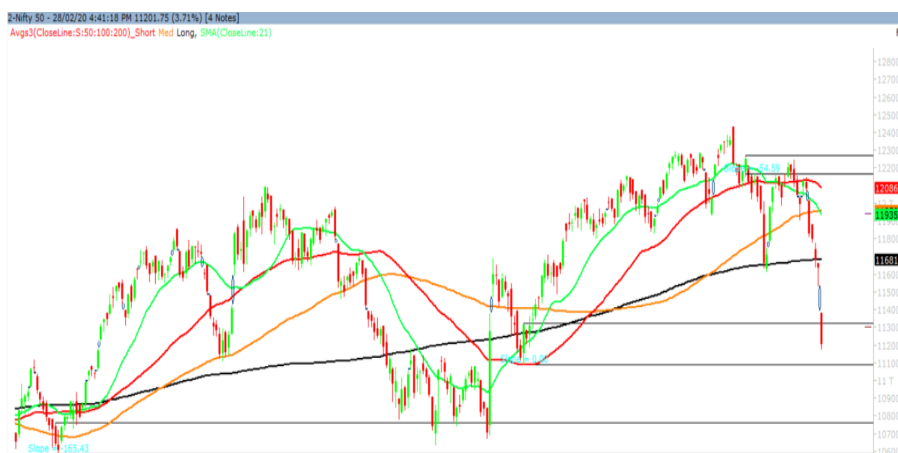
Monday, 02<sup>nd</sup> March, 2020

Indian Indices	Last Price	(%) Chg
BSE	38297.29	-3.64
NSE	11201.75	-3.71
World Indices		
Dow Jones	25409.36	-1.39
Nasdaq	8567.37	0.01
Nikkei	21359.85	1.03
Hang Seng	26300.74	0.65
FTSE	6580.61	-3.18
Commodity	Last Price	(%) Chg
GOLD(\$/ounce)	1597.10	1.94
Silver (\$/Ounce)	16.88	2.57
Crude (\$/BBL)	50.77	2.21
Aluminium spot (\$/mt)	1697.25	-0.12
Copper SPOT (\$/mt)	5674.75	1.52
Lead Spot (\$/MT)	1851.25	0.19
Natural gas \$/MMBtu	1.74	3.62
Currency	Last Price	(%) Chg
USD-INR	72.43	0.89
EUR-INR	79.86	1.51
Bond	Last Price	(%) Chg
India 10 Yr Bond yield	6.37	-0.11

52 Wk High (A group)			52 Wk Low (A group)		
Company	Close Price	52 Wk High	Company	Close Price	52 Wk Low
--	--	--	ABB	1184	1178
--	--	--	ACC	1321	1311
--	--	--	CANBK	144	141
--	--	--	CESC	646	632
--	--	--	CUMMINS	511	496

Source: BSE

### Market Technical Outlook



Nifty opened down with a gap and momentum on the downside intensified as the day progressed which led the Nifty to close deep in red. On the daily chart, we are observing that prices are trading within the demand zone of 11090 to 11312 (shown above in the graph). Hence the mentioned demand zone holds significance. Any close below 11090 would intensify the selling pressure. However, as long as Nifty holds the mentioned demand zone there is high probability that a bounce from current level cannot be ruled out. In such scenario Nifty may test 11250 - 11320 levels. On the downside 11150 - 11090 may act as support for the day.

**We maintain our stance that one needs to adopt cautiously approach at current level and wait for some trend reversal formations.**

### News for stocks

<b>M&amp;M</b>	Mahindra and Mahindra has initiated talks with Ashok Leyland, Renault and Hyundai to supply its electric power train to its peers, seeking to establish its credentials in a mobility segment that many believe would soon alter the dynamics of the hitherto fuel fired automotive industry.
----------------	---

### Foreign Institutional Investments (FII's) Activities

Name of Segment	Net Buyer/seller	Rs In Cr
Index Futures	Net Sell	-1631.48
Stock Futures	Net Buy	2117.97
<b>Net Future Position</b>	<b>Net Buy</b>	<b>486.49</b>
Index Options	Net Sell	-172.36
Stock Options	Net Buy	55.98
<b>Net Options Position</b>	<b>Net Sell</b>	<b>-116.38</b>
FII In cash Segment	Net Sell	-1428.74
DII In cash Segment	Net Buy	7621.16
<b>Net Cash Position</b>	<b>Net Buy</b>	<b>6192.42</b>

**Technical Levels for Nifty 50 Companies**

Company	Closing 28-02-2020	Buy/Sell Trigger	Resistance 1	Resistance 2	Support 1	Support 2
ADANI PORTS	342.20	343.35	347.50	352.80	338.05	333.90
ASIAN PAINT	1797.95	1807.73	1832.32	1866.68	1773.37	1748.78
AXIS BANK	697.30	704.33	717.67	738.03	683.97	670.63
BAJAJ-AUTO	2890.00	2885.15	2919.85	2949.70	2855.30	2820.60
BAJAJ FINSV	9050.75	9054.12	9283.18	9515.62	8821.68	8592.62
BAJ FINANCE	4465.85	4472.53	4633.32	4800.78	4305.07	4144.28
BHARTIARTL	523.50	521.80	530.10	536.70	515.20	506.90
BPCL	426.35	428.58	436.67	446.98	418.27	410.18
BRITANNIA	2970.20	2969.07	3021.13	3072.07	2918.13	2866.07
CIPLA	402.10	405.53	413.02	423.93	394.62	387.13
COALINDIA	168.40	168.98	171.22	174.03	166.17	163.93
DRREDDY	2927.10	2973.62	3041.98	3156.87	2858.73	2790.37
EICHER MOT	16602.35	16589.13	16861.21	17120.08	16330.27	16058.18
GAIL	104.40	104.97	107.93	111.47	101.43	98.47
GRASIM	687.20	692.90	701.80	716.40	678.30	669.40
HCLTECH	534.35	543.18	555.17	575.98	522.37	510.38
HDFC	2175.75	2188.87	2215.43	2255.12	2149.18	2122.62
HDFC BANK	1177.65	1177.58	1185.07	1192.48	1170.17	1162.68
HEROMOTOCO	2051.75	2065.23	2096.52	2141.28	2020.47	1989.18
HINDALCO	155.90	157.40	160.70	165.50	152.60	149.30
HINDUNILVR	2174.75	2186.38	2217.77	2260.78	2143.37	2111.98
ICICIBANK	497.25	498.77	505.33	513.42	490.68	484.12
INDUSINDBK	1104.05	1102.37	1119.68	1135.32	1086.73	1069.42
INFRA TEL	214.45	214.53	217.92	221.38	211.07	207.68
INFY	731.70	736.85	751.65	771.60	716.90	702.10
IOC	105.75	104.68	108.47	111.18	101.97	98.18
ITC	197.55	196.50	200.95	204.35	193.10	188.65
JSW STEEL	235.70	237.95	243.25	250.80	230.40	225.10
KOTAK BANK	1620.35	1631.40	1649.05	1677.75	1602.70	1585.05
LT	1187.55	1182.00	1202.00	1216.45	1167.55	1147.55
M&M	457.05	465.22	476.83	496.62	445.43	433.82
MARUTI	6283.10	6251.22	6399.23	6515.37	6135.08	5987.07
NESTLE IND	15778.85	15862.63	16045.27	16311.68	15596.22	15413.58
NTPC	106.55	107.37	109.38	112.22	104.53	102.52
ONGC	91.95	91.38	93.27	94.58	90.07	88.18
POWERGRID	181.50	181.98	184.82	188.13	178.67	175.83
RELIANCE	1328.65	1336.88	1348.77	1368.88	1316.77	1304.88
SBIN	303.00	306.25	311.40	319.80	297.85	292.70
SUN PHARMA	372.90	376.53	381.97	391.03	367.47	362.03
TATAMOTORS	128.95	131.87	136.68	144.42	124.13	119.32
TATA STEEL	381.75	385.23	395.47	409.18	371.52	361.28
TCS	2000.15	2019.88	2049.77	2099.38	1970.27	1940.38
TECHM	744.40	761.48	790.92	837.43	714.97	685.53
TITAN	1254.50	1253.62	1271.58	1288.67	1236.53	1218.57
ULTRACEMCO	4219.60	4241.25	4282.50	4345.40	4178.35	4137.10
UPL	519.70	526.77	539.53	559.37	506.93	494.17
VEDL	114.00	117.37	122.63	131.27	108.73	103.47
WIPRO	221.45	223.55	227.40	233.35	217.60	213.75
YES BANK	34.60	34.92	35.53	36.47	33.98	33.37
ZEEL	239.30	238.85	245.10	250.90	233.05	226.80

(Source – IRIS)

**Guru Call: From the expert's desk**

Company	Reco Date	Reco Price (Buy on dips)	High till date	Return%
Aditya Birla Capital	22-Nov-19	95.75	115.35	20.47%
Asian Paints Ltd.	30-Mar-17	1068.10	1916.70	79.45%
Avenue Supermarts Ltd.	31-Jul-17	898.55	2560.00	184.90%
Axis Bank Ltd.	10-Apr-18	519.30	827.75	59.40%
Bajaj Finance Ltd.	11-Oct-18	2271.00	4923.40	116.79%
Bajaj Finserv Ltd	1-Nov-16	3416.80	9950.00	191.21%
Bajaj Holdings And Investment Ltd	19-May-16	1499.10	3950.00	163.49%
Bandhan Bank Ltd.	19-Dec-18	556.40	650.00	16.82%
Bharat Petroleum Corporation Ltd.	23-Oct-19	531.50	549.00	3.29%
Century Textile and Industries Ltd	25-Nov-16	326.00	656.90	101.50%
Cipla Ltd	20-Mar-17	597.30	678.45	13.59%
Colgate Palmolive	16-Sep-19	1314.00	1642.60	25.01%
Container Corporation	22-Nov-19	577.00	603.00	4.51%
Dabur India	22-Oct-19	466.00	523.25	12.29%
DLF Ltd	10-Apr-19	194.30	265.90	36.85%
Emami Limited	26-Jun-19	290.35	357.70	23.20%
Godrej Industries Ltd.	12-Feb-18	550.70	657.60	19.41%
Godrej Properties Ltd.	19-Dec-18	685.30	1189.25	73.54%
Grasim Industries Ltd.	31-May-17	1132.50	1331.00	17.53%
Havells India Ltd.	8-Dec-17	525.75	806.85	53.47%
Housing Development Finance Corp Ltd	19-Dec-17	1720.00	2499.90	45.34%
HDFC Asset Management Company Ltd.	19-Dec-18	1572.90	3844.00	144.39%
HDFC Bank Limited	10-Nov-16	639.00	1305.50	104.30%
HDFC Life Insurance Co Ltd	19-Jan-18	485.05	646.40	33.26%
Hindustan Unilever Ltd.	13-Nov-17	1290.70	2308.20	78.83%
ICICI Bank Ltd.	6-Apr-18	278.65	552.20	98.17%
ICICI Prudential Life Insurance Company Ltd.	28-Jun-18	375.80	537.30	42.97%
ICICI Lombard General Insurance	19-Sep-19	1154.90	1440.40	24.72%
Infosys Ltd.	17-Aug-17	487.60	847.00	73.71%
Kansai Nerolac Paints	16-Dec-19	529.85	551.00	3.99%
Kotak Mahindra Bank Ltd	10-Nov-16	822.10	1740.00	111.65%
Mahindra & Mahindra Ltd.	5-Jun-17	709.25	993.00	40.01%
Manappuram Finance Ltd.	24-Apr-18	119.20	194.80	63.42%
Mahanagar Gas	15-Nov-19	1029.00	1246.20	21.11%
Marico Ltd.	4-Apr-18	325.00	404.00	24.31%
Nestle India Ltd.	27-Sep-18	9729.40	16831.50	73.00%
Oberoi Realty Ltd.	23-Nov-17	508.60	641.70	26.17%
Phoenix Mills Limited	7-Jul-19	655.15	913.85	39.49%
Pidilite Industries Limited	4-Oct-16	681.60	1607.00	135.77%
Prestige Estates Projects Limited	6-Jun-19	286.70	426.00	48.59%
Nam-India	25-Nov-18	377.00	452.90	20.13%
Rites Ltd.	19-Dec-18	226.96	331.00	45.84%
RBL Bank	22-Nov-19	334.00	391.20	17.13%
State Bank Of India	28-Aug-18	308.00	373.80	21.36%
Shipping Corporation	22-Nov-19	64.00	65.95	3.05%
Tata Chemicals Limited	24-Dec-19	682.80	779.80	14.21%
Tata Global Beverages Ltd.	29-Jun-17	149.15	408.00	173.55%
Tata Consultancy Services Ltd.	8-Jan-18	1344.60	2296.20	70.77%
Trent Ltd.	19-Dec-18	348.40	794.00	127.90%
Ultratech Cement Ltd.	19-Dec-18	4084.60	4904.95	20.08%
Voltas Ltd.	27-Mar-18	613.90	741.00	20.70%
Whirlpool Of India Ltd.	7-Dec-16	872.25	2555.00	192.92%
Zee Entertainment	22-Nov-19	345.00	362.00	4.93%

**NIFTY 50 STOCKS BELOW 200SMA**

SCRIP NAME	SMA 200	CLOSING (28-02-2020)
INFY	752.89	731.70
WIPRO	256.86	221.45
RELIANCE	1377.33	1328.65
ZEEL	307.06	239.30
LT	1388.34	1187.55
ITC	251.74	197.55
HCLTECH	553.03	534.35
TATASTEEL	427.05	381.75
SBIN	317.58	303.00
GRASIM	786.84	687.20
TATAMOTORS	156.83	128.95
CIPLA	486.77	402.10
M&M	569.58	457.05
HDFC	2222.23	2175.75
HINDALCO	195.15	155.90
BPCL	434.74	426.35
HDFCBANK	1211.00	1177.65
HEROMOTOCO	2531.84	2051.75
SUNPHARMA	419.12	372.90
IOC	135.30	105.75
AXISBANK	730.14	697.30
ONGC	135.91	91.95
VEDL	151.86	114.00
UPL	590.24	519.70
GAIL	134.01	104.40
EICHERMOT	19489.10	16602.35
INDUSINDBK	1402.83	1104.05
ADANI PORTS	385.56	342.20
POWERGRID	196.13	181.50
ULTRACEMCO	4313.07	4219.60
TCS	2152.79	2000.15
JSWSTEEL	252.58	235.70
NTPC	121.72	106.55
MARUTI	6741.79	6283.10
YESBANK	71.66	34.60
BAJAJ-AUTO	2979.28	2890.00
COALINDIA	209.04	168.40
INFRA TEL	250.40	214.45

**Weekly Expiry Most Active Nifty Call Option**

Symbol	Expiry Date	Strike Price	Highest Open Interest (OI)
NIFTY	05-Mar-2020	12000	2020950
NIFTY	05-Mar-2020	11500	1908975
NIFTY	05-Mar-2020	11800	1837950

**Weekly Expiry Most Active Nifty Put Option**

Symbol	Expiry Date	Strike Price	Highest Open Interest (OI)
NIFTY	05-Mar-2020	11000	1406400
NIFTY	05-Mar-2020	10500	938700
NIFTY	05-Mar-2020	11200	774225

**Securities in Ban For Trade Date 02-03-2020**

NIL

**Bulk Deals (BSE)**

Deal Date	Scrip Name	Client Name	Deal Type	Quantity	Price
28-Feb-20	ADANIGAS	AFRO ASIA TRADE AND INVESTMENTS LTD	S	30249700	125.01
28-Feb-20	ADANIGAS	WORLD WIDE EMERGING MARKET HOLDING LTD	S	30249700	125.00
28-Feb-20	ADANIGAS	UNIVERSAL TRADE AND INVESTMENTS LTD	S	30249700	125.15
28-Feb-20	ADANIGAS	ADANI TRADELINE LLP	S	99491719	125.00
28-Feb-20	ADANIGAS	S B ADANI FAMILY TRUST	S	217402326	125.00
28-Feb-20	ADANIGAS	TOTAL HOLDINGS SAS	B	405,751,145	125.12

**Bulk Deals (NSE)**

Deal Date	Scrip Name	Client Name	Deal Type	Quantity	Price
28-Feb-20	Adani Gas Limited	TOTAL HOLDINGS SAS	BUY	5580000	134.45
28-Feb-20	Goldiam International Lim	GOLDIAM INTERNATIONAL LIMITED	BUY	124177	160.00
28-Feb-20	United Spirits Limited	RELAY BV	BUY	5075000	693.25
28-Feb-20	Repc Home Finance Ltd	FIDELITY INVESTMENT SERVICES LIMITED A/C FIDELITY	BUY	537177	284.46
28-Feb-20	Shriram Trans Fin Co. Ltd	INTEGRATED CORE STRATEGIES (ASIA) PTE. LTD.	BUY	2610875	1,198.63
28-Feb-20	The Anup Engineering Ltd	WASHINGTON UNIVERSITY	SELL	69722	522.24
28-Feb-20	United Spirits Limited	RECOVERY OFFICER I DRT II	SELL	5075000	693.25
28-Feb-20	Repc Home Finance Ltd	BIRLA MUTUAL FUND	SELL	515687	284.50
28-Feb-20	Shriram Trans Fin Co. Ltd	BLACKROCK ADVISORS LLC A/C THE MASTER TRUST BANK OF JAPAN L	SELL	2914638	1,195.76

**Note- Executed on 28<sup>th</sup> Feb 2020. Bulk Deal Buy/Sell done by fund house is considered.**

Research Analyst Registration No.	Contact	Website	mail Id
INH000002764	SMS: 'Arihant' to 56677	<a href="http://www.arihantcapital.com">www.arihantcapital.com</a>	<a href="mailto:arihant.research@arihantcapital.com">arihant.research@arihantcapital.com</a>

**Arihant is Forbes Asia's '200 Best under a \$Billion' Company  
'Best Emerging Commodities Broker' awarded by UTV Bloomberg**

**Disclaimer:** This document has been prepared by Arihant Capital Markets Limited (hereinafter called as Arihant) and its subsidiaries and associated companies. This document does not constitute an offer or solicitation for the purchase and sale of any financial instrument by Arihant. Receipt and review of this document constitutes your agreement not to circulate, redistribute, retransmit or disclose to others the contents, opinions, conclusion, or information contained herein. This document has been prepared and issued on the basis of publicly available information, internally developed data and other sources believed to be reliable. Whilst meticulous care has been taken to ensure that the facts stated are accurate and opinions given are fair and reasonable, neither the analyst nor any employee of our company is in any way is responsible for its contents and nor is its accuracy or completeness guaranteed. This document is prepared for assistance only and is not intended to be and must not alone be taken as the basis for an investment decision. All recipients of this material should before dealing and or transacting in any of the products referred to in this material make their own investigation, seek appropriate professional advice. The investments discussed in this material may not be suitable for all investors. The recipient alone shall be fully responsible/are liable for any decision taken on the basis of this material. Arihant Capital Markets Ltd (including its affiliates) or its officers, directors, personnel and employees, including persons involved in the preparation or issuance of this material may; (a) from time to time, have positions in, and buy or sell or (b) be engaged in any other transaction and earn brokerage or other compensation in the financial instruments/products discussed herein or act as advisor or lender/borrower in respect of such securities/financial instruments/products or have other potential conflict of interest with respect to any recommendation and related information and opinions. The said persons may have acted upon and/or in a manner contradictory with the information contained here and may have a position or be otherwise interested in the investment referred to in this document before its publication. The user of this report assumes the entire risk of any use made of this data/report. Arihant especially states that it has no financial liability, whatsoever, to the users of this report.

**Arihant Capital Markets Ltd**

#1011 Solitaire Corporate Park Building No.10 1<sup>st</sup> Floor  
 Andheri Ghatkopar Link Road Chakala Andheri (E) Mumbai-400093  
 T. 022-42254800. Fax: 022-42254880  
[www.arihantcapital.com](http://www.arihantcapital.com)