

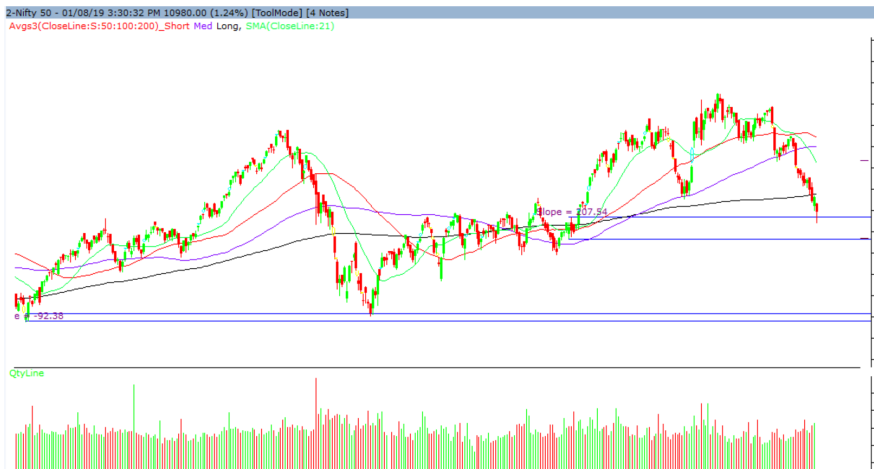
Friday, 02nd August, 2019

Indian Indices	Last Price	(%) Chg
BSE	37018.32	-1.23
NSE	10980.00	-1.24
World Indices	Last Price	(%) Chg
Dow Jones	26583.42	-1.05
Nasdaq	8111.12	-0.79
Nikkei	21031.63	-2.36
Hang Seng	26936.91	-2.27
FTSE	7584.87	-0.03
Commodity	Last Price	(%) Chg
GOLD(\$/ounce)	1444.40	0.84
Silver (\$/Ounce)	16.21	0.19
Crude (\$/BBL)	62.01	2.50
Aluminium spot (\$/mt)	1781.25	0.28
Copper SPOT (\$/mt)	5845.50	-0.34
Lead Spot (\$/MT)	1979.25	-0.13
Natural gas \$/MMBtu	2.18	-0.95
Currency	Last Price	(%) Chg
USD-INR	69.23	0.38
EUR-INR	76.69	-0.47
Bond	Last Price	(%) Chg
India 10 Yr Bond yield	6.42	0.83

52 Wk High (A group)			52 Wk Low (A group)		
Company	Close Price	52 Wk High	Company	Close Price	52 Wk Low
GSPL	207	216	BANKIND	70	69
POWERG	214	216	BAYERCR	3073	3000
--	--	--	BIOCON	223	221
--	--	--	BLUEDAR	2359	2282
--	--	--	CARE	608	603

Source: BSE

Market Technical Outlook



Nifty opened lower and momentum on the downside intensified as the day progressed which led the indices to close in red. On the daily chart, we are observing that prices tested the new demand zone of 10729 to 10939 levels and have seen small bounce. Hence a pullback rally cannot be ruled out. **We maintain our stance that Nifty is in a lower top lower bottom formation and pullback rally is likely to witness selling pressure.**

Outlook: In coming trading session if Nifty opens lower in the range of 10933 – 10905 levels one can keep a stop loss of 10880 for a target of 11026 – 11054 - 11100 levels.

News for stocks under our Fundamental coverage

Tata Motors Tata Motors to cut prices of its Electronic Vehicle segment by up to Rs 80,000 from August, according to Bloomberg report.

Foreign Institutional Investments (FII's) Activities

Name of Segment	Net Buyer/seller	Rs In Cr
Index Futures	Net Sell	-2048.76
Stock Futures	Net Sell	-371.27
Net Future Position	Net Sell	-2420.03
Index Options	Net Buy	2857.09
Stock Options	Net Buy	58.69
Net Options Position	Net Buy	2915.78
FII In cash Segment	Net Sell	-1056.55
DII In cash Segment	Net Buy	561.28
Net Cash Position	Net Sell	-495.27

Technical Levels for Nifty 50 Companies

Company	Closing 01-08-2019	Buy/Sell Trigger	Resistance 1	Resistance 2	Support 1	Support 2
ADANI PORTS	371	372	377	383	366	360
ASIANPAINT	1505	1510	1526	1548	1488	1472
AXISBANK	669	671	679	689	661	653
BAJAJ-AUTO	2538	2521	2569	2600	2490	2442
BAJAJFINSV	7082	7077	7184	7287	6975	6868
BAJFINANCE	3222	3219	3264	3306	3177	3132
BHARTIARTL	324	328	335	346	317	310
BPCL	344	343	347	350	340	336
CIPLA	2601	2599	2623	2644	2577	2553
COALINDIA	512	514	518	524	508	503
DRREDDY	202	203	205	207	200	198
EICHERMOT	2534	2536	2571	2609	2498	2463
GAIL	16563	16370	16953	17344	15979	15396
GRASIM	129	128	131	134	126	123
HCLTECH	775	774	784	793	765	755
HDFC	1022	1026	1038	1054	1010	999
HDFCBANK	2087	2089	2114	2141	2062	2037
HEROMOTOCO	2222	2220	2242	2263	2199	2177
HINDALCO	2369	2350	2399	2430	2320	2271
HINDPETRO	183	184	188	193	179	175
HINDUNILVR	1731	1729	1747	1763	1713	1694
IBULHSGFIN	522	527	539	556	509	497
ICICIBANK	417	418	425	434	410	402
INDUSINDBK	1399	1400	1434	1470	1364	1330
INFRA TEL	251	250	255	260	245	240
INFY	769	774	783	798	759	750
IOC	137	138	141	145	134	131
ITC	268	268	270	272	266	264
JSWSTEEL	225	228	233	241	220	215
KOTAKBANK	1496	1500	1515	1533	1482	1467
LT	1358	1361	1383	1408	1336	1314
M&M	549	547	554	559	541	534
MARUTI	5573	5546	5642	5711	5477	5381
NTPC	127	127	128	129	125	124
ONGC	137	137	139	142	135	133
POWERGRID	214	213	217	220	210	207
RELIANCE	1180	1173	1196	1211	1158	1135
SBIN	317	320	329	340	309	300
SUNPHARMA	425	424	429	433	419	414
TATAMOTORS	130	131	135	140	126	122
TATASTEEL	420	422	430	439	413	405
TCS	2180	2188	2210	2239	2158	2137
TECHM	626	626	633	640	619	612
TITAN	1057	1056	1071	1084	1043	1028
ULTRACEMCO	4232	4249	4318	4404	4163	4094
UPL	577	577	593	609	561	544
VEDL	145	147	151	156	142	139
WIPRO	270	272	275	279	267	264
YESBANK	88	88	91	94	86	83
ZEEL	347	348	360	373	335	322

(Source – IRIS)

Guru Call: From the expert's desk

Company	Reco Date	Reco Price (Buy on dips)	High till date	Return%
Asian Paints Ltd.	30-Mar-17	1068.1	1529	43.15%
Avenue Supermarts Ltd.	31-Jul-17	898.55	1699	89.08%
Axis Bank Ltd.	10-Apr-18	519.3	827.75	59.40%
Bajaj Finance Ltd.	11-Oct-18	2271	3693.25	62.63%
Bajaj Finserv Ltd	1-Nov-16	3416.8	8557.85	150.46%
Bajaj Holdings And Investment Ltd	19-May-16	1499.1	3800	153.49%
Bandhan Bank Ltd.	19-Dec-18	556.4	636	14.31%
Century Textile and Industries Ltd	25-Nov-16	739.3	1471	98.97%
Cipla Ltd	20-Mar-17	597.3	678.5	13.59%
DLF Ltd	10-Apr-18	194.3	202.65	4.30%
Emami Limited	26-Jun-19	290.35	326	12.28%
Godrej Industries Ltd.	12-Feb-18	550.7	657.6	19.41%
Godrej Properties Ltd.	19-Dec-18	685.3	1014.8	48.08%
Grasim Industries Ltd.	31-May-17	1132.5	1331	17.53%
Havells India Ltd.	8-Dec-17	525.75	806.85	53.47%
Housing Development Finance Corp Ltd	19-Dec-17	1720	2235	29.94%
HDFC Asset Management Company Ltd.	19-Dec-18	1572.9	2070	31.60%
HDFC Bank Limited	10-Nov-16	1251.3	2494.5	99.35%
HDFC Life Insurance Co Ltd	19-Jan-18	485.05	548.3	13.04%
Hindustan Unilever Ltd.	13-Nov-17	1290.7	1870	44.88%
ICICI Bank Ltd.	6-Apr-18	278.65	443.9	59.30%
ICICI Prudential Life Insurance Company Ltd.	28-Jun-18	375.8	428	13.89%
Infosys Ltd.	17-Aug-17	487.6	773	58.53%
Kotak Mahindra Bank Ltd	10-Nov-16	822.1	1555	89.15%
Mahindra & Mahindra Ltd.	5-Jun-17	709.25	993	40.01%
Manappuram Finance Ltd.	24-Apr-18	119.2	144.95	21.60%
Marico Ltd.	4-Apr-18	325	396.6	22.03%
Nestle India Ltd.	27-Sep-18	9729.4	11950	22.82%
Oberoi Realty Ltd.	23-Nov-17	508.6	621.7	22.24%
Phoenix Mills Limited	7-July-19	655.15	660	0.07%
Pidilite Industries Limited	4-Oct-16	681.6	1313	92.63%
Prestige Estates Projects Limited	6-Jun-18	286.7	283.5	-1.12%
Rites Ltd.	19-Dec-18	283.7	301.4	6.24%
State Bank Of India	28-Aug-18	308	365	18.51%
Tata Global Beverages Ltd.	29-Jun-17	149.15	328.8	120.45%
Tata Consultancy Services Ltd.	8-Jan-18	1344.6	2292	70.46%
Trent Ltd.	19-Dec-18	348.4	449.05	28.89%
Ultratech Cement Ltd.	19-Dec-18	4084.6	4904	20.06%
Voltas Ltd.	27-Mar-18	613.9	658.4	7.25%
Whirlpool Of India Ltd.	7-Dec-16	872.25	1955	124.13%

NIFTY 50 STOCKS BELOW 200SMA

SCRIP NAME	SMA 200	CLOSING (01-08-2019)
RELIANCE	1231.85	1180.25
ZEEL	413.67	346.85
LT	1385.39	1358.05
ITC	284	267.55
HCLTECH	1034.34	1021.55
HINDUNILVR	1737.77	1731.3
TATASTEEL	507.58	420
DRREDDY	2644.92	2533.75
GRASIM	839.7	774.55
TATAMOTORS	176.95	129.55
CIPLA	544.1	512.45
M&M	684.33	548.55
HINDALCO	208.17	182.75
BPCL	351.65	343.65
HEROMOTOCO	2751.39	2368.55
SUNPHARMA	451.15	425.1
BRITANNIA	2949.51	2600.9
IOC	145.44	136.95
AXISBANK	702.7	669.3
ONGC	154.26	136.9
VEDL	181.22	145.45
GAIL	167.44	128.6
EICHERMOT	20918.64	16562.8
INDUSINDBK	1547.03	1398.65
ADANI PORTS	372.2	371.1
TECHM	738.88	625.65
JSWSTEEL	291.81	225.25
NTPC	127.39	126.85
MARUTI	6917.49	5572.6
YESBANK	182.82	88.4
BAJAJ-AUTO	2801.31	2537.65
COALINDIA	242.93	202.45
INFRA TEL	279.04	250.95
IBULHSGFIN	733.44	521.95

Securities in Ban For Trade Date 02-08-2019

NIL.

Bulk Deals (BSE)

N/A.

Bulk Deals (NSE)

Deal Date	Scrip Name	Client Name	Deal Type	Quantity	Price
1-Aug-19	Lakshmi Vilas Bank Ltd	PROLIFIC FINVEST PRIVATE LIMITED	BUY	2000000	46.33
1-Aug-19	Reliance Infrastructu Ltd	KBC EQUITY FUND	BUY	3417129	50.05
1-Aug-19	Lakshmi Vilas Bank Ltd	ERISKA INVESTMENT FUND LTD	SELL	2000000	46.33

 Note- Executed on 01st Aug 2019. Bulk Deal Buy/Sell done by fund house is considered.

Research Analyst Registration No.	Contact	Website	mail Id
INH000002764	SMS: 'Arihant' to 56677	www.arihantcapital.com	research@arihantcapital.com

**Arihant is Forbes Asia's '200 Best under a \$Billion' Company
'Best Emerging Commodities Broker' awarded by UTV Bloomberg**

Disclaimer: This document has been prepared by Arihant Capital Markets Limited (hereinafter called as Arihant) and its subsidiaries and associated companies. This document does not constitute an offer or solicitation for the purchase and sale of any financial instrument by Arihant. Receipt and review of this document constitutes your agreement not to circulate, redistribute, retransmit or disclose to others the contents, opinions, conclusion, or information contained herein. This document has been prepared and issued on the basis of publicly available information, internally developed data and other sources believed to be reliable. Whilst meticulous care has been taken to ensure that the facts stated are accurate and opinions given are fair and reasonable, neither the analyst nor any employee of our company is in any way is responsible for its contents and nor is its accuracy or completeness guaranteed. This document is prepared for assistance only and is not intended to be and must not alone be taken as the basis for an investment decision. All recipients of this material should before dealing and or transacting in any of the products referred to in this material make their own investigation, seek appropriate professional advice. The investments discussed in this material may not be suitable for all investors. The recipient alone shall be fully responsible/are liable for any decision taken on the basis of this material. Arihant Capital Markets Ltd (including its affiliates) or its officers, directors, personnel and employees, including persons involved in the preparation or issuance of this material may; (a) from time to time, have positions in, and buy or sell or (b) be engaged in any other transaction and earn brokerage or other compensation in the financial instruments/products discussed herein or act as advisor or lender/borrower in respect of such securities/financial instruments/products or have other potential conflict of interest with respect to any recommendation and related information and opinions. The said persons may have acted upon and/or in a manner contradictory with the information contained here and may have a position or be otherwise interested in the investment referred to in this document before its publication. The user of this report assumes the entire risk of any use made of this data/report. Arihant especially states that it has no financial liability, whatsoever, to the users of this report.

Arihant Capital Markets Ltd

#1011 Solitaire Corporate Park Building No.10 1st Floor
 Andheri Ghatkopar Link Road Chakala Andheri (E) Mumbai-400093
 T. 022-42254800. Fax: 022-42254880
www.arihantcapital.com