

To join our research group on TELEGRAM, please click on the links - <https://bit.ly/34zPV5q> and <https://bit.ly/3mvi2bY>

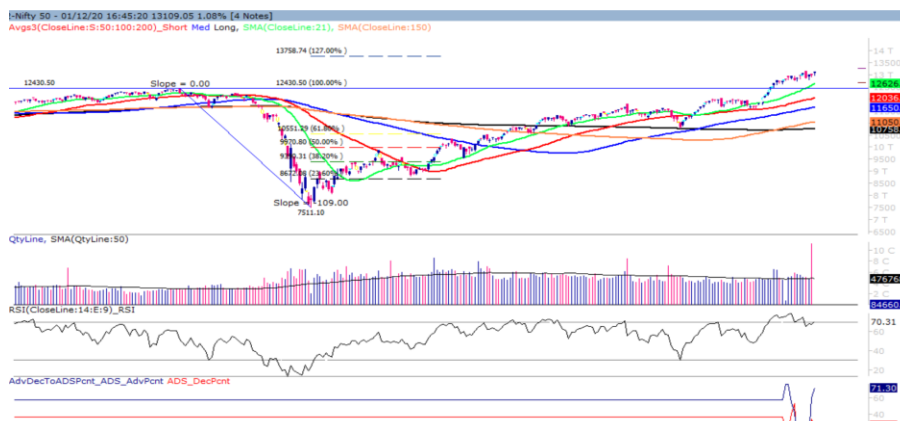
Wednesday, 02nd Dec, 2020

Indian Indices	Last Price	(%) Chg
NSE	1310905	1.08
BSE	44655.44	1.15
World Indices	Last Price	(%) Chg
Dow Jones	29823.92	0.63
Nasdaq	12355.11	1.28
Nikkei	26756.37	-0.12
Hang Seng	26527.44	-0.15
FTSE	6384.73	1.89
Commodity	Last Price	(%) Chg
GOLD(\$/ounce)	1816.90	-0.11
Silver (\$/Ounce)	24.04	-0.21
Crude (\$/BBL)	46.94	-1.01
Aluminium spot (\$/mt)	2067.50	0.39
Copper SPOT (\$/mt)	7667.00	-0.40
Lead Spot (\$/MT)	2066.50	-0.16
Natural gas \$/MMBtu	2.87	-0.28
Currency	Last Price	(%) Chg
USD-INR	73.88	-0.42
EUR-INR	88.38	-0.11
Bond	Last Price	(%) Chg
India 10 Yr Bond yield	5.93	0.32

52 Wk High (A group)			52 Wk Low (A group)		
Company	Close Price	52 Wk High	Company	Close Price	52 Wk Low
ACC	1747	1788	--	--	--
ADANIENT	421	423	--	--	--
AGL	360	371	--	--	--
ADANIPRT	422	425	--	--	--
APOLOHSP	2460	2508	--	--	--

Source: BSE

### Market Technical Outlook



Nifty, opened higher traded with positive bias throughout the day to close in green. On the daily chart, we are observing three narrow range body formations with higher highs which suggest that momentum on the upside is likely to continue. In coming trading session if Nifty trades above 13130 levels then it may test 13200 - 13300 level. On the downside, 12900 – 12800 may act as support for the day.

**We still maintain our stance that the trend remains up but a consolidation or minor correction from current level cannot be ruled out. Hence, one should adopt buy on decline strategy.**

### Foreign Institutional Investments (FII's) Activities

Name of Segment	Net Buyer/seller	Rs In Cr
Index Futures	Net Sell	-482.19
Stock Futures	Net Buy	192.23
<b>Net Future Position</b>	<b>Net Sell</b>	<b>-289.96</b>
Index Options	Net Buy	16.41
Stock Options	Net Buy	18.25
<b>Net Options Position</b>	<b>Net Buy</b>	<b>34.66</b>
FII In cash Segment	Net Buy	3242.00
DII In cash Segment	Net Sell	-1043.21
<b>Net Cash Position</b>	<b>Net Buy</b>	<b>2198.79</b>

**Guru Call: From the expert's desk**

Company	Reco Date	Reco Price (Buy on dips)	High till date	Return%
Aarti drugs	21-Aug-20	783.00	1026.95	31.16%
Aegis Logistics	11-Sep-20	204.05	259.20	27.03%
Ajanta Pharma	04-Aug-20	1661.05	1759.00	5.90%
Alkem	08-Jul-20	2427	2583.00	6.04%
Asian Paints Ltd.	30-Mar-17	1068.10	1916.70	79.45%
Avenue Supermarts Ltd.	31-Jul-17	898.55	2560.00	184.90%
Axis Bank Ltd.	10-Apr-18	519.30	827.75	59.40%
Bajaj Finance Ltd.	11-Oct-18	2271.00	4923.40	116.79%
Bajaj Finserv Ltd	1-Nov-16	3416.80	9950.00	191.21%
Bajaj Holdings And Investment Ltd	19-May-16	1499.10	3950.00	163.49%
Bajaj-Auto	12-Jun-20	2782.00	3159.00	13.55%
Bandhan Bank Ltd.	19-Dec-18	556.40	650.00	16.82%
Biocon	17-Sep-20	440.05	478.00	8.62%
Britannia	12-June-20	3366.00	4010.00	16.05%
Cadila	03-Apr-20	274.00	447.90	63.47%
CAMS	08-Oct-20	1334.90	1371.20	2.72%
CDSL	17-Sep-20	485.90	506.00	4.14%
Century Textile and Industries Ltd	25-Nov-16	326.00	656.90	101.50%
Chola finance	25-Sep-20	238.70	265.00	11.02%
Chola Holding	23-Sep-20	391.80	424.00	8.22%
Cipla Ltd	20-Mar-17	597.30	825.00	38.12%
Colgate Palmolive	16-Sep-19	1314.00	1642.60	25.01%
Crompton Greaves Consumer	11-Jun-20	225.00	300.50	33.56%
CUB	28-Sep-20	135.65	153.00	12.79%
Dabur India	22-Oct-19	466.00	535.00	14.81%
Divislab	04-Aug-20	2641.00	3389.00	28.32%
DLF Ltd	10-Apr-19	194.30	266.55	37.18%
Dr Reddy	04-Aug-20	4530.00	5512.65	21.69%
Emami Limited	26-Jun-19	290.35	407.55	40.37%
Fine Organic	17-Sep-20	3145.00	3260.00	3.65%
Fortis	14-Jul-20	127.00	142.70	12.36%
Galaxy Surface	01-Jul-20	1557.00	2039.85	31.01%
Goderj CP	16-Jun-20	634.00	762.00	20.19%
Godrej Industries Ltd.	12-Feb-18	550.70	657.60	19.41%
Hatsun AgroProd.	17-Sep-20	841.45	878.00	4.34%
HDFC Asset Management Company Ltd.	19-Dec-18	1572.90	3844.00	144.39%
HDFC Bank Limited	10-Nov-16	639.00	1305.50	104.30%
HDFC Life Insurance Co Ltd	19-Jan-18	485.05	647.60	33.51%
Hero Motocorp Ltd	29-Sep-20	3174.95	3355.50	5.69%
Hindustan Unilever Ltd.	13-Nov-17	1290.70	2614.30	102.55%
Housing Development Finance Corp Ltd	19-Dec-17	1720.00	2499.90	45.34%
ICICI Bank Ltd.	06-Apr-18	278.65	552.20	98.17%
ICICI Lombard General Insurance	19-Sep-19	1154.90	1440.40	24.72%
ICICI Prudential Life Insurance Company Ltd.	28-Jun-18	375.80	537.30	42.97%
ICICI Securities Ltd	24-Sep-20	466.65	484.40	3.80%
Indusindbnk	08-Jun-20	451.00	712.00	57.87%
Infosys Ltd.	17-Aug-17	487.60	1146.55	135.14%
Ipca Lab	11-Aug-20	2099.00	2267.95	8.05%
JK Cement	19-Jun-20	1378.00	1724.80	25.17%
JK Lakshmi Cement	03-Jul-20	276.00	306.95	11.21%
Jyoti lab	05-Aug-20	132.90	158.50	19.26%
Justdial	07-Oct-20	385.60	448.00	16.18%

**Guru Call: From the expert's desk**

Company	Reco Date	Reco Price (Buy on dips)	High till date	Return%
Kansai Nerolac Paints	16-Dec-19	529.85	551.00	3.99%
Kotak Mahindra Bank Ltd	10-Nov-16	822.10	1740.00	111.65%
Mahanagar Gas	15-Nov-19	1029.00	1246.20	21.11%
Mahindra & Mahindra Ltd.	05-Jun-17	709.25	993.00	40.01%
Manappuram Finance Ltd.	24-Apr-18	119.20	194.80	63.42%
Marico Ltd.	04-Apr-18	325.00	404.00	24.31%
Nam-India	25-Nov-18	377.00	452.90	20.13%
Nestle India Ltd.	27-Sep-18	9729.40	18369.95	88.81%
Oberoi Realty Ltd.	23-Nov-17	508.60	641.70	26.17%
PEL	02-Sep-20	1246.25	1360.45	9.16%
Pfizer	22-Jul-20	4150.00	5239.00	26.24%
Phoenix Mills Limited	07-Jul-19	655.15	979.00	49.43%
PI Industries	17-Sep-20	2012.10	2070	2.87%
Pidilite Industries Limited	04-Oct-16	681.60	1661.00	143.69%
Raymond	25-Sep-20	263.55	293.00	11.17%
RBL Bank	25-Sep-20	164.95	185.00	12.16%
Reliance	22-Apr-20	1351.00	2369.35	75.38%
Rites Ltd.	19-Dec-18	226.96	331.00	45.84%
SBI Card	16-Jul-20	719.00	868.00	20.72%
SBI Life	20-May-20	715.00	895.00	20.11%
Solara	25-Sep-20	954.90	1255.00	31.43%
Sun Pharma	07-Aug-20	525.00	564.75	7.57%
Syngene	24-Sep-20	565.70	588.00	3.94%
Tata Chemicals Limited	24-Dec-19	296.89	345.90	16.51%
Tata Consultancy Services Ltd.	08-Jan-18	1344.60	2885.00	114.56%
Tata Consumer	29-Jun-17	149.15	591.95	296.88%
Torent Pharma	04-Aug-20	2727.95	2934.00	7.55%
Trent Ltd.	19-Dec-18	348.40	804.07	130.97%
Ultratech Cement Ltd.	19-Dec-18	4084.60	4904.95	20.08%
Voltas Ltd.	27-Mar-18	613.90	741.00	20.70%
Whirlpool Of India Ltd.	07-Dec-16	872.25	2555.00	192.92%
Zee Entertainment	22-Nov-19	345.00	362.00	4.93%

**PCG PORTFOLIO**

Company	Reco Date	Reco Price (Buy on dips)	High till date	Return%
Ajanta Pharma Ltd.	16-Sep-20	1526.10	1655.80	8.50%
Alkem Laboratories Ltd.	16-Sep-20	2823.80	2987.90	5.81%
Biocon Ltd.	16-Sep-20	438.65	478.00	8.97%
Cipla Ltd.	16-Sep-20	752.60	829.00	10.15%
Fine Organic Industries Ltd.	16-Sep-20	3070.95	3095.95	0.81%
Hatsun Agro Products Ltd.	16-Sep-20	840.15	868.00	3.31%
P I Industries Ltd.	16-Sep-20	2052.80	2080.00	1.33%
Reliance Industries Ltd.	16-Sep-20	2324.55	2336.00	0.49%
Infosys Ltd.	18-Sep-20	1002.15	1154.30	15.18%
Central Depository Services (India) Ltd	23-Sep-20	479.60	506.00	5.50%
Larsen & Toubro Infotech Ltd	23-Sep-20	2448.45	3512.70	43.47%
Divi's Laboratories Ltd	28-Sep-20	3097.15	3269.90	5.58%
Poly Medicare Ltd	28-Sep-20	458.10	508.80	11.07%
Coromandel International Ltd	29-Sep-20	793.25	801.90	1.09%
Coforge Ltd	01-Oct-20	2335.80	2760.00	18.16%
Tata Consultancy Services Ltd	05-Oct-20	2705.80	2885.00	6.62%
--	--	--	--	--
--	--	--	--	--
--	--	--	--	--
--	--	--	--	--

**Weekly Expiry Most Active Nifty Call Option**

Symbol	Expiry Date	Strike Price	Highest Open Interest (OI)
NIFTY	03-Dec-2020	13500	3,926,700
NIFTY	03-Dec-2020	13100	3,000,300
NIFTY	03-Dec-2020	13400	2,850,975

**Weekly Expiry Most Active Nifty Put Option**

Symbol	Expiry Date	Strike Price	Highest Open Interest (OI)
NIFTY	03-Dec-2020	13000	4,162,125
NIFTY	03-Dec-2020	12900	3,256,875
NIFTY	03-Dec-2020	12800	2,821,500

**NIFTY 50 STOCKS BELOW 200SMA**

SCRIP NAME	SMA 200	CLOSING (01-12-2020)
HINDUNILVR	2155.02	2133.05
BPCL	379.35	379.3
IOC	86.1	85.85
UPL	443.95	433.05
BHARTIARTL	509.86	479.45
COALINDIA	135.41	126.4
--	--	--
--	--	--
--	--	--
--	--	--
--	--	--
--	--	--
--	--	--
--	--	--
--	--	--
--	--	--
--	--	--
--	--	--

**Securities in Ban For Trade Date 02-12-2020**

NIL

**Bulk Deals (NSE)**

Deal Date	Scrip Name	Client Name	Deal Type	Quantity	Price
1-Dec-20	PRAJIND	TATACAPITALFINANCIALSERVICESLIMITED	SELL	1164614	91.16
1-Dec-20	SNOWMAN	ADANI LOGISTICS LIMITED	SELL	1156147	56.73
1-Dec-20	SUBEXLTD	ALTRUIST CUSTOMER MANEGEMENT INDIA PRIVATE LIMITED	SELL	3300000	26.42
1-Dec-20	TAKE	SVL LIMITED	SELL	1600000	43.95
1-Dec-20	TAKE	FIRST STATE INVESTMENTS ICVC-FIRST STATE ASIA ALL-CAP FUND	SELL	802504	43.22
1-Dec-20	TATACOFFEE	F BORN A G	SELL	2221734	105.16

**Bulk Deals (BSE)**

N/A

 Note- Executed on 01<sup>st</sup> Dec 2020. Bulk Deal Buy/Sell done by fund house is considered

Research Analyst Registration No.	Contact	Website	mail Id
INH000002764	SMS: 'Arihant' to 56677	<a href="http://www.arihantcapital.com">www.arihantcapital.com</a>	<a href="mailto:arihant.research@arihantcapital.com">arihant.research@arihantcapital.com</a>

**Arihant is Forbes Asia's '200 Best under a \$Billion' Company**  
**'Best Emerging Commodities Broker' awarded by UTV Bloomberg**

**Disclaimer:** This document has been prepared by Arihant Capital Markets Limited (hereinafter called as Arihant) and its subsidiaries and associated companies. This document does not constitute an offer or solicitation for the purchase and sale of any financial instrument by Arihant. Receipt and review of this document constitutes your agreement not to circulate, redistribute, retransmit or disclose to others the contents, opinions, conclusion, or information contained herein. This document has been prepared and issued on the basis of publicly available information, internally developed data and other sources believed to be reliable. Whilst meticulous care has been taken to ensure that the facts stated are accurate and opinions given are fair and reasonable, neither the analyst nor any employee of our company is in any way is responsible for its contents and nor is its accuracy or completeness guaranteed. This document is prepared for assistance only and is not intended to be and must not alone be taken as the basis for an investment decision. All recipients of this material should before dealing and or transacting in any of the products referred to in this material make their own investigation, seek appropriate professional advice. The investments discussed in this material may not be suitable for all investors. The recipient alone shall be fully responsible/are liable for any decision taken on the basis of this material. Arihant Capital Markets Ltd (including its affiliates) or its officers, directors, personnel and employees, including persons involved in the preparation or issuance of this material may; (a) from time to time, have positions in, and buy or sell or (b) be engaged in any other transaction and earn brokerage or other compensation in the financial instruments/products discussed herein or act as advisor or lender/borrower in respect of such securities/financial instruments/products or have other potential conflict of interest with respect to any recommendation and related information and opinions. The said persons may have acted upon and/or in a manner contradictory with the information contained here and may have a position or be otherwise interested in the investment referred to in this document before its publication. The user of this report assumes the entire risk of any use made of this data/report. Arihant especially states that it has no financial liability, whatsoever, to the users of this report.

### Arihant Capital Markets Ltd

#1011 Solitaire Corporate Park Building No.10 1<sup>st</sup> Floor  
 Andheri Ghatkopar Link Road Chakala Andheri (E) Mumbai-400093  
 T. 022-42254800. Fax: 022-42254880  
[www.arihantcapital.com](http://www.arihantcapital.com)