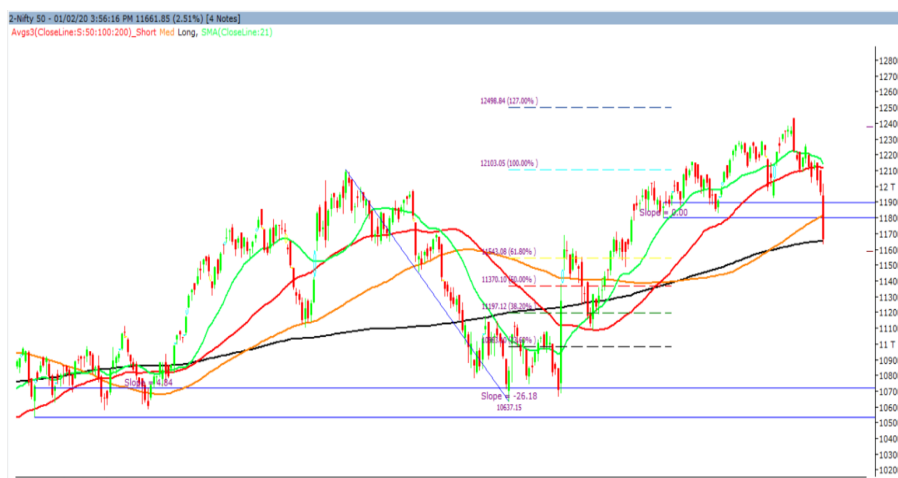


To join our research group on TELEGRAM, please click on the links - <https://bit.ly/37T17JR> and <https://bit.ly/2svtU7k>

Monday, 03rd February, 2020

Indian Indices	Last Price	(%) Chg
BSE	39735.53	-2.43
NSE	11643.80	-2.66
World Indices		
Dow Jones	28256.03	-2.09
Nasdaq	9150.94	-1.59
Nikkei	22977.91	-0.98
Hang Seng	26371.19	0.20
FTSE	7286.01	-1.30
Commodity	Last Price	(%) Chg
GOLD(\$/ounce)	1587.50	-0.03
Silver (\$/Ounce)	17.89	-0.68
Crude (\$/BBL)	56.30	-0.57
Aluminium spot (\$/mt)	1735.50	0.51
Copper SPOT (\$/mt)	5628.50	1.24
Lead Spot (\$/MT)	1869.50	-0.35
Natural gas \$/MMBtu	1.86	0.87
Currency	Last Price	(%) Chg
USD-INR	--	--
EUR-INR	--	--
Bond	Last Price	(%) Chg
India 10 Yr Bond yield	--	--

Market Technical Outlook



Nifty opened on a positive note but witnessed selling pressure during the day which led the indices to close deep in red. On the daily chart, we are observing strong bear candle which has tested the 200-day SMA (11651) but have closed marginally above it. At present the trend has turned down and 11651 remain crucial support level on closing basis. If breached, then Nifty may test 11620 – 11550 levels. On the upside, now 11720 – 11780 levels may act as resistance going forward. **Since the trend is down, rallies are likely to attract selling pressure. Hence, we maintain our stance that one needs to adopt cautious approach at current levels.**

News for stocks

BPCL	The government will come out with the expression of Interest (Eoi) inviting bidders for privatisation of BPCL within few days.
Auto Sector	Bharat Stage-IV two-wheelers are being snapped up by buyers ahead of the introduction of the BS-VI emission standards, as these are available at a steep discount to the new variants conforming to the upcoming regulations.

Foreign Institutional Investments (FII's) Activities

Name of Segment	Net Buyer/seller	Rs In Cr
Index Futures	Net Sell	-1409.75
Stock Futures	Net Sell	-86.73
Net Future Position	Net Sell	-1496.48
Index Options	Net Sell	-1331.20
Stock Options	Net Sell	-10.22
Net Options Position	Net Sell	-1341.42
FII In cash Segment	Net Sell	-1199.53
DII In cash Segment	Net Buy	36.64
Net Cash Position	Net Sell	-1162.89

52 Wk High (A group)			52 Wk Low (A group)		
Company	Close Price	52 Wk High	Company	Close Price	52 Wk Low
CANFIN	472	511	BHEL	40	39
DABUR	482	507	COALIN	173	171
DIVISLA	1996	2013	ENGINE	91	90
DLF	229	266	HAVELLS	593	586
LALPA	1771	1845	HNDZINC	191	190

Source: BSE

Technical Levels for Nifty 50 Companies

Company	Closing 01-02-2020	Buy/Sell Trigger	Resistance 1	Resistance 2	Support 1	Support 2
ADANI PORTS	362.3	364.78	368.92	375.53	358.17	354.03
ASIAN PAINT	1755.35	1773.38	1799.77	1844.18	1728.97	1702.58
AXIS BANK	705.45	713.93	725.87	746.28	693.52	681.58
BAJAJ-AUTO	3143.3	3161.23	3197.67	3252.03	3106.87	3070.43
BAJAJ FINSV	8947.4	9127.13	9434.27	9921.13	8640.27	8333.13
BAJFINANCE	4276.05	4308.95	4414.6	4553.15	4170.4	4064.75
BHARTIARTL	497.2	493.92	504.53	511.87	486.58	475.97
BPCL	443.5	448.4	459.5	475.5	432.4	421.3
BRITANNIA	3097.6	3132.53	3185.07	3272.53	3045.07	2992.53
CIPLA	444.2	444.72	451.68	459.17	437.23	430.27
COALINDIA	173.5	175.52	179.98	186.47	169.03	164.57
DRREDDY	3123.05	3119.97	3143.08	3163.12	3099.93	3076.82
EICHERMOT	20059.25	20189.17	20468.08	20876.92	19780.33	19501.42
GAIL	117.7	119.08	122.57	127.43	114.22	110.73
GRASIM	759.4	767.9	781.25	803.1	746.05	732.7
HCLTECH	590.9	589.78	598.82	606.73	581.87	572.83
HDFC	2268.25	2314.57	2376.38	2484.52	2206.43	2144.62
HDFCBANK	1198.7	1205.92	1220.48	1242.27	1184.13	1169.57
HEROMOTOCO	2446.9	2452.68	2525.22	2603.53	2374.37	2301.83
HINDALCO	184.4	185.68	188.57	192.73	181.52	178.63
HINDUNILVR	2074.9	2066.98	2103.92	2132.93	2037.97	2001.03
ICICIBANK	504.6	511.48	521.12	537.63	494.97	485.33
INDUSINDBK	1211.1	1223.02	1250.83	1290.57	1183.28	1155.47
INFRA TEL	247.15	245.92	251.83	256.52	241.23	235.32
INFY	779.5	780	790.75	802	768.75	758
IOC	108.9	110.58	113.02	117.13	106.47	104.03
ITC	219	224.58	233.67	248.33	209.92	200.83
JSWSTEEL	244.75	248.22	253.83	262.92	239.13	233.52
KOTAK BANK	1647.95	1655.82	1681.58	1715.22	1622.18	1596.42
LT	1287.4	1317.03	1354.07	1420.73	1250.37	1213.33
M&M	545.2	551.78	574.62	604.03	522.37	499.53
MARUTI	6812.65	6887.58	7034.87	7257.08	6665.37	6518.08
NESTLEIND	15524.75	15456.97	15729.53	15934.32	15252.18	14979.62
NTPC	109.3	110.07	112.08	114.87	107.28	105.27
ONGC	104.35	105.53	108.37	112.38	101.52	98.68
POWERGRID	182.4	182.05	187.15	191.9	177.3	172.2
RELIANCE	1383.35	1393.8	1416.5	1449.65	1360.65	1337.95
SBIN	302.6	307.18	318.07	333.53	291.72	280.83
SUNPHARMA	422.8	426.53	433.67	444.53	415.67	408.53
TATAMOTORS	165.6	169.37	175.03	184.47	159.93	154.27
TATASTEEL	423.8	427.97	435.83	447.87	415.93	408.07
TCS	2164.85	2136.38	2209.17	2253.48	2092.07	2019.28
TECHM	807.55	795.08	824.47	841.38	778.17	748.78
TITAN	1173.25	1185.62	1205.63	1238.02	1153.23	1133.22
ULTRACEMCO	4265.25	4332.95	4471.2	4677.15	4127	3988.75
UPL	503.65	512.1	525.5	547.35	490.25	476.85
VEDL	134.9	135.8	138.1	141.3	132.6	130.3
WIPRO	236.8	236.82	239.33	241.87	234.28	231.77
YESBANK	37.9	38.57	39.53	41.17	36.93	35.97
ZEEL	252.95	257.77	264.33	275.72	246.38	239.82

(Source – IRIS)

Guru Call: From the expert's desk

Company	Reco Date	Reco Price (Buy on dips)	High till date	Return%
Aditiya Birla Capital	22-Nov-19	95.75	115.35	20.47%
Asian Paints Ltd.	30-Mar-17	1068.1	1862.25	74.35%
Avenue Supermarts Ltd.	31-Jul-17	898.55	2010	123.69%
Axis Bank Ltd.	10-Apr-18	519.3	827.75	59.40%
Bajaj Finance Ltd.	11-Oct-18	2271	4295.75	89.16%
Bajaj Finserv Ltd	1-Nov-16	3416.8	9764.35	185.77%
Bajaj Holdings And Investment Ltd	19-May-16	1499.1	3903.95	160.42%
Bandhan Bank Ltd.	19-Dec-18	556.4	650	16.82%
Bharat Petroleum Corporation Ltd.	23-Oct-19	531.5	549	3.29%
Century Textile and Industries Ltd	25-Nov-16	326	634	94.48%
Cipla Ltd	20-Mar-17	597.3	678.45	13.59%
Colgate Palmolive	16-Sep-19	1314	1642.6	25.01%
Container Corporation	22-Nov-19	577	603	4.51%
Dabur India	22-Oct-19	466	501	7.51%
DLF Ltd	10-Apr-19	194.3	265.9	36.85%
Emami Limited	26-Jun-19	290.35	357.7	23.20%
Godrej Industries Ltd.	12-Feb-18	550.7	657.6	19.41%
Godrej Properties Ltd.	19-Dec-18	685.3	1119.6	63.37%
Grasim Industries Ltd.	31-May-17	1132.5	1331	17.53%
Havells India Ltd.	8-Dec-17	525.75	806.85	53.47%
Housing Development Finance Corp Ltd	19-Dec-17	1720	2499.9	45.34%
HDFC Asset Management Company Ltd.	19-Dec-18	1572.9	3844	144.39%
HDFC Bank Limited	10-Nov-16	639	1305.5	104.30%
HDFC Life Insurance Co Ltd	19-Jan-18	485.05	646.4	33.26%
Hindustan Unilever Ltd.	13-Nov-17	1290.7	2190	69.68%
ICICI Bank Ltd.	6-Apr-18	278.65	552.2	98.17%
ICICI Prudential Life Insurance Company Ltd.	28-Jun-18	375.8	537.3	42.97%
ICICI Lombard General Insurance	19-Sep-19	1154.9	1440.4	24.72%
Infosys Ltd.	17-Aug-17	487.6	847	73.71%
Kansai Nerolac Paints	16-Dec-19	529.85	551	3.99%
Kotak Mahindra Bank Ltd	10-Nov-16	822.1	1734.8	111.02%
Mahindra & Mahindra Ltd.	5-Jun-17	709.25	993	40.01%
Manappuram Finance Ltd.	24-Apr-18	119.2	189	58.56%
Mahanagar Gas	15-Nov-19	1029	1198	16.42%
Marico Ltd.	4-Apr-18	325	404	24.31%
Nestle India Ltd.	27-Sep-18	9729.4	15850	62.91%
Oberoi Realty Ltd.	23-Nov-17	508.6	641.7	26.17%
Phoenix Mills Limited	7-Jul-19	655.15	900	37.37%
Pidilite Industries Limited	4-Oct-16	681.6	1493.5	119.12%
Prestige Estates Projects Limited	6-Jun-19	286.7	426	48.59%
Reliance Nippon	25-Nov-18	377	386.4	2.49%
Rites Ltd.	19-Dec-18	226.96	324.8	43.11%
RBL Bank	22-Nov-19	334	391.2	17.13%
State Bank Of India	28-Aug-18	308	373.8	21.36%
Shipping Corporation	22-Nov-19	64	65.95	3.05%
Tata Chemicals Limited	24-Dec-19	682.8	762	11.60%
Tata Global Beverages Ltd.	29-Jun-17	149.15	399.45	167.82%
Tata Consultancy Services Ltd.	8-Jan-18	1344.6	2296.2	70.77%
Trent Ltd.	19-Dec-18	348.4	611.95	75.65%
Ultratech Cement Ltd.	19-Dec-18	4084.6	4904.95	20.08%
Voltas Ltd.	27-Mar-18	613.9	730.95	19.07%
Whirlpool Of India Ltd.	7-Dec-16	872.25	2510	187.76%
Zee Entertainment	22-Nov-19	345	362	4.93%

NIFTY 50 STOCKS BELOW 200SMA

SCRIP NAME	SMA 200	CLOSING (01-02-2020)
WIPRO	261.45	236.8
ZEEL	322.07	253.75
LT	1396.6	1285.9
ITC	260.79	219.25
TATASTEEL	436.25	422.8
SBIN	316.71	302.9
GRASIM	799.03	761.2
CIPLA	498.34	442.25
M&M	581.66	546.25
HINDALCO	196.9	184.45
HDFCBANK	1203.89	1192.5
HEROMOTOCO	2560.04	2420
SUNPHARMA	423.7	422.8
IOC	139.24	109.25
AXISBANK	732.02	706.05
ONGC	141.87	104
TITAN	1182.15	1173.25
VEDL	155.13	134.4
UPL	596.94	507
GAIL	139.13	116.1
INDUSINDBK	1443.56	1215
ADANI PORTS	387.38	362.35
POWERGRID	196.57	182
ULTRACEMCO	4310.75	4248
JSWSTEEL	254.51	244.7
NTPC	123.82	109.5
YESBANK	88.8	37.95
COALINDIA	215.88	173.9
INFRATEL	255.65	247.35

Bulk Deals (BSE)

N/A

Bulk Deals (NSE)

N.A

 Note- Executed on 01st Feb 2020. Bulk Deal Buy/Sell done by fund house is considered.

Weekly Expiry Most Active Nifty Call Option

Symbol	Expiry Date	Strike Price	Highest Open Interest (OI)
NIFTY	06-Feb-20	12200	3182925
NIFTY	06-Feb-20	12000	3134400
NIFTY	06-Feb-20	12500	2872050

Weekly Expiry Most Active Nifty Put Option

Symbol	Expiry Date	Strike Price	Highest Open Interest (OI)
NIFTY	06-Feb-20	11800	1528875
NIFTY	06-Feb-20	11500	1519500
NIFTY	06-Feb-20	11700	1433325

Securities in Ban For Trade Date 03-02-2020

NIL

Research Analyst Registration No.

INH000002764

Contact

SMS: 'Arihant' to 56677

Website

www.arihantcapital.com

mail Id

arihant.research@arihantcapital.com

**Arihant is Forbes Asia's '200 Best under a \$Billion' Company
'Best Emerging Commodities Broker' awarded by UTV Bloomberg**

Disclaimer: This document has been prepared by Arihant Capital Markets Limited (hereinafter called as Arihant) and its subsidiaries and associated companies. This document does not constitute an offer or solicitation for the purchase and sale of any financial instrument by Arihant. Receipt and review of this document constitutes your agreement not to circulate, redistribute, retransmit or disclose to others the contents, opinions, conclusion, or information contained herein. This document has been prepared and issued on the basis of publicly available information, internally developed data and other sources believed to be reliable. Whilst meticulous care has been taken to ensure that the facts stated are accurate and opinions given are fair and reasonable, neither the analyst nor any employee of our company is in any way is responsible for its contents and nor is its accuracy or completeness guaranteed. This document is prepared for assistance only and is not intended to be and must not alone be taken as the basis for an investment decision. All recipients of this material should before dealing and or transacting in any of the products referred to in this material make their own investigation, seek appropriate professional advice. The investments discussed in this material may not be suitable for all investors. The recipient alone shall be fully responsible/are liable for any decision taken on the basis of this material. Arihant Capital Markets Ltd (including its affiliates) or its officers, directors, personnel and employees, including persons involved in the preparation or issuance of this material may; (a) from time to time, have positions in, and buy or sell or (b) be engaged in any other transaction and earn brokerage or other compensation in the financial instruments/products discussed herein or act as advisor or lender/borrower in respect of such securities/financial instruments/products or have other potential conflict of interest with respect to any recommendation and related information and opinions. The said persons may have acted upon and/or in a manner contradictory with the information contained here and may have a position or be otherwise interested in the investment referred to in this document before its publication. The user of this report assumes the entire risk of any use made of this data/report. Arihant especially states that it has no financial liability, whatsoever, to the users of this report.

Arihant Capital Markets Ltd

#1011 Solitaire Corporate Park Building No.10 1st Floor
Andheri Ghatkopar Link Road Chakala Andheri (E) Mumbai-400093
T. 022-42254800. Fax: 022-42254880
www.arihantcapital.com