

To join our research group on TELEGRAM, please click on the links - <https://bit.ly/37T17JR> and <https://bit.ly/2svtU7k>

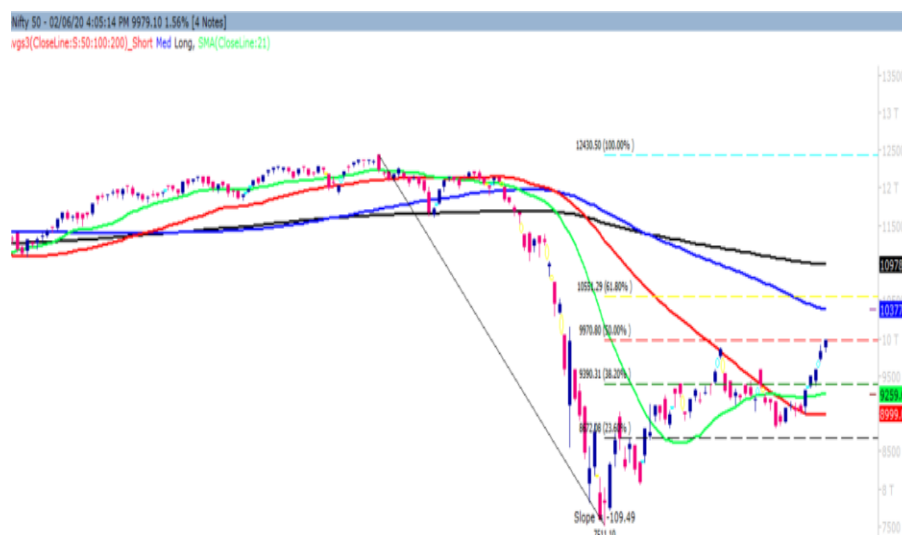
Wednesday, 03<sup>rd</sup> Jun, 2020

Indian Indices	Last Price	(%) Chg
BSE	33825.53	1.57
NSE	9979.10	1.56
World Indices	Last Price	(%) Chg
Dow Jones	25742.65	1.05
Nasdaq	9608.38	0.59
Nikkei	22581.74	1.15
Hang Seng	24260.10	1.10
FTSE	6220.14	0.87
Commodity	Last Price	(%) Chg
GOLD(\$/ounce)	1731.80	-0.13
Silver (\$/Ounce)	18.22	-0.22
Crude (\$/BBL)	39.92	0.88
Aluminium spot (\$/mt)	1553.00	-0.34
Copper SPOT (\$/mt)	5504.25	-0.30
Lead Spot (\$/MT)	1709.75	-0.47
Natural gas \$/MMBtu	1.79	0.23
Currency	Last Price	(%) Chg
USD-INR	75.34	-0.52
EUR-INR	84.09	-0.08
Bond	Last Price	(%) Chg
India 10 Yr Bond yield	5.99	-0.73

52 Wk High (A group)			52 Wk Low (A group)		
Company	Close Price	52 Wk High	Company	Close Price	52 Wk Low
AUROPHA	733	757	--	--	--
BIOCON	382	395	--	--	--
BRITANNIA	3450	3479	--	--	--
CIPLA	637	658	--	--	--
DIVISLAB	2410	2537	--	--	--

Source: BSE

### Market Technical Outlook



Nifty opened higher traded with positive bias to close in green. On the daily chart, we are observing that prices have managed to close marginally above 9970 (50% retracement of the entire fall) this suggests that upside momentum is likely to continue. In coming trading session if Nifty trades above 10000 level then it is likely to test 10150 – 10250 levels. On the downside, 9890 – 9850 levels may act as support for the day.

Since, prices have closed above 9970 there is high probability that Nifty may test 10380 – 10500 levels in couple of days. Hence, one needs to adopt cautiously positive approach at current level as stock specific activity is likely to continue.

### News for stocks

--	--
--	--

### Foreign Institutional Investments (FII's) Activities

Name of Segment	Net Buyer/seller	Rs In Cr
Index Futures	Net Buy	356.67
Stock Futures	Net Sell	-483.80
<b>Net Future Position</b>	<b>Net Sell</b>	<b>-127.13</b>
Index Options	Net Buy	483.09
Stock Options	Net Sell	-7.88
<b>Net Options Position</b>	<b>Net Buy</b>	<b>475.21</b>
FII In cash Segment	Net Buy	7498.29
DII In cash Segment	Net Buy	441.05
<b>Net Cash Position</b>	<b>Net Buy</b>	<b>7939.34</b>

**Technical Levels for Nifty 50 Companies**

Company	Closing 02-06-2020	Buy/Sell Trigger	Resistance 1	Resistance 2	Support 1	Support 2
ADANI PORTS	339.95	335.80	345.80	351.65	329.95	319.95
ASIAN PAINT	1709.30	1707.43	1734.87	1760.43	1681.87	1654.43
AXIS BANK	410.10	405.55	419.55	429.00	396.10	382.10
BAJAJ-AUTO	2796.10	2778.85	2831.50	2866.90	2743.45	2690.80
BAJAJ FINSV	5184.70	5055.12	5367.58	5550.47	4872.23	4559.77
BAJFINANCE	2346.20	2294.02	2427.18	2508.17	2213.03	2079.87
BHARTIARTL	558.10	562.17	568.23	578.37	552.03	545.97
BPCL	341.60	342.30	347.30	353.00	336.60	331.60
BRITANNIA	3451.00	3443.67	3487.33	3523.67	3407.33	3363.67
CIPLA	637.60	644.08	652.17	666.73	629.52	621.43
COALINDIA	143.40	145.18	147.37	151.33	141.22	139.03
DRREDDY	3895.30	3929.53	3973.07	4050.83	3851.77	3808.23
EICHERMOT	17396.25	17298.75	17597.50	17798.75	17097.50	16798.75
GAIL	96.55	94.85	98.80	101.05	92.60	88.65
GRASIM	596.35	591.08	606.62	616.88	580.82	565.28
HCLTECH	560.20	559.32	568.63	577.07	550.88	541.57
HDFC	1813.55	1789.35	1846.55	1879.55	1756.35	1699.15
HDFCBANK	1001.00	993.73	1012.27	1023.53	982.47	963.93
HEROMOTOCO	2318.25	2330.57	2379.23	2440.22	2269.58	2220.92
HINDALCO	141.15	141.17	143.48	145.82	138.83	136.52
HINDUNILVR	2107.40	2107.47	2124.93	2142.47	2089.93	2072.47
ICICIBANK	348.40	343.63	354.77	361.13	337.27	326.13
INDUSINDBK	434.70	425.95	447.65	460.60	413.00	391.30
INFRA TEL	223.25	225.12	228.08	232.92	220.28	217.32
INFY	708.10	705.77	713.98	719.87	699.88	691.67
IOC	85.80	85.80	86.85	87.90	84.75	83.70
ITC	197.25	198.62	200.53	203.82	195.33	193.42
JSWSTEEL	192.15	193.42	196.48	200.82	189.08	186.02
KOTAK BANK	1342.90	1331.40	1364.75	1386.60	1309.55	1276.20
LT	945.45	937.17	961.28	977.12	921.33	897.22
M&M	462.85	467.52	474.18	485.52	456.18	449.52
MARUTI	5690.10	5721.40	5817.70	5945.30	5593.80	5497.50
NESTLEIND	17014.45	17154.48	17336.96	17659.48	16831.96	16649.48
NTPC	96.75	97.25	98.45	100.15	95.55	94.35
ONGC	84.30	83.93	85.27	86.23	82.97	81.63
POWERGRID	165.05	164.00	169.40	173.75	159.65	154.25
RELIANCE	1535.70	1532.17	1543.53	1551.37	1524.33	1512.97
SBIN	170.25	169.58	171.97	173.68	167.87	165.48
SHREECEM	21201.00	21164.55	21376.45	21551.90	20989.10	20777.20
SUNPHARMA	473.10	474.08	480.02	486.93	467.17	461.23
TATAMOTORS	96.50	94.52	99.28	102.07	91.73	86.97
TATASTEEL	319.40	319.13	323.72	328.03	314.82	310.23
TCS	2047.15	2056.07	2072.08	2097.02	2031.13	2015.12
TECHM	547.50	544.62	551.23	554.97	540.88	534.27
TITAN	976.15	968.83	991.32	1006.48	953.67	931.18
ULTRACEMCO	3834.25	3819.42	3868.83	3903.42	3784.83	3735.42
UPL	424.70	422.78	430.87	437.03	416.62	408.53
VEDL	96.90	95.83	98.32	99.73	94.42	91.93
WIPRO	215.85	215.12	219.28	222.72	211.68	207.52
ZEEL	198.95	195.68	206.07	213.18	188.57	178.18

(Source – IRIS)

**Guru Call: From the expert's desk**

Company	Reco Date	Reco Price (Buy on dips)	High till date	Return%
Aditiya Birla Capital	22-Nov-19	95.75	115.35	20.47%
Asian Paints Ltd.	30-Mar-17	1068.10	1916.70	79.45%
Avenue Supermarts Ltd.	31-Jul-17	898.55	2560.00	184.90%
Axis Bank Ltd.	10-Apr-18	519.30	827.75	59.40%
Bajaj Finance Ltd.	11-Oct-18	2271.00	4923.40	116.79%
Bajaj Finserv Ltd	1-Nov-16	3416.80	9950.00	191.21%
Bajaj Holdings And Investment Ltd	19-May-16	1499.10	3950.00	163.49%
Bandhan Bank Ltd.	19-Dec-18	556.40	650.00	16.82%
Bharat Petroleum Corporation Ltd.	23-Oct-19	531.50	549.00	3.29%
Century Textile and Industries Ltd	25-Nov-16	326.00	656.90	101.50%
Cipla Ltd	20-Mar-17	597.30	678.45	13.59%
Colgate Palmolive	16-Sep-19	1314.00	1642.60	25.01%
Container Corporation	22-Nov-19	577.00	603.00	4.51%
Dabur India	22-Oct-19	466.00	525.00	12.66%
DLF Ltd	10-Apr-19	194.30	265.90	36.85%
Emami Limited	26-Jun-19	290.35	357.70	23.20%
Godrej Industries Ltd.	12-Feb-18	550.70	657.60	19.41%
Godrej Properties Ltd.	19-Dec-18	685.30	1189.25	73.54%
Grasim Industries Ltd.	31-May-17	1132.50	1331.00	17.53%
Havells India Ltd.	8-Dec-17	525.75	806.85	53.47%
Housing Development Finance Corp Ltd	19-Dec-17	1720.00	2499.90	45.34%
HDFC Asset Management Company Ltd.	19-Dec-18	1572.90	3844.00	144.39%
HDFC Bank Limited	10-Nov-16	639.00	1305.50	104.30%
HDFC Life Insurance Co Ltd	19-Jan-18	485.05	646.40	33.26%
Hindustan Unilever Ltd.	13-Nov-17	1290.70	2308.20	78.83%
ICICI Bank Ltd.	6-Apr-18	278.65	552.20	98.17%
ICICI Prudential Life Insurance Company Ltd.	28-Jun-18	375.80	537.30	42.97%
ICICI Lombard General Insurance	19-Sep-19	1154.90	1440.40	24.72%
Infosys Ltd.	17-Aug-17	487.60	847.00	73.71%
Kansai Nerolac Paints	16-Dec-19	529.85	551.00	3.99%
Kotak Mahindra Bank Ltd	10-Nov-16	822.10	1740.00	111.65%
Mahindra & Mahindra Ltd.	5-Jun-17	709.25	993.00	40.01%
Manappuram Finance Ltd.	24-Apr-18	119.20	194.80	63.42%
Mahanagar Gas	15-Nov-19	1029.00	1246.20	21.11%
Marico Ltd.	4-Apr-18	325.00	404.00	24.31%
Nestle India Ltd.	27-Sep-18	9729.40	16835.15	73.03%
Oberoi Realty Ltd.	23-Nov-17	508.60	641.70	26.17%
Phoenix Mills Limited	7-Jul-19	655.15	979.00	49.43%
Pidilite Industries Limited	4-Oct-16	681.60	1661.00	143.69%
Prestige Estates Projects Limited	6-Jun-19	286.70	426.00	48.59%
Nam-India	25-Nov-18	377.00	452.90	20.13%
Rites Ltd.	19-Dec-18	226.96	331.00	45.84%
RBL Bank	22-Nov-19	334.00	391.20	17.13%
State Bank Of India	28-Aug-18	308.00	373.80	21.36%
Shipping Corporation	22-Nov-19	64.00	65.95	3.05%
Tata Chemicals Limited	24-Dec-19	296.89	339.70	14.42%
Tata Consumer	29-Jun-17	149.15	408.00	173.55%
Tata Consultancy Services Ltd.	8-Jan-18	1344.60	2296.20	70.77%
Trent Ltd.	19-Dec-18	348.40	794.00	127.90%
Ultratech Cement Ltd.	19-Dec-18	4084.60	4904.95	20.08%
Voltas Ltd.	27-Mar-18	613.90	741.00	20.70%
Whirlpool Of India Ltd.	7-Dec-16	872.25	2555.00	192.92%
Zee Entertainment	22-Nov-19	345.00	362.00	4.93%

**NIFTY 50 STOCKS BELOW 200SMA**

SCRIP NAME	SMA 200	CLOSING (02-06-2020)
INFY	725.99	708.10
WIPRO	230.20	215.85
ZEEL	249.00	198.95
LT	1211.90	945.45
ITC	220.47	197.25
TATASTEEL	370.99	319.40
SBIN	271.47	170.25
GRASIM	681.87	596.35
TATAMOTORS	133.05	96.50
M&M	495.24	462.85
HDFC	2085.90	1813.55
HINDALCO	171.37	141.15
BPCL	424.54	341.60
ICICIBANK	444.70	348.40
HDFCBANK	1133.86	1001.00
HEROMOTOCO	2340.34	2318.25
ASIANPAINT	1721.09	1709.30
IOC	114.63	85.80
AXISBANK	629.70	410.10
ONGC	109.92	84.30
TITAN	1121.62	976.15
VEDL	127.23	96.90
UPL	509.04	424.70
GAIL	113.76	96.55
EICHERMOT	18177.70	17396.25
INDUSINDBK	1109.20	434.70
BAJFINANCE	3579.14	2346.20
ADANI PORTS	350.47	339.95
POWERGRID	185.19	165.05
ULTRACEMCO	4002.72	3834.25
TCS	2062.11	2047.15
KOTAKBANK	1508.42	1342.90
TECHM	692.44	547.50
JSWSTEEL	225.47	192.15
NTPC	109.56	96.75
MARUTI	6371.94	5690.10
BAJAJ-AUTO	2858.49	2796.10
BAJAJFINSV	7671.08	5184.70
COALINDIA	179.15	143.40
INFRA TEL	225.24	223.25

**Weekly Expiry Most Active Nifty Call Option**

Symbol	Expiry Date	Strike Price	Highest Open Interest (OI)
NIFTY	04-Jun-2020	10000	2429475
NIFTY	04-Jun-2020	10500	1625325
NIFTY	04-Jun-2020	10200	1437675

**Weekly Expiry Most Active Nifty Put Option**

Symbol	Expiry Date	Strike Price	Highest Open Interest (OI)
NIFTY	04-Jun-2020	9800	2118375
NIFTY	04-Jun-2020	9400	1898850
NIFTY	04-Jun-2020	9700	1869975

**Securities in Ban For Trade Date 03-06-2020**

IDEA

**Bulk Deals (BSE)**

Deal Date	Scrip Name	Client Name	Deal Type	Quantity	Price
2-Jun-20	COROMANDEL	E I D PARRY INDIA LIMITED	S	5850000	629.19
2-Jun-20	ADFFOODS	ABAKKUS EMERGING OPPORTUNITIES FUND - 1	B	500000	274.00

**Bulk Deals (NSE)**

Deal Date	Scrip Name	Client Name	Deal Type	Quantity	Price
2-Jun-20	Husys Consulting Ltd.	CHOICE EQUITY BROKING PRIVATE LIMITED	SELL	12000	26.69
2-Jun-20	Justdial Ltd.	BNP PARIBAS ARBITRAGE	BUY	357000	407.44

**Note- Executed on 02<sup>nd</sup> Jun 2020. Bulk Deal Buy/Sell done by fund house is considered.**

**Research Analyst Registration No.**

INH000002764

**Contact**

SMS: 'Arihant' to 56677

**Website**
[www.arihantcapital.com](http://www.arihantcapital.com)
**mail Id**
[arihant.research@arihantcapital.com](mailto:arihant.research@arihantcapital.com)

**Arihant is Forbes Asia's '200 Best under a \$Billion' Company  
'Best Emerging Commodities Broker' awarded by UTV Bloomberg**

**Disclaimer:** This document has been prepared by Arihant Capital Markets Limited (hereinafter called as Arihant) and its subsidiaries and associated companies. This document does not constitute an offer or solicitation for the purchase and sale of any financial instrument by Arihant. Receipt and review of this document constitutes your agreement not to circulate, redistribute, retransmit or disclose to others the contents, opinions, conclusion, or information contained herein. This document has been prepared and issued on the basis of publicly available information, internally developed data and other sources believed to be reliable. Whilst meticulous care has been taken to ensure that the facts stated are accurate and opinions given are fair and reasonable, neither the analyst nor any employee of our company is in any way is responsible for its contents and nor is its accuracy or completeness guaranteed. This document is prepared for assistance only and is not intended to be and must not alone be taken as the basis for an investment decision. All recipients of this material should before dealing and or transacting in any of the products referred to in this material make their own investigation, seek appropriate professional advice. The investments discussed in this material may not be suitable for all investors. The recipient alone shall be fully responsible/are liable for any decision taken on the basis of this material. Arihant Capital Markets Ltd (including its affiliates) or its officers, directors, personnel and employees, including persons involved in the preparation or issuance of this material may; (a) from time to time, have positions in, and buy or sell or (b) be engaged in any other transaction and earn brokerage or other compensation in the financial instruments/products discussed herein or act as advisor or lender/borrower in respect of such securities/financial instruments/products or have other potential conflict of interest with respect to any recommendation and related information and opinions. The said persons may have acted upon and/or in a manner contradictory with the information contained here and may have a position or be otherwise interested in the investment referred to in this document before its publication. The user of this report assumes the entire risk of any use made of this data/report. Arihant especially states that it has no financial liability, whatsoever, to the users of this report.

### Arihant Capital Markets Ltd

#1011 Solitaire Corporate Park Building No.10 1<sup>st</sup> Floor  
 Andheri Ghatkopar Link Road Chakala Andheri (E) Mumbai-400093  
 T. 022-42254800. Fax: 022-42254880  
[www.arihantcapital.com](http://www.arihantcapital.com)