

To join our research group on TELEGRAM, please click on the links - <https://bit.ly/37T17JR> and <https://bit.ly/2svtU7k>

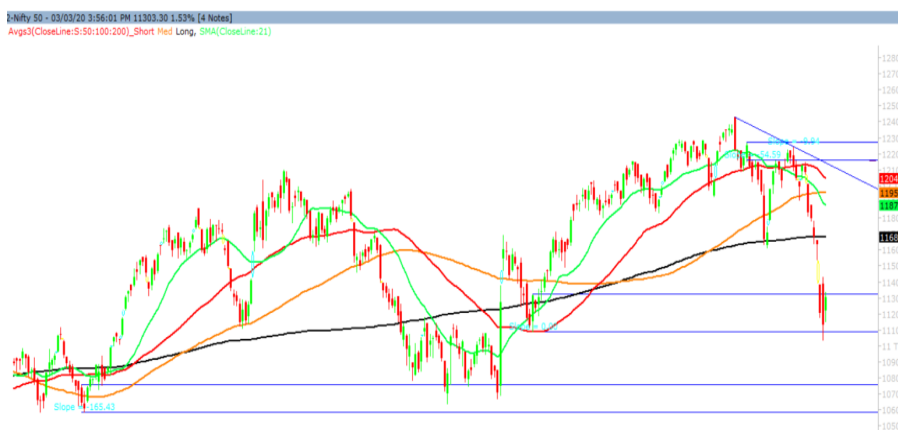
Wednesday, 04th March, 2020

Indian Indices	Last Price	(%) Chg
BSE	38623.70	1.26
NSE	11303.30	1.53
World Indices		
Dow Jones	25917.41	-2.94
Nasdaq	8684.09	-2.99
Nikkei	21156.99	0.35
Hang Seng	26204.86	-0.30
FTSE	6718.20	0.95
Commodity	Last Price	(%) Chg
GOLD(\$/ounce)	1645.90	0.09
Silver (\$/Ounce)	17.25	0.36
Crude (\$/BBL)	52.56	1.35
Aluminium spot (\$/mt)	1721.75	-0.35
Copper SPOT (\$/mt)	5718.25	1.06
Lead Spot (\$/MT)	1840.50	0.27
Natural gas \$/MMBtu	1.81	0.44
Currency	Last Price	(%) Chg
USD-INR	73.54	0.90
EUR-INR	81.74	1.07
Bond	Last Price	(%) Chg
India 10 Yr Bond yield	6.34	0.00

52 Wk High (A group)			52 Wk Low (A group)		
Company	Close Price	52 Wk High	Company	Close Price	52 Wk Low
AJANTAP	1489	1529	ABB	1164	1155
ATUL	5357	5447	CESC	631	625
IPCA	1506	1527	EXIDE	162	158
PFIZER	4416	4929	GHCL	164	162
--	--	--	GSFC	60	58.8

Source: BSE

Market Technical Outlook



Nifty opened higher and traded in a narrow range with positive bias throughout the day to close in green. On the daily chart, we are observing that prices for third consecutive trading session have closed within the demand zone of 11090 to 11312. Further, prices have formed a candlestick pattern that resembles a “Bullish Harami”. The said pattern will get activated once Nifty trades and close above 11343 levels. In such scenario Nifty may test 11380 – 11430 levels. On the downside, 11250 – 11200 levels

Broadly, looking at the candlestick pattern formation on the daily chart, it is evident that a bounce is in offing. Hence, cautiously positive approach at current level should be adopted.

News for stocks

COALINDIA	Likely to produce 600-610 mn tonnes and sell 590-600 mn tonnes this year, about the same as last year. The company needs to raise output by 400 million tonnes to meet its target of 1 billion tonnes by 2024.
MFSL	Company has approved issuance and allotment of 75 mn equity shares of the Max Financial having the face value of ₹2 each, fully paid up, on a preferential basis to Mitsui Sumitomo Insurance Company, Limited

Foreign Institutional Investments (FII's) Activities

Name of Segment	Net Buyer/seller	Rs In Cr
Index Futures	Net Buy	241.11
Stock Futures	Net Buy	2039.64
Net Future Position	Net Buy	2280.75
Index Options	Net Buy	881.21
Stock Options	Net Buy	53.60
Net Options Position	Net Buy	934.81
FII In cash Segment	Net Sell	-2415.80
DII In cash Segment	Net Buy	3135.24
Net Cash Position	Net Buy	719.44

Technical Levels for Nifty 50 Companies

Company	Closing 03-03-2020	Buy/Sell Trigger	Resistance 1	Resistance 2	Support 1	Support 2
ADANI PORTS	347.30	346.12	350.23	353.17	343.18	339.07
ASIAN PAINT	1800.55	1795.18	1823.37	1846.18	1772.37	1744.18
AXIS BANK	687.15	685.98	696.97	706.78	676.17	665.18
BAJAJ-AUTO	2692.25	2691.75	2730.50	2768.75	2653.50	2614.75
BAJAJ FINSV	8963.65	8920.10	9160.20	9356.75	8723.55	8483.45
BAJ FINANCE	4454.10	4416.37	4512.68	4571.27	4357.78	4261.47
BHARTIARTL	520.80	522.77	531.38	541.97	512.18	503.57
BPCL	425.00	421.88	430.27	435.53	416.62	408.23
BRITANNIA	3026.50	3012.33	3059.67	3092.83	2979.17	2931.83
CIPLA	425.30	418.83	435.67	446.03	408.47	391.63
COALINDIA	178.20	176.25	181.60	185.00	172.85	167.50
DRREDDY	3043.70	3017.65	3104.05	3164.40	2957.30	2870.90
EICHER MOT	17888.45	17776.48	18152.96	18417.48	17511.96	17135.48
GAIL	103.20	102.17	104.83	106.47	100.53	97.87
GRASIM	700.05	691.88	712.77	725.48	679.17	658.28
HCLTECH	565.05	562.93	570.87	576.68	557.12	549.18
HDFC	2191.40	2197.20	2221.10	2250.80	2167.50	2143.60
HDFC BANK	1181.80	1178.38	1188.77	1195.73	1171.42	1161.03
HEROMOTOCO	2054.85	2031.57	2087.13	2119.42	1999.28	1943.72
HINDALCO	159.30	156.85	162.90	166.50	153.25	147.20
HINDUNILVR	2166.65	2165.98	2190.27	2213.88	2142.37	2118.08
ICICIBANK	514.75	514.25	520.00	525.25	509.00	503.25
INDUSINDBK	1108.05	1099.67	1126.33	1144.62	1081.38	1054.72
INFRA TEL	219.35	219.13	225.22	231.08	213.27	207.18
INFY	747.00	749.08	756.92	766.83	739.17	731.33
IOC	106.65	106.25	108.20	109.75	104.70	102.75
ITC	193.85	194.62	196.68	199.52	191.78	189.72
JSWSTEEL	246.45	244.73	250.82	255.18	240.37	234.28
KOTAK BANK	1626.30	1616.55	1646.10	1665.90	1596.75	1567.20
LT	1181.30	1176.72	1191.38	1201.47	1166.63	1151.97
M&M	466.25	464.17	473.08	479.92	457.33	448.42
MARUTI	6386.05	6362.90	6445.30	6504.55	6303.65	6221.25
NESTLE IND	16359.40	16329.55	16528.85	16698.30	16160.10	15960.80
NTPC	108.90	107.72	111.13	113.37	105.48	102.07
ONGC	93.35	92.33	95.02	96.68	90.67	87.98
POWERGRID	191.70	189.48	196.92	202.13	184.27	176.83
RELIANCE	1342.85	1339.58	1357.17	1371.48	1325.27	1307.68
SBIN	289.85	289.85	294.40	298.95	285.30	280.75
SUN PHARMA	393.55	387.73	402.22	410.88	379.07	364.58
TATAMOTORS	130.35	129.00	132.75	135.15	126.60	122.85
TATA STEEL	387.55	382.88	395.67	403.78	374.77	361.98
TCS	2036.20	2036.07	2060.13	2084.07	2012.13	1988.07
TECHM	752.30	750.68	759.27	766.23	743.72	735.13
TITAN	1247.00	1248.00	1271.00	1295.00	1224.00	1201.00
ULTRACEMCO	4299.90	4262.15	4366.75	4433.60	4195.30	4090.70
UPL	521.55	520.25	527.95	534.35	513.85	506.15
VEDL	119.55	118.07	122.48	125.42	115.13	110.72
WIPRO	223.70	223.37	226.13	228.57	220.93	218.17
YES BANK	31.20	31.67	32.83	34.47	30.03	28.87
ZEEL	251.10	246.97	260.08	269.07	237.98	224.87

(Source – IRIS)

Guru Call: From the expert's desk

Company	Reco Date	Reco Price (Buy on dips)	High till date	Return%
Aditiya Birla Capital	22-Nov-19	95.75	115.35	20.47%
Asian Paints Ltd.	30-Mar-17	1068.10	1916.70	79.45%
Avenue Supermarts Ltd.	31-Jul-17	898.55	2560.00	184.90%
Axis Bank Ltd.	10-Apr-18	519.30	827.75	59.40%
Bajaj Finance Ltd.	11-Oct-18	2271.00	4923.40	116.79%
Bajaj Finserv Ltd	1-Nov-16	3416.80	9950.00	191.21%
Bajaj Holdings And Investment Ltd	19-May-16	1499.10	3950.00	163.49%
Bandhan Bank Ltd.	19-Dec-18	556.40	650.00	16.82%
Bharat Petroleum Corporation Ltd.	23-Oct-19	531.50	549.00	3.29%
Century Textile and Industries Ltd	25-Nov-16	326.00	656.90	101.50%
Cipla Ltd	20-Mar-17	597.30	678.45	13.59%
Colgate Palmolive	16-Sep-19	1314.00	1642.60	25.01%
Container Corporation	22-Nov-19	577.00	603.00	4.51%
Dabur India	22-Oct-19	466.00	523.25	12.29%
DLF Ltd	10-Apr-19	194.30	265.90	36.85%
Emami Limited	26-Jun-19	290.35	357.70	23.20%
Godrej Industries Ltd.	12-Feb-18	550.70	657.60	19.41%
Godrej Properties Ltd.	19-Dec-18	685.30	1189.25	73.54%
Grasim Industries Ltd.	31-May-17	1132.50	1331.00	17.53%
Havells India Ltd.	8-Dec-17	525.75	806.85	53.47%
Housing Development Finance Corp Ltd	19-Dec-17	1720.00	2499.90	45.34%
HDFC Asset Management Company Ltd.	19-Dec-18	1572.90	3844.00	144.39%
HDFC Bank Limited	10-Nov-16	639.00	1305.50	104.30%
HDFC Life Insurance Co Ltd	19-Jan-18	485.05	646.40	33.26%
Hindustan Unilever Ltd.	13-Nov-17	1290.70	2308.20	78.83%
ICICI Bank Ltd.	6-Apr-18	278.65	552.20	98.17%
ICICI Prudential Life Insurance Company Ltd.	28-Jun-18	375.80	537.30	42.97%
ICICI Lombard General Insurance	19-Sep-19	1154.90	1440.40	24.72%
Infosys Ltd.	17-Aug-17	487.60	847.00	73.71%
Kansai Nerolac Paints	16-Dec-19	529.85	551.00	3.99%
Kotak Mahindra Bank Ltd	10-Nov-16	822.10	1740.00	111.65%
Mahindra & Mahindra Ltd.	5-Jun-17	709.25	993.00	40.01%
Manappuram Finance Ltd.	24-Apr-18	119.20	194.80	63.42%
Mahanagar Gas	15-Nov-19	1029.00	1246.20	21.11%
Marico Ltd.	4-Apr-18	325.00	404.00	24.31%
Nestle India Ltd.	27-Sep-18	9729.40	16831.50	73.00%
Oberoi Realty Ltd.	23-Nov-17	508.60	641.70	26.17%
Phoenix Mills Limited	7-Jul-19	655.15	913.85	39.49%
Pidilite Industries Limited	4-Oct-16	681.60	1607.00	135.77%
Prestige Estates Projects Limited	6-Jun-19	286.70	426.00	48.59%
Nam-India	25-Nov-18	377.00	452.90	20.13%
Rites Ltd.	19-Dec-18	226.96	331.00	45.84%
RBL Bank	22-Nov-19	334.00	391.20	17.13%
State Bank Of India	28-Aug-18	308.00	373.80	21.36%
Shipping Corporation	22-Nov-19	64.00	65.95	3.05%
Tata Chemicals Limited	24-Dec-19	682.80	779.80	14.21%
Tata Global Beverages Ltd.	29-Jun-17	149.15	408.00	173.55%
Tata Consultancy Services Ltd.	8-Jan-18	1344.60	2296.20	70.77%
Trent Ltd.	19-Dec-18	348.40	794.00	127.90%
Ultratech Cement Ltd.	19-Dec-18	4084.60	4904.95	20.08%
Voltas Ltd.	27-Mar-18	613.90	741.00	20.70%
Whirlpool Of India Ltd.	7-Dec-16	872.25	2555.00	192.92%
Zee Entertainment	22-Nov-19	345.00	362.00	4.93%

NIFTY 50 STOCKS BELOW 200SMA

SCRIP NAME	SMA 200	CLOSING (03-03-2020)
INFY	753.17	747.00
WIPRO	256.21	223.70
RELIANCE	1378.16	1342.85
ZEEL	306.05	251.10
LT	1386.75	1181.30
ITC	250.77	193.85
TATASTEEL	426.10	387.55
SBIN	317.36	289.85
GRASIM	785.26	700.05
TATAMOTORS	156.29	130.35
CIPLA	485.39	425.30
M&M	568.04	466.25
HDFC	2224.50	2191.40
HINDALCO	194.77	159.30
BPCL	435.35	425.00
HDFCBANK	1211.37	1181.80
HEROMOTOCO	2526.89	2054.85
SUNPHARMA	418.85	393.55
IOC	134.92	106.65
AXISBANK	729.68	687.15
ONGC	135.18	93.35
VEDL	151.44	119.55
UPL	589.06	521.55
GAIL	133.33	103.20
EICHERMOT	19473.70	17888.45
INDUSINDBK	1399.64	1108.05
ADANI PORTS	385.32	347.30
POWERGRID	196.18	191.70
ULTRACEMCO	4311.46	4299.90
TCS	2151.87	2036.20
JSWSTEEL	252.20	246.45
NTPC	121.54	108.90
MARUTI	6739.54	6386.05
YESBANK	70.42	31.20
BAJAJ-AUTO	2977.15	2692.25
COALINDIA	208.36	178.20
INFRA TEL	249.91	219.35

Weekly Expiry Most Active Nifty Call Option

Symbol	Expiry Date	Strike Price	Highest Open Interest (OI)
NIFTY	05-Mar-2020	11600	1995450
NIFTY	05-Mar-2020	11500	1838775
NIFTY	05-Mar-2020	11800	1783575

Weekly Expiry Most Active Nifty Put Option

Symbol	Expiry Date	Strike Price	Highest Open Interest (OI)
NIFTY	05-Mar-2020	11000	1903125
NIFTY	05-Mar-2020	11200	1536225
NIFTY	05-Mar-2020	10500	1373625

Securities in Ban For Trade Date 04-03-2020

NIL

Bulk Deals (BSE)

Deal Date	Scrip Name	Client Name	Deal Type	Quantity	Price
3-Mar-20	BESTAGRO	NAND KISHORE GARG	S	75000	240.00
3-Mar-20	BESTAGRO	SEEMA GARG	S	75000	240.00
3-Mar-20	BESTAGRO	RESONANCE OPPORTUNITIES FUND	B	150000	240.00
3-Mar-20	CERA	NALANDA INDIA EQUITY FUND LIMITED	B	106800	2,499.90

Bulk Deals (NSE)

Deal Date	Scrip Name	Client Name	Deal Type	Quantity	Price
3-Mar-20	Cera Sanitaryware Limited	NALANDA INDIA EQUITY FUND LIMITED	BUY	206400	2,498.79
3-Mar-20	Elgi Equipments Ltd	SBI MUTUAL FUND	BUY	4664801	198.00
3-Mar-20	Cera Sanitaryware Limited	RAHUL RAMKUMAR RATHI	SELL	79958	2,500.01
3-Mar-20	Elgi Equipments Ltd	SBI MUTUAL FUND	SELL	4664785	198.00
3-Mar-20	Narayana Hrudayalaya Ltd.	CDC INDIA OPPORTUNITIES LIMITED	SELL	4360804	320.29
3-Mar-20	Narayana Hrudayalaya Ltd.	CDC GROUP PLC	SELL	2890614	320.04

Note- Executed on 03rd Mar 2020. Bulk Deal Buy/Sell done by fund house is considered.

Research Analyst Registration No.	Contact	Website	mail Id
INH000002764	SMS: 'Arihant' to 56677	www.arihantcapital.com	arihant.research@arihantcapital.com

**Arihant is Forbes Asia's '200 Best under a \$Billion' Company
'Best Emerging Commodities Broker' awarded by UTV Bloomberg**

Disclaimer: This document has been prepared by Arihant Capital Markets Limited (hereinafter called as Arihant) and its subsidiaries and associated companies. This document does not constitute an offer or solicitation for the purchase and sale of any financial instrument by Arihant. Receipt and review of this document constitutes your agreement not to circulate, redistribute, retransmit or disclose to others the contents, opinions, conclusion, or information contained herein. This document has been prepared and issued on the basis of publicly available information, internally developed data and other sources believed to be reliable. Whilst meticulous care has been taken to ensure that the facts stated are accurate and opinions given are fair and reasonable, neither the analyst nor any employee of our company is in any way is responsible for its contents and nor is its accuracy or completeness guaranteed. This document is prepared for assistance only and is not intended to be and must not alone be taken as the basis for an investment decision. All recipients of this material should before dealing and or transacting in any of the products referred to in this material make their own investigation, seek appropriate professional advice. The investments discussed in this material may not be suitable for all investors. The recipient alone shall be fully responsible/are liable for any decision taken on the basis of this material. Arihant Capital Markets Ltd (including its affiliates) or its officers, directors, personnel and employees, including persons involved in the preparation or issuance of this material may; (a) from time to time, have positions in, and buy or sell or (b) be engaged in any other transaction and earn brokerage or other compensation in the financial instruments/products discussed herein or act as advisor or lender/borrower in respect of such securities/financial instruments/products or have other potential conflict of interest with respect to any recommendation and related information and opinions. The said persons may have acted upon and/or in a manner contradictory with the information contained here and may have a position or be otherwise interested in the investment referred to in this document before its publication. The user of this report assumes the entire risk of any use made of this data/report. Arihant especially states that it has no financial liability, whatsoever, to the users of this report.

Arihant Capital Markets Ltd

#1011 Solitaire Corporate Park Building No.10 1st Floor
 Andheri Ghatkopar Link Road Chakala Andheri (E) Mumbai-400093
 T. 022-42254800. Fax: 022-42254880
www.arihantcapital.com