

To join our research group on TELEGRAM, please click on the links - <https://bit.ly/34zPV5q> and <https://bit.ly/3mvi2bY>

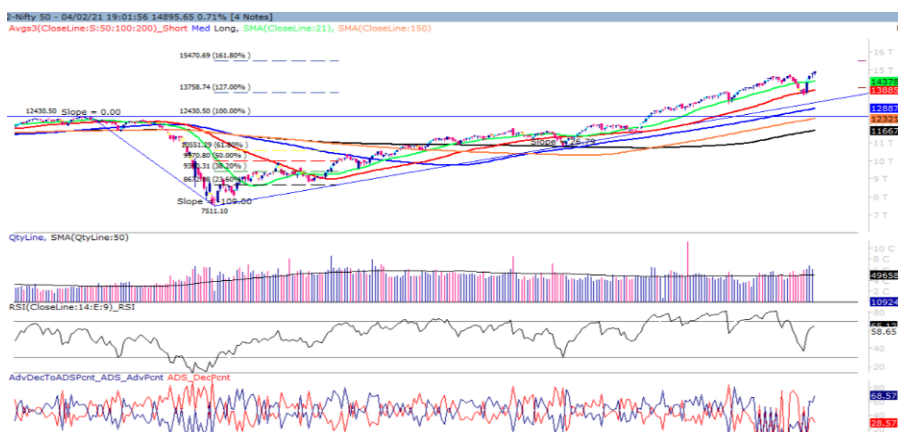
Friday, 05th Feb, 2021

Indian Indices	Last Price	(%) Chg
NSE	14895.65	0.71
BSE	50614.29	0.71
World Indices	Last Price	(%) Chg
Dow Jones	31055.86	1.08
Nasdaq	13777.74	1.23
Nikkei	28730.97	1.37
Hang Seng	29463.75	1.20
FTSE	6503.72	-0.06
Commodity	Last Price	(%) Chg
GOLD(\$/ounce)	1793.50	0.16
Silver (\$/Ounce)	26.31	0.29
Crude (\$/BBL)	59.28	0.75
Aluminium spot (\$/mt)	1998.50	0.14
Copper SPOT (\$/mt)	7836.25	0.25
Lead Spot (\$/MT)	2043.75	0.34
Natural gas \$/MMBtu	2.96	0.92
Currency	Last Price	(%) Chg
USD-INR	73.12	-0.01
EUR-INR	87.78	-0.24
Bond	Last Price	(%) Chg
India 10 Yr Bond yield	6.07	-0.16

52 Wk High (A group)			52 Wk Low (A group)		
Company	Close Price	52 Wk High	Company	Close Price	52 Wk Low
ABB	1516	1533	--	--	--
ADANIENT	590	611	--	--	--
ADANIPRT	568	573	--	--	--
APOLOTYR	243	255	--	--	--
ASHOKLEY	135	138	--	--	--

Source: BSE

Market Technical Outlook



Nifty, opened on a subdued note but witnessed upside momentum in the latter half of the session which led nifty to close in green. On the daily chart we are observing three narrow range body formations with higher high which suggests that the undertone is positive. In coming trading session if Nifty trades above 14913 levels then it may test 15000 - 15100 levels. On the downside, 14700 - 14600 levels may act as support for the day.

We maintain our stance that nifty made a new all-time high but the momentum indicator is not showing strength which suggests that a consolidation or minor pullback cannot be ruled out. Hence cautiously positive approach at current level should be adopted

Foreign Institutional Investments (FIIs) Activities

Name of Segment	Net Buyer/seller	Rs In Cr
Index Futures	Net Sell	-1555.11
Stock Futures	Net Buy	518.42
Net Future Position	Net Sell	-1036.69
Index Options	Net Buy	6706.44
Stock Options	Net Sell	-35.71
Net Options Position	Net Buy	6670.73
FI In cash Segment	Net Buy	1936.74
DII In cash Segment	Net Sell	-768.55
Net Cash Position	Net Buy	1168.19

Guru Call: From the expert's desk

Company	Reco Date	Reco Price (Buy on dips)	High till date	Return%
Aarti drugs	21-Aug-20	783.00	1026.95	31.16%
Aegis Logistics	11-Sep-20	204.05	259.20	27.03%
Ajanta Pharma	04-Aug-20	1661.05	1759.00	5.90%
Alkem	08-Jul-20	2427	2583.00	6.04%
Asian Paints Ltd.	30-Mar-17	1068.10	1916.70	79.45%
Avenue Supermarts Ltd.	31-Jul-17	898.55	2560.00	184.90%
Axis Bank Ltd.	10-Apr-18	519.30	827.75	59.40%
Bajaj Finance Ltd.	11-Oct-18	2271.00	4923.40	116.79%
Bajaj Finserv Ltd	1-Nov-16	3416.80	9950.00	191.21%
Bajaj Holdings And Investment Ltd	19-May-16	1499.10	3950.00	163.49%
Bajaj-Auto	12-Jun-20	2782.00	3159.00	13.55%
Bandhan Bank Ltd.	19-Dec-18	556.40	650.00	16.82%
Biocon	17-Sep-20	440.05	478.00	8.62%
Britannia	12-June-20	3366.00	4010.00	16.05%
Cadila	03-Apr-20	274.00	447.90	63.47%
CAMS	08-Oct-20	1334.90	1371.20	2.72%
CDSL	17-Sep-20	485.90	506.00	4.14%
Century Textile and Industries Ltd	25-Nov-16	326.00	656.90	101.50%
Chola finance	25-Sep-20	238.70	265.00	11.02%
Chola Holding	23-Sep-20	391.80	424.00	8.22%
Cipla Ltd	20-Mar-17	597.30	825.00	38.12%
Colgate Palmolive	16-Sep-19	1314.00	1642.60	25.01%
Crompton Greaves Consumer	11-Jun-20	225.00	300.50	33.56%
CUB	28-Sep-20	135.65	153.00	12.79%
Dabur India	22-Oct-19	466.00	535.00	14.81%
Divislab	04-Aug-20	2641.00	3389.00	28.32%
DLF Ltd	10-Apr-19	194.30	266.55	37.18%
Dr Reddy	04-Aug-20	4530.00	5512.65	21.69%
Emami Limited	26-Jun-19	290.35	407.55	40.37%
Fine Organic	17-Sep-20	3145.00	3260.00	3.65%
Fortis	14-Jul-20	127.00	142.70	12.36%
Galaxy Surface	01-Jul-20	1557.00	2039.85	31.01%
Goderj CP	16-Jun-20	634.00	762.00	20.19%
Godrej Industries Ltd.	12-Feb-18	550.70	657.60	19.41%
Hatsun AgroProd.	17-Sep-20	841.45	878.00	4.34%
HDFC Asset Management Company Ltd.	19-Dec-18	1572.90	3844.00	144.39%
HDFC Bank Limited	10-Nov-16	639.00	1305.50	104.30%
HDFC Life Insurance Co Ltd	19-Jan-18	485.05	647.60	33.51%
Hero Motocorp Ltd	29-Sep-20	3174.95	3355.50	5.69%
Hindustan Unilever Ltd.	13-Nov-17	1290.70	2614.30	102.55%
Housing Development Finance Corp Ltd	19-Dec-17	1720.00	2499.90	45.34%
ICICI Bank Ltd.	06-Apr-18	278.65	552.20	98.17%
ICICI Lombard General Insurance	19-Sep-19	1154.90	1440.40	24.72%
ICICI Prudential Life Insurance Company Ltd.	28-Jun-18	375.80	537.30	42.97%
ICICI Securities Ltd	24-Sep-20	466.65	484.40	3.80%
Indusindbnk	08-Jun-20	451.00	712.00	57.87%
Infosys Ltd.	17-Aug-17	487.60	1146.55	135.14%
Ipca Lab	11-Aug-20	2099.00	2267.95	8.05%
JK Cement	19-Jun-20	1378.00	1724.80	25.17%
JK Lakshmi Cement	03-Jul-20	276.00	306.95	11.21%
Jyoti lab	05-Aug-20	132.90	158.50	19.26%
Justdial	07-Oct-20	385.60	448.00	16.18%

Guru Call: From the expert's desk

Company	Reco Date	Reco Price (Buy on dips)	High till date	Return%
Kansai Nerolac Paints	16-Dec-19	529.85	551.00	3.99%
Kotak Mahindra Bank Ltd	10-Nov-16	822.10	1740.00	111.65%
Mahanagar Gas	15-Nov-19	1029.00	1246.20	21.11%
Mahindra & Mahindra Ltd.	05-Jun-17	709.25	993.00	40.01%
Manappuram Finance Ltd.	24-Apr-18	119.20	194.80	63.42%
Marico Ltd.	04-Apr-18	325.00	404.00	24.31%
Nam-India	25-Nov-18	377.00	452.90	20.13%
Nestle India Ltd.	27-Sep-18	9729.40	18369.95	88.81%
Oberoi Realty Ltd.	23-Nov-17	508.60	641.70	26.17%
PEL	02-Sep-20	1246.25	1360.45	9.16%
Pfizer	22-Jul-20	4150.00	5239.00	26.24%
Phoenix Mills Limited	07-Jul-19	655.15	979.00	49.43%
PI Industries	17-Sep-20	2012.10	2070	2.87%
Pidilite Industries Limited	04-Oct-16	681.60	1661.00	143.69%
Raymond	25-Sep-20	263.55	293.00	11.17%
RBL Bank	25-Sep-20	164.95	185.00	12.16%
Reliance	22-Apr-20	1351.00	2369.35	75.38%
Rites Ltd.	19-Dec-18	226.96	331.00	45.84%
SBI Card	16-Jul-20	719.00	868.00	20.72%
SBI Life	20-May-20	715.00	895.00	20.11%
Solara	25-Sep-20	954.90	1255.00	31.43%
Sun Pharma	07-Aug-20	525.00	564.75	7.57%
Syngene	24-Sep-20	565.70	588.00	3.94%
Tata Chemicals Limited	24-Dec-19	296.89	345.90	16.51%
Tata Consultancy Services Ltd.	08-Jan-18	1344.60	2885.00	114.56%
Tata Consumer	29-Jun-17	149.15	591.95	296.88%
Torent Pharma	04-Aug-20	2727.95	2934.00	7.55%
Trent Ltd.	19-Dec-18	348.40	804.07	130.97%
Ultratech Cement Ltd.	19-Dec-18	4084.60	4904.95	20.08%
Voltas Ltd.	27-Mar-18	613.90	741.00	20.70%
Whirlpool Of India Ltd.	07-Dec-16	872.25	2555.00	192.92%
Zee Entertainment	22-Nov-19	345.00	362.00	4.93%

PCG PORTFOLIO

Company	Reco Date	Reco Price (Buy on dips)	High till date	Return%
Ajanta Pharma Ltd.	16-Sep-20	1526.10	1655.80	8.50%
Alkem Laboratories Ltd.	16-Sep-20	2823.80	2987.90	5.81%
Biocon Ltd.	16-Sep-20	438.65	478.00	8.97%
Cipla Ltd.	16-Sep-20	752.60	829.00	10.15%
Fine Organic Industries Ltd.	16-Sep-20	3070.95	3095.95	0.81%
Hatsun Agro Products Ltd.	16-Sep-20	840.15	868.00	3.31%
P I Industries Ltd.	16-Sep-20	2052.80	2080.00	1.33%
Reliance Industries Ltd.	16-Sep-20	2324.55	2336.00	0.49%
Infosys Ltd.	18-Sep-20	1002.15	1154.30	15.18%
Central Depository Services (India) Ltd	23-Sep-20	479.60	506.00	5.50%
Larsen & Toubro Infotech Ltd	23-Sep-20	2448.45	3512.70	43.47%
Divi's Laboratories Ltd	28-Sep-20	3097.15	3269.90	5.58%
Poly Medicare Ltd	28-Sep-20	458.10	508.80	11.07%
Coromandel International Ltd	29-Sep-20	793.25	801.90	1.09%
Coforge Ltd	01-Oct-20	2335.80	2760.00	18.16%
Tata Consultancy Services Ltd	05-Oct-20	2705.80	2885.00	6.62%
--	--	--	--	--
--	--	--	--	--
--	--	--	--	--
--	--	--	--	--

Weekly Expiry Most Active Nifty Call Option

Symbol	Expiry Date	Strike Price	Highest Open Interest (Contracts)
NIFTY	11-FEB-2021	15000	23,319
NIFTY	11-FEB-2021	15500	20,829
NIFTY	11-FEB-2021	16000	14,213

Weekly Expiry Most Active Nifty Put Option

Symbol	Expiry Date	Strike Price	Highest Open Interest (Contracts)
NIFTY	11-FEB-2021	14000	17,675
NIFTY	11-FEB-2021	14500	17,208
NIFTY	11-FEB-2021	13500	16,282

NIFTY 50 STOCKS BELOW 200SMA

SCRIP NAME	SMA 200	CLOSING (04-02-2021)
--	--	--
--	--	--
--	--	--
--	--	--
--	--	--
--	--	--
--	--	--
--	--	--
--	--	--
--	--	--

Securities in Ban For Trade Date 05-02-2021

PNB, SAIL

IPO Listing Today

Company Name: Stove Kraft Limited, BSE Code: 543260, NSE Symbol: STOVEKRAFT, Issue Price: Rs 385 per share, Series: EQ

Bulk Deals (NSE)

Deal Date	Scrip Name	Client Name	Deal Type	Quantity	Price
4-Feb-21	HOMEFIRST	AL MEHWAR COMMERCIAL INVESTMENTS L.L.C.	BUY	627586	563.41
4-Feb-21	L&TFH-RE	CITIGROUP GLOBAL MARKETS MAURITIUS PRIVATE LIMITED	BUY	2780320	26.04
4-Feb-21	L&TFH-RE	CITIGROUP GLOBAL MARKETS MAURITIUS PVT LTD	SELL	6190000	26.54

Bulk Deals (BSE)

Deal Date	Scrip Name	Client Name	Deal Type	Quantity	Price
4-Feb-21	SIS	NORGES BANK ON ACCOUNT OF THE GOVERNMENT PENSION FUND GLOBAL	B	1000000	403.00
4-Feb-21	SIS	STEADVIEW CAPITAL MAURITIUS LIMITED	S	2153900	403.09

 Note- Executed on 04th Feb 2021. Bulk Deal Buy/Sell done by fund house is considered

Research Analyst Registration No.	Contact	Website	mail Id
INH000002764	SMS: 'Arihant' to 56677	www.arihantcapital.com	arihant.research@arihantcapital.com

**Arihant is Forbes Asia's '200 Best under a \$Billion' Company
'Best Emerging Commodities Broker' awarded by UTV Bloomberg**

Disclaimer: This document has been prepared by Arihant Capital Markets Limited (hereinafter called as Arihant) and its subsidiaries and associated companies. This document does not constitute an offer or solicitation for the purchase and sale of any financial instrument by Arihant. Receipt and review of this document constitutes your agreement not to circulate, redistribute, retransmit or disclose to others the contents, opinions, conclusion, or information contained herein. This document has been prepared and issued on the basis of publicly available information, internally developed data and other sources believed to be reliable. Whilst meticulous care has been taken to ensure that the facts stated are accurate and opinions given are fair and reasonable, neither the analyst nor any employee of our company is in any way is responsible for its contents and nor is its accuracy or completeness guaranteed. This document is prepared for assistance only and is not intended to be and must not alone be taken as the basis for an investment decision. All recipients of this material should before dealing and or transacting in any of the products referred to in this material make their own investigation, seek appropriate professional advice. The investments discussed in this material may not be suitable for all investors. The recipient alone shall be fully responsible/are liable for any decision taken on the basis of this material. Arihant Capital Markets Ltd (including its affiliates) or its officers, directors, personnel and employees, including persons involved in the preparation or issuance of this material may; (a) from time to time, have positions in, and buy or sell or (b) be engaged in any other transaction and earn brokerage or other compensation in the financial instruments/products discussed herein or act as advisor or lender/borrower in respect of such securities/financial instruments/products or have other potential conflict of interest with respect to any recommendation and related information and opinions. The said persons may have acted upon and/or in a manner contradictory with the information contained here and may have a position or be otherwise interested in the investment referred to in this document before its publication. The user of this report assumes the entire risk of any use made of this data/report. Arihant especially states that it has no financial liability, whatsoever, to the users of this report.

Arihant Capital Markets Ltd
 #1011 Solitaire Corporate Park Building No.10 1st Floor
 Andheri Ghatkopar Link Road Chakala Andheri (E) Mumbai-400093
 T. 022-42254800. Fax: 022-42254880
www.arihantcapital.com