

To join our research group on TELEGRAM, please click on the links - <https://bit.ly/37T17JR> and <https://bit.ly/2svtU7k>

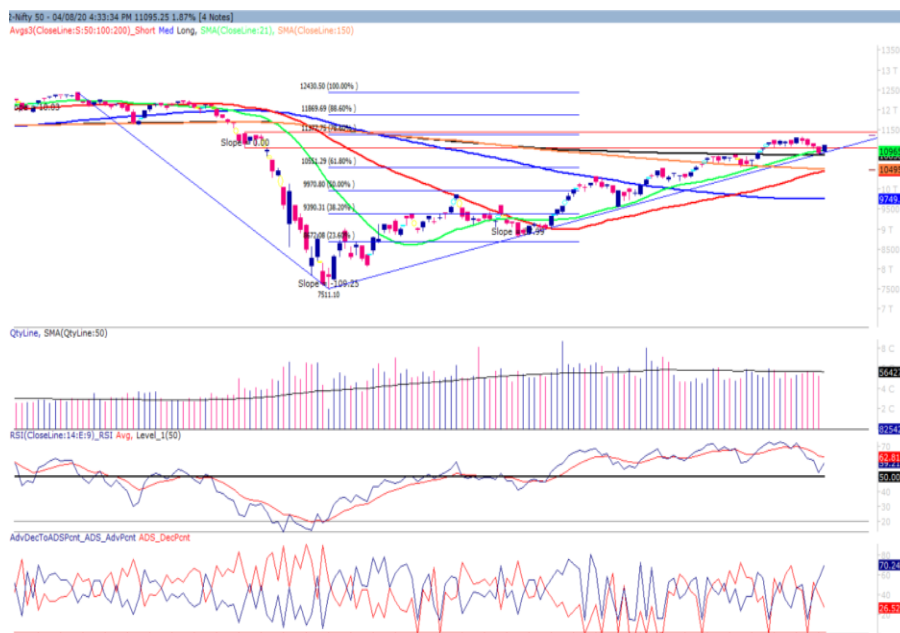
Wednesday, 05<sup>th</sup> Aug, 2020

Indian Indices	Last Price	(%) Chg
NSE	11102.85	1.94
BSE	37687.91	2.03
World Indices	Last Price	(%) Chg
Dow Jones	26828.47	0.62
Nasdaq	10941.17	0.35
Nikkei	22431.14	-0.63
Hang Seng	24956.11	0.04
FTSE	6036.00	0.05
Commodity	Last Price	(%) Chg
GOLD(\$/ounce)	2021.15	0.63
Silver (\$/Ounce)	26.10	0.10
Crude (\$/BBL)	44.41	-0.05
Aluminium spot (\$/mt)	1762.25	-0.28
Copper SPOT (\$/mt)	6448.75	-0.04
Lead Spot (\$/MT)	1885.00	0.04
Natural gas \$/MMBtu	2.18	0.09
Currency	Last Price	(%) Chg
USD-INR	75.28	-0.22
EUR-INR	88.57	0.12
Bond	Last Price	(%) Chg
India 10 Yr Bond yield	5.833	-0.07

52 Wk High (A group)			52 Wk Low (A group)		
Company	Close Price	52 Wk High	Company	Close Price	52 Wk Low
ALKEM	2895	2975	--	--	--
JUBILANT	834	909	--	--	--
MARKSAN	43.6	43.6	--	--	--
MCX	1823	1823	--	--	--
CADILA	402	405	--	--	--

Source: BSE

### Market Technical Outlook



Nifty opened higher and momentum on the upside intensified as the day progressed which led the indices to close in green. We still maintain our stance that prices are trading within the supply zone of 11036 to 11433 (shown in red in the above graph). Further we have seen that prices have taken support at the upward sloping trendline (shown in blue in the above graph) and formed a bull candle. This suggests that upside momentum is likely to continue. In coming trading session if prices trade above 11115 levels then it is likely to test 11200 – 11300 levels. On the downside, 10900 – 10800 levels may act as support for the day.

**We still maintain our stance that Nifty is trading within the supply zone of 11036– 11433. Hence cautiously positive approach should be adopted at current level as stock specific activity is likely to continue.**

### Foreign Institutional Investments (FII's) Activities

Name of Segment	Net Buyer/seller	Rs In Cr
Index Futures	Net Buy	1228.39
Stock Futures	Net Buy	505.36
<b>Net Future Position</b>	<b>Net Buy</b>	<b>1733.75</b>
Index Options	Net Buy	844.54
Stock Options	Net Buy	11.90
<b>Net Options Position</b>	<b>Net Buy</b>	<b>856.44</b>
FII In cash Segment	Net Buy	703.74
DII In cash Segment	Net Sell	-665.69
<b>Net Cash Position</b>	<b>Net Buy</b>	<b>38.05</b>

**Guru Call: From the expert's desk**

Company	Reco Date	Reco Price (Buy on dips)	High till date	Return%
Aditya Birla Capital	22-Nov-19	95.75	115.35	20.47%
Akzo Nobel	13-Jul-20	1853	1895	2.22%
Alkem	08-Jul-20	2427	2583	6.04%
Asian Paints Ltd.	30-Mar-17	1068.10	1916.70	79.45%
Avenue Supermarts Ltd.	31-Jul-17	898.55	2560.00	184.90%
Axis Bank Ltd.	10-Apr-18	519.30	827.75	59.40%
Bajaj Finance Ltd.	11-Oct-18	2271.00	4923.40	116.79%
Bajaj Finserv Ltd	1-Nov-16	3416.80	9950.00	191.21%
Bajaj Holdings And Investment Ltd	19-May-16	1499.10	3950.00	163.49%
Bajaj-Auto	12-Jun-20	2782.00	3149.00	11.65%
Bandhan Bank Ltd.	19-Dec-18	556.40	650.00	16.82%
Bharat Petroleum Corporation Ltd.	23-Oct-19	531.50	549.00	3.29%
Bhartiartel	04-May-20	532.00	612.00	13.07%
Britannia	12-June-20	3366.00	4010.00	16.05%
Cadila	03-Apr-20	274.00	384.00	28.65%
Century Textile and Industries Ltd	25-Nov-16	326.00	656.90	101.50%
Cipla Ltd	20-Mar-17	597.30	678.45	13.59%
Colgate Palmolive	16-Sep-19	1314.00	1642.60	25.01%
Crompto Greaves Consumer	11-Jun-20	225.00	254.00	11.42%
Dabur India	22-Oct-19	466.00	525.00	12.66%
DLF Ltd	10-Apr-19	194.30	265.90	36.85%
Emami Limited	26-Jun-19	290.35	357.70	23.20%
Fortis	14-Jul-20	127.00	139.00	8.63%
Galaxy Surface	01-Jul-20	1557.00	1665.00	6.49%
Goderj CP	16-Jun-20	634.00	721.00	12.07%
Godrej Industries Ltd.	12-Feb-18	550.70	657.60	19.41%
HDFC Asset Management Company Ltd.	19-Dec-18	1572.90	3844.00	144.39%
HDFC Bank Limited	10-Nov-16	639.00	1305.50	104.30%
HDFC Life Insurance Co Ltd	19-Jan-18	485.05	646.40	33.26%
Hindustan Unilever Ltd.	13-Nov-17	1290.70	2308.20	78.83%
Housing Development Finance Corp Ltd	19-Dec-17	1720.00	2499.90	45.34%
ICICI Bank Ltd.	6-Apr-18	278.65	552.20	98.17%
ICICI Lombard General Insurance	19-Sep-19	1154.90	1440.40	24.72%
ICICI Prudential Life Insurance Company Ltd.	28-Jun-18	375.80	537.30	42.97%
Indusindbnk	08-Jun-20	451.00	577.00	21.84%
Infosys Ltd.	17-Aug-17	487.60	847.00	73.71%
JK Cement	19-Jun-20	1378.00	1568.00	12.12%
JK Lakshmi Cement	03-Jul-20	276.00	305.00	9.1%
Kansai Nerolac Paints	16-Dec-19	529.85	551.00	3.99%
Kotak Mahindra Bank Ltd	10-Nov-16	822.10	1740.00	111.65%
Mahanagar Gas	15-Nov-19	1029.00	1246.20	21.11%
Mahindra & Mahindra Ltd.	5-Jun-17	709.25	993.00	40.01%
Manappuram Finance Ltd.	24-Apr-18	119.20	194.80	63.42%
Marico Ltd.	4-Apr-18	325.00	404.00	24.31%
Nam-India	25-Nov-18	377.00	452.90	20.13%
Nestle India Ltd.	27-Sep-18	9729.40	16835.15	73.03%
Oberoi Realty Ltd.	23-Nov-17	508.60	641.70	26.17%
Pfizer	22-Jul-2020	4150.00	4450.00	6.74%
Phoenix Mills Limited	7-Jul-19	655.15	979.00	49.43%
Pidilite Industries Limited	4-Oct-16	681.60	1661.00	143.69%
Reliance	22-Apr-20	1351.00	2198.00	38.54%
Rites Ltd.	19-Dec-18	226.96	331.00	45.84%

**Guru Call: From the expert's desk**

Company	Reco Date	Reco Price (Buy on dips)	High till date	Return%
SBI Card	16-Jul-20	719.00	798.00	9.90%
SBI Life	20-May-20	715.00	895.00	20.11%
Tata Chemicals Limited	24-Dec-19	296.89	339.70	14.42%
Tata Consultancy Services Ltd.	8-Jan-18	1344.60	2296.20	70.77%
Tata Consumer	29-Jun-17	149.15	408.00	173.55%
Trent Ltd.	19-Dec-18	348.40	794.00	127.90%
Ultratech Cement Ltd.	19-Dec-18	4084.60	4904.95	20.08%
Voltas Ltd.	27-Mar-18	613.90	741.00	20.70%
Whirlpool Of India Ltd.	7-Dec-16	872.25	2555.00	192.92%
Zee Entertainment	22-Nov-19	345.00	362.00	4.93%

**NIFTY 50 STOCKS BELOW 200SMA**

SCRIP NAME	SMA 200	CLOSING (04-08-2020)
ZEEL	215.86	143.35
LT	1111.3	924.25
ITC	208.77	193.65
SBIN	250.88	191.6
GRASIM	657.91	624.65
TATAMOTORS	129.38	111.45
HDFC	2029.62	1781.1
HINDALCO	164.15	162.35
BPCL	423.28	408.55
ICICIBANK	431.48	351
HDFCBANK	1111.85	1041.65
ASIANPAINT	1732.3	1713.95
IOC	104.66	86.95
AXISBANK	574.41	429.15
ONGC	99.68	76.1
TITAN	1086.65	1075.2
UPL	481.55	461.7
GAIL	107.13	93.15
INDUSINDBK	914.92	492.6
BAJFINANCE	3443.33	3235.6
ADANI PORTS	340.18	314.95
POWERGRID	178.97	178.25
KOTAKBANK	1467.13	1323.95
TECHM	668.98	652.65
NTPC	103.38	85.6
BAJAJFINSV	7312.11	6162
COALINDIA	165.7	128.75
INFRA TEL	216.43	191.35
--	--	--
--	--	--
--	--	--
--	--	--
--	--	--
--	--	--
--	--	--
--	--	--

**Weekly Expiry Most Active Nifty Call Option**

Symbol	Expiry Date	Strike Price	Highest Open Interest (OI)
NIFTY	06-Aug-2020	11200	2,996,625
NIFTY	06-Aug-2020	11300	2,844,975
NIFTY	06-Aug-2020	11100	2,352,975

**Weekly Expiry Most Active Nifty Put Option**

Symbol	Expiry Date	Strike Price	Highest Open Interest (OI)
NIFTY	06-Aug-2020	10900	2,899,425
NIFTY	06-Aug-2020	10800	2,726,925
NIFTY	06-Aug-2020	10700	2,262,675

**Securities in Ban For Trade Date 05-08-2020**

N/A

**Bulk Deals (BSE)**

Deal Date	Scrip Name	Client Name	Deal Type	Quantity	Price
4-Aug-20	AARTISURF	HARESH KUNVARJI CHHEDA HUF	B	40000	245.90
4-Aug-20	AARTISURF	CHANDRAKANT V GOGRI	B	50000	245.90
4-Aug-20	AARTISURF	HDFC TRUSTEE COMPANY LIMITED FUND	S	88000	245.90
4-Aug-20	AARTISURF	MULRAJCHANDULALGALA	B	57020	245.90
4-Aug-20	AARTISURF	JAYA CHANDRAKANT GOGRI	B	200000	245.90
4-Aug-20	AARTISURF	DSP MUTUAL FUND	S	77,984	245.90
4-Aug-20	AARTISURF	HDFC MUTUAL FUND A/C - HDFC MIDCAP OPPORTUNITIES FUND	S	144,056	245.90
4-Aug-20	AARTISURF	HDFC MUTUAL FUND A/C - HDFC HYBRID EQUITY FUND	S	223,735	245.90
4-Aug-20	GRNLAMIND	MADHURI MADHUSUDAN KELA	B	152,101	585.00
4-Aug-20	GRNLAMIND	WINRO COMMERCIAL INDIA LIMITED	B	275,000	585.00
4-Aug-20	GRNLAMIND	BLUE DAIMOND PROPERTIES PRIVATE LIMITED	B	1688000	585.00
4-Aug-20	GRNLAMIND	JWALAMUKHI INVESTMENT HOLDINGS	S	215344	585.00
4-Aug-20	GRNLAMIND	WESTBRIDGE CROSSOVER FUND LLC	S	1901342	585
4-Aug-20	WELCORP	ALTURA CAPITAL ADVISORS LLP	B	2400000	96.25
4-Aug-20	WELCORP	AUTHUM INVESTMENT & INFRASTRUCTURE LIMITED	S	2400000	96.25

**Bulk Deals (NSE)**

Deal Date	Scrip Name	Client Name	Deal Type	Quantity	Price
4-Aug-20	AARTISURF	DHIREN KISHORE SHAH	BUY	101000	245.39
4-Aug-20	AARTISURF	CHANDRAKANT VALLABHJI GOGRI	BUY	50000	245.40
4-Aug-20	AARTISURF	SMALLCAP WORLD FUND INC	SELL	59380	234.44
4-Aug-20	AARTISURF	HDFC MUTUAL FUND A/C HDFC MID-CAP OPPORTUNITIES FUND	SELL	237000	245.40

 Note- Executed on 04<sup>th</sup> Aug 2020. Bulk Deal Buy/Sell done by fund house is considered.

## Research Analyst Registration No.

INH000002764

## Contact

SMS: 'Arihant' to 56677

## Website

[www.arihantcapital.com](http://www.arihantcapital.com)

## mail Id

[arihant.research@arihantcapital.com](mailto:arihant.research@arihantcapital.com)

**Arihant is Forbes Asia's '200 Best under a \$Billion' Company  
'Best Emerging Commodities Broker' awarded by UTV Bloomberg**

**Disclaimer:** This document has been prepared by Arihant Capital Markets Limited (hereinafter called as Arihant) and its subsidiaries and associated companies. This document does not constitute an offer or solicitation for the purchase and sale of any financial instrument by Arihant. Receipt and review of this document constitutes your agreement not to circulate, redistribute, retransmit or disclose to others the contents, opinions, conclusion, or information contained herein. This document has been prepared and issued on the basis of publicly available information, internally developed data and other sources believed to be reliable. Whilst meticulous care has been taken to ensure that the facts stated are accurate and opinions given are fair and reasonable, neither the analyst nor any employee of our company is in any way is responsible for its contents and nor is its accuracy or completeness guaranteed. This document is prepared for assistance only and is not intended to be and must not alone be taken as the basis for an investment decision. All recipients of this material should before dealing and or transacting in any of the products referred to in this material make their own investigation, seek appropriate professional advice. The investments discussed in this material may not be suitable for all investors. The recipient alone shall be fully responsible/are liable for any decision taken on the basis of this material. Arihant Capital Markets Ltd (including its affiliates) or its officers, directors, personnel and employees, including persons involved in the preparation or issuance of this material may; (a) from time to time, have positions in, and buy or sell or (b) be engaged in any other transaction and earn brokerage or other compensation in the financial instruments/products discussed herein or act as advisor or lender/borrower in respect of such securities/financial instruments/products or have other potential conflict of interest with respect to any recommendation and related information and opinions. The said persons may have acted upon and/or in a manner contradictory with the information contained here and may have a position or be otherwise interested in the investment referred to in this document before its publication. The user of this report assumes the entire risk of any use made of this data/report. Arihant especially states that it has no financial liability, whatsoever, to the users of this report.

## Arihant Capital Markets Ltd

#1011 Solitaire Corporate Park Building No.10 1<sup>st</sup> Floor  
Andheri Ghatkopar Link Road Chakala Andheri (E) Mumbai-400093  
T. 022-42254800. Fax: 022-42254880  
[www.arihantcapital.com](http://www.arihantcapital.com)