

To join our research group on TELEGRAM, please click on the links - <https://bit.ly/37T17JR> and <https://bit.ly/2svtU7k>

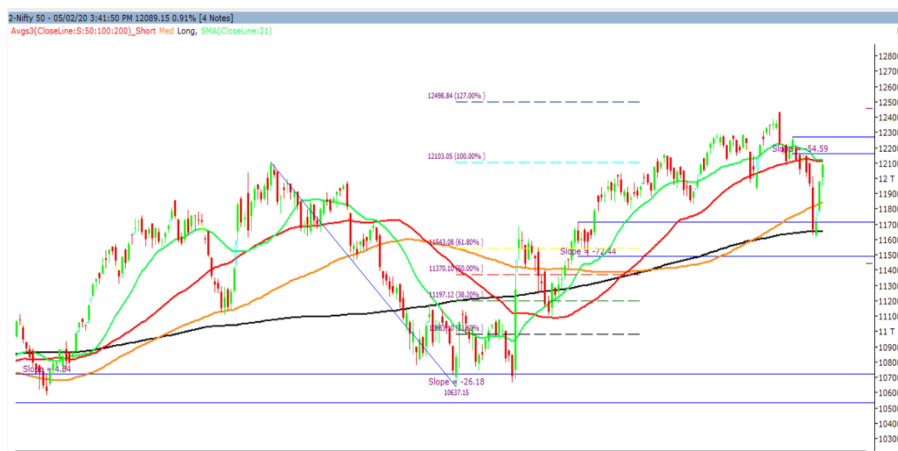
Thursday, 06th February, 2020

Indian Indices	Last Price	(%) Chg
BSE	41142.66	0.87
NSE	12090.25	0.94
World Indices		
Dow Jones	29290.85	1.68
Nasdaq	9508.68	0.43
Nikkei	23803.19	2.07
Hang Seng	27288.18	1.87
FTSE	7482.48	0.57
Commodity	Last Price	(%) Chg
GOLD(\$/ounce)	1558.90	-0.25
Silver (\$/Ounce)	17.64	0.19
Crude (\$/BBL)	55.97	1.25
Aluminium spot (\$/mt)	1726.75	0.16
Copper SPOT (\$/mt)	5779.00	1.00
Lead Spot (\$/MT)	1840.25	0.74
Natural gas \$/MMBtu	1.88	0.86
Currency	Last Price	(%) Chg
USD-INR	71.36	-0.11
EUR-INR	78.74	-0.45
Bond	Last Price	(%) Chg
India 10 Yr Bond yield	6.50	0.03

52 Wk High (A group)			52 Wk Low (A group)		
Company	Close Price	52 Wk High	Company	Close Price	52 Wk Low
ADANIEN	236	239	JKBANK	22.8	22.5
AEGIS	233	244	MARICO	311	299
BAJAJHLD	3868	3949	--	--	--
BALKISH	1100	1140	--	--	--
BATA	1875	1887	--	--	--

Source: BSE

Market Technical Outlook



Nifty opened higher traded with positive bias throughout the day to close in green. On the daily chart, we are observing three consecutive positive candles and prices have come closer to the 12117 (50-day SMA). Hence, 12117 is immediate resistance for Nifty. Any close above it would propel Nifty to test 12150 – 12200 levels. On the downside, 12040 – 11970 levels may act as support for the day. **We still maintain our stance that one needs to adopt cautious approach at current levels and wait for more confirmation of trend reversal.**

News for stocks

DMART	Avenue Supermarts' QIP opened on Feb. 5. The company is looking to raise Rs 4,098 crore from the issue of up to 2 crore shares at floor price of Rs. 1999.
ADANIGAS	Adani Gas aims to close the deal with French energy-major Total by March. The company is committed to expanding its city gas distribution business, which will get fillip once French energy major Total SA comes in as a partner.

Foreign Institutional Investments (FII's) Activities

Name of Segment	Net Buyer/seller	Rs In Cr
Index Futures	Net Sell	-320.31
Stock Futures	Net Buy	481.79
Net Future Position	Net Buy	161.48
Index Options	Net Buy	856.26
Stock Options	Net Buy	120.09
Net Options Position	Net Buy	976.35
FII In cash Segment	Net Buy	248.94
DII In cash Segment	Net Buy	262.75
Net Cash Position	Net Buy	511.69

Technical Levels for Nifty 50 Companies

Company	Closing 05-02-2020	Buy/Sell Trigger	Resistance 1	Resistance 2	Support 1	Support 2
ADANI PORTS	366.60	366.73	372.37	378.13	360.97	355.33
ASIAN PAINT	1873.50	1876.55	1886.95	1900.40	1863.10	1852.70
AXIS BANK	724.05	721.63	728.07	732.08	717.62	711.18
BAJAJ-AUTO	3161.50	3177.47	3204.93	3248.37	3134.03	3106.57
BAJAJ FINSV	9591.40	9577.70	9697.70	9804.00	9471.40	9351.40
BAJ FINANCE	4528.20	4515.27	4552.88	4577.57	4490.58	4452.97
BHARTIARTL	533.35	528.88	541.97	550.58	520.27	507.18
BPCL	501.70	495.88	513.77	525.83	483.82	465.93
BRITANNIA	3255.95	3272.55	3301.40	3346.85	3227.10	3198.25
CIPLA	447.55	448.07	458.63	469.72	436.98	426.42
COALINDIA	179.25	180.58	182.67	186.08	177.17	175.08
DRREDDY	3133.35	3168.35	3215.00	3296.65	3086.70	3040.05
EICHER MOT	19487.05	19547.72	19739.33	19991.62	19295.43	19103.82
GAIL	120.95	120.15	122.30	123.65	118.80	116.65
GRASIM	799.90	796.68	805.32	810.73	791.27	782.63
HCLTECH	595.60	593.37	600.73	605.87	588.23	580.87
HDFC	2391.65	2371.12	2416.03	2440.42	2346.73	2301.82
HDFC BANK	1244.65	1239.98	1252.67	1260.68	1231.97	1219.28
HEROMOTOCO	2373.25	2399.23	2452.92	2532.58	2319.57	2265.88
HINDALCO	196.30	194.05	199.80	203.30	190.55	184.80
HINDUNILVR	2160.30	2166.07	2178.23	2196.17	2148.13	2135.97
ICICIBANK	539.10	535.07	544.43	549.77	529.73	520.37
INDUSINDBK	1272.80	1275.55	1285.90	1299.00	1262.45	1252.10
INFRA TEL	246.05	245.68	251.37	256.68	240.37	234.68
INFY	784.55	781.65	788.90	793.25	777.30	770.05
IOC	114.70	114.82	115.73	116.77	113.78	112.87
ITC	216.45	215.15	218.80	221.15	212.80	209.15
JSWSTEEL	269.25	265.75	275.15	281.05	259.85	250.45
KOTAK BANK	1689.75	1691.43	1705.77	1721.78	1675.42	1661.08
LT	1310.05	1310.02	1325.03	1340.02	1295.03	1280.02
M&M	584.35	583.87	590.33	596.32	577.88	571.42
MARUTI	7040.90	7099.37	7173.13	7305.37	6967.13	6893.37
NESTLE IND	16384.85	16374.27	16492.48	16600.12	16266.63	16148.42
NTPC	111.20	111.43	112.37	113.53	110.27	109.33
ONGC	106.80	106.43	107.77	108.73	105.47	104.13
POWERGRID	189.35	191.02	194.03	198.72	186.33	183.32
RELIANCE	1448.50	1443.87	1457.43	1466.37	1434.93	1421.37
SBIN	311.00	309.75	314.90	318.80	305.85	300.70
SUN PHARMA	426.25	426.52	431.13	436.02	421.63	417.02
TATAMOTORS	183.75	178.43	190.27	196.78	171.92	160.08
TATA STEEL	475.05	467.58	487.17	499.28	455.47	435.88
TCS	2146.55	2135.85	2167.40	2188.25	2115.00	2083.45
TECHM	814.05	812.35	817.70	821.35	808.70	803.35
TITAN	1279.85	1277.52	1300.03	1320.22	1257.33	1234.82
ULTRACEMCO	4471.80	4466.00	4534.40	4597.00	4403.40	4335.00
UPL	537.45	533.77	545.98	554.52	525.23	513.02
VEDL	143.10	141.53	145.47	147.83	139.17	135.23
WIPRO	242.25	240.85	244.40	246.55	238.70	235.15
YES BANK	37.60	37.12	40.18	42.77	34.53	31.47
ZEEL	226.65	232.48	244.87	263.08	214.27	201.88

(Source – IRIS)

Guru Call: From the expert's desk

Company	Reco Date	Reco Price (Buy on dips)	High till date	Return%
Aditiya Birla Capital	22-Nov-19	95.75	115.35	20.47%
Asian Paints Ltd.	30-Mar-17	1068.1	1862.25	74.35%
Avenue Supermarts Ltd.	31-Jul-17	898.55	2010	123.69%
Axis Bank Ltd.	10-Apr-18	519.3	827.75	59.40%
Bajaj Finance Ltd.	11-Oct-18	2271	4295.75	89.16%
Bajaj Finserv Ltd	1-Nov-16	3416.8	9764.35	185.77%
Bajaj Holdings And Investment Ltd	19-May-16	1499.1	3903.95	160.42%
Bandhan Bank Ltd.	19-Dec-18	556.4	650	16.82%
Bharat Petroleum Corporation Ltd.	23-Oct-19	531.5	549	3.29%
Century Textile and Industries Ltd	25-Nov-16	326	634	94.48%
Cipla Ltd	20-Mar-17	597.3	678.45	13.59%
Colgate Palmolive	16-Sep-19	1314	1642.6	25.01%
Container Corporation	22-Nov-19	577	603	4.51%
Dabur India	22-Oct-19	466	501	7.51%
DLF Ltd	10-Apr-19	194.3	265.9	36.85%
Emami Limited	26-Jun-19	290.35	357.7	23.20%
Godrej Industries Ltd.	12-Feb-18	550.7	657.6	19.41%
Godrej Properties Ltd.	19-Dec-18	685.3	1119.6	63.37%
Grasim Industries Ltd.	31-May-17	1132.5	1331	17.53%
Havells India Ltd.	8-Dec-17	525.75	806.85	53.47%
Housing Development Finance Corp Ltd	19-Dec-17	1720	2499.9	45.34%
HDFC Asset Management Company Ltd.	19-Dec-18	1572.9	3844	144.39%
HDFC Bank Limited	10-Nov-16	639	1305.5	104.30%
HDFC Life Insurance Co Ltd	19-Jan-18	485.05	646.4	33.26%
Hindustan Unilever Ltd.	13-Nov-17	1290.7	2190	69.68%
ICICI Bank Ltd.	6-Apr-18	278.65	552.2	98.17%
ICICI Prudential Life Insurance Company Ltd.	28-Jun-18	375.8	537.3	42.97%
ICICI Lombard General Insurance	19-Sep-19	1154.9	1440.4	24.72%
Infosys Ltd.	17-Aug-17	487.6	847	73.71%
Kansai Nerolac Paints	16-Dec-19	529.85	551	3.99%
Kotak Mahindra Bank Ltd	10-Nov-16	822.1	1734.8	111.02%
Mahindra & Mahindra Ltd.	5-Jun-17	709.25	993	40.01%
Manappuram Finance Ltd.	24-Apr-18	119.2	189	58.56%
Mahanagar Gas	15-Nov-19	1029	1198	16.42%
Marico Ltd.	4-Apr-18	325	404	24.31%
Nestle India Ltd.	27-Sep-18	9729.4	15850	62.91%
Oberoi Realty Ltd.	23-Nov-17	508.6	641.7	26.17%
Phoenix Mills Limited	7-Jul-19	655.15	900	37.37%
Pidilite Industries Limited	4-Oct-16	681.6	1493.5	119.12%
Prestige Estates Projects Limited	6-Jun-19	286.7	426	48.59%
Reliance Nippon	25-Nov-18	377	386.4	2.49%
Rites Ltd.	19-Dec-18	226.96	324.8	43.11%
RBL Bank	22-Nov-19	334	391.2	17.13%
State Bank Of India	28-Aug-18	308	373.8	21.36%
Shipping Corporation	22-Nov-19	64	65.95	3.05%
Tata Chemicals Limited	24-Dec-19	682.8	762	11.60%
Tata Global Beverages Ltd.	29-Jun-17	149.15	399.45	167.82%
Tata Consultancy Services Ltd.	8-Jan-18	1344.6	2296.2	70.77%
Trent Ltd.	19-Dec-18	348.4	611.95	75.65%
Ultratech Cement Ltd.	19-Dec-18	4084.6	4904.95	20.08%
Voltas Ltd.	27-Mar-18	613.9	730.95	19.07%
Whirlpool Of India Ltd.	7-Dec-16	872.25	2510	187.76%
Zee Entertainment	22-Nov-19	345	362	4.93%

NIFTY 50 STOCKS BELOW 200SMA

SCRIP NAME	SMA 200	CLOSING (05-02-2020)
WIPRO	260.82	242.40
ZEEL	319.51	228.25
LT	1395.50	1310.05
ITC	259.50	216.05
SBIN	316.58	311.00
CIPLA	496.86	454.95
HINDALCO	196.58	196.30
HEROMOTOCO	2557.06	2374.00
IOC	138.57	114.70
AXISBANK	731.37	724.55
ONGC	141.08	106.80
VEDL	154.44	143.55
UPL	595.54	537.45
GAIL	138.32	121.25
EICHERMOT	19647.79	19486.80
INDUSINDBK	1436.46	1273.40
ADANIPTS	387.17	367.70
POWERGRID	196.47	189.35
TCS	2154.33	2147.25
NTPC	123.46	111.50
YESBANK	85.32	37.60
COALINDIA	214.98	179.80
INFRADEL	254.50	245.00

Bulk Deals (BSE)

Deal Date	Scrip Name	Client Name	Deal Type	Quantity	Price
5-Feb-20	WESTLIFE	KUWAIT INVESTMENT AUTHORITY FUND F239	B	896800	425.00
5-Feb-20	WESTLIFE	SUNDARAM MUTUAL FUND A/C - SUNDARAM MIDCAP FUND	B	1367100	425.00
5-Feb-20	WESTLIFE	MAKINO HOLDINGS LIMITED	S	4682533	425.07

Bulk Deals (NSE)

Deal Date	Scrip Name	Client Name	Deal Type	Quantity	Price
5-Feb-20	Spandana Sphoorty Fin Ltd	ALBERTA TEACHERS RETIREMENT FUND BOARD	BUY	1316135	1,012.72
5-Feb-20	Tourism Finance Corp	DOVETAIL INDIA FUND CLASS 6 SHARES	BUY	1072000	67.04
5-Feb-20	Tourism Finance Corp	ANJANA PROJECTS PRIVATE LIMITED	BUY	772000	67.03
5-Feb-20	Reliance Infrastructu Ltd	VANGUARD ENERGY FUND	SELL	1324894	19.95
5-Feb-20	Simplex Infrastructures L	MASTER TRST BK OF JAPAN AS TRSTEE OF NISSAY INDIA EQUITY SEL MTR FD	SELL	1653012	48.81
5-Feb-20	Simplex Infrastructures L	JINESH MATALIA	SELL	100000	49.25
5-Feb-20	Spandana Sphoorty Fin Ltd	JM FINANCIAL INDIA TRUST II	SELL	1600000	1,012.00
5-Feb-20	Tourism Finance Corp	REDKITE CAPITAL PRIVATE LIMITED	SELL	2000000	67.06

Note- Executed on 05th Feb 2020. Bulk Deal Buy/Sell done by fund house is considered.

Weekly Expiry Most Active Nifty Call Option

Symbol	Expiry Date	Strike Price	Highest Open Interest (OI)
NIFTY	06-Feb-20	12100	3536250
NIFTY	06-Feb-20	12200	2365050
NIFTY	06-Feb-20	12300	2081850

Weekly Expiry Most Active Nifty Put Option

Symbol	Expiry Date	Strike Price	Highest Open Interest (OI)
NIFTY	06-Feb-20	12000	3113475
NIFTY	06-Feb-20	11900	2534850
NIFTY	06-Feb-20	11800	2349225

Securities in Ban For Trade Date 06-02-2020

YESBANK

Research Analyst Registration No.

INH000002764

Contact

SMS: 'Arihant' to 56677

Website
www.arihantcapital.com
mail Id
arihant.research@arihantcapital.com

Arihant is Forbes Asia's '200 Best under a \$Billion' Company
'Best Emerging Commodities Broker' awarded by UTV Bloomberg

Disclaimer: This document has been prepared by Arihant Capital Markets Limited (hereinafter called as Arihant) and its subsidiaries and associated companies. This document does not constitute an offer or solicitation for the purchase and sale of any financial instrument by Arihant. Receipt and review of this document constitutes your agreement not to circulate, redistribute, retransmit or disclose to others the contents, opinions, conclusion, or information contained herein. This document has been prepared and issued on the basis of publicly available information, internally developed data and other sources believed to be reliable. Whilst meticulous care has been taken to ensure that the facts stated are accurate and opinions given are fair and reasonable, neither the analyst nor any employee of our company is in any way is responsible for its contents and nor is its accuracy or completeness guaranteed. This document is prepared for assistance only and is not intended to be and must not alone be taken as the basis for an investment decision. All recipients of this material should before dealing and or transacting in any of the products referred to in this material make their own investigation, seek appropriate professional advice. The investments discussed in this material may not be suitable for all investors. The recipient alone shall be fully responsible/are liable for any decision taken on the basis of this material. Arihant Capital Markets Ltd (including its affiliates) or its officers, directors, personnel and employees, including persons involved in the preparation or issuance of this material may; (a) from time to time, have positions in, and buy or sell or (b) be engaged in any other transaction and earn brokerage or other compensation in the financial instruments/products discussed herein or act as advisor or lender/borrower in respect of such securities/financial instruments/products or have other potential conflict of interest with respect to any recommendation and related information and opinions. The said persons may have acted upon and/or in a manner contradictory with the information contained here and may have a position or be otherwise interested in the investment referred to in this document before its publication. The user of this report assumes the entire risk of any use made of this data/report. Arihant especially states that it has no financial liability, whatsoever, to the users of this report.

Arihant Capital Markets Ltd

#1011 Solitaire Corporate Park Building No.10 1st Floor
 Andheri Ghatkopar Link Road Chakala Andheri (E) Mumbai-400093
 T. 022-42254800. Fax: 022-42254880
www.arihantcapital.com