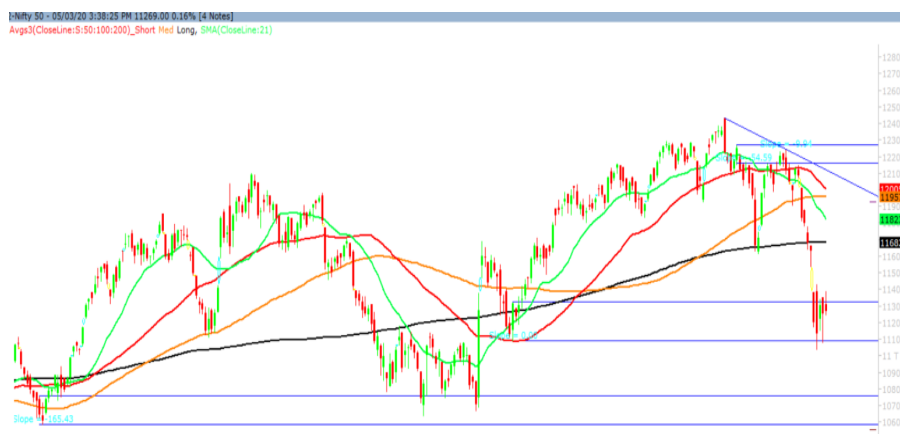


To join our research group on TELEGRAM, please click on the links - <https://bit.ly/37T17JR> and <https://bit.ly/2svtU7k>

Friday, 06th March, 2020

Indian Indices	Last Price	(%) Chg
BSE	38470.61	0.16
NSE	11269.00	0.16
World Indices		
Dow Jones	26121.28	-3.58
Nasdaq	8738.59	-3.10
Nikkei	20702.27	-2.94
Hang Seng	26226.19	-2.02
FTSE	6705.43	-1.62
Commodity	Last Price	(%) Chg
GOLD(\$/ounce)	1670.90	0.17
Silver (\$/Ounce)	17.34	-0.28
Crude (\$/BBL)	49.63	-0.72
Aluminium spot (\$/mt)	1714.00	-0.25
Copper SPOT (\$/mt)	5654.50	-0.31
Lead Spot (\$/MT)	1827.50	-0.27
Natural gas \$/MMBtu	1.74	-1.64
Currency	Last Price	(%) Chg
USD-INR	73.53	0.02
EUR-INR	82.11	0.17
Bond	Last Price	(%) Chg
India 10 Yr Bond yield	6.23	0.21

Market Technical Outlook



Nifty opened higher traded with choppiness in a narrow range throughout the day to close on a flat note. On the daily chart, we are observing for the fifth consecutive trading session prices have closed within the demand zone of 11090 to 11312. We maintain our stance that a pull-back rally from current level cannot be ruled out. In such scenario Nifty may test 11320– 11380 levels. On the downside, 11200 – 11160 levels may act as support for the day.

We maintain our stance that a bounce is in offing. Hence, cautiously positive approach at current level should be adopted.

News for stocks

YESBANK	Reserve Bank of India (RBI) superseded the board of Yes Bank and imposed a month-long moratorium. Depositors will be restricted to a maximum withdrawal of Rs 50,000 even if they have multiple accounts.
SBIN	SBI board has given in-principle approval to consider an “investment opportunity” in YES Bank. While the finer details of the deal are being worked out, it is anticipated that both SBI and LIC together will take a 51 per cent stake in the bank, with a one-year lock-in period.

Foreign Institutional Investments (FII's) Activities

Name of Segment	Net Buyer/seller	Rs In Cr
Index Futures	Net Sell	-341.73
Stock Futures	Net Buy	1038.23
Net Future Position	Net Buy	696.50
Index Options	Net Buy	2627.25
Stock Options	Net Buy	95.39
Net Options Position	Net Buy	2722.64
FII In cash Segment	Net Sell	-2476.75
DII In cash Segment	Net Buy	2510.89
Net Cash Position	Net Buy	34.14

52 Wk High (A group)			52 Wk Low (A group)		
Company	Close Price	52 Wk High	Company	Close Price	52 Wk Low
AJANTAP	1474	1543	CANBK	139	134
DABUR	517	525	CHENNPE	99	96
PIDILITE	1629	1644	DBCORP	109	108
--	--	--	DBL	293	291
--	--	--	EMAMI	244	243

Source: BSE

Technical Levels for Nifty 50 Companies

Company	Closing 05-03-2020	Buy/Sell Trigger	Resistance 1	Resistance 2	Support 1	Support 2
ADANIPTS	349.15	349.18	351.87	354.58	346.47	343.78
ASIANPAINT	1874.45	1869.52	1886.93	1899.42	1857.03	1839.62
AXISBANK	677.90	682.38	689.52	701.13	670.77	663.63
BAJAJ-AUTO	2703.65	2716.28	2736.37	2769.08	2683.57	2663.48
BAJAJFINSV	8879.90	8870.32	8979.58	9079.27	8770.63	8661.37
BAJFINANCE	4330.70	4323.80	4374.45	4418.20	4280.05	4229.40
BHARTIARTL	526.90	524.75	532.85	538.80	518.80	510.70
BPCL	418.40	421.53	426.02	433.63	413.92	409.43
BRITANNIA	3127.15	3122.75	3169.40	3211.65	3080.50	3033.85
CIPLA	440.60	450.02	462.58	484.57	428.03	415.47
COALINDIA	177.15	176.52	180.83	184.52	172.83	168.52
DRREDDY	3184.45	3194.20	3222.20	3259.95	3156.45	3128.45
EICHERMOT	17775.35	17608.38	18054.96	18334.58	17328.77	16882.18
GAIL	106.80	107.98	110.07	113.33	104.72	102.63
GRASIM	680.30	684.60	691.20	702.10	673.70	667.10
HCLTECH	576.40	573.82	584.48	592.57	565.73	555.07
HDFC	2195.05	2203.42	2223.83	2252.62	2174.63	2154.22
HDFCBANK	1151.35	1153.03	1163.32	1175.28	1141.07	1130.78
HERMOTOCO	2063.90	2069.77	2087.23	2110.57	2046.43	2028.97
HINDALCO	155.50	159.42	163.98	172.47	150.93	146.37
HINDUNILVR	2218.00	2219.50	2257.15	2296.30	2180.35	2142.70
ICICIBANK	504.50	505.22	510.43	516.37	499.28	494.07
INDUSINDBK	1075.00	1077.65	1092.30	1109.60	1060.35	1045.70
INFRADEL	214.70	216.68	221.77	228.83	209.62	204.53
INFY	754.60	759.97	768.18	781.77	746.38	738.17
IOC	104.80	105.88	107.32	109.83	103.37	101.93
ITC	188.05	188.60	190.65	193.25	186.00	183.95
JSWSTEEL	247.15	248.08	251.82	256.48	243.42	239.68
KOTAKBANK	1651.35	1645.28	1682.57	1713.78	1614.07	1576.78
LT	1182.45	1178.63	1191.07	1199.68	1170.02	1157.58
M&M	479.30	476.93	484.87	490.43	471.37	463.43
MARUTI	6365.95	6386.72	6443.23	6520.52	6309.43	6252.92
NESTLEIND	16576.30	16631.32	16780.13	16983.97	16427.48	16278.67
NTPC	107.85	108.18	109.32	110.78	106.72	105.58
ONGC	92.60	93.00	94.00	95.40	91.60	90.60
POWERGRID	195.95	196.68	198.82	201.68	193.82	191.68
RELIANCE	1311.15	1325.03	1344.07	1376.98	1292.12	1273.08
SBIN	288.50	285.63	301.27	314.03	272.87	257.23
SUNPHARMA	404.90	407.15	412.55	420.20	399.50	394.10
TATAMOTORS	125.75	126.38	128.52	131.28	123.62	121.48
TATASTEEL	375.75	379.28	384.27	392.78	370.77	365.78
TCS	2125.05	2118.95	2153.85	2182.65	2090.15	2055.25
TECHM	756.10	764.15	775.95	795.80	744.30	732.50
TITAN	1259.15	1255.50	1268.80	1278.45	1245.85	1232.55
ULTRACEMCO	4205.55	4195.72	4239.83	4274.12	4161.43	4117.32
UPL	516.05	519.35	525.70	535.35	509.70	503.35
VEDL	117.10	118.43	120.87	124.63	114.67	112.23
WIPRO	229.70	230.75	232.85	236.00	227.60	225.50
YESBANK	36.80	34.22	40.43	44.07	30.58	24.37
ZEEL	238.15	242.68	249.72	261.28	231.12	224.08

(Source – IRIS)

Guru Call: From the expert's desk

Company	Reco Date	Reco Price (Buy on dips)	High till date	Return%
Aditya Birla Capital	22-Nov-19	95.75	115.35	20.47%
Asian Paints Ltd.	30-Mar-17	1068.10	1916.70	79.45%
Avenue Supermarts Ltd.	31-Jul-17	898.55	2560.00	184.90%
Axis Bank Ltd.	10-Apr-18	519.30	827.75	59.40%
Bajaj Finance Ltd.	11-Oct-18	2271.00	4923.40	116.79%
Bajaj Finserv Ltd	1-Nov-16	3416.80	9950.00	191.21%
Bajaj Holdings And Investment Ltd	19-May-16	1499.10	3950.00	163.49%
Bandhan Bank Ltd.	19-Dec-18	556.40	650.00	16.82%
Bharat Petroleum Corporation Ltd.	23-Oct-19	531.50	549.00	3.29%
Century Textile and Industries Ltd	25-Nov-16	326.00	656.90	101.50%
Cipla Ltd	20-Mar-17	597.30	678.45	13.59%
Colgate Palmolive	16-Sep-19	1314.00	1642.60	25.01%
Container Corporation	22-Nov-19	577.00	603.00	4.51%
Dabur India	22-Oct-19	466.00	523.25	12.29%
DLF Ltd	10-Apr-19	194.30	265.90	36.85%
Emami Limited	26-Jun-19	290.35	357.70	23.20%
Godrej Industries Ltd.	12-Feb-18	550.70	657.60	19.41%
Godrej Properties Ltd.	19-Dec-18	685.30	1189.25	73.54%
Grasim Industries Ltd.	31-May-17	1132.50	1331.00	17.53%
Havells India Ltd.	8-Dec-17	525.75	806.85	53.47%
Housing Development Finance Corp Ltd	19-Dec-17	1720.00	2499.90	45.34%
HDFC Asset Management Company Ltd.	19-Dec-18	1572.90	3844.00	144.39%
HDFC Bank Limited	10-Nov-16	639.00	1305.50	104.30%
HDFC Life Insurance Co Ltd	19-Jan-18	485.05	646.40	33.26%
Hindustan Unilever Ltd.	13-Nov-17	1290.70	2308.20	78.83%
ICICI Bank Ltd.	6-Apr-18	278.65	552.20	98.17%
ICICI Prudential Life Insurance Company Ltd.	28-Jun-18	375.80	537.30	42.97%
ICICI Lombard General Insurance	19-Sep-19	1154.90	1440.40	24.72%
Infosys Ltd.	17-Aug-17	487.60	847.00	73.71%
Kansai Nerolac Paints	16-Dec-19	529.85	551.00	3.99%
Kotak Mahindra Bank Ltd	10-Nov-16	822.10	1740.00	111.65%
Mahindra & Mahindra Ltd.	5-Jun-17	709.25	993.00	40.01%
Manappuram Finance Ltd.	24-Apr-18	119.20	194.80	63.42%
Mahanagar Gas	15-Nov-19	1029.00	1246.20	21.11%
Marico Ltd.	4-Apr-18	325.00	404.00	24.31%
Nestle India Ltd.	27-Sep-18	9729.40	16831.50	73.00%
Oberoi Realty Ltd.	23-Nov-17	508.60	641.70	26.17%
Phoenix Mills Limited	7-Jul-19	655.15	913.85	39.49%
Pidilite Industries Limited	4-Oct-16	681.60	1607.00	135.77%
Prestige Estates Projects Limited	6-Jun-19	286.70	426.00	48.59%
Nam-India	25-Nov-18	377.00	452.90	20.13%
Rites Ltd.	19-Dec-18	226.96	331.00	45.84%
RBL Bank	22-Nov-19	334.00	391.20	17.13%
State Bank Of India	28-Aug-18	308.00	373.80	21.36%
Shipping Corporation	22-Nov-19	64.00	65.95	3.05%
Tata Chemicals Limited	24-Dec-19	682.80	779.80	14.21%
Tata Global Beverages Ltd.	29-Jun-17	149.15	408.00	173.55%
Tata Consultancy Services Ltd.	8-Jan-18	1344.60	2296.20	70.77%
Trent Ltd.	19-Dec-18	348.40	794.00	127.90%
Ultratech Cement Ltd.	19-Dec-18	4084.60	4904.95	20.08%
Voltas Ltd.	27-Mar-18	613.90	741.00	20.70%
Whirlpool Of India Ltd.	7-Dec-16	872.25	2555.00	192.92%
Zee Entertainment	22-Nov-19	345.00	362.00	4.93%

NIFTY 50 STOCKS BELOW 200SMA

SCRIP NAME	SMA 200	CLOSING (05-03-2020)
WIPRO	255.67	229.70
RELIANCE	1378.80	1311.15
ZEEL	305.16	238.15
LT	1385.23	1182.45
ITC	249.69	188.05
TATASTEEL	425.20	375.75
SBIN	317.09	288.50
GRASIM	783.94	680.30
TATAMOTORS	155.82	125.75
CIPLA	484.30	440.60
M&M	566.74	479.30
HDFC	2227.07	2195.05
HINDALCO	194.43	155.50
BPCL	435.86	418.40
HDFCBANK	1211.38	1151.35
HEROMOTOCO	2522.37	2063.90
SUNPHARMA	418.79	404.90
IOC	134.50	104.80
AXISBANK	729.21	677.90
ONGC	134.47	92.60
VEDL	151.00	117.10
UPL	587.73	516.05
GAIL	132.75	106.80
EICHERMOT	19447.33	17775.35
INDUSINDBK	1396.66	1075.00
ADANIPTS	385.14	349.15
POWERGRID	196.34	195.95
ULTRACEMCO	4309.08	4205.55
TCS	2151.89	2125.05
JSWSTEEL	251.94	247.15
NTPC	121.37	107.85
MARUTI	6738.43	6365.95
YESBANK	69.35	36.80
BAJAJ-AUTO	2974.94	2703.65
COALINDIA	207.80	177.15
INFRATEL	249.43	214.70

Weekly Expiry Most Active Nifty Call Option

Symbol	Expiry Date	Strike Price	Highest Open Interest (OI)
NIFTY	12-Mar-2020	11400	953025
NIFTY	12-Mar-2020	11500	918975
NIFTY	12-Mar-2020	11600	895425

Weekly Expiry Most Active Nifty Put Option

Symbol	Expiry Date	Strike Price	Highest Open Interest (OI)
NIFTY	12-Mar-2020	11000	909450
NIFTY	12-Mar-2020	10800	596250
NIFTY	12-Mar-2020	11200	592275

Securities in Ban For Trade Date 06-03-2020

YESBANK

Bulk Deals (BSE)

Deal Date	Scrip Name	Client Name	Deal Type	Quantity	Price
5-Mar-20	BESTAGRO	SUKRITI GARG	B	62588	234.91
5-Mar-20	BESTAGRO	NAND KISHORE GARG	S	40000	233.00
5-Mar-20	BESTAGRO	SUKRITI GARG	S	260000	233.00
5-Mar-20	BESTAGRO	RESONANCE OPPORTUNITIES FUND	B	300000	233.00
5-Mar-20	JUBILANT	EAST BRIDGE CAPITAL MASTER FUND LIMITED	B	2405583	497.60
5-Mar-20	JUBILANT	MORGAN STANLEY ASIA (SINGAPORE) PTE.	S	1,626,012	495.75
5-Mar-20	NBVENTURES	EAST BRIDGE CAPITAL MASTER FUND LIMITED	B	4,235,574	65.15
5-Mar-20	NBVENTURES	MORGAN STANLEY ASIA (SINGAPORE) PTE.	S	4,221,805	65.15

Bulk Deals (NSE)

Deal Date	Scrip Name	Client Name	Deal Type	Quantity	Price
5-Mar-20	Sanco Industries Ltd.	RESOURCE OPZIONE CONSULTANCY PRIVATE LIMITED	BUY	30000	11.00
5-Mar-20	Sanco Industries Ltd.	RESOURCE OPZIONE CONSULTANCY PRIVATE LIMITED	SELL	76000	10.80

Note- Executed on 05th Mar 2020. Bulk Deal Buy/Sell done by fund house is considered.

Research Analyst Registration No.	Contact	Website	mail Id
INH000002764	SMS: 'Arihant' to 56677	www.arihantcapital.com	arihant.research@arihantcapital.com

**Arihant is Forbes Asia's '200 Best under a \$Billion' Company
'Best Emerging Commodities Broker' awarded by UTV Bloomberg**

Disclaimer: This document has been prepared by Arihant Capital Markets Limited (hereinafter called as Arihant) and its subsidiaries and associated companies. This document does not constitute an offer or solicitation for the purchase and sale of any financial instrument by Arihant. Receipt and review of this document constitutes your agreement not to circulate, redistribute, retransmit or disclose to others the contents, opinions, conclusion, or information contained herein. This document has been prepared and issued on the basis of publicly available information, internally developed data and other sources believed to be reliable. Whilst meticulous care has been taken to ensure that the facts stated are accurate and opinions given are fair and reasonable, neither the analyst nor any employee of our company is in any way is responsible for its contents and nor is its accuracy or completeness guaranteed. This document is prepared for assistance only and is not intended to be and must not alone be taken as the basis for an investment decision. All recipients of this material should before dealing and or transacting in any of the products referred to in this material make their own investigation, seek appropriate professional advice. The investments discussed in this material may not be suitable for all investors. The recipient alone shall be fully responsible/are liable for any decision taken on the basis of this material. Arihant Capital Markets Ltd (including its affiliates) or its officers, directors, personnel and employees, including persons involved in the preparation or issuance of this material may; (a) from time to time, have positions in, and buy or sell or (b) be engaged in any other transaction and earn brokerage or other compensation in the financial instruments/products discussed herein or act as advisor or lender/borrower in respect of such securities/financial instruments/products or have other potential conflict of interest with respect to any recommendation and related information and opinions. The said persons may have acted upon and/or in a manner contradictory with the information contained here and may have a position or be otherwise interested in the investment referred to in this document before its publication. The user of this report assumes the entire risk of any use made of this data/report. Arihant especially states that it has no financial liability, whatsoever, to the users of this report.

Arihant Capital Markets Ltd

#1011 Solitaire Corporate Park Building No.10 1st Floor
 Andheri Ghatkopar Link Road Chakala Andheri (E) Mumbai-400093
 T. 022-42254800. Fax: 022-42254880
www.arihantcapital.com