

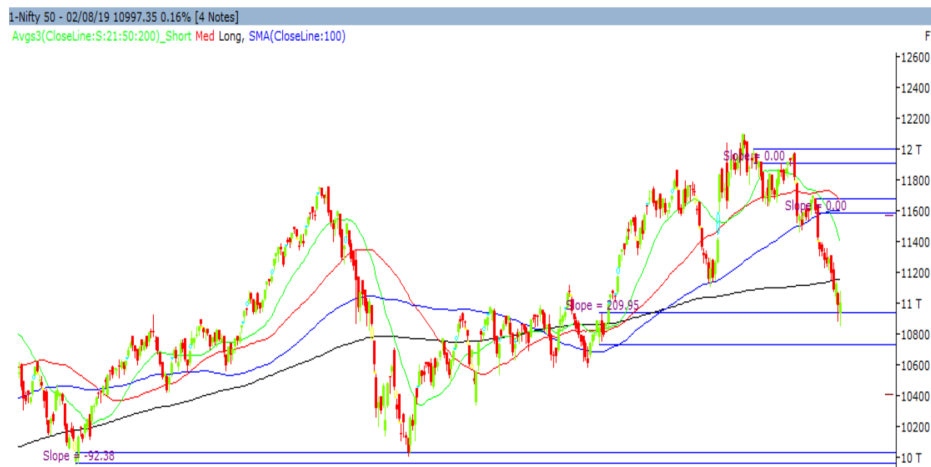
Tuesday, 06th August, 2019

Indian Indices	Last Price	(%) Chg
BSE	36699.84	-1.13
NSE	10862.60	-1.23
World Indices	Last Price	(%) Chg
Dow Jones	25717.74	-2.90
Nasdaq	7726.04	-3.47
Nikkei	20299.69	-2.03
Hang Seng	25575.77	-2.25
FTSE	7223.85	-2.47
Commodity	Last Price	(%) Chg
GOLD(\$/ounce)	1479.20	0.18
Silver (\$/Ounce)	16.50	0.62
Crude (\$/BBL)	60.25	0.44
Aluminium spot (\$/mt)	1769.50	0.21
Copper SPOT (\$/mt)	5694.25	0.16
Lead Spot (\$/MT)	1970.25	0.50
Natural gas \$/MMBtu	2.09	1.11
Currency	Last Price	(%) Chg
USD-INR	70.93	1.75
EUR-INR	79.35	2.29
Bond	Last Price	(%) Chg
India 10 Yr Bond yield	6.39	0.65

52 Wk High (A group)			52 Wk Low (A group)		
Company	Close Price	52 Wk High	Company	Close Price	52 Wk Low
ASIANPAI	1527	1550	AUROPH	548	537
--	--	--	BALKRISIN	691	690
--	--	--	BANKINDI	68.9	66.0
--	--	--	BLUEDAR	2347	2265
--	--	--	CASTROL	114	113

Source: BSE

Market Technical Outlook



Nifty opened lower in wake of weak global and domestic clues but recovered some of its losses to close in red. On the daily chart, we are observing that prices are within demand zone of 10729 to 10939 levels and have formed a candle which resembles a hammer. Hence a pullback rally cannot be ruled out. **We still maintain our stance that nifty is in a lower top lower bottom formation and pullback rally is likely to witness selling pressure at higher levels.**

Outlook: In coming trading session if Nifty opens lower in the range of 10848 - 10818 levels one can keep a stop loss of 10770 for a target of 10915 - 10948 - 10986 levels.

News for stocks under our Fundamental coverage

TATA MOTOR	ICRA cut company's long-term debt rating to AA- from AA
YES BANK	Moody's Investors Service extended its review for downgrade of the bank's 'Ba1' long-term foreign-currency issuer rating.

Foreign Institutional Investments (FII's) Activities

Name of Segment	Net Buyer/seller	Rs In Cr
Index Futures	Net Sell	-1155.55
Stock Futures	Net Buy	1221.96
Net Future Position	Net Buy	66.41
Index Options	Net Buy	607.52
Stock Options	Net Sell	-91.82
Net Options Position	Net Buy	515.70
FII In cash Segment	Net Sell	-2016.73
DII In cash Segment	Net Buy	1871.27
Net Cash Position	Net Sell	-145.46

Technical Levels for Nifty 50 Companies

Company	Closing 05-08-2019	Buy/Sell Trigger	Resistance 1	Resistance 2	Support 1	Support 2
ADANIPTS	368	366	374	379	361	353
ASIANPAINT	1525	1533	1544	1562	1514	1503
AXISBANK	662	661	671	680	652	642
BAJAJ-AUTO	2620	2603	2660	2700	2563	2505
BAJAJFINSV	6987	6988	7034	7081	6941	6895
BAJFINANCE	3160	3168	3192	3224	3135	3111
BHARTIARTL	358	353	367	375	344	330
BPCL	339	339	346	353	332	325
CIPLA	2578	2573	2603	2627	2548	2519
COALINDIA	519	517	522	526	514	509
DRREDDY	201	199	205	209	195	189
EICHERMOT	2515	2518	2535	2555	2498	2481
GAIL	16504	16572	16804	17104	16272	16040
GRASIM	123	124	125	128	122	120
HCLTECH	749	756	766	783	740	730
HDFC	1011	1008	1020	1028	1000	989
HDFCBANK	2152	2140	2172	2192	2120	2088
HEROMOTOCO	2179	2181	2199	2218	2161	2143
HINDALCO	2399	2393	2441	2482	2352	2304
HINDPETRO	176	175	179	182	172	169
HINDUNILVR	1741	1734	1761	1780	1715	1688
IBULHSGFIN	477	474	491	506	460	443
ICICIBANK	403	402	408	413	397	391
INDUSINDBK	1388	1381	1412	1436	1357	1326
INFRADEL	245	246	250	255	241	237
INFY	777	777	786	794	768	760
IOC	132	133	134	136	131	129
ITC	260	261	264	268	257	254
JSWSTEEL	218	217	222	226	213	208
KOTAKBANK	1460	1470	1485	1510	1445	1430
LT	1346	1343	1361	1377	1328	1309
M&M	545	547	552	559	540	535
MARUTI	5670	5606	5760	5849	5517	5363
NTPC	121	122	123	125	120	119
ONGC	131	131	133	134	130	129
POWERGRID	201	203	208	216	195	190
RELIANCE	1143	1146	1164	1185	1125	1107
SBIN	300	298	305	309	294	287
SUNPHARMA	417	417	424	430	411	405
TATAMOTORS	124	125	127	131	121	119
TATASTEEL	399	398	406	412	391	383
TCS	2249	2232	2269	2289	2212	2176
TECHM	648	641	658	667	632	616
TITAN	1037	1041	1055	1074	1022	1008
ULTRACEMCO	4246	4249	4313	4381	4182	4118
UPL	541	548	561	582	528	515
VEDL	141	139	144	148	136	131
WIPRO	262	263	265	268	260	257
YESBANK	81	83	86	91	78	74
ZEEL	331	333	340	349	324	316

(Source – IRIS)

Guru Call: From the expert's desk

Company	Reco Date	Reco Price (Buy on dips)	High till date	Return%
Asian Paints Ltd.	30-Mar-17	1068.1	1529	43.15%
Avenue Supermarts Ltd.	31-Jul-17	898.55	1699	89.08%
Axis Bank Ltd.	10-Apr-18	519.3	827.75	59.40%
Bajaj Finance Ltd.	11-Oct-18	2271	3693.25	62.63%
Bajaj Finserv Ltd	1-Nov-16	3416.8	8557.85	150.46%
Bajaj Holdings And Investment Ltd	19-May-16	1499.1	3800	153.49%
Bandhan Bank Ltd.	19-Dec-18	556.4	636	14.31%
Century Textile and Industries Ltd	25-Nov-16	739.3	1471	98.97%
Cipla Ltd	20-Mar-17	597.3	678.5	13.59%
DLF Ltd	10-Apr-18	194.3	202.65	4.30%
Emami Limited	26-Jun-19	290.35	326	12.28%
Godrej Industries Ltd.	12-Feb-18	550.7	657.6	19.41%
Godrej Properties Ltd.	19-Dec-18	685.3	1014.8	48.08%
Grasim Industries Ltd.	31-May-17	1132.5	1331	17.53%
Havells India Ltd.	8-Dec-17	525.75	806.85	53.47%
Housing Development Finance Corp Ltd	19-Dec-17	1720	2235	29.94%
HDFC Asset Management Company Ltd.	19-Dec-18	1572.9	2070	31.60%
HDFC Bank Limited	10-Nov-16	1251.3	2494.5	99.35%
HDFC Life Insurance Co Ltd	19-Jan-18	485.05	548.3	13.04%
Hindustan Unilever Ltd.	13-Nov-17	1290.7	1870	44.88%
ICICI Bank Ltd.	6-Apr-18	278.65	443.9	59.30%
ICICI Prudential Life Insurance Company Ltd.	28-Jun-18	375.8	428	13.89%
Infosys Ltd.	17-Aug-17	487.6	773	58.53%
Kotak Mahindra Bank Ltd	10-Nov-16	822.1	1555	89.15%
Mahindra & Mahindra Ltd.	5-Jun-17	709.25	993	40.01%
Manappuram Finance Ltd.	24-Apr-18	119.2	144.95	21.60%
Marico Ltd.	4-Apr-18	325	396.6	22.03%
Nestle India Ltd.	27-Sep-18	9729.4	11950	22.82%
Oberoi Realty Ltd.	23-Nov-17	508.6	621.7	22.24%
Phoenix Mills Limited	7-July-19	655.15	660	0.07%
Pidilite Industries Limited	4-Oct-16	681.6	1313	92.63%
Prestige Estates Projects Limited	6-Jun-18	286.7	283.5	-1.12%
Rites Ltd.	19-Dec-18	283.7	301.4	6.24%
State Bank Of India	28-Aug-18	308	365	18.51%
Tata Global Beverages Ltd.	29-Jun-17	149.15	328.8	120.45%
Tata Consultancy Services Ltd.	8-Jan-18	1344.6	2292	70.46%
Trent Ltd.	19-Dec-18	348.4	449.05	28.89%
Ultratech Cement Ltd.	19-Dec-18	4084.6	4904	20.06%
Voltas Ltd.	27-Mar-18	613.9	658.4	7.25%
Whirlpool Of India Ltd.	7-Dec-16	872.25	1955	124.13%

NIFTY 50 STOCKS BELOW 200SMA

SCRIP NAME	SMA 200	CLOSING (05-08-2019)
WIPRO	266.12	262.00
RELIANCE	1232.42	1143.35
ZEEL	412.38	330.95
LT	1386.66	1345.80
ITC	283.92	259.80
HCLTECH	1034.48	1011.10
TATASTEEL	505.97	399.25
SBIN	306.76	300.25
DRREDDY	2645.60	2514.70
GRASIM	838.47	749.45
TATAMOTORS	176.39	123.75
CIPLA	543.08	518.90
M&M	682.35	545.45
HINDALCO	207.73	175.75
BPCL	352.22	339.00
HDFCBANK	2206.23	2179.25
HEROMOTOCO	2746.57	2399.25
SUNPHARMA	449.45	417.15
BRITANNIA	2947.05	2578.35
IOC	145.45	132.25
AXISBANK	703.56	662.45
ONGC	154.03	131.30
TITAN	1053.25	1036.80
VEDL	180.53	140.70
UPL	571.37	540.95
GAIL	166.92	122.95
EICHERMOT	20854.38	16504.00
INDUSINDBK	1544.66	1388.20
ADANIPTS	372.74	367.85
TECHM	738.35	648.05
JSWSTEEL	290.32	217.70
NTPC	127.24	121.00
MARUTI	6903.47	5670.35
YESBANK	181.24	81.10
BAJAJ-AUTO	2801.67	2619.75
COALINDIA	242.20	200.60
INFRATEL	278.90	245.35
IBULHSGFIN	729.15	476.75

Securities in Ban For Trade Date 06-08-2019

NIL.

Bulk Deals (NSE)

Deal Date	Scrip Name	Client Name	Deal Type	Quantity	Price
5-Aug-19	Ind Terrain Fashions Ltd	LIMIAR FUND (MASTER) LP	SELL	555729	77.40

Bulk Deals (BSE)

Deal Date	Scrip Name	Client Name	Deal Type	Quantity	Price
5-Aug-19	GFLLIMITED	VALLABH ROOPCHAND BHANSALI	B	1384580	850.00
5-Aug-19	GFLLIMITED	MEENU MANGAL BHANSHALI	B	5369574	850.00
5-Aug-19	GFLLIMITED	SURAJ VALLABH BHANSHALI	S	582380	850.00
5-Aug-19	GFLLIMITED	BHANSHALI VALLABH HUF	S	802200	850.00
5-Aug-19	GFLLIMITED	LATA MANEK BHANSHALI	S	1044907	850.00
5-Aug-19	GFLLIMITED	AADI FINANCIAL ADVISORS LLP	S	1,255,468	850.00
5-Aug-19	GFLLIMITED	BHANSHALI MANEK	S	1,354,943	850.00
5-Aug-19	INDTERRAIN	LIMIAR FUND (MASTER) LP	S	191,409	77.45

Note- Executed on 05th Aug 2019. Bulk Deal Buy/Sell done by fund house is considered.

Research Analyst Registration No.

INH000002764

Contact

SMS: 'Arihant' to 56677

Website
www.arihantcapital.com
mail Id
research@arihantcapital.com

Arihant is Forbes Asia's '200 Best under a \$Billion' Company
'Best Emerging Commodities Broker' awarded by UTV Bloomberg

Disclaimer: This document has been prepared by Arihant Capital Markets Limited (hereinafter called as Arihant) and its subsidiaries and associated companies. This document does not constitute an offer or solicitation for the purchase and sale of any financial instrument by Arihant. Receipt and review of this document constitutes your agreement not to circulate, redistribute, retransmit or disclose to others the contents, opinions, conclusion, or information contained herein. This document has been prepared and issued on the basis of publicly available information, internally developed data and other sources believed to be reliable. Whilst meticulous care has been taken to ensure that the facts stated are accurate and opinions given are fair and reasonable, neither the analyst nor any employee of our company is in any way is responsible for its contents and nor is its accuracy or completeness guaranteed. This document is prepared for assistance only and is not intended to be and must not alone be taken as the basis for an investment decision. All recipients of this material should before dealing and or transacting in any of the products referred to in this material make their own investigation, seek appropriate professional advice. The investments discussed in this material may not be suitable for all investors. The recipient alone shall be fully responsible/are liable for any decision taken on the basis of this material. Arihant Capital Markets Ltd (including its affiliates) or its officers, directors, personnel and employees, including persons involved in the preparation or issuance of this material may; (a) from time to time, have positions in, and buy or sell or (b) be engaged in any other transaction and earn brokerage or other compensation in the financial instruments/products discussed herein or act as advisor or lender/borrower in respect of such securities/financial instruments/products or have other potential conflict of interest with respect to any recommendation and related information and opinions. The said persons may have acted upon and/or in a manner contradictory with the information contained here and may have a position or be otherwise interested in the investment referred to in this document before its publication. The user of this report assumes the entire risk of any use made of this data/report. Arihant especially states that it has no financial liability, whatsoever, to the users of this report.

Arihant Capital Markets Ltd

#1011 Solitaire Corporate Park Building No.10 1st Floor
 Andheri Ghatkopar Link Road Chakala Andheri (E) Mumbai-400093
 T. 022-42254800. Fax: 022-42254880
www.arihantcapital.com