

To join our research group on TELEGRAM, please click on the links - <https://bit.ly/37T17JR> and <https://bit.ly/2svtU7k>

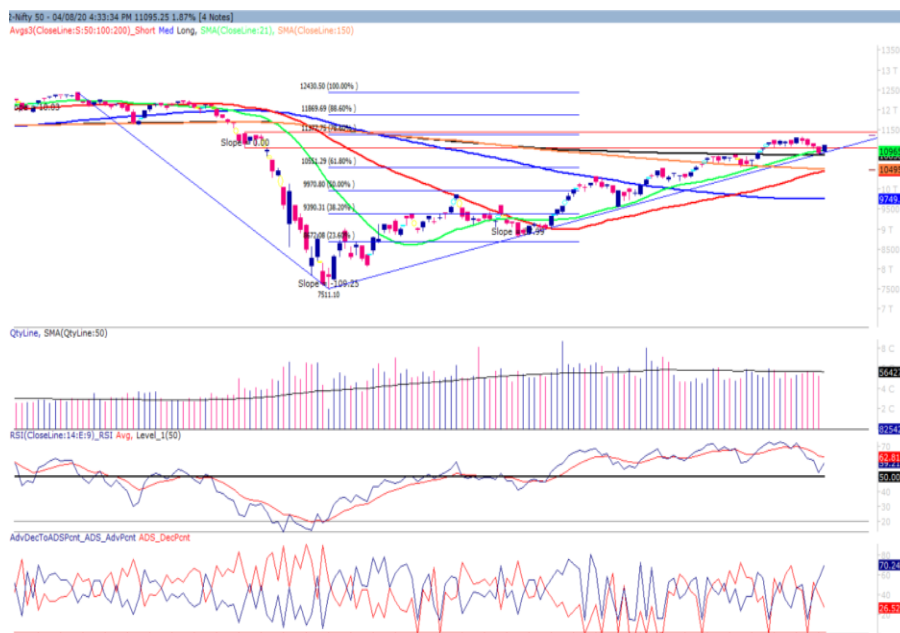
Thursday, 06th Aug, 2020

Indian Indices	Last Price	(%) Chg
NSE	11,101.65	0.06
BSE	37663.33	-0.07
World Indices	Last Price	(%) Chg
Dow Jones	27201.52	1.39
Nasdaq	10,998.40	0.52
Nikkei	22440.69	-0.33
Hang Seng	24676.17	-1.70
FTSE	6104.72	1.14
Commodity	Last Price	(%) Chg
GOLD(\$/ounce)	2052.90	0.18
Silver (\$/Ounce)	27.04	0.58
Crude (\$/BBL)	45.27	0.22
Aluminium spot (\$/mt)	1761.00	0.09
Copper SPOT (\$/mt)	6467.25	-0.32
Lead Spot (\$/MT)	1924.75	0.37
Natural gas \$/MMBtu	2.22	1.32
Currency	Last Price	(%) Chg
USD-INR	75.01	-0.36
EUR-INR	88.83	0.32
Bond	Last Price	(%) Chg
India 10 Yr Bond yield	5.82	-0.10

52 Wk High (A group)			52 Wk Low (A group)		
Company	Close Price	52 Wk High	Company	Close Price	52 Wk Low
BALKRISHN	1334	1354	--	--	--
BIRLASOFT	125	127	--	--	--
CADILAH	395	411	--	--	--
EID PARRY	293	315	--	--	--
GRANULES	318	319	--	--	--

Source: BSE

Market Technical Outlook



Nifty opened higher but was unable to sustain the opening gains which led Nifty to close with marginal gains. We still maintain our stance that prices are trading within the supply zone of 11036 to 11433 (shown in red in the above graph). Further, the current price action has formed a Doji which suggests indecisiveness prevailing at current level. In coming trading session if prices trade above 11230 levels then it is likely to test 11300 - 11400 levels. On the downside, 10900 – 10800 levels may act as support for the day.

We still maintain our stance that Nifty is trading within the supply zone of 11036– 11433. Hence cautiously positive approach should be adopted at current level as stock specific activity is likely to continue..

Foreign Institutional Investments (FII's) Activities

Name of Segment	Net Buyer/seller	Rs In Cr
Index Futures	Net Sell	-528.06
Stock Futures	Net Sell	-367.32
Net Future Position	Net Sell	-895.38
Index Options	Net Sell	-720.14
Stock Options	Net Buy	45.72
Net Options Position	Net Sell	-674.42
FII In cash Segment	Net Sell	-60.18
DII In cash Segment	Net Sell	-425.98
Net Cash Position	Net Sell	-486.16

Guru Call: From the expert's desk

Company	Reco Date	Reco Price (Buy on dips)	High till date	Return%
Aditya Birla Capital	22-Nov-19	95.75	115.35	20.47%
Ajanta Pharma	04-Aug-20	1661.05	1717	3.26%
Akzo Nobel	13-Jul-20	1853	1895	2.22%
Alkem	08-Jul-20	2427	2583	6.04%
Asian Paints Ltd.	30-Mar-17	1068.10	1916.70	79.45%
Avenue Supermarts Ltd.	31-Jul-17	898.55	2560.00	184.90%
Axis Bank Ltd.	10-Apr-18	519.30	827.75	59.40%
Bajaj Finance Ltd.	11-Oct-18	2271.00	4923.40	116.79%
Bajaj Finserv Ltd	1-Nov-16	3416.80	9950.00	191.21%
Bajaj Holdings And Investment Ltd	19-May-16	1499.10	3950.00	163.49%
Bajaj-Auto	12-Jun-20	2782.00	3149.00	11.65%
Bandhan Bank Ltd.	19-Dec-18	556.40	650.00	16.82%
Bharat Petroleum Corporation Ltd.	23-Oct-19	531.50	549.00	3.29%
Bhartiartel	04-May-20	532.00	612.00	13.07%
Britannia	12-June-20	3366.00	4010.00	16.05%
Cadila	03-Apr-20	274.00	384.00	28.65%
Century Textile and Industries Ltd	25-Nov-16	326.00	656.90	101.50%
Cipla Ltd	20-Mar-17	597.30	678.45	13.59%
Colgate Palmolive	16-Sep-19	1314.00	1642.60	25.01%
Crompto Greaves Consumer	11-Jun-20	225.00	254.00	11.42%
Dabur India	22-Oct-19	466.00	525.00	12.66%
Divislab	04-Aug-20	2641.00	2716.60	2.78%
DLF Ltd	10-Apr-19	194.30	265.90	36.85%
Dr Reddy	04-Aug-20	4530.00	4664.90	2.89%
Emami Limited	26-Jun-19	290.35	357.70	23.20%
Fortis	14-Jul-20	127.00	139.00	8.63%
Galaxy Surface	01-Jul-20	1557.00	1665.00	6.49%
Goderj CP	16-Jun-20	634.00	721.00	12.07%
Godrej Industries Ltd.	12-Feb-18	550.70	657.60	19.41%
HDFC Asset Management Company Ltd.	19-Dec-18	1572.90	3844.00	144.39%
HDFC Bank Limited	10-Nov-16	639.00	1305.50	104.30%
HDFC Life Insurance Co Ltd	19-Jan-18	485.05	646.40	33.26%
Hindustan Unilever Ltd.	13-Nov-17	1290.70	2308.20	78.83%
Housing Development Finance Corp Ltd	19-Dec-17	1720.00	2499.90	45.34%
ICICI Bank Ltd.	6-Apr-18	278.65	552.20	98.17%
ICICI Lombard General Insurance	19-Sep-19	1154.90	1440.40	24.72%
ICICI Prudential Life Insurance Company Ltd.	28-Jun-18	375.80	537.30	42.97%
Indusindbnk	08-Jun-20	451.00	577.00	21.84%
Infosys Ltd.	17-Aug-17	487.60	847.00	73.71%
Jk Cement	19-Jun-20	1378.00	1568.00	12.12%
JK Lakshmi Cement	03-Jul-20	276.00	305.00	9.1%
Jyoti lab	05-Aug-20	132.90	143.90	7.64%
Kansai Nerolac Paints	16-Dec-19	529.85	551.00	3.99%
Kotak Mahindra Bank Ltd	10-Nov-16	822.10	1740.00	111.65%
Mahanagar Gas	15-Nov-19	1029.00	1246.20	21.11%
Mahindra & Mahindra Ltd.	5-Jun-17	709.25	993.00	40.01%
Manappuram Finance Ltd.	24-Apr-18	119.20	194.80	63.42%
Marico Ltd.	4-Apr-18	325.00	404.00	24.31%
Nam-India	25-Nov-18	377.00	452.90	20.13%
Nestle India Ltd.	27-Sep-18	9729.40	16835.15	73.03%
NMDC	05-Aug-20	84.90	88.05	3.58%
Oberoi Realty Ltd.	23-Nov-17	508.60	641.70	26.17%

Guru Call: From the expert's desk

Company	Reco Date	Reco Price (Buy on dips)	High till date	Return%
Pfizer	22-Jul-2020	4150.00	4450.00	6.74%
Phoenix Mills Limited	7-Jul-19	655.15	979.00	49.43%
Pidilite Industries Limited	4-Oct-16	681.60	1661.00	143.69%
Reliance	22-Apr-20	1351.00	2198.00	38.54%
Rites Ltd.	19-Dec-18	226.96	331.00	45.84%
SBI Card	16-Jul-20	719.00	798.00	9.90%
SBI Life	20-May-20	715.00	895.00	20.11%
Tata Chemicals Limited	24-Dec-19	296.89	339.70	14.42%
Tata Consultancy Services Ltd.	8-Jan-18	1344.60	2296.20	70.77%
Tata Consumer	29-Jun-17	149.15	408.00	173.55%
Torent Pharma	04-Aug-20	2727.95	2881.50	5.33%
Trent Ltd.	19-Dec-18	348.40	794.00	127.90%
Ultratech Cement Ltd.	19-Dec-18	4084.60	4904.95	20.08%
Voltas Ltd.	27-Mar-18	613.90	741.00	20.70%
Whirlpool Of India Ltd.	7-Dec-16	872.25	2555.00	192.92%
Zee Entertainment	22-Nov-19	345.00	362.00	4.93%

NIFTY 50 STOCKS BELOW 200SMA

SCRIP NAME	SMA 200	CLOSING (05-08-2020)
ZEEL	215.29	145.55
LT	1108.81	925.75
ITC	208.51	192.8
SBIN	250.55	191.45
GRASIM	657.43	633.45
TATAMOTORS	129.33	115.4
HDFC	2028.26	1776.7
BPCL	422.77	410.45
ICICIBANK	431.06	352.2
HDFCBANK	1110.89	1027.55
ASIANPAINT	1732.05	1716.3
IOC	104.36	86.6
AXISBANK	573.11	434.95
ONGC	99.36	76.95
UPL	480.87	453.6
GAIL	106.96	93.3
INDUSINDBK	911.01	492.75
BAJFINANCE	3439.56	3262.15
ADANIPORTS	339.77	327.1
POWERGRID	178.85	175.95
KOTAKBANK	1465.77	1334.2
TECHM	668.58	648.55
NTPC	103.22	85.9
BAJAJFINSV	7302.65	6242.05
COALINDIA	165.37	128.45
INFRADEL	216.1	191.05
--	--	--
--	--	--
--	--	--
--	--	--
--	--	--
--	--	--
--	--	--

Weekly Expiry Most Active Nifty Call Option

Symbol	Expiry Date	Strike Price	Highest Open Interest (OI)
NIFTY	06-Aug-2020	11200	4,948,125
NIFTY	06-Aug-2020	11300	3,976,350
NIFTY	06-Aug-2020	11100	2,786,250

Weekly Expiry Most Active Nifty Put Option

Symbol	Expiry Date	Strike Price	Highest Open Interest (OI)
NIFTY	06-Aug-2020	11000	3,754,200
NIFTY	06-Aug-2020	10900	3,052,125
NIFTY	06-Aug-2020	11100	2,440,050

Securities in Ban For Trade Date 06-08-2020

N/A

Bulk Deals (BSE)

Deal Date	Scrip Name	Client Name	Deal Type	Quantity	Price
5-Aug-20	MFSL	MAX VENTURES INVESTMENT HOLDINGS PRIVATE LIMITED	S	6100000	535.18
5-Aug-20	NIITLTD	MASSACHUSETTS INSTITUTE OF TECHNOLOGY	B	1400000	96.75

Bulk Deals (NSE)

Deal Date	Scrip Name	Client Name	Deal Type	Quantity	Price
5-Aug-20	DCBBANK	OMAN INDIA JOINT INVESTMENT FUND II	BUY	5069903	81.90
5-Aug-20	NIITLTD	MASSACHUSETTS INSTITUTE OF TECHNOLOGY	BUY	1600000	96.75
5-Aug-20	DCBBANK	MOTILAL OSWAL ASSET MANAGEMENT COMPANY LIMITED A/C PMS INVEST IN	SELL	5000000	81.90

Note- Executed on 05th Aug 2020. Bulk Deal Buy/Sell done by fund house is considered.

Research Analyst Registration No.	Contact	Website	mail Id
INH000002764	SMS: 'Arihant' to 56677	www.arihantcapital.com	arihant.research@arihantcapital.com

**Arihant is Forbes Asia's '200 Best under a \$Billion' Company
'Best Emerging Commodities Broker' awarded by UTV Bloomberg**

Disclaimer: This document has been prepared by Arihant Capital Markets Limited (hereinafter called as Arihant) and its subsidiaries and associated companies. This document does not constitute an offer or solicitation for the purchase and sale of any financial instrument by Arihant. Receipt and review of this document constitutes your agreement not to circulate, redistribute, retransmit or disclose to others the contents, opinions, conclusion, or information contained herein. This document has been prepared and issued on the basis of publicly available information, internally developed data and other sources believed to be reliable. Whilst meticulous care has been taken to ensure that the facts stated are accurate and opinions given are fair and reasonable, neither the analyst nor any employee of our company is in any way is responsible for its contents and nor is its accuracy or completeness guaranteed. This document is prepared for assistance only and is not intended to be and must not alone be taken as the basis for an investment decision. All recipients of this material should before dealing and or transacting in any of the products referred to in this material make their own investigation, seek appropriate professional advice. The investments discussed in this material may not be suitable for all investors. The recipient alone shall be fully responsible/are liable for any decision taken on the basis of this material. Arihant Capital Markets Ltd (including its affiliates) or its officers, directors, personnel and employees, including persons involved in the preparation or issuance of this material may; (a) from time to time, have positions in, and buy or sell or (b) be engaged in any other transaction and earn brokerage or other compensation in the financial instruments/products discussed herein or act as advisor or lender/borrower in respect of such securities/financial instruments/products or have other potential conflict of interest with respect to any recommendation and related information and opinions. The said persons may have acted upon and/or in a manner contradictory with the information contained here and may have a position or be otherwise interested in the investment referred to in this document before its publication. The user of this report assumes the entire risk of any use made of this data/report. Arihant especially states that it has no financial liability, whatsoever, to the users of this report.

Arihant Capital Markets Ltd

#1011 Solitaire Corporate Park Building No.10 1st Floor
 Andheri Ghatkopar Link Road Chakala Andheri (E) Mumbai-400093
 T. 022-42254800. Fax: 022-42254880
www.arihantcapital.com