

To join our research group on TELEGRAM, please click on the links - <https://bit.ly/37T17JR> and <https://bit.ly/2svtU7k>

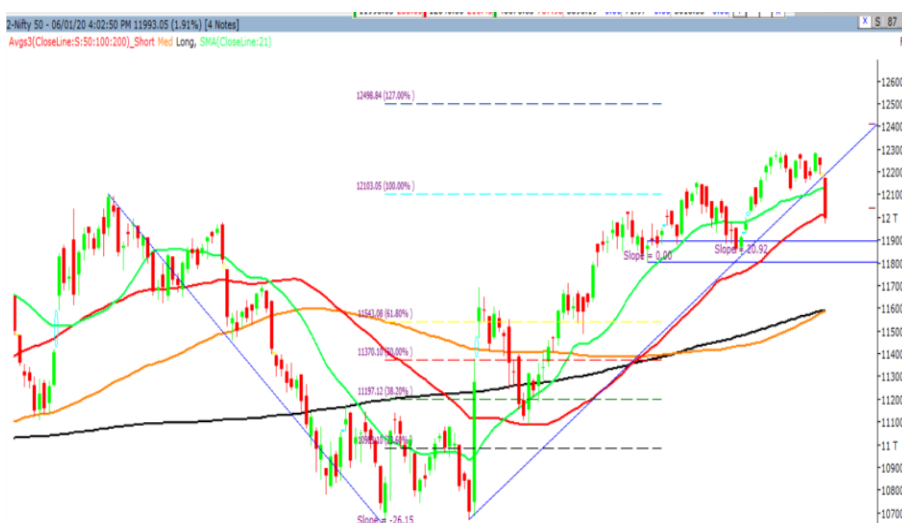
Tuesday, 07th January, 2020

Indian Indices	Last Price	(%) Chg
BSE	40676.63	-1.90
NSE	11993.05	-1.91
World Indices		
Dow Jones	28703.38	0.24
Nasdaq	9071.47	0.56
Nikkei	23552.97	1.50
Hang Seng	28352.40	0.45
FTSE	7575.34	-0.62
Commodity	Last Price	(%) Chg
GOLD(\$/ounce)	1561.50	-0.47
Silver (\$/Ounce)	18.06	-0.65
Crude (\$/BBL)	67.95	-1.39
Aluminium spot (\$/mt)	1825.75	-0.38
Copper SPOT (\$/mt)	6158.50	0.24
Lead Spot (\$/MT)	1919.75	0.07
Natural gas \$/MMBtu	2.15	0.84
Currency	Last Price	(%) Chg
USD-INR	72.10	0.19
EUR-INR	80.86	0.84
Bond	Last Price	(%) Chg
India 10 Yr Bond yield	6.56	0.88

52 Wk High (A group)			52 Wk Low (A group)		
Company	Close Price	52 Wk High	Company	Close Price	52 Wk Low
INFIBEAM	56.2	57.4	INDIANB	100	99.5
MUTHOO	759	798	--	--	--
NIITTECH	1648	1660	--	--	--
--	--	--	--	--	--
--	--	--	--	--	--

Source: BSE

Market Technical Outlook



Nifty opened lower in wake of weak global clue and momentum on the downside intensified as the day progressed which led the indices to close deep in red. On the daily chart we are observing that prices have closed below the 50-day SMA (12014) which is sign of weakness. Hence, cautious approach should be adopted going forward.

In coming trading session if Nifty opens in the range of 12041 - 12089 then go short, with a stop loss of 12180 for a target of 11994 – 11914 - 11866 levels.

News for stocks

NTPC	NTPC outbids the Adani Group for the Avantha Group's 600 MW Jhabua power plant in Madhya Pradesh, with a Rs 1,900-crore offer that was two and-a-half times more than the rival bid.
JK Tyre	J K Tyre & Industries aims to reduce debt by over 50% in three years.

Foreign Institutional Investments (FII's) Activities

Name of Segment	Net Buyer/seller	Rs In Cr
Index Futures	Net Sell	-976.67
Stock Futures	Net Sell	-475.85
Net Future Position	Net Sell	-1452.52
Index Options	Net Sell	-582.92
Stock Options	Net Sell	-65.58
Net Options Position	Net Sell	-648.50
FII In cash Segment	Net Sell	-103.84
DII In cash Segment	Net Sell	-23.70
Net Cash Position	Net Sell	-127.54

Technical Levels for Nifty 50 Companies

Company	Closing 06-01-2020	Buy/Sell Trigger	Resistance 1	Resistance 2	Support 1	Support 2
ADANI PORTS	380.20	380.98	387.22	394.23	373.97	367.73
ASIAN PAINT	1707.15	1713.05	1732.10	1757.05	1688.10	1669.05
AXIS BANK	723.25	728.18	734.67	746.08	716.77	710.28
BAJAJ-AUTO	3037.65	3045.77	3063.48	3089.32	3019.93	3002.22
BAJAJ FINSV	9042.70	9134.57	9247.13	9451.57	8930.13	8817.57
BAJ FINANCE	3996.70	4061.50	4139.20	4281.70	3919.00	3841.30
BHARTIARTL	449.65	450.58	456.52	463.38	443.72	437.78
BPCL	469.15	471.43	477.72	486.28	462.87	456.58
BRITANNIA	3022.05	3016.42	3037.78	3053.52	3000.68	2979.32
CIPLA	466.75	465.97	470.73	474.72	461.98	457.22
COALINDIA	205.70	206.37	209.28	212.87	202.78	199.87
DRREDDY	2878.85	2876.95	2899.70	2920.55	2856.10	2833.35
EICHER MOT	20860.45	20899.98	21060.46	21260.48	20699.96	20539.48
GAIL	124.35	124.48	126.12	127.88	122.72	121.08
GRASIM	737.00	742.60	750.20	763.40	729.40	721.80
HCLTECH	582.00	584.55	589.65	597.30	576.90	571.80
HDFC	2384.10	2400.17	2428.93	2473.77	2355.33	2326.57
HDFC BANK	1240.95	1246.25	1256.50	1272.05	1230.70	1220.45
HEROMOTOCO	2368.15	2385.72	2411.38	2454.62	2342.48	2316.82
HINDALCO	209.30	211.00	213.95	218.60	206.35	203.40
HINDUNILVR	1915.45	1918.70	1926.15	1936.85	1908.00	1900.55
ICICIBANK	525.70	528.92	534.03	542.37	520.58	515.47
INDUSINDBK	1469.40	1484.20	1502.95	1536.50	1450.65	1431.90
INFRA TEL	242.75	244.15	246.30	249.85	240.60	238.45
INFY	738.85	743.05	749.60	760.35	732.30	725.75
IOC	124.90	125.30	126.10	127.30	124.10	123.30
ITC	235.10	236.13	237.27	239.43	233.97	232.83
JSWSTEEL	264.25	265.77	269.23	274.22	260.78	257.32
KOTAK BANK	1652.55	1649.53	1660.47	1668.38	1641.62	1630.68
LT	1316.75	1320.95	1327.80	1338.85	1309.90	1303.05
M&M	524.50	525.00	529.50	534.50	520.00	515.50
MARUTI	7042.40	7092.97	7159.43	7276.47	6975.93	6909.47
NESTLE IND	14416.65	14411.22	14547.43	14678.22	14280.43	14144.22
NTPC	118.90	118.18	119.87	120.83	117.22	115.53
ONGC	126.25	127.05	129.00	131.75	124.30	122.35
POWERGRID	193.10	191.68	195.37	197.63	189.42	185.73
RELIANCE	1501.50	1509.13	1520.27	1539.03	1490.37	1479.23
SBIN	319.00	322.80	327.90	336.80	313.90	308.80
SUN PHARMA	439.95	439.92	444.73	449.52	435.13	430.32
TATAMOTORS	185.65	187.23	189.42	193.18	183.47	181.28
TATASTEEL	473.25	474.60	478.65	484.05	469.20	465.15
TCS	2200.45	2204.77	2221.63	2242.82	2183.58	2166.72
TECHM	770.40	772.45	776.75	783.10	766.10	761.80
TITAN	1158.60	1160.03	1169.97	1181.33	1148.67	1138.73
ULTRACEMCO	4157.10	4162.62	4194.23	4231.37	4125.48	4093.87
UPL	584.95	584.32	589.63	594.32	579.63	574.32
VEDL	150.55	152.77	155.48	160.42	147.83	145.12
WIPRO	252.15	252.25	254.35	256.55	250.05	247.95
YES BANK	45.15	45.63	46.27	47.38	44.52	43.88
ZEEL	261.50	265.70	271.00	280.50	256.20	250.90

(Source – IRIS)

Guru Call: From the expert's desk

Company	Reco Date	Reco Price (Buy on dips)	High till date	Return%
Aditiya Birla Capital	22-Nov-19	95.75	114.60	19.69%
Asian Paints Ltd.	30-Mar-17	1068.10	1834.80	71.78%
Avenue Supermarts Ltd.	31-Jul-17	898.55	2010.00	123.69%
Axis Bank Ltd.	10-Apr-18	519.30	827.75	59.40%
Bajaj Finance Ltd.	11-Oct-18	2271.00	4295.75	89.16%
Bajaj Finserv Ltd	1-Nov-16	3416.80	9530.95	178.94%
Bajaj Holdings And Investment Ltd	19-May-16	1499.10	3903.95	160.42%
Bandhan Bank Ltd.	19-Dec-18	556.40	650.00	16.82%
Bharat Petroleum Corporation Ltd.	23-Oct-19	531.50	549.00	3.29%
Century Textile and Industries Ltd	25-Nov-16	326.00	515.10	58.01%
Cipla Ltd	20-Mar-17	597.30	678.45	13.59%
Colgate Palmolive	16-Sep-19	1314.00	1642.60	25.01%
Container Corporation	22-Nov-19	577.00	603.00	4.51%
Dabur India	22-Oct-19	466.00	487.70	4.66%
DLF Ltd	10-Apr-19	194.30	235.15	21.02%
Emami Limited	26-Jun-19	290.35	355.40	22.40%
Godrej Industries Ltd.	12-Feb-18	550.70	657.60	19.41%
Godrej Properties Ltd.	19-Dec-18	685.30	1119.60	63.37%
Grasim Industries Ltd.	31-May-17	1132.50	1331.00	17.53%
Havells India Ltd.	8-Dec-17	525.75	806.85	53.47%
Housing Development Finance Corp Ltd	19-Dec-17	1720.00	2472.75	43.76%
HDFC Asset Management Company Ltd.	19-Dec-18	1572.90	3844.00	144.39%
HDFC Bank Limited	10-Nov-16	639.00	1305.50	104.30%
HDFC Life Insurance Co Ltd	19-Jan-18	485.05	646.40	33.26%
Hindustan Unilever Ltd.	13-Nov-17	1290.70	2190.00	69.68%
ICICI Bank Ltd.	6-Apr-18	278.65	552.20	98.17%
ICICI Prudential Life Insurance Company Ltd.	28-Jun-18	375.80	537.30	42.97%
ICICI Lombard General Insurance	19-Sep-19	1154.90	1440.40	24.72%
Infosys Ltd.	17-Aug-17	487.60	847.00	73.71%
Kansai Nerolac Paints	16-Dec-19	529.85	551.00	3.99%
Kotak Mahindra Bank Ltd	10-Nov-16	822.10	1734.80	111.02%
Mahindra & Mahindra Ltd.	5-Jun-17	709.25	993.00	40.01%
Manappuram Finance Ltd.	24-Apr-18	119.20	181.50	52.27%
Mahanagar Gas	15-Nov-19	1029.00	1089.00	5.83%
Marico Ltd.	4-Apr-18	325.00	404.00	24.31%
Nestle India Ltd.	27-Sep-18	9729.40	15146.90	55.68%
Oberoi Realty Ltd.	23-Nov-17	508.60	641.70	26.17%
Phoenix Mills Limited	7-Jul-19	655.15	872.00	33.10%
Pidilite Industries Limited	4-Oct-16	681.60	1493.50	119.12%
Prestige Estates Projects Limited	6-Jun-19	286.70	365.80	27.59%
Reliance Nippon	25-Nov-18	377.00	386.40	2.49%
Rites Ltd.	19-Dec-18	226.96	324.80	43.11%
RBL Bank	22-Nov-19	334.00	391.20	17.13%
State Bank Of India	28-Aug-18	308.00	373.80	21.36%
Shipping Corporation	22-Nov-19	64.00	65.95	3.05%
Tata Chemicals Limited	24-Dec-19	682.80	692.00	1.35%
Tata Global Beverages Ltd.	29-Jun-17	149.15	330.05	121.29%
Tata Consultancy Services Ltd.	8-Jan-18	1344.60	2296.20	70.77%
Trent Ltd.	19-Dec-18	348.40	567.90	63.00%
Ultratech Cement Ltd.	19-Dec-18	4084.60	4904.95	20.08%
Voltas Ltd.	27-Mar-18	613.90	725.40	18.16%
Whirlpool Of India Ltd.	7-Dec-16	872.25	2498.00	186.39%
Zee Entertainment	22-Nov-19	345.00	362.00	4.93%

NIFTY 50 STOCKS BELOW 200SMA

SCRIP NAME	SMA 200	CLOSING (06-01-2020)
INFY	745.01	738.85
WIPRO	262.61	252.15
ZEEL	338.05	261.50
LT	1402.00	1316.75
ITC	266.69	235.10
GRASIM	804.71	737.00
CIPLA	504.43	466.75
M&M	592.97	524.50
HEROMOTOCO	2580.49	2368.15
IOC	143.02	124.90
AXISBANK	734.52	723.25
ONGC	145.45	126.25
TITAN	1174.64	1158.60
VEDL	157.77	150.55
UPL	601.95	584.95
GAIL	144.19	124.35
INDUSINDBK	1480.32	1469.40
ADANIPTS	386.29	380.20
POWERGRID	196.90	193.10
ULTRACEMCO	4264.13	4157.10
NTPC	125.47	118.90
YESBANK	110.64	45.15
COALINDIA	219.85	205.70
INFRATEL	263.09	242.75

Weekly Expiry Most Active Nifty Call Option

Symbol	Expiry Date	Strike Price	Highest Open Interest (OI)
NIFTY	09-Jan-19	12200	2829900
NIFTY	09-Jan-19	12300	2556450
NIFTY	09-Jan-19	12100	2521125

Weekly Expiry Most Active Nifty Put Option

Symbol	Expiry Date	Strike Price	Highest Open Interest (OI)
NIFTY	09-Jan-19	12000	2304000
NIFTY	09-Jan-19	11900	1644825
NIFTY	09-Jan-19	11800	1269675

Bulk Deals (BSE)

Deal Date	Scrip Name	Client Name	Deal Type	Quantity	Price
6-Jan-20	ADFFOODS	AUTHUM INVESTMENT & INFRASTRUCTURE LIMITED	B	3112504	306.00
6-Jan-20	ADFFOODS	MENTOR CAPITAL LIMITED	S	3112504	306.00
6-Jan-20	NATHBIOGEN	AUTHUM INVESTMENT & INFRASTRUCTURE LIMITED	B	1814819	356.00
6-Jan-20	NATHBIOGEN	MENTOR CAPITAL LIMITED	S	1814819	356.00
6-Jan-20	WELCORP	AUTHUM INVESTMENT & INFRASTRUCTURE LIMITED	B	5451418	147.00
6-Jan-20	WELCORP	MENTOR CAPITAL LIMITED	S	5,451,418	147.00
6-Jan-20	WELENT	AUTHUM INVESTMENT & INFRASTRUCTURE LIMITED	B	4,300,000	79.00
6-Jan-20	WELENT	MENTOR CAPITAL LIMITED	S	4,300,000	79.00

Bulk Deals (NSE)

N/A

 Note- Executed on 06th Jan 2020. Bulk Deal Buy/Sell done by fund house is considered.

Securities in Ban For Trade Date 07-01-2020

YESBANK

Research Analyst Registration No.

INH000002764

Contact

SMS: 'Arihant' to 56677

Website
www.arihantcapital.com
mail Id
arihant.research@arihantcapital.com

**Arihant is Forbes Asia's '200 Best under a \$Billion' Company
 'Best Emerging Commodities Broker' awarded by UTV Bloomberg**

Disclaimer: This document has been prepared by Arihant Capital Markets Limited (hereinafter called as Arihant) and its subsidiaries and associated companies. This document does not constitute an offer or solicitation for the purchase and sale of any financial instrument by Arihant. Receipt and review of this document constitutes your agreement not to circulate, redistribute, retransmit or disclose to others the contents, opinions, conclusion, or information contained herein. This document has been prepared and issued on the basis of publicly available information, internally developed data and other sources believed to be reliable. Whilst meticulous care has been taken to ensure that the facts stated are accurate and opinions given are fair and reasonable, neither the analyst nor any employee of our company is in any way is responsible for its contents and nor is its accuracy or completeness guaranteed. This document is prepared for assistance only and is not intended to be and must not alone be taken as the basis for an investment decision. All recipients of this material should before dealing and or transacting in any of the products referred to in this material make their own investigation, seek appropriate professional advice. The investments discussed in this material may not be suitable for all investors. The recipient alone shall be fully responsible/are liable for any decision taken on the basis of this material. Arihant Capital Markets Ltd (including its affiliates) or its officers, directors, personnel and employees, including persons involved in the preparation or issuance of this material may; (a) from time to time, have positions in, and buy or sell or (b) be engaged in any other transaction and earn brokerage or other compensation in the financial instruments/products discussed herein or act as advisor or lender/borrower in respect of such securities/financial instruments/products or have other potential conflict of interest with respect to any recommendation and related information and opinions. The said persons may have acted upon and/or in a manner contradictory with the information contained here and may have a position or be otherwise interested in the investment referred to in this document before its publication. The user of this report assumes the entire risk of any use made of this data/report. Arihant especially states that it has no financial liability, whatsoever, to the users of this report.

Arihant Capital Markets Ltd

#1011 Solitaire Corporate Park Building No.10 1st Floor
 Andheri Ghatkopar Link Road Chakala Andheri (E) Mumbai-400093
 T. 022-42254800. Fax: 022-42254880
www.arihantcapital.com