

To join our research group on TELEGRAM, please click on the links - <https://bit.ly/2CkisAK> and <https://bit.ly/3fKXKHK>

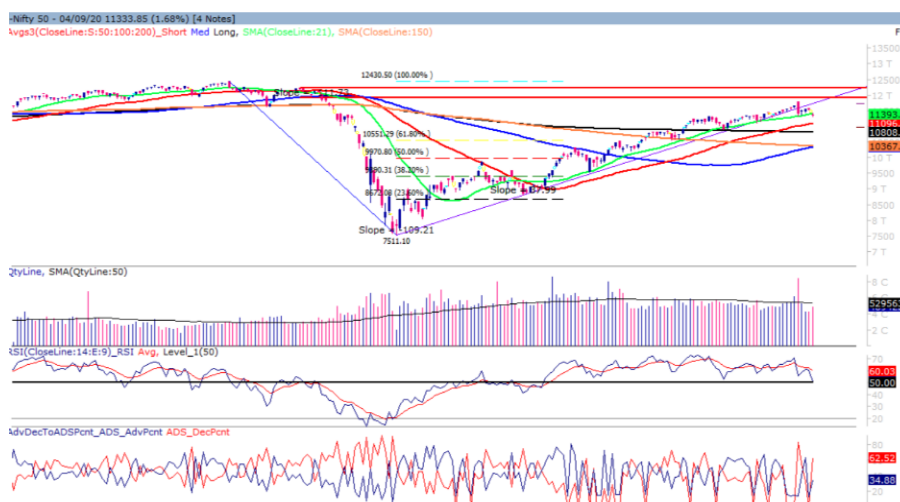
Monday, 7th Aug, 2020

Indian Indices	Last Price	(%) Chg
NSE	11333.85	-1.68
BSE	38357.18	1.63
World Indices	Last Price	(%) Chg
Dow Jones	28133.31	-0.56
Nasdaq	11313.13	-1.27
Nikkei	23126.92	-0.34
Hang Seng	24659.24	-0.15
FTSE	5799.08	-0.88
Commodity	Last Price	(%) Chg
GOLD(\$/ounce)	1940.30	0.31
Silver (\$/Ounce)	26.92	0.76
Crude (\$/BBL)	42.15	-1.20
Aluminium spot (\$/mt)	1792.00	0.06
Copper SPOT (\$/mt)	6787.25	0.12
Lead Spot (\$/MT)	1979.50	0.16
Natural gas \$/MMBtu	2.56	-1.08
Currency	Last Price	(%) Chg
USD-INR	73.31	-0.49
EUR-INR	86.92	-0.13
Bond	Last Price	(%) Chg
India 10 Yr Bond yield	5.93	0.58

52 Wk High (A group)			52 Wk Low (A group)		
Company	Close Price	52 Wk High	Company	Close Price	52 Wk Low
AGL	187	200	--	--	--
CG POWER	24	24	--	--	--
GRANULES	346	350	--	--	--
IDEA	12	13.4	--	--	--
--	--	--	--	--	--

Source: BSE

Market Technical Outlook



Nifty opened down with a gap and traded in a narrow range with negative bias to close in red. On the daily chart, we are observing that prices have closed below the 21-day SMA (11393) with higher volumes. However, the price action has formed a 'Doji' candlestick pattern which suggests that there could be some consolidation at current level. At present we could say that uptrend has come under pressure. In coming trading session if prices trade below 11300 then it may test 11200 -11000 levels. On the upside 11450 – 11550 levels may act as resistance for the day.

Broadly, we are of the opinion that uptrend is under pressure and 11096 is the next important support. Hence cautious approach at current level.

Foreign Institutional Investments (FII's) Activities

Name of Segment	Net Buyer/seller	Rs In Cr
Index Futures	Net Sell	-696.11
Stock Futures	Net Sell	-603.26
Net Future Position	Net Sell	-1299.37
Index Options	Net Buy	65.03
Stock Options	Net Sell	-22.36
Net Options Position	Net Buy	42.67
FII In cash Segment	Net Sell	-1888.78
DII In cash Segment	Net Sell	-456.88
Net Cash Position	Net Sell	-2345.66

Guru Call: From the expert's desk

Company	Reco Date	Reco Price (Buy on dips)	High till date	Return%
Aditya Birla Capital	22-Nov-19	95.75	115.35	20.47%
Ajanta Pharma	04-Aug-20	1661.05	1717	3.26%
Akzo Nobel	13-Jul-20	1853	1895	2.22%
Alkem	08-Jul-20	2427	2583	6.04%
Asian Paints Ltd.	30-Mar-17	1068.10	1916.70	79.45%
Avenue Supermarts Ltd.	31-Jul-17	898.55	2560.00	184.90%
Axis Bank Ltd.	10-Apr-18	519.30	827.75	59.40%
Bajaj Finance Ltd.	11-Oct-18	2271.00	4923.40	116.79%
Bajaj Finserv Ltd	1-Nov-16	3416.80	9950.00	191.21%
Bajaj Holdings And Investment Ltd	19-May-16	1499.10	3950.00	163.49%
Bajaj-Auto	12-Jun-20	2782.00	3149.00	11.65%
Bandhan Bank Ltd.	19-Dec-18	556.40	650.00	16.82%
BEL	13-Aug-20	110.00	115.00	8.69%
Bharat Petroleum Corporation Ltd.	23-Oct-19	531.50	549.00	3.29%
Bhartiartel	04-May-20	532.00	612.00	13.07%
Britannia	12-June-20	3366.00	4010.00	16.05%
Cadila	03-Apr-20	274.00	384.00	28.65%
Century Textile and Industries Ltd	25-Nov-16	326.00	656.90	101.50%
Cipla Ltd	20-Mar-17	597.30	678.45	13.59%
Colgate Palmolive	16-Sep-19	1314.00	1642.60	25.01%
Crompto Greaves Consumer	11-Jun-20	225.00	254.00	11.42%
Dabur India	22-Oct-19	466.00	525.00	12.66%
Divislab	04-Aug-20	2641.00	2716.60	2.78%
DLF Ltd	10-Apr-19	194.30	265.90	36.85%
Dr Reddy	04-Aug-20	4530.00	4664.90	2.89%
Emami Limited	26-Jun-19	290.35	357.70	23.20%
Fortis	14-Jul-20	127.00	139.00	8.63%
Galaxy Surface	01-Jul-20	1557.00	1665.00	6.49%
Goderj CP	16-Jun-20	634.00	721.00	12.07%
Godrej Industries Ltd.	12-Feb-18	550.70	657.60	19.41%
HDFC Asset Management Company Ltd.	19-Dec-18	1572.90	3844.00	144.39%
HDFC Bank Limited	10-Nov-16	639.00	1305.50	104.30%
HDFC Life Insurance Co Ltd	19-Jan-18	485.05	646.40	33.26%
Hindustan Unilever Ltd.	13-Nov-17	1290.70	2308.20	78.83%
Housing Development Finance Corp Ltd	19-Dec-17	1720.00	2499.90	45.34%
ICICI Bank Ltd.	6-Apr-18	278.65	552.20	98.17%
ICICI Lombard General Insurance	19-Sep-19	1154.90	1440.40	24.72%
ICICI Prudential Life Insurance Company Ltd.	28-Jun-18	375.80	537.30	42.97%
Indusindbnk	08-Jun-20	451.00	577.00	21.84%
Infosys Ltd.	17-Aug-17	487.60	847.00	73.71%
Ipca Lab	11-Aug-20	2099.00	2156.00	2.66%
Jk Cement	19-Jun-20	1378.00	1568.00	12.12%
JK Lakshmi Cement	03-Jul-20	276.00	305.00	9.1%
Jyoti lab	05-Aug-20	132.90	143.90	7.64%
Kansai Nerolac Paints	16-Dec-19	529.85	551.00	3.99%
Kotak Mahindra Bank Ltd	10-Nov-16	822.10	1740.00	111.65%
Mahanagar Gas	15-Nov-19	1029.00	1246.20	21.11%
Mahindra & Mahindra Ltd.	5-Jun-17	709.25	993.00	40.01%
Manappuram Finance Ltd.	24-Apr-18	119.20	194.80	63.42%
Marico Ltd.	4-Apr-18	325.00	404.00	24.31%
Nam-India	25-Nov-18	377.00	452.90	20.13%
Nestle India Ltd.	27-Sep-18	9729.40	16835.15	73.03%

Guru Call: From the expert's desk

Company	Reco Date	Reco Price (Buy on dips)	High till date	Return%
NMDC	05-Aug-20	84.90	88.05	3.58%
Oberoi Realty Ltd.	23-Nov-17	508.60	641.70	26.17%
Pfizer	22-Jul-20	4150.00	4450.00	6.74%
Phoenix Mills Limited	7-Jul-19	655.15	979.00	49.43%
Pidilite Industries Limited	4-Oct-16	681.60	1661.00	143.69%
Reliance	22-Apr-20	1351.00	2198.00	38.54%
Rites Ltd.	19-Dec-18	226.96	331.00	45.84%
SBI Card	16-Jul-20	719.00	798.00	9.90%
SBI Life	20-May-20	715.00	895.00	20.11%
Sun Pharma	07-Aug-20	525.00	550.00	9.09%
Tata Chemicals Limited	24-Dec-19	296.89	339.70	14.42%
Tata Consultancy Services Ltd.	8-Jan-18	1344.60	2296.20	70.77%
Tata Consumer	29-Jun-17	149.15	408.00	173.55%
Torent Pharma	04-Aug-20	2727.95	2881.50	5.33%
Trent Ltd.	19-Dec-18	348.40	794.00	127.90%
Ultratech Cement Ltd.	19-Dec-18	4084.60	4904.95	20.08%
Voltas Ltd.	27-Mar-18	613.90	741.00	20.70%
Whirlpool Of India Ltd.	7-Dec-16	872.25	2555.00	192.92%
Zee Entertainment	22-Nov-19	345.00	362.00	4.93%

NIFTY 50 STOCKS BELOW 200SMA

SCRIP NAME	SMA 200	CLOSING (04-09-2020)
LT	1058.55	942.5
ITC	202.07	186.7
SBIN	239.95	206.6
HDFC	1989.59	1769.7
BPCL	411.02	403.35
ICICIBANK	420.39	372.55
IOC	98.54	83.9
AXISBANK	543.33	455.2
ONGC	92.65	77.9
GAIL	103.58	98.05
SHREECEM	21206.97	20025.3
INDUSINDBK	823.73	616.15
POWERGRID	176.99	175.05
ULTRACEMCO	3936.86	3916.1
KOTAKBANK	1441.37	1380.05
NTPC	100.62	94.7
BAJAJFINSV	7064.74	6277.2
COALINDIA	157.47	132.45
--	--	--
--	--	--
--	--	--
--	--	--
--	--	--
--	--	--
--	--	--
--	--	--
--	--	--
--	--	--
--	--	--
--	--	--
--	--	--
--	--	--

Weekly Expiry Most Active Nifty Call Option

Symbol	Expiry Date	Strike Price	Highest Open Interest (OI)
NIFTY	10-Sep-2020	11700	2,694,675
NIFTY	10-Sep-2020	11600	2,579,025
NIFTY	10-Sep-2020	11800	2,395,800

Weekly Expiry Most Active Nifty Put Option

Symbol	Expiry Date	Strike Price	Highest Open Interest (OI)
NIFTY	10-Sep-2020	11400	2,905,275
NIFTY	10-Sep-2020	11500	2,780,175
NIFTY	10-Sep-2020	11100	2,376,750

Securities in Ban For Trade Date 07-09-2020

BHEL,CANBK,IBULHSGFIN,IDEA,JINDALSTEL,PNB

Bulk Deals (BSE)

Deal Date	Scrip Name	Client Name	Deal Type	Quantity	Price
4-Sep-20	SHILPAMED	NIPPON INDIA MUTUAL FUND	B	1000000	515.00
4-Sep-20	SHILPAMED	BARING INDIA PRIVATE EQUITY FUND III LIMITED	S	3680000	509.04
4-Sep-20	SHILPAMED	MILLENNIUM STOCK BROKING PVT LTD	B	606756	510.30
4-Sep-20	SHILPAMED	MILLENNIUM STOCK BROKING PVT LTD	S	59200	513.31

Bulk Deals (NSE)

Deal Date	Scrip Name	Client Name	Deal Type	Quantity	Price
4-Sep-20	SHILPAMED	NIPPON INDIA MUTUAL FUND	BUY	1125000	514.94
4-Sep-20	TATAMTRDVR	TATA SONS PRIVATE LIMITED	BUY	5302681	56.02
4-Sep-20	TEXRAIL	TEXMACO INFRASTRUCTURE & HOLDINGS LIMITED	BUY	3900000	28.90
4-Sep-20	APLAPOLLO	KITARA PIIN 1001	SELL	594049	2,375.14
4-Sep-20	GLOBUSSPR	PERPETUITY HEALTH TO WEALTH FUND	SELL	150000	204.14
4-Sep-20	SHILPAMED	BARING INDIA PRIVATE EQUITY FUND III LIMITED	SELL	2320000	512.97
4-Sep-20	SHILPAMED	BARCLAYS MERCHANT BANK SINGAPORE LIMITED	SELL	450000	513.36
4-Sep-20	SHILPAMED	TANO MAURITIUS INDIA FVCI II	SELL	850000	514.29
4-Sep-20	TEXRAIL	LIMITED ZUARI INVESTMENTS	SELL	3900000	28.90

 Note- Executed on 04th Sep 2020. Bulk Deal Buy/Sell done by fund house is considered.

Research Analyst Registration No.	Contact	Website	mail Id
INH000002764	SMS: 'Arihant' to 56677	www.arihantcapital.com	arihant.research@arihantcapital.com

**Arihant is Forbes Asia's '200 Best under a \$Billion' Company
'Best Emerging Commodities Broker' awarded by UTV Bloomberg**

Disclaimer: This document has been prepared by Arihant Capital Markets Limited (hereinafter called as Arihant) and its subsidiaries and associated companies. This document does not constitute an offer or solicitation for the purchase and sale of any financial instrument by Arihant. Receipt and review of this document constitutes your agreement not to circulate, redistribute, retransmit or disclose to others the contents, opinions, conclusion, or information contained herein. This document has been prepared and issued on the basis of publicly available information, internally developed data and other sources believed to be reliable. Whilst meticulous care has been taken to ensure that the facts stated are accurate and opinions given are fair and reasonable, neither the analyst nor any employee of our company is in any way is responsible for its contents and nor is its accuracy or completeness guaranteed. This document is prepared for assistance only and is not intended to be and must not alone be taken as the basis for an investment decision. All recipients of this material should before dealing and or transacting in any of the products referred to in this material make their own investigation, seek appropriate professional advice. The investments discussed in this material may not be suitable for all investors. The recipient alone shall be fully responsible/are liable for any decision taken on the basis of this material. Arihant Capital Markets Ltd (including its affiliates) or its officers, directors, personnel and employees, including persons involved in the preparation or issuance of this material may; (a) from time to time, have positions in, and buy or sell or (b) be engaged in any other transaction and earn brokerage or other compensation in the financial instruments/products discussed herein or act as advisor or lender/borrower in respect of such securities/financial instruments/products or have other potential conflict of interest with respect to any recommendation and related information and opinions. The said persons may have acted upon and/or in a manner contradictory with the information contained here and may have a position or be otherwise interested in the investment referred to in this document before its publication. The user of this report assumes the entire risk of any use made of this data/report. Arihant especially states that it has no financial liability, whatsoever, to the users of this report.

Arihant Capital Markets Ltd

#1011 Solitaire Corporate Park Building No.10 1st Floor
 Andheri Ghatkopar Link Road Chakala Andheri (E) Mumbai-400093
 T. 022-42254800. Fax: 022-42254880
www.arihantcapital.com