

To join our research group on TELEGRAM, please click on the links - <https://bit.ly/34zPV5q> and <https://bit.ly/3mvi2bY>

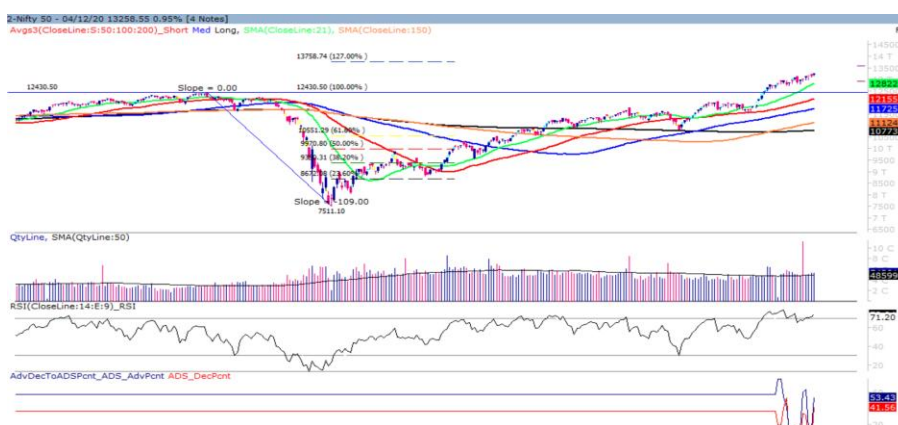
Monday, 07th Dec, 2020

| Indian Indices | Last Price | (%) Chg |
|------------------------|------------|---------|
| NSE | 13258.55 | 0.95 |
| BSE | 45079.55 | 446.90 |
| World Indices | Last Price | (%) Chg |
| Dow Jones | 30218.26 | 0.83 |
| Nasdaq | 12464.23 | 0.70 |
| Nikkei | 26645.23 | -0.40 |
| Hang Seng | 26353.14 | 1.80 |
| FTSE | 6550.23 | 0.92 |
| Commodity | Last Price | (%) Chg |
| GOLD(\$/ounce) | 1841.80 | 0.10 |
| Silver (\$/Ounce) | 24.26 | 0.01 |
| Crude (\$/BBL) | 48.98 | -0.55 |
| Aluminium spot (\$/mt) | 2020.50 | -1.07 |
| Copper SPOT (\$/mt) | 7729.00 | -0.34 |
| Lead Spot (\$/MT) | 2027.25 | -0.31 |
| Natural gas \$/MMBtu | 2.46 | -4.39 |
| Currency | Last Price | (%) Chg |
| USD-INR | 73.89 | -0.27 |
| EUR-INR | 89.88 | 0.15 |
| Bond | Last Price | (%) Chg |
| India 10 Yr Bond yield | 5.89 | 0.59 |

| 52 Wk High (A group) | | | 52 Wk Low (A group) | | |
|----------------------|-------------|------------|---------------------|-------------|-----------|
| Company | Close Price | 52 Wk High | Company | Close Price | 52 Wk Low |
| BAJAJELE | 608 | 612 | -- | -- | -- |
| ADANIPRT | 453 | 458 | -- | -- | -- |
| ADANITRN | 436 | 444 | -- | -- | -- |
| CADILAHC | 475 | 471 | -- | -- | -- |
| ASIANPNT | 2438 | 2443 | -- | -- | -- |

Source: BSE

Market Technical Outlook



Nifty, opened higher traded in a narrow range with choppiness but finally managed to close in green. On the daily chart, we are observing six narrow range body formations with higher highs which suggest that momentum on the upside is likely to continue. In coming trading session if Nifty trades above 13280 level then it may test 13400 - 13500 level. On the downside, 13100 - 13000 levels may act as support for the day.

We maintain our stance that the trend remains up but a consolidation or minor correction from current level cannot be ruled out. Hence, one should adopt buy on decline strategy..

Foreign Institutional Investments (FII's) Activities

| Name of Segment | Net Buyer/seller | Rs In Cr |
|-----------------------------|------------------|----------------|
| Index Futures | Net Buy | 897.07 |
| Stock Futures | Net Sell | -288.21 |
| Net Future Position | Net Buy | 608.86 |
| Index Options | Net Buy | 1356.95 |
| Stock Options | Net Sell | -75.98 |
| Net Options Position | Net Buy | 1280.97 |
| FII In cash Segment | Net Buy | 2969.59 |
| DII In cash Segment | Net Sell | -1971.60 |
| Net Cash Position | Net Buy | 997.99 |

Guru Call: From the expert's desk

| Company | Reco Date | Reco Price (Buy on dips) | High till date | Return% |
|--|------------|--------------------------|----------------|---------|
| Aarti drugs | 21-Aug-20 | 783.00 | 1026.95 | 31.16% |
| Aegis Logistics | 11-Sep-20 | 204.05 | 259.20 | 27.03% |
| Ajanta Pharma | 04-Aug-20 | 1661.05 | 1759.00 | 5.90% |
| Alkem | 08-Jul-20 | 2427 | 2583.00 | 6.04% |
| Asian Paints Ltd. | 30-Mar-17 | 1068.10 | 1916.70 | 79.45% |
| Avenue Supermarts Ltd. | 31-Jul-17 | 898.55 | 2560.00 | 184.90% |
| Axis Bank Ltd. | 10-Apr-18 | 519.30 | 827.75 | 59.40% |
| Bajaj Finance Ltd. | 11-Oct-18 | 2271.00 | 4923.40 | 116.79% |
| Bajaj Finserv Ltd | 1-Nov-16 | 3416.80 | 9950.00 | 191.21% |
| Bajaj Holdings And Investment Ltd | 19-May-16 | 1499.10 | 3950.00 | 163.49% |
| Bajaj-Auto | 12-Jun-20 | 2782.00 | 3159.00 | 13.55% |
| Bandhan Bank Ltd. | 19-Dec-18 | 556.40 | 650.00 | 16.82% |
| Biocon | 17-Sep-20 | 440.05 | 478.00 | 8.62% |
| Britannia | 12-June-20 | 3366.00 | 4010.00 | 16.05% |
| Cadila | 03-Apr-20 | 274.00 | 447.90 | 63.47% |
| CAMS | 08-Oct-20 | 1334.90 | 1371.20 | 2.72% |
| CDSL | 17-Sep-20 | 485.90 | 506.00 | 4.14% |
| Century Textile and Industries Ltd | 25-Nov-16 | 326.00 | 656.90 | 101.50% |
| Chola finance | 25-Sep-20 | 238.70 | 265.00 | 11.02% |
| Chola Holding | 23-Sep-20 | 391.80 | 424.00 | 8.22% |
| Cipla Ltd | 20-Mar-17 | 597.30 | 825.00 | 38.12% |
| Colgate Palmolive | 16-Sep-19 | 1314.00 | 1642.60 | 25.01% |
| Crompton Greaves Consumer | 11-Jun-20 | 225.00 | 300.50 | 33.56% |
| CUB | 28-Sep-20 | 135.65 | 153.00 | 12.79% |
| Dabur India | 22-Oct-19 | 466.00 | 535.00 | 14.81% |
| Divislab | 04-Aug-20 | 2641.00 | 3389.00 | 28.32% |
| DLF Ltd | 10-Apr-19 | 194.30 | 266.55 | 37.18% |
| Dr Reddy | 04-Aug-20 | 4530.00 | 5512.65 | 21.69% |
| Emami Limited | 26-Jun-19 | 290.35 | 407.55 | 40.37% |
| Fine Organic | 17-Sep-20 | 3145.00 | 3260.00 | 3.65% |
| Fortis | 14-Jul-20 | 127.00 | 142.70 | 12.36% |
| Galaxy Surface | 01-Jul-20 | 1557.00 | 2039.85 | 31.01% |
| Goderj CP | 16-Jun-20 | 634.00 | 762.00 | 20.19% |
| Godrej Industries Ltd. | 12-Feb-18 | 550.70 | 657.60 | 19.41% |
| Hatsun AgroProd. | 17-Sep-20 | 841.45 | 878.00 | 4.34% |
| HDFC Asset Management Company Ltd. | 19-Dec-18 | 1572.90 | 3844.00 | 144.39% |
| HDFC Bank Limited | 10-Nov-16 | 639.00 | 1305.50 | 104.30% |
| HDFC Life Insurance Co Ltd | 19-Jan-18 | 485.05 | 647.60 | 33.51% |
| Hero Motocorp Ltd | 29-Sep-20 | 3174.95 | 3355.50 | 5.69% |
| Hindustan Unilever Ltd. | 13-Nov-17 | 1290.70 | 2614.30 | 102.55% |
| Housing Development Finance Corp Ltd | 19-Dec-17 | 1720.00 | 2499.90 | 45.34% |
| ICICI Bank Ltd. | 06-Apr-18 | 278.65 | 552.20 | 98.17% |
| ICICI Lombard General Insurance | 19-Sep-19 | 1154.90 | 1440.40 | 24.72% |
| ICICI Prudential Life Insurance Company Ltd. | 28-Jun-18 | 375.80 | 537.30 | 42.97% |
| ICICI Securities Ltd | 24-Sep-20 | 466.65 | 484.40 | 3.80% |
| Indusindbnk | 08-Jun-20 | 451.00 | 712.00 | 57.87% |
| Infosys Ltd. | 17-Aug-17 | 487.60 | 1146.55 | 135.14% |
| Ipca Lab | 11-Aug-20 | 2099.00 | 2267.95 | 8.05% |
| JK Cement | 19-Jun-20 | 1378.00 | 1724.80 | 25.17% |
| JK Lakshmi Cement | 03-Jul-20 | 276.00 | 306.95 | 11.21% |
| Jyoti lab | 05-Aug-20 | 132.90 | 158.50 | 19.26% |
| Justdial | 07-Oct-20 | 385.60 | 448.00 | 16.18% |

Guru Call: From the expert's desk

| Company | Reco Date | Reco Price (Buy on dips) | High till date | Return% |
|--------------------------------|-----------|--------------------------|----------------|---------|
| Kansai Nerolac Paints | 16-Dec-19 | 529.85 | 551.00 | 3.99% |
| Kotak Mahindra Bank Ltd | 10-Nov-16 | 822.10 | 1740.00 | 111.65% |
| Mahanagar Gas | 15-Nov-19 | 1029.00 | 1246.20 | 21.11% |
| Mahindra & Mahindra Ltd. | 05-Jun-17 | 709.25 | 993.00 | 40.01% |
| Manappuram Finance Ltd. | 24-Apr-18 | 119.20 | 194.80 | 63.42% |
| Marico Ltd. | 04-Apr-18 | 325.00 | 404.00 | 24.31% |
| Nam-India | 25-Nov-18 | 377.00 | 452.90 | 20.13% |
| Nestle India Ltd. | 27-Sep-18 | 9729.40 | 18369.95 | 88.81% |
| Oberoi Realty Ltd. | 23-Nov-17 | 508.60 | 641.70 | 26.17% |
| PEL | 02-Sep-20 | 1246.25 | 1360.45 | 9.16% |
| Pfizer | 22-Jul-20 | 4150.00 | 5239.00 | 26.24% |
| Phoenix Mills Limited | 07-Jul-19 | 655.15 | 979.00 | 49.43% |
| PI Industries | 17-Sep-20 | 2012.10 | 2070 | 2.87% |
| Pidilite Industries Limited | 04-Oct-16 | 681.60 | 1661.00 | 143.69% |
| Raymond | 25-Sep-20 | 263.55 | 293.00 | 11.17% |
| RBL Bank | 25-Sep-20 | 164.95 | 185.00 | 12.16% |
| Reliance | 22-Apr-20 | 1351.00 | 2369.35 | 75.38% |
| Rites Ltd. | 19-Dec-18 | 226.96 | 331.00 | 45.84% |
| SBI Card | 16-Jul-20 | 719.00 | 868.00 | 20.72% |
| SBI Life | 20-May-20 | 715.00 | 895.00 | 20.11% |
| Solara | 25-Sep-20 | 954.90 | 1255.00 | 31.43% |
| Sun Pharma | 07-Aug-20 | 525.00 | 564.75 | 7.57% |
| Syngene | 24-Sep-20 | 565.70 | 588.00 | 3.94% |
| Tata Chemicals Limited | 24-Dec-19 | 296.89 | 345.90 | 16.51% |
| Tata Consultancy Services Ltd. | 08-Jan-18 | 1344.60 | 2885.00 | 114.56% |
| Tata Consumer | 29-Jun-17 | 149.15 | 591.95 | 296.88% |
| Torent Pharma | 04-Aug-20 | 2727.95 | 2934.00 | 7.55% |
| Trent Ltd. | 19-Dec-18 | 348.40 | 804.07 | 130.97% |
| Ultratech Cement Ltd. | 19-Dec-18 | 4084.60 | 4904.95 | 20.08% |
| Voltas Ltd. | 27-Mar-18 | 613.90 | 741.00 | 20.70% |
| Whirlpool Of India Ltd. | 07-Dec-16 | 872.25 | 2555.00 | 192.92% |
| Zee Entertainment | 22-Nov-19 | 345.00 | 362.00 | 4.93% |

PCG PORTFOLIO

| Company | Reco Date | Reco Price (Buy on dips) | High till date | Return% |
|---|-----------|--------------------------|----------------|---------|
| Ajanta Pharma Ltd. | 16-Sep-20 | 1526.10 | 1655.80 | 8.50% |
| Alkem Laboratories Ltd. | 16-Sep-20 | 2823.80 | 2987.90 | 5.81% |
| Biocon Ltd. | 16-Sep-20 | 438.65 | 478.00 | 8.97% |
| Cipla Ltd. | 16-Sep-20 | 752.60 | 829.00 | 10.15% |
| Fine Organic Industries Ltd. | 16-Sep-20 | 3070.95 | 3095.95 | 0.81% |
| Hatsun Agro Products Ltd. | 16-Sep-20 | 840.15 | 868.00 | 3.31% |
| P I Industries Ltd. | 16-Sep-20 | 2052.80 | 2080.00 | 1.33% |
| Reliance Industries Ltd. | 16-Sep-20 | 2324.55 | 2336.00 | 0.49% |
| Infosys Ltd. | 18-Sep-20 | 1002.15 | 1154.30 | 15.18% |
| Central Depository Services (India) Ltd | 23-Sep-20 | 479.60 | 506.00 | 5.50% |
| Larsen & Toubro Infotech Ltd | 23-Sep-20 | 2448.45 | 3512.70 | 43.47% |
| Divi's Laboratories Ltd | 28-Sep-20 | 3097.15 | 3269.90 | 5.58% |
| Poly Medicure Ltd | 28-Sep-20 | 458.10 | 508.80 | 11.07% |
| Coromandel International Ltd | 29-Sep-20 | 793.25 | 801.90 | 1.09% |
| Coforge Ltd | 01-Oct-20 | 2335.80 | 2760.00 | 18.16% |
| Tata Consultancy Services Ltd | 05-Oct-20 | 2705.80 | 2885.00 | 6.62% |
| -- | -- | -- | -- | -- |
| -- | -- | -- | -- | -- |
| -- | -- | -- | -- | -- |
| -- | -- | -- | -- | -- |

Weekly Expiry Most Active Nifty Call Option

| Symbol | Expiry Date | Strike Price | Highest Open Interest (OI) |
|--------|-------------|--------------|----------------------------|
| NIFTY | 10-Dec-2020 | 13500 | 2,613,675 |
| NIFTY | 10-Dec-2020 | 13200 | 2,155,125 |
| NIFTY | 10-Dec-2020 | 13300 | 2,083,950 |

Weekly Expiry Most Active Nifty Put Option

| Symbol | Expiry Date | Strike Price | Highest Open Interest (OI) |
|--------|-------------|--------------|----------------------------|
| NIFTY | 10-Dec-2020 | 13100 | 3,035,550 |
| NIFTY | 10-Dec-2020 | 13200 | 3,024,000 |
| NIFTY | 10-Dec-2020 | 13000 | 2,752,725 |

NIFTY 50 STOCKS BELOW 200SMA

| SCRIP NAME | SMA 200 | CLOSING (04-12-2020) |
|------------|---------|----------------------|
| BHARTIARTL | 509.03 | 493.75 |
| COALINDIA | 134.68 | 133.3 |
| -- | -- | -- |
| -- | -- | -- |
| -- | -- | -- |
| -- | -- | -- |
| -- | -- | -- |
| -- | -- | -- |

Securities in Ban For Trade Date 07-12-2020

CANBK

Bulk Deals (NSE)

| Deal Date | Scrip Name | Client Name | Deal Type | Quantity | Price |
|-----------|------------|---------------------------|-----------|----------|--------|
| 4-Dec-20 | ADFFOODS | INFINITY HOLDINGS | BUY | 400000 | 501.20 |
| 4-Dec-20 | TATACHEM | TATA SONS PRIVATE LIMITED | BUY | 2571651 | 471.88 |
| 4-Dec-20 | ADFFOODS | DANGI ALPANA SANJAY | SELL | 200000 | 501.20 |

Bulk Deals (BSE)

| Deal Date | Scrip Name | Client Name | Deal Type | Quantity | Price |
|-----------|------------|---|-----------|----------|--------|
| 4-Dec-20 | IMPAL | PARI WASHINGTON INVESTMENT FUND | B | 43399 | 521.00 |
| 4-Dec-20 | IMPAL | PARI WASHINGTON INDIA MASTER FUND, LTD. | S | 43399 | 521.00 |

 Note- Executed on 04th Dec 2020. Bulk Deal Buy/Sell done by fund house is considered

| Research Analyst Registration No. | Contact | Website | mail Id |
|-----------------------------------|-------------------------|--|--|
| INH000002764 | SMS: 'Arihant' to 56677 | www.arihantcapital.com | arihant.research@arihantcapital.com |

**Arihant is Forbes Asia’s ‘200 Best under a \$Billion’ Company
‘Best Emerging Commodities Broker’ awarded by UTV Bloomberg**

Disclaimer: This document has been prepared by Arihant Capital Markets Limited (hereinafter called as Arihant) and its subsidiaries and associated companies. This document does not constitute an offer or solicitation for the purchase and sale of any financial instrument by Arihant. Receipt and review of this document constitutes your agreement not to circulate, redistribute, retransmit or disclose to others the contents, opinions, conclusion, or information contained herein. This document has been prepared and issued on the basis of publicly available information, internally developed data and other sources believed to be reliable. Whilst meticulous care has been taken to ensure that the facts stated are accurate and opinions given are fair and reasonable, neither the analyst nor any employee of our company is in any way is responsible for its contents and nor is its accuracy or completeness guaranteed. This document is prepared for assistance only and is not intended to be and must not alone be taken as the basis for an investment decision. All recipients of this material should before dealing and or transacting in any of the products referred to in this material make their own investigation, seek appropriate professional advice. The investments discussed in this material may not be suitable for all investors. The recipient alone shall be fully responsible/are liable for any decision taken on the basis of this material. Arihant Capital Markets Ltd (including its affiliates) or its officers, directors, personnel and employees, including persons involved in the preparation or issuance of this material may; (a) from time to time, have positions in, and buy or sell or (b) be engaged in any other transaction and earn brokerage or other compensation in the financial instruments/products discussed herein or act as advisor or lender/borrower in respect of such securities/financial instruments/products or have other potential conflict of interest with respect to any recommendation and related information and opinions. The said persons may have acted upon and/or in a manner contradictory with the information contained here and may have a position or be otherwise interested in the investment referred to in this document before its publication. The user of this report assumes the entire risk of any use made of this data/report. Arihant especially states that it has no financial liability, whatsoever, to the users of this report.

Arihant Capital Markets Ltd

#1011 Solitaire Corporate Park Building No.10 1st Floor
 Andheri Ghatkopar Link Road Chakala Andheri (E) Mumbai-400093
 T. 022-42254800. Fax: 022-42254880
www.arihantcapital.com