

To join our research group on TELEGRAM, please click on the links - <https://bit.ly/37T17JR> and <https://bit.ly/2svtU7k>

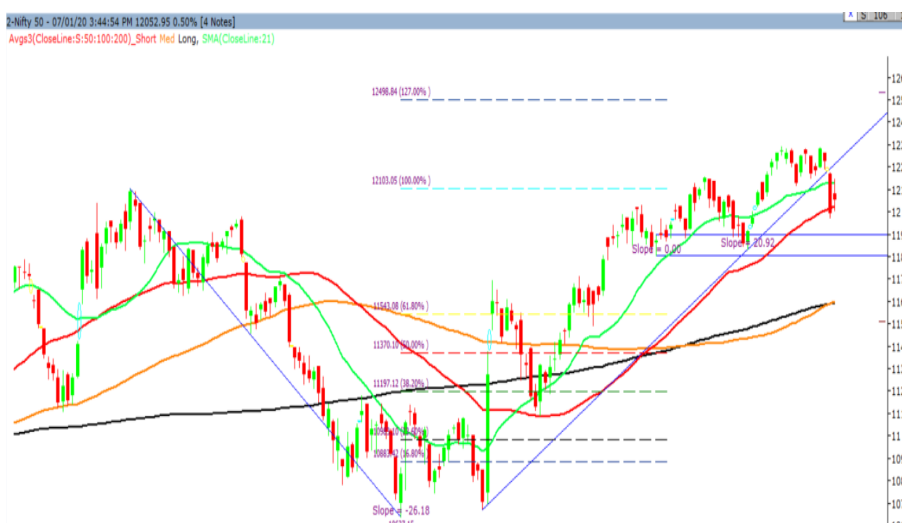
Tuesday, 07th January, 2020

Indian Indices	Last Price	(%) Chg
BSE	40869.47	0.47
NSE	12052.95	0.50
World Indices		
Dow Jones	28583.68	-0.42
Nasdaq	9068.58	-0.03
Nikkei	23114.64	-1.96
Hang Seng	28105.37	-0.77
FTSE	7573.85	-0.02
Commodity	Last Price	(%) Chg
GOLD(\$/ounce)	1587.80	0.86
Silver (\$/Ounce)	18.57	0.96
Crude (\$/BBL)	69.34	1.57
Aluminium spot (\$/mt)	1821.25	0.14
Copper SPOT (\$/mt)	6180.25	0.17
Lead Spot (\$/MT)	2356.00	0.14
Natural gas \$/MMBtu	2.15	-0.56
Currency	Last Price	(%) Chg
USD-INR	71.98	-0.18
EUR-INR	80.53	-0.41
Bond	Last Price	(%) Chg
India 10 Yr Bond yield	6.55	-0.21

52 Wk High (A group)			52 Wk Low (A group)		
Company	Close Price	52 Wk High	Company	Close Price	52 Wk Low
BALRAM	185	194	INDIANB	99.6	98.2
EIDPARR	229	234	--	--	--
GMRINF	23.3	23.7	--	--	--
INFIBEA	54.8	58.2	--	--	--
JUBLFOOD	1691	1701	--	--	--

Source: BSE

Market Technical Outlook



Nifty opened higher traded in a narrow range with positive bias to close in green. On the daily chart we are observing that prices have managed to closed above the 50-daysMA (12023) and formed an inside day formation. This suggests that the prior downtrend is losing breath. At present the daily trend is down and would reverse only if Nifty trades above 12125 levels. Hence, cautious approach should be adopted going forward.

In coming trading session if Nifty for first hour trades in the range of 12086 - 12108 then go short, with a stop loss of 12125 for a target of 12017 – 11995 - 11961 levels.

News for stocks

Equitas Holdings	Equitas Bank has waived off non-maintenance charges on all savings accounts along with offering lower transaction charges to customers.
--	--

Foreign Institutional Investments (FII's) Activities

Name of Segment	Net Buyer/seller	Rs In Cr
Index Futures	Net Buy	1391.65
Stock Futures	Net Buy	547.34
Net Future Position	Net Buy	1938.99
Index Options	Net Buy	875.65
Stock Options	Net Buy	79.30
Net Options Position	Net Buy	954.95
FII In cash Segment	Net Sell	-682.23
DII In cash Segment	Net Buy	311.19
Net Cash Position	Net Sell	-371.04

Technical Levels for Nifty 50 Companies

Company	Closing 07-01-2020	Buy/Sell Trigger	Resistance 1	Resistance 2	Support 1	Support 2
ADANI PORTS	384.80	385.65	388.90	393.00	381.55	378.30
ASIAN PAINT	1724.40	1725.30	1739.60	1754.80	1710.10	1695.80
AXIS BANK	725.75	728.27	735.48	745.22	718.53	711.32
BAJAJ-AUTO	3037.95	3046.68	3063.27	3088.58	3021.37	3004.78
BAJAJ FINSV	9095.65	9141.90	9218.75	9341.85	9018.80	8941.95
BAJ FINANCE	4007.65	4031.95	4067.70	4127.75	3971.90	3936.15
BHARTIARTL	445.10	447.83	452.57	460.03	440.37	435.63
BPCL	461.00	465.20	470.55	480.10	455.65	450.30
BRITANNIA	3036.60	3039.53	3051.07	3065.53	3025.07	3013.53
CIPLA	468.60	467.42	471.18	473.77	464.83	461.07
COALINDIA	205.70	206.08	207.82	209.93	203.97	202.23
DRREDDY	2884.20	2888.42	2905.78	2927.37	2866.83	2849.47
EICHER MOT	20803.80	20955.80	21197.80	21591.80	20561.80	20319.80
GAIL	124.45	124.78	125.72	126.98	123.52	122.58
GRASIM	742.30	744.60	753.70	765.10	733.20	724.10
HCLTECH	584.25	583.68	588.32	592.38	579.62	574.98
HDFC	2415.05	2408.02	2435.83	2456.62	2387.23	2359.42
HDFC BANK	1260.60	1261.43	1270.62	1280.63	1251.42	1242.23
HEROMOTOCO	2348.05	2361.65	2386.30	2424.55	2323.40	2298.75
HINDALCO	208.85	209.92	212.13	215.42	206.63	204.42
HINDUNILVR	1920.70	1923.23	1928.47	1936.23	1915.47	1910.23
ICICI BANK	522.90	526.72	531.78	540.67	517.83	512.77
INDUSINDBK	1461.65	1470.62	1499.03	1536.42	1433.23	1404.82
INFRA TEL	238.25	240.77	244.38	250.52	234.63	231.02
INFY	727.90	731.87	738.63	749.37	721.13	714.37
IOC	124.55	125.37	126.63	128.72	123.28	122.02
ITC	235.35	235.95	237.30	239.25	234.00	232.65
JSW STEEL	265.25	266.17	269.23	273.22	262.18	259.12
KOTAK BANK	1670.85	1665.33	1680.27	1689.68	1655.92	1640.98
LT	1320.50	1324.58	1335.42	1350.33	1309.67	1298.83
M&M	526.65	527.23	531.42	536.18	522.47	518.28
MARUTI	7073.60	7088.53	7150.67	7227.73	7011.47	6949.33
NESTLE IND	14290.75	14366.12	14471.38	14652.02	14185.48	14080.22
NTPC	120.55	120.45	121.65	122.75	119.35	118.15
ONGC	125.75	126.28	127.17	128.58	124.87	123.98
POWERGRID	191.70	192.45	193.75	195.80	190.40	189.10
RELIANCE	1524.60	1524.20	1534.90	1545.20	1513.90	1503.20
SBIN	318.40	320.27	325.13	331.87	313.53	308.67
SUN PHARMA	446.40	443.98	450.42	454.43	439.97	433.53
TATAMOTORS	184.70	185.47	188.63	192.57	181.53	178.37
TATA STEEL	476.10	478.08	482.62	489.13	471.57	467.03
TCS	2205.85	2201.43	2219.07	2232.28	2188.22	2170.58
TECHM	777.10	772.07	783.53	789.97	765.63	754.17
TITAN	1159.95	1161.95	1171.85	1183.75	1150.05	1140.15
ULTRACEMCO	4242.10	4220.05	4276.05	4310.00	4186.10	4130.10
UPL	595.05	594.03	605.02	614.98	584.07	573.08
VEDL	156.00	155.12	157.68	159.37	153.43	150.87
WIPRO	255.20	253.92	257.63	260.07	251.48	247.77
YES BANK	45.05	45.13	46.32	47.58	43.87	42.68
ZEEL	267.75	267.48	271.62	275.48	263.62	259.48

(Source – IRIS)

Guru Call: From the expert's desk

Company	Reco Date	Reco Price (Buy on dips)	High till date	Return%
Aditiya Birla Capital	22-Nov-19	95.75	114.60	19.69%
Asian Paints Ltd.	30-Mar-17	1068.10	1834.80	71.78%
Avenue Supermarts Ltd.	31-Jul-17	898.55	2010.00	123.69%
Axis Bank Ltd.	10-Apr-18	519.30	827.75	59.40%
Bajaj Finance Ltd.	11-Oct-18	2271.00	4295.75	89.16%
Bajaj Finserv Ltd	1-Nov-16	3416.80	9530.95	178.94%
Bajaj Holdings And Investment Ltd	19-May-16	1499.10	3903.95	160.42%
Bandhan Bank Ltd.	19-Dec-18	556.40	650.00	16.82%
Bharat Petroleum Corporation Ltd.	23-Oct-19	531.50	549.00	3.29%
Century Textile and Industries Ltd	25-Nov-16	326.00	515.10	58.01%
Cipla Ltd	20-Mar-17	597.30	678.45	13.59%
Colgate Palmolive	16-Sep-19	1314.00	1642.60	25.01%
Container Corporation	22-Nov-19	577.00	603.00	4.51%
Dabur India	22-Oct-19	466.00	487.70	4.66%
DLF Ltd	10-Apr-19	194.30	235.15	21.02%
Emami Limited	26-Jun-19	290.35	355.40	22.40%
Godrej Industries Ltd.	12-Feb-18	550.70	657.60	19.41%
Godrej Properties Ltd.	19-Dec-18	685.30	1119.60	63.37%
Grasim Industries Ltd.	31-May-17	1132.50	1331.00	17.53%
Havells India Ltd.	8-Dec-17	525.75	806.85	53.47%
Housing Development Finance Corp Ltd	19-Dec-17	1720.00	2472.75	43.76%
HDFC Asset Management Company Ltd.	19-Dec-18	1572.90	3844.00	144.39%
HDFC Bank Limited	10-Nov-16	639.00	1305.50	104.30%
HDFC Life Insurance Co Ltd	19-Jan-18	485.05	646.40	33.26%
Hindustan Unilever Ltd.	13-Nov-17	1290.70	2190.00	69.68%
ICICI Bank Ltd.	6-Apr-18	278.65	552.20	98.17%
ICICI Prudential Life Insurance Company Ltd.	28-Jun-18	375.80	537.30	42.97%
ICICI Lombard General Insurance	19-Sep-19	1154.90	1440.40	24.72%
Infosys Ltd.	17-Aug-17	487.60	847.00	73.71%
Kansai Nerolac Paints	16-Dec-19	529.85	551.00	3.99%
Kotak Mahindra Bank Ltd	10-Nov-16	822.10	1734.80	111.02%
Mahindra & Mahindra Ltd.	5-Jun-17	709.25	993.00	40.01%
Manappuram Finance Ltd.	24-Apr-18	119.20	181.50	52.27%
Mahanagar Gas	15-Nov-19	1029.00	1089.00	5.83%
Marico Ltd.	4-Apr-18	325.00	404.00	24.31%
Nestle India Ltd.	27-Sep-18	9729.40	15146.90	55.68%
Oberoi Realty Ltd.	23-Nov-17	508.60	641.70	26.17%
Phoenix Mills Limited	7-Jul-19	655.15	872.00	33.10%
Pidilite Industries Limited	4-Oct-16	681.60	1493.50	119.12%
Prestige Estates Projects Limited	6-Jun-19	286.70	365.80	27.59%
Reliance Nippon	25-Nov-18	377.00	386.40	2.49%
Rites Ltd.	19-Dec-18	226.96	324.80	43.11%
RBL Bank	22-Nov-19	334.00	391.20	17.13%
State Bank Of India	28-Aug-18	308.00	373.80	21.36%
Shipping Corporation	22-Nov-19	64.00	65.95	3.05%
Tata Chemicals Limited	24-Dec-19	682.80	692.00	1.35%
Tata Global Beverages Ltd.	29-Jun-17	149.15	330.05	121.29%
Tata Consultancy Services Ltd.	8-Jan-18	1344.60	2296.20	70.77%
Trent Ltd.	19-Dec-18	348.40	567.90	63.00%
Ultratech Cement Ltd.	19-Dec-18	4084.60	4904.95	20.08%
Voltas Ltd.	27-Mar-18	613.90	725.40	18.16%
Whirlpool Of India Ltd.	7-Dec-16	872.25	2498.00	186.39%
Zee Entertainment	22-Nov-19	345.00	362.00	4.93%

NIFTY 50 STOCKS BELOW 200SMA

SCRIP NAME	SMA 200	CLOSING (07-01-2020)
INFY	745.13	729.30
WIPRO	262.58	255.00
ZEEL	337.08	267.60
LT	1401.66	1321.15
ITC	266.39	235.50
GRASIM	804.27	742.30
CIPLA	504.08	468.80
M&M	592.16	526.65
HEROMOTOCO	2578.22	2353.70
IOC	142.87	124.80
AXISBANK	734.44	726.65
ONGC	145.32	125.75
TITAN	1175.01	1159.70
VEDL	157.65	156.20
UPL	601.93	595.00
GAIL	143.93	124.20
INDUSINDBK	1479.76	1458.05
ADANIPTS	386.40	384.00
POWERGRID	196.87	191.40
ULTRACEMCO	4264.86	4242.15
NTPC	125.44	120.50
YESBANK	109.68	45.05
COALINDIA	219.66	205.70
INFRATEL	262.70	238.35

Weekly Expiry Most Active Nifty Call Option

Symbol	Expiry Date	Strike Price	Highest Open Interest (OI)
NIFTY	09-Jan-19	12200	2932200
NIFTY	09-Jan-19	12300	2772825
NIFTY	09-Jan-19	12100	2454375

Weekly Expiry Most Active Nifty Put Option

Symbol	Expiry Date	Strike Price	Highest Open Interest (OI)
NIFTY	09-Jan-19	12000	2691525
NIFTY	09-Jan-19	11900	1560675
NIFTY	09-Jan-19	12100	1317825

Bulk Deals (BSE)

N/A

Bulk Deals (NSE)

N/A

 Note- Executed on 07th Jan 2020. Bulk Deal Buy/Sell done by fund house is considered.

Securities in Ban For Trade Date 08-01-2020

YESBANK

Research Analyst Registration No.	Contact	Website	mail Id
INH000002764	SMS: 'Arihant' to 56677	www.arihantcapital.com	arihant.research@arihantcapital.com

**Arihant is Forbes Asia's '200 Best under a \$Billion' Company
'Best Emerging Commodities Broker' awarded by UTV Bloomberg**

Disclaimer: This document has been prepared by Arihant Capital Markets Limited (hereinafter called as Arihant) and its subsidiaries and associated companies. This document does not constitute an offer or solicitation for the purchase and sale of any financial instrument by Arihant. Receipt and review of this document constitutes your agreement not to circulate, redistribute, retransmit or disclose to others the contents, opinions, conclusion, or information contained herein. This document has been prepared and issued on the basis of publicly available information, internally developed data and other sources believed to be reliable. Whilst meticulous care has been taken to ensure that the facts stated are accurate and opinions given are fair and reasonable, neither the analyst nor any employee of our company is in any way is responsible for its contents and nor is its accuracy or completeness guaranteed. This document is prepared for assistance only and is not intended to be and must not alone be taken as the basis for an investment decision. All recipients of this material should before dealing and or transacting in any of the products referred to in this material make their own investigation, seek appropriate professional advice. The investments discussed in this material may not be suitable for all investors. The recipient alone shall be fully responsible/are liable for any decision taken on the basis of this material. Arihant Capital Markets Ltd (including its affiliates) or its officers, directors, personnel and employees, including persons involved in the preparation or issuance of this material may; (a) from time to time, have positions in, and buy or sell or (b) be engaged in any other transaction and earn brokerage or other compensation in the financial instruments/products discussed herein or act as advisor or lender/borrower in respect of such securities/financial instruments/products or have other potential conflict of interest with respect to any recommendation and related information and opinions. The said persons may have acted upon and/or in a manner contradictory with the information contained here and may have a position or be otherwise interested in the investment referred to in this document before its publication. The user of this report assumes the entire risk of any use made of this data/report. Arihant especially states that it has no financial liability, whatsoever, to the users of this report.

Arihant Capital Markets Ltd

#1011 Solitaire Corporate Park Building No.10 1st Floor
 Andheri Ghatkopar Link Road Chakala Andheri (E) Mumbai-400093
 T. 022-42254800. Fax: 022-42254880
www.arihantcapital.com