

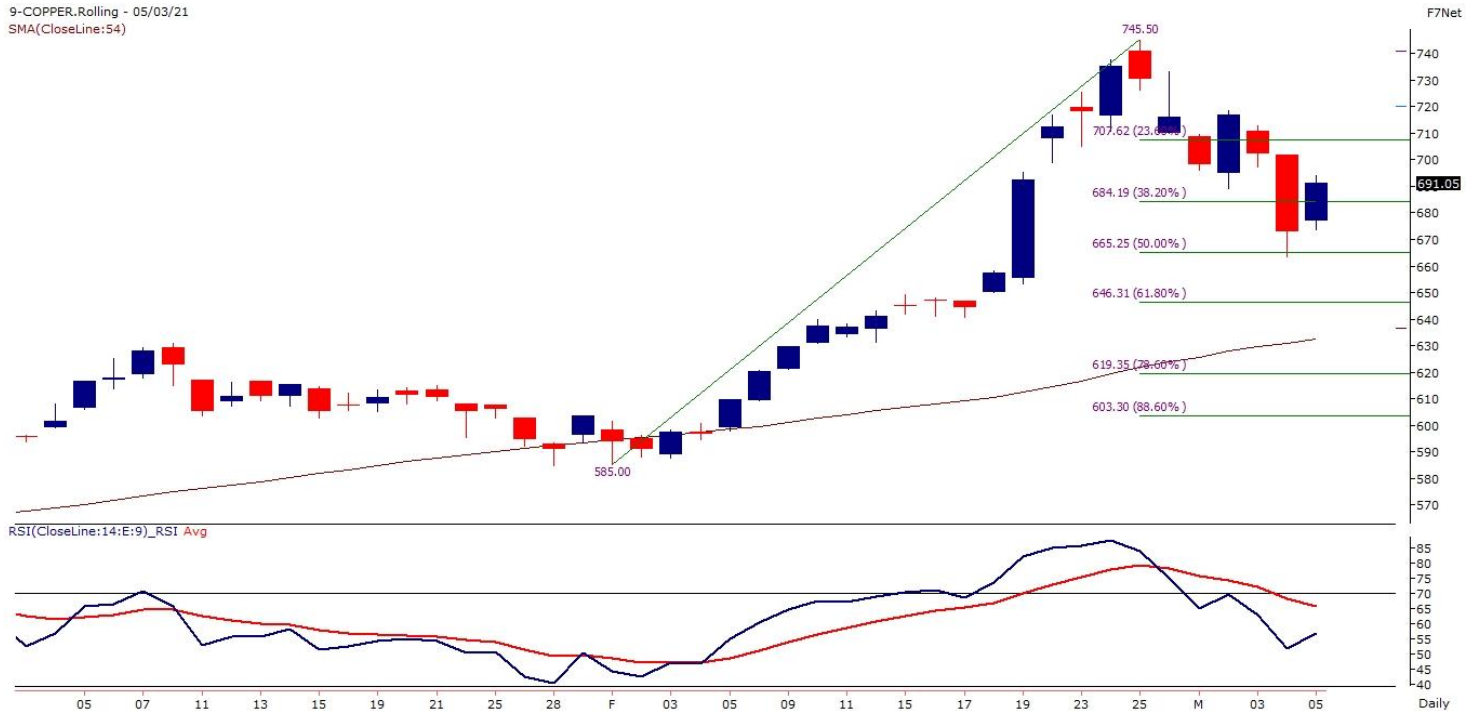
Copper futures rise on fresh bets:

Copper futures finished higher on Friday bolstered by some bargain hunting at the prevailing lower rates. However, gains remained trimmed on firmer dollar and peaking bond yields. The red metal for the most active contract fell around 5% for the week.

Copper futures for May delivery rose by \$0.970 to settle at \$ 4.0755 a pound on the Comex metals division of New York Mercantile Exchange. Copper on the London Metal Exchange was down 0.13% or \$ 12 at \$ 8,895.50 a ton.

(Source: <http://www.wealthdiscovery.in/>)

9-COPPER.Rolling - 05/03/21
SMA(CloseLine:54)



Technical outlook:

MCX COPPER (MAR) future prices formed an "Inside Bar" Candlestick pattern on the Daily chart. The last session ended on a positive note after taken a reversal from the 50% Fibonacci level near 665. The market is expected to continue the Bullish momentum, once the prices break and sustain above the resistance holding at 694 then the upside rally could test 700-708 in the upcoming trading sessions. Alternatively, if the prices close below 670 then the downside rally may continue for the target of 660-645. Key support holds at 670.

@ Futures	Expiry Date	Quotation/ Base Value	Close	WoW % change	52 wk H/L	S2	S1	Pivot	R1	R2	Trend
MCXBULLDEX	24-Mar-21	INDEX	14150	-3.06%	16251/14020	13545	13847	14324	14626	15103	DOWN
MCXMETLDEX	22-Mar-21	INDEX	14049	-5.16%	15457/13242	12878	13463	14239	14824	15600	DOWN
GOLD	05-Apr-21	10 GM	44640	-2.46%	51875/44217	43077	43858	44999	45780	46921	DOWN
SILVER	05-May-21	1 KG	65717	-4.46%	75500/64733	61825	63773	66822	68770	71819	DOWN
CRUDE OIL	19-Mar-21	Rs/bbl	4858	5.54%	4674/3457	4203	4531	4697	5025	5191	UP
NG	26-Mar-21	Rs/mmBtu	197	-4.18%	240/176	186	192	201	207	216	MODERATE
COPPER	31-Mar-21	1 KG	690	-1.89%	737/585	635	662	691	718	747	DOWN
NICKEL	31-Mar-21	1 KG	1192	-13.04%	1457/1158	1025	1109	1241	1325	1457	DOWN
LEAD	31-Mar-21	1 KG	163	-3.71%	181/155	156	159	166	169	176	DOWN
ZINC	31-Mar-21	1 KG	218	-1.00%	234/203	204	211	218	225	232	DOWN
ALUMINIUM	31-Mar-21	1 KG	177	1.61%	179/160	165	170	175	180	185	MODERATE