

To join our research group on TELEGRAM, please click on the links - <https://bit.ly/37T17JR> and <https://bit.ly/2svtU7k>

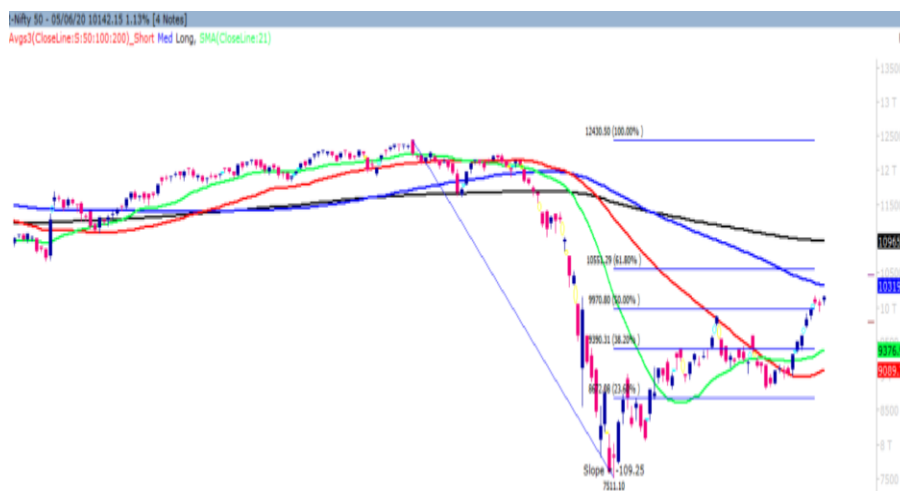
Monday, 08<sup>th</sup> Jun, 2020

Indian Indices	Last Price	(%) Chg
BSE	34287.24	0.90
NSE	10142.15	1.13
World Indices	Last Price	(%) Chg
Dow Jones	27110.98	3.15
Nasdaq	9814.08	2.06
Nikkei	23076.05	0.93
Hang Seng	24923.95	0.62
FTSE	6484.30	2.25
Commodity	Last Price	(%) Chg
GOLD(\$/ounce)	1689.80	0.40
Silver (\$/Ounce)	17.67	1.09
Crude (\$/BBL)	42.56	0.61
Aluminium spot (\$/mt)	1594.75	0.16
Copper SPOT (\$/mt)	5649.00	-0.21
Lead Spot (\$/MT)	1759.00	-0.20
Natural gas \$/MMBtu	1.78	-0.39
Currency	Last Price	(%) Chg
USD-INR	75.80	0.09
EUR-INR	85.93	1.32
Bond	Last Price	(%) Chg
India 10 Yr Bond yield	5.82	0.43

52 Wk High (A group)			52 Wk Low (A group)		
Company	Close Price	52 Wk High	Company	Close Price	52 Wk Low
BIOCON	389	400	RAJESHEX	486	469
CIPLA	651	669	--	--	--
LUPIN	902	923	--	--	--
RELIANCE	1580	1617	--	--	--
SUNPHAR	494	510	--	--	--

Source: BSE

### Market Technical Outlook



Nifty opened higher traded in a narrow range with positive bias throughout the day to close in green. On the daily chart, we are observing that prices are rising with volumes and even the momentum indicator the RSI is gaining strength. This suggests that the upside momentum is likely to continue. In coming trading session if Nifty trades 10180 then it may test 10250 – 10334 levels. On the downside, 10040 – 9990 levels may act as support for the day.

**At present the undertone in the market is positive and there is high probability that Nifty may test 10380 – 10500 levels in couple of weeks. Hence, one needs to adopt cautiously positive approach at current level as stock specific activity is likely to continue.**

### News for stocks

--	--
--	--

### Foreign Institutional Investments (FII's) Activities

Name of Segment	Net Buyer/seller	Rs In Cr
Index Futures	Net Sell	-345.09
Stock Futures	Net Buy	454.82
<b>Net Future Position</b>	<b>Net Buy</b>	<b>109.73</b>
Index Options	Net Buy	661.68
Stock Options	Net Buy	27.11
<b>Net Options Position</b>	<b>Net Buy</b>	<b>688.79</b>
FII In cash Segment	Net Buy	97.61
DII In cash Segment	Net Buy	47.29
<b>Net Cash Position</b>	<b>Net Buy</b>	<b>144.90</b>

**Technical Levels for Nifty 50 Companies**

Company	Closing 05-06-2020	Buy/Sell Trigger	Resistance 1	Resistance 2	Support 1	Support 2
ADANI PORTS	341.15	341.83	346.47	351.78	336.52	331.88
ASIAN PAINT	1638.55	1639.63	1658.27	1677.98	1619.92	1601.28
AXIS BANK	405.30	401.90	413.30	421.30	393.90	382.50
BAJAJ-AUTO	2776.30	2793.73	2825.47	2874.63	2744.57	2712.83
BAJAJ FINSV	5236.40	5205.88	5315.52	5394.63	5126.77	5017.13
BAJAJ FINANCE	2390.35	2358.12	2441.23	2492.12	2307.23	2224.12
BHARTIARTL	584.35	580.60	593.75	603.15	571.20	558.05
BPCL	369.60	364.77	377.33	385.07	357.03	344.47
BRITANNIA	3466.70	3455.62	3509.03	3551.37	3413.28	3359.87
CIPLA	650.90	656.55	664.10	677.30	643.35	635.80
COALINDIA	144.85	143.70	146.90	148.95	141.65	138.45
DRREDDY	4024.90	4022.40	4052.50	4080.10	3994.80	3964.70
EICHERMOT	17495.35	17475.15	17640.20	17785.05	17330.30	17165.25
GAIL	97.85	97.60	98.70	99.55	96.75	95.65
GRASIM	627.15	622.45	635.40	643.65	614.20	601.25
HCLTECH	575.95	578.53	584.57	593.18	569.92	563.88
HDFC	1766.60	1765.38	1790.17	1813.73	1741.82	1717.03
HDFC BANK	1033.35	1026.18	1049.57	1065.78	1009.97	986.58
HEROMOTOCO	2340.65	2337.53	2367.07	2393.48	2311.12	2281.58
HINDALCO	149.25	147.88	152.37	155.48	144.77	140.28
HINDUNILVR	2087.60	2100.20	2115.40	2143.20	2072.40	2057.20
ICICIBANK	357.20	354.73	362.47	367.73	349.47	341.73
INDUSINDBK	422.35	420.28	429.37	436.38	413.27	404.18
INFRA TEL	236.25	232.98	242.97	249.68	226.27	216.28
INFY	703.55	705.28	709.97	716.38	698.87	694.18
IOC	89.40	88.55	90.90	92.40	87.05	84.70
ITC	200.00	200.22	201.78	203.57	198.43	196.87
JSW STEEL	197.05	197.83	201.62	206.18	193.27	189.48
KOTAK BANK	1337.80	1338.93	1356.87	1375.93	1319.87	1301.93
LT	955.25	950.58	964.57	973.88	941.27	927.28
M&M	484.20	483.02	490.63	497.07	476.58	468.97
MARUTI	5746.20	5734.10	5797.10	5848.00	5683.20	5620.20
NESTLE IND	17096.85	17171.13	17385.71	17674.58	16882.27	16667.68
NTPC	97.95	96.77	99.38	100.82	95.33	92.72
ONGC	86.95	86.92	88.83	90.72	85.03	83.12
POWERGRID	171.45	170.10	175.65	179.85	165.90	160.35
RELIANCE	1581.70	1591.13	1608.57	1635.43	1564.27	1546.83
SBIN	187.80	184.53	193.07	198.33	179.27	170.73
SHREECEM	22089.60	22006.53	22513.07	22936.53	21583.07	21076.53
SUN PHARMA	494.25	499.15	506.10	517.95	487.30	480.35
TATAMOTORS	110.75	107.42	115.78	120.82	102.38	94.02
TATA STEEL	338.95	335.88	346.72	354.48	328.12	317.28
TCS	2048.25	2062.18	2084.07	2119.88	2026.37	2004.48
TECHM	579.85	582.80	590.60	601.35	572.05	564.25
TITAN	990.95	984.32	1001.63	1012.32	973.63	956.32
ULTRACEMCO	3869.55	3867.68	3930.37	3991.18	3806.87	3744.18
UPL	439.40	436.30	449.05	458.70	426.65	413.90
VEDL	105.30	104.82	106.73	108.17	103.38	101.47
WIPRO	218.75	218.00	221.00	223.25	215.75	212.75
ZEEL	206.20	206.33	210.32	214.43	202.22	198.23

(Source – IRIS)

**Guru Call: From the expert's desk**

Company	Reco Date	Reco Price (Buy on dips)	High till date	Return%
Aditiya Birla Capital	22-Nov-19	95.75	115.35	20.47%
Asian Paints Ltd.	30-Mar-17	1068.10	1916.70	79.45%
Avenue Supermarts Ltd.	31-Jul-17	898.55	2560.00	184.90%
Axis Bank Ltd.	10-Apr-18	519.30	827.75	59.40%
Bajaj Finance Ltd.	11-Oct-18	2271.00	4923.40	116.79%
Bajaj Finserv Ltd	1-Nov-16	3416.80	9950.00	191.21%
Bajaj Holdings And Investment Ltd	19-May-16	1499.10	3950.00	163.49%
Bandhan Bank Ltd.	19-Dec-18	556.40	650.00	16.82%
Bharat Petroleum Corporation Ltd.	23-Oct-19	531.50	549.00	3.29%
Century Textile and Industries Ltd	25-Nov-16	326.00	656.90	101.50%
Cipla Ltd	20-Mar-17	597.30	678.45	13.59%
Colgate Palmolive	16-Sep-19	1314.00	1642.60	25.01%
Container Corporation	22-Nov-19	577.00	603.00	4.51%
Dabur India	22-Oct-19	466.00	525.00	12.66%
DLF Ltd	10-Apr-19	194.30	265.90	36.85%
Emami Limited	26-Jun-19	290.35	357.70	23.20%
Godrej Industries Ltd.	12-Feb-18	550.70	657.60	19.41%
Godrej Properties Ltd.	19-Dec-18	685.30	1189.25	73.54%
Grasim Industries Ltd.	31-May-17	1132.50	1331.00	17.53%
Havells India Ltd.	8-Dec-17	525.75	806.85	53.47%
Housing Development Finance Corp Ltd	19-Dec-17	1720.00	2499.90	45.34%
HDFC Asset Management Company Ltd.	19-Dec-18	1572.90	3844.00	144.39%
HDFC Bank Limited	10-Nov-16	639.00	1305.50	104.30%
HDFC Life Insurance Co Ltd	19-Jan-18	485.05	646.40	33.26%
Hindustan Unilever Ltd.	13-Nov-17	1290.70	2308.20	78.83%
ICICI Bank Ltd.	6-Apr-18	278.65	552.20	98.17%
ICICI Prudential Life Insurance Company Ltd.	28-Jun-18	375.80	537.30	42.97%
ICICI Lombard General Insurance	19-Sep-19	1154.90	1440.40	24.72%
Infosys Ltd.	17-Aug-17	487.60	847.00	73.71%
Kansai Nerolac Paints	16-Dec-19	529.85	551.00	3.99%
Kotak Mahindra Bank Ltd	10-Nov-16	822.10	1740.00	111.65%
Mahindra & Mahindra Ltd.	5-Jun-17	709.25	993.00	40.01%
Manappuram Finance Ltd.	24-Apr-18	119.20	194.80	63.42%
Mahanagar Gas	15-Nov-19	1029.00	1246.20	21.11%
Marico Ltd.	4-Apr-18	325.00	404.00	24.31%
Nestle India Ltd.	27-Sep-18	9729.40	16835.15	73.03%
Oberoi Realty Ltd.	23-Nov-17	508.60	641.70	26.17%
Phoenix Mills Limited	7-Jul-19	655.15	979.00	49.43%
Pidilite Industries Limited	4-Oct-16	681.60	1661.00	143.69%
Prestige Estates Projects Limited	6-Jun-19	286.70	426.00	48.59%
Nam-India	25-Nov-18	377.00	452.90	20.13%
Rites Ltd.	19-Dec-18	226.96	331.00	45.84%
RBL Bank	22-Nov-19	334.00	391.20	17.13%
State Bank Of India	28-Aug-18	308.00	373.80	21.36%
Shipping Corporation	22-Nov-19	64.00	65.95	3.05%
Tata Chemicals Limited	24-Dec-19	296.89	339.70	14.42%
Tata Consumer	29-Jun-17	149.15	408.00	173.55%
Tata Consultancy Services Ltd.	8-Jan-18	1344.60	2296.20	70.77%
Trent Ltd.	19-Dec-18	348.40	794.00	127.90%
Ultratech Cement Ltd.	19-Dec-18	4084.60	4904.95	20.08%
Voltas Ltd.	27-Mar-18	613.90	741.00	20.70%
Whirlpool Of India Ltd.	7-Dec-16	872.25	2555.00	192.92%
Zee Entertainment	22-Nov-19	345.00	362.00	4.93%

**NIFTY 50 STOCKS BELOW 200SMA**

SCRIP NAME	SMA 200	CLOSING (05-06-2020)
INFY	724.86	703.55
WIPRO	229.49	218.75
ZEEL	247.18	206.20
LT	1205.65	955.25
ITC	219.60	200.00
TATASTEEL	370.12	338.95
SBIN	269.72	187.80
GRASIM	679.83	627.15
TATAMOTORS	132.77	110.75
M&M	494.44	484.20
HDFC	2079.99	1766.60
HINDALCO	170.86	149.25
BPCL	424.82	369.60
ICICIBANK	443.84	357.20
HDFCBANK	1132.63	1033.35
ASIANPAINT	1722.58	1638.55
IOC	113.98	89.40
AXISBANK	625.75	405.30
ONGC	109.24	86.95
TITAN	1120.77	990.95
VEDL	126.68	105.30
UPL	507.37	439.40
GAIL	113.38	97.85
EICHERMOT	18187.86	17495.35
INDUSINDBK	1094.26	422.35
BAJFINANCE	3565.36	2390.35
ADANI PORTS	349.95	341.15
POWERGRID	184.72	171.45
ULTRACEMCO	3995.71	3869.55
TCS	2059.61	2048.25
KOTAKBANK	1506.39	1337.80
TECHM	690.89	579.85
JSWSTEEL	225.12	197.05
NTPC	109.14	97.95
MARUTI	6369.69	5746.20
BAJAJ-AUTO	2860.79	2776.30
BAJAJFINSV	7641.68	5236.40
COALINDIA	178.17	144.85

**Weekly Expiry Most Active Nifty Call Option**

Symbol	Expiry Date	Strike Price	Highest Open Interest (OI)
NIFTY	11-Jun-2020	10500	1797300
NIFTY	11-Jun-2020	10300	1795650
NIFTY	11-Jun-2020	10200	1579425

**Weekly Expiry Most Active Nifty Put Option**

Symbol	Expiry Date	Strike Price	Highest Open Interest (OI)
NIFTY	11-Jun-2020	9800	1756650
NIFTY	11-Jun-2020	10000	1590825
NIFTY	11-Jun-2020	9500	1570650

**Securities in Ban For Trade Date 08-06-2020**

NCC, BHEL

**Bulk Deals (BSE)**

Deal Date	Scrip Name	Client Name	Deal Type	Quantity	Price
5-Jun-20	SEQUENT	AGNUS HOLDINGS PRIVATE LIMITED	B	12814935	86.95

**Bulk Deals (NSE)**

Deal Date	Scrip Name	Client Name	Deal Type	Quantity	Price
5-Jun-20	Ind Terrain Fashions Ltd	AMUNDI FUNDS EQUITY INDIA	SELL	263318	27.86
5-Jun-20	Pennar Industries Ltd	DSP BLACKROCK MUTUAL FUND	SELL	753027	16.17
5-Jun-20	PVR Limited	SYLEBRA CAPITAL PARTNERS MASTER FUND LTD.	BUY	599986	1,167.48

**Note- Executed on 05<sup>th</sup> Jun 2020. Bulk Deal Buy/Sell done by fund house is considered.**

**Research Analyst Registration No.**

INH000002764

**Contact**

SMS: 'Arihant' to 56677

**Website**
[www.arihantcapital.com](http://www.arihantcapital.com)
**mail Id**
[arihant.research@arihantcapital.com](mailto:arihant.research@arihantcapital.com)

**Arihant is Forbes Asia's '200 Best under a \$Billion' Company**  
**'Best Emerging Commodities Broker' awarded by UTV Bloomberg**

**Disclaimer:** This document has been prepared by Arihant Capital Markets Limited (hereinafter called as Arihant) and its subsidiaries and associated companies. This document does not constitute an offer or solicitation for the purchase and sale of any financial instrument by Arihant. Receipt and review of this document constitutes your agreement not to circulate, redistribute, retransmit or disclose to others the contents, opinions, conclusion, or information contained herein. This document has been prepared and issued on the basis of publicly available information, internally developed data and other sources believed to be reliable. Whilst meticulous care has been taken to ensure that the facts stated are accurate and opinions given are fair and reasonable, neither the analyst nor any employee of our company is in any way is responsible for its contents and nor is its accuracy or completeness guaranteed. This document is prepared for assistance only and is not intended to be and must not alone be taken as the basis for an investment decision. All recipients of this material should before dealing and or transacting in any of the products referred to in this material make their own investigation, seek appropriate professional advice. The investments discussed in this material may not be suitable for all investors. The recipient alone shall be fully responsible/are liable for any decision taken on the basis of this material. Arihant Capital Markets Ltd (including its affiliates) or its officers, directors, personnel and employees, including persons involved in the preparation or issuance of this material may; (a) from time to time, have positions in, and buy or sell or (b) be engaged in any other transaction and earn brokerage or other compensation in the financial instruments/products discussed herein or act as advisor or lender/borrower in respect of such securities/financial instruments/products or have other potential conflict of interest with respect to any recommendation and related information and opinions. The said persons may have acted upon and/or in a manner contradictory with the information contained here and may have a position or be otherwise interested in the investment referred to in this document before its publication. The user of this report assumes the entire risk of any use made of this data/report. Arihant especially states that it has no financial liability, whatsoever, to the users of this report.

## Arihant Capital Markets Ltd

#1011 Solitaire Corporate Park Building No.10 1<sup>st</sup> Floor  
 Andheri Ghatkopar Link Road Chakala Andheri (E) Mumbai-400093  
 T. 022-42254800. Fax: 022-42254880  
[www.arihantcapital.com](http://www.arihantcapital.com)