

To join our research group on TELEGRAM, please click on the links - <https://bit.ly/3HbUtQV> and <https://bit.ly/2YFpdbn>

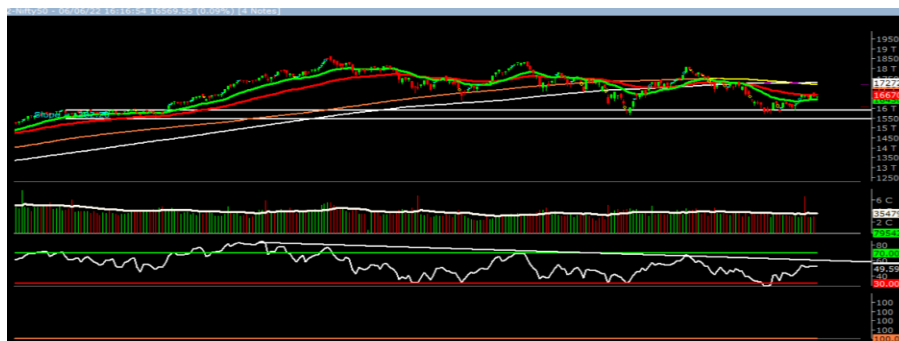
Wednesday, 08th Jun 2022

Indian Indices	Last Price	(%) Chg
NSE	16404.85	-0.99
BSE	55082.42	-1.06
World Indices	Last Price	(%) Chg
Dow Jones	33180.14	0.84
Nasdaq	4160.68	0.95
Nikkei	28208.92	0.95
Hang Seng	21974.84	2.06
FTSE	7598.93	-0.12
Commodity	Last Price	(%) Chg
GOLD(\$/ounce)	1851.40	-0.04
Silver (\$/Ounce)	22.18	0.01
Crude (\$/BBL)	121.06	0.41
Aluminium spot (\$/mt)	2792.00	0.34
Copper SPOT (\$/mt)	9725.00	-0.21
Zinc (\$/MT)	3788.50	-2.18
Natural gas \$/MMBtu	9.38	0.91
Currency	Last Price	(%) Chg
USD-INR	77.70	-0.29
EUR-INR	83.02	0.06
Bond	Last Price	(%) Chg
India 10 Yr Bond yield	7.51	0.24

52 Wk High (A group)			52 Wk Low (A group)		
Company	Close Price	52 Wk High	Company	Close Price	52 Wk Low
CHENNAIPT	365	385	AUROPHA	517	511
MRPL	108	108	JUSTDIAL	623	610
OILINDIA	277	301	RAJESHEX	525	517
--	--	--	RAMCO	607	604
--	--	--	FRETAIL	6.99	6.33

Source: BSE

Market Technical Outlook



Nifty opened lower traded with negative bias throughout the day to close in red. On the daily chart, we are observing that prices have closed marginally below the 20-days SMA (16447). This suggests weakness. We maintain our stance that markets are trading in a range, 16400 on the lower side and 16800 on the higher side. Any breach on either side would dictate the direction of the trend. In coming trading session if Nifty trades below 16340 then it may test 16240 - 16200 levels. On the upside, 16500- 16630 may act as resistance for the day.

We still continue to maintain our stance that the recent low of 15735 is the intermediate bottom and pull- back rally is in offing. Hence, one needs to adopt cautiously positive approach at current level.

Foreign Institutional Investments (FII's) Activities

Name of Segment	Net Buyer/seller	Rs In Cr
Index Futures	Net Sell	-2407.15
Stock Futures	Net Sell	-1565.52
Net Future Position	Net Sell	-3972.67
Index Options	Net Sell	-693.78
Stock Options	Net Sell	-8.96
Net Options Position	Net Sell	-702.74
FII In cash Segment	Net Sell	-2293.98
DII In cash Segment	Net Buy	1311.14
Net Cash Position	Net Sell	-982.24

Guru Call: From the expert's desk

Company	Reco Date	Reco Price (Buy on dips)	High till date	Return%
Accelya Solutions India Ltd	10-Jun-21	1203.90	1539.40	27.87%
Aditya Birla Capital Ltd	13-Aug-21	206.60	210.95	2.11%
Aditya Birla Fashion and Retail Ltd	08-Feb-21	164.40	231.65	40.91%
Alkem	08-Jul-20	2427.00	3558.90	46.64%
Apcotex Industries Limited	13-Aug-21	342.90	350.05	2.09%
Asian Paints Ltd.	30-Mar-17	1068.10	3179.50	197.68%
Astec LifeSciences Limited	09-Jul-21	1360.70	1487.00	9.28%
Avenue Supermarts Ltd.	31-Jul-17	898.55	3448.95	283.84%
Axis Bank Ltd.	10-Apr-18	519.30	827.75	59.40%
Bajaj Finserv Ltd	1-Nov-16	3416.80	13110.00	283.69%
Bajaj Holdings And Investment Ltd	19-May-16	1499.10	4060.00	170.83%
Birla Corporation Limited	28-Jun-21	1240.00	1450.80	17.00%
Britannia	12-June-20	3366.00	4010.00	19.13%
Cadila	03-Apr-20	274.00	673.70	145.88%
CAMS	08-Oct-20	1334.90	3740.65	180.22%
CDSL	17-Sep-20	485.90	1579.00	224.96%
Century Textile and Industries Ltd	25-Nov-16	750.40	1471.20	96.06%
CESC Ltd	08-Jun-21	758.20	870.90	14.86%
CG Power and Industrial Solutions Ltd	10-Feb-21	45.25	91.95	103.20%
Chola finance	25-Sep-20	238.70	600.95	151.76%
Chola Holding	23-Sep-20	391.80	711.00	81.47%
Cipla Ltd	20-Mar-17	597.30	997.00	66.92%
Colgate Palmolive	16-Sep-19	1314.00	1794.85	36.59%
Dabur India	22-Oct-19	466.00	605.00	29.83%
DFM Foods Ltd	03-Feb-21	409.05	453.80	10.94%
DLF Ltd	10-Apr-19	194.30	338.80	74.37%
Dr Reddy	04-Aug-20	4530.00	5614.60	23.94%
Emami Limited	26-Jun-19	290.35	578.50	99.24%
Finolex Cables Ltd	08-Feb-21	368.80	557.70	51.22%
Firstsource Solutions Ltd	13-Aug-21	201.10	209.35	4.10%
Fortis	14-Jul-20	127.00	253.90	99.92%
Gati Ltd	13-Aug-21	148.90	154.20	3.56%
Gillette India Limited	11-Jun-21	5847.00	6249.00	6.88%
Glaxosmithkline Pharmaceuticals Ltd	27-Aug-20	1455.75	1807.50	24.16%
Godrej Consumer Products Limited	16-Jun-20	634.00	980.70	54.68%
HDFC Asset Management Company Ltd.	19-Dec-18	1572.90	3844.00	144.39%
HDFC Bank Limited	10-Nov-16	639.00	1641.00	156.81%
HDFC Life Insurance Co Ltd	19-Jan-18	485.05	746.00	53.80%
Hero Motocorp Ltd	29-Sep-20	3174.95	3629.05	14.30%
Hindustan Unilever Ltd.	13-Nov-17	1290.70	2614.30	102.55%
Housing Development Finance Corp Ltd	19-Dec-17	1720.00	2896.00	68.37%
ICICI Bank Ltd.	06-Apr-18	278.65	679.40	143.82%
ICICI Lombard General Insurance	19-Sep-19	1154.90	1626.45	40.83%
ICICI Prudential Life Insurance Company Ltd.	28-Jun-18	375.80	660.20	75.68%
ICICI Securities Ltd	24-Sep-20	466.65	802.00	71.86%
Indusindbnk	08-Jun-20	451.00	1119.50	148.23%
Infosys Ltd.	17-Aug-17	487.60	1596.85	227.49%
INOX Leisure Ltd	13-Aug-21	327.80	332.70	1.49%
Ion Exchange (India) Ltd	01-June-21	1464.95	2947.00	101.17%
Jubilant Ingrevia Ltd	22-Jul-21	623.00	640.00	2.73%
Kotak Mahindra Bank Ltd	10-Nov-16	822.10	2049.00	149.24%
L&T Finance Holdings Ltd	03-Dec-20	84.05	113.40	34.92%

NIFTY 50 STOCKS BELOW 200SMA

SCRIP NAME	SMA 200	CLOSING (07-06-2022)
INFY	1722.35	1530.05
WIPRO	607.27	473.2
LT	1779.15	1640.2
HCLTECH	1170.65	1037.3
HINDUNILVR	2357.04	2280.5
TATASTEEL	1244.98	1078.1
SBIN	481.47	463.7
DRREDDY	4487.81	4305.75
GRASIM	1646.66	1326.7
TATAMOTORS	434.96	432.35
TATACONSUM	777.05	763.65
HDFC	2568.69	2274
HINDALCO	488.14	409.15
BPCL	393.75	319.35
HDFCBANK	1496.01	1378.45
HEROMOTOCO	2595.75	2540.75
BRITANNIA	3580.92	3491.95
ASIANPAINT	3165.35	2817.45
AXISBANK	740.31	672.2
TITAN	2350.11	2198.55
APOLLOHOSP	4629.85	3633.7
SHREECEM	25982.36	20002.7
INDUSINDBK	980.01	928.75
BAJFINANCE	7068.24	6021
BHARTIARTL	701.94	682.95
ADANIPTS	747.43	741.25
ULTRACEMCO	7096.14	5581.35
DIVISLAB	4581.74	3499.65
TCS	3640.4	3430.95
KOTAKBANK	1871.9	1869.3
TECHM	1464.96	1144.2
JSWSTEEL	667.34	579
BAJAJFINSV	16318.16	12516.4
NESTLEIND	18647.69	16996.9
SBILIFE	1152.95	1142
HDFCLIFE	634.99	606.1
--	--	--
--	--	--
--	--	--
--	--	--

Weekly Expiry Most Active Nifty Call Option

Symbol	Expiry Date	Strike Price	Highest Open Interest (Contracts)
NIFTY	09-Jun-2022	17000	1,68,306
NIFTY	09-Jun-2022	16800	1,30,293
NIFTY	09-Jun-2022	16600	1,26,483

Weekly Expiry Most Active Nifty Put Option

Symbol	Expiry Date	Strike Price	Highest Open Interest (Contracts)
NIFTY	09-Jun-2022	16000	1,01,750
NIFTY	09-Jun-2022	16400	71,233
NIFTY	09-Jun-2022	15800	66,332

Securities in Ban For Trade Date 08-06-2022

DELTACORP

Bulk Deals (NSE)

Deal Date	Scrip Name	Client Name	Deal Type	Quantity	Price
7-Jun-22	FIEMIND	SAIF INDIA IV FII HOLDINGS LIMITED	SELL	160000	1,038.23
7-Jun-22	FRETAIL	INDUSIND BANK LTD CLIENT A/C	SELL	7244000	7.00

Bulk Deals (BSE)

N/A

Note- Executed on 07th Jun 2022. Bulk Deal Buy/Sell done by fund house is considered.

Research Analyst Registration No.

Contact

Website

mail Id

INH000002764

SMS: 'Arihant' to 56677

www.arihantcapital.com

arihant.research@arihantcapital.com

**Arihant is Forbes Asia's '200 Best under a \$Billion' Company
'Best Emerging Commodities Broker' awarded by UTV Bloomberg**

Disclaimer: This document has been prepared by Arihant Capital Markets Limited (hereinafter called as Arihant) and its subsidiaries and associated companies. This document does not constitute an offer or solicitation for the purchase and sale of any financial instrument by Arihant. Receipt and review of this document constitutes your agreement not to circulate, redistribute, retransmit or disclose to others the contents, opinions, conclusion, or information contained herein. This document has been prepared and issued on the basis of publicly available information, internally developed data and other sources believed to be reliable. Whilst meticulous care has been taken to ensure that the facts stated are accurate and opinions given are fair and reasonable, neither the analyst nor any employee of our company is in any way is responsible for its contents and nor is its accuracy or completeness guaranteed. This document is prepared for assistance only and is not intended to be and must not alone be taken as the basis for an investment decision. All recipients of this material should before dealing and or transacting in any of the products referred to in this material make their own investigation, seek appropriate professional advice. The investments discussed in this material may not be suitable for all investors. The recipient alone shall be fully responsible/are liable for any decision taken on the basis of this material. Arihant Capital Markets Ltd (including its affiliates) or its officers, directors, personnel and employees, including persons involved in the preparation or issuance of this material may; (a) from time to time, have positions in, and buy or sell or (b) be engaged in any other transaction and earn brokerage or other compensation in the financial instruments/products discussed herein or act as advisor or lender/borrower in respect of such securities/financial instruments/products or have other potential conflict of interest with respect to any recommendation and related information and opinions. The said persons may have acted upon and/or in a manner contradictory with the information contained here and may have a position or be otherwise interested in the investment referred to in this document before its publication. The user of this report assumes the entire risk of any use made of this data/report. Arihant especially states that it has no financial liability, whatsoever, to the users of this report.

Arihant Capital Markets Ltd

#1011 Solitaire Corporate Park Building No.10 1st Floor
 Andheri Ghatkopar Link Road Chakala Andheri (E) Mumbai-400093
 T. 022-42254800. Fax: 022-42254880
www.arihantcapital.com