

To join our research group on TELEGRAM, please click on the links - <https://bit.ly/37T17JR> and <https://bit.ly/2svtU7k>

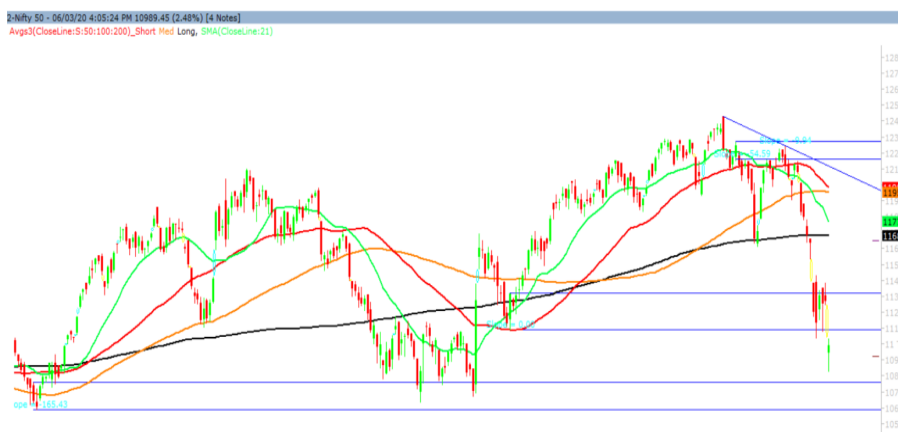
Monday, 09th March, 2020

Indian Indices	Last Price	(%) Chg
BSE	37576.62	-2.32
NSE	10989.45	-2.48
World Indices		
Dow Jones	25864.78	-0.98
Nasdaq	8575.62	-1.87
Nikkei	19473.07	-6.15
Hang Seng	25086.91	-4.05
FTSE	6462.55	-3.62
Commodity	Last Price	(%) Chg
GOLD(\$/ounce)	1700.20	1.66
Silver (\$/Ounce)	17.22	-0.22
Crude (\$/BBL)	34.11	-24.65
Aluminium spot (\$/mt)	1673.50	-0.73
Copper SPOT (\$/mt)	5522.25	-1.94
Lead Spot (\$/MT)	1818.75	-1.24
Natural gas \$/MMBtu	1.63	-4.39
Currency	Last Price	(%) Chg
USD-INR	74.00	0.64
EUR-INR	83.85	2.12
Bond	Last Price	(%) Chg
India 10 Yr Bond yield	6.18	-0.87

52 Wk High (A group)			52 Wk Low (A group)		
Company	Close Price	52 Wk High	Company	Close Price	52 Wk Low
DIVISLAB	2240	2249	ACC	1301	1247
PIDILITE	1654	1661	ADANIPO	341	331
SANOFI	7553	7660	APOLLOT	135	131
--	--	--	CANBK	130	128
--	--	--	CESC	549	587

Source: BSE

Market Technical Outlook



Nifty opened down with a gap made a low of 10827 from where some recovery was seen which led the indices to close in red. On the daily chart, we are observing that prices have breached and close below the demand zone of 11090 to 11312 which suggests weakness. On the downside, 10920 – 10800 may act as support. However a pull-back up to 11030 – 11100 levels cannot be ruled out.

Broadly, the trend remains down and pull-back rallies are likely to face selling pressure. Hence, one needs to adopt cautious approach at current level.

News for stocks

CRUDEOIL	Saudi Arabia started a price war with Russia by slashing its selling prices and pledging to unleash its pent-up supply onto a market reeling from falling demand because of the coronavirus outbreak.
COX&KING	Cox & Kings has releases list of financial and operational creditors. It has a financial debt of Rs 5,912 crore. Major loans have been taken by Yes Bank (Rs 2,285 crore), Axis Bank (Rs 1,065 crore), SBI (Rs 635 crore) and IndusInd Bank (Rs 270 crore).

Foreign Institutional Investments (FII's) Activities

Name of Segment	Net Buyer/seller	Rs In Cr
Index Futures	Net Sell	-2982.29
Stock Futures	Net Buy	763.28
Net Future Position	Net Sell	-2219.01
Index Options	Net Buy	1190.21
Stock Options	Net Sell	-111.52
Net Options Position	Net Buy	1078.69
FII In cash Segment	Net Sell	-3594.84
DII In cash Segment	Net Buy	2543.78
Net Cash Position	Net Sell	-1051.06

Technical Levels for Nifty 50 Companies

Company	Closing 06-03-2020	Buy/Sell Trigger	Resistance 1	Resistance 2	Support 1	Support 2
ADANI PORTS	341.40	338.62	345.98	350.57	334.03	326.67
ASIAN PAINT	1877.45	1865.62	1896.23	1915.02	1846.83	1816.22
AXIS BANK	657.65	653.17	665.28	672.92	645.53	633.42
BAJAJ-AUTO	2735.05	2704.35	2788.70	2842.35	2650.70	2566.35
BAJAJ FINSV	8603.20	8542.73	8685.47	8767.73	8460.47	8317.73
BAJ FINANCE	4225.85	4166.78	4297.07	4368.28	4095.57	3965.28
BHARTIARTL	519.15	518.08	524.72	530.28	512.52	505.88
BPCL	403.10	403.65	409.30	415.50	397.45	391.80
BRITANNIA	3081.40	3064.88	3116.52	3151.63	3029.77	2978.13
CIPLA	434.40	431.87	440.68	446.97	425.58	416.77
COALINDIA	168.75	169.42	172.33	175.92	165.83	162.92
DRREDDY	3170.95	3154.20	3223.20	3275.45	3101.95	3032.95
EICHER MOT	17743.55	17479.02	18136.04	18528.52	17086.54	16429.52
GAIL	107.80	106.18	110.32	112.83	103.67	99.53
GRASIM	665.05	660.32	675.63	686.22	649.73	634.42
HCLTECH	566.20	566.57	573.58	580.97	559.18	552.17
HDFC	2109.45	2115.75	2138.70	2167.95	2086.50	2063.55
HDFC BANK	1134.90	1125.60	1150.20	1165.50	1110.30	1085.70
HEROMOTOCO	2038.30	2020.92	2070.83	2103.37	1988.38	1938.47
HINDALCO	150.10	147.18	154.37	158.63	142.92	135.73
HINDUNILVR	2188.90	2199.38	2239.52	2290.13	2148.77	2108.63
ICICI BANK	486.35	486.82	496.33	506.32	476.83	467.32
INDUSINDBK	1014.80	986.52	1059.23	1103.67	942.08	869.37
INFRA TEL	203.70	204.80	208.60	213.50	199.90	196.10
INFY	738.95	737.35	745.60	752.25	730.70	722.45
IOC	100.80	100.63	101.97	103.13	99.47	98.13
ITC	181.75	182.12	184.48	187.22	179.38	177.02
JSW STEEL	238.80	235.67	243.13	247.47	231.33	223.87
KOTAK BANK	1631.05	1624.42	1650.63	1670.22	1604.83	1578.62
LT	1158.90	1151.25	1171.65	1184.40	1138.50	1118.10
M&M	471.00	467.08	477.67	484.33	460.42	449.83
MARUTI	6445.95	6342.03	6583.92	6721.88	6204.07	5962.18
NESTLE IND	16429.30	16398.32	16596.53	16763.77	16231.08	16032.87
NTPC	105.15	105.08	107.27	109.38	102.97	100.78
ONGC	88.50	89.22	90.78	93.07	86.93	85.37
POWERGRID	190.60	190.45	192.75	194.90	188.30	186.00
RELIANCE	1271.00	1266.75	1292.40	1313.80	1245.35	1219.70
SBIN	270.50	266.28	278.62	286.73	258.17	245.83
SUN PHARMA	400.90	398.05	406.05	411.20	392.90	384.90
TATA MOTORS	114.20	114.77	116.73	119.27	112.23	110.27
TATA STEEL	351.50	352.15	357.65	363.80	346.00	340.50
TCS	2116.45	2103.90	2136.20	2155.95	2084.15	2051.85
TECHM	740.40	740.52	749.63	758.87	731.28	722.17
TITAN	1242.60	1236.42	1253.13	1263.67	1225.88	1209.17
ULTRACEMCO	4167.85	4123.72	4237.43	4307.02	4054.13	3940.42
UPL	513.60	507.27	523.18	532.77	497.68	481.77
VEDL	111.05	110.85	113.60	116.15	108.30	105.55
WIPRO	223.55	224.03	225.52	227.48	222.07	220.58
YES BANK	16.15	18.32	30.98	45.82	3.48	-9.18
ZEEL	221.15	222.83	229.12	237.08	214.87	208.58

(Source – IRIS)

Guru Call: From the expert's desk				
Company	Reco Date	Reco Price (Buy on dips)	High till date	Return%
Aditiya Birla Capital	22-Nov-19	95.75	115.35	20.47%
Asian Paints Ltd.	30-Mar-17	1068.10	1916.70	79.45%
Avenue Supermarts Ltd.	31-Jul-17	898.55	2560.00	184.90%
Axis Bank Ltd.	10-Apr-18	519.30	827.75	59.40%
Bajaj Finance Ltd.	11-Oct-18	2271.00	4923.40	116.79%
Bajaj Finserv Ltd	1-Nov-16	3416.80	9950.00	191.21%
Bajaj Holdings And Investment Ltd	19-May-16	1499.10	3950.00	163.49%
Bandhan Bank Ltd.	19-Dec-18	556.40	650.00	16.82%
Bharat Petroleum Corporation Ltd.	23-Oct-19	531.50	549.00	3.29%
Century Textile and Industries Ltd	25-Nov-16	326.00	656.90	101.50%
Cipla Ltd	20-Mar-17	597.30	678.45	13.59%
Colgate Palmolive	16-Sep-19	1314.00	1642.60	25.01%
Container Corporation	22-Nov-19	577.00	603.00	4.51%
Dabur India	22-Oct-19	466.00	525.00	12.66%
DLF Ltd	10-Apr-19	194.30	265.90	36.85%
Emami Limited	26-Jun-19	290.35	357.70	23.20%
Godrej Industries Ltd.	12-Feb-18	550.70	657.60	19.41%
Godrej Properties Ltd.	19-Dec-18	685.30	1189.25	73.54%
Grasim Industries Ltd.	31-May-17	1132.50	1331.00	17.53%
Havells India Ltd.	8-Dec-17	525.75	806.85	53.47%
Housing Development Finance Corp Ltd	19-Dec-17	1720.00	2499.90	45.34%
HDFC Asset Management Company Ltd.	19-Dec-18	1572.90	3844.00	144.39%
HDFC Bank Limited	10-Nov-16	639.00	1305.50	104.30%
HDFC Life Insurance Co Ltd	19-Jan-18	485.05	646.40	33.26%
Hindustan Unilever Ltd.	13-Nov-17	1290.70	2308.20	78.83%
ICICI Bank Ltd.	6-Apr-18	278.65	552.20	98.17%
ICICI Prudential Life Insurance Company Ltd.	28-Jun-18	375.80	537.30	42.97%
ICICI Lombard General Insurance	19-Sep-19	1154.90	1440.40	24.72%
Infosys Ltd.	17-Aug-17	487.60	847.00	73.71%
Kansai Nerolac Paints	16-Dec-19	529.85	551.00	3.99%
Kotak Mahindra Bank Ltd	10-Nov-16	822.10	1740.00	111.65%
Mahindra & Mahindra Ltd.	5-Jun-17	709.25	993.00	40.01%
Manappuram Finance Ltd.	24-Apr-18	119.20	194.80	63.42%
Mahanagar Gas	15-Nov-19	1029.00	1246.20	21.11%
Marico Ltd.	4-Apr-18	325.00	404.00	24.31%
Nestle India Ltd.	27-Sep-18	9729.40	16835.15	73.03%
Oberoi Realty Ltd.	23-Nov-17	508.60	641.70	26.17%
Phoenix Mills Limited	7-Jul-19	655.15	979.00	49.43%
Pidilite Industries Limited	4-Oct-16	681.60	1661.00	143.69%
Prestige Estates Projects Limited	6-Jun-19	286.70	426.00	48.59%
Nam-India	25-Nov-18	377.00	452.90	20.13%
Rites Ltd.	19-Dec-18	226.96	331.00	45.84%
RBL Bank	22-Nov-19	334.00	391.20	17.13%
State Bank Of India	28-Aug-18	308.00	373.80	21.36%
Shipping Corporation	22-Nov-19	64.00	65.95	3.05%
Tata Chemicals Limited	24-Dec-19	296.89	339.70	14.42%
Tata Consumer	29-Jun-17	149.15	408.00	173.55%
Tata Consultancy Services Ltd.	8-Jan-18	1344.60	2296.20	70.77%
Trent Ltd.	19-Dec-18	348.40	794.00	127.90%
Ultratech Cement Ltd.	19-Dec-18	4084.60	4904.95	20.08%
Voltas Ltd.	27-Mar-18	613.90	741.00	20.70%
Whirlpool Of India Ltd.	7-Dec-16	872.25	2555.00	192.92%
Zee Entertainment	22-Nov-19	345.00	362.00	4.93%

NIFTY 50 STOCKS BELOW 200SMA

SCRIP NAME	SMA 200	CLOSING (06-03-2020)
INFY	753.56	738.95
WIPRO	255.35	223.55
RELIANCE	1378.82	1271.00
ZEEL	304.40	221.15
LT	1384.22	1158.90
ITC	249.09	181.75
TATASTEEL	424.61	351.50
SBIN	316.85	270.50
GRASIM	783.12	665.05
TATAMOTORS	155.51	114.20
CIPLA	483.75	434.40
M&M	565.99	471.00
HDFC	2227.65	2109.45
HINDALCO	194.22	150.10
BPCL	436.00	403.10
HDFCBANK	1211.15	1134.90
HEROMOTOCO	2519.45	2038.30
SUNPHARMA	418.75	400.90
IOC	134.25	100.80
AXISBANK	728.76	657.65
ONGC	134.07	88.50
VEDL	150.75	111.05
UPL	587.07	513.60
GAIL	132.45	107.80
EICHERMOT	19431.36	17743.55
INDUSINDBK	1394.86	1014.80
ADANIPTS	385.01	341.40
POWERGRID	196.39	190.60
ULTRACEMCO	4307.46	4167.85
TCS	2152.00	2116.45
JSWSTEEL	251.75	238.80
NTPC	121.27	105.15
MARUTI	6737.12	6445.95
YESBANK	68.76	16.15
BAJAJ-AUTO	2973.42	2735.05
COALINDIA	207.46	168.75
INFRATEL	249.10	203.70

Weekly Expiry Most Active Nifty Call Option

Symbol	Expiry Date	Strike Price	Highest Open Interest (OI)
NIFTY	12-Mar-2020	11500	1835400
NIFTY	12-Mar-2020	11300	1299975
NIFTY	12-Mar-2020	11400	1265475

Weekly Expiry Most Active Nifty Put Option

Symbol	Expiry Date	Strike Price	Highest Open Interest (OI)
NIFTY	12-Mar-2020	10000	999750
NIFTY	12-Mar-2020	10500	989325
NIFTY	12-Mar-2020	10900	984450

Securities in Ban For Trade Date 09-03-2020

NIL

Bulk Deals (BSE)

N/A.

Bulk Deals (NSE)

Deal Date	Scrip Name	Client Name	Deal Type	Quantity	Price
6-Mar-20	RBL Bank Limited	CREDIT SUISSE SINGAPORE LIMITED (ODI)	BUY	4355103	256.48
6-Mar-20	Eveready Inds. Ind. Ltd.	HOUSING DEVELOPMENT FINANCE CORPORATION LIMITED	SELL	850000	64.00
6-Mar-20	Yes Bank Limited	GOVERNMENT PENSION FUND GLOBAL	SELL	15641609	7.22

Note- Executed on 06th Mar 2020. Bulk Deal Buy/Sell done by fund house is considered.

Research Analyst Registration No.

INH000002764

Contact

SMS: 'Arihant' to 56677

Website
www.arihantcapital.com
mail Id
arihant.research@arihantcapital.com

Arihant is Forbes Asia's '200 Best under a \$Billion' Company
'Best Emerging Commodities Broker' awarded by UTV Bloomberg

Disclaimer: This document has been prepared by Arihant Capital Markets Limited (hereinafter called as Arihant) and its subsidiaries and associated companies. This document does not constitute an offer or solicitation for the purchase and sale of any financial instrument by Arihant. Receipt and review of this document constitutes your agreement not to circulate, redistribute, retransmit or disclose to others the contents, opinions, conclusion, or information contained herein. This document has been prepared and issued on the basis of publicly available information, internally developed data and other sources believed to be reliable. Whilst meticulous care has been taken to ensure that the facts stated are accurate and opinions given are fair and reasonable, neither the analyst nor any employee of our company is in any way is responsible for its contents and nor is its accuracy or completeness guaranteed. This document is prepared for assistance only and is not intended to be and must not alone be taken as the basis for an investment decision. All recipients of this material should before dealing and or transacting in any of the products referred to in this material make their own investigation, seek appropriate professional advice. The investments discussed in this material may not be suitable for all investors. The recipient alone shall be fully responsible/are liable for any decision taken on the basis of this material. Arihant Capital Markets Ltd (including its affiliates) or its officers, directors, personnel and employees, including persons involved in the preparation or issuance of this material may; (a) from time to time, have positions in, and buy or sell or (b) be engaged in any other transaction and earn brokerage or other compensation in the financial instruments/products discussed herein or act as advisor or lender/borrower in respect of such securities/financial instruments/products or have other potential conflict of interest with respect to any recommendation and related information and opinions. The said persons may have acted upon and/or in a manner contradictory with the information contained here and may have a position or be otherwise interested in the investment referred to in this document before its publication. The user of this report assumes the entire risk of any use made of this data/report. Arihant especially states that it has no financial liability, whatsoever, to the users of this report.

Arihant Capital Markets Ltd

#1011 Solitaire Corporate Park Building No.10 1st Floor
 Andheri Ghatkopar Link Road Chakala Andheri (E) Mumbai-400093

T. 022-42254800. Fax: 022-42254880

www.arihantcapital.com