

To join our research group on TELEGRAM, please click on the links - <https://bit.ly/37T17JR> and <https://bit.ly/2svtU7k>

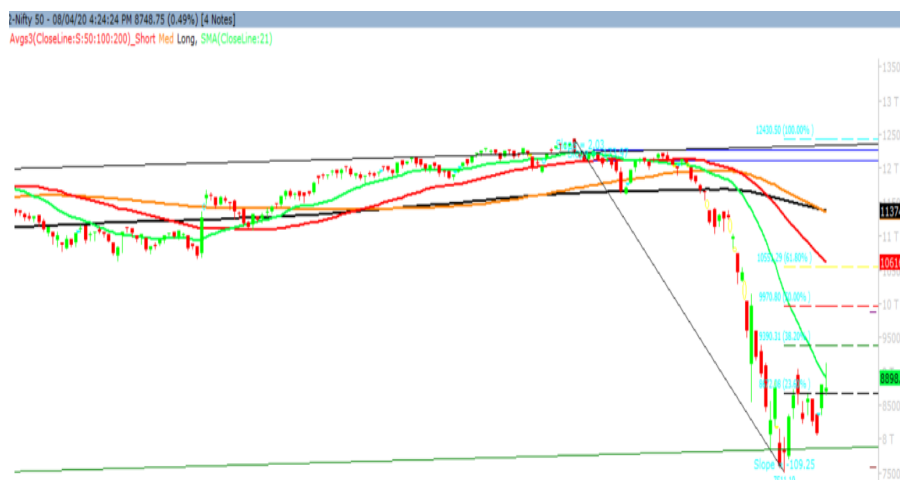
Thursday, 09th March, 2020

Indian Indices	Last Price	(%) Chg
BSE	29893.96	-0.58
NSE	8748.75	-0.49
World Indices	Last Price	(%) Chg
Dow Jones	23433.57	3.44
Nasdaq	8090.90	2.58
Nikkei	19288.65	-0.33
Hang Seng	24211.42	1.01
FTSE	5677.73	-0.47
Commodity	Last Price	(%) Chg
GOLD(\$/ounce)	1683.10	-0.07
Silver (\$/Ounce)	15.28	0.53
Crude (\$/BBL)	33.68	2.56
Aluminium spot (\$/mt)	1477.75	0.66
Copper SPOT (\$/mt)	5036.75	0.32
Lead Spot (\$/MT)	1716.25	0.13
Natural gas \$/MMBtu	1.80	1.18
Currency	Last Price	(%) Chg
USD-INR	76.68	0.81
EUR-INR	83.22	0.66
Bond	Last Price	(%) Chg
India 10 Yr Bond yield	6.44	0.42

52 Wk High (A group)			52 Wk Low (A group)		
Company	Close Price	52 Wk High	Company	Close Price	52 Wk Low
BIOCON	327	345	CUMMIN	329	281
CADILA	349	366	DBCORP	80	72
HUL	2458	2614	FRETAIL	64.2	64.2
IPCA	1615	1821	OBEROI	306	304
TORNTPH	2531	2640	RAMCOC	471	456

Source: BSE

Market Technical Outlook



Nifty opened on a subdued note witnessed a rally in the first half of the session, made a high of 9131. However, selling pressure emerged in the latter half of the session which dragged down the indices to close in red. On the daily chart, we are observing that the prices tested the 21-day SMA (8898) but have closed below it. However, prices have managed to close above the 23% Fibonacci retracement level 8672 (Shown above in the graph). In coming trading session as long as Nifty holds 8672 level then it is likely to test 8900-9000 – 9131 levels. On the flip side if Nifty trades below 8672 level then it may test 8500 – 8400 levels.

We maintain our stance that pull-back rally is in offing. Hence to play this pull-back rally one needs to adopt cautiously positive approach at current level. We still maintain our stance that the trend remains down hence at higher levels we may witness selling pressure.

News for stocks

--	--
--	--

Foreign Institutional Investments (FII's) Activities

Name of Segment	Net Buyer/seller	Rs In Cr
Index Futures	Net Sell	-413.11
Stock Futures	Net Sell	-1166.75
Net Future Position	Net Sell	-1579.86
Index Options	Net Sell	-485.49
Stock Options	Net Buy	14.23
Net Options Position	Net Sell	-471.26
FII In cash Segment	Net Buy	1943.41
DII In cash Segment	Net Sell	-1757.79
Net Cash Position	Net Buy	185.62

Technical Levels for Nifty 50 Companies

Company	Closing 08-04-2020	Buy/Sell Trigger	Resistance 1	Resistance 2	Support 1	Support 2
ADANI PORTS	250.85	249.82	256.88	262.92	243.78	236.72
ASIAN PAINT	1608.95	1632.25	1664.50	1720.05	1576.70	1544.45
AXIS BANK	391.35	397.52	421.53	451.72	367.33	343.32
BAJAJ-AUTO	2241.70	2264.57	2360.58	2479.47	2145.68	2049.67
BAJAJ FINSV	4608.50	4698.77	4859.73	5110.97	4447.53	4286.57
BAJFINANCE	2332.90	2283.68	2423.22	2513.53	2193.37	2053.83
BHARTIARTL	461.65	468.58	484.17	506.68	446.07	430.48
BPCL	342.30	348.92	357.58	372.87	333.63	324.97
BRITANNIA	2775.55	2841.52	2924.03	3072.52	2693.03	2610.52
CIPLA	512.75	510.92	531.83	550.92	491.83	470.92
COALINDIA	137.35	139.25	141.50	145.65	135.10	132.85
DRREDDY	3683.00	3639.67	3808.33	3933.67	3514.33	3345.67
EICHERMOT	13158.50	13202.83	13605.67	14052.83	12755.67	12352.83
GAIL	85.55	88.10	92.40	99.25	81.25	76.95
GRASIM	512.60	515.17	529.93	547.27	497.83	483.07
HCLTECH	463.10	462.97	476.93	490.77	449.13	435.17
HDFC	1558.80	1595.27	1655.53	1752.27	1498.53	1438.27
HDFCBANK	888.90	900.00	933.90	978.90	855.00	821.10
HEROMOTOCO	1821.65	1801.82	1903.63	1985.62	1719.83	1618.02
HINDALCO	100.85	103.85	108.80	116.75	95.90	90.95
HINDUNILVR	2460.85	2497.52	2577.63	2694.42	2380.73	2300.62
ICICIBANK	318.95	328.93	342.77	366.58	305.12	291.28
INDUSINDBK	399.15	400.85	439.70	480.25	360.30	321.45
INFRA TEL	166.40	164.95	171.85	177.30	159.50	152.60
INFY	631.60	637.87	649.38	667.17	620.08	608.57
IOC	81.75	82.95	84.80	87.85	79.90	78.05
ITC	178.65	179.77	182.88	187.12	175.53	172.42
JSWSTEEL	154.60	159.17	166.18	177.77	147.58	140.57
KOTAK BANK	1187.65	1196.85	1233.35	1279.05	1151.15	1114.65
LT	807.10	812.27	826.83	846.57	792.53	777.97
M&M	326.40	329.87	346.93	367.47	309.33	292.27
MARUTI	4698.10	4676.53	4946.57	5195.03	4428.07	4158.03
NESTLEIND	16871.25	16990.25	17425.05	17978.85	16436.45	16001.65
NTPC	85.20	84.10	87.90	90.60	81.40	77.60
ONGC	74.45	73.93	76.87	79.28	71.52	68.58
POWERGRID	158.35	158.77	162.28	166.22	154.83	151.32
RELIANCE	1192.15	1193.72	1227.43	1262.72	1158.43	1124.72
SBIN	183.00	185.95	191.45	199.90	177.50	172.00
SUNPHARMA	436.70	432.87	452.58	468.47	416.98	397.27
TATAMOTORS	67.60	68.20	71.00	74.40	64.80	62.00
TATASTEEL	274.75	278.10	289.55	304.35	263.30	251.85
TCS	1705.45	1737.48	1773.97	1842.48	1668.97	1632.48
TECHM	558.90	555.23	573.47	588.03	540.67	522.43
TITAN	913.45	924.42	955.43	997.42	882.43	851.42
ULTRACEMCO	3256.45	3279.52	3361.78	3467.12	3174.18	3091.92
UPL	320.20	324.72	332.98	345.77	311.93	303.67
VEDL	70.30	69.57	74.13	77.97	65.73	61.17
WIPRO	192.90	193.90	199.00	205.10	187.80	182.70
YESBANK	24.75	24.52	25.73	26.72	23.53	22.32
ZEEL	143.15	142.18	149.12	155.08	136.22	129.28

(Source – IRIS)

Guru Call: From the expert's desk

Company	Reco Date	Reco Price (Buy on dips)	High till date	Return%
Aditya Birla Capital	22-Nov-19	95.75	115.35	20.47%
Asian Paints Ltd.	30-Mar-17	1068.10	1916.70	79.45%
Avenue Supermarts Ltd.	31-Jul-17	898.55	2560.00	184.90%
Axis Bank Ltd.	10-Apr-18	519.30	827.75	59.40%
Bajaj Finance Ltd.	11-Oct-18	2271.00	4923.40	116.79%
Bajaj Finserv Ltd	1-Nov-16	3416.80	9950.00	191.21%
Bajaj Holdings And Investment Ltd	19-May-16	1499.10	3950.00	163.49%
Bandhan Bank Ltd.	19-Dec-18	556.40	650.00	16.82%
Bharat Petroleum Corporation Ltd.	23-Oct-19	531.50	549.00	3.29%
Century Textile and Industries Ltd	25-Nov-16	326.00	656.90	101.50%
Cipla Ltd	20-Mar-17	597.30	678.45	13.59%
Colgate Palmolive	16-Sep-19	1314.00	1642.60	25.01%
Container Corporation	22-Nov-19	577.00	603.00	4.51%
Dabur India	22-Oct-19	466.00	525.00	12.66%
DLF Ltd	10-Apr-19	194.30	265.90	36.85%
Emami Limited	26-Jun-19	290.35	357.70	23.20%
Godrej Industries Ltd.	12-Feb-18	550.70	657.60	19.41%
Godrej Properties Ltd.	19-Dec-18	685.30	1189.25	73.54%
Grasim Industries Ltd.	31-May-17	1132.50	1331.00	17.53%
Havells India Ltd.	8-Dec-17	525.75	806.85	53.47%
Housing Development Finance Corp Ltd	19-Dec-17	1720.00	2499.90	45.34%
HDFC Asset Management Company Ltd.	19-Dec-18	1572.90	3844.00	144.39%
HDFC Bank Limited	10-Nov-16	639.00	1305.50	104.30%
HDFC Life Insurance Co Ltd	19-Jan-18	485.05	646.40	33.26%
Hindustan Unilever Ltd.	13-Nov-17	1290.70	2308.20	78.83%
ICICI Bank Ltd.	6-Apr-18	278.65	552.20	98.17%
ICICI Prudential Life Insurance Company Ltd.	28-Jun-18	375.80	537.30	42.97%
ICICI Lombard General Insurance	19-Sep-19	1154.90	1440.40	24.72%
Infosys Ltd.	17-Aug-17	487.60	847.00	73.71%
Kansai Nerolac Paints	16-Dec-19	529.85	551.00	3.99%
Kotak Mahindra Bank Ltd	10-Nov-16	822.10	1740.00	111.65%
Mahindra & Mahindra Ltd.	5-Jun-17	709.25	993.00	40.01%
Manappuram Finance Ltd.	24-Apr-18	119.20	194.80	63.42%
Mahanagar Gas	15-Nov-19	1029.00	1246.20	21.11%
Marico Ltd.	4-Apr-18	325.00	404.00	24.31%
Nestle India Ltd.	27-Sep-18	9729.40	16835.15	73.03%
Oberoi Realty Ltd.	23-Nov-17	508.60	641.70	26.17%
Phoenix Mills Limited	7-Jul-19	655.15	979.00	49.43%
Pidilite Industries Limited	4-Oct-16	681.60	1661.00	143.69%
Prestige Estates Projects Limited	6-Jun-19	286.70	426.00	48.59%
Nam-India	25-Nov-18	377.00	452.90	20.13%
Rites Ltd.	19-Dec-18	226.96	331.00	45.84%
RBL Bank	22-Nov-19	334.00	391.20	17.13%
State Bank Of India	28-Aug-18	308.00	373.80	21.36%
Shipping Corporation	22-Nov-19	64.00	65.95	3.05%
Tata Chemicals Limited	24-Dec-19	296.89	339.70	14.42%
Tata Consumer	29-Jun-17	149.15	408.00	173.55%
Tata Consultancy Services Ltd.	8-Jan-18	1344.60	2296.20	70.77%
Trent Ltd.	19-Dec-18	348.40	794.00	127.90%
Ultratech Cement Ltd.	19-Dec-18	4084.60	4904.95	20.08%
Voltas Ltd.	27-Mar-18	613.90	741.00	20.70%
Whirlpool Of India Ltd.	7-Dec-16	872.25	2555.00	192.92%
Zee Entertainment	22-Nov-19	345.00	362.00	4.93%

NIFTY 50 STOCKS BELOW 200SMA

SCRIP NAME	SMA 200	CLOSING (08-04-2020)
INFY	741.49	631.60
WIPRO	244.86	192.90
RELIANCE	1351.62	1192.15
ZEEL	283.72	143.15
LT	1319.09	807.10
ITC	236.86	178.65
HCLTECH	544.85	463.10
TATASTEEL	403.88	274.75
SBIN	302.50	183.00
GRASIM	745.02	512.60
TATAMOTORS	145.76	67.60
M&M	534.62	326.40
HDFC	2181.32	1558.80
HINDALCO	184.96	100.85
BPCL	429.03	342.30
ICICIBANK	460.75	318.95
HDFCBANK	1181.35	888.90
HEROMOTOCO	2420.49	1821.65
BRITANNIA	2920.27	2775.55
ASIANPAINT	1675.99	1608.95
IOC	126.66	81.75
AXISBANK	691.24	391.35
ONGC	123.57	74.45
TITAN	1169.89	913.45
VEDL	141.33	70.30
UPL	553.90	320.20
GAIL	123.67	85.55
SHREECEM	20629.85	16063.95
EICHERMOT	18899.67	13158.50
INDUSINDBK	1288.93	399.15
BAJFINANCE	3812.86	2332.90
ADANIPORTS	369.56	250.85
POWERGRID	193.23	158.35
ULTRACEMCO	4177.57	3256.45
TCS	2111.19	1705.45
KOTAKBANK	1557.08	1187.65
TECHM	720.53	558.90
JSWSTEEL	241.03	154.60
NTPC	116.52	85.20
MARUTI	6541.97	4698.10
BAJAJ-AUTO	2893.88	2241.70
BAJAJFINSV	8220.82	4608.50
COALINDIA	196.12	137.35
INFRADEL	238.72	166.40

Securities in Ban For Trade Date 09-04-2020

NIL

Weekly Expiry Most Active Nifty Call Option

Symbol	Expiry Date	Strike Price	Highest Open Interest (OI)
NIFTY	09-Apr-2020	9000	1572750
NIFTY	09-Apr-2020	9500	1485225
NIFTY	09-Apr-2020	9200	870675

Weekly Expiry Most Active Nifty Put Option

Symbol	Expiry Date	Strike Price	Highest Open Interest (OI)
NIFTY	09-Apr-2020	8000	1867200
NIFTY	09-Apr-2020	8500	1470900
NIFTY	09-Apr-2020	8700	1191525

Bulk Deals (BSE)

N/A

Bulk Deals (NSE)

Deal Date	Scrip Name	Client Name	Deal Type	Quantity	Price
8-Apr-20	Mangalam Cement Ltd	INDIA CAPITAL MANAGEMENT LIMITED A/C INDIA CAPITAL FUND LIMITED	SELL	700000	150.00
8-Apr-20	Tata Communications Ltd.	EAST BRIDGE CAPITAL MASTER FUND I LIMITED	BUY	4400000	235.00
8-Apr-20	Tata Communications Ltd.	UNIVERSITY OF NOTRE DAME DU LAC	BUY	1501740	235.00
8-Apr-20	Tata Communications Ltd.	FIDELITY INVESTMENT TRUST FIDELITY SERIES EMERGING MARKETS FUND	SELL	6379338	235.01
8-Apr-20	Tata Communications Ltd.	FIDELITY MANAGEMENT TRUST COMPANY A/C FIDELITY EME MKT COLLECTIVE POOL	SELL	1514997	235.01

Note- Executed on 08th Apr 2020. Bulk Deal Buy/Sell done by fund house is considered.
Research Analyst Registration No.

INH000002764

Contact

SMS: 'Arihant' to 56677

Website
www.arihantcapital.com
mail Id
arihant.research@arihantcapital.com

Arihant is Forbes Asia's '200 Best under a \$Billion' Company
'Best Emerging Commodities Broker' awarded by UTV Bloomberg

Disclaimer: This document has been prepared by Arihant Capital Markets Limited (hereinafter called as Arihant) and its subsidiaries and associated companies. This document does not constitute an offer or solicitation for the purchase and sale of any financial instrument by Arihant. Receipt and review of this document constitutes your agreement not to circulate, redistribute, retransmit or disclose to others the contents, opinions, conclusion, or information contained herein. This document has been prepared and issued on the basis of publicly available information, internally developed data and other sources believed to be reliable. Whilst meticulous care has been taken to ensure that the facts stated are accurate and opinions given are fair and reasonable, neither the analyst nor any employee of our company is in any way is responsible for its contents and nor is its accuracy or completeness guaranteed. This document is prepared for assistance only and is not intended to be and must not alone be taken as the basis for an investment decision. All recipients of this material should before dealing and or transacting in any of the products referred to in this material make their own investigation, seek appropriate professional advice. The investments discussed in this material may not be suitable for all investors. The recipient alone shall be fully responsible/are liable for any decision taken on the basis of this material. Arihant Capital Markets Ltd (including its affiliates) or its officers, directors, personnel and employees, including persons involved in the preparation or issuance of this material may; (a) from time to time, have positions in, and buy or sell or (b) be engaged in any other transaction and earn brokerage or other compensation in the financial instruments/products discussed herein or act as advisor or lender/borrower in respect of such securities/financial instruments/products or have other potential conflict of interest with respect to any recommendation and related information and opinions. The said persons may have acted upon and/or in a manner contradictory with the information contained here and may have a position or be otherwise interested in the investment referred to in this document before its publication. The user of this report assumes the entire risk of any use made of this data/report. Arihant especially states that it has no financial liability, whatsoever, to the users of this report.

Arihant Capital Markets Ltd

#1011 Solitaire Corporate Park Building No.10 1st Floor
 Andheri Ghatkopar Link Road Chakala Andheri (E) Mumbai-400093
 T. 022-42254800. Fax: 022-42254880
www.arihantcapital.com