

To join our research group on TELEGRAM, please click on the links - <https://bit.ly/37T17JR> and <https://bit.ly/2svtU7k>

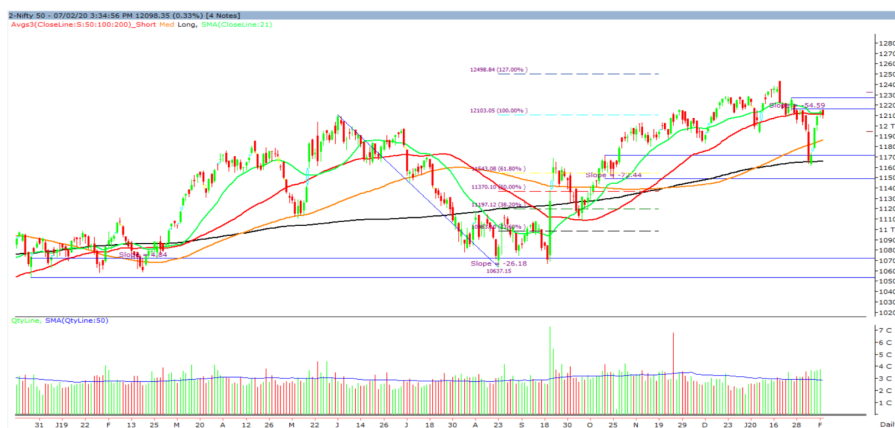
Monday, 10th February, 2020

Indian Indices	Last Price	(%) Chg
BSE	41141.85	-0.40
NSE	12098.35	-0.33
World Indices		
Dow Jones	29102.51	-0.94
Nasdaq	9520.51	-0.54
Nikkei	23756.42	-0.30
Hang Seng	27253.51	-0.54
FTSE	7466.70	-0.51
Commodity	Last Price	(%) Chg
GOLD(\$/ounce)	1574.60	0.08
Silver (\$/Ounce)	17.70	0.07
Crude (\$/BBL)	54.34	-0.24
Aluminium spot (\$/mt)	1727.00	0.42
Copper SPOT (\$/mt)	5699.50	0.77
Lead Spot (\$/MT)	1817.25	0.17
Natural gas \$/MMBtu	1.80	-3.18
Currency	Last Price	(%) Chg
USD-INR	71.52	0.35
EUR-INR	78.49	-0.04
Bond	Last Price	(%) Chg
India 10 Yr Bond yield	6.43	-0.11

52 Wk High (A group)			52 Wk Low (A group)		
Company	Close Price	52 Wk High	Company	Close Price	52 Wk Low
ABFRL	260	263	ALBK	16.4	16.0
AJANTAP	1369	1398	--	--	--
ALKEM	2505	2556	--	--	--
ATUL	4943	5089	--	--	--
BAJAJFIN	4650	4686	--	--	--

Source: BSE

Market Technical Outlook



Nifty opened higher but was unable to sustain the opening gains which led the indices to close in red. On the daily chart, we are observing a spinning top which has close below the 50-day SMA (12112). Hence, 12112 remains crucial resistance. Any close above 12112 would propel Nifty to test 12180 – 12250 levels. On the downside, 12050 – 11980 levels may act as support for the day. **We still maintain our stance that one needs to adopt cautious approach at current levels and wait for more confirmation of trend reversal. However, Stock activity is likely to continue.**

News for stocks

IBULHSGFI	CRISIL downgrades instruments of Indiabulls Housing Finance by a notch; however, revises outlook to stable from –ve
TATASTEEL	Tata Steel posted a consolidated net loss of Rs 1,228 crore for the quarter ended December 31. It had reported a net profit of Rs 1,753 crore in the same period last year

Foreign Institutional Investments (FII's) Activities

Name of Segment	Net Buyer/seller	Rs In Cr
Index Futures	Net Sell	-428.14
Stock Futures	Net Buy	273.44
Net Future Position	Net Sell	-77.35
Index Options	Net Buy	1024.97
Stock Options	Net Sell	-0.61
Net Options Position	Net Buy	1024.36
FII In cash Segment	Net Buy	161.93
DII In cash Segment	Net Sell	-178.59
Net Cash Position	Net Sell	-16.66

Technical Levels for Nifty 50 Companies

Company	Closing 07-02-2020	Buy/Sell Trigger	Resistance 1	Resistance 2	Support 1	Support 2
ADANI PORTS	369.55	370.15	373.10	376.65	366.60	363.65
ASIAN PAINT	1858.70	1861.93	1873.27	1887.83	1847.37	1836.03
AXIS BANK	748.15	743.78	753.57	758.98	738.37	728.58
BAJAJ-AUTO	3134.85	3143.48	3180.37	3225.88	3097.97	3061.08
BAJAJ FINSV	9623.30	9619.33	9677.62	9731.93	9565.02	9506.73
BAJ FINANCE	4654.30	4655.77	4685.43	4716.57	4624.63	4594.97
BHARTIARTL	539.45	542.23	546.22	552.98	535.47	531.48
BPCL	491.40	491.00	496.00	500.60	486.40	481.40
BRITANNIA	3251.40	3261.50	3285.90	3320.40	3227.00	3202.60
CIPLA	443.20	442.13	446.97	450.73	438.37	433.53
COALINDIA	185.05	183.07	188.03	191.02	180.08	175.12
DRREDDY	3166.70	3162.90	3188.80	3210.90	3140.80	3114.90
EICHER MOT	19736.30	19973.32	20279.93	20823.57	19429.68	19123.07
GAIL	123.00	123.25	124.35	125.70	121.90	120.80
GRASIM	787.65	792.27	798.98	810.32	780.93	774.22
HCLTECH	607.70	605.35	611.55	615.40	601.50	595.30
HDFC	2405.65	2418.77	2439.18	2472.72	2385.23	2364.82
HDFC BANK	1242.20	1240.27	1248.93	1255.67	1233.53	1224.87
HEROMOTOCO	2443.45	2453.60	2485.85	2528.25	2411.20	2378.95
HINDALCO	197.40	196.22	199.58	201.77	194.03	190.67
HINDUNILVR	2159.95	2157.85	2174.10	2188.25	2143.70	2127.45
ICICIBANK	536.45	537.78	540.42	544.38	533.82	531.18
INDUSINDBK	1298.80	1313.20	1331.65	1364.50	1280.35	1261.90
INFRA TEL	247.80	246.40	250.40	253.00	243.80	239.80
INFY	777.30	775.72	780.43	783.57	772.58	767.87
IOC	117.50	116.75	118.50	119.50	115.75	114.00
ITC	213.40	213.95	215.15	216.90	212.20	211.00
JSW STEEL	279.30	277.35	281.95	284.60	274.70	270.10
KOTAK BANK	1653.05	1658.33	1672.67	1692.28	1638.72	1624.38
LT	1299.00	1303.13	1310.27	1321.53	1291.87	1284.73
M&M	569.10	570.63	579.97	590.83	559.77	550.43
MARUTI	6971.75	6985.58	7036.17	7100.58	6921.17	6870.58
NESTLE IND	16327.80	16302.47	16410.33	16492.87	16219.93	16112.07
NTPC	115.60	114.72	117.13	118.67	113.18	110.77
ONGC	109.25	108.52	110.48	111.72	107.28	105.32
POWERGRID	190.40	190.58	192.62	194.83	188.37	186.33
RELIANCE	1433.65	1438.10	1447.90	1462.15	1423.85	1414.05
SBIN	320.55	321.32	324.23	327.92	317.63	314.72
SUN PHARMA	430.80	431.92	440.63	450.47	422.08	413.37
TATAMOTORS	173.60	174.92	176.83	180.07	171.68	169.77
TATA STEEL	471.00	473.18	477.52	484.03	466.67	462.33
TCS	2136.55	2135.52	2152.03	2167.52	2120.03	2103.52
TECHM	824.45	821.38	828.52	832.58	817.32	810.18
TITAN	1275.00	1270.97	1283.53	1292.07	1262.43	1249.87
ULTRACEMCO	4471.80	4489.48	4529.32	4586.83	4431.97	4392.13
UPL	543.10	545.62	552.93	562.77	535.78	528.47
VEDL	144.60	143.88	146.02	147.43	142.47	140.33
WIPRO	243.95	244.63	246.32	248.68	242.27	240.58
YES BANK	38.70	38.93	39.72	40.73	37.92	37.13
ZEEL	249.75	245.92	255.33	260.92	240.33	230.92

(Source – IRIS)

Guru Call: From the expert's desk

Company	Reco Date	Reco Price (Buy on dips)	High till date	Return%
Aditiya Birla Capital	22-Nov-19	95.75	115.35	20.47%
Asian Paints Ltd.	30-Mar-17	1068.1	1862.25	74.35%
Avenue Supermarts Ltd.	31-Jul-17	898.55	2010	123.69%
Axis Bank Ltd.	10-Apr-18	519.3	827.75	59.40%
Bajaj Finance Ltd.	11-Oct-18	2271	4295.75	89.16%
Bajaj Finserv Ltd	1-Nov-16	3416.8	9764.35	185.77%
Bajaj Holdings And Investment Ltd	19-May-16	1499.1	3903.95	160.42%
Bandhan Bank Ltd.	19-Dec-18	556.4	650	16.82%
Bharat Petroleum Corporation Ltd.	23-Oct-19	531.5	549	3.29%
Century Textile and Industries Ltd	25-Nov-16	326	634	94.48%
Cipla Ltd	20-Mar-17	597.3	678.45	13.59%
Colgate Palmolive	16-Sep-19	1314	1642.6	25.01%
Container Corporation	22-Nov-19	577	603	4.51%
Dabur India	22-Oct-19	466	501	7.51%
DLF Ltd	10-Apr-19	194.3	265.9	36.85%
Emami Limited	26-Jun-19	290.35	357.7	23.20%
Godrej Industries Ltd.	12-Feb-18	550.7	657.6	19.41%
Godrej Properties Ltd.	19-Dec-18	685.3	1119.6	63.37%
Grasim Industries Ltd.	31-May-17	1132.5	1331	17.53%
Havells India Ltd.	8-Dec-17	525.75	806.85	53.47%
Housing Development Finance Corp Ltd	19-Dec-17	1720	2499.9	45.34%
HDFC Asset Management Company Ltd.	19-Dec-18	1572.9	3844	144.39%
HDFC Bank Limited	10-Nov-16	639	1305.5	104.30%
HDFC Life Insurance Co Ltd	19-Jan-18	485.05	646.4	33.26%
Hindustan Unilever Ltd.	13-Nov-17	1290.7	2190	69.68%
ICICI Bank Ltd.	6-Apr-18	278.65	552.2	98.17%
ICICI Prudential Life Insurance Company Ltd.	28-Jun-18	375.8	537.3	42.97%
ICICI Lombard General Insurance	19-Sep-19	1154.9	1440.4	24.72%
Infosys Ltd.	17-Aug-17	487.6	847	73.71%
Kansai Nerolac Paints	16-Dec-19	529.85	551	3.99%
Kotak Mahindra Bank Ltd	10-Nov-16	822.1	1734.8	111.02%
Mahindra & Mahindra Ltd.	5-Jun-17	709.25	993	40.01%
Manappuram Finance Ltd.	24-Apr-18	119.2	189	58.56%
Mahanagar Gas	15-Nov-19	1029	1198	16.42%
Marico Ltd.	4-Apr-18	325	404	24.31%
Nestle India Ltd.	27-Sep-18	9729.4	15850	62.91%
Oberoi Realty Ltd.	23-Nov-17	508.6	641.7	26.17%
Phoenix Mills Limited	7-Jul-19	655.15	900	37.37%
Pidilite Industries Limited	4-Oct-16	681.6	1493.5	119.12%
Prestige Estates Projects Limited	6-Jun-19	286.7	426	48.59%
Reliance Nippon	25-Nov-18	377	386.4	2.49%
Rites Ltd.	19-Dec-18	226.96	324.8	43.11%
RBL Bank	22-Nov-19	334	391.2	17.13%
State Bank Of India	28-Aug-18	308	373.8	21.36%
Shipping Corporation	22-Nov-19	64	65.95	3.05%
Tata Chemicals Limited	24-Dec-19	682.8	762	11.60%
Tata Global Beverages Ltd.	29-Jun-17	149.15	399.45	167.82%
Tata Consultancy Services Ltd.	8-Jan-18	1344.6	2296.2	70.77%
Trent Ltd.	19-Dec-18	348.4	611.95	75.65%
Ultratech Cement Ltd.	19-Dec-18	4084.6	4904.95	20.08%
Voltas Ltd.	27-Mar-18	613.9	730.95	19.07%
Whirlpool Of India Ltd.	7-Dec-16	872.25	2510	187.76%
Zee Entertainment	22-Nov-19	345	362	4.93%

NIFTY 50 STOCKS BELOW 200SMA

SCRIP NAME	SMA 200	CLOSING (07-02-2020)
WIPRO	260.42	243.95
ZEEL	317.76	249.75
LT	1394.89	1299.00
ITC	258.57	213.40
GRASIM	797.34	787.65
CIPLA	495.61	443.20
M&M	579.03	569.10
HEROMOTOCO	2554.13	2443.45
IOC	138.20	117.50
ONGC	140.58	109.25
VEDL	154.03	144.60
UPL	594.73	543.10
GAIL	137.79	123.00
INDUSINDBK	1431.80	1298.80
ADANI PORTS	386.95	369.55
POWERGRID	196.42	190.40
TCS	2154.43	2136.55
NTPC	123.22	115.60
YESBANK	83.05	38.70
COALINDIA	214.29	185.05
INFRA TEL	253.86	247.80

Bulk Deals (BSE)

Deal Date	Scrip Name	Client Name	Deal Type	Quantity	Price
7-Feb-20	AAVAS	LAKE DISTRICT HOLDINGS LIMITED	S	3660700	1,819.47
7-Feb-20	AAVAS	KOTAK FUNDSINDIA MIDCAP FUND	B	887082	1,818.00
7-Feb-20	AAVAS	AMERICAN FUNDS INSURANCE SERIES GLOBAL SMALL CAPITALIZATION FUND	B	402000	1,818.00
7-Feb-20	AAVAS	SMALLCAP WORLD FUND INC	B	1534000	1,818.00

Bulk Deals (NSE)

Deal Date	Scrip Name	Client Name	Deal Type	Quantity	Price
7-Feb-20	Sadbhav Engineering Limit	NORGES BANK AC GOVERNMENT PETROLEUM FUND	SELL	909000	117.92

Note- Executed on 07th Feb 2020. Bulk Deal Buy/Sell done by fund house is considered.

Weekly Expiry Most Active Nifty Call Option

Symbol	Expiry Date	Strike Price	Highest Open Interest (OI)
NIFTY	13-Feb-20	12200	1799550
NIFTY	13-Feb-20	12100	1398300
NIFTY	13-Feb-20	12300	1364850

Weekly Expiry Most Active Nifty Put Option

Symbol	Expiry Date	Strike Price	Highest Open Interest (OI)
NIFTY	13-Feb-20	12000	1699800
NIFTY	13-Feb-20	11800	1432875
NIFTY	13-Feb-20	11900	1324950

Securities in Ban For Trade Date 10-02-2020

YESBANK

Research Analyst Registration No.

INH000002764

Contact

SMS: 'Arihant' to 56677

Website

www.arihantcapital.com

mail Id

arihant.research@arihantcapital.com

**Arihant is Forbes Asia's '200 Best under a \$Billion' Company
'Best Emerging Commodities Broker' awarded by UTV Bloomberg**

Disclaimer: This document has been prepared by Arihant Capital Markets Limited (hereinafter called as Arihant) and its subsidiaries and associated companies. This document does not constitute an offer or solicitation for the purchase and sale of any financial instrument by Arihant. Receipt and review of this document constitutes your agreement not to circulate, redistribute, retransmit or disclose to others the contents, opinions, conclusion, or information contained herein. This document has been prepared and issued on the basis of publicly available information, internally developed data and other sources believed to be reliable. Whilst meticulous care has been taken to ensure that the facts stated are accurate and opinions given are fair and reasonable, neither the analyst nor any employee of our company is in any way is responsible for its contents and nor is its accuracy or completeness guaranteed. This document is prepared for assistance only and is not intended to be and must not alone be taken as the basis for an investment decision. All recipients of this material should before dealing and or transacting in any of the products referred to in this material make their own investigation, seek appropriate professional advice. The investments discussed in this material may not be suitable for all investors. The recipient alone shall be fully responsible/are liable for any decision taken on the basis of this material. Arihant Capital Markets Ltd (including its affiliates) or its officers, directors, personnel and employees, including persons involved in the preparation or issuance of this material may; (a) from time to time, have positions in, and buy or sell or (b) be engaged in any other transaction and earn brokerage or other compensation in the financial instruments/products discussed herein or act as advisor or lender/borrower in respect of such securities/financial instruments/products or have other potential conflict of interest with respect to any recommendation and related information and opinions. The said persons may have acted upon and/or in a manner contradictory with the information contained here and may have a position or be otherwise interested in the investment referred to in this document before its publication. The user of this report assumes the entire risk of any use made of this data/report. Arihant especially states that it has no financial liability, whatsoever, to the users of this report.

Arihant Capital Markets Ltd

#1011 Solitaire Corporate Park Building No.10 1st Floor
 Andheri Ghatkopar Link Road Chakala Andheri (E) Mumbai-400093
 T. 022-42254800. Fax: 022-42254880
www.arihantcapital.com