

To join our research group on TELEGRAM, please click on the links - <https://bit.ly/3HbUtQV> and <https://bit.ly/2YFpdbn>

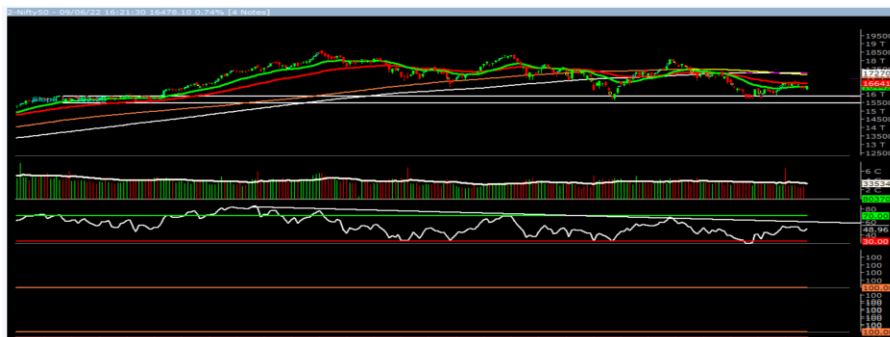
Friday, 10th Jun 2022

Indian Indices	Last Price	(%) Chg
NSE	16478.10	0.74
BSE	55320.28	0.78
World Indices	Last Price	(%) Chg
Dow Jones	32272.79	-1.94
Nasdaq	11754.23	-2.75
Nikkei	27828.99	-1.47
Hang Seng	21711.43	-0.72
FTSE	7476.21	-1.54
Commodity	Last Price	(%) Chg
GOLD(\$/ounce)	1848.40	-0.24
Silver (\$/Ounce)	21.65	-0.79
Crude (\$/BBL)	122.04	-0.84
Aluminium spot (\$/mt)	2762.00	-2.02
Copper SPOT (\$/mt)	9621.00	-1.12
Zinc (\$/MT)	3767.50	-1.41
Natural gas \$/MMBtu	9.01	0.52
Currency	Last Price	(%) Chg
USD-INR	77.73	0.05
EUR-INR	83.35	0.15
Bond	Last Price	(%) Chg
India 10 Yr Bond yield	7.49	0.04

52 Wk High (A group)			52 Wk Low (A group)		
Company	Close Price	52 Wk High	Company	Close Price	52 Wk Low
OIL	297	306	EQUITASH	87	86
--	--	--	GSPL	240	238
--	--	--	SHREECEM	19200	19088
--	--	--	VAKRANGE	26	26
--	--	--	--	--	--

Source: BSE

Market Technical Outlook



Nifty opened lower but witness smart buying in latter half of the session which led Nifty to close in green. On the daily chart, we are observing a bull candle which has closed above the 20-days SMA (16442). This suggests upside momentum. In coming trading session if Nifty trades above 16500 level then it may test 16600 – 16700 levels. On the downside, 16350 – 16230 level may act as support for the day.

We still continue to maintain our stance that the recent low of 15735 is the intermediate bottom and pull- back rally is in offing. Hence, one needs to adopt cautiously positive approach at current level.

Foreign Institutional Investments (FII's) Activities

Name of Segment	Net Buyer/seller	Rs In Cr
Index Futures	Net Sell	-871.66
Stock Futures	Net Buy	952.00
Net Future Position	Net Buy	80.34
Index Options	Net Buy	2392.01
Stock Options	Net Buy	84.81
Net Options Position	Net Buy	2476.82
FII In cash Segment	Net Sell	-1512.64
DII In cash Segment	Net Buy	1624.90
Net Cash Position	Net Buy	112.26

Guru Call: From the expert's desk

Company	Reco Date	Reco Price (Buy on dips)	High till date	Return%
Accelya Solutions India Ltd	10-Jun-21	1203.90	1539.40	27.87%
Aditya Birla Capital Ltd	13-Aug-21	206.60	210.95	2.11%
Aditya Birla Fashion and Retail Ltd	08-Feb-21	164.40	231.65	40.91%
Alkem	08-Jul-20	2427.00	3558.90	46.64%
Apcotex Industries Limited	13-Aug-21	342.90	350.05	2.09%
Asian Paints Ltd.	30-Mar-17	1068.10	3179.50	197.68%
Astec LifeSciences Limited	09-Jul-21	1360.70	1487.00	9.28%
Avenue Supermarts Ltd.	31-Jul-17	898.55	3448.95	283.84%
Axis Bank Ltd.	10-Apr-18	519.30	827.75	59.40%
Bajaj Finserv Ltd	1-Nov-16	3416.80	13110.00	283.69%
Bajaj Holdings And Investment Ltd	19-May-16	1499.10	4060.00	170.83%
Birla Corporation Limited	28-Jun-21	1240.00	1450.80	17.00%
Britannia	12-June-20	3366.00	4010.00	19.13%
Cadila	03-Apr-20	274.00	673.70	145.88%
CAMS	08-Oct-20	1334.90	3740.65	180.22%
CDSL	17-Sep-20	485.90	1579.00	224.96%
Century Textile and Industries Ltd	25-Nov-16	750.40	1471.20	96.06%
CESC Ltd	08-Jun-21	758.20	870.90	14.86%
CG Power and Industrial Solutions Ltd	10-Feb-21	45.25	91.95	103.20%
Chola finance	25-Sep-20	238.70	600.95	151.76%
Chola Holding	23-Sep-20	391.80	711.00	81.47%
Cipla Ltd	20-Mar-17	597.30	997.00	66.92%
Colgate Palmolive	16-Sep-19	1314.00	1794.85	36.59%
Dabur India	22-Oct-19	466.00	605.00	29.83%
DFM Foods Ltd	03-Feb-21	409.05	453.80	10.94%
DLF Ltd	10-Apr-19	194.30	338.80	74.37%
Dr Reddy	04-Aug-20	4530.00	5614.60	23.94%
Emami Limited	26-Jun-19	290.35	578.50	99.24%
Finolex Cables Ltd	08-Feb-21	368.80	557.70	51.22%
Firstsource Solutions Ltd	13-Aug-21	201.10	209.35	4.10%
Fortis	14-Jul-20	127.00	253.90	99.92%
Gati Ltd	13-Aug-21	148.90	154.20	3.56%
Gillette India Limited	11-Jun-21	5847.00	6249.00	6.88%
Glaxosmithkline Pharmaceuticals Ltd	27-Aug-20	1455.75	1807.50	24.16%
Godrej Consumer Products Limited	16-Jun-20	634.00	980.70	54.68%
HDFC Asset Management Company Ltd.	19-Dec-18	1572.90	3844.00	144.39%
HDFC Bank Limited	10-Nov-16	639.00	1641.00	156.81%
HDFC Life Insurance Co Ltd	19-Jan-18	485.05	746.00	53.80%
Hero Motocorp Ltd	29-Sep-20	3174.95	3629.05	14.30%
Hindustan Unilever Ltd.	13-Nov-17	1290.70	2614.30	102.55%
Housing Development Finance Corp Ltd	19-Dec-17	1720.00	2896.00	68.37%
ICICI Bank Ltd.	06-Apr-18	278.65	679.40	143.82%
ICICI Lombard General Insurance	19-Sep-19	1154.90	1626.45	40.83%
ICICI Prudential Life Insurance Company Ltd.	28-Jun-18	375.80	660.20	75.68%
ICICI Securities Ltd	24-Sep-20	466.65	802.00	71.86%
Indusindbnk	08-Jun-20	451.00	1119.50	148.23%
Infosys Ltd.	17-Aug-17	487.60	1596.85	227.49%
INOX Leisure Ltd	13-Aug-21	327.80	332.70	1.49%
Ion Exchange (India) Ltd	01-June-21	1464.95	2947.00	101.17%
Jubilant Ingrevia Ltd	22-Jul-21	623.00	640.00	2.73%
Kotak Mahindra Bank Ltd	10-Nov-16	822.10	2049.00	149.24%
L&T Finance Holdings Ltd	03-Dec-20	84.05	113.40	34.92%

Guru Call: From the expert's desk

Company	Reco Date	Reco Price (Buy on dips)	High till date	Return%
LIC Housing Finance Limited	06-Jan-21	408.30	542.45	32.86%
Mahanagar Gas	15-Nov-19	1029.00	1284.40	24.82%
Mahindra & Mahindra Ltd.	05-Jun-17	709.25	993.00	40.01%
Marico Ltd.	04-Apr-18	325.00	549.60	69.11%
Maruti Suzuki India Ltd	13-Aug-20	5988.85	8329.00	39.08%
Nestle India Ltd.	27-Sep-18	9729.40	18844.00	93.68%
NRB Bearings Limited	18-Jun-21	134.30	154.40	14.97%
Oberoi Realty Ltd.	23-Nov-17	508.60	729.00	43.33%
Oracle Financial Services Software Ltd.	13-Aug-21	4618.45	4789.00	3.69%
PEL	02-Sep-20	1246.25	2520.90	102.28%
Phoenix Mills Limited	07-Jul-19	655.15	979.00	49.43%
Pidilite Industries Limited	04-Oct-16	681.60	2333.95	242.42%
Poonawalla Fincorp Ltd	13-Aug-21	175.45	197.85	12.77%
Procter & Gamble Hygiene & Health Care	13-Aug-21	12869.65	13004.95	1.05%
PVR Limited	13-Aug-21	1412.25	1445.00	2.32%
Raymond	25-Sep-20	263.55	473.90	79.81%
RBL Bank	25-Sep-20	164.95	274.30	66.29%
Reliance	22-Apr-20	1351.00	2369.35	75.38%
Rites Ltd.	19-Dec-18	226.96	331.00	45.84%
SBI Card	16-Jul-20	719.00	1139.50	58.48%
SBI Life	20-May-20	715.00	1064.95	48.94%
Shilpa Medicare Ltd	20-Jul-21	661.75	668.90	1.08%
Shree Renuka Sugars Limited	13-Aug-21	26.80	28.10	4.85%
Solar Industries India Ltd	13-Aug-21	1760.05	1775.00	0.85%
State Bank of India	03-Feb-21	335.95	441.95	31.55%
Sun Pharma	07-Aug-20	525.00	721.85	37.50%
Sun TV Network Ltd.	13-Aug-21	525.35	538.00	2.41%
Syngene International Ltd	24-Sep-20	565.70	700.00	23.74%
Tata Chemicals Limited	24-Dec-19	296.89	833.95	180.90%
Tata Coffee Ltd.	28-Jun-21	183.35	198.65	8.34%
Tata Consultancy Services Ltd.	08-Jan-18	1344.60	3399.65	152.84%
Tata Consumer	29-Jun-17	149.15	786.85	427.56%
Trent Ltd.	19-Dec-18	348.40	947.95	172.09%
Ultratech Cement Ltd.	19-Dec-18	4084.60	7544.00	84.69%
UTI Asset Management Company Ltd	13-Aug-21	1043.75	1147.00	9.89%
Vedanta Ltd	28-Jun-21	260.80	276.15	5.89%
Voltas Ltd.	27-Mar-18	613.90	1132.00	84.39%
Whirlpool Of India Ltd.	07-Dec-16	872.25	2787.00	219.52%
Wipro Limited	13-Aug-21	615.50	639.20	3.85%
Zee Entertainment	22-Nov-19	345.00	362.00	4.93%
Zensar Technologies Limited	13-Aug-21	417.90	461.50	10.43
--	--	--	--	--
--	--	--	--	--
--	--	--	--	--
--	--	--	--	--
--	--	--	--	--
--	--	--	--	--
--	--	--	--	--
--	--	--	--	--
--	--	--	--	--
--	--	--	--	--
--	--	--	--	--
--	--	--	--	--
--	--	--	--	--
--	--	--	--	--
--	--	--	--	--
--	--	--	--	--
--	--	--	--	--
--	--	--	--	--

NIFTY 50 STOCKS BELOW 200SMA

SCRIP NAME	SMA 200	CLOSING (09-06-2022)
INFY	1719.06	1515
WIPRO	604.94	475.05
LT	1778.36	1595.1
HCLTECH	1169.06	1028.65
HINDUNILVR	2353.09	2197.7
TATASTEEL	1238.36	1044.85
SBIN	482.14	466.95
DRREDDY	4480.9	4322.9
GRASIM	1644.12	1309.1
TATAMOTORS	436.98	428.5
TATACONSUM	776.01	754.4
HDFC	2561.71	2265.45
HINDALCO	487.65	399.75
BPCL	391.67	332.85
ICICIBANK	742.03	732.75
HDFCBANK	1493.75	1377.7
BRITANNIA	3576.02	3347.25
ASIANPAINT	3161.09	2686.8
AXISBANK	738.87	661.3
TITAN	2353.99	2139.7
UPL	755.98	747.3
APOLLOHOSP	4614.16	3670.05
SHREECEM	25882.67	19198
INDUSINDBK	978.76	920.3
BAJFINANCE	7060.24	5898.55
BHARTIARTL	702.82	676.35
ADANIPTS	747.9	735.5
ULTRACEMCO	7067.2	5481.9
DIVISLAB	4560.67	3507.2
TCS	3638.44	3427.1
KOTAKBANK	1873.14	1865.2
TECHM	1460.96	1138.6
JSWSTEEL	664.73	572.2
BAJAJFINSV	16283.06	12471
NESTLEIND	18619.19	16768.15
HDFCLIFE	633.98	604.9
--	--	--
--	--	--
--	--	--
--	--	--

Weekly Expiry Most Active Nifty Call Option

Symbol	Expiry Date	Strike Price	Highest Open Interest (Contracts)
NIFTY	16-Jun-2022	17000	56,505
NIFTY	16-Jun-2022	16500	50,348
NIFTY	16-Jun-2022	16800	38,713

Weekly Expiry Most Active Nifty Put Option

Symbol	Expiry Date	Strike Price	Highest Open Interest (Contracts)
NIFTY	16-Jun-2022	16200	59,179
NIFTY	16-Jun-2022	16300	46,951
NIFTY	16-Jun-2022	16000	43,530

Securities in Ban For Trade Date 10-06-2022

DELTACORP

Bulk Deals (NSE)

Deal Date	Scrip Name	Client Name	Deal Type	Quantity	Price
9-Jun-22	HINDNATGLS	LT FINANCE LIMITED	SELL	650000	15.25

Bulk Deals (BSE)

Deal Date	Scrip Name	Client Name	Deal Type	Quantity	Price
9-Jun-22	GMRINFRA	DVI FUND MAURITIUS LIMITED	S	198417768	36.30
9-Jun-22	GMRINFRA	VEDA INVESTORS FUND L.P.	B	57587444	36.30
9-Jun-22	GMRINFRA	DECCAN VALUE INVESTORS FUND L.P.	B	43270501	36.30
9-Jun-22	GMRP&UI	DECCAN VALUE ADVISORS FUND IV	S	51250711	21.90
9-Jun-22	GMRP&UI	VEDA INVESTORS FUND L.P.	B	14874664	21.90
9-Jun-22	GMRP&UI	DVG 1740 FUND L.P.	B	5,275,918	21.90
9-Jun-22	GMRP&UI	H/D INVESTORS FUND L.P.	B	4,037,689	21.90
9-Jun-22	GMRP&UI	A/D INVESTORS FUND L.P.	B	7,701,856	21.90
9-Jun-22	GMRP&UI	C/D INVESTORS FUND L.P.	B	6,379,238	21.90
9-Jun-22	GMRP&UI	DECCAN VALUE INVESTORS FUND L.P.	B	11,176,651	21.90
9-Jun-22	HINDMOTORS	LIFESURE CONSULTANCY PRIVATE LIMITED	S	3274010	22.10

Note- Executed on 09th Jun 2022. Bulk Deal Buy/Sell done by fund house is considered.

Research Analyst Registration No.

INH000002764

Contact

SMS: 'Arihant' to 56677

Website

www.arihantcapital.com

mail Id

arihant.research@arihantcapital.com

**Arihant is Forbes Asia's '200 Best under a \$Billion' Company
'Best Emerging Commodities Broker' awarded by UTV Bloomberg**

Disclaimer: This document has been prepared by Arihant Capital Markets Limited (hereinafter called as Arihant) and its subsidiaries and associated companies. This document does not constitute an offer or solicitation for the purchase and sale of any financial instrument by Arihant. Receipt and review of this document constitutes your agreement not to circulate, redistribute, retransmit or disclose to others the contents, opinions, conclusion, or information contained herein. This document has been prepared and issued on the basis of publicly available information, internally developed data and other sources believed to be reliable. Whilst meticulous care has been taken to ensure that the facts stated are accurate and opinions given are fair and reasonable, neither the analyst nor any employee of our company is in any way is responsible for its contents and nor is its accuracy or completeness guaranteed. This document is prepared for assistance only and is not intended to be and must not alone be taken as the basis for an investment decision. All recipients of this material should before dealing and or transacting in any of the products referred to in this material make their own investigation, seek appropriate professional advice. The investments discussed in this material may not be suitable for all investors. The recipient alone shall be fully responsible/are liable for any decision taken on the basis of this material. Arihant Capital Markets Ltd (including its affiliates) or its officers, directors, personnel and employees, including persons involved in the preparation or issuance of this material may; (a) from time to time, have positions in, and buy or sell or (b) be engaged in any other transaction and earn brokerage or other compensation in the financial instruments/products discussed herein or act as advisor or lender/borrower in respect of such securities/financial instruments/products or have other potential conflict of interest with respect to any recommendation and related information and opinions. The said persons may have acted upon and/or in a manner contradictory with the information contained here and may have a position or be otherwise interested in the investment referred to in this document before its publication. The user of this report assumes the entire risk of any use made of this data/report. Arihant especially states that it has no financial liability, whatsoever, to the users of this report.

Arihant Capital Markets Ltd

#1011 Solitaire Corporate Park Building No.10 1st Floor
Andheri Ghatkopar Link Road Chakala Andheri (E) Mumbai-400093
T. 022-42254800. Fax: 022-42254880
www.arihantcapital.com