

To join our research group on TELEGRAM, please click on the links - <https://bit.ly/37T17JR> and <https://bit.ly/2svtU7k>

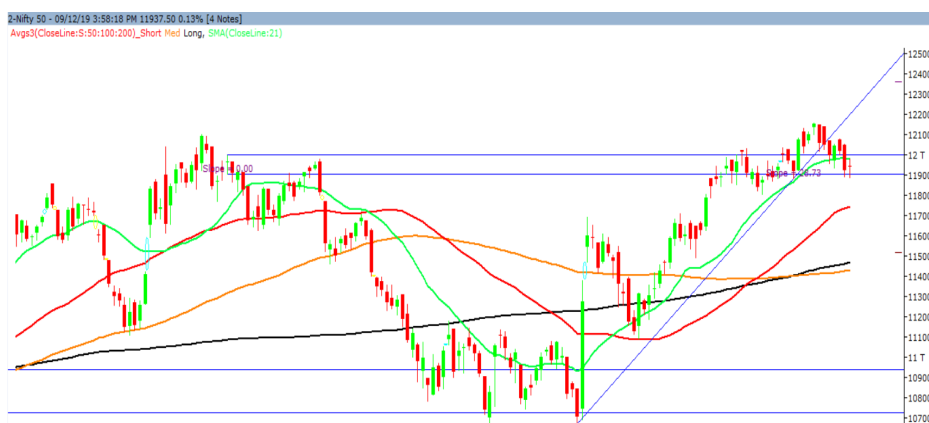
Tuesday, 10th December, 2019

Indian Indices	Last Price	(%) Chg
BSE	40487.43	0.10
NSE	11936.95	0.13
World Indices		
Dow Jones	27909.60	-0.38
Nasdaq	8621.83	-0.40
Nikkei	23432.33	0.01
Hang Seng	26519.76	0.09
FTSE	7233.90	-0.08
Commodity	Last Price	(%) Chg
GOLD(\$/ounce)	1465.60	0.05
Silver (\$/Ounce)	16.66	0.08
Crude (\$/BBL)	64.14	-0.17
Aluminium spot (\$/mt)	1758.00	-0.10
Copper SPOT (\$/mt)	6063.75	-0.29
Lead Spot (\$/MT)	1897.50	0.09
Natural gas \$/MMBtu	2.24	0.40
Currency	Last Price	(%) Chg
USD-INR	71.04	-0.22
EUR-INR	78.66	-0.44
Bond	Last Price	(%) Chg
India 10 Yr Bond yield	6.66	0.03

52 Wk High (A group)			52 Wk Low (A group)		
Company	Close Price	52 Wk High	Company	Close Price	52 Wk Low
ADANTR	330	344	ARVIND	37.1	37.0
BFUTILI	335	335	CHENPET	115	112
COROMA	507	527	CUMMIN	530	515
GUJGAS	230	231	GAIL	116	115
SRF	3237	3285	GSFC	66.7	66.6

Source: BSE

Market Technical Outlook



Nifty opened higher traded in a narrow range with choppiness but finally closed with minor gains. On the daily chart, we are observing two consecutive closes below the 21-day SMA (11977) which indicates weakness. Hence, we advised to adopt cautious approach at current level.

In coming trading session if Nifty open in the range of 11965 – 11994 levels then go short with a stop loss of 12010 for a target of 11915 – 11901 - 11879 levels.

News for stocks

HERO MOTOCORP	Company has announced that it will increase the price of its motorcycles and scooters from January 1, 2020 by around INR 2,000 depending upon the model along with market geography.
HDFC	HDFC will acquire 1.15 crore shares or 9.12 percent equity of HDFC Credila Financial Services from its promoters Ajay Bohora and Anil Bohora for a total consideration up to Rs 395 crore.
MPHASIS	Mphasis clarifies that the USD 990 million Minimum Revenue Commitment (MRC) with DXC starting from September, 2016 is not a cumulative calculation. Mphasis and DXC continues to be Strategic Partners.

Foreign Institutional Investments (FII's) Activities

Name of Segment	Net Buyer/seller	Rs In Cr
Index Futures	Net Buy	15.30
Stock Futures	Net Buy	667.26
Net Future Position	Net Buy	682.56
Index Options	Net Buy	683.05
Stock Options	Net Buy	23.66
Net Options Position	Net Buy	706.71
FII In cash Segment	Net Buy	459.22
DII In cash Segment	Net Buy	74.93
Net Cash Position	Net Buy	534.15

Technical Levels for Nifty 50 Companies

Company	Closing 09-12-2019	Buy/Sell Trigger	Resistance 1	Resistance 2	Support 1	Support 2
ADANI PORTS	373.60	372.02	379.08	384.57	366.53	359.47
ASIAN PAINT	1726.35	1723.42	1735.83	1745.32	1713.93	1701.52
AXIS BANK	732.00	725.30	740.60	749.20	716.70	701.40
BAJAJ-AUTO	3225.55	3222.57	3242.83	3260.12	3205.28	3185.02
BAJAJ FINSV	8929.00	8914.93	9008.82	9088.63	8835.12	8741.23
BAJFINANCE	3944.85	3932.18	3984.12	4023.38	3892.92	3840.98
BHARTIARTL	445.85	446.38	451.07	456.28	441.17	436.48
BPCL	499.65	495.67	505.78	511.92	489.53	479.42
BRITANNIA	3058.40	3063.55	3079.65	3100.90	3042.30	3026.20
CIPLA	447.90	450.08	455.57	463.23	442.42	436.93
COALINDIA	191.65	192.08	193.17	194.68	190.57	189.48
DRREDDY	2908.75	2914.22	2936.53	2964.32	2886.43	2864.12
EICHERMOT	20997.15	21021.75	21174.40	21351.65	20844.50	20691.85
GAIL	116.20	116.40	117.60	119.00	115.00	113.80
GRASIM	766.30	767.55	772.75	779.20	761.10	755.90
HCLTECH	552.05	554.08	561.17	570.28	544.97	537.88
HDFC	2311.40	2295.63	2331.22	2351.03	2275.82	2240.23
HDFCBANK	1242.95	1243.45	1249.35	1255.75	1237.05	1231.15
HEROMOTOCO	2381.75	2378.78	2397.97	2414.18	2362.57	2343.38
HINDALCO	198.85	199.40	201.70	204.55	196.55	194.25
HINDUNILVR	2008.15	2010.47	2029.73	2051.32	1988.88	1969.62
ICICIBANK	526.50	526.00	529.80	533.10	522.70	518.90
INDUSINDBK	1450.00	1460.07	1474.78	1499.57	1435.28	1420.57
INFRA TEL	260.40	258.30	264.10	267.80	254.60	248.80
INFY	717.25	717.95	721.65	726.05	713.55	709.85
IOC	125.50	125.42	126.43	127.37	124.48	123.47
ITC	241.45	241.92	242.83	244.22	240.53	239.62
JSWSTEEL	258.85	256.73	261.62	264.38	253.97	249.08
KOTAK BANK	1659.25	1664.92	1673.33	1687.42	1650.83	1642.42
LT	1276.00	1282.23	1292.67	1309.33	1265.57	1255.13
M&M	513.65	514.07	518.08	522.52	509.63	505.62
MARUTI	6994.75	7018.37	7084.38	7174.02	6928.73	6862.72
NESTLEIND	14232.50	14168.83	14332.67	14432.83	14068.67	13904.83
NTPC	112.70	112.47	113.43	114.17	111.73	110.77
ONGC	126.30	126.57	127.53	128.77	125.33	124.37
POWERGRID	187.95	187.45	189.35	190.75	186.05	184.15
RELIANCE	1572.60	1565.50	1584.50	1596.40	1553.60	1534.60
SBIN	316.70	319.70	324.65	332.60	311.75	306.80
SUNPHARMA	427.00	428.40	433.20	439.40	422.20	417.40
TATAMOTORS	160.50	162.23	164.72	168.93	158.02	155.53
TATASTEEL	406.70	406.82	411.68	416.67	401.83	396.97
TCS	2060.45	2080.63	2107.77	2155.08	2033.32	2006.18
TECHM	750.35	752.10	757.70	765.05	744.75	739.15
TITAN	1178.05	1176.63	1187.42	1196.78	1167.27	1156.48
ULTRACEMCO	4151.45	4154.82	4188.63	4225.82	4117.63	4083.82
UPL	563.55	566.15	571.90	580.25	557.80	552.05
VEDL	142.60	143.40	144.70	146.80	141.30	140.00
WIPRO	240.40	240.22	241.83	243.27	238.78	237.17
YES BANK	56.25	56.28	58.82	61.38	53.72	51.18
ZEEL	284.15	288.12	293.03	301.92	279.23	274.32

(Source – IRIS)

Guru Call: From the expert's desk

Company	Reco Date	Reco Price (Buy on dips)	High till date	Return%
Aditya Birla Capital	22-Nov-19	95.75	114.00	19.06%
Asian Paints Ltd.	30-Mar-17	1068.10	1834.00	71.71%
Avenue Supermarts Ltd.	31-Jul-17	898.55	2010.00	123.69%
Axis Bank Ltd.	10-Apr-18	519.30	827.00	59.25%
Bajaj Finance Ltd.	11-Oct-18	2271.00	4280.00	88.46%
Bajaj Finserv Ltd	1-Nov-16	3416.80	9284.00	171.72%
Bajaj Holdings And Investment Ltd	19-May-16	1499.10	3903.00	160.36%
Bandhan Bank Ltd.	19-Dec-18	556.40	650.00	16.82%
Bharat Petroleum Corporation Ltd.	23-Oct-19	531.50	549.00	3.29%
Century Textile and Industries Ltd	25-Nov-16	326.00	491.00	50.61%
Cipla Ltd	20-Mar-17	597.30	678.50	13.59%
Colgate Palmolive	16-Sep-19	1314.00	1642.00	24.96%
Container Corporation	22-Nov-19	577.00	603.00	4.51%
Dabur India	22-Oct-19	466.00	487.00	4.51%
DLF Ltd	10-Apr-19	194.30	226.60	16.62%
Emami Limited	26-Jun-19	290.35	355.00	22.27%
Godrej Industries Ltd.	12-Feb-18	550.70	657.60	19.41%
Godrej Properties Ltd.	19-Dec-18	685.30	1119.60	63.37%
Grasim Industries Ltd.	31-May-17	1132.50	1331.00	17.53%
Havells India Ltd.	8-Dec-17	525.75	806.85	53.47%
Housing Development Finance Corp Ltd	19-Dec-17	1720.00	2357.90	37.09%
HDFC Asset Management Company Ltd.	19-Dec-18	1572.90	3844.00	144.39%
HDFC Bank Limited	10-Nov-16	639.00	1287.00	101.41%
HDFC Life Insurance Co Ltd	19-Jan-18	485.05	646.00	33.18%
Hindustan Unilever Ltd.	13-Nov-17	1290.70	2190.00	69.68%
ICICI Bank Ltd.	6-Apr-18	278.65	537.50	92.89%
ICICI Prudential Life Insurance Company Ltd.	28-Jun-18	375.80	537.00	42.90%
ICICI Lombard General Insurance	19-Sep-19	1154.90	1399.00	21.14%
Infosys Ltd.	17-Aug-17	487.60	847.00	73.71%
Kotak Mahindra Bank Ltd	10-Nov-16	822.10	1683.00	104.72%
Mahindra & Mahindra Ltd.	5-Jun-17	709.25	993.00	40.01%
Manappuram Finance Ltd.	24-Apr-18	119.20	173.00	45.13%
Mahanagar Gas	15-Nov-19	1029.00	1064.00	3.40%
Marico Ltd.	4-Apr-18	325.00	404.00	24.31%
Nestle India Ltd.	27-Sep-18	9729.40	15146.00	55.67%
Oberoi Realty Ltd.	23-Nov-17	508.60	641.70	26.17%
Phoenix Mills Limited	7-Jul-19	655.15	797.00	21.65%
Pidilite Industries Limited	4-Oct-16	681.60	1493.00	119.04%
Prestige Estates Projects Limited	6-Jun-19	286.70	363.90	26.93%
Reliance Nippon	25-Nov-18	377.00	386.40	2.49%
Rites Ltd.	19-Dec-18	226.96	324.00	42.76%
RBL Bank	22-Nov-19	334.00	391.00	17.07%
State Bank Of India	28-Aug-18	308.00	373.80	21.36%
Shipping Corporation	22-Nov-19	64.00	63.00	-1.56%
Tata Global Beverages Ltd.	29-Jun-17	149.15	328.80	120.45%
Tata Consultancy Services Ltd.	8-Jan-18	1344.60	2296.00	70.76%
Trent Ltd.	19-Dec-18	348.40	567.90	63.00%
Ultratech Cement Ltd.	19-Dec-18	4084.60	4904.00	20.06%
Voltas Ltd.	27-Mar-18	613.90	725.00	18.10%
Whirlpool Of India Ltd.	7-Dec-16	872.25	2448.00	180.65%
Zee Entertainment	22-Nov-19	345.00	362.00	4.93%

NIFTY 50 STOCKS BELOW 200SMA

SCRIP NAME	SMA 200	CLOSING (09-12-2019)
INFY	745.70	716.05
WIPRO	265.53	240.45
ZEEL	353.80	284.20
LT	1399.87	1274.00
ITC	270.54	241.00
TATASTEEL	445.82	406.00
GRASIM	805.68	765.90
CIPLA	511.73	449.50
M&M	604.76	514.00
HEROMOTOCO	2611.58	2379.00
IOC	144.21	125.55
ONGC	147.22	126.35
VEDL	159.16	142.70
UPL	600.99	562.75
GAIL	148.61	116.25
INDUSINDBK	1481.17	1450.00
ADANIPTS	383.29	373.40
POWERGRID	196.37	188.30
ULTRACEMCO	4228.97	4160.00
TCS	2121.00	2060.00
NTPC	125.54	113.00
YESBANK	127.07	56.30
COALINDIA	222.19	191.65
INFRADEL	268.25	260.45

Securities in Ban For Trade Date 10-12-2019

YESBANK

Weekly Expiry Most Active Nifty Call Option

Symbol	Expiry Date	Strike Price	Highest Open Interest (OI)
NIFTY	12-Dec-19	12000	2620350
NIFTY	12-Dec-19	12100	2358150
NIFTY	12-Dec-19	12200	1646400

Weekly Expiry Most Active Nifty Put Option

Symbol	Expiry Date	Strike Price	Highest Open Interest (OI)
NIFTY	12-Dec-19	11900	2022375
NIFTY	12-Dec-19	11800	1459125
NIFTY	12-Dec-19	11500	1440225

Bulk Deals (NSE)

N/A.

Bulk Deals (BSE)

Deal Date	Scrip Name	Client Name	Deal Type	Quantity	Price
9-Dec-19	APOLLOTRI	IIFL MUTUAL FUND AC IIFL FOCUSED EQUITY FUND	B	358181	265.00
9-Dec-19	APOLLOTRI	DINESH PAREEKH	S	365000	265.35

 Note- Executed on 09th Dec 2019. Bulk Deal Buy/Sell done by fund house is considered.

Research Analyst Registration No.	Contact	Website	mail Id
INH000002764	SMS: 'Arihant' to 56677	www.arihantcapital.com	arihant.research@arihantcapital.com

**Arihant is Forbes Asia's '200 Best under a \$Billion' Company
 'Best Emerging Commodities Broker' awarded by UTV Bloomberg**

Disclaimer: This document has been prepared by Arihant Capital Markets Limited (hereinafter called as Arihant) and its subsidiaries and associated companies. This document does not constitute an offer or solicitation for the purchase and sale of any financial instrument by Arihant. Receipt and review of this document constitutes your agreement not to circulate, redistribute, retransmit or disclose to others the contents, opinions, conclusion, or information contained herein. This document has been prepared and issued on the basis of publicly available information, internally developed data and other sources believed to be reliable. Whilst meticulous care has been taken to ensure that the facts stated are accurate and opinions given are fair and reasonable, neither the analyst nor any employee of our company is in any way is responsible for its contents and nor is its accuracy or completeness guaranteed. This document is prepared for assistance only and is not intended to be and must not alone be taken as the basis for an investment decision. All recipients of this material should before dealing and or transacting in any of the products referred to in this material make their own investigation, seek appropriate professional advice. The investments discussed in this material may not be suitable for all investors. The recipient alone shall be fully responsible/are liable for any decision taken on the basis of this material. Arihant Capital Markets Ltd (including its affiliates) or its officers, directors, personnel and employees, including persons involved in the preparation or issuance of this material may; (a) from time to time, have positions in, and buy or sell or (b) be engaged in any other transaction and earn brokerage or other compensation in the financial instruments/products discussed herein or act as advisor or lender/borrower in respect of such securities/financial instruments/products or have other potential conflict of interest with respect to any recommendation and related information and opinions. The said persons may have acted upon and/or in a manner contradictory with the information contained here and may have a position or be otherwise interested in the investment referred to in this document before its publication. The user of this report assumes the entire risk of any use made of this data/report. Arihant especially states that it has no financial liability, whatsoever, to the users of this report.

Arihant Capital Markets Ltd

#1011 Solitaire Corporate Park Building No.10 1st Floor
 Andheri Ghatkopar Link Road Chakala Andheri (E) Mumbai-400093
 T. 022-42254800. Fax: 022-42254880
www.arihantcapital.com