

To join our research group on TELEGRAM, please click on the links - <https://bit.ly/37T17JR> and <https://bit.ly/2svtU7k>

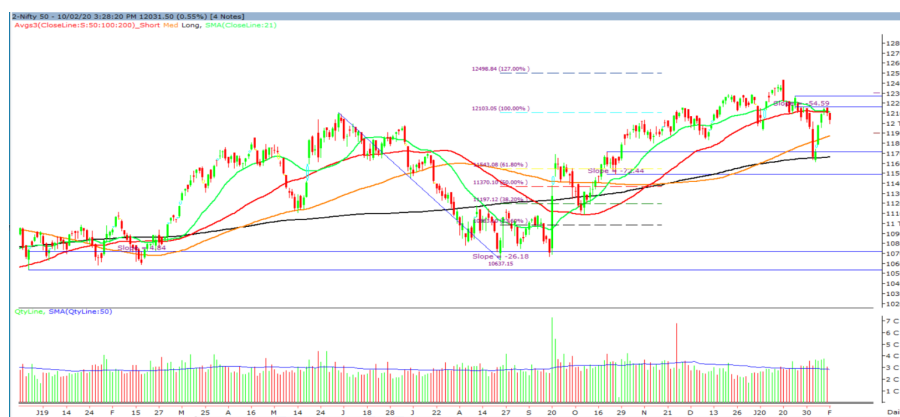
Tuesday, 11th February, 2020

Indian Indices	Last Price	(%) Chg
BSE	40979.62	-0.12
NSE	12031.50	-0.55
World Indices		
Dow Jones	29276.82	0.60
Nasdaq	9628.39	1.13
Nikkei	--	--
Hang Seng	27630.13	1.45
FTSE	7446.88	-0.27
Commodity	Last Price	(%) Chg
GOLD(\$/ounce)	1572.10	-0.47
Silver (\$/Ounce)	17.72	-0.34
Crude (\$/BBL)	54.07	1.50
Aluminium spot (\$/mt)	1720.25	0.88
Copper SPOT (\$/mt)	5732.00	1.29
Lead Spot (\$/MT)	1817.75	0.76
Natural gas \$/MMBtu	1.77	0.28
Currency	Last Price	(%) Chg
USD-INR	71.40	-0.17
EUR-INR	78.36	-0.12
Bond	Last Price	(%) Chg
India 10 Yr Bond yield	6.44	0.05

52 Wk High (A group)			52 Wk Low (A group)		
Company	Close Price	52 Wk High	Company	Close Price	52 Wk Low
ADANI	244	245	ALBK	16.4	16.0
AJANTAP	1401	1401	--	--	--
ALKEM	2594	2698	--	--	--
BAJAJFIN	4720	4735	--	--	--
DIVISLA	2080	2112	--	--	--

Source: BSE

Market Technical Outlook



Nifty opened on a subdued note traded and momentum on the downside intensified as the day progressed which led the indices to close in red. On the daily chart, we are observing two consecutive bear candle below the 50-daySMA (12112). We maintain our stance that 12112 remains crucial resistance. Any close above 12112 would propel Nifty to test 12180 – 12250 levels in couple of days. On the downside, 11980 -11930 levels may act as support for the day. **We reiterate our view that one needs to adopt cautious approach at current levels and wait for more confirmation of trend reversal. However, Stock activity is likely to continue.**

News for stocks

INFOEDGE	Info-Edge to acquire up to 25% stake in Sunrise Mentors for Rs 37.1 crore
CADILA	Cadila Healthcare has received establishment inspection report (EIR) from the US health regulator after inspection of its Ahmedabad facility. The facility completed the USFDA audit from December 16 to 20, 2019 with zero observations.

Foreign Institutional Investments (FII's) Activities

Name of Segment	Net Buyer/seller	Rs In Cr
Index Futures	Net Sell	-409.52
Stock Futures	Net Buy	344.00
Net Future Position	Net Sell	-65.52
Index Options	Net Buy	1439.97
Stock Options	Net Buy	50.12
Net Options Position	Net Buy	1490.09
FII In cash Segment	Net Sell	-184.58
DII In cash Segment	Net Sell	-735.79
Net Cash Position	Net Sell	-920.37

Technical Levels for Nifty 50 Companies

Company	Closing 10-02-2020	Buy/Sell Trigger	Resistance 1	Resistance 2	Support 1	Support 2
ADANI PORTS	368.25	369.28	372.42	376.58	365.12	361.98
ASIANPAINT	1869.5	1859.82	1882.43	1895.37	1846.88	1824.27
AXISBANK	741.1	742.3	745.6	750.1	737.8	734.5
BAJAJ-AUTO	3103.3	3115.28	3138.87	3174.43	3079.72	3056.13
BAJAJFINSV	9627	9605.32	9679.63	9732.27	9552.68	9478.37
BAJFINANCE	4721.75	4698.58	4757.17	4792.58	4663.17	4604.58
BHARTIARTL	538.7	539.48	542.87	547.03	535.32	531.93
BPCL	485.45	488.12	492.88	500.32	480.68	475.92
BRITANNIA	3155.6	3186.87	3248.73	3341.87	3093.73	3031.87
CIPLA	444.75	445.95	449.8	454.85	440.9	437.05
COALINDIA	178.85	180.5	183.35	187.85	176	173.15
DRREDDY	3149.1	3145.12	3177.23	3205.37	3116.98	3084.87
EICHERMOT	19057.25	19234.08	19678.17	20299.08	18613.17	18169.08
GAIL	121.8	121.8	124.35	126.9	119.25	116.7
GRASIM	757.55	766.42	780.83	804.12	743.13	728.72
HCLTECH	604.9	606.03	610.42	615.93	600.52	596.13
HDFC	2414.3	2410.22	2429.38	2444.47	2395.13	2375.97
HDFCBANK	1240.3	1236.43	1246.82	1253.33	1229.92	1219.53
HEROMOTOCO	2385.7	2406.1	2437.05	2488.4	2354.75	2323.8
HINDALCO	190.85	192.47	195.33	199.82	187.98	185.12
HINDUNILVR	2159.3	2166.85	2182	2204.7	2144.15	2129
ICICIBANK	533.95	535.57	540.63	547.32	528.88	523.82
INDUSINDBK	1274.95	1282.48	1296.47	1317.98	1260.97	1246.98
INFRA TEL	239.8	243.62	248.93	258.07	234.48	229.17
INFY	773.2	773.65	777.55	781.9	769.3	765.4
IOC	115.8	116.47	117.68	119.57	114.58	113.37
ITC	210.55	211.55	213.05	215.55	209.05	207.55
JSWSTEEL	277.9	276.97	280.73	283.57	274.13	270.37
KOTAKBANK	1669.3	1663.2	1680.7	1692.1	1651.8	1634.3
LT	1285.3	1286.95	1300.8	1316.3	1271.45	1257.6
M&M	528.4	540.48	554.92	581.43	513.97	499.53
MARUTI	6892.9	6911.03	6970.97	7049.03	6832.97	6773.03
NESTLEIND	16172.2	16219.1	16326.2	16480.2	16065.1	15958
NTPC	113.5	113.82	115.58	117.67	111.73	109.97
ONGC	106.2	107.03	108.32	110.43	104.92	103.63
POWERGRID	186.6	187.48	190.22	193.83	183.87	181.13
RELIANCE	1435.6	1430.52	1450.58	1465.57	1415.53	1395.47
SBIN	318.5	319.27	322.03	325.57	315.73	312.97
SUNPHARMA	420.3	423.78	429.27	438.23	414.82	409.33
TATAMOTORS	168.9	170.03	172.07	175.23	166.87	164.83
TATASTEEL	443.8	449.02	458.03	472.27	434.78	425.77
TCS	2161.95	2149.32	2179.63	2197.32	2131.63	2101.32
TECHM	813.65	817.42	823.33	833.02	807.73	801.82
TITAN	1257.2	1261.85	1270.35	1283.5	1248.7	1240.2
ULTRACEMCO	4413.75	4432.37	4473.98	4534.22	4372.13	4330.52
UPL	574.1	569.8	583.9	593.7	560	545.9
VEDL	140.3	141.18	142.82	145.33	138.67	137.03
WIPRO	240.9	242	244.55	248.2	238.35	235.8
YESBANK	37.55	38.47	39.83	42.12	36.18	34.82
ZEEL	230.45	236.1	244.1	257.75	222.45	214.45

(Source – IRIS)

Guru Call: From the expert's desk

Company	Reco Date	Reco Price (Buy on dips)	High till date	Return%
Aditiya Birla Capital	22-Nov-19	95.75	115.35	20.47%
Asian Paints Ltd.	30-Mar-17	1068.1	1862.25	74.35%
Avenue Supermarts Ltd.	31-Jul-17	898.55	2010	123.69%
Axis Bank Ltd.	10-Apr-18	519.3	827.75	59.40%
Bajaj Finance Ltd.	11-Oct-18	2271	4295.75	89.16%
Bajaj Finserv Ltd	1-Nov-16	3416.8	9764.35	185.77%
Bajaj Holdings And Investment Ltd	19-May-16	1499.1	3903.95	160.42%
Bandhan Bank Ltd.	19-Dec-18	556.4	650	16.82%
Bharat Petroleum Corporation Ltd.	23-Oct-19	531.5	549	3.29%
Century Textile and Industries Ltd	25-Nov-16	326	634	94.48%
Cipla Ltd	20-Mar-17	597.3	678.45	13.59%
Colgate Palmolive	16-Sep-19	1314	1642.6	25.01%
Container Corporation	22-Nov-19	577	603	4.51%
Dabur India	22-Oct-19	466	501	7.51%
DLF Ltd	10-Apr-19	194.3	265.9	36.85%
Emami Limited	26-Jun-19	290.35	357.7	23.20%
Godrej Industries Ltd.	12-Feb-18	550.7	657.6	19.41%
Godrej Properties Ltd.	19-Dec-18	685.3	1119.6	63.37%
Grasim Industries Ltd.	31-May-17	1132.5	1331	17.53%
Havells India Ltd.	8-Dec-17	525.75	806.85	53.47%
Housing Development Finance Corp Ltd	19-Dec-17	1720	2499.9	45.34%
HDFC Asset Management Company Ltd.	19-Dec-18	1572.9	3844	144.39%
HDFC Bank Limited	10-Nov-16	639	1305.5	104.30%
HDFC Life Insurance Co Ltd	19-Jan-18	485.05	646.4	33.26%
Hindustan Unilever Ltd.	13-Nov-17	1290.7	2190	69.68%
ICICI Bank Ltd.	6-Apr-18	278.65	552.2	98.17%
ICICI Prudential Life Insurance Company Ltd.	28-Jun-18	375.8	537.3	42.97%
ICICI Lombard General Insurance	19-Sep-19	1154.9	1440.4	24.72%
Infosys Ltd.	17-Aug-17	487.6	847	73.71%
Kansai Nerolac Paints	16-Dec-19	529.85	551	3.99%
Kotak Mahindra Bank Ltd	10-Nov-16	822.1	1734.8	111.02%
Mahindra & Mahindra Ltd.	5-Jun-17	709.25	993	40.01%
Manappuram Finance Ltd.	24-Apr-18	119.2	189	58.56%
Mahanagar Gas	15-Nov-19	1029	1198	16.42%
Marico Ltd.	4-Apr-18	325	404	24.31%
Nestle India Ltd.	27-Sep-18	9729.4	15850	62.91%
Oberoi Realty Ltd.	23-Nov-17	508.6	641.7	26.17%
Phoenix Mills Limited	7-Jul-19	655.15	900	37.37%
Pidilite Industries Limited	4-Oct-16	681.6	1493.5	119.12%
Prestige Estates Projects Limited	6-Jun-19	286.7	426	48.59%
Reliance Nippon	25-Nov-18	377	386.4	2.49%
Rites Ltd.	19-Dec-18	226.96	324.8	43.11%
RBL Bank	22-Nov-19	334	391.2	17.13%
State Bank Of India	28-Aug-18	308	373.8	21.36%
Shipping Corporation	22-Nov-19	64	65.95	3.05%
Tata Chemicals Limited	24-Dec-19	682.8	762	11.60%
Tata Global Beverages Ltd.	29-Jun-17	149.15	399.45	167.82%
Tata Consultancy Services Ltd.	8-Jan-18	1344.6	2296.2	70.77%
Trent Ltd.	19-Dec-18	348.4	611.95	75.65%
Ultratech Cement Ltd.	19-Dec-18	4084.6	4904.95	20.08%
Voltas Ltd.	27-Mar-18	613.9	730.95	19.07%
Whirlpool Of India Ltd.	7-Dec-16	872.25	2510	187.76%
Zee Entertainment	22-Nov-19	345	362	4.93%

NIFTY 50 STOCKS BELOW 200SMA

SCRIP NAME	SMA 200	CLOSING (10-02-2020)
WIPRO	260.2	240.9
ZEEL	316.91	230.45
LT	1394.51	1285.3
ITC	258.1	210.55
GRASIM	796.79	757.55
CIPLA	495.03	444.75
M&M	578.25	528.4
HINDALCO	196.31	190.85
HEROMOTOCO	2552.35	2385.7
SUNPHARMA	422.52	420.3
IOC	137.99	115.8
ONGC	140.31	106.2
VEDL	153.84	140.3
UPL	594.48	574.1
GAIL	137.52	121.8
EICHERMOT	19625.59	19057.25
INDUSINDBK	1429.35	1274.95
ADANIPTS	386.84	368.25
POWERGRID	196.38	186.6
NTPC	123.11	113.5
YESBANK	81.95	37.55
COALINDIA	213.93	178.85
INFRADEL	253.53	239.8

Bulk Deals (BSE)

N.A

Bulk Deals (NSE)

N.A

 Note- Executed on 10th Feb 2020. Bulk Deal Buy/Sell done by fund house is considered.

Weekly Expiry Most Active Nifty Call Option

Symbol	Expiry Date	Strike Price	Highest Open Interest (OI)
NIFTY	13-Feb-20	12100	2822175
NIFTY	13-Feb-20	12200	2431425
NIFTY	13-Feb-20	12300	1673550

Weekly Expiry Most Active Nifty Put Option

Symbol	Expiry Date	Strike Price	Highest Open Interest (OI)
NIFTY	13-Feb-20	12000	2253525
NIFTY	13-Feb-20	11800	1719900
NIFTY	13-Feb-20	11900	1579125

Securities in Ban For Trade Date 11-02-2020

YESBANK

Research Analyst Registration No.

INH000002764

Contact

SMS: 'Arihant' to 56677

Website

www.arihantcapital.com

mail Id

arihant.research@arihantcapital.com

**Arihant is Forbes Asia's '200 Best under a \$Billion' Company
'Best Emerging Commodities Broker' awarded by UTV Bloomberg**

Disclaimer: This document has been prepared by Arihant Capital Markets Limited (hereinafter called as Arihant) and its subsidiaries and associated companies. This document does not constitute an offer or solicitation for the purchase and sale of any financial instrument by Arihant. Receipt and review of this document constitutes your agreement not to circulate, redistribute, retransmit or disclose to others the contents, opinions, conclusion, or information contained herein. This document has been prepared and issued on the basis of publicly available information, internally developed data and other sources believed to be reliable. Whilst meticulous care has been taken to ensure that the facts stated are accurate and opinions given are fair and reasonable, neither the analyst nor any employee of our company is in any way is responsible for its contents and nor is its accuracy or completeness guaranteed. This document is prepared for assistance only and is not intended to be and must not alone be taken as the basis for an investment decision. All recipients of this material should before dealing and or transacting in any of the products referred to in this material make their own investigation, seek appropriate professional advice. The investments discussed in this material may not be suitable for all investors. The recipient alone shall be fully responsible/are liable for any decision taken on the basis of this material. Arihant Capital Markets Ltd (including its affiliates) or its officers, directors, personnel and employees, including persons involved in the preparation or issuance of this material may; (a) from time to time, have positions in, and buy or sell or (b) be engaged in any other transaction and earn brokerage or other compensation in the financial instruments/products discussed herein or act as advisor or lender/borrower in respect of such securities/financial instruments/products or have other potential conflict of interest with respect to any recommendation and related information and opinions. The said persons may have acted upon and/or in a manner contradictory with the information contained here and may have a position or be otherwise interested in the investment referred to in this document before its publication. The user of this report assumes the entire risk of any use made of this data/report. Arihant especially states that it has no financial liability, whatsoever, to the users of this report.

Arihant Capital Markets Ltd

#1011 Solitaire Corporate Park Building No.10 1st Floor
Andheri Ghatkopar Link Road Chakala Andheri (E) Mumbai-400093
T. 022-42254800. Fax: 022-42254880
www.arihantcapital.com