

To join our research group on TELEGRAM, please click on the links - <https://bit.ly/2Rt4NyS> and <https://bit.ly/3ciqvDn>

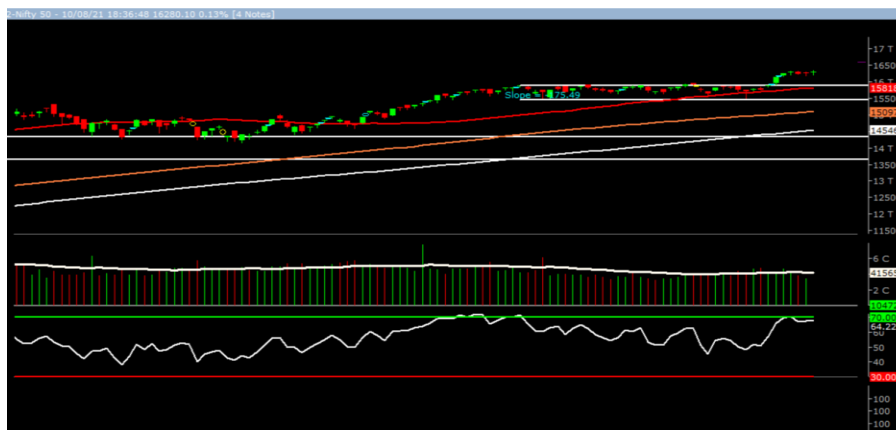
Wednesday, 11th Aug, 2021

Indian Indices	Last Price	(%) Chg
NSE	16280.10	0.13
BSE	54554.66	0.28
World Indices	Last Price	(%) Chg
Dow Jones	35264.67	0.46
Nasdaq	14788.09	-0.49
Nikkei	28069.28	0.65
Hang Seng	26741.01	0.51
FTSE	7161.04	0.40
Commodity	Last Price	(%) Chg
GOLD(\$/ounce)	1733.20	0.09
Silver (\$/Ounce)	23.31	-0.35
Crude (\$/BBL)	70.51	-0.17
Aluminium spot (\$/mt)	2592.20	0.30
Copper SPOT (\$/mt)	9494.50	-0.15
Lead Spot (\$/MT)	2290.50	-0.29
Natural gas \$/MMBtu	4.11	0.49
Currency	Last Price	(%) Chg
USD-INR	74.51	0.12
EUR-INR	87.43	-0.18
Bond		
India 10 Yr Bond yield	6.23	0.19

52 Wk High (A group)			52 Wk Low (A group)		
Company	Close Price	52 Wk High	Company	Close Price	52 Wk Low
AIRTEL	621	627	--	--	--
CUMMINS	944	950	--	--	--
INFOSYS	1678	1680	--	--	--
JUBLIFOOD	3750	3842	--	--	--
MPHASIS	2710	2758	--	--	--

Source: BSE

Market Technical Outlook



Nifty opened higher, traded in a narrow range with choppiness but finally managed to close in green. On the daily chart we are observing four consecutive narrow range body formations which suggest indecisiveness prevailing at current level. Hence, a consolidation or minor pullback of previous rise cannot be ruled out. In coming trading session if Nifty for first hour trades above 16340 then it may test 16390 - 16450 levels. On the downside, 16170 - 16050 levels may act as support for the day. **We still continue to maintain our stance that stock specific activity is likely to continue in small and Mid-cap stocks.**

Foreign Institutional Investments (FIIs) Activities

Name of Segment	Net Buyer/seller	Rs In Cr
Index Futures	Net Sell	-287.81
Stock Futures	Net Buy	469.89
Net Future Position	Net Buy	182.08
Index Options	Net Sell	-783.96
Stock Options	Net Sell	-60.05
Net Options Position	Net Sell	-844.01
FII In cash Segment	Net Sell	-178.51
DII In cash Segment	Net Buy	689.00
Net Cash Position	Net Buy	510.49

Guru Call: From the expert's desk

Company	Reco Date	Reco Price (Buy on dips)	High till date	Return%
Aarti drugs	21-Aug-20	783.00	1026.95	31.16%
Accelya Solutions India Ltd	10-Jun-21	1203.90	1539.40	27.87%
Aditya Birla Fashion and Retail Ltd	08-Feb-21	164.40	231.65	40.91%
Aegis Logistics	11-Sep-20	204.05	387.90	90.10%
Ajanta Pharma	04-Aug-20	1661.05	2197.90	32.32%
Alkem	08-Jul-20	2427.00	3558.90	46.64%
Ambuja Cements Ltd	07-Jun-21	339.05	408.09	20.36%
Asian Paints Ltd.	30-Mar-17	1068.10	3179.50	197.68%
Astec LifeSciences Limited	09-Jul-21	1360.70	1487.00	9.28%
Avenue Supermarts Ltd.	31-Jul-17	898.55	3448.95	283.84%
Axis Bank Ltd.	10-Apr-18	519.30	827.75	59.40%
Bajaj Consumer Care Ltd	03-Feb-21	255.80	324.00	26.66%
Bajaj Finance Ltd.	11-Oct-18	2271.00	6342.80	179.30%
Bajaj Finserv Ltd	1-Nov-16	3416.80	13110.00	283.69%
Bajaj Holdings And Investment Ltd	19-May-16	1499.10	4060.00	170.83%
Bajaj-Auto	12-Jun-20	2782.00	4361.40	56.77%
Bandhan Bank Ltd.	19-Dec-18	556.40	650.00	16.82%
Berger Paints India Ltd	07-Dec-20	672.20	872.95	29.86%
Bharti Airtel Limited	03-Dec-20	479.90	623.00	29.82%
Birla Corporation Limited	28-Jun-21	1240.00	1450.80	17.00%
Britannia	12-June-20	3366.00	4010.00	19.13%
Cadila	03-Apr-20	274.00	673.70	145.88%
CAMS	08-Oct-20	1334.90	3740.65	180.22%
CDSL	17-Sep-20	485.90	1579.00	224.96%
Ceat Limited	28-Jan-21	1541.05	1763.00	14.40%
Century Textile and Industries Ltd	25-Nov-16	750.40	1471.20	96.06%
CESC Ltd	08-Jun-21	758.20	870.90	14.86%
CG Power and Industrial Solutions Ltd	10-Feb-21	45.25	91.95	103.20%
Chola finance	25-Sep-20	238.70	600.95	151.76%
Chola Holding	23-Sep-20	391.80	711.00	81.47%
Cipla Ltd	20-Mar-17	597.30	997.00	66.92%
Colgate Palmolive	16-Sep-19	1314.00	1794.85	36.59%
Crompton Greaves Consumer	11-Jun-20	225.00	496.70	120.76%
Dabur India	22-Oct-19	466.00	605.00	29.83%
DFM Foods Ltd	03-Feb-21	409.05	453.80	10.94%
Divislab	04-Aug-20	2641.00	4848.00	83.57%
DLF Ltd	10-Apr-19	194.30	338.80	74.37%
Dr Reddy	04-Aug-20	4530.00	5614.60	23.94%
Emami Limited	26-Jun-19	290.35	578.50	99.24%
Finolex Cables Ltd	08-Feb-21	368.80	557.70	51.22%
Finolex Industries Ltd	01-Jul-21	184.25	187.35	1.68%
Fortis	14-Jul-20	127.00	253.90	99.92%
Galaxy Surface	01-Jul-20	1557.00	3294.70	111.61%
Gillette India Limited	11-Jun-21	5847.00	6249.00	6.88%
Glaxosmithkline Pharmaceuticals Ltd	27-Aug-20	1455.75	1807.50	24.16%
Godrej Consumer Products Limited	16-Jun-20	634.00	980.70	54.68%
Godrej Industries Ltd.	12-Feb-18	550.70	657.60	19.41%
Godrej Properties Ltd	04-Dec-20	1200.30	1596.80	33.03%
Greaves Cotton Ltd	14-Jul-21	176.65	182.00	3.03%
HDFC Asset Management Company Ltd.	19-Dec-18	1572.90	3844.00	144.39%
HDFC Bank Limited	10-Nov-16	639.00	1641.00	156.81%
HDFC Life Insurance Co Ltd	19-Jan-18	485.05	746.00	53.80%

Guru Call: From the expert's desk

Company	Reco Date	Reco Price (Buy on dips)	High till date	Return%
Hero Motocorp Ltd	29-Sep-20	3174.95	3629.05	14.30%
Hindustan Unilever Ltd.	13-Nov-17	1290.70	2614.30	102.55%
Housing Development Finance Corp Ltd	19-Dec-17	1720.00	2896.00	68.37%
ICICI Bank Ltd.	06-Apr-18	278.65	679.40	143.82%
ICICI Lombard General Insurance	19-Sep-19	1154.90	1626.45	40.83%
ICICI Prudential Life Insurance Company Ltd.	28-Jun-18	375.80	660.20	75.68%
ICICI Securities Ltd	24-Sep-20	466.65	802.00	71.86%
Indusindbnk	08-Jun-20	451.00	1119.50	148.23%
Infosys Ltd.	17-Aug-17	487.60	1596.85	227.49%
Ion Exchange (India) Ltd	01-June-21	1464.95	2947.00	101.17%
Ipca Lab	11-Aug-20	2099.00	2460.00	17.20%
JK Cement	19-Jun-20	1378.00	3289.00	138.68%
JK Lakshmi Cement	03-Jul-20	276.00	721.25	161.32%
Jubilant Ingrevia Ltd	22-Jul-21	623.00	640.00	2.73%
Justdial	07-Oct-20	385.60	1138.00	195.12%
Jyoti lab	05-Aug-20	132.90	187.30	40.93%
Kansai Nerolac Paints	16-Dec-19	529.85	680.00	28.34%
Kotak Mahindra Bank Ltd	10-Nov-16	822.10	2049.00	149.24%
L&T Finance Holdings Ltd	03-Dec-20	84.05	113.40	34.92%
LIC Housing Finance Limited	06-Jan-21	408.30	542.45	32.86%
Mahanagar Gas	15-Nov-19	1029.00	1284.40	24.82%
Mahindra & Mahindra Fin. Services Ltd.	08-Dec-20	175.25	224.30	27.99%
Mahindra & Mahindra Ltd.	05-Jun-17	709.25	993.00	40.01%
Manappuram Finance Ltd.	24-Apr-18	119.20	194.80	63.42%
Marico Ltd.	04-Apr-18	325.00	549.60	69.11%
Maruti Suzuki India Ltd	13-Aug-20	5988.85	8329.00	39.08%
Nam-India	25-Nov-18	377.00	452.90	20.13%
Nestle India Ltd.	27-Sep-18	9729.40	18844.00	93.68%
NRB Bearings Limited	18-Jun-21	134.30	154.40	14.97%
Oberoi Realty Ltd.	23-Nov-17	508.60	729.00	43.33%
PEL	02-Sep-20	1246.25	2520.90	102.28%
Pfizer	22-Jul-20	4150.00	5900.00	42.17%
Phoenix Mills Limited	07-Jul-19	655.15	979.00	49.43%
Pidilite Industries Limited	04-Oct-16	681.60	2333.95	242.42%
Polycab India Ltd	06-Jan-21	1176.10	2033.00	72.86%
Raymond	25-Sep-20	263.55	473.90	79.81%
RBL Bank	25-Sep-20	164.95	274.30	66.29%
Reliance	22-Apr-20	1351.00	2369.35	75.38%
Rites Ltd.	19-Dec-18	226.96	331.00	45.84%
SBI Card	16-Jul-20	719.00	1139.50	58.48%
SBI Life	20-May-20	715.00	1064.95	48.94%
State Bank of India	03-Feb-21	335.95	441.95	31.55%
Sun Pharma	07-Aug-20	525.00	721.85	37.50%
Suprajit Engineering Ltd.	08-Feb-21	244.30	324.90	32.99%
Syngene	24-Sep-20	565.70	700.00	23.74%
Tata Chemicals Limited	24-Dec-19	296.89	833.95	180.90%
Tata Coffee Ltd.	28-Jun-21	183.35	198.65	8.34%
Tata Consultancy Services Ltd.	08-Jan-18	1344.60	3399.65	152.84%
Tata Consumer	29-Jun-17	149.15	786.85	427.56%
Trent Ltd.	19-Dec-18	348.40	947.95	172.09%
Ultratech Cement Ltd.	19-Dec-18	4084.60	7544.00	84.69%
VEDL	28-Jun-21	260.80	276.15	5.89%
Voltas Ltd.	27-Mar-18	613.90	1132.00	84.39%
Whirlpool Of India Ltd.	07-Dec-16	872.25	2787.00	219.52%
Shilpa Medicare Ltd	20-Jul-21	661.75	668.90	1.08%

Guru Call: From the expert's desk

Company	Reco Date	Reco Price (Buy on dips)	High till date	Return%
Zee Entertainment	22-Nov-19	345.00	362.00	4.93%

NIFTY 50 STOCKS BELOW 200SMA

SCRIP NAME	SMA 200	CLOSING (10-08-2021)
DRREDDY	4985.19	4769.75
HEROMOTOCO	3055.27	2797.05
MARUTI	7214.5	7001.95
HDFCLIFE	675.08	670.3
--	--	--
--	--	--
--	--	--
--	--	--
--	--	--
--	--	--
--	--	--
--	--	--
--	--	--

Weekly Expiry Most Active Nifty Call Option

Symbol	Expiry Date	Strike Price	Highest Open Interest (Contracts)
NIFTY	12-Aug-2021	16300	1,04,596
NIFTY	12-Aug-2021	16400	97,538
NIFTY	12-Aug-2021	16500	91,535

Weekly Expiry Most Active Nifty Put Option

Symbol	Expiry Date	Strike Price	Highest Open Interest (Contracts)
NIFTY	12-Aug-2021	16200	1,01,175
NIFTY	12-Aug-2021	16000	83,289
NIFTY	12-Aug-2021	15700	71,084

Securities in Ban For Trade Date 11-08-2021

CANBK, IBULHSGFIN, NATIONALUM, PNB, RBLBANK, SAIL, SUNTV

Bulk Deals (NSE)

Deal Date	Scrip Name	Client Name	Deal Type	Quantity	Price
10-Aug-21	ASTRON	GOVIND MAHESHWARI	BUY	2375000	53.50
10-Aug-21	ASTRON	VISHNU JAJOO HUF	BUY	2000000	53.50
10-Aug-21	ASTRON	DWARKESH FINANCE LIMITED	BUY	4400000	53.50
10-Aug-21	ASTRON	ASIAN GRANITO INDIA LIMITED	SELL	8775000	53.50

Bulk Deals (BSE)

Deal Date	Scrip Name	Client Name	Deal Type	Quantity	Price
10-Aug-21	BHARATWIRE	BAKULESH TRAMBAKLAL SHAH	S	1000000	83.50
10-Aug-21	BHARATWIRE	RASHI FINCORP LIMITED	B	1000000	83.50
10-Aug-21	DYNAMATECH	MADHURI MADHUSUDAN KELA	B	44700	1,618.88
10-Aug-21	DYNAMATECH	ABAKKUS EMERGING OPPORTUNITIES FUND - 1	B	125000	1,617.00
10-Aug-21	DYNAMATECH	UDAYANT MALHOUTRA	S	96719	1,616.38
10-Aug-21	DYNAMATECH	WAVELL INVESTMENT PVT LTD	S	153,281	1,619.54

Note- Executed on 10th Aug 2021. Bulk Deal Buy/Sell done by fund house is considered

Research Analyst Registration No.

INH000002764

Contact

SMS: 'Arihant' to 56677

Website
www.arihantcapital.com
mail Id
arihant.research@arihantcapital.com

Arihant is Forbes Asia's '200 Best under a \$Billion' Company
'Best Emerging Commodities Broker' awarded by UTV Bloomberg

Disclaimer: This document has been prepared by Arihant Capital Markets Limited (hereinafter called as Arihant) and its subsidiaries and associated companies. This document does not constitute an offer or solicitation for the purchase and sale of any financial instrument by Arihant. Receipt and review of this document constitutes your agreement not to circulate, redistribute, retransmit or disclose to others the contents, opinions, conclusion, or information contained herein. This document has been prepared and issued on the basis of publicly available information, internally developed data and other sources believed to be reliable. Whilst meticulous care has been taken to ensure that the facts stated are accurate and opinions given are fair and reasonable, neither the analyst nor any employee of our company is in any way is responsible for its contents and nor is its accuracy or completeness guaranteed. This document is prepared for assistance only and is not intended to be and must not alone be taken as the basis for an investment decision. All recipients of this material should before dealing and or transacting in any of the products referred to in this material make their own investigation, seek appropriate professional advice. The investments discussed in this material may not be suitable for all investors. The recipient alone shall be fully responsible/are liable for any decision taken on the basis of this material. Arihant Capital Markets Ltd (including its affiliates) or its officers, directors, personnel and employees, including persons involved in the preparation or issuance of this material may; (a) from time to time, have positions in, and buy or sell or (b) be engaged in any other transaction and earn brokerage or other compensation in the financial instruments/products discussed herein or act as advisor or lender/borrower in respect of such securities/financial instruments/products or have other potential conflict of interest with respect to any recommendation and related information and opinions. The said persons may have acted upon and/or in a manner contradictory with the information contained here and may have a position or be otherwise interested in the investment referred to in this document before its publication. The user of this report assumes the entire risk of any use made of this data/report. Arihant especially states that it has no financial liability, whatsoever, to the users of this report.

Arihant Capital Markets Ltd

#1011 Solitaire Corporate Park Building No.10 1st Floor
 Andheri Ghatkopar Link Road Chakala Andheri (E) Mumbai-400093
 T. 022-42254800. Fax: 022-42254880
www.arihantcapital.com