

To join our research group on TELEGRAM, please click on the links - <https://bit.ly/37T17JR> and <https://bit.ly/2svtU7k>

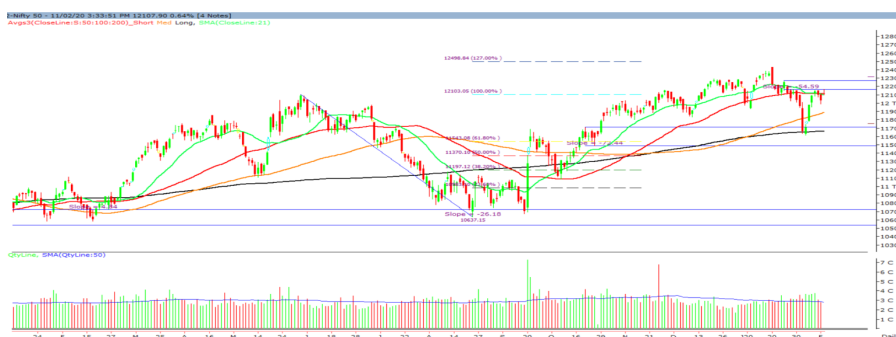
Wednesday, 12th February, 2020

Indian Indices	Last Price	(%) Chg
BSE	41216.14	0.58
NSE	12107.90	0.63
World Indices		
Dow Jones	29276.34	-0.00
Nasdaq	9638.94	0.11
Nikkei	23814.98	0.54
Hang Seng	27768.71	0.66
FTSE	7499.44	0.71
Commodity	Last Price	(%) Chg
GOLD(\$/ounce)	1570.60	0.03
Silver (\$/Ounce)	17.59	-0.04
Crude (\$/BBL)	54.81	1.48
Aluminium spot (\$/mt)	1734.75	-0.20
Copper SPOT (\$/mt)	5753.75	0.50
Lead Spot (\$/MT)	1848.25	0.09
Natural gas \$/MMBtu	1.80	0.45
Currency	Last Price	(%) Chg
USD-INR	71.36	-0.07
EUR-INR	78.01	-0.31
Bond		
India 10 Yr Bond yield	6.46	0.42

52 Wk High (A group)			52 Wk Low (A group)		
Company	Close Price	52 Wk High	Company	Close Price	52 Wk Low
ADANI	245	248	GHCL	176	175
ABFRL	272	275	--	--	--
AJANTAP	1354	1424	--	--	--
ALEMBI	650	666	--	--	--
BAJFINA	4749	4785	--	--	--

Source: BSE

Market Technical Outlook



Nifty opened up with a gap and traded with positive bias throughout the day to close in green. On the daily chart, we are observing a Doji candlestick pattern which has closed below the 50-day SMA. This suggests indecisiveness prevailing at current level. We still maintain our stance that 12112 remains crucial resistance. Any close above 12112 would propel Nifty to test 12180 – 12250 levels in couple of days. On the downside, 11950 -11900 levels may act as support for the day. **We maintain our stance that one needs to adopt cautious approach at current levels and wait for more confirmation of trend reversal. However, Stock activity is likely to continue.**

News for stocks

SBI	The Securities and Exchange Board of India (SEBI) has given its in-principle approval for the initial public offering (IPO) of SBI Cards and Payment Services, a subsidiary of the country's largest lender State Bank of India
SPARC	Sun Pharma Advanced Research received a complete response letter from U.S. FDA for the new drug application for Taclantis

Foreign Institutional Investments (FII's) Activities

Name of Segment	Net Buyer/seller	Rs In Cr
Index Futures	Net Buy	1403.79
Stock Futures	Net Buy	578.91
Net Future Position	Net Buy	1982.70
Index Options	Net Buy	901.64
Stock Options	Net Buy	43.76
Net Options Position	Net Buy	945.40
FII In cash Segment	Net Sell	-209.39
DII In cash Segment	Net Buy	344.63
Net Cash Position	Net Buy	135.24

Technical Levels for Nifty 50 Companies

Company	Closing 11-02-2020	Buy/Sell Trigger	Resistance 1	Resistance 2	Support 1	Support 2
ADANI PORTS	374.2	373.88	378.72	383.23	369.37	364.53
ASIAN PAINT	1878.1	1881.78	1890.82	1903.53	1869.07	1860.03
AXIS BANK	749.95	749.68	757.37	764.78	742.27	734.58
BAJAJ-AUTO	3145.45	3131.82	3163.63	3181.82	3113.63	3081.82
BAJAJ FINSV	9731.6	9728.37	9813.23	9894.87	9646.73	9561.87
BAJ FINANCE	4749.35	4756.78	4777.57	4805.78	4728.57	4707.78
BHARTIARTL	534.3	537.23	541.72	549.13	529.82	525.33
BPCL	481	485	489.95	498.9	476.05	471.1
BRITANNIA	3134.7	3152.57	3180.93	3227.17	3106.33	3077.97
CIPLA	450.6	448.65	453.95	457.3	445.3	440
COALINDIA	179.35	179.03	181.82	184.28	176.57	173.78
DRREDDY	3191.2	3177.38	3219.77	3248.33	3148.82	3106.43
EICHER MOT	19009.25	19107.73	19270.46	19531.68	18846.52	18683.78
GAIL	129.15	127.4	131.6	134.05	124.95	120.75
GRASIM	759.3	760.8	767.5	775.7	752.6	745.9
HCLTECH	610.65	610.03	614.37	618.08	606.32	601.98
HDFC	2435.15	2432.37	2444.53	2453.92	2422.98	2410.82
HDFC BANK	1240.6	1244.55	1251.05	1261.5	1234.1	1227.6
HEROMOTOCO	2396.45	2409.93	2429.87	2463.28	2376.52	2356.58
HINDALCO	193.65	194.2	196.4	199.15	191.45	189.25
HINDUNILVR	2152.65	2160	2172.3	2191.95	2140.35	2128.05
ICICIBANK	539.75	540.68	543.87	547.98	536.57	533.38
INDUSINDBK	1292.65	1295.87	1306.68	1320.72	1281.83	1271.02
INFRA TEL	248.8	246.33	251.47	254.13	243.67	238.53
INFY	773.55	773.95	778.7	783.85	768.8	764.05
IOC	116.05	116.38	117.07	118.08	115.37	114.68
ITC	212.6	213.78	215.77	218.93	210.62	208.63
JSWSTEEL	288.75	286.95	295.3	301.85	280.4	272.05
KOTAK BANK	1677.45	1676.6	1686.65	1695.85	1667.4	1657.35
LT	1286.9	1289.95	1295.9	1304.9	1280.95	1275
M&M	524.05	528.15	533.6	543.15	518.6	513.15
MARUTI	7033.75	7011.68	7111.07	7188.38	6934.37	6834.98
NESTLE IND	15997.15	16082.4	16214.8	16432.45	15864.75	15732.35
NTPC	116.85	116.17	118.23	119.62	114.78	112.72
ONGC	106.8	106.92	107.53	108.27	106.18	105.57
POWERGRID	189.5	189.6	191.1	192.7	188	186.5
RELIANCE	1452.75	1454.67	1464.28	1475.82	1443.13	1433.52
SBIN	324.35	323.73	326.42	328.48	321.67	318.98
SUN PHARMA	418.55	420.02	423.23	427.92	415.33	412.12
TATAMOTORS	169.75	171.1	173.8	177.85	167.05	164.35
TATA STEEL	444.1	448.17	453.63	463.17	438.63	433.17
TCS	2153.4	2158.6	2169.6	2185.8	2142.4	2131.4
TECHM	819.95	817.62	824.18	828.42	813.38	806.82
TITAN	1270.7	1269.38	1280.22	1289.73	1259.87	1249.03
ULTRACEMCO	4466.45	4472.98	4512.97	4559.48	4426.47	4386.48
UPL	576.65	577.12	584.33	592.02	569.43	562.22
VEDL	140.75	141.52	142.83	144.92	139.43	138.12
WIPRO	241.25	241.32	242.83	244.42	239.73	238.22
YES BANK	36.85	37.22	37.73	38.62	36.33	35.82
ZEEL	231.3	232.17	236.58	241.87	226.88	222.47

(Source – IRIS)

Guru Call: From the expert's desk

Company	Reco Date	Reco Price (Buy on dips)	High till date	Return%
Aditiya Birla Capital	22-Nov-19	95.75	115.35	20.47%
Asian Paints Ltd.	30-Mar-17	1068.1	1862.25	74.35%
Avenue Supermarts Ltd.	31-Jul-17	898.55	2010	123.69%
Axis Bank Ltd.	10-Apr-18	519.3	827.75	59.40%
Bajaj Finance Ltd.	11-Oct-18	2271	4295.75	89.16%
Bajaj Finserv Ltd	1-Nov-16	3416.8	9764.35	185.77%
Bajaj Holdings And Investment Ltd	19-May-16	1499.1	3903.95	160.42%
Bandhan Bank Ltd.	19-Dec-18	556.4	650	16.82%
Bharat Petroleum Corporation Ltd.	23-Oct-19	531.5	549	3.29%
Century Textile and Industries Ltd	25-Nov-16	326	634	94.48%
Cipla Ltd	20-Mar-17	597.3	678.45	13.59%
Colgate Palmolive	16-Sep-19	1314	1642.6	25.01%
Container Corporation	22-Nov-19	577	603	4.51%
Dabur India	22-Oct-19	466	501	7.51%
DLF Ltd	10-Apr-19	194.3	265.9	36.85%
Emami Limited	26-Jun-19	290.35	357.7	23.20%
Godrej Industries Ltd.	12-Feb-18	550.7	657.6	19.41%
Godrej Properties Ltd.	19-Dec-18	685.3	1119.6	63.37%
Grasim Industries Ltd.	31-May-17	1132.5	1331	17.53%
Havells India Ltd.	8-Dec-17	525.75	806.85	53.47%
Housing Development Finance Corp Ltd	19-Dec-17	1720	2499.9	45.34%
HDFC Asset Management Company Ltd.	19-Dec-18	1572.9	3844	144.39%
HDFC Bank Limited	10-Nov-16	639	1305.5	104.30%
HDFC Life Insurance Co Ltd	19-Jan-18	485.05	646.4	33.26%
Hindustan Unilever Ltd.	13-Nov-17	1290.7	2190	69.68%
ICICI Bank Ltd.	6-Apr-18	278.65	552.2	98.17%
ICICI Prudential Life Insurance Company Ltd.	28-Jun-18	375.8	537.3	42.97%
ICICI Lombard General Insurance	19-Sep-19	1154.9	1440.4	24.72%
Infosys Ltd.	17-Aug-17	487.6	847	73.71%
Kansai Nerolac Paints	16-Dec-19	529.85	551	3.99%
Kotak Mahindra Bank Ltd	10-Nov-16	822.1	1734.8	111.02%
Mahindra & Mahindra Ltd.	5-Jun-17	709.25	993	40.01%
Manappuram Finance Ltd.	24-Apr-18	119.2	189	58.56%
Mahanagar Gas	15-Nov-19	1029	1198	16.42%
Marico Ltd.	4-Apr-18	325	404	24.31%
Nestle India Ltd.	27-Sep-18	9729.4	15850	62.91%
Oberoi Realty Ltd.	23-Nov-17	508.6	641.7	26.17%
Phoenix Mills Limited	7-Jul-19	655.15	900	37.37%
Pidilite Industries Limited	4-Oct-16	681.6	1493.5	119.12%
Prestige Estates Projects Limited	6-Jun-19	286.7	426	48.59%
Reliance Nippon	25-Nov-18	377	386.4	2.49%
Rites Ltd.	19-Dec-18	226.96	324.8	43.11%
RBL Bank	22-Nov-19	334	391.2	17.13%
State Bank Of India	28-Aug-18	308	373.8	21.36%
Shipping Corporation	22-Nov-19	64	65.95	3.05%
Tata Chemicals Limited	24-Dec-19	682.8	762	11.60%
Tata Global Beverages Ltd.	29-Jun-17	149.15	399.45	167.82%
Tata Consultancy Services Ltd.	8-Jan-18	1344.6	2296.2	70.77%
Trent Ltd.	19-Dec-18	348.4	611.95	75.65%
Ultratech Cement Ltd.	19-Dec-18	4084.6	4904.95	20.08%
Voltas Ltd.	27-Mar-18	613.9	730.95	19.07%
Whirlpool Of India Ltd.	7-Dec-16	872.25	2510	187.76%
Zee Entertainment	22-Nov-19	345	362	4.93%

NIFTY 50 STOCKS BELOW 200SMA

SCRIP NAME	SMA 200	CLOSING (11-02-2020)
WIPRO	259.96	241.25
ZEEL	316.08	231.3
LT	1394.14	1286.9
ITC	257.65	212.6
GRASIM	796.26	759.3
CIPLA	494.47	450.6
M&M	577.51	524.05
HINDALCO	196.28	193.65
HEROMOTOCO	2550.89	2396.45
SUNPHARMA	422.34	418.55
IOC	137.83	116.05
ONGC	140.05	106.8
VEDL	153.67	140.75
UPL	594.24	576.65
GAIL	137.3	129.15
EICHERMOT	19618.63	19009.25
INDUSINDBK	1427.36	1292.65
ADANIPTS	386.76	374.2
POWERGRID	196.35	189.5
TCS	2154.44	2153.4
NTPC	123.02	116.85
YESBANK	80.95	36.85
COALINDIA	213.57	179.35
INFRADEL	253.27	248.8

Bulk Deals (BSE)

Deal Date	Scrip Name	Client Name	Deal Type	Quantity	Price
11-Feb-20	CIFL	DHARAMPAL SATYAPAL LIMITED	B	1300000	140.00
11-Feb-20	CIFL	DS CHEWING PRODUCTS LLP	S	1300000	140.00
11-Feb-20	PARAGMILK	RELIGARE INVESCO ASSET MANAGEMENT COMPANY PRIVATE LIMITED	S	1264068	101.00

Bulk Deals (NSE)

Deal Date	Scrip Name	Client Name	Deal Type	Quantity	Price
11-Feb-20	Sobha Limited	INVESCO ASIAN EQUITY FUND	BUY	512090	398.05
11-Feb-20	Trident Limited	TRIDENT GROUP LIMITED	BUY	45000000	5.95
11-Feb-20	Greenpanel Industries Ltd	HDFC MUTUAL FUND	SELL	1101000	55.01
11-Feb-20	Justdial Ltd.	NEW YORK STATE COMMON RETIREMENT FUND	SELL	354938	506.84
11-Feb-20	Sobha Limited	INVESCO SMALLER COMPANIES AND MARKETS INVESTMENT	SELL	493751	398.25
11-Feb-20	Tejas Networks Limited	RUSSELL INVESTMENT COMPANY EMERGING MARKETS FUND	SELL	500828	77.17
11-Feb-20	Trident Limited	MADHURAJ FOUNDATION	SELL	45000000	5.95

Note- Executed on 11th Feb 2020. Bulk Deal Buy/Sell done by fund house is considered.

Weekly Expiry Most Active Nifty Call Option

Symbol	Expiry Date	Strike Price	Highest Open Interest (OI)
NIFTY	13-Feb-20	12200	2663250
NIFTY	13-Feb-20	12300	2369325
NIFTY	13-Feb-20	12100	2021250

Weekly Expiry Most Active Nifty Put Option

Symbol	Expiry Date	Strike Price	Highest Open Interest (OI)
NIFTY	13-Feb-20	12000	2547975
NIFTY	13-Feb-20	12100	2148225
NIFTY	13-Feb-20	11900	1669425

Securities in Ban For Trade Date 12-02-2020

YESBANK

Research Analyst Registration No.

INH000002764

Contact

SMS: 'Arihant' to 56677

Website
www.arihantcapital.com
mail Id
arihant.research@arihantcapital.com

**Arihant is Forbes Asia's '200 Best under a \$Billion' Company
 'Best Emerging Commodities Broker' awarded by UTV Bloomberg**

Disclaimer: This document has been prepared by Arihant Capital Markets Limited (hereinafter called as Arihant) and its subsidiaries and associated companies. This document does not constitute an offer or solicitation for the purchase and sale of any financial instrument by Arihant. Receipt and review of this document constitutes your agreement not to circulate, redistribute, retransmit or disclose to others the contents, opinions, conclusion, or information contained herein. This document has been prepared and issued on the basis of publicly available information, internally developed data and other sources believed to be reliable. Whilst meticulous care has been taken to ensure that the facts stated are accurate and opinions given are fair and reasonable, neither the analyst nor any employee of our company is in any way is responsible for its contents and nor is its accuracy or completeness guaranteed. This document is prepared for assistance only and is not intended to be and must not alone be taken as the basis for an investment decision. All recipients of this material should before dealing and or transacting in any of the products referred to in this material make their own investigation, seek appropriate professional advice. The investments discussed in this material may not be suitable for all investors. The recipient alone shall be fully responsible/are liable for any decision taken on the basis of this material. Arihant Capital Markets Ltd (including its affiliates) or its officers, directors, personnel and employees, including persons involved in the preparation or issuance of this material may; (a) from time to time, have positions in, and buy or sell or (b) be engaged in any other transaction and earn brokerage or other compensation in the financial instruments/products discussed herein or act as advisor or lender/borrower in respect of such securities/financial instruments/products or have other potential conflict of interest with respect to any recommendation and related information and opinions. The said persons may have acted upon and/or in a manner contradictory with the information contained here and may have a position or be otherwise interested in the investment referred to in this document before its publication. The user of this report assumes the entire risk of any use made of this data/report. Arihant especially states that it has no financial liability, whatsoever, to the users of this report.

Arihant Capital Markets Ltd

#1011 Solitaire Corporate Park Building No.10 1st Floor
 Andheri Ghatkopar Link Road Chakala Andheri (E) Mumbai-400093
 T. 022-42254800. Fax: 022-42254880
www.arihantcapital.com