

To join our research group on TELEGRAM, please click on the links - <https://bit.ly/37T17JR> and <https://bit.ly/2svtU7k>

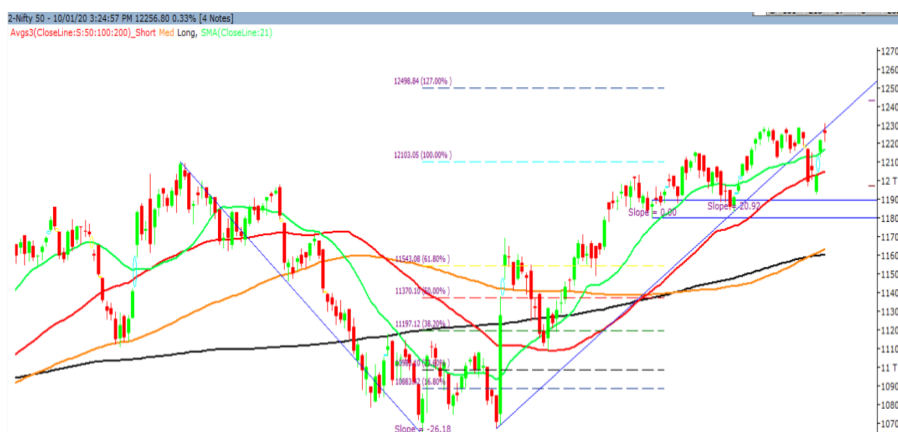
Monday, 13th January, 2020

Indian Indices	Last Price	(%) Chg
BSE	41599.72	0.36
NSE	12256.80	0.33
World Indices		
Dow Jones	28823.77	-0.46
Nasdaq	9178.86	-0.27
Nikkei	--	--
Hang Seng	28844.95	0.72
FTSE	7587.85	-0.14
Commodity	Last Price	(%) Chg
GOLD(\$/ounce)	1557.20	-0.19
Silver (\$/Ounce)	18.05	-0.30
Crude (\$/BBL)	65.00	0.03
Aluminium spot (\$/mt)	1802.00	-0.48
Copper SPOT (\$/mt)	6213.25	0.14
Lead Spot (\$/MT)	1926.75	-0.05
Natural gas \$/MMBtu	2.18	-0.91
Currency	Last Price	(%) Chg
USD-INR	71.06	-0.39
EUR-INR	78.94	-0.51
Bond	Last Price	(%) Chg
India 10 Yr Bond yield	6.58	0.98

52 Wk High (A group)			52 Wk Low (A group)		
Company	Close Price	52 Wk High	Company	Close Price	52 Wk Low
ALKEM	2269	2298	--	--	--
BALKRISH	1040	1053	--	--	--
DLF	244	245	--	--	--
HDFC	2458	2477	--	--	--
GRANUL	128	136	--	--	--

Source: BSE

Market Technical Outlook



Nifty opened up with a gap and traded in a narrow range with choppiness but finally managed to close in green. On the daily chart we are observing high wave "Doji" candlestick pattern which implies indecisiveness prevailing. At present looking at the current price action we are of the opinion that 12140 levels remains strong support.

In coming trading session if Nifty opens in the range of 12218 – 12180 then go long, with a stop loss of 12140 for a target of 12279 – 12310 – 12360 levels.

News for stocks

Mutual Funds/AMCs	Over 85% Indian mutual fund investors come from top 30 cities. In 2019, industry saw a massive adoption trend by investors across cities, towns and villages with a substantial share of investors coming from the younger population.
Auto Sector	In middle of a prolonged slowdown, the automobile industry has asked the government to take bold fiscal measures such as reduction in GST rates on vehicles and abolition of duty on import of lithium-ion battery cells, to encourage electric mobility

Foreign Institutional Investments (FII's) Activities

Name of Segment	Net Buyer/seller	Rs In Cr
Index Futures	Net Buy	308.28
Stock Futures	Net Sell	-405.29
Net Future Position	Net Sell	-97.01
Index Options	Net Buy	667.32
Stock Options	Net Sell	-46.31
Net Options Position	Net Buy	621.01
FII In cash Segment	Net Buy	578.28
DII In cash Segment	Net Sell	-251.74
Net Cash Position	Net Buy	326.54

Technical Levels for Nifty 50 Companies

Company	Closing 10-01-2020	Buy/Sell Trigger	Resistance 1	Resistance 2	Support 1	Support 2
ADANI PORTS	392.05	392.12	394.23	396.42	389.93	387.82
ASIAN PAINT	1792.55	1783.28	1806.57	1820.58	1769.27	1745.98
AXIS BANK	740.05	742.22	749.63	759.22	732.63	725.22
BAJAJ-AUTO	3101.20	3101.32	3116.88	3132.57	3085.63	3070.07
BAJAJ FINSV	9372.25	9381.80	9425.30	9478.35	9328.75	9285.25
BAJ FINANCE	4144.85	4149.58	4181.17	4217.48	4113.27	4081.68
BHARTIARTL	457.00	459.05	463.90	470.80	452.15	447.30
BPCL	470.25	470.45	474.50	478.75	466.20	462.15
BRITANNIA	2989.75	2994.27	3010.48	3031.22	2973.53	2957.32
CIPLA	473.50	473.42	477.08	480.67	469.83	466.17
COALINDIA	205.30	203.60	208.25	211.20	200.65	196.00
DRREDDY	2933.00	2955.38	2985.62	3038.23	2902.77	2872.53
EICHERMOT	20432.75	20474.32	20698.43	20964.12	20208.63	19984.52
GAIL	125.35	125.78	127.32	129.28	123.82	122.28
GRASIM	756.25	757.92	764.83	773.42	749.33	742.42
HCLTECH	580.35	582.52	587.63	594.92	575.23	570.12
HDFC	2457.55	2458.50	2476.70	2495.85	2439.35	2421.15
HDFC BANK	1282.70	1281.57	1288.03	1293.37	1276.23	1269.77
HEROMOTOCO	2363.45	2367.38	2383.77	2404.08	2347.07	2330.68
HINDALCO	211.50	211.97	213.73	215.97	209.73	207.97
HINDUNILVR	1954.00	1947.72	1963.78	1973.57	1937.93	1921.87
ICICIBANK	540.25	541.75	545.00	549.75	537.00	533.75
INDUSINDBK	1491.25	1499.03	1513.87	1536.48	1476.42	1461.58
INFRA TEL	249.45	251.68	254.67	259.88	246.47	243.48
INFY	738.15	737.18	743.87	749.58	731.47	724.78
IOC	125.45	125.08	126.12	126.78	124.42	123.38
ITC	238.00	237.85	238.90	239.80	236.95	235.90
JSWSTEEL	277.90	277.63	280.27	282.63	275.27	272.63
KOTAK BANK	1684.70	1682.63	1694.07	1703.43	1673.27	1661.83
LT	1324.60	1326.52	1334.03	1343.47	1317.08	1309.57
M&M	546.60	544.48	549.72	552.83	541.37	536.13
MARUTI	7330.50	7304.93	7375.47	7420.43	7259.97	7189.43
NESTLEIND	14685.85	14658.33	14746.42	14806.98	14597.77	14509.68
NTPC	120.30	120.38	121.72	123.13	118.97	117.63
ONGC	124.15	124.35	125.00	125.85	123.50	122.85
POWERGRID	192.15	192.28	193.57	194.98	190.87	189.58
RELIANCE	1547.65	1548.42	1557.18	1566.72	1538.88	1530.12
SBIN	332.25	332.77	337.43	342.62	327.58	322.92
SUNPHARMA	443.60	444.20	448.40	453.20	439.40	435.20
TATAMOTORS	196.35	195.12	200.23	204.12	191.23	186.12
TATASTEEL	486.20	486.68	493.37	500.53	479.52	472.83
TCS	2213.55	2218.52	2229.03	2244.52	2203.03	2192.52
TECHM	776.25	776.87	781.28	786.32	771.83	767.42
TITAN	1154.05	1158.50	1166.25	1178.45	1146.30	1138.55
ULTRACEMCO	4444.60	4425.18	4483.47	4522.33	4386.32	4328.03
UPL	600.30	601.28	607.52	614.73	594.07	587.83
VEDL	159.95	160.28	162.97	165.98	157.27	154.58
WIPRO	251.75	252.65	254.30	256.85	250.10	248.45
YES BANK	44.75	45.63	47.47	50.18	42.92	41.08
ZEEL	263.00	266.17	270.33	277.67	258.83	254.67

(Source – IRIS)

Guru Call: From the expert's desk

Company	Reco Date	Reco Price (Buy on dips)	High till date	Return%
Aditiya Birla Capital	22-Nov-19	95.75	114.60	19.69%
Asian Paints Ltd.	30-Mar-17	1068.10	1834.80	71.78%
Avenue Supermarts Ltd.	31-Jul-17	898.55	2010.00	123.69%
Axis Bank Ltd.	10-Apr-18	519.30	827.75	59.40%
Bajaj Finance Ltd.	11-Oct-18	2271.00	4295.75	89.16%
Bajaj Finserv Ltd	1-Nov-16	3416.80	9530.95	178.94%
Bajaj Holdings And Investment Ltd	19-May-16	1499.10	3903.95	160.42%
Bandhan Bank Ltd.	19-Dec-18	556.40	650.00	16.82%
Bharat Petroleum Corporation Ltd.	23-Oct-19	531.50	549.00	3.29%
Century Textile and Industries Ltd	25-Nov-16	326.00	515.10	58.01%
Cipla Ltd	20-Mar-17	597.30	678.45	13.59%
Colgate Palmolive	16-Sep-19	1314.00	1642.60	25.01%
Container Corporation	22-Nov-19	577.00	603.00	4.51%
Dabur India	22-Oct-19	466.00	487.70	4.66%
DLF Ltd	10-Apr-19	194.30	245.00	26.09%
Emami Limited	26-Jun-19	290.35	355.40	22.40%
Godrej Industries Ltd.	12-Feb-18	550.70	657.60	19.41%
Godrej Properties Ltd.	19-Dec-18	685.30	1119.60	63.37%
Grasim Industries Ltd.	31-May-17	1132.50	1331.00	17.53%
Havells India Ltd.	8-Dec-17	525.75	806.85	53.47%
Housing Development Finance Corp Ltd	19-Dec-17	1720.00	2477.00	44.01%
HDFC Asset Management Company Ltd.	19-Dec-18	1572.90	3844.00	144.39%
HDFC Bank Limited	10-Nov-16	639.00	1305.50	104.30%
HDFC Life Insurance Co Ltd	19-Jan-18	485.05	646.40	33.26%
Hindustan Unilever Ltd.	13-Nov-17	1290.70	2190.00	69.68%
ICICI Bank Ltd.	6-Apr-18	278.65	552.20	98.17%
ICICI Prudential Life Insurance Company Ltd.	28-Jun-18	375.80	537.30	42.97%
ICICI Lombard General Insurance	19-Sep-19	1154.90	1440.40	24.72%
Infosys Ltd.	17-Aug-17	487.60	847.00	73.71%
Kansai Nerolac Paints	16-Dec-19	529.85	551.00	3.99%
Kotak Mahindra Bank Ltd	10-Nov-16	822.10	1734.80	111.02%
Mahindra & Mahindra Ltd.	5-Jun-17	709.25	993.00	40.01%
Manappuram Finance Ltd.	24-Apr-18	119.20	181.50	52.27%
Mahanagar Gas	15-Nov-19	1029.00	1089.00	5.83%
Marico Ltd.	4-Apr-18	325.00	404.00	24.31%
Nestle India Ltd.	27-Sep-18	9729.40	15146.90	55.68%
Oberoi Realty Ltd.	23-Nov-17	508.60	641.70	26.17%
Phoenix Mills Limited	7-Jul-19	655.15	883.00	34.78%
Pidilite Industries Limited	4-Oct-16	681.60	1493.50	119.12%
Prestige Estates Projects Limited	6-Jun-19	286.70	365.80	27.59%
Reliance Nippon	25-Nov-18	377.00	386.40	2.49%
Rites Ltd.	19-Dec-18	226.96	324.80	43.11%
RBL Bank	22-Nov-19	334.00	391.20	17.13%
State Bank Of India	28-Aug-18	308.00	373.80	21.36%
Shipping Corporation	22-Nov-19	64.00	65.95	3.05%
Tata Chemicals Limited	24-Dec-19	682.80	694.00	1.64%
Tata Global Beverages Ltd.	29-Jun-17	149.15	343.00	129.97%
Tata Consultancy Services Ltd.	8-Jan-18	1344.60	2296.20	70.77%
Trent Ltd.	19-Dec-18	348.40	567.90	63.00%
Ultratech Cement Ltd.	19-Dec-18	4084.60	4904.95	20.08%
Voltas Ltd.	27-Mar-18	613.90	725.40	18.16%
Whirlpool Of India Ltd.	7-Dec-16	872.25	2498.00	186.39%
Zee Entertainment	22-Nov-19	345.00	362.00	4.93%

NIFTY 50 STOCKS BELOW 200SMA

SCRIP NAME	SMA 200	CLOSING (10-01-2020)
INFY	745.36	738.15
WIPRO	262.49	251.75
ZEEL	334.31	263.00
LT	1400.55	1324.60
ITC	265.53	238.00
GRASIM	803.12	756.25
CIPLA	503.13	473.50
M&M	589.90	546.60
HEROMOTOCO	2571.91	2363.45
IOC	142.44	125.45
ONGC	144.89	124.15
TITAN	1176.00	1154.05
UPL	601.83	600.30
GAIL	143.13	125.35
POWERGRID	196.88	192.15
NTPC	125.32	120.30
YESBANK	106.68	44.75
COALINDIA	219.05	205.30
INFRADEL	261.67	249.45

Weekly Expiry Most Active Nifty Call Option

Symbol	Expiry Date	Strike Price	Highest Open Interest (OI)
NIFTY	16-Jan-19	12300	1522875
NIFTY	16-Jan-19	12500	1393200
NIFTY	16-Jan-19	12400	1196175

Weekly Expiry Most Active Nifty Put Option

Symbol	Expiry Date	Strike Price	Highest Open Interest (OI)
NIFTY	16-Jan-19	12200	1741500
NIFTY	16-Jan-19	12000	1655925
NIFTY	16-Jan-19	12100	1546425

Bulk Deals (NSE)

Deal Date	Scrip Name	Client Name	Deal Type	Quantity	Price
10-Jan-20	Reliance Infrastructu Ltd	INDUSIND BANK LTD CLIENT A/C	SELL	1521372	24.90
10-Jan-20	Sadbhav Infra Proj Ltd.	NOMURA INDIA INVESTMENT FUND MOTHER FUND	SELL	9457421	38.98

Bulk Deals (BSE)

N/A

 Note- Executed on 10th Jan 2020. Bulk Deal Buy/Sell done by fund house is considered.

Securities in Ban For Trade Date 13-01-2020

YESBANK

Research Analyst Registration No.

INH000002764

Contact

SMS: 'Arihant' to 56677

Website

www.arihantcapital.com

mail Id

arihant.research@arihantcapital.com

**Arihant is Forbes Asia's '200 Best under a \$Billion' Company
'Best Emerging Commodities Broker' awarded by UTV Bloomberg**

Disclaimer: This document has been prepared by Arihant Capital Markets Limited (hereinafter called as Arihant) and its subsidiaries and associated companies. This document does not constitute an offer or solicitation for the purchase and sale of any financial instrument by Arihant. Receipt and review of this document constitutes your agreement not to circulate, redistribute, retransmit or disclose to others the contents, opinions, conclusion, or information contained herein. This document has been prepared and issued on the basis of publicly available information, internally developed data and other sources believed to be reliable. Whilst meticulous care has been taken to ensure that the facts stated are accurate and opinions given are fair and reasonable, neither the analyst nor any employee of our company is in any way is responsible for its contents and nor is its accuracy or completeness guaranteed. This document is prepared for assistance only and is not intended to be and must not alone be taken as the basis for an investment decision. All recipients of this material should before dealing and or transacting in any of the products referred to in this material make their own investigation, seek appropriate professional advice. The investments discussed in this material may not be suitable for all investors. The recipient alone shall be fully responsible/are liable for any decision taken on the basis of this material. Arihant Capital Markets Ltd (including its affiliates) or its officers, directors, personnel and employees, including persons involved in the preparation or issuance of this material may; (a) from time to time, have positions in, and buy or sell or (b) be engaged in any other transaction and earn brokerage or other compensation in the financial instruments/products discussed herein or act as advisor or lender/borrower in respect of such securities/financial instruments/products or have other potential conflict of interest with respect to any recommendation and related information and opinions. The said persons may have acted upon and/or in a manner contradictory with the information contained here and may have a position or be otherwise interested in the investment referred to in this document before its publication. The user of this report assumes the entire risk of any use made of this data/report. Arihant especially states that it has no financial liability, whatsoever, to the users of this report.

Arihant Capital Markets Ltd

#1011 Solitaire Corporate Park Building No.10 1st Floor
Andheri Ghatkopar Link Road Chakala Andheri (E) Mumbai-400093
T. 022-42254800. Fax: 022-42254880
www.arihantcapital.com