

To join our research group on TELEGRAM, please click on the links - <https://bit.ly/37T17JR> and <https://bit.ly/2svtU7k>

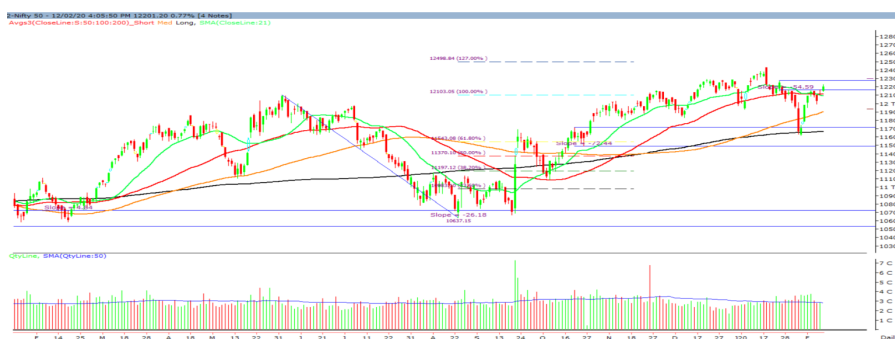
Thursday, 13th February, 2020

Indian Indices	Last Price	(%) Chg
BSE	41565.90	0.85
NSE	12201.20	0.77
World Indices		
Dow Jones	29551.42	0.94
Nasdaq	9725.96	0.90
Nikkei	23875.10	0.05
Hang Seng	27768.08	-0.21
FTSE	7534.37	0.47
Commodity	Last Price	(%) Chg
GOLD(\$/ounce)	1573.10	0.10
Silver (\$/Ounce)	17.54	0.27
Crude (\$/BBL)	55.97	0.32
Aluminium spot (\$/mt)	1731.00	-0.16
Copper SPOT (\$/mt)	5760.00	-0.03
Lead Spot (\$/MT)	1849.50	-0.12
Natural gas \$/MMBtu	1.84	-0.05
Currency	Last Price	(%) Chg
USD-INR	71.41	0.01
EUR-INR	78.08	0.12
Bond		
India 10 Yr Bond yield	6.47	0.15

52 Wk High (A group)			52 Wk Low (A group)		
Company	Close Price	52 Wk High	Company	Close Price	52 Wk Low
ADANI	248	251	BHEL	36	35
ABFRL	269	277	DBCORP	129	128
APOLLPH	1682	1731	PNB	55	55
ASIANP	1892	1915	--	--	--
ATUL	4970	5114	--	--	--

Source: BSE

Market Technical Outlook



Nifty opened higher traded in a narrow range with positive bias to close in green. On the daily chart we are observing that prices have managed to close above the 50-day SMA. Further, we are observing that prices have entered in the supply zone of 12149 to 12272. Hence, 12272 remains strong resistance. Any daily close above 12272 would propel Nifty to test 12350 – 12425 levels in couple of day.

Broadly, we are of the opinion that one needs to adopt positive approach at current level as stock activity is likely to continue.

News for stocks

ASHOKLEY	Ashok Leyland registered a massive 92.7% YoY fall in Q3FY20 standalone profit due to weak commercial vehicle demand. Profit fell sharply to Rs 27.7 crore in the quarter ended December 2019, from Rs 380.8 crore in the same period last year.
YESBANK	Yes Bank said it has received non-binding expressions of interest (Eoi) from at least four "prominent investors" and the capital raising effort will lead to a delay in publishing its December quarter financial results to on or before 14 March

Foreign Institutional Investments (FII's) Activities

Name of Segment	Net Buyer/seller	Rs In Cr
Index Futures	Net Buy	1144.77
Stock Futures	Net Buy	443.63
Net Future Position	Net Buy	1588.40
Index Options	Net Buy	515.43
Stock Options	Net Buy	35.59
Net Options Position	Net Buy	551.02
FII In cash Segment	Net Buy	48.81
DII In cash Segment	Net Buy	339.19
Net Cash Position	Net Buy	388.00

Technical Levels for Nifty 50 Companies

Company	Closing 12-02-2020	Buy/Sell Trigger	Resistance 1	Resistance 2	Support 1	Support 2
ADANI PORTS	374.1	374.87	378.13	382.17	370.83	367.57
ASIAN PAINT	1893.7	1896.2	1914.2	1934.7	1875.7	1857.7
AXIS BANK	755.25	755.65	760.3	765.35	750.6	745.95
BAJAJ-AUTO	3146.3	3155.93	3175.02	3203.73	3127.22	3108.13
BAJAJ FINSV	9771.85	9766.02	9846.78	9921.72	9691.08	9610.32
BAJFINANCE	4768.7	4757.63	4793.27	4817.83	4733.07	4697.43
BHARTIARTL	539.6	538.98	542.97	546.33	535.62	531.63
BPCL	474.75	478.12	482.33	489.92	470.53	466.32
BRITANNIA	3136.8	3156.67	3189.13	3241.47	3104.33	3071.87
CIPLA	446.8	448.92	452.83	458.87	442.88	438.97
COALINDIA	180.3	180.63	183.07	185.83	177.87	175.43
DRREDDY	3195.7	3191.12	3218.18	3240.67	3168.63	3141.57
EICHERMOT	19277.85	19187.88	19449.96	19622.08	19015.77	18753.68
GAIL	130.35	129.62	131.73	133.12	128.23	126.12
GRASIM	755.35	761.43	768.37	781.38	748.42	741.48
HCLTECH	614.1	614.97	619.63	625.17	609.43	604.77
HDFC	2437.6	2450.83	2473.77	2509.93	2414.67	2391.73
HDFCBANK	1249	1248.65	1253.25	1257.5	1244.4	1239.8
HEROMOTOCO	2423.05	2417.68	2435.37	2447.68	2405.37	2387.68
HINDALCO	193.65	193.75	196.3	198.95	191.1	188.55
HINDUNILVR	2260.35	2229.12	2303.23	2346.12	2186.23	2112.12
ICICIBANK	549.3	547.57	552.43	555.57	544.43	539.57
INDUSINDBK	1277.4	1277.33	1302.97	1328.53	1251.77	1226.13
INFRA TEL	243.35	244.52	246.83	250.32	241.03	238.72
INFY	781.05	779.8	784.5	787.95	776.35	771.65
IOC	115.1	115.57	116.48	117.87	114.18	113.27
ITC	213.05	213.22	214.63	216.22	211.63	210.22
JSWSTEEL	293.7	292.53	296.57	299.43	289.67	285.63
KOTAK BANK	1714.9	1703.3	1731.6	1748.3	1686.6	1658.3
LT	1297.3	1292.38	1304.77	1312.23	1284.92	1272.53
M&M	531	529.73	535.57	540.13	525.17	519.33
MARUTI	7043.3	7053.75	7099.55	7155.8	6997.5	6951.7
NESTLEIND	16297.7	16246.25	16524.05	16750.4	16019.9	15742.1
NTPC	116.8	117.37	118.33	119.87	115.83	114.87
ONGC	106.7	107	107.5	108.3	106.2	105.7
POWERGRID	189.35	189.93	191.32	193.28	187.97	186.58
RELIANCE	1470.3	1466.72	1478.43	1486.57	1458.58	1446.87
SBIN	320.2	323.12	326.98	333.77	316.33	312.47
SUNPHARMA	414.6	416.63	419.27	423.93	411.97	409.33
TATAMOTORS	170.95	171.08	173.17	175.38	168.87	166.78
TATASTEEL	447.95	448.33	454.12	460.28	442.17	436.38
TCS	2170.75	2168.58	2187.17	2203.58	2152.17	2133.58
TECHM	821.5	821.58	826.37	831.23	816.72	811.93
TITAN	1269	1274.6	1283.35	1297.7	1260.25	1251.5
ULTRACEMCO	4453.75	4462.13	4484.32	4514.88	4431.57	4409.38
UPL	573.9	575.78	581.12	588.33	568.57	563.23
VEDL	141.55	142.2	143.25	144.95	140.5	139.45
WIPRO	244.45	244.43	247.17	249.88	241.72	238.98
YESBANK	35.2	35.67	36.28	37.37	34.58	33.97
ZEEL	232.05	232.7	234.3	236.55	230.45	228.85

(Source – IRIS)

Guru Call: From the expert's desk

Company	Reco Date	Reco Price (Buy on dips)	High till date	Return%
Aditiya Birla Capital	22-Nov-19	95.75	115.35	20.47%
Asian Paints Ltd.	30-Mar-17	1068.1	1862.25	74.35%
Avenue Supermarts Ltd.	31-Jul-17	898.55	2010	123.69%
Axis Bank Ltd.	10-Apr-18	519.3	827.75	59.40%
Bajaj Finance Ltd.	11-Oct-18	2271	4295.75	89.16%
Bajaj Finserv Ltd	1-Nov-16	3416.8	9764.35	185.77%
Bajaj Holdings And Investment Ltd	19-May-16	1499.1	3903.95	160.42%
Bandhan Bank Ltd.	19-Dec-18	556.4	650	16.82%
Bharat Petroleum Corporation Ltd.	23-Oct-19	531.5	549	3.29%
Century Textile and Industries Ltd	25-Nov-16	326	634	94.48%
Cipla Ltd	20-Mar-17	597.3	678.45	13.59%
Colgate Palmolive	16-Sep-19	1314	1642.6	25.01%
Container Corporation	22-Nov-19	577	603	4.51%
Dabur India	22-Oct-19	466	501	7.51%
DLF Ltd	10-Apr-19	194.3	265.9	36.85%
Emami Limited	26-Jun-19	290.35	357.7	23.20%
Godrej Industries Ltd.	12-Feb-18	550.7	657.6	19.41%
Godrej Properties Ltd.	19-Dec-18	685.3	1119.6	63.37%
Grasim Industries Ltd.	31-May-17	1132.5	1331	17.53%
Havells India Ltd.	8-Dec-17	525.75	806.85	53.47%
Housing Development Finance Corp Ltd	19-Dec-17	1720	2499.9	45.34%
HDFC Asset Management Company Ltd.	19-Dec-18	1572.9	3844	144.39%
HDFC Bank Limited	10-Nov-16	639	1305.5	104.30%
HDFC Life Insurance Co Ltd	19-Jan-18	485.05	646.4	33.26%
Hindustan Unilever Ltd.	13-Nov-17	1290.7	2190	69.68%
ICICI Bank Ltd.	6-Apr-18	278.65	552.2	98.17%
ICICI Prudential Life Insurance Company Ltd.	28-Jun-18	375.8	537.3	42.97%
ICICI Lombard General Insurance	19-Sep-19	1154.9	1440.4	24.72%
Infosys Ltd.	17-Aug-17	487.6	847	73.71%
Kansai Nerolac Paints	16-Dec-19	529.85	551	3.99%
Kotak Mahindra Bank Ltd	10-Nov-16	822.1	1734.8	111.02%
Mahindra & Mahindra Ltd.	5-Jun-17	709.25	993	40.01%
Manappuram Finance Ltd.	24-Apr-18	119.2	189	58.56%
Mahanagar Gas	15-Nov-19	1029	1198	16.42%
Marico Ltd.	4-Apr-18	325	404	24.31%
Nestle India Ltd.	27-Sep-18	9729.4	15850	62.91%
Oberoi Realty Ltd.	23-Nov-17	508.6	641.7	26.17%
Phoenix Mills Limited	7-Jul-19	655.15	900	37.37%
Pidilite Industries Limited	4-Oct-16	681.6	1493.5	119.12%
Prestige Estates Projects Limited	6-Jun-19	286.7	426	48.59%
Reliance Nippon	25-Nov-18	377	386.4	2.49%
Rites Ltd.	19-Dec-18	226.96	324.8	43.11%
RBL Bank	22-Nov-19	334	391.2	17.13%
State Bank Of India	28-Aug-18	308	373.8	21.36%
Shipping Corporation	22-Nov-19	64	65.95	3.05%
Tata Chemicals Limited	24-Dec-19	682.8	762	11.60%
Tata Global Beverages Ltd.	29-Jun-17	149.15	399.45	167.82%
Tata Consultancy Services Ltd.	8-Jan-18	1344.6	2296.2	70.77%
Trent Ltd.	19-Dec-18	348.4	611.95	75.65%
Ultratech Cement Ltd.	19-Dec-18	4084.6	4904.95	20.08%
Voltas Ltd.	27-Mar-18	613.9	730.95	19.07%
Whirlpool Of India Ltd.	7-Dec-16	872.25	2510	187.76%
Zee Entertainment	22-Nov-19	345	362	4.93%

NIFTY 50 STOCKS BELOW 200SMA

SCRIP NAME	SMA 200	CLOSING (12-02-2020)
WIPRO	259.73	244.45
ZEEL	315.19	232.05
LT	1393.89	1297.3
ITC	257.2	213.05
GRASIM	795.69	755.35
CIPLA	493.9	446.8
M&M	576.83	531
HINDALCO	196.24	193.65
HEROMOTOCO	2549.81	2423.05
SUNPHARMA	422.07	414.6
IOC	137.65	115.1
ONGC	139.77	106.7
VEDL	153.5	141.55
UPL	593.97	573.9
GAIL	137.11	130.35
EICHERMOT	19613.44	19277.85
INDUSINDBK	1425.49	1277.4
ADANIPTS	386.67	374.1
POWERGRID	196.33	189.35
NTPC	122.93	116.8
YESBANK	79.96	35.2
COALINDIA	213.19	180.3
INFRADEL	253.02	243.35

Bulk Deals (BSE)

Deal Date	Scrip Name	Client Name	Deal Type	Quantity	Price
12-Feb-20	PARAGMILK	NORGES BANK ON ACCOUNT OF THE GOVERNMENT PENSION FUND GLOBAL	S	815000	92.00

Bulk Deals (NSE)

Deal Date	Scrip Name	Client Name	Deal Type	Quantity	Price
12-Feb-20	Parag Milk Foods Ltd.	NORGES BANK ON ACCOUNT OF THE GOVERNMENT PENSION	SELL	602597	93.06

Note- Executed on 12th Feb 2020. Bulk Deal Buy/Sell done by fund house is considered.

Weekly Expiry Most Active Nifty Call Option

Symbol	Expiry Date	Strike Price	Highest Open Interest (OI)
NIFTY	13-Feb-20	12300	2579925
NIFTY	13-Feb-20	12200	2289825
NIFTY	13-Feb-20	12250	1836975

Weekly Expiry Most Active Nifty Put Option

Symbol	Expiry Date	Strike Price	Highest Open Interest (OI)
NIFTY	13-Feb-20	12050	2789550
NIFTY	13-Feb-20	12200	2755050
NIFTY	13-Feb-20	12000	2476425

Securities in Ban For Trade Date 13-02-2020

YESBANK

Research Analyst Registration No.

INH000002764

Contact

SMS: 'Arihant' to 56677

Website
www.arihantcapital.com
mail Id
arihant.research@arihantcapital.com

Arihant is Forbes Asia's '200 Best under a \$Billion' Company
'Best Emerging Commodities Broker' awarded by UTV Bloomberg

Disclaimer: This document has been prepared by Arihant Capital Markets Limited (hereinafter called as Arihant) and its subsidiaries and associated companies. This document does not constitute an offer or solicitation for the purchase and sale of any financial instrument by Arihant. Receipt and review of this document constitutes your agreement not to circulate, redistribute, retransmit or disclose to others the contents, opinions, conclusion, or information contained herein. This document has been prepared and issued on the basis of publicly available information, internally developed data and other sources believed to be reliable. Whilst meticulous care has been taken to ensure that the facts stated are accurate and opinions given are fair and reasonable, neither the analyst nor any employee of our company is in any way is responsible for its contents and nor is its accuracy or completeness guaranteed. This document is prepared for assistance only and is not intended to be and must not alone be taken as the basis for an investment decision. All recipients of this material should before dealing and or transacting in any of the products referred to in this material make their own investigation, seek appropriate professional advice. The investments discussed in this material may not be suitable for all investors. The recipient alone shall be fully responsible/are liable for any decision taken on the basis of this material. Arihant Capital Markets Ltd (including its affiliates) or its officers, directors, personnel and employees, including persons involved in the preparation or issuance of this material may; (a) from time to time, have positions in, and buy or sell or (b) be engaged in any other transaction and earn brokerage or other compensation in the financial instruments/products discussed herein or act as advisor or lender/borrower in respect of such securities/financial instruments/products or have other potential conflict of interest with respect to any recommendation and related information and opinions. The said persons may have acted upon and/or in a manner contradictory with the information contained here and may have a position or be otherwise interested in the investment referred to in this document before its publication. The user of this report assumes the entire risk of any use made of this data/report. Arihant especially states that it has no financial liability, whatsoever, to the users of this report.

Arihant Capital Markets Ltd

#1011 Solitaire Corporate Park Building No.10 1st Floor
 Andheri Ghatkopar Link Road Chakala Andheri (E) Mumbai-400093
 T. 022-42254800. Fax: 022-42254880
www.arihantcapital.com