

To join our research group on TELEGRAM, please click on the links - <https://bit.ly/2Rt4NyS> and <https://bit.ly/3ciqvDn>

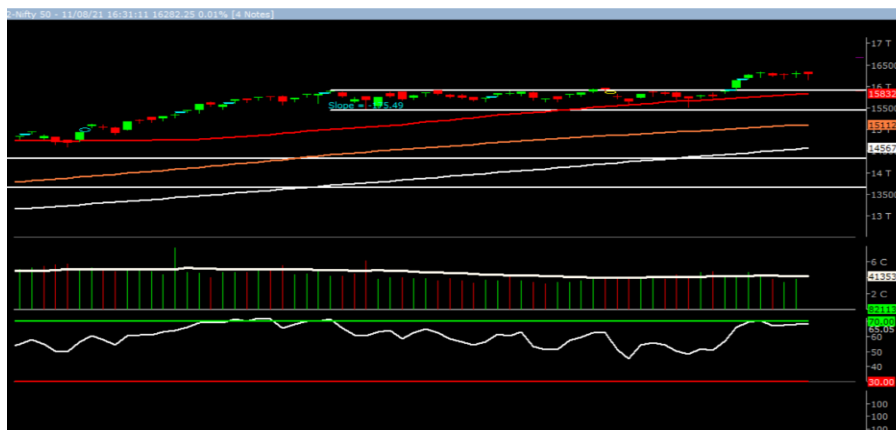
Friday, 13<sup>th</sup> Aug, 2021

| Indian Indices         | Last Price | (%) Chg |
|------------------------|------------|---------|
| NSE                    | 16364.40   | 0.50    |
| BSE                    | 54843.98   | 0.58    |
| World Indices          | Last Price | (%) Chg |
| Dow Jones              | 35499.85   | 0.04    |
| Nasdaq                 | 14816.26   | 0.35    |
| Nikkei                 | 28043.01   | 0.10    |
| Hang Seng              | 26495.91   | -0.08   |
| FTSE                   | 7193.23    | -0.37   |
| Commodity              | Last Price | (%) Chg |
| GOLD(\$/ounce)         | 1756.50    | 0.27    |
| Silver (\$/Ounce)      | 23.26      | 0.60    |
| Crude (\$/BBL)         | 70.89      | -0.59   |
| Aluminium spot (\$/mt) | 2587.00    | 0.53    |
| Copper SPOT (\$/mt)    | 9521.00    | 0.57    |
| Lead Spot (\$/MT)      | 2311.00    | 0.27    |
| Natural gas \$/MMBtu   | 3.91       | -0.64   |
| Currency               | Last Price | (%) Chg |
| USD-INR                | 74.35      | -0.26   |
| EUR-INR                | 87.37      | -0.04   |
| Bond                   |            |         |
| India 10 Yr Bond yield | 6.22       | -0.14   |

| 52 Wk High (A group) |             |            | 52 Wk Low (A group) |             |           |
|----------------------|-------------|------------|---------------------|-------------|-----------|
| Company              | Close Price | 52 Wk High | Company             | Close Price | 52 Wk Low |
| BATA                 | 1671        | 1754       | --                  | --          | --        |
| BHARTFOR             | 831         | 846        | --                  | --          | --        |
| AIRTEL               | 621         | 629        | --                  | --          | --        |
| CUMMINS              | 949         | 970        | --                  | --          | --        |
| INFY                 | 1685        | 1696       | --                  | --          | --        |

Source: BSE

### Market Technical Outlook



Nifty opened higher made a new all-time high and traded in a narrow range with positive bias to close in green. On the daily chart we are observing six consecutive narrow range body formations which suggest that markets are cautiously positive at current level. In coming trading session if Nifty for first hour trades above 16375 then it may test 16460 -16540 levels. On the downside, 16270 - 16150 levels may act as support for the day.

**We still continue to maintain our stance that stock specific activity is likely to continue in small and Mid-cap stocks.**

### Foreign Institutional Investments (FIIs) Activities

| Name of Segment             | Net Buyer/seller | Rs In Cr       |
|-----------------------------|------------------|----------------|
| Index Futures               | Net Buy          | 888.59         |
| Stock Futures               | Net Buy          | 574.85         |
| <b>Net Future Position</b>  | <b>Net Buy</b>   | <b>1463.44</b> |
| Index Options               | Net Buy          | 4272.59        |
| Stock Options               | Net Sell         | -16.40         |
| <b>Net Options Position</b> | <b>Net Buy</b>   | <b>4256.19</b> |
| FII In cash Segment         | Net Sell         | -212.11        |
| DII In cash Segment         | Net Buy          | 307.75         |
| <b>Net Cash Position</b>    | <b>Net Buy</b>   | <b>95.64</b>   |

**Guru Call: From the expert's desk**

| Company                               | Reco Date  | Reco Price (Buy on dips) | High till date | Return% |
|---------------------------------------|------------|--------------------------|----------------|---------|
| Aarti drugs                           | 21-Aug-20  | 783.00                   | 1026.95        | 31.16%  |
| Accelya Solutions India Ltd           | 10-Jun-21  | 1203.90                  | 1539.40        | 27.87%  |
| Aditya Birla Fashion and Retail Ltd   | 08-Feb-21  | 164.40                   | 231.65         | 40.91%  |
| Aegis Logistics                       | 11-Sep-20  | 204.05                   | 387.90         | 90.10%  |
| Ajanta Pharma                         | 04-Aug-20  | 1661.05                  | 2197.90        | 32.32%  |
| Alkem                                 | 08-Jul-20  | 2427.00                  | 3558.90        | 46.64%  |
| Ambuja Cements Ltd                    | 07-Jun-21  | 339.05                   | 408.09         | 20.36%  |
| Asian Paints Ltd.                     | 30-Mar-17  | 1068.10                  | 3179.50        | 197.68% |
| Astec LifeSciences Limited            | 09-Jul-21  | 1360.70                  | 1487.00        | 9.28%   |
| Avenue Supermarts Ltd.                | 31-Jul-17  | 898.55                   | 3448.95        | 283.84% |
| Axis Bank Ltd.                        | 10-Apr-18  | 519.30                   | 827.75         | 59.40%  |
| Bajaj Consumer Care Ltd               | 03-Feb-21  | 255.80                   | 324.00         | 26.66%  |
| Bajaj Finance Ltd.                    | 11-Oct-18  | 2271.00                  | 6342.80        | 179.30% |
| Bajaj Finserv Ltd                     | 1-Nov-16   | 3416.80                  | 13110.00       | 283.69% |
| Bajaj Holdings And Investment Ltd     | 19-May-16  | 1499.10                  | 4060.00        | 170.83% |
| Bajaj-Auto                            | 12-Jun-20  | 2782.00                  | 4361.40        | 56.77%  |
| Bandhan Bank Ltd.                     | 19-Dec-18  | 556.40                   | 650.00         | 16.82%  |
| Berger Paints India Ltd               | 07-Dec-20  | 672.20                   | 872.95         | 29.86%  |
| Bharti Airtel Limited                 | 03-Dec-20  | 479.90                   | 623.00         | 29.82%  |
| Birla Corporation Limited             | 28-Jun-21  | 1240.00                  | 1450.80        | 17.00%  |
| Britannia                             | 12-June-20 | 3366.00                  | 4010.00        | 19.13%  |
| Cadila                                | 03-Apr-20  | 274.00                   | 673.70         | 145.88% |
| CAMS                                  | 08-Oct-20  | 1334.90                  | 3740.65        | 180.22% |
| CDSL                                  | 17-Sep-20  | 485.90                   | 1579.00        | 224.96% |
| Ceat Limited                          | 28-Jan-21  | 1541.05                  | 1763.00        | 14.40%  |
| Century Textile and Industries Ltd    | 25-Nov-16  | 750.40                   | 1471.20        | 96.06%  |
| CESC Ltd                              | 08-Jun-21  | 758.20                   | 870.90         | 14.86%  |
| CG Power and Industrial Solutions Ltd | 10-Feb-21  | 45.25                    | 91.95          | 103.20% |
| Chola finance                         | 25-Sep-20  | 238.70                   | 600.95         | 151.76% |
| Chola Holding                         | 23-Sep-20  | 391.80                   | 711.00         | 81.47%  |
| Cipla Ltd                             | 20-Mar-17  | 597.30                   | 997.00         | 66.92%  |
| Colgate Palmolive                     | 16-Sep-19  | 1314.00                  | 1794.85        | 36.59%  |
| Crompton Greaves Consumer             | 11-Jun-20  | 225.00                   | 496.70         | 120.76% |
| Dabur India                           | 22-Oct-19  | 466.00                   | 605.00         | 29.83%  |
| DFM Foods Ltd                         | 03-Feb-21  | 409.05                   | 453.80         | 10.94%  |
| Divislab                              | 04-Aug-20  | 2641.00                  | 4848.00        | 83.57%  |
| DLF Ltd                               | 10-Apr-19  | 194.30                   | 338.80         | 74.37%  |
| Dr Reddy                              | 04-Aug-20  | 4530.00                  | 5614.60        | 23.94%  |
| Emami Limited                         | 26-Jun-19  | 290.35                   | 578.50         | 99.24%  |
| Finolex Cables Ltd                    | 08-Feb-21  | 368.80                   | 557.70         | 51.22%  |
| Finolex Industries Ltd                | 01-Jul-21  | 184.25                   | 187.35         | 1.68%   |
| Fortis                                | 14-Jul-20  | 127.00                   | 253.90         | 99.92%  |
| Galaxy Surface                        | 01-Jul-20  | 1557.00                  | 3294.70        | 111.61% |
| Gillette India Limited                | 11-Jun-21  | 5847.00                  | 6249.00        | 6.88%   |
| Glaxosmithkline Pharmaceuticals Ltd   | 27-Aug-20  | 1455.75                  | 1807.50        | 24.16%  |
| Godrej Consumer Products Limited      | 16-Jun-20  | 634.00                   | 980.70         | 54.68%  |
| Godrej Industries Ltd.                | 12-Feb-18  | 550.70                   | 657.60         | 19.41%  |
| Godrej Properties Ltd                 | 04-Dec-20  | 1200.30                  | 1596.80        | 33.03%  |
| Greaves Cotton Ltd                    | 14-Jul-21  | 176.65                   | 182.00         | 3.03%   |
| HDFC Asset Management Company Ltd.    | 19-Dec-18  | 1572.90                  | 3844.00        | 144.39% |
| HDFC Bank Limited                     | 10-Nov-16  | 639.00                   | 1641.00        | 156.81% |
| HDFC Life Insurance Co Ltd            | 19-Jan-18  | 485.05                   | 746.00         | 53.80%  |

**Guru Call: From the expert's desk**

| Company                                      | Reco Date  | Reco Price (Buy on dips) | High till date | Return% |
|--|------------|--------------------------|----------------|---------|
| Hero Motocorp Ltd                            | 29-Sep-20  | 3174.95                  | 3629.05        | 14.30%  |
| Hindustan Unilever Ltd.                      | 13-Nov-17  | 1290.70                  | 2614.30        | 102.55% |
| Housing Development Finance Corp Ltd         | 19-Dec-17  | 1720.00                  | 2896.00        | 68.37%  |
| ICICI Bank Ltd.                              | 06-Apr-18  | 278.65                   | 679.40         | 143.82% |
| ICICI Lombard General Insurance              | 19-Sep-19  | 1154.90                  | 1626.45        | 40.83%  |
| ICICI Prudential Life Insurance Company Ltd. | 28-Jun-18  | 375.80                   | 660.20         | 75.68%  |
| ICICI Securities Ltd                         | 24-Sep-20  | 466.65                   | 802.00         | 71.86%  |
| Indusindbnk                                  | 08-Jun-20  | 451.00                   | 1119.50        | 148.23% |
| Infosys Ltd.                                 | 17-Aug-17  | 487.60                   | 1596.85        | 227.49% |
| Ion Exchange (India) Ltd                     | 01-June-21 | 1464.95                  | 2947.00        | 101.17% |
| Ipca Lab                                     | 11-Aug-20  | 2099.00                  | 2460.00        | 17.20%  |
| JK Cement                                    | 19-Jun-20  | 1378.00                  | 3289.00        | 138.68% |
| JK Lakshmi Cement                            | 03-Jul-20  | 276.00                   | 721.25         | 161.32% |
| Jubilant Ingrevia Ltd                        | 22-Jul-21  | 623.00                   | 640.00         | 2.73%   |
| Justdial                                     | 07-Oct-20  | 385.60                   | 1138.00        | 195.12% |
| Jyoti lab                                    | 05-Aug-20  | 132.90                   | 187.30         | 40.93%  |
| Kansai Nerolac Paints                        | 16-Dec-19  | 529.85                   | 680.00         | 28.34%  |
| Kotak Mahindra Bank Ltd                      | 10-Nov-16  | 822.10                   | 2049.00        | 149.24% |
| L&T Finance Holdings Ltd                     | 03-Dec-20  | 84.05                    | 113.40         | 34.92%  |
| LIC Housing Finance Limited                  | 06-Jan-21  | 408.30                   | 542.45         | 32.86%  |
| Mahanagar Gas                                | 15-Nov-19  | 1029.00                  | 1284.40        | 24.82%  |
| Mahindra & Mahindra Fin. Services Ltd.       | 08-Dec-20  | 175.25                   | 224.30         | 27.99%  |
| Mahindra & Mahindra Ltd.                     | 05-Jun-17  | 709.25                   | 993.00         | 40.01%  |
| Manappuram Finance Ltd.                      | 24-Apr-18  | 119.20                   | 194.80         | 63.42%  |
| Marico Ltd.                                  | 04-Apr-18  | 325.00                   | 549.60         | 69.11%  |
| Maruti Suzuki India Ltd                      | 13-Aug-20  | 5988.85                  | 8329.00        | 39.08%  |
| Nam-India                                    | 25-Nov-18  | 377.00                   | 452.90         | 20.13%  |
| Nestle India Ltd.                            | 27-Sep-18  | 9729.40                  | 18844.00       | 93.68%  |
| NRB Bearings Limited                         | 18-Jun-21  | 134.30                   | 154.40         | 14.97%  |
| Oberoi Realty Ltd.                           | 23-Nov-17  | 508.60                   | 729.00         | 43.33%  |
| PEL  | 02-Sep-20  | 1246.25                  | 2520.90        | 102.28% |
| Pfizer                                       | 22-Jul-20  | 4150.00                  | 5900.00        | 42.17%  |
| Phoenix Mills Limited                        | 07-Jul-19  | 655.15                   | 979.00         | 49.43%  |
| Pidilite Industries Limited                  | 04-Oct-16  | 681.60                   | 2333.95        | 242.42% |
| Polycab India Ltd                            | 06-Jan-21  | 1176.10                  | 2033.00        | 72.86%  |
| Raymond                                      | 25-Sep-20  | 263.55                   | 473.90         | 79.81%  |
| RBL Bank                                     | 25-Sep-20  | 164.95                   | 274.30         | 66.29%  |
| Reliance                                     | 22-Apr-20  | 1351.00                  | 2369.35        | 75.38%  |
| Rites Ltd.                                   | 19-Dec-18  | 226.96                   | 331.00         | 45.84%  |
| SBI Card                                     | 16-Jul-20  | 719.00                   | 1139.50        | 58.48%  |
| SBI Life                                     | 20-May-20  | 715.00                   | 1064.95        | 48.94%  |
| State Bank of India                          | 03-Feb-21  | 335.95                   | 441.95         | 31.55%  |
| Sun Pharma                                   | 07-Aug-20  | 525.00                   | 721.85         | 37.50%  |
| Suprajit Engineering Ltd.                    | 08-Feb-21  | 244.30                   | 324.90         | 32.99%  |
| Syngene                                      | 24-Sep-20  | 565.70                   | 700.00         | 23.74%  |
| Tata Chemicals Limited                       | 24-Dec-19  | 296.89                   | 833.95         | 180.90% |
| Tata Coffee Ltd.                             | 28-Jun-21  | 183.35                   | 198.65         | 8.34%   |
| Tata Consultancy Services Ltd.               | 08-Jan-18  | 1344.60                  | 3399.65        | 152.84% |
| Tata Consumer                                | 29-Jun-17  | 149.15                   | 786.85         | 427.56% |
| Trent Ltd.                                   | 19-Dec-18  | 348.40                   | 947.95         | 172.09% |
| Ultratech Cement Ltd.                        | 19-Dec-18  | 4084.60                  | 7544.00        | 84.69%  |
| VEDL   | 28-Jun-21  | 260.80                   | 276.15         | 5.89%   |
| Voltas Ltd.                                  | 27-Mar-18  | 613.90                   | 1132.00        | 84.39%  |
| Whirlpool Of India Ltd.                      | 07-Dec-16  | 872.25                   | 2787.00        | 219.52% |
| Shilpa Medicare Ltd                          | 20-Jul-21  | 661.75                   | 668.90         | 1.08%   |

**Guru Call: From the expert's desk**

| Company           | Reco Date | Reco Price (Buy on dips) | High till date | Return% |
|-------------------|-----------|--------------------------|----------------|---------|
| Zee Entertainment | 22-Nov-19 | 345.00                   | 362.00         | 4.93%   |

**NIFTY 50 STOCKS BELOW 200SMA**

| SCRIP NAME | SMA 200 | CLOSING (12-08-2021) |
|------------|---------|----------------------|
| DRREDDY    | 4982.15 | 4716.4               |
| HEROMOTOCO | 3051.8  | 2782.95              |
| KOTAKBANK  | 1806.91 | 1787.7               |
| MARUTI     | 7216.3  | 7012                 |
| HDFCLIFE   | 676.17  | 674.95               |
| --         | --      | --                   |
| --         | --      | --                   |
| --         | --      | --                   |
| --         | --      | --                   |
| --         | --      | --                   |
| --         | --      | --                   |
| --         | --      | --                   |
| --         | --      | --                   |

**Weekly Expiry Most Active Nifty Call Option**

| Symbol | Expiry Date | Strike Price | Highest Open Interest (Contracts) |
|--------|-------------|--------------|-----------------------------------|
| NIFTY  | 18-Aug-2021 | 16500        | 37,289                            |
| NIFTY  | 18-Aug-2021 | 16300        | 35,997                            |
| NIFTY  | 18-Aug-2021 | 16400        | 35,301                            |

**Weekly Expiry Most Active Nifty Put Option**

| Symbol | Expiry Date | Strike Price | Highest Open Interest (Contracts) |
|--------|-------------|--------------|-----------------------------------|
| NIFTY  | 18-Aug-2021 | 16300        | 60,432                            |
| NIFTY  | 18-Aug-2021 | 16200        | 41,929                            |
| NIFTY  | 18-Aug-2021 | 16000        | 35,356                            |

**Securities in Ban For Trade Date 13-08-2021**

CANBK, IBULHSGFIN, PNB, RBLBANK, SUNTV

**Bulk Deals (NSE)**

| Deal Date | Scrip Name | Client Name   | Deal Type | Quantity | Price  |
|-----------|------------|---|-----------|----------|--------|
| 12-Aug-21 | ALBERTDAVD | TRIPTA RANI   | BUY       | 49130    | 635.32 |
| 12-Aug-21 | GLOBUSSPR  | RAM BAGH FACILITY SERVICES LLP  | BUY       | 162000   | 862.05 |
| 12-Aug-21 | GLOBUSSPR  | LONG TERM EQUITY FUND   | BUY       | 175000   | 862.05 |
| 12-Aug-21 | GUFICBIO   | FINANCIAL INVESTORS TRUST A/C GRANDEUR PEAK GLOBAL OPPORTUNITIES FUND | BUY       | 500000   | 205.89 |
| 12-Aug-21 | FMNL       | ISHBHOO MI FABTRADERS PRIVATE LIMITED                                 | SELL      | 335553   | 10.01  |
| 12-Aug-21 | GLOBUSSPR  | INTERNATIONAL ASSET RECONSTRUCTION COMPANY PVT LTD                    | SELL      | 337000   | 862.05 |
| 12-Aug-21 | JALAN      | JALAN MEENA   | SELL      | 168000   | 8.55   |
| 12-Aug-21 | JBFIND     | ICM FINANCE PRIVATE LIMITED   | SELL      | 1000000  | 30.65  |

**Bulk Deals (BSE)**

| Deal Date | Scrip Name | Client Name   | Deal Type | Quantity | Price  |
|-----------|------------|---|-----------|----------|--------|
| 12-Aug-21 | BAPACK     | INDUSTRIAL PROMOTOIN & INVESTMENT CORPO. OF ORISSA LTD. | S         | 216333   | 188.73 |
| 12-Aug-21 | INTLCONV   | VIVEK MUNDRA  | B         | 400248   | 61.09  |
| 12-Aug-21 | INTLCONV   | MADHUSUDAN MURLIDHAR KELA                               | S         | 431678   | 61.17  |
| 12-Aug-21 | LKPFIN     | TEAM INDIA MANAGERS LTD                                 | S         | 179000   | 129.50 |
| 12-Aug-21 | LKPFIN     | INDIA MAX INVESTMENT FUND LIMITED                       | S         | 200915   | 129.50 |
| 12-Aug-21 | LKPFIN     | VIJAY KUNDANMAL CHORARIA                                | B         | 385,000  | 129.50 |

**Note- Executed on 12<sup>th</sup> Aug 2021. Bulk Deal Buy/Sell done by fund house is considered**

**Research Analyst Registration No.**

INH000002764

**Contact**

SMS: 'Arihant' to 56677

**Website**
[www.arihantcapital.com](http://www.arihantcapital.com)
**mail Id**
[arihant.research@arihantcapital.com](mailto:arihant.research@arihantcapital.com)

**Arihant is Forbes Asia's '200 Best under a \$Billion' Company  
'Best Emerging Commodities Broker' awarded by UTV Bloomberg**

**Disclaimer:** This document has been prepared by Arihant Capital Markets Limited (hereinafter called as Arihant) and its subsidiaries and associated companies. This document does not constitute an offer or solicitation for the purchase and sale of any financial instrument by Arihant. Receipt and review of this document constitutes your agreement not to circulate, redistribute, retransmit or disclose to others the contents, opinions, conclusion, or information contained herein. This document has been prepared and issued on the basis of publicly available information, internally developed data and other sources believed to be reliable. Whilst meticulous care has been taken to ensure that the facts stated are accurate and opinions given are fair and reasonable, neither the analyst nor any employee of our company is in any way is responsible for its contents and nor is its accuracy or completeness guaranteed. This document is prepared for assistance only and is not intended to be and must not alone be taken as the basis for an investment decision. All recipients of this material should before dealing and or transacting in any of the products referred to in this material make their own investigation, seek appropriate professional advice. The investments discussed in this material may not be suitable for all investors. The recipient alone shall be fully responsible/are liable for any decision taken on the basis of this material. Arihant Capital Markets Ltd (including its affiliates) or its officers, directors, personnel and employees, including persons involved in the preparation or issuance of this material may; (a) from time to time, have positions in, and buy or sell or (b) be engaged in any other transaction and earn brokerage or other compensation in the financial instruments/products discussed herein or act as advisor or lender/borrower in respect of such securities/financial instruments/products or have other potential conflict of interest with respect to any recommendation and related information and opinions. The said persons may have acted upon and/or in a manner contradictory with the information contained here and may have a position or be otherwise interested in the investment referred to in this document before its publication. The user of this report assumes the entire risk of any use made of this data/report. Arihant especially states that it has no financial liability, whatsoever, to the users of this report.

## Arihant Capital Markets Ltd

#1011 Solitaire Corporate Park Building No.10 1<sup>st</sup> Floor  
 Andheri Ghatkopar Link Road Chakala Andheri (E) Mumbai-400093  
 T. 022-42254800. Fax: 022-42254880  
[www.arihantcapital.com](http://www.arihantcapital.com)