

To join our research group on TELEGRAM, please click on the links - <https://bit.ly/37T17JR> and <https://bit.ly/2svtU7k>

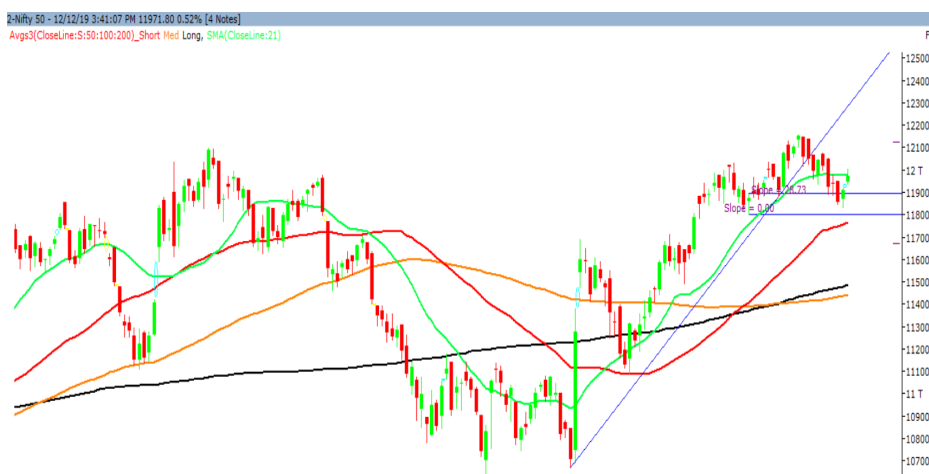
Friday, 13th December, 2019

Indian Indices	Last Price	(%) Chg
BSE	40581.71	0.42
NSE	11971.80	0.52
World Indices		
Dow Jones	28132.05	0.79
Nasdaq	8717.32	0.73
Nikkei	23994.34	2.43
Hang Seng	27460.74	1.73
FTSE	7273.47	0.79
Commodity	Last Price	(%) Chg
GOLD(\$/ounce)	1473.00	0.05
Silver (\$/Ounce)	16.96	0.09
Crude (\$/BBL)	64.67	0.73
Aluminium spot (\$/mt)	1779.25	0.41
Copper SPOT (\$/mt)	6202.50	0.66
Lead Spot (\$/MT)	1942.00	0.73
Natural gas \$/MMBtu	2.32	-0.17
Currency	Last Price	(%) Chg
USD-INR	70.94	-0.06
EUR-INR	79.00	0.33
Bond	Last Price	(%) Chg
India 10 Yr Bond yield	6.77	0.16

52 Wk High (A group)			52 Wk Low (A group)		
Company	Close Price	52 Wk High	Company	Close Price	52 Wk Low
CRISIL	1704	1727	ALBK	19	19
DIVISL	1825	1840	ARVIND	35	33
DLF	224	227	DHFL	14	14
KOTAK	1715	1720	OFSS	2927	2482
SRF	3303	3323	UBL	1209	1184

Source: BSE

Market Technical Outlook



Nifty opened up with a gap and traded in a narrow range with positive bias to close in green. On the daily chart, we are observing an upward gap area in the range of 11923 to 11934 levels. Normally upward gaps do act as support for the prices. At present the daily trend has turned up, hence one need to adopt cautiously positive approach at current level.

In coming trading session if Nifty open in the range of 11954 – 11943 levels then go long, with a stop loss of 11930 for a target of 11987 – 11998 – 12042 levels.

News for stocks

ASHOK LEYLAND	Ashok Leyland appointed Vipin Sondhi as the chief executive officer and managing director of the company till December 2024, subject to the approval of shareholders.
COAL INDIA	Coal India is hoping to increase fuel stocks at power plants to the prescribed level of 22 days, which requires 36 million tonnes to be stored at power stations.

Foreign Institutional Investments (FII's) Activities

Name of Segment	Net Buyer/seller	Rs In Cr
Index Futures	Net Buy	719.58
Stock Futures	Net Sell	-64.34
Net Future Position	Net Buy	655.24
Index Options	Net Buy	501.75
Stock Options	Net Buy	43.20
Net Options Position	Net Buy	544.95
FII In cash Segment	Net Sell	-683.83
DII In cash Segment	Net Buy	810.23
Net Cash Position	Net Buy	126.40

Technical Levels for Nifty 50 Companies

Company	Closing 12-12-2019	Buy/Sell Trigger	Resistance 1	Resistance 2	Support 1	Support 2
ADANI PORTS	372.50	373.30	375.70	378.90	370.10	367.70
ASIAN PAINT	1750.65	1744.25	1760.40	1770.15	1734.50	1718.35
AXIS BANK	722.10	720.85	726.55	731.00	716.40	710.70
BAJAJ-AUTO	3261.45	3267.12	3277.63	3293.82	3250.93	3240.42
BAJAJ FINSV	9169.25	9144.82	9208.43	9247.62	9105.63	9042.02
BAJ FINANCE	4057.15	4044.07	4078.08	4099.02	4023.13	3989.12
BHARTIARTL	438.65	439.67	442.83	447.02	435.48	432.32
BPCL	491.75	492.02	498.03	504.32	485.73	479.72
BRITANNIA	3073.55	3061.25	3092.30	3111.05	3042.50	3011.45
CIPLA	461.05	458.78	465.37	469.68	454.47	447.88
COALINDIA	190.15	189.08	191.92	193.68	187.32	184.48
DRREDDY	2905.65	2904.82	2919.63	2933.62	2890.83	2876.02
EICHERMOT	21953.55	21878.75	22175.80	22398.05	21656.50	21359.45
GAIL	118.95	118.67	120.43	121.92	117.18	115.42
GRASIM	774.20	774.25	778.95	783.70	769.50	764.80
HCLTECH	536.35	539.73	544.42	552.48	531.67	526.98
HDFC	2318.45	2316.15	2329.30	2340.15	2305.30	2292.15
HDFC BANK	1263.60	1262.02	1271.03	1278.47	1254.58	1245.57
HEROMOTOCO	2334.05	2328.60	2349.85	2365.65	2312.80	2291.55
HINDALCO	201.45	201.00	204.70	207.95	197.75	194.05
HINDUNILVR	2007.35	2014.62	2027.23	2047.12	1994.73	1982.12
ICICIBANK	535.35	534.08	538.37	541.38	531.07	526.78
INDUSINDBK	1444.15	1438.78	1456.37	1468.58	1426.57	1408.98
INFRA TEL	252.20	253.43	258.27	264.33	247.37	242.53
INFY	702.10	707.45	715.35	728.60	694.20	686.30
IOC	128.10	127.27	129.23	130.37	126.13	124.17
ITC	238.55	238.78	239.97	241.38	237.37	236.18
JSWSTEEL	255.60	254.48	258.77	261.93	251.32	247.03
KOTAK BANK	1715.60	1705.87	1729.73	1743.87	1691.73	1667.87
LT	1279.70	1276.92	1285.63	1291.57	1270.98	1262.27
M&M	511.90	511.45	514.70	517.50	508.65	505.40
MARUTI	6999.80	7007.08	7038.67	7077.53	6968.22	6936.63
NESTLEIND	14154.95	14154.92	14232.73	14310.52	14077.13	13999.32
NTPC	114.45	114.20	115.20	115.95	113.45	112.45
ONGC	125.90	126.52	127.68	129.47	124.73	123.57
POWERGRID	184.75	184.72	188.38	192.02	181.08	177.42
RELIANCE	1568.20	1566.23	1575.82	1583.43	1558.62	1549.03
SBIN	321.85	319.45	325.35	328.85	315.95	310.05
SUNPHARMA	434.15	434.10	437.95	441.75	430.30	426.45
TATAMOTORS	173.35	170.25	178.00	182.65	165.60	157.85
TATASTEEL	418.70	415.47	424.13	429.57	410.03	401.37
TCS	2020.90	2029.52	2075.03	2129.17	1975.38	1929.87
TECHM	756.45	758.32	764.13	771.82	750.63	744.82
TITAN	1188.00	1185.83	1194.17	1200.33	1179.67	1171.33
ULTRACEMCO	3992.10	4003.08	4022.87	4053.63	3972.32	3952.53
UPL	569.95	570.68	580.27	590.58	560.37	550.78
VEDL	144.00	142.60	146.20	148.40	140.40	136.80
WIPRO	239.45	239.80	240.90	242.35	238.35	237.25
YES BANK	45.35	45.65	48.50	51.65	42.50	39.65
ZEEL	284.30	282.75	288.30	292.30	278.75	273.20

(Source – IRIS)

Guru Call: From the expert's desk

Company	Reco Date	Reco Price (Buy on dips)	High till date	Return%
Aditya Birla Capital	22-Nov-19	95.75	114.00	19.06%
Asian Paints Ltd.	30-Mar-17	1068.10	1834.00	71.71%
Avenue Supermarts Ltd.	31-Jul-17	898.55	2010.00	123.69%
Axis Bank Ltd.	10-Apr-18	519.30	827.00	59.25%
Bajaj Finance Ltd.	11-Oct-18	2271.00	4280.00	88.46%
Bajaj Finserv Ltd	1-Nov-16	3416.80	9284.00	171.72%
Bajaj Holdings And Investment Ltd	19-May-16	1499.10	3903.00	160.36%
Bandhan Bank Ltd.	19-Dec-18	556.40	650.00	16.82%
Bharat Petroleum Corporation Ltd.	23-Oct-19	531.50	549.00	3.29%
Century Textile and Industries Ltd	25-Nov-16	326.00	491.00	50.61%
Cipla Ltd	20-Mar-17	597.30	678.50	13.59%
Colgate Palmolive	16-Sep-19	1314.00	1642.00	24.96%
Container Corporation	22-Nov-19	577.00	603.00	4.51%
Dabur India	22-Oct-19	466.00	487.00	4.51%
DLF Ltd	10-Apr-19	194.30	226.60	16.62%
Emami Limited	26-Jun-19	290.35	355.00	22.27%
Godrej Industries Ltd.	12-Feb-18	550.70	657.60	19.41%
Godrej Properties Ltd.	19-Dec-18	685.30	1119.60	63.37%
Grasim Industries Ltd.	31-May-17	1132.50	1331.00	17.53%
Havells India Ltd.	8-Dec-17	525.75	806.85	53.47%
Housing Development Finance Corp Ltd	19-Dec-17	1720.00	2357.90	37.09%
HDFC Asset Management Company Ltd.	19-Dec-18	1572.90	3844.00	144.39%
HDFC Bank Limited	10-Nov-16	639.00	1287.00	101.41%
HDFC Life Insurance Co Ltd	19-Jan-18	485.05	646.00	33.18%
Hindustan Unilever Ltd.	13-Nov-17	1290.70	2190.00	69.68%
ICICI Bank Ltd.	6-Apr-18	278.65	537.50	92.89%
ICICI Prudential Life Insurance Company Ltd.	28-Jun-18	375.80	537.00	42.90%
ICICI Lombard General Insurance	19-Sep-19	1154.90	1399.00	21.14%
Infosys Ltd.	17-Aug-17	487.60	847.00	73.71%
Kotak Mahindra Bank Ltd	10-Nov-16	822.10	1683.00	104.72%
Mahindra & Mahindra Ltd.	5-Jun-17	709.25	993.00	40.01%
Manappuram Finance Ltd.	24-Apr-18	119.20	173.00	45.13%
Mahanagar Gas	15-Nov-19	1029.00	1064.00	3.40%
Marico Ltd.	4-Apr-18	325.00	404.00	24.31%
Nestle India Ltd.	27-Sep-18	9729.40	15146.00	55.67%
Oberoi Realty Ltd.	23-Nov-17	508.60	641.70	26.17%
Phoenix Mills Limited	7-Jul-19	655.15	797.00	21.65%
Pidilite Industries Limited	4-Oct-16	681.60	1493.00	119.04%
Prestige Estates Projects Limited	6-Jun-19	286.70	363.90	26.93%
Reliance Nippon	25-Nov-18	377.00	386.40	2.49%
Rites Ltd.	19-Dec-18	226.96	324.00	42.76%
RBL Bank	22-Nov-19	334.00	391.00	17.07%
State Bank Of India	28-Aug-18	308.00	373.80	21.36%
Shipping Corporation	22-Nov-19	64.00	63.00	-1.56%
Tata Global Beverages Ltd.	29-Jun-17	149.15	328.80	120.45%
Tata Consultancy Services Ltd.	8-Jan-18	1344.60	2296.00	70.76%
Trent Ltd.	19-Dec-18	348.40	567.90	63.00%
Ultratech Cement Ltd.	19-Dec-18	4084.60	4904.00	20.06%
Voltas Ltd.	27-Mar-18	613.90	725.00	18.10%
Whirlpool Of India Ltd.	7-Dec-16	872.25	2448.00	180.65%
Zee Entertainment	22-Nov-19	345.00	362.00	4.93%

NIFTY 50 STOCKS BELOW 200SMA

SCRIP NAME	SMA 200	CLOSING (12-12-2019)
INFY	745.17	702.1
WIPRO	264.89	239.45
ZEEL	351.71	284.3
LT	1400.54	1279.7
ITC	269.95	238.55
HCLTECH	539.84	536.35
TATASTEEL	444.68	418.7
GRASIM	806.46	774.2
CIPLA	510.39	461.05
M&M	602.76	511.9
HEROMOTOCO	2604.76	2334.05
IOC	144.14	128.1
AXISBANK	731.72	722.1
ONGC	147.1	125.9
VEDL	159	144
UPL	601.32	569.95
GAIL	147.97	118.95
INDUSINDBK	1479.99	1444.15
ADANI PORTS	383.75	372.5
POWERGRID	196.45	184.75
ULTRACEMCO	4236.99	3992.1
TCS	2120.58	2020.9
JSWSTEEL	257.82	255.6
NTPC	125.58	114.45
YESBANK	124.95	45.35
COALINDIA	221.71	190.15
INFRA TEL	267.48	252.2

Weekly Expiry Most Active Nifty Call Option

Symbol	Expiry Date	Strike Price	Highest Open Interest (OI)
NIFTY	19-Dec-19	12000	1093125
NIFTY	19-Dec-19	12500	844650
NIFTY	19-Dec-19	12100	706575

Weekly Expiry Most Active Nifty Put Option

Symbol	Expiry Date	Strike Price	Highest Open Interest (OI)
NIFTY	19-Dec-19	11900	1427475
NIFTY	19-Dec-19	12000	959325
NIFTY	19-Dec-19	11850	881925

Bulk Deals (NSE)

N/A

Bulk Deals (BSE)

N/A

 Note- Executed on 12th Dec 2019. Bulk Deal Buy/Sell done by fund house is considered.

Securities in Ban For Trade Date 13-12-2019
YESBANK
Research Analyst Registration No.
INH000002764
Contact
SMS: 'Arihant' to 56677
Website
www.arihantcapital.com
mail Id
arihant.research@arihantcapital.com

**Arihant is Forbes Asia's '200 Best under a \$Billion' Company
 'Best Emerging Commodities Broker' awarded by UTV Bloomberg**

Disclaimer: This document has been prepared by Arihant Capital Markets Limited (hereinafter called as Arihant) and its subsidiaries and associated companies. This document does not constitute an offer or solicitation for the purchase and sale of any financial instrument by Arihant. Receipt and review of this document constitutes your agreement not to circulate, redistribute, retransmit or disclose to others the contents, opinions, conclusion, or information contained herein. This document has been prepared and issued on the basis of publicly available information, internally developed data and other sources believed to be reliable. Whilst meticulous care has been taken to ensure that the facts stated are accurate and opinions given are fair and reasonable, neither the analyst nor any employee of our company is in any way is responsible for its contents and nor is its accuracy or completeness guaranteed. This document is prepared for assistance only and is not intended to be and must not alone be taken as the basis for an investment decision. All recipients of this material should before dealing and or transacting in any of the products referred to in this material make their own investigation, seek appropriate professional advice. The investments discussed in this material may not be suitable for all investors. The recipient alone shall be fully responsible/are liable for any decision taken on the basis of this material. Arihant Capital Markets Ltd (including its affiliates) or its officers, directors, personnel and employees, including persons involved in the preparation or issuance of this material may; (a) from time to time, have positions in, and buy or sell or (b) be engaged in any other transaction and earn brokerage or other compensation in the financial instruments/products discussed herein or act as advisor or lender/borrower in respect of such securities/financial instruments/products or have other potential conflict of interest with respect to any recommendation and related information and opinions. The said persons may have acted upon and/or in a manner contradictory with the information contained here and may have a position or be otherwise interested in the investment referred to in this document before its publication. The user of this report assumes the entire risk of any use made of this data/report. Arihant especially states that it has no financial liability, whatsoever, to the users of this report.

Arihant Capital Markets Ltd

#1011 Solitaire Corporate Park Building No.10 1st Floor
 Andheri Ghatkopar Link Road Chakala Andheri (E) Mumbai-400093
 T. 022-42254800. Fax: 022-42254880
www.arihantcapital.com