

To join our research group on TELEGRAM, please click on the links - <https://bit.ly/37T17JR> and <https://bit.ly/2svtU7k>

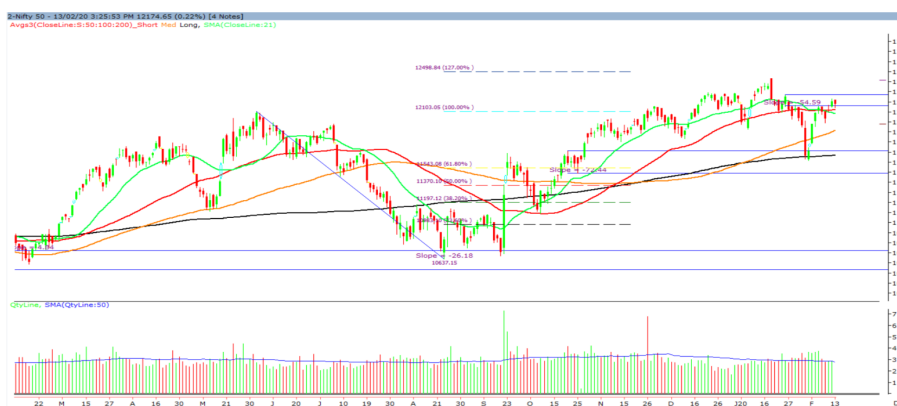
Friday, 14<sup>th</sup> February, 2020

Indian Indices	Last Price	(%) Chg
BSE	41459.79	-0.26
NSE	12174.65	-0.22
World Indices		
Dow Jones	29423.31	-0.43
Nasdaq	9711.97	-0.14
Nikkei	23686.13	-0.60
Hang Seng	27845.24	0.41
FTSE	7452.03	-1.09
Commodity	Last Price	(%) Chg
GOLD(\$/ounce)	1579.10	0.02
Silver (\$/Ounce)	17.66	0.20
Crude (\$/BBL)	56.24	-0.18
Aluminium spot (\$/mt)	1741.25	-0.66
Copper SPOT (\$/mt)	5777.50	-0.22
Lead Spot (\$/MT)	1872.00	-0.56
Natural gas \$/MMBtu	1.82	-0.38
Currency	Last Price	(%) Chg
USD-INR	71.39	-0.06
EUR-INR	77.70	-0.42
Bond		
India 10 Yr Bond yield	6.42	-0.74

52 Wk High (A group)			52 Wk Low (A group)		
Company	Close Price	52 Wk High	Company	Close Price	52 Wk Low
ADANI	250	252	NCC	48	46
ABFRL	275	281	SADBHAV	104	101
AJANTAP	1450	1483	SOBHA	377	370
BAJFIN	4795	4800	--	--	--
DRREDDY	3326	3336	--	--	--

Source: BSE

### Market Technical Outlook



Nifty opened higher traded in a narrow range with negative bias to close in green. On the daily chart we are observing that prices have managed to close above the 50-day & 21-Day SMA. We maintain our stance that prices are trading within the supply zone of 12149 to 12272. Hence, 12272 remains strong resistance. Any daily close above 12272 would propel Nifty to test 12350 – 12425 levels in couple of day.

**Broadly, we are of the opinion that one needs to adopt positive approach at current level as stock activity is likely to continue.**

### News for stocks

<b>ASHOKLEY</b>	Ashok Leyland registered a massive 92.7% YoY fall in Q3FY20 standalone profit due to weak commercial vehicle demand. Profit fell sharply to Rs 27.7 crore in the quarter ended December 2019, from Rs 380.8 crore in the same period last year.
<b>YESBANK</b>	Yes Bank said it has received non-binding expressions of interest (EoI) from at least four "prominent investors" and the capital raising effort will lead to a delay in publishing its December quarter financial results to on or before 14 March

### Foreign Institutional Investments (FII's) Activities

Name of Segment	Net Buyer/seller	Rs In Cr
Index Futures	Net Sell	-1235.28
Stock Futures	Net Buy	522.80
<b>Net Future Position</b>	<b>Net Sell</b>	<b>-712.70</b>
Index Options	Net Buy	1072.08
Stock Options	Net Buy	53.35
<b>Net Options Position</b>	<b>Net Buy</b>	<b>1125.43</b>
FII In cash Segment	Net Buy	1061.39
DII In cash Segment	Net Sell	-960.48
<b>Net Cash Position</b>	<b>Net Buy</b>	<b>100.91</b>

**Technical Levels for Nifty 50 Companies**

Company	Closing 13-02-2020	Buy/Sell Trigger	Resistance 1	Resistance 2	Support 1	Support 2
ADANI PORTS	369.1	370.27	373.53	377.97	365.83	362.57
ASIAN PAINT	1874.05	1881.35	1894.65	1915.25	1860.75	1847.45
AXIS BANK	747.8	747.85	753.4	759	742.25	736.7
BAJAJ-AUTO	3136.4	3143	3165.6	3194.8	3113.8	3091.2
BAJAJ FINSV	9717.2	9733.73	9778.47	9839.73	9672.47	9627.73
BAJFINANCE	4795.35	4776.98	4818.97	4842.58	4753.37	4711.38
BHARTIARTL	539.95	538.15	544.55	549.15	533.55	527.15
BPCL	469	471.83	475.67	482.33	465.17	461.33
BRITANNIA	3135.2	3128.02	3150.83	3166.47	3112.38	3089.57
CIPLA	443.4	444.27	448.03	452.67	439.63	435.87
COALINDIA	177.8	178.2	180.55	183.3	175.45	173.1
DRREDDY	3324.6	3286.2	3375.3	3426	3235.5	3146.4
EICHERMOT	19355.3	19338.7	19506.6	19657.9	19187.4	19019.5
GAIL	130.3	130.73	132.07	133.83	128.97	127.63
GRASIM	752.25	754.17	763.03	773.82	743.38	734.52
HCLTECH	612.45	610.15	616.25	620.05	606.35	600.25
HDFC	2403.65	2415.6	2432.2	2460.75	2387.05	2370.45
HDFCBANK	1241.4	1244.97	1256.33	1271.27	1230.03	1218.67
HEROMOTOCO	2408.95	2417.08	2433.17	2457.38	2392.87	2376.78
HINDALCO	195.25	194.88	197.37	199.48	192.77	190.28
HINDUNILVR	2283.4	2268.47	2303.88	2324.37	2247.98	2212.57
ICICIBANK	541	542.67	547.33	553.67	536.33	531.67
INDUSINDBK	1230.75	1245.92	1266.58	1302.42	1210.08	1189.42
INFRA TEL	244.85	244.87	247.68	250.52	242.03	239.22
INFY	792.25	789.48	796.77	801.28	784.97	777.68
IOC	114.75	114.92	115.58	116.42	114.08	113.42
ITC	211.9	212.18	213.17	214.43	210.92	209.93
JSWSTEEL	293.35	292.12	295.83	298.32	289.63	285.92
KOTAK BANK	1689.8	1695.6	1708.9	1728	1676.5	1663.2
LT	1292.25	1292.37	1299.73	1307.22	1284.88	1277.52
M&M	533.6	533.3	538.3	543	528.6	523.6
MARUTI	7005.05	6995.35	7065.7	7126.35	6934.7	6864.35
NESTLEIND	16412.2	16383.68	16490.02	16567.83	16305.87	16199.53
NTPC	115.15	115.65	116.6	118.05	114.2	113.25
ONGC	105.35	105.93	107.62	109.88	103.67	101.98
POWERGRID	190.55	189.8	191.9	193.25	188.45	186.35
RELIANCE	1474.15	1471.5	1480.4	1486.65	1465.25	1456.35
SBIN	327.45	326.8	331.6	335.75	322.65	317.85
SUNPHARMA	418.95	417.02	422.03	425.12	413.93	408.92
TATAMOTORS	169.5	169.98	171.87	174.23	167.62	165.73
TATASTEEL	441.25	444.1	448.85	456.45	436.5	431.75
TCS	2191.95	2186.65	2202.3	2212.65	2176.3	2160.65
TECHM	828	824.12	833.88	839.77	818.23	808.47
TITAN	1298.1	1292.03	1314.07	1330.03	1276.07	1254.03
ULTRACEMCO	4450.5	4446.22	4477.43	4504.37	4419.28	4388.07
UPL	578.75	574.85	586.8	594.85	566.8	554.85
VEDL	142.5	142.05	143.8	145.1	140.75	139
WIPRO	243.75	244.02	245.53	247.32	242.23	240.72
YESBANK	37.2	37.07	38.13	39.07	36.13	35.07
ZEEL	237.15	236.48	241.67	246.18	231.97	226.78

(Source – IRIS)

**Guru Call: From the expert's desk**

Company	Reco Date	Reco Price (Buy on dips)	High till date	Return%
Aditiya Birla Capital	22-Nov-19	95.75	115.35	20.47%
Asian Paints Ltd.	30-Mar-17	1068.1	1862.25	74.35%
Avenue Supermarts Ltd.	31-Jul-17	898.55	2010	123.69%
Axis Bank Ltd.	10-Apr-18	519.3	827.75	59.40%
Bajaj Finance Ltd.	11-Oct-18	2271	4295.75	89.16%
Bajaj Finserv Ltd	1-Nov-16	3416.8	9764.35	185.77%
Bajaj Holdings And Investment Ltd	19-May-16	1499.1	3903.95	160.42%
Bandhan Bank Ltd.	19-Dec-18	556.4	650	16.82%
Bharat Petroleum Corporation Ltd.	23-Oct-19	531.5	549	3.29%
Century Textile and Industries Ltd	25-Nov-16	326	634	94.48%
Cipla Ltd	20-Mar-17	597.3	678.45	13.59%
Colgate Palmolive	16-Sep-19	1314	1642.6	25.01%
Container Corporation	22-Nov-19	577	603	4.51%
Dabur India	22-Oct-19	466	501	7.51%
DLF Ltd	10-Apr-19	194.3	265.9	36.85%
Emami Limited	26-Jun-19	290.35	357.7	23.20%
Godrej Industries Ltd.	12-Feb-18	550.7	657.6	19.41%
Godrej Properties Ltd.	19-Dec-18	685.3	1119.6	63.37%
Grasim Industries Ltd.	31-May-17	1132.5	1331	17.53%
Havells India Ltd.	8-Dec-17	525.75	806.85	53.47%
Housing Development Finance Corp Ltd	19-Dec-17	1720	2499.9	45.34%
HDFC Asset Management Company Ltd.	19-Dec-18	1572.9	3844	144.39%
HDFC Bank Limited	10-Nov-16	639	1305.5	104.30%
HDFC Life Insurance Co Ltd	19-Jan-18	485.05	646.4	33.26%
Hindustan Unilever Ltd.	13-Nov-17	1290.7	2190	69.68%
ICICI Bank Ltd.	6-Apr-18	278.65	552.2	98.17%
ICICI Prudential Life Insurance Company Ltd.	28-Jun-18	375.8	537.3	42.97%
ICICI Lombard General Insurance	19-Sep-19	1154.9	1440.4	24.72%
Infosys Ltd.	17-Aug-17	487.6	847	73.71%
Kansai Nerolac Paints	16-Dec-19	529.85	551	3.99%
Kotak Mahindra Bank Ltd	10-Nov-16	822.1	1734.8	111.02%
Mahindra & Mahindra Ltd.	5-Jun-17	709.25	993	40.01%
Manappuram Finance Ltd.	24-Apr-18	119.2	189	58.56%
Mahanagar Gas	15-Nov-19	1029	1198	16.42%
Marico Ltd.	4-Apr-18	325	404	24.31%
Nestle India Ltd.	27-Sep-18	9729.4	15850	62.91%
Oberoi Realty Ltd.	23-Nov-17	508.6	641.7	26.17%
Phoenix Mills Limited	7-Jul-19	655.15	900	37.37%
Pidilite Industries Limited	4-Oct-16	681.6	1493.5	119.12%
Prestige Estates Projects Limited	6-Jun-19	286.7	426	48.59%
Reliance Nippon	25-Nov-18	377	386.4	2.49%
Rites Ltd.	19-Dec-18	226.96	324.8	43.11%
RBL Bank	22-Nov-19	334	391.2	17.13%
State Bank Of India	28-Aug-18	308	373.8	21.36%
Shipping Corporation	22-Nov-19	64	65.95	3.05%
Tata Chemicals Limited	24-Dec-19	682.8	762	11.60%
Tata Global Beverages Ltd.	29-Jun-17	149.15	399.45	167.82%
Tata Consultancy Services Ltd.	8-Jan-18	1344.6	2296.2	70.77%
Trent Ltd.	19-Dec-18	348.4	611.95	75.65%
Ultratech Cement Ltd.	19-Dec-18	4084.6	4904.95	20.08%
Voltas Ltd.	27-Mar-18	613.9	730.95	19.07%
Whirlpool Of India Ltd.	7-Dec-16	872.25	2510	187.76%
Zee Entertainment	22-Nov-19	345	362	4.93%

**NIFTY 50 STOCKS BELOW 200SMA**

SCRIP NAME	SMA 200	CLOSING (13-02-2020)
WIPRO	259.48	243.75
ZEEL	314.29	237.15
LT	1393.55	1292.25
ITC	256.73	211.9
GRASIM	795.05	752.25
CIPLA	493.32	443.4
M&M	576.16	533.6
HINDALCO	196.22	195.25
HEROMOTOCO	2548.8	2408.95
SUNPHARMA	421.82	418.95
IOC	137.46	114.75
ONGC	139.45	105.35
VEDL	153.34	142.5
UPL	593.7	578.75
GAIL	136.89	130.3
EICHERMOT	19607.56	19355.3
INDUSINDBK	1423.15	1230.75
ADANIPTS	386.56	369.1
POWERGRID	196.33	190.55
NTPC	122.84	115.15
YESBANK	78.95	37.2
COALINDIA	212.81	177.8
INFRADEL	252.74	244.85

**Bulk Deals (BSE)**

Deal Date	Scrip Name	Client Name	Deal Type	Quantity	Price

**Bulk Deals (NSE)**

Deal Date	Scrip Name	Client Name	Deal Type	Quantity	Price

Note- Executed on 13<sup>th</sup> Feb 2020. Bulk Deal Buy/Sell done by fund house is considered.

**Weekly Expiry Most Active Nifty Call Option**

Symbol	Expiry Date	Strike Price	Highest Open Interest (OI)
NIFTY	20-Feb-20	12100	1041225
NIFTY	20-Feb-20	12000	975450
NIFTY	20-Feb-20	11900	731025

**Weekly Expiry Most Active Nifty Put Option**

Symbol	Expiry Date	Strike Price	Highest Open Interest (OI)
NIFTY	20-Feb-20	12200	1510050
NIFTY	20-Feb-20	12400	887100
NIFTY	20-Feb-20	12300	791400

**Securities in Ban For Trade Date 14-02-2020**

YESBANK

**Research Analyst Registration No.**

INH000002764

**Contact**

SMS: 'Arihant' to 56677

**Website**
[www.arihantcapital.com](http://www.arihantcapital.com)
**mail Id**
[arihant.research@arihantcapital.com](mailto:arihant.research@arihantcapital.com)

**Arihant is Forbes Asia's '200 Best under a \$Billion' Company  
 'Best Emerging Commodities Broker' awarded by UTV Bloomberg**

**Disclaimer:** This document has been prepared by Arihant Capital Markets Limited (hereinafter called as Arihant) and its subsidiaries and associated companies. This document does not constitute an offer or solicitation for the purchase and sale of any financial instrument by Arihant. Receipt and review of this document constitutes your agreement not to circulate, redistribute, retransmit or disclose to others the contents, opinions, conclusion, or information contained herein. This document has been prepared and issued on the basis of publicly available information, internally developed data and other sources believed to be reliable. Whilst meticulous care has been taken to ensure that the facts stated are accurate and opinions given are fair and reasonable, neither the analyst nor any employee of our company is in any way is responsible for its contents and nor is its accuracy or completeness guaranteed. This document is prepared for assistance only and is not intended to be and must not alone be taken as the basis for an investment decision. All recipients of this material should before dealing and or transacting in any of the products referred to in this material make their own investigation, seek appropriate professional advice. The investments discussed in this material may not be suitable for all investors. The recipient alone shall be fully responsible/are liable for any decision taken on the basis of this material. Arihant Capital Markets Ltd (including its affiliates) or its officers, directors, personnel and employees, including persons involved in the preparation or issuance of this material may; (a) from time to time, have positions in, and buy or sell or (b) be engaged in any other transaction and earn brokerage or other compensation in the financial instruments/products discussed herein or act as advisor or lender/borrower in respect of such securities/financial instruments/products or have other potential conflict of interest with respect to any recommendation and related information and opinions. The said persons may have acted upon and/or in a manner contradictory with the information contained here and may have a position or be otherwise interested in the investment referred to in this document before its publication. The user of this report assumes the entire risk of any use made of this data/report. Arihant especially states that it has no financial liability, whatsoever, to the users of this report.

## Arihant Capital Markets Ltd

#1011 Solitaire Corporate Park Building No.10 1<sup>st</sup> Floor  
 Andheri Ghatkopar Link Road Chakala Andheri (E) Mumbai-400093  
 T. 022-42254800. Fax: 022-42254880  
[www.arihantcapital.com](http://www.arihantcapital.com)