

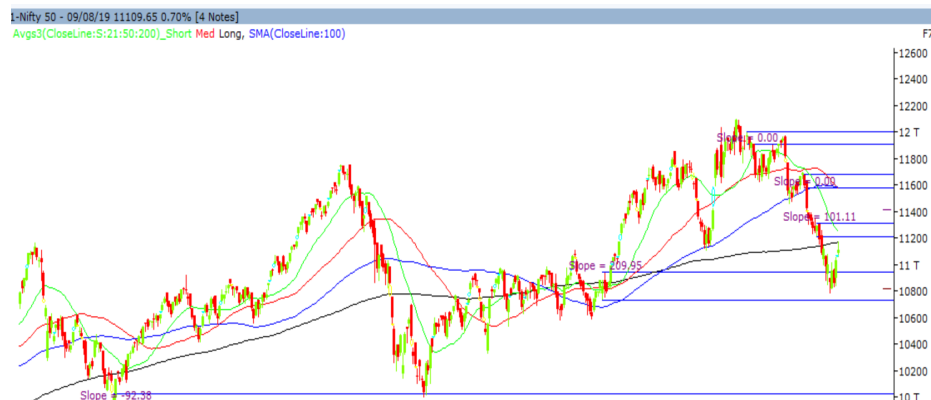
Wednesday, 14th August, 2019

Indian Indices	Last Price	(%) Chg
BSE	36958.16	-1.66
NSE	10925.85	-1.65
World Indices	Last Price	(%) Chg
Dow Jones	26279.91	1.44
Nasdaq	8016.36	1.95
Nikkei	20584.90	0.63
Hang Seng	25459.91	0.71
FTSE	7250.90	0.33
Commodity	Last Price	(%) Chg
GOLD(\$/ounce)	1512.10	-0.13
Silver (\$/Ounce)	16.92	-0.38
Crude (\$/BBL)	60.70	-0.98
Aluminium spot (\$/mt)	1783.00	-0.17
Copper SPOT (\$/mt)	5807.50	-0.62
Lead Spot (\$/MT)	2065.00	-0.21
Natural gas \$/MMBtu	2.16	0.61
Currency	Last Price	(%) Chg
USD-INR	71.43	0.85
EUR-INR	80.28	0.97
Bond	Last Price	(%) Chg
India 10 Yr Bond yield	6.51	0.37

52 Wk High (A group)			52 Wk Low (A group)		
Company	Close Price	52 Wk High	Company	Close Price	52 Wk Low
ASIANPA	1572	1593	ARVIND	50.6	49.5
BERGERP	363	364	CIPLA	475	472
GSPL	216	225	GATEWAY	99	96
PIDILITE	1343	1371	M&M	512	510
--	--	--	ONGC	128	125

Source: BSE

Market Technical Outlook



Nifty opened higher but were unable to sustain the opening gains which led the indices to close in red. On the daily chart, we are observing strong bear candle which has closed below the upward gap area of 11058 to 11062. At present, the demand zone, of 10729 to 10939 holds significance going forward. We maintain our stance that **Nifty is in a lower- top lower- bottom formation and pullback rallies are likely to attract selling pressure.**

In coming trading session if Nifty opens down with a gap in the range of 10897 to 10850 levels one can go long with a stop loss of 10800. On the upside, we may see a pullback. In such scenario Nifty may test 10983 - 11019 levels.

News for stocks under our Fundamental coverage

HDFC LIFE	Standard Life said it is seeking \$350 mn from a sale of shares in the insurance company, according to terms for the deal. Standard Life is offering the HDFC Life shares at Rs 477.8 to Rs 493.4 each according to the terms and shareholder has an option to boost the deal size by \$100 mn.
GODREJ INDUSTRIES	Board approved de-merger of wholly owned arm Ensemble Holdings & Finance from the company.

Foreign Institutional Investments (FII's) Activities

Name of Segment	Net Buyer/seller	Rs In Cr
Index Futures	Net Sell	-152.61
Stock Futures	Net Sell	-969.98
Net Future Position	Net Sell	-1122.59
Index Options	Net Buy	994.16
Stock Options	Net Buy	95.42
Net Options Position	Net Buy	1089.58
FII In cash Segment	Net Sell	-638.28
DII In cash Segment	Net Buy	201.53
Net Cash Position	Net Sell	-436.75

Technical Levels for Nifty 50 Companies

Company	Closing 13-08-2019	Buy/Sell Trigger	Resistance 1	Resistance 2	Support 1	Support 2
ADANI PORTS	361	366	374	387	353	346
ASIAN PAINT	1573	1578	1589	1604	1563	1552
AXIS BANK	649	654	664	678	640	631
BAJAJ-AUTO	2671	2685	2728	2786	2628	2585
BAJAJ FINSV	7089	7233	7401	7712	6922	6754
BAJ FINANCE	3222	3285	3361	3501	3145	3069
BHARTIARTL	352	354	362	373	344	335
BPCL	343	348	353	364	337	332
CIPLA	2512	2523	2554	2597	2480	2449
COALINDIA	476	479	484	492	470	465
DRREDDY	204	206	209	215	200	197
EICHERMOT	2556	2566	2590	2624	2532	2507
GAIL	16645	16948	17347	18050	16245	15845
GRASIM	126	126	129	132	124	121
HCLTECH	710	722	738	766	694	677
HDFC	1073	1077	1087	1102	1063	1053
HDFC BANK	2100	2134	2176	2251	2058	2017
HEROMOTOCO	2220	2232	2262	2303	2191	2161
HINDALCO	2567	2588	2630	2692	2525	2484
HINDPETRO	176	177	180	184	173	169
HINDUNILVR	1825	1822	1841	1857	1805	1786
IBULHSGFIN	573	559	612	651	520	466
ICICIBANK	410	414	418	426	406	401
INDUSINDBK	1373	1381	1410	1446	1345	1316
INFRA TEL	247	248	252	258	242	238
INFY	765	770	780	796	755	744
IOC	126	128	130	134	123	121
ITC	246	248	252	258	242	238
JSWSTEEL	220	220	224	228	216	212
KOTAK BANK	1511	1517	1529	1546	1500	1488
LT	1313	1330	1353	1393	1290	1267
M&M	512	523	535	557	500	488
MARUTI	5815	5910	6028	6241	5697	5579
NTPC	117	118	122	127	114	110
ONGC	128	129	132	137	124	121
POWERGRID	202	201	206	210	197	193
RELIANCE	1275	1268	1310	1345	1233	1191
SBIN	283	286	289	295	280	277
SUN PHARMA	439	435	449	459	425	411
TATAMOTORS	122	123	125	128	120	118
TATA STEEL	349	354	362	376	340	332
TCS	2199	2213	2232	2265	2180	2161
TECHM	639	646	656	672	629	619
TITAN	1064	1069	1083	1102	1050	1037
ULTRACEMCO	4181	4209	4257	4334	4133	4084
UPL	503	515	531	559	486	470
VEDL	140	140	143	146	137	133
WIPRO	259	260	263	267	256	254
YES BANK	74	77	81	88	70	66
ZEEL	327	330	335	342	323	319

(Source – IRIS)

Guru Call: From the expert's desk

Company	Reco Date	Reco Price (Buy on dips)	High till date	Return%
Asian Paints Ltd.	30-Mar-17	1068.1	1529	43.15%
Avenue Supermarts Ltd.	31-Jul-17	898.55	1699	89.08%
Axis Bank Ltd.	10-Apr-18	519.3	827.75	59.40%
Bajaj Finance Ltd.	11-Oct-18	2271	3693.25	62.63%
Bajaj Finserv Ltd	1-Nov-16	3416.8	8557.85	150.46%
Bajaj Holdings And Investment Ltd	19-May-16	1499.1	3800	153.49%
Bandhan Bank Ltd.	19-Dec-18	556.4	636	14.31%
Century Textile and Industries Ltd	25-Nov-16	739.3	1471	98.97%
Cipla Ltd	20-Mar-17	597.3	678.5	13.59%
DLF Ltd	10-Apr-18	194.3	202.65	4.30%
Emami Limited	26-Jun-19	290.35	326	12.28%
Godrej Industries Ltd.	12-Feb-18	550.7	657.6	19.41%
Godrej Properties Ltd.	19-Dec-18	685.3	1014.8	48.08%
Grasim Industries Ltd.	31-May-17	1132.5	1331	17.53%
Havells India Ltd.	8-Dec-17	525.75	806.85	53.47%
Housing Development Finance Corp Ltd	19-Dec-17	1720	2235	29.94%
HDFC Asset Management Company Ltd.	19-Dec-18	1572.9	2070	31.60%
HDFC Bank Limited	10-Nov-16	1251.3	2494.5	99.35%
HDFC Life Insurance Co Ltd	19-Jan-18	485.05	548.3	13.04%
Hindustan Unilever Ltd.	13-Nov-17	1290.7	1870	44.88%
ICICI Bank Ltd.	6-Apr-18	278.65	443.9	59.30%
ICICI Prudential Life Insurance Company Ltd.	28-Jun-18	375.8	428	13.89%
Infosys Ltd.	17-Aug-17	487.6	773	58.53%
Kotak Mahindra Bank Ltd	10-Nov-16	822.1	1555	89.15%
Mahindra & Mahindra Ltd.	5-Jun-17	709.25	993	40.01%
Manappuram Finance Ltd.	24-Apr-18	119.2	144.95	21.60%
Marico Ltd.	4-Apr-18	325	396.6	22.03%
Nestle India Ltd.	27-Sep-18	9729.4	11950	22.82%
Oberoi Realty Ltd.	23-Nov-17	508.6	621.7	22.24%
Phoenix Mills Limited	7-July-19	655.15	660	0.07%
Pidilite Industries Limited	4-Oct-16	681.6	1313	92.63%
Prestige Estates Projects Limited	6-Jun-18	286.7	283.5	-1.12%
Rites Ltd.	19-Dec-18	283.7	301.4	6.24%
State Bank Of India	28-Aug-18	308	365	18.51%
Tata Global Beverages Ltd.	29-Jun-17	149.15	328.8	120.45%
Tata Consultancy Services Ltd.	8-Jan-18	1344.6	2292	70.46%
Trent Ltd.	19-Dec-18	348.4	449.05	28.89%
Ultratech Cement Ltd.	19-Dec-18	4084.6	4904	20.06%
Voltas Ltd.	27-Mar-18	613.9	658.4	7.25%
Whirlpool Of India Ltd.	7-Dec-16	872.25	1955	124.13%

NIFTY 50 STOCKS BELOW 200SMA		
SCRIP NAME	SMA 200	CLOSING (13-08-2019)
WIPRO	266.64	258.50
ZEEL	408.96	327.30
LT	1390.22	1313.25
ITC	283.12	246.30
TATASTEEL	501.29	348.70
SBIN	307.48	283.35
DRREDDY	2645.78	2556.35
GRASIM	834.85	709.65
TATAMOTORS	174.95	121.95
CIPLA	539.53	475.75
M&M	676.87	512.40
HINDALCO	206.48	176.25
BPCL	353.57	343.10
HEROMOTOCO	2740.18	2566.80
SUNPHARMA	445.02	439.25
BRITANNIA	2940.75	2511.90
IOC	145.36	125.90
AXISBANK	705.77	649.45
ONGC	153.27	127.75
VEDL	178.73	139.75
UPL	573.98	503.10
GAIL	165.67	126.00
EICHERMOT	20714.61	16645.00
INDUSINDBK	1540.49	1373.45
ADANI PORTS	374.04	360.55
TECHM	737.49	639.15
JSWSTEEL	286.63	220.15
NTPC	126.90	117.15
MARUTI	6876.67	5815.45
YESBANK	177.54	73.60
BAJAJ-AUTO	2803.93	2670.55
COALINDIA	240.46	203.75
INFRA TEL	278.48	246.65
IBULHSGFIN	721.50	573.10

Securities in Ban For Trade Date 14-08-2019

DHFL.

Bulk Deals (NSE)

N/A

Bulk Deals (BSE)

Deal Date	Scrip Name	Client Name	Deal Type	Quantity	Price
13-Aug-19	GULFOILLUB	SMALLCAP WORLD FUND INC	S	264882	815.88

 Note- Executed on 13th Aug 2019. Bulk Deal Buy/Sell done by fund house is considered.

Research Analyst Registration No.

INH000002764

Contact

SMS: 'Arihant' to 56677

Website

www.arihantcapital.com

mail Id

research@arihantcapital.com

**Arihant is Forbes Asia's '200 Best under a \$Billion' Company
'Best Emerging Commodities Broker' awarded by UTV Bloomberg**

Disclaimer: This document has been prepared by Arihant Capital Markets Limited (hereinafter called as Arihant) and its subsidiaries and associated companies. This document does not constitute an offer or solicitation for the purchase and sale of any financial instrument by Arihant. Receipt and review of this document constitutes your agreement not to circulate, redistribute, retransmit or disclose to others the contents, opinions, conclusion, or information contained herein. This document has been prepared and issued on the basis of publicly available information, internally developed data and other sources believed to be reliable. Whilst meticulous care has been taken to ensure that the facts stated are accurate and opinions given are fair and reasonable, neither the analyst nor any employee of our company is in any way is responsible for its contents and nor is its accuracy or completeness guaranteed. This document is prepared for assistance only and is not intended to be and must not alone be taken as the basis for an investment decision. All recipients of this material should before dealing and or transacting in any of the products referred to in this material make their own investigation, seek appropriate professional advice. The investments discussed in this material may not be suitable for all investors. The recipient alone shall be fully responsible/are liable for any decision taken on the basis of this material. Arihant Capital Markets Ltd (including its affiliates) or its officers, directors, personnel and employees, including persons involved in the preparation or issuance of this material may; (a) from time to time, have positions in, and buy or sell or (b) be engaged in any other transaction and earn brokerage or other compensation in the financial instruments/products discussed herein or act as advisor or lender/borrower in respect of such securities/financial instruments/products or have other potential conflict of interest with respect to any recommendation and related information and opinions. The said persons may have acted upon and/or in a manner contradictory with the information contained here and may have a position or be otherwise interested in the investment referred to in this document before its publication. The user of this report assumes the entire risk of any use made of this data/report. Arihant especially states that it has no financial liability, whatsoever, to the users of this report.

Arihant Capital Markets Ltd

#1011 Solitaire Corporate Park Building No.10 1st Floor
Andheri Ghatkopar Link Road Chakala Andheri (E) Mumbai-400093
T. 022-42254800. Fax: 022-42254880
www.arihantcapital.com