

To join our research group on TELEGRAM, please click on the links - <https://bit.ly/2CkisAK> and <https://bit.ly/3fKXKHK>

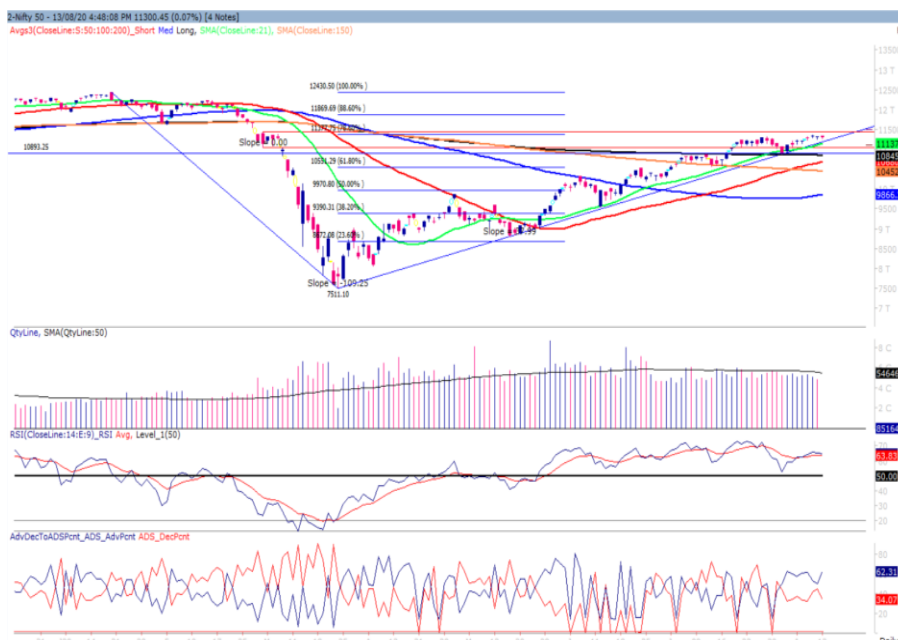
Friday, 14<sup>th</sup> Aug, 2020

Indian Indices	Last Price	(%) Chg
NSE	11300.45	-0.07
BSE	38310.49	-0.15
World Indices	Last Price	(%) Chg
Dow Jones	27896.72	-0.29
Nasdaq	11042.50	0.27
Nikkei	23275.75	0.11
Hang Seng	25194.20	-0.14
FTSE	6185.62	-1.50
Commodity	Last Price	(%) Chg
GOLD(\$/ounce)	1963.30	-0.36
Silver (\$/Ounce)	27.58	-0.50
Crude (\$/BBL)	45.01	0.11
Aluminium spot (\$/mt)	1766.50	0.23
Copper SPOT (\$/mt)	6309.00	0.67
Lead Spot (\$/MT)	1954.25	0.17
Natural gas \$/MMBtu	2.19	0.18
Currency	Last Price	(%) Chg
USD-INR	74.91	0.01
EUR-INR	88.67	0.57
Bond	Last Price	(%) Chg
India 10 Yr Bond yield	5.89	0.20

52 Wk High (A group)			52 Wk Low (A group)		
Company	Close Price	52 Wk High	Company	Close Price	52 Wk Low
BALKRISHN	1391	1396	--	--	--
HCL	725	728	--	--	--
GUJGAS	325	331	--	--	--
TATA CON	541	542	--	--	--
JP ASSO	4.5	4.6	--	--	--

Source: BSE

### Market Technical Outlook



Nifty opened higher traded in a narrow range throughout the day and finally managed to close marginally in red. We still maintain our stance that prices are trading within the supply zone of 11036 to 11433 (shown in red in the above graph). Further, we are observing series of “Doji” candlestick patterns. This suggests that markets are cautiously positive at current levels. In coming trading session if prices trade above 11370 levels then it is likely to test 11400 - 11480 levels. On the downside, 11200 - 11100 levels may act as support for the day.

**We still maintain our stance that Nifty is trading within the supply zone of 11036– 11433. Hence cautiously positive approach should be adopted at current level as stock specific activity is likely to continue.**

### Foreign Institutional Investments (FII's) Activities

Name of Segment	Net Buyer/seller	Rs In Cr
Index Futures	Net Buy	766.88
Stock Futures	Net Sell	-528.98
<b>Net Future Position</b>	<b>Net Buy</b>	<b>237.9</b>
Index Options	Net Buy	1430.04
Stock Options	Net Sell	-82.66
<b>Net Options Position</b>	<b>Net Buy</b>	<b>1347.38</b>
FII In cash Segment	Net Buy	416.28
DII In cash Segment	Net Sell	-763.54
<b>Net Cash Position</b>	<b>Net Sell</b>	<b>-347.26</b>

**Guru Call: From the expert's desk**

Company	Reco Date	Reco Price (Buy on dips)	High till date	Return%
Aditiya Birla Capital	22-Nov-19	95.75	115.35	20.47%
Ajanta Pharma	04-Aug-20	1661.05	1717	3.26%
Akzo Nobel	13-Jul-20	1853	1895	2.22%
Alkem	08-Jul-20	2427	2583	6.04%
Asian Paints Ltd.	30-Mar-17	1068.10	1916.70	79.45%
Avenue Supermarts Ltd.	31-Jul-17	898.55	2560.00	184.90%
Axis Bank Ltd.	10-Apr-18	519.30	827.75	59.40%
Bajaj Finance Ltd.	11-Oct-18	2271.00	4923.40	116.79%
Bajaj Finserv Ltd	1-Nov-16	3416.80	9950.00	191.21%
Bajaj Holdings And Investment Ltd	19-May-16	1499.10	3950.00	163.49%
Bajaj-Auto	12-Jun-20	2782.00	3149.00	11.65%
Bandhan Bank Ltd.	19-Dec-18	556.40	650.00	16.82%
BEL	13-Aug-20	110.00	115.00	8.69%
Bharat Petroleum Corporation Ltd.	23-Oct-19	531.50	549.00	3.29%
Bhartiartel	04-May-20	532.00	612.00	13.07%
Britannia	12-June-20	3366.00	4010.00	16.05%
Cadila	03-Apr-20	274.00	384.00	28.65%
Century Textile and Industries Ltd	25-Nov-16	326.00	656.90	101.50%
Cipla Ltd	20-Mar-17	597.30	678.45	13.59%
Colgate Palmolive	16-Sep-19	1314.00	1642.60	25.01%
Crompto Greaves Consumer	11-Jun-20	225.00	254.00	11.42%
Dabur India	22-Oct-19	466.00	525.00	12.66%
Divislab	04-Aug-20	2641.00	2716.60	2.78%
DLF Ltd	10-Apr-19	194.30	265.90	36.85%
Dr Reddy	04-Aug-20	4530.00	4664.90	2.89%
Emami Limited	26-Jun-19	290.35	357.70	23.20%
Fortis	14-Jul-20	127.00	139.00	8.63%
Galaxy Surface	01-Jul-20	1557.00	1665.00	6.49%
Goderj CP	16-Jun-20	634.00	721.00	12.07%
Godrej Industries Ltd.	12-Feb-18	550.70	657.60	19.41%
HDFC Asset Management Company Ltd.	19-Dec-18	1572.90	3844.00	144.39%
HDFC Bank Limited	10-Nov-16	639.00	1305.50	104.30%
HDFC Life Insurance Co Ltd	19-Jan-18	485.05	646.40	33.26%
Hindustan Unilever Ltd.	13-Nov-17	1290.70	2308.20	78.83%
Housing Development Finance Corp Ltd	19-Dec-17	1720.00	2499.90	45.34%
ICICI Bank Ltd.	6-Apr-18	278.65	552.20	98.17%
ICICI Lombard General Insurance	19-Sep-19	1154.90	1440.40	24.72%
ICICI Prudential Life Insurance Company Ltd.	28-Jun-18	375.80	537.30	42.97%
Indusindbnk	08-Jun-20	451.00	577.00	21.84%
Infosys Ltd.	17-Aug-17	487.60	847.00	73.71%
Ipca Lab	11-Aug-20	2099.00	2156.00	2.66%
Jk Cement	19-Jun-20	1378.00	1568.00	12.12%
JK Lakshmi Cement	03-Jul-20	276.00	305.00	9.1%
Jyoti lab	05-Aug-20	132.90	143.90	7.64%
Kansai Nerolac Paints	16-Dec-19	529.85	551.00	3.99%
Kotak Mahindra Bank Ltd	10-Nov-16	822.10	1740.00	111.65%
Mahanagar Gas	15-Nov-19	1029.00	1246.20	21.11%
Mahindra & Mahindra Ltd.	5-Jun-17	709.25	993.00	40.01%
Manappuram Finance Ltd.	24-Apr-18	119.20	194.80	63.42%
Marico Ltd.	4-Apr-18	325.00	404.00	24.31%
Nam-India	25-Nov-18	377.00	452.90	20.13%
Nestle India Ltd.	27-Sep-18	9729.40	16835.15	73.03%

**Guru Call: From the expert's desk**

Company	Reco Date	Reco Price (Buy on dips)	High till date	Return%
NMDC	05-Aug-20	84.90	88.05	3.58%
Oberoi Realty Ltd.	23-Nov-17	508.60	641.70	26.17%
Pfizer	22-Jul-20	4150.00	4450.00	6.74%
Phoenix Mills Limited	7-Jul-19	655.15	979.00	49.43%
Pidilite Industries Limited	4-Oct-16	681.60	1661.00	143.69%
Reliance	22-Apr-20	1351.00	2198.00	38.54%
Rites Ltd.	19-Dec-18	226.96	331.00	45.84%
SBI Card	16-Jul-20	719.00	798.00	9.90%
SBI Life	20-May-20	715.00	895.00	20.11%
Sun Pharma	07-Aug-20	525.00	550.00	9.09%
Tata Chemicals Limited	24-Dec-19	296.89	339.70	14.42%
Tata Consultancy Services Ltd.	8-Jan-18	1344.60	2296.20	70.77%
Tata Consumer	29-Jun-17	149.15	408.00	173.55%
Torent Pharma	04-Aug-20	2727.95	2881.50	5.33%
Trent Ltd.	19-Dec-18	348.40	794.00	127.90%
Ultratech Cement Ltd.	19-Dec-18	4084.60	4904.95	20.08%
Voltas Ltd.	27-Mar-18	613.90	741.00	20.70%
Whirlpool Of India Ltd.	7-Dec-16	872.25	2555.00	192.92%
Zee Entertainment	22-Nov-19	345.00	362.00	4.93%

**NIFTY 50 STOCKS BELOW 200SMA**

SCRIP NAME	SMA 200	CLOSING (13-08-2020)
ZEEL	212.54	162.3
LT	1094.29	990.7
ITC	207.06	201.45
SBIN	248.3	201.9
GRASIM	654.43	631.85
HDFC	2018.85	1804.85
ICICIBANK	428.43	368.05
HDFCBANK	1105.54	1059.05
IOC	102.63	86.85
AXISBANK	565.02	448.1
ONGC	97.46	78.6
GAIL	106.05	97.4
INDUSINDBK	886.83	518.75
BAJFINANCE	3420.65	3419.65
KOTAKBANK	1457.84	1336.25
NTPC	102.24	87.25
BAJAJFINSV	7250.58	6350
COALINDIA	163.08	128.95
INFRATEL	214.5	201.4
--	--	--
--	--	--
--	--	--
--	--	--
--	--	--
--	--	--
--	--	--
--	--	--
--	--	--
--	--	--
--	--	--
--	--	--
--	--	--
--	--	--
--	--	--
--	--	--
--	--	--

**Weekly Expiry Most Active Nifty Call Option**

Symbol	Expiry Date	Strike Price	Highest Open Interest (OI)
NIFTY	20-Aug-2020	11200	1,375,125
NIFTY	20-Aug-2020	11500	1,203,375
NIFTY	20-Aug-2020	11400	1,178,925

**Weekly Expiry Most Active Nifty Put Option**

Symbol	Expiry Date	Strike Price	Highest Open Interest (OI)
NIFTY	20-Aug-2020	11300	1,057,950
NIFTY	20-Aug-2020	11000	948,450
NIFTY	20-Aug-2020	11100	732,825

**Securities in Ban For Trade Date 14-08-2020**

ASHOKLEY, AUROPHARMA, BATAINDIA, BHEL, CANBK, CENTURYTEX, GLENMARK, IBULHSGFIN, IDEA, MUTHOOTFIN, SAIL, VEDL

**Bulk Deals (BSE)**

N/A

**Bulk Deals (NSE)**

Deal Date	Scrip Name	Client Name	Deal Type	Quantity	Price
13-Aug-20	SATIN-RE	TRISHASHNA HOLDINGS & INVESTMENTS PRIVATE LIMITED	BUY	143020	18.62
13-Aug-20	SATIN-RE	PANKAJ JASRAJ SAHUJI	BUY	139000	18.65
13-Aug-20	SATIN-RE	SBI EMERGING ASIA FINANCIAL SECTOR FUND PTE LTD	SELL	957966	18.65
13-Aug-20	SPENCER-RE	MFS INTERNATIONAL NEW DISCOVERY FUND	SELL	96463	18.40
13-Aug-20	STEL	ROYAL CALCUTTA GOLF CLUB	SELL	269247	60.00

Note- Executed on 13<sup>th</sup> Aug 2020. Bulk Deal Buy/Sell done by fund house is considered.

## Research Analyst Registration No.

INH000002764

## Contact

SMS: 'Arihant' to 56677

## Website

[www.arihantcapital.com](http://www.arihantcapital.com)

## mail Id

[arihant.research@arihantcapital.com](mailto:arihant.research@arihantcapital.com)

**Arihant is Forbes Asia's '200 Best under a \$Billion' Company  
'Best Emerging Commodities Broker' awarded by UTV Bloomberg**

**Disclaimer:** This document has been prepared by Arihant Capital Markets Limited (hereinafter called as Arihant) and its subsidiaries and associated companies. This document does not constitute an offer or solicitation for the purchase and sale of any financial instrument by Arihant. Receipt and review of this document constitutes your agreement not to circulate, redistribute, retransmit or disclose to others the contents, opinions, conclusion, or information contained herein. This document has been prepared and issued on the basis of publicly available information, internally developed data and other sources believed to be reliable. Whilst meticulous care has been taken to ensure that the facts stated are accurate and opinions given are fair and reasonable, neither the analyst nor any employee of our company is in any way is responsible for its contents and nor is its accuracy or completeness guaranteed. This document is prepared for assistance only and is not intended to be and must not alone be taken as the basis for an investment decision. All recipients of this material should before dealing and or transacting in any of the products referred to in this material make their own investigation, seek appropriate professional advice. The investments discussed in this material may not be suitable for all investors. The recipient alone shall be fully responsible/are liable for any decision taken on the basis of this material. Arihant Capital Markets Ltd (including its affiliates) or its officers, directors, personnel and employees, including persons involved in the preparation or issuance of this material may; (a) from time to time, have positions in, and buy or sell or (b) be engaged in any other transaction and earn brokerage or other compensation in the financial instruments/products discussed herein or act as advisor or lender/borrower in respect of such securities/financial instruments/products or have other potential conflict of interest with respect to any recommendation and related information and opinions. The said persons may have acted upon and/or in a manner contradictory with the information contained here and may have a position or be otherwise interested in the investment referred to in this document before its publication. The user of this report assumes the entire risk of any use made of this data/report. Arihant especially states that it has no financial liability, whatsoever, to the users of this report.

## Arihant Capital Markets Ltd

#1011 Solitaire Corporate Park Building No.10 1<sup>st</sup> Floor  
Andheri Ghatkopar Link Road Chakala Andheri (E) Mumbai-400093  
T. 022-42254800. Fax: 022-42254880  
[www.arihantcapital.com](http://www.arihantcapital.com)