

To join our research group on TELEGRAM, please click on the links - <https://bit.ly/2Rt4NyS> and <https://bit.ly/3cigvDn>

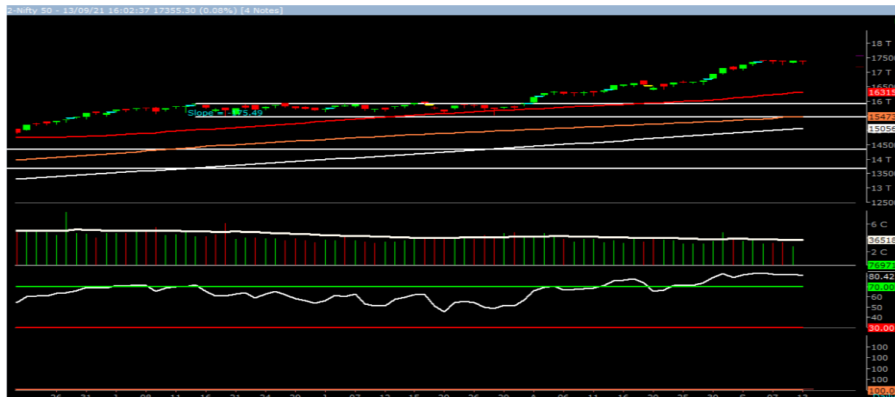
Tuesday, 14<sup>th</sup> Sep, 2021

Indian Indices	Last Price	(%) Chg
NSE	17355.30	-0.08
BSE	58177.76	-0.22
World Indices	Last Price	(%) Chg
Dow Jones	34869.63	0.76
Nasdaq	15105.58	-0.07
Nikkei	30732.99	0.93
Hang Seng	25686.97	-0.48
FTSE	7068.43	0.56
Commodity	Last Price	(%) Chg
GOLD(\$/ounce)	1792.90	-0.10
Silver (\$/Ounce)	23.74	-0.24
Crude (\$/BBL)	73.83	0.44
Aluminium spot (\$/mt)	2900.00	0.35
Copper SPOT (\$/mt)	9547.25	0.14
Lead Spot (\$/MT)	2277.75	-0.37
Natural gas \$/MMBtu	5.20	-0.65
Currency	Last Price	(%) Chg
USD-INR	73.72	0.28
EUR-INR	86.80	-0.06
Bond		
India 10 Yr Bond yield	6.19	0.24

52 Wk High (A group)			52 Wk Low (A group)		
Company	Close Price	52 Wk High	Company	Close Price	52 Wk Low
ADANITR	1870	1875	--	--	--
BPCL	498	499	--	--	--
BHARTI	695	697	--	--	--
CARBORU	918	948	--	--	--
CONCOR	740	754	--	--	--

Source: BSE

### Market Technical Outlook



Nifty opened lower traded with choppiness and finally managed to close marginally in red. On the daily chart we are witnessing five consecutive narrow range body formations which suggest that a consolidation or minor pullback from current level cannot be ruled out. In coming trading session if Nifty for first hour trades above 17380 level then it may test 17460 – 17580 levels. On the downside, 17250 – 17160 levels may act as support for the day.

**We still continue to maintain our stance that stock specific activity is likely to continue.**

### Foreign Institutional Investments (FII's) Activities

Name of Segment	Net Buyer/seller	Rs In Cr
Index Futures	Net Sell	-646.57
Stock Futures	Net Sell	-1159.82
<b>Net Future Position</b>	<b>Net Sell</b>	<b>-1806.39</b>
Index Options	Net Sell	-556.76
Stock Options	Net Sell	-27.72
<b>Net Options Position</b>	<b>Net Buy</b>	<b>-584.48</b>
FII In cash Segment	Net Buy	1419.31
DII In cash Segment	Net Sell	-559.59
<b>Net Cash Position</b>	<b>Net Buy</b>	<b>859.72</b>

Guru Call: From the expert's desk				
Company	Reco Date	Reco Price (Buy on dips)	High till date	Return%
Accelya Solutions India Ltd	10-Jun-21	1203.90	1539.40	27.87%
Aditya Birla Capital Ltd	13-Aug-21	206.60	210.95	2.11%
Aditya Birla Fashion and Retail Ltd	08-Feb-21	164.40	231.65	40.91%
Alkem	08-Jul-20	2427.00	3558.90	46.64%
Apcotex Industries Limited	13-Aug-21	342.90	350.05	2.09%
Asian Paints Ltd.	30-Mar-17	1068.10	3179.50	197.68%
Astec LifeSciences Limited	09-Jul-21	1360.70	1487.00	9.28%
Avenue Supermarts Ltd.	31-Jul-17	898.55	3448.95	283.84%
Axis Bank Ltd.	10-Apr-18	519.30	827.75	59.40%
Bajaj Finserv Ltd	1-Nov-16	3416.80	13110.00	283.69%
Bajaj Holdings And Investment Ltd	19-May-16	1499.10	4060.00	170.83%
Birla Corporation Limited	28-Jun-21	1240.00	1450.80	17.00%
Britannia	12-June-20	3366.00	4010.00	19.13%
Cadila	03-Apr-20	274.00	673.70	145.88%
CAMS	08-Oct-20	1334.90	3740.65	180.22%
CDSL	17-Sep-20	485.90	1579.00	224.96%
Century Textile and Industries Ltd	25-Nov-16	750.40	1471.20	96.06%
CESC Ltd	08-Jun-21	758.20	870.90	14.86%
CG Power and Industrial Solutions Ltd	10-Feb-21	45.25	91.95	103.20%
Chola finance	25-Sep-20	238.70	600.95	151.76%
Chola Holding	23-Sep-20	391.80	711.00	81.47%
Cipla Ltd	20-Mar-17	597.30	997.00	66.92%
Colgate Palmolive	16-Sep-19	1314.00	1794.85	36.59%
Dabur India	22-Oct-19	466.00	605.00	29.83%
DFM Foods Ltd	03-Feb-21	409.05	453.80	10.94%
DLF Ltd	10-Apr-19	194.30	338.80	74.37%
Dr Reddy	04-Aug-20	4530.00	5614.60	23.94%
Emami Limited	26-Jun-19	290.35	578.50	99.24%
Finolex Cables Ltd	08-Feb-21	368.80	557.70	51.22%
Firstsource Solutions Ltd	13-Aug-21	201.10	209.35	4.10%
Fortis	14-Jul-20	127.00	253.90	99.92%
Gati Ltd	13-Aug-21	148.90	154.20	3.56%
Gillette India Limited	11-Jun-21	5847.00	6249.00	6.88%
Glaxosmithkline Pharmaceuticals Ltd	27-Aug-20	1455.75	1807.50	24.16%
Godrej Consumer Products Limited	16-Jun-20	634.00	980.70	54.68%
HDFC Asset Management Company Ltd.	19-Dec-18	1572.90	3844.00	144.39%
HDFC Bank Limited	10-Nov-16	639.00	1641.00	156.81%
HDFC Life Insurance Co Ltd	19-Jan-18	485.05	746.00	53.80%
Hero Motocorp Ltd	29-Sep-20	3174.95	3629.05	14.30%
Hindustan Unilever Ltd.	13-Nov-17	1290.70	2614.30	102.55%
Housing Development Finance Corp Ltd	19-Dec-17	1720.00	2896.00	68.37%
ICICI Bank Ltd.	06-Apr-18	278.65	679.40	143.82%
ICICI Lombard General Insurance	19-Sep-19	1154.90	1626.45	40.83%
ICICI Prudential Life Insurance Company Ltd.	28-Jun-18	375.80	660.20	75.68%
ICICI Securities Ltd	24-Sep-20	466.65	802.00	71.86%
Indusindbnk	08-Jun-20	451.00	1119.50	148.23%
Infosys Ltd.	17-Aug-17	487.60	1596.85	227.49%
INOX Leisure Ltd	13-Aug-21	327.80	332.70	1.49%
Ion Exchange (India) Ltd	01-June-21	1464.95	2947.00	101.17%
Jubilant Ingrevia Ltd	22-Jul-21	623.00	640.00	2.73%
Kotak Mahindra Bank Ltd	10-Nov-16	822.10	2049.00	149.24%
L&T Finance Holdings Ltd	03-Dec-20	84.05	113.40	34.92%



**NIFTY 50 STOCKS BELOW 200SMA**

SCRIP NAME	SMA 200	CLOSING (13-09-2021)
DRREDDY	4966	4931
M&M	788	745
HEROMOTOCO	3028	2789
MARUTI	7200	6873
BAJAJ-AUTO	3803	3699
--	--	--
--	--	--
--	--	--
--	--	--
--	--	--
--	--	--
--	--	--

**Weekly Expiry Most Active Nifty Call Option**

Symbol	Expiry Date	Strike Price	Highest Open Interest (Contracts)
NIFTY	16-Sep-2021	17400	87,692
NIFTY	16-Sep-2021	18000	86,399
NIFTY	16-Sep-2021	17500	67,778

**Weekly Expiry Most Active Nifty Put Option**

Symbol	Expiry Date	Strike Price	Highest Open Interest (Contracts)
NIFTY	16-Sep-2021	16500	82,447
NIFTY	16-Sep-2021	17300	82,302
NIFTY	16-Sep-2021	17200	70,811

**Securities in Ban For Trade Date 14-09-2021**

CANBK,EXIDEIND,IBULHSGFIN, LICHSGFIN, NATIONALUM.

**IPO LISTING TODAY**

Company Name: Ami Organics Limited, BSE Code: 543349, NSE Symbol: AMIORG, Issue Price: Rs 610 per share, Series: EQ

Company Name: Vijaya Diagnostic Centre Limited , BSE Code: 543350, NSE Symbol: VIJAYA, Issue Price: Rs 531 per share, Series: EQ

**Bulk Deals (NSE)**

Deal Date	Scrp Name	Client Name	Deal Type	Quantity	Price
13-Sep-21	DISHTV	THE HINDUSTAN TIIMES LTD	BUY	20000000	19.22
13-Sep-21	DYNAMATECH	SHRI GAUTAM GHANDHAR ADVISORS LLP	BUY	34260	3,177.40
13-Sep-21	WALCHANNAG	VISTRA ITCL INDIA LIMITED	SELL	193431	62.31

**Bulk Deals (BSE)**

N.A

Note- Executed on 13<sup>th</sup> Sep 2021. Bulk Deal Buy/Sell done by fund house is considered

Research Analyst Registration No.

INH000002764

Contact

SMS: 'Arihant' to 56677

Website

[www.arihantcapital.com](http://www.arihantcapital.com)

mail Id

[arihant.research@arihantcapital.com](mailto:arihant.research@arihantcapital.com)

**Arihant is Forbes Asia's '200 Best under a \$Billion' Company  
'Best Emerging Commodities Broker' awarded by UTV Bloomberg**

**Disclaimer:** This document has been prepared by Arihant Capital Markets Limited (hereinafter called as Arihant) and its subsidiaries and associated companies. This document does not constitute an offer or solicitation for the purchase and sale of any financial instrument by Arihant. Receipt and review of this document constitutes your agreement not to circulate, redistribute, retransmit or disclose to others the contents, opinions, conclusion, or information contained herein. This document has been prepared and issued on the basis of publicly available information, internally developed data and other sources believed to be reliable. Whilst meticulous care has been taken to ensure that the facts stated are accurate and opinions given are fair and reasonable, neither the analyst nor any employee of our company is in any way is responsible for its contents and nor is its accuracy or completeness guaranteed. This document is prepared for assistance only and is not intended to be and must not alone be taken as the basis for an investment decision. All recipients of this material should before dealing and or transacting in any of the products referred to in this material make their own investigation, seek appropriate professional advice. The investments discussed in this material may not be suitable for all investors. The recipient alone shall be fully responsible/are liable for any decision taken on the basis of this material. Arihant Capital Markets Ltd (including its affiliates) or its officers, directors, personnel and employees, including persons involved in the preparation or issuance of this material may; (a) from time to time, have positions in, and buy or sell or (b) be engaged in any other transaction and earn brokerage or other compensation in the financial instruments/products discussed herein or act as advisor or lender/borrower in respect of such securities/financial instruments/products or have other potential conflict of interest with respect to any recommendation and related information and opinions. The said persons may have acted upon and/or in a manner contradictory with the information contained here and may have a position or be otherwise interested in the investment referred to in this document before its publication. The user of this report assumes the entire risk of any use made of this data/report. Arihant especially states that it has no financial liability, whatsoever, to the users of this report.

### Arihant Capital Markets Ltd

#1011 Solitaire Corporate Park Building No.10 1<sup>st</sup> Floor  
Andheri Ghatkopar Link Road Chakala Andheri (E) Mumbai-400093  
T. 022-42254800. Fax: 022-42254880  
[www.arihantcapital.com](http://www.arihantcapital.com)