

To join our research group on TELEGRAM, please click on the links - <https://bit.ly/2Rt4NyS> and <https://bit.ly/3ciqvDn>

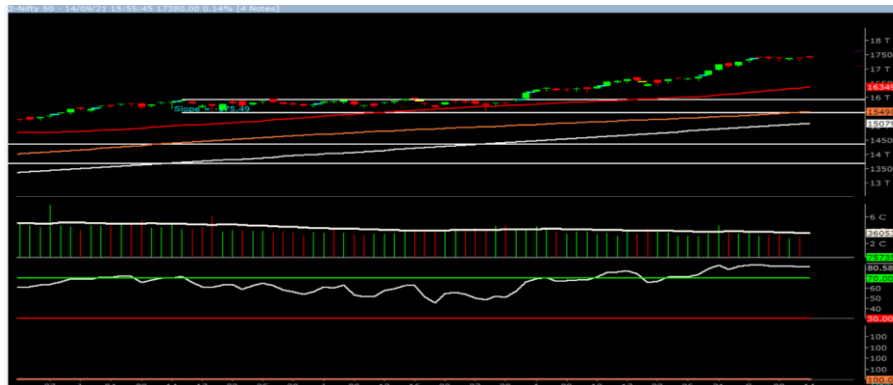
Wednesday, 15th Sep, 2021

Indian Indices	Last Price	(%) Chg
NSE	17380.00	0.14
BSE	58247.09	0.12
World Indices	Last Price	(%) Chg
Dow Jones	34577.57	-0.84
Nasdaq	15037.76	-0.45
Nikkei	30510.05	-0.52
Hang Seng	25311.85	-0.74
FTSE	7034.06	-0.49
Commodity	Last Price	(%) Chg
GOLD(\$/ounce)	1804.50	-0.14
Silver (\$/Ounce)	23.82	-0.33
Crude (\$/BBL)	73.94	0.46
Aluminium spot (\$/mt)	2854.75	0.94
Copper SPOT (\$/mt)	9464.00	0.34
Lead Spot (\$/MT)	2249.00	-0.65
Natural gas \$/MMBtu	5.30	0.74
Currency	Last Price	(%) Chg
USD-INR	73.69	0.18
EUR-INR	87.02	0.18
Bond		
India 10 Yr Bond yield	6.19	0.11

52 Wk High (A group)			52 Wk Low (A group)		
Company	Close Price	52 Wk High	Company	Close Price	52 Wk Low
ADANITR	1942	1960	--	--	--
ATUL	9897	9898	--	--	--
BAJAJELE	1381	1389	--	--	--
BEL	202	204	--	--	--
BHARTI	694	699	--	--	--

Source: BSE

Market Technical Outlook



Nifty opened higher witnessed minor profit booking during the day but close in green. lower traded with choppiness and finally managed to close marginally in red. On the daily chart we are witnessing consecutive narrow range body formations which suggests that a consolidation or minor pullback from current level cannot be ruled out. In coming trading session if Nifty for first hour trades above 17438 level then it may test 17480 – 17590 levels. On the downside, 17280 – 17170 levels may act as support for the day.

We still continue to maintain our stance that stock specific activity is likely to continue.

Foreign Institutional Investments (FIIs) Activities

Name of Segment	Net Buyer/seller	Rs In Cr
Index Futures	Net Sell	-197.00
Stock Futures	Net Sell	-196.16
Net Future Position	Net Sell	-393.16
Index Options	Net Sell	-1314.74
Stock Options	Net Sell	-102.29
Net Options Position	Net Sell	-1417.03
FII In cash Segment	Net Buy	1649.60
DII In cash Segment	Net Sell	-310.31
Net Cash Position	Net Buy	1339.29

Guru Call: From the expert's desk

Company	Reco Date	Reco Price (Buy on dips)	High till date	Return%
Accelya Solutions India Ltd	10-Jun-21	1203.90	1539.40	27.87%
Aditya Birla Capital Ltd	13-Aug-21	206.60	210.95	2.11%
Aditya Birla Fashion and Retail Ltd	08-Feb-21	164.40	231.65	40.91%
Alkem	08-Jul-20	2427.00	3558.90	46.64%
Apcotex Industries Limited	13-Aug-21	342.90	350.05	2.09%
Asian Paints Ltd.	30-Mar-17	1068.10	3179.50	197.68%
Astec LifeSciences Limited	09-Jul-21	1360.70	1487.00	9.28%
Avenue Supermarts Ltd.	31-Jul-17	898.55	3448.95	283.84%
Axis Bank Ltd.	10-Apr-18	519.30	827.75	59.40%
Bajaj Finserv Ltd	1-Nov-16	3416.80	13110.00	283.69%
Bajaj Holdings And Investment Ltd	19-May-16	1499.10	4060.00	170.83%
Birla Corporation Limited	28-Jun-21	1240.00	1450.80	17.00%
Britannia	12-June-20	3366.00	4010.00	19.13%
Cadila	03-Apr-20	274.00	673.70	145.88%
CAMS	08-Oct-20	1334.90	3740.65	180.22%
CDSL	17-Sep-20	485.90	1579.00	224.96%
Century Textile and Industries Ltd	25-Nov-16	750.40	1471.20	96.06%
CESC Ltd	08-Jun-21	758.20	870.90	14.86%
CG Power and Industrial Solutions Ltd	10-Feb-21	45.25	91.95	103.20%
Chola finance	25-Sep-20	238.70	600.95	151.76%
Chola Holding	23-Sep-20	391.80	711.00	81.47%
Cipla Ltd	20-Mar-17	597.30	997.00	66.92%
Colgate Palmolive	16-Sep-19	1314.00	1794.85	36.59%
Dabur India	22-Oct-19	466.00	605.00	29.83%
DFM Foods Ltd	03-Feb-21	409.05	453.80	10.94%
DLF Ltd	10-Apr-19	194.30	338.80	74.37%
Dr Reddy	04-Aug-20	4530.00	5614.60	23.94%
Emami Limited	26-Jun-19	290.35	578.50	99.24%
Finolex Cables Ltd	08-Feb-21	368.80	557.70	51.22%
Firstsource Solutions Ltd	13-Aug-21	201.10	209.35	4.10%
Fortis	14-Jul-20	127.00	253.90	99.92%
Gati Ltd	13-Aug-21	148.90	154.20	3.56%
Gillette India Limited	11-Jun-21	5847.00	6249.00	6.88%
Glaxosmithkline Pharmaceuticals Ltd	27-Aug-20	1455.75	1807.50	24.16%
Godrej Consumer Products Limited	16-Jun-20	634.00	980.70	54.68%
HDFC Asset Management Company Ltd.	19-Dec-18	1572.90	3844.00	144.39%
HDFC Bank Limited	10-Nov-16	639.00	1641.00	156.81%
HDFC Life Insurance Co Ltd	19-Jan-18	485.05	746.00	53.80%
Hero Motocorp Ltd	29-Sep-20	3174.95	3629.05	14.30%
Hindustan Unilever Ltd.	13-Nov-17	1290.70	2614.30	102.55%
Housing Development Finance Corp Ltd	19-Dec-17	1720.00	2896.00	68.37%
ICICI Bank Ltd.	06-Apr-18	278.65	679.40	143.82%
ICICI Lombard General Insurance	19-Sep-19	1154.90	1626.45	40.83%
ICICI Prudential Life Insurance Company Ltd.	28-Jun-18	375.80	660.20	75.68%
ICICI Securities Ltd	24-Sep-20	466.65	802.00	71.86%
Indusindbnk	08-Jun-20	451.00	1119.50	148.23%
Infosys Ltd.	17-Aug-17	487.60	1596.85	227.49%
INOX Leisure Ltd	13-Aug-21	327.80	332.70	1.49%
Ion Exchange (India) Ltd	01-June-21	1464.95	2947.00	101.17%
Jubilant Ingrevia Ltd	22-Jul-21	623.00	640.00	2.73%
Kotak Mahindra Bank Ltd	10-Nov-16	822.10	2049.00	149.24%
L&T Finance Holdings Ltd	03-Dec-20	84.05	113.40	34.92%

NIFTY 50 STOCKS BELOW 200SMA

SCRIP NAME	SMA 200	CLOSING (14-09-2021)
DRREDDY	4967	4930
M&M	788	750
HEROMOTOCO	3027	2851
MARUTI	7200	6894
BAJAJ-AUTO	3806	3751
--	--	--
--	--	--
--	--	--
--	--	--
--	--	--
--	--	--
--	--	--

Weekly Expiry Most Active Nifty Call Option

Symbol	Expiry Date	Strike Price	Highest Open Interest (Contracts)
NIFTY	16-Sep-2021	17400	1,09,296
NIFTY	16-Sep-2021	17500	93,906
NIFTY	16-Sep-2021	18000	93,009

Weekly Expiry Most Active Nifty Put Option

Symbol	Expiry Date	Strike Price	Highest Open Interest (Contracts)
NIFTY	16-Sep-2021	17300	85,505
NIFTY	16-Sep-2021	17200	71,678
NIFTY	16-Sep-2021	16500	59,896

Securities in Ban For Trade Date 15-09-2021

CANBK, ESCORT,EXIDEIND, IDEA,IRCTC, LICHSFIN, NATIONALUM,SUNTV.

Bulk Deals (NSE)

Deal Date	Scrip Name	Client Name	Deal Type	Quantity	Price
14-Sep-21	ZEEL	RARE ENTERPRISES	BUY	5000000	220.44
14-Sep-21	ZEEL	BOFA SECURITIES EUROPE SA	BUY	4865513	236.20
14-Sep-21	ESABINDIA	ACACIA CONSERVATION FUND LP	SELL	361000	2,235.28

Bulk Deals (BSE)

Deal Date	Scrip Name	Client Name	Deal Type	Quantity	Price
14-Sep-21	AMIORG	TWENTYFIRST CENTURY SHARES AND SECURITIES LTD	B	500000	910.60
14-Sep-21	ISGEC	GOLDMAN SACHS FUNDS - GOLDMAN SACHS INDIA EQUITY PORTFOLIO	B	1383655	729.45
14-Sep-21	ISGEC	GOLDMAN SACHS INDIA LIMITED	S	1383655	729.45
14-Sep-21	KAJARIACER	GOLDMAN SACHS FUNDS - GOLDMAN SACHS INDIA EQUITY PORTFOLIO	B	1362000	1,172.60
14-Sep-21	KAJARIACER	GOLDMAN SACHS INDIA LIMITED	S	1362000	1,172.60
14-Sep-21	KEI	GOLDMAN SACHS FUNDS - GOLDMAN SACHS INDIA EQUITY PORTFOLIO	B	1,472,757	804.90
14-Sep-21	KEI	GOLDMAN SACHS INDIA LIMITED	S	1,472,757	804.90
14-Sep-21	SONACOMS	GOLDMAN SACHS FUNDS - GOLDMAN SACHS INDIA EQUITY PORTFOLIO	B	3,553,374	583.55
14-Sep-21	SONACOMS	GOLDMAN SACHS INDIA LIMITED	S	3,553,374	583.55

Note- Executed on 14th Sep 2021. Bulk Deal Buy/Sell done by fund house is considered

Research Analyst Registration No.

INH000002764

Contact

SMS: 'Arihant' to 56677

Website

www.arihantcapital.com

mail Id

arihant.research@arihantcapital.com

**Arihant is Forbes Asia's '200 Best under a \$Billion' Company
'Best Emerging Commodities Broker' awarded by UTV Bloomberg**

Disclaimer: This document has been prepared by Arihant Capital Markets Limited (hereinafter called as Arihant) and its subsidiaries and associated companies. This document does not constitute an offer or solicitation for the purchase and sale of any financial instrument by Arihant. Receipt and review of this document constitutes your agreement not to circulate, redistribute, retransmit or disclose to others the contents, opinions, conclusion, or information contained herein. This document has been prepared and issued on the basis of publicly available information, internally developed data and other sources believed to be reliable. Whilst meticulous care has been taken to ensure that the facts stated are accurate and opinions given are fair and reasonable, neither the analyst nor any employee of our company is in any way is responsible for its contents and nor is its accuracy or completeness guaranteed. This document is prepared for assistance only and is not intended to be and must not alone be taken as the basis for an investment decision. All recipients of this material should before dealing and or transacting in any of the products referred to in this material make their own investigation, seek appropriate professional advice. The investments discussed in this material may not be suitable for all investors. The recipient alone shall be fully responsible/are liable for any decision taken on the basis of this material. Arihant Capital Markets Ltd (including its affiliates) or its officers, directors, personnel and employees, including persons involved in the preparation or issuance of this material may; (a) from time to time, have positions in, and buy or sell or (b) be engaged in any other transaction and earn brokerage or other compensation in the financial instruments/products discussed herein or act as advisor or lender/borrower in respect of such securities/financial instruments/products or have other potential conflict of interest with respect to any recommendation and related information and opinions. The said persons may have acted upon and/or in a manner contradictory with the information contained here and may have a position or be otherwise interested in the investment referred to in this document before its publication. The user of this report assumes the entire risk of any use made of this data/report. Arihant especially states that it has no financial liability, whatsoever, to the users of this report.

Arihant Capital Markets Ltd

#1011 Solitaire Corporate Park Building No.10 1st Floor
Andheri Ghatkopar Link Road Chakala Andheri (E) Mumbai-400093
T. 022-42254800. Fax: 022-42254880
www.arihantcapital.com