

To join our research group on TELEGRAM, please click on the links - <https://bit.ly/37T17JR> and <https://bit.ly/2svtU7k>

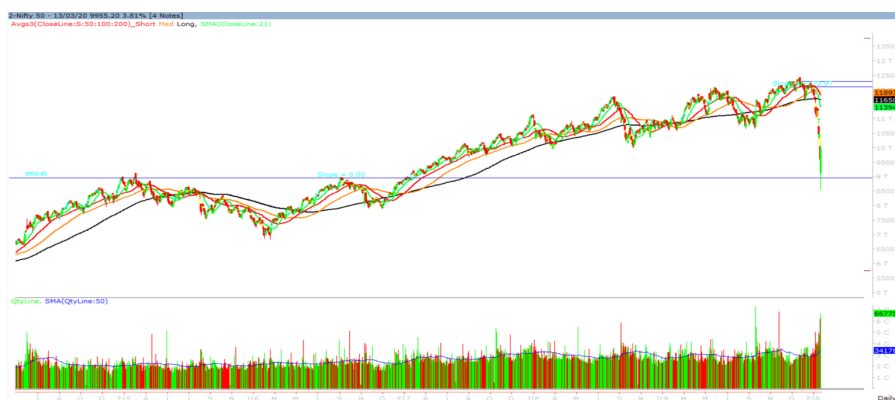
Monday, 16th March, 2020

| Indian Indices | Last Price | (%) Chg |
|------------------------|------------|---------|
| BSE | 34103.48 | 4.04 |
| NSE | 10023.65 | 4.52 |
| World Indices | | |
| Dow Jones | 23185.62 | 9.36 |
| Nasdaq | 7874.88 | 9.35 |
| Nikkei | 17449.59 | 0.11 |
| Hang Seng | 23543.63 | -2.04 |
| FTSE | 5366.11 | 2.46 |
| Commodity | Last Price | (%) Chg |
| GOLD(\$/ounce) | 1539.80 | 1.52 |
| Silver (\$/Ounce) | 14.66 | 1.14 |
| Crude (\$/BBL) | 32.78 | -3.16 |
| Aluminium spot (\$/mt) | 1678.25 | -0.62 |
| Copper SPOT (\$/mt) | 5430.25 | -0.44 |
| Lead Spot (\$/MT) | 1748.75 | -0.46 |
| Natural gas \$/MMBtu | 1.82 | -2.57 |
| Currency | Last Price | (%) Chg |
| USD-INR | 71.10 | -0.47 |
| EUR-INR | 82.79 | -0.93 |
| Bond | Last Price | (%) Chg |
| India 10 Yr Bond yield | 6.32 | 1.38 |

| 52 Wk High (A group) | | | 52 Wk Low (A group) | | |
|----------------------|-------------|------------|---------------------|-------------|-----------|
| Company | Close Price | 52 Wk High | Company | Close Price | 52 Wk Low |
| -- | -- | -- | ABB | 1024 | 900 |
| -- | -- | -- | ACC | 1180 | 1010 |
| -- | -- | -- | ADANIPO | 295 | 234 |
| -- | -- | -- | AXISBANK | 568 | 461 |
| -- | -- | -- | CANBK | 107 | 83 |

Source: BSE

Market Technical Outlook



Nifty opened down with a gap but recovered all its losses during the day and close in the positive territory. At present 9000 is crucial support if breached on closing basis then it can test the prior low of 8555 – 8400 levels. On the upside, 10100 – 10300 levels may act as resistance going forward.

We still maintain our stance that the trend remains down and pull-back rallies are likely to face selling pressure. Hence, one needs to adopt cautious approach at current level.

News for stocks

| | |
|---------|--|
| HUL | The board of directors of HUL will meet on 1 April to announce the merger with GlaxoSmithKline Consumer Healthcare (GSKCH). HUL and GSKCH received the approval from the Mumbai and Chandigarh bench of the National Company Law Tribunal, respectively for the merger |
| YESBANK | SBI has so far invested Rs 6,050 crore. ICICI Bank Ltd and mortgage lender HDFC will invest Rs 1,000 crore each. Axis Bank will invest Rs 600 crore, while Kotak Mahindra Bank will put in Rs 500 crore |

Foreign Institutional Investments (FII's) Activities

| Name of Segment | Net Buyer/seller | Rs In Cr |
|-----------------------------|------------------|----------------|
| Index Futures | Net Buy | 2497.57 |
| Stock Futures | Net Buy | 2100.82 |
| Net Future Position | Net Buy | 4598.39 |
| Index Options | Net Buy | 176.60 |
| Stock Options | Net Buy | 314.77 |
| Net Options Position | Net Buy | 491.37 |
| FII In cash Segment | Net Sell | -6027.58 |
| DII In cash Segment | Net Buy | 5867.90 |
| Net Cash Position | Net Sell | -159.68 |

Technical Levels for Nifty 50 Companies

| Company | Closing 13-03-2020 | Buy/Sell Trigger | Resistance 1 | Resistance 2 | Support 1 | Support 2 |
|-------------|-----------------------|---------------------|-----------------|-----------------|--------------|--------------|
| ADANI PORTS | 292.75 | 275.15 | 318.3 | 343.85 | 249.6 | 206.45 |
| ASIAN PAINT | 1797.7 | 1770.43 | 1871.02 | 1944.33 | 1697.12 | 1596.53 |
| AXIS BANK | 568.8 | 535.18 | 619.27 | 669.73 | 484.72 | 400.63 |
| BAJAJ-AUTO | 2357.1 | 2276.52 | 2513.03 | 2668.97 | 2120.58 | 1884.07 |
| BAJAJ FINSV | 7742 | 7383.38 | 8242.52 | 8743.03 | 6882.87 | 6023.73 |
| BAJFINANCE | 3952.55 | 3759.03 | 4237.02 | 4521.48 | 3474.57 | 2996.58 |
| BHARTIARTL | 491.85 | 473.63 | 527.27 | 562.68 | 438.22 | 384.58 |
| BPCL | 376.05 | 349.4 | 423.35 | 470.65 | 302.1 | 228.15 |
| BRITANNIA | 2763.6 | 2741.17 | 3072.33 | 3381.07 | 2432.43 | 2101.27 |
| CIPLA | 425.55 | 405.27 | 455.23 | 484.92 | 375.58 | 325.62 |
| COALINDIA | 154.1 | 146.43 | 169.22 | 184.33 | 131.32 | 108.53 |
| DRREDDY | 2885.1 | 2876.83 | 3143.67 | 3402.23 | 2618.27 | 2351.43 |
| EICHERMOT | 17672.15 | 17134.27 | 19066.54 | 20460.92 | 15739.88 | 13807.62 |
| GAIL | 84.55 | 80.4 | 95.8 | 107.05 | 69.15 | 53.75 |
| GRASIM | 604.95 | 580.53 | 656.07 | 707.18 | 529.42 | 453.88 |
| HCLTECH | 492.9 | 468.7 | 541.45 | 590 | 420.15 | 347.4 |
| HDFC | 2066.8 | 1959.55 | 2230.95 | 2395.1 | 1795.4 | 1524 |
| HDFCBANK | 1069.8 | 1023.48 | 1127.77 | 1185.73 | 965.52 | 861.23 |
| HEROMOTOCO | 1883.95 | 1787.32 | 2039.63 | 2195.32 | 1631.63 | 1379.32 |
| HINDALCO | 127.45 | 120.18 | 137.27 | 147.08 | 110.37 | 93.28 |
| HINDUNILVR | 2033.2 | 2013.77 | 2139.43 | 2245.67 | 1907.53 | 1781.87 |
| ICICIBANK | 447.2 | 435.72 | 476.23 | 505.27 | 406.68 | 366.17 |
| INDUSINDBK | 803.75 | 729.85 | 908.6 | 1013.45 | 625 | 446.25 |
| INFRA TEL | 227.25 | 225.67 | 243.28 | 259.32 | 209.63 | 192.02 |
| INFY | 642.35 | 626.45 | 682.9 | 723.45 | 585.9 | 529.45 |
| IOC | 92.25 | 87.17 | 98.33 | 104.42 | 81.08 | 69.92 |
| ITC | 162.25 | 153.62 | 172.63 | 183.02 | 143.23 | 124.22 |
| JSWSTEEL | 214.9 | 202.68 | 230.17 | 245.43 | 187.42 | 159.93 |
| KOTAK BANK | 1470.05 | 1382.37 | 1592.68 | 1715.32 | 1259.73 | 1049.42 |
| LT | 1051.45 | 1000.63 | 1111.27 | 1171.08 | 940.82 | 830.18 |
| M&M | 428.85 | 408.08 | 470.52 | 512.18 | 366.42 | 303.98 |
| MARUTI | 5838.6 | 5568.38 | 6333.72 | 6828.83 | 5073.27 | 4307.93 |
| NESTLEIND | 14991.8 | 14965.6 | 15881.2 | 16770.6 | 14076.2 | 13160.6 |
| NTPC | 98.05 | 93.35 | 105.45 | 112.85 | 85.95 | 73.85 |
| ONGC | 65.9 | 60.97 | 71.93 | 77.97 | 54.93 | 43.97 |
| POWERGRID | 167.9 | 163.33 | 177.17 | 186.43 | 154.07 | 140.23 |
| RELIANCE | 1105.3 | 1062.57 | 1182.73 | 1260.17 | 985.13 | 864.97 |
| SBIN | 242 | 225.15 | 265.65 | 289.3 | 201.5 | 161 |
| SUNPHARMA | 384.2 | 370.72 | 416.43 | 448.67 | 338.48 | 292.77 |
| TATAMOTORS | 89.75 | 87.32 | 96.58 | 103.42 | 80.48 | 71.22 |
| TATASTEEL | 326.7 | 304.72 | 354.08 | 381.47 | 277.33 | 227.97 |
| TCS | 1806.3 | 1710.78 | 1915.52 | 2024.73 | 1601.57 | 1396.83 |
| TECHM | 655.95 | 617.28 | 708.67 | 761.38 | 564.57 | 473.18 |
| TITAN | 1084.35 | 1055.03 | 1164.02 | 1243.68 | 975.37 | 866.38 |
| ULTRACEMCO | 3788.9 | 3638.13 | 4162.27 | 4535.63 | 3264.77 | 2740.63 |
| UPL | 410.85 | 408.65 | 440.2 | 469.55 | 379.3 | 347.75 |
| VEDL | 84.05 | 79.85 | 90.8 | 97.55 | 73.1 | 62.15 |
| WIPRO | 197.4 | 190.37 | 211.48 | 225.57 | 176.28 | 155.17 |
| YESBANK | 25.55 | 24.87 | 28.38 | 31.22 | 22.03 | 18.52 |
| ZEEL | 182.8 | 178.48 | 201.82 | 220.83 | 159.47 | 136.13 |

(Source – IRIS)

Guru Call: From the expert's desk

| Company | Reco Date | Reco Price (Buy on dips) | High till date | Return% |
|--|-----------|--------------------------|----------------|---------|
| Aditya Birla Capital | 22-Nov-19 | 95.75 | 115.35 | 20.47% |
| Asian Paints Ltd. | 30-Mar-17 | 1068.10 | 1916.70 | 79.45% |
| Avenue Supermarts Ltd. | 31-Jul-17 | 898.55 | 2560.00 | 184.90% |
| Axis Bank Ltd. | 10-Apr-18 | 519.30 | 827.75 | 59.40% |
| Bajaj Finance Ltd. | 11-Oct-18 | 2271.00 | 4923.40 | 116.79% |
| Bajaj Finserv Ltd | 1-Nov-16 | 3416.80 | 9950.00 | 191.21% |
| Bajaj Holdings And Investment Ltd | 19-May-16 | 1499.10 | 3950.00 | 163.49% |
| Bandhan Bank Ltd. | 19-Dec-18 | 556.40 | 650.00 | 16.82% |
| Bharat Petroleum Corporation Ltd. | 23-Oct-19 | 531.50 | 549.00 | 3.29% |
| Century Textile and Industries Ltd | 25-Nov-16 | 326.00 | 656.90 | 101.50% |
| Cipla Ltd | 20-Mar-17 | 597.30 | 678.45 | 13.59% |
| Colgate Palmolive | 16-Sep-19 | 1314.00 | 1642.60 | 25.01% |
| Container Corporation | 22-Nov-19 | 577.00 | 603.00 | 4.51% |
| Dabur India | 22-Oct-19 | 466.00 | 525.00 | 12.66% |
| DLF Ltd | 10-Apr-19 | 194.30 | 265.90 | 36.85% |
| Emami Limited | 26-Jun-19 | 290.35 | 357.70 | 23.20% |
| Godrej Industries Ltd. | 12-Feb-18 | 550.70 | 657.60 | 19.41% |
| Godrej Properties Ltd. | 19-Dec-18 | 685.30 | 1189.25 | 73.54% |
| Grasim Industries Ltd. | 31-May-17 | 1132.50 | 1331.00 | 17.53% |
| Havells India Ltd. | 8-Dec-17 | 525.75 | 806.85 | 53.47% |
| Housing Development Finance Corp Ltd | 19-Dec-17 | 1720.00 | 2499.90 | 45.34% |
| HDFC Asset Management Company Ltd. | 19-Dec-18 | 1572.90 | 3844.00 | 144.39% |
| HDFC Bank Limited | 10-Nov-16 | 639.00 | 1305.50 | 104.30% |
| HDFC Life Insurance Co Ltd | 19-Jan-18 | 485.05 | 646.40 | 33.26% |
| Hindustan Unilever Ltd. | 13-Nov-17 | 1290.70 | 2308.20 | 78.83% |
| ICICI Bank Ltd. | 6-Apr-18 | 278.65 | 552.20 | 98.17% |
| ICICI Prudential Life Insurance Company Ltd. | 28-Jun-18 | 375.80 | 537.30 | 42.97% |
| ICICI Lombard General Insurance | 19-Sep-19 | 1154.90 | 1440.40 | 24.72% |
| Infosys Ltd. | 17-Aug-17 | 487.60 | 847.00 | 73.71% |
| Kansai Nerolac Paints | 16-Dec-19 | 529.85 | 551.00 | 3.99% |
| Kotak Mahindra Bank Ltd | 10-Nov-16 | 822.10 | 1740.00 | 111.65% |
| Mahindra & Mahindra Ltd. | 5-Jun-17 | 709.25 | 993.00 | 40.01% |
| Manappuram Finance Ltd. | 24-Apr-18 | 119.20 | 194.80 | 63.42% |
| Mahanagar Gas | 15-Nov-19 | 1029.00 | 1246.20 | 21.11% |
| Marico Ltd. | 4-Apr-18 | 325.00 | 404.00 | 24.31% |
| Nestle India Ltd. | 27-Sep-18 | 9729.40 | 16835.15 | 73.03% |
| Oberoi Realty Ltd. | 23-Nov-17 | 508.60 | 641.70 | 26.17% |
| Phoenix Mills Limited | 7-Jul-19 | 655.15 | 979.00 | 49.43% |
| Pidilite Industries Limited | 4-Oct-16 | 681.60 | 1661.00 | 143.69% |
| Prestige Estates Projects Limited | 6-Jun-19 | 286.70 | 426.00 | 48.59% |
| Nam-India | 25-Nov-18 | 377.00 | 452.90 | 20.13% |
| Rites Ltd. | 19-Dec-18 | 226.96 | 331.00 | 45.84% |
| RBL Bank | 22-Nov-19 | 334.00 | 391.20 | 17.13% |
| State Bank Of India | 28-Aug-18 | 308.00 | 373.80 | 21.36% |
| Shipping Corporation | 22-Nov-19 | 64.00 | 65.95 | 3.05% |
| Tata Chemicals Limited | 24-Dec-19 | 296.89 | 339.70 | 14.42% |
| Tata Consumer | 29-Jun-17 | 149.15 | 408.00 | 173.55% |
| Tata Consultancy Services Ltd. | 8-Jan-18 | 1344.60 | 2296.20 | 70.77% |
| Trent Ltd. | 19-Dec-18 | 348.40 | 794.00 | 127.90% |
| Ultratech Cement Ltd. | 19-Dec-18 | 4084.60 | 4904.95 | 20.08% |
| Voltas Ltd. | 27-Mar-18 | 613.90 | 741.00 | 20.70% |
| Whirlpool Of India Ltd. | 7-Dec-16 | 872.25 | 2555.00 | 192.92% |
| Zee Entertainment | 22-Nov-19 | 345.00 | 362.00 | 4.93% |

NIFTY 50 STOCKS BELOW 200SMA

| SCRIP NAME | SMA 200 | CLOSING (13-03-2020) |
|-------------|----------|----------------------|
| INFY | 752.67 | 642.35 |
| WIPRO | 253.76 | 197.40 |
| RELIANCE | 1374.30 | 1105.30 |
| ZEEL | 301.22 | 182.80 |
| LT | 1376.47 | 1051.45 |
| ITC | 246.44 | 162.25 |
| HCLTECH | 553.43 | 492.90 |
| TATASTEEL | 421.32 | 326.70 |
| SBIN | 314.78 | 242.00 |
| GRASIM | 777.74 | 604.95 |
| TATAMOTORS | 153.81 | 89.75 |
| CIPLA | 480.86 | 425.55 |
| M&M | 561.97 | 428.85 |
| HDFC | 2225.23 | 2066.80 |
| HINDALCO | 192.94 | 127.45 |
| BPCL | 436.07 | 376.05 |
| ICICIBANK | 468.22 | 447.20 |
| HDFCBANK | 1208.77 | 1069.80 |
| HEROMOTOCO | 2504.30 | 1883.95 |
| SUNPHARMA | 418.06 | 384.20 |
| BRITANNIA | 2951.56 | 2763.60 |
| IOC | 133.03 | 92.25 |
| AXISBANK | 724.98 | 568.80 |
| ONGC | 131.94 | 65.90 |
| TITAN | 1197.33 | 1084.35 |
| VEDL | 149.23 | 84.05 |
| UPL | 583.00 | 410.85 |
| GAIL | 130.83 | 84.55 |
| EICHERMOT | 19363.58 | 17672.15 |
| INDUSINDBK | 1381.29 | 803.75 |
| ADANI PORTS | 383.22 | 292.75 |
| POWERGRID | 196.17 | 167.90 |
| ULTRACEMCO | 4291.45 | 3788.90 |
| TCS | 2147.56 | 1806.30 |
| KOTAKBANK | 1577.99 | 1470.05 |
| TECHM | 736.89 | 655.95 |
| JSWSTEEL | 250.52 | 214.90 |
| NTPC | 120.67 | 98.05 |
| MARUTI | 6717.33 | 5838.60 |
| YESBANK | 66.45 | 25.55 |
| BAJAJ-AUTO | 2962.23 | 2357.10 |
| BAJAJFINSV | 8456.17 | 7742.00 |
| COALINDIA | 205.83 | 154.10 |
| INFRA TEL | 248.08 | 227.25 |

Securities in Ban For Trade Date 16-03-2020

NIL

Weekly Expiry Most Active Nifty Call Option

| Symbol | Expiry Date | Strike Price | Highest Open Interest (OI) |
|--------|-------------|--------------|----------------------------|
| NIFTY | 19-Mar-2020 | 11000 | 1321875 |
| NIFTY | 19-Mar-2020 | 10500 | 904650 |
| NIFTY | 19-Mar-2020 | 11500 | 882525 |

Weekly Expiry Most Active Nifty Put Option

| Symbol | Expiry Date | Strike Price | Highest Open Interest (OI) |
|--------|-------------|--------------|----------------------------|
| NIFTY | 19-Mar-2020 | 9000 | 1425300 |
| NIFTY | 19-Mar-2020 | 8100 | 679200 |
| NIFTY | 19-Mar-2020 | 9500 | 598500 |

Bulk Deals (BSE)

| Deal Date | Scrip Name | Client Name | Deal Type | Quantity | Price |
|-----------|------------|--------------------------------------|-----------|----------|--------|
| 13-Mar-20 | BHAGCHEM | EDELWEISS CUSTODIAL SERVICES LIMITED | S | 500000 | 295.49 |
| 13-Mar-20 | BHAGCHEM | RAJESH NUWAL (HUF) | B | 500000 | 295.52 |
| 13-Mar-20 | MCCHRLS-B | RAJESH NUWAL (HUF) | B | 200050 | 300.00 |
| 13-Mar-20 | MCCHRLS-B | EDELWEISS CUSTODIAL SERVICES LIMITED | S | 200000 | 300.00 |
| 13-Mar-20 | VARROC | RELIANCE MUTUAL FUND | B | 1291000 | 232.00 |

Bulk Deals (NSE)

| Deal Date | Scrip Name | Client Name | Deal Type | Quantity | Price |
|-----------|---------------------------|---|-----------|----------|--------|
| 13-Mar-20 | Indian Energy Exc Ltd | WARD FERRY ASIA FUND LTD. | BUY | 3856147 | 144.34 |
| 13-Mar-20 | Tata Motors DVR 'A' Ord | TATA SONS PRIVATE LIMITED | BUY | 8229720 | 46.97 |
| 13-Mar-20 | Tata Steel Limited | TATA SONS PRIVATE LIMITED | BUY | 7794686 | 300.56 |
| 13-Mar-20 | ADF Foods Limited | ADITYA BIRLA FINANCE LIMITED | SELL | 150000 | 154.51 |
| 13-Mar-20 | Ashoka Buildcon Ltd | BAJAJ FINANCE LIMITED | SELL | 1504668 | 50.60 |
| 13-Mar-20 | Asian Hotels (North) Ltd | VENUS INDIA ASSET-FINANCE PRIVATE LIMITED | SELL | 300000 | 64.00 |
| 13-Mar-20 | GHCL Limited | BAJAJ FINANCE LIMITED | SELL | 1830713 | 88.06 |
| 13-Mar-20 | Indian Energy Exc Ltd | AMANSA INVESTMENTS LTD | SELL | 4725552 | 144.53 |
| 13-Mar-20 | Tata Motors DVR 'A' Ord | SOCIETE GENERALE | SELL | 2803481 | 47.04 |
| 13-Mar-20 | TRF Limited | EDELWEISS CUSTODIAL SERVICES LIMITED | SELL | 131325 | 53.83 |
| 13-Mar-20 | Triveni Engineering & Ind | BAJAJ FINANCE LIMITED | SELL | 2921556 | 37.27 |

Note- Executed on 13th Mar 2020. Bulk Deal Buy/Sell done by fund house is considered.

IPO Listing Today

Company Name: SBI Cards and payment Services LTD, BSE Code: 543066, NSE Symbol: SBICARD, Issue Price: Rs 755 per share, Series: EQ

Research Analyst Registration No.

INH000002764

Contact

SMS: 'Arihant' to 56677

Website

www.arihantcapital.com

mail Id

arihant.research@arihantcapital.com

**Arihant is Forbes Asia's '200 Best under a \$Billion' Company
'Best Emerging Commodities Broker' awarded by UTV Bloomberg**

Disclaimer: This document has been prepared by Arihant Capital Markets Limited (hereinafter called as Arihant) and its subsidiaries and associated companies. This document does not constitute an offer or solicitation for the purchase and sale of any financial instrument by Arihant. Receipt and review of this document constitutes your agreement not to circulate, redistribute, retransmit or disclose to others the contents, opinions, conclusion, or information contained herein. This document has been prepared and issued on the basis of publicly available information, internally developed data and other sources believed to be reliable. Whilst meticulous care has been taken to ensure that the facts stated are accurate and opinions given are fair and reasonable, neither the analyst nor any employee of our company is in any way is responsible for its contents and nor is its accuracy or completeness guaranteed. This document is prepared for assistance only and is not intended to be and must not alone be taken as the basis for an investment decision. All recipients of this material should before dealing and or transacting in any of the products referred to in this material make their own investigation, seek appropriate professional advice. The investments discussed in this material may not be suitable for all investors. The recipient alone shall be fully responsible/are liable for any decision taken on the basis of this material. Arihant Capital Markets Ltd (including its affiliates) or its officers, directors, personnel and employees, including persons involved in the preparation or issuance of this material may; (a) from time to time, have positions in, and buy or sell or (b) be engaged in any other transaction and earn brokerage or other compensation in the financial instruments/products discussed herein or act as advisor or lender/borrower in respect of such securities/financial instruments/products or have other potential conflict of interest with respect to any recommendation and related information and opinions. The said persons may have acted upon and/or in a manner contradictory with the information contained here and may have a position or be otherwise interested in the investment referred to in this document before its publication. The user of this report assumes the entire risk of any use made of this data/report. Arihant especially states that it has no financial liability, whatsoever, to the users of this report.

Arihant Capital Markets Ltd

#1011 Solitaire Corporate Park Building No.10 1st Floor
Andheri Ghatkopar Link Road Chakala Andheri (E) Mumbai-400093

T. 022-42254800. Fax: 022-42254880

www.arihantcapital.com