

To join our research group on TELEGRAM, please click on the links - <https://bit.ly/2Rt4NyS> and <https://bit.ly/3ciqvDn>

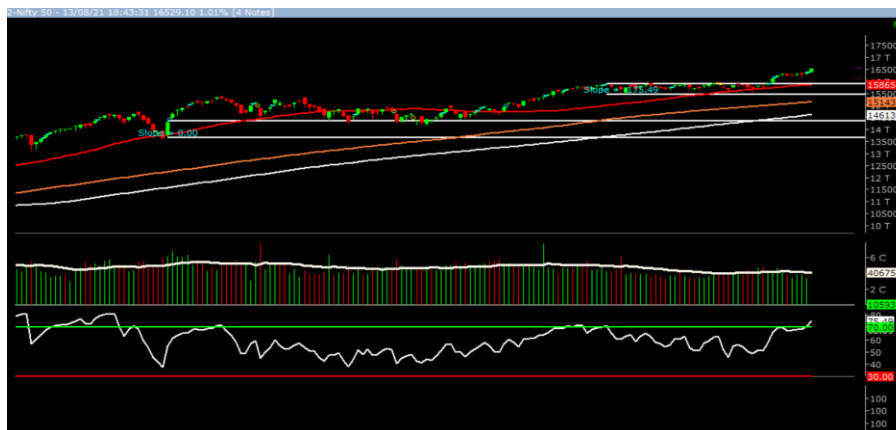
Monday, 16th Aug, 2021

Indian Indices	Last Price	(%) Chg
NSE	16529.10	1.01
BSE	55437.29	1.08
World Indices	Last Price	(%) Chg
Dow Jones	35515.38	0.04
Nasdaq	14822.90	0.04
Nikkei	27441.12	-1.92
Hang Seng	26249.78	-0.54
FTSE	7218.71	0.35
Commodity	Last Price	(%) Chg
GOLD(\$/ounce)	1781.30	0.17
Silver (\$/Ounce)	23.72	-0.25
Crude (\$/BBL)	69.79	-1.13
Aluminium spot (\$/mt)	2602.25	-0.29
Copper SPOT (\$/mt)	9476.00	-0.51
Lead Spot (\$/MT)	2304.00	-1.24
Natural gas \$/MMBtu	3.82	-0.98
Currency	Last Price	(%) Chg
USD-INR	74.38	0.03
EUR-INR	87.48	0.14
Bond		
India 10 Yr Bond yield	6.24	0.24

52 Wk High (A group)			52 Wk Low (A group)		
Company	Close Price	52 Wk High	Company	Close Price	52 Wk Low
BHARTFOR	821	835	--	--	--
AIRTEL	637	638	--	--	--
BIRLASOFT	421	436	--	--	--
CUMMINS	970	989	--	--	--
INFY	1712	1722	--	--	--

Source: BSE

Market Technical Outlook



Nifty opened up with a gap and traded with positive bias throughout the day to close in green. On the daily chart we are observing an upward gap area in the range of 16375 to 16376. Normally gap area does act as support for prices. In coming trading session if Nifty for first hour trades above 16543 then it may test 16650 - 16730 levels. On the downside, 16450 - 16370 levels may act as support for the day.

We still continue to maintain our stance that stock specific activity is likely to continue.

Foreign Institutional Investments (FII's) Activities

Name of Segment	Net Buyer/seller	Rs In Cr
Index Futures	Net Buy	630.60
Stock Futures	Net Buy	1437.31
Net Future Position	Net Buy	2067.91
Index Options	Net Buy	7157.02
Stock Options	Net Sell	-276.01
Net Options Position	Net Buy	6881.01
FII In cash Segment	Net Sell	819.77
DII In cash Segment	Net Buy	149.50
Net Cash Position	Net Buy	969.27

Guru Call: From the expert's desk

Company	Reco Date	Reco Price (Buy on dips)	High till date	Return%
Aarti drugs	21-Aug-20	783.00	1026.95	31.16%
Accelya Solutions India Ltd	10-Jun-21	1203.90	1539.40	27.87%
Aditya Birla Fashion and Retail Ltd	08-Feb-21	164.40	231.65	40.91%
Aegis Logistics	11-Sep-20	204.05	387.90	90.10%
Ajanta Pharma	04-Aug-20	1661.05	2197.90	32.32%
Alkem	08-Jul-20	2427.00	3558.90	46.64%
Ambuja Cements Ltd	07-Jun-21	339.05	408.09	20.36%
Asian Paints Ltd.	30-Mar-17	1068.10	3179.50	197.68%
Astec LifeSciences Limited	09-Jul-21	1360.70	1487.00	9.28%
Avenue Supermarts Ltd.	31-Jul-17	898.55	3448.95	283.84%
Axis Bank Ltd.	10-Apr-18	519.30	827.75	59.40%
Bajaj Consumer Care Ltd	03-Feb-21	255.80	324.00	26.66%
Bajaj Finance Ltd.	11-Oct-18	2271.00	6342.80	179.30%
Bajaj Finserv Ltd	1-Nov-16	3416.80	13110.00	283.69%
Bajaj Holdings And Investment Ltd	19-May-16	1499.10	4060.00	170.83%
Bajaj-Auto	12-Jun-20	2782.00	4361.40	56.77%
Bandhan Bank Ltd.	19-Dec-18	556.40	650.00	16.82%
Berger Paints India Ltd	07-Dec-20	672.20	872.95	29.86%
Bharti Airtel Limited	03-Dec-20	479.90	623.00	29.82%
Birla Corporation Limited	28-Jun-21	1240.00	1450.80	17.00%
Britannia	12-June-20	3366.00	4010.00	19.13%
Cadila	03-Apr-20	274.00	673.70	145.88%
CAMS	08-Oct-20	1334.90	3740.65	180.22%
CDSL	17-Sep-20	485.90	1579.00	224.96%
Ceat Limited	28-Jan-21	1541.05	1763.00	14.40%
Century Textile and Industries Ltd	25-Nov-16	750.40	1471.20	96.06%
CESC Ltd	08-Jun-21	758.20	870.90	14.86%
CG Power and Industrial Solutions Ltd	10-Feb-21	45.25	91.95	103.20%
Chola finance	25-Sep-20	238.70	600.95	151.76%
Chola Holding	23-Sep-20	391.80	711.00	81.47%
Cipla Ltd	20-Mar-17	597.30	997.00	66.92%
Colgate Palmolive	16-Sep-19	1314.00	1794.85	36.59%
Crompton Greaves Consumer	11-Jun-20	225.00	496.70	120.76%
Dabur India	22-Oct-19	466.00	605.00	29.83%
DFM Foods Ltd	03-Feb-21	409.05	453.80	10.94%
Divislab	04-Aug-20	2641.00	4848.00	83.57%
DLF Ltd	10-Apr-19	194.30	338.80	74.37%
Dr Reddy	04-Aug-20	4530.00	5614.60	23.94%
Emami Limited	26-Jun-19	290.35	578.50	99.24%
Finolex Cables Ltd	08-Feb-21	368.80	557.70	51.22%
Finolex Industries Ltd	01-Jul-21	184.25	187.35	1.68%
Fortis	14-Jul-20	127.00	253.90	99.92%
Galaxy Surface	01-Jul-20	1557.00	3294.70	111.61%
Gillette India Limited	11-Jun-21	5847.00	6249.00	6.88%
Glaxosmithkline Pharmaceuticals Ltd	27-Aug-20	1455.75	1807.50	24.16%
Godrej Consumer Products Limited	16-Jun-20	634.00	980.70	54.68%
Godrej Industries Ltd.	12-Feb-18	550.70	657.60	19.41%
Godrej Properties Ltd	04-Dec-20	1200.30	1596.80	33.03%
Greaves Cotton Ltd	14-Jul-21	176.65	182.00	3.03%
HDFC Asset Management Company Ltd.	19-Dec-18	1572.90	3844.00	144.39%
HDFC Bank Limited	10-Nov-16	639.00	1641.00	156.81%
HDFC Life Insurance Co Ltd	19-Jan-18	485.05	746.00	53.80%

Guru Call: From the expert's desk

Company	Reco Date	Reco Price (Buy on dips)	High till date	Return%
Hero Motocorp Ltd	29-Sep-20	3174.95	3629.05	14.30%
Hindustan Unilever Ltd.	13-Nov-17	1290.70	2614.30	102.55%
Housing Development Finance Corp Ltd	19-Dec-17	1720.00	2896.00	68.37%
ICICI Bank Ltd.	06-Apr-18	278.65	679.40	143.82%
ICICI Lombard General Insurance	19-Sep-19	1154.90	1626.45	40.83%
ICICI Prudential Life Insurance Company Ltd.	28-Jun-18	375.80	660.20	75.68%
ICICI Securities Ltd	24-Sep-20	466.65	802.00	71.86%
Indusindbnk	08-Jun-20	451.00	1119.50	148.23%
Infosys Ltd.	17-Aug-17	487.60	1596.85	227.49%
Ion Exchange (India) Ltd	01-June-21	1464.95	2947.00	101.17%
Ipca Lab	11-Aug-20	2099.00	2460.00	17.20%
JK Cement	19-Jun-20	1378.00	3289.00	138.68%
JK Lakshmi Cement	03-Jul-20	276.00	721.25	161.32%
Jubilant Ingrevia Ltd	22-Jul-21	623.00	640.00	2.73%
Justdial	07-Oct-20	385.60	1138.00	195.12%
Jyoti lab	05-Aug-20	132.90	187.30	40.93%
Kansai Nerolac Paints	16-Dec-19	529.85	680.00	28.34%
Kotak Mahindra Bank Ltd	10-Nov-16	822.10	2049.00	149.24%
L&T Finance Holdings Ltd	03-Dec-20	84.05	113.40	34.92%
LIC Housing Finance Limited	06-Jan-21	408.30	542.45	32.86%
Mahanagar Gas	15-Nov-19	1029.00	1284.40	24.82%
Mahindra & Mahindra Fin. Services Ltd.	08-Dec-20	175.25	224.30	27.99%
Mahindra & Mahindra Ltd.	05-Jun-17	709.25	993.00	40.01%
Manappuram Finance Ltd.	24-Apr-18	119.20	194.80	63.42%
Marico Ltd.	04-Apr-18	325.00	549.60	69.11%
Maruti Suzuki India Ltd	13-Aug-20	5988.85	8329.00	39.08%
Nam-India	25-Nov-18	377.00	452.90	20.13%
Nestle India Ltd.	27-Sep-18	9729.40	18844.00	93.68%
NRB Bearings Limited	18-Jun-21	134.30	154.40	14.97%
Oberoi Realty Ltd.	23-Nov-17	508.60	729.00	43.33%
PEL	02-Sep-20	1246.25	2520.90	102.28%
Pfizer	22-Jul-20	4150.00	5900.00	42.17%
Phoenix Mills Limited	07-Jul-19	655.15	979.00	49.43%
Pidilite Industries Limited	04-Oct-16	681.60	2333.95	242.42%
Polycab India Ltd	06-Jan-21	1176.10	2033.00	72.86%
Raymond	25-Sep-20	263.55	473.90	79.81%
RBL Bank	25-Sep-20	164.95	274.30	66.29%
Reliance	22-Apr-20	1351.00	2369.35	75.38%
Rites Ltd.	19-Dec-18	226.96	331.00	45.84%
SBI Card	16-Jul-20	719.00	1139.50	58.48%
SBI Life	20-May-20	715.00	1064.95	48.94%
State Bank of India	03-Feb-21	335.95	441.95	31.55%
Sun Pharma	07-Aug-20	525.00	721.85	37.50%
Suprajit Engineering Ltd.	08-Feb-21	244.30	324.90	32.99%
Syngene	24-Sep-20	565.70	700.00	23.74%
Tata Chemicals Limited	24-Dec-19	296.89	833.95	180.90%
Tata Coffee Ltd.	28-Jun-21	183.35	198.65	8.34%
Tata Consultancy Services Ltd.	08-Jan-18	1344.60	3399.65	152.84%
Tata Consumer	29-Jun-17	149.15	786.85	427.56%
Trent Ltd.	19-Dec-18	348.40	947.95	172.09%
Ultratech Cement Ltd.	19-Dec-18	4084.60	7544.00	84.69%
VEDL	28-Jun-21	260.80	276.15	5.89%
Voltas Ltd.	27-Mar-18	613.90	1132.00	84.39%
Whirlpool Of India Ltd.	07-Dec-16	872.25	2787.00	219.52%
Shilpa Medicare Ltd	20-Jul-21	661.75	668.90	1.08%

Guru Call: From the expert's desk

Company	Reco Date	Reco Price (Buy on dips)	High till date	Return%
Zee Entertainment	22-Nov-19	345.00	362.00	4.93%

NIFTY 50 STOCKS BELOW 200SMA

SCRIP NAME	SMA 200	CLOSING (13-08-2021)
DRREDDY	4980.32	4652.2
HEROMOTOCO	3050.1	2772.2
EICHERMOT	2589.86	2546.8
KOTAKBANK	1808.94	1788
MARUTI	7215.8	7002.2
HDFCLIFE	676.7	670.5
--	--	--
--	--	--
--	--	--
--	--	--
--	--	--
--	--	--

Weekly Expiry Most Active Nifty Call Option

Symbol	Expiry Date	Strike Price	Highest Open Interest (Contracts)
NIFTY	18-Aug-2021	16800	76,943
NIFTY	18-Aug-2021	16500	61,411
NIFTY	18-Aug-2021	16600	59,544

Weekly Expiry Most Active Nifty Put Option

Symbol	Expiry Date	Strike Price	Highest Open Interest (Contracts)
NIFTY	18-Aug-2021	16400	1,21,204
NIFTY	18-Aug-2021	16300	1,07,204
NIFTY	18-Aug-2021	16500	82,288

Securities in Ban For Trade Date 16-08-2021

CADILAH, CANBK, IBULHSGFIN, NATIONALUM, PNB, RBLBANK, SAIL, SUNTV

IPO Listing Today

- Company Name: Windlas Biotech Limited IPO, BSE Code: 543329, NSE Symbol: WINDLAS, Issue Price: Rs 460 per share, Series: EQ
- Company Name: Exxaro Tiles Limited, BSE Code: 543327, NSE Symbol: EXXARO, Issue Price: Rs 120 per share, Series: EQ
- Company Name: Devyani International Limited, BSE Code: 543330, NSE Symbol: DEVYANI Issue Price: Rs 90 per share, Series: EQ
- Company Name: Krsnaa Diagnostics Limited IPO, BSE Code: 543328, NSE Symbol: KRSNAA, Issue Price: Rs 954 per share, Series: EQ

Bulk Deals (NSE)

N/A

Bulk Deals (BSE)

N/A

Note- Executed on 13th Aug 2021. Bulk Deal Buy/Sell done by fund house is considered

Research Analyst Registration No.

INH000002764

Contact

SMS: 'Arihant' to 56677

Website

www.arihantcapital.com

mail Id

arihant.research@arihantcapital.com

**Arihant is Forbes Asia's '200 Best under a \$Billion' Company
'Best Emerging Commodities Broker' awarded by UTV Bloomberg**

Disclaimer: This document has been prepared by Arihant Capital Markets Limited (hereinafter called as Arihant) and its subsidiaries and associated companies. This document does not constitute an offer or solicitation for the purchase and sale of any financial instrument by Arihant. Receipt and review of this document constitutes your agreement not to circulate, redistribute, retransmit or disclose to others the contents, opinions, conclusion, or information contained herein. This document has been prepared and issued on the basis of publicly available information, internally developed data and other sources believed to be reliable. Whilst meticulous care has been taken to ensure that the facts stated are accurate and opinions given are fair and reasonable, neither the analyst nor any employee of our company is in any way is responsible for its contents and nor is its accuracy or completeness guaranteed. This document is prepared for assistance only and is not intended to be and must not alone be taken as the basis for an investment decision. All recipients of this material should before dealing and or transacting in any of the products referred to in this material make their own investigation, seek appropriate professional advice. The investments discussed in this material may not be suitable for all investors. The recipient alone shall be fully responsible/are liable for any decision taken on the basis of this material. Arihant Capital Markets Ltd (including its affiliates) or its officers, directors, personnel and employees, including persons involved in the preparation or issuance of this material may; (a) from time to time, have positions in, and buy or sell or (b) be engaged in any other transaction and earn brokerage or other compensation in the financial instruments/products discussed herein or act as advisor or lender/borrower in respect of such securities/financial instruments/products or have other potential conflict of interest with respect to any recommendation and related information and opinions. The said persons may have acted upon and/or in a manner contradictory with the information contained here and may have a position or be otherwise interested in the investment referred to in this document before its publication. The user of this report assumes the entire risk of any use made of this data/report. Arihant especially states that it has no financial liability, whatsoever, to the users of this report.

Arihant Capital Markets Ltd

#1011 Solitaire Corporate Park Building No.10 1st Floor
Andheri Ghatkopar Link Road Chakala Andheri (E) Mumbai-400093
T. 022-42254800. Fax: 022-42254880
www.arihantcapital.com