

To join our research group on TELEGRAM, please click on the links - <https://bit.ly/2Rt4NyS> and <https://bit.ly/3ciqvDn>

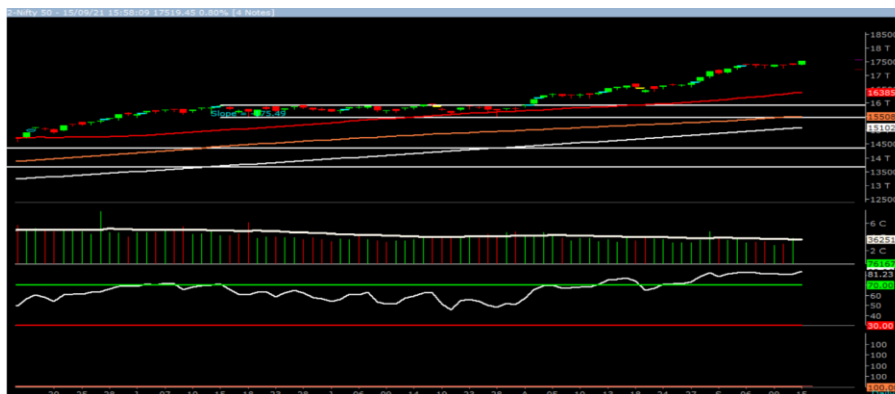
Thursday, 16th Sep, 2021

Indian Indices	Last Price	(%) Chg
NSE	17519.45	0.80
BSE	58723.20	0.82
World Indices	Last Price	(%) Chg
Dow Jones	34814.39	0.68
Nasdaq	15161.53	0.82
Nikkei	30319.43	-0.63
Hang Seng	24750.66	-1.00
FTSE	7016.49	-0.25
Commodity	Last Price	(%) Chg
GOLD(\$/ounce)	1796.60	0.10
Silver (\$/Ounce)	23.96	0.67
Crude (\$/BBL)	75.59	0.11
Aluminium spot (\$/mt)	2892.50	-0.03
Copper SPOT (\$/mt)	9552.00	-0.57
Lead Spot (\$/MT)	2228.75	-0.27
Natural gas \$/MMBtu	5.45	-0.20
Currency	Last Price	(%) Chg
USD-INR	73.47	-0.23
EUR-INR	86.88	-0.03
Bond		
India 10 Yr Bond yield	6.16	-0.56

52 Wk High (A group)			52 Wk Low (A group)		
Company	Close Price	52 Wk High	Company	Close Price	52 Wk Low
ADANITR	1942	1990	--	--	--
ATUL	9750	9998	--	--	--
BAJAJELE	1418	1432	--	--	--
BATA	1837	1842	--	--	--
BEL	207	208	--	--	--

Source: BSE

Market Technical Outlook



Nifty opened on a subdued note and momentum on the upside intensified as the day progressed which led Nifty to close in green. On the daily chart after six days of consolidation we are witnessing a positive candle with higher volumes. This suggests that momentum on the upside is likely to continue. In coming trading session if Nifty for first hour trades above 17532 level then it may test 17620 – 17750 levels. On the downside, 17420 - 17350 levels may act as support for the day.

We still continue to maintain our stance that stock specific activity is likely to continue.

Foreign Institutional Investments (FIIs) Activities

Name of Segment	Net Buyer/seller	Rs In Cr
Index Futures	Net Buy	170.66
Stock Futures	Net Sell	-254.90
Net Future Position	Net Sell	-84.24
Index Options	Net Buy	1300.34
Stock Options	Net Buy	130.85
Net Options Position	Net Buy	1431.19
FII In cash Segment	Net Buy	232.84
DII In cash Segment	Net Buy	167.67
Net Cash Position	Net Buy	400.51

Guru Call: From the expert's desk

Company	Reco Date	Reco Price (Buy on dips)	High till date	Return%
Accelya Solutions India Ltd	10-Jun-21	1203.90	1539.40	27.87%
Aditya Birla Capital Ltd	13-Aug-21	206.60	210.95	2.11%
Aditya Birla Fashion and Retail Ltd	08-Feb-21	164.40	231.65	40.91%
Alkem	08-Jul-20	2427.00	3558.90	46.64%
Apcotex Industries Limited	13-Aug-21	342.90	350.05	2.09%
Asian Paints Ltd.	30-Mar-17	1068.10	3179.50	197.68%
Astec LifeSciences Limited	09-Jul-21	1360.70	1487.00	9.28%
Avenue Supermarts Ltd.	31-Jul-17	898.55	3448.95	283.84%
Axis Bank Ltd.	10-Apr-18	519.30	827.75	59.40%
Bajaj Finserv Ltd	1-Nov-16	3416.80	13110.00	283.69%
Bajaj Holdings And Investment Ltd	19-May-16	1499.10	4060.00	170.83%
Birla Corporation Limited	28-Jun-21	1240.00	1450.80	17.00%
Britannia	12-June-20	3366.00	4010.00	19.13%
Cadila	03-Apr-20	274.00	673.70	145.88%
CAMS	08-Oct-20	1334.90	3740.65	180.22%
CDSL	17-Sep-20	485.90	1579.00	224.96%
Century Textile and Industries Ltd	25-Nov-16	750.40	1471.20	96.06%
CESC Ltd	08-Jun-21	758.20	870.90	14.86%
CG Power and Industrial Solutions Ltd	10-Feb-21	45.25	91.95	103.20%
Chola finance	25-Sep-20	238.70	600.95	151.76%
Chola Holding	23-Sep-20	391.80	711.00	81.47%
Cipla Ltd	20-Mar-17	597.30	997.00	66.92%
Colgate Palmolive	16-Sep-19	1314.00	1794.85	36.59%
Dabur India	22-Oct-19	466.00	605.00	29.83%
DFM Foods Ltd	03-Feb-21	409.05	453.80	10.94%
DLF Ltd	10-Apr-19	194.30	338.80	74.37%
Dr Reddy	04-Aug-20	4530.00	5614.60	23.94%
Emami Limited	26-Jun-19	290.35	578.50	99.24%
Finolex Cables Ltd	08-Feb-21	368.80	557.70	51.22%
Firstsource Solutions Ltd	13-Aug-21	201.10	209.35	4.10%
Fortis	14-Jul-20	127.00	253.90	99.92%
Gati Ltd	13-Aug-21	148.90	154.20	3.56%
Gillette India Limited	11-Jun-21	5847.00	6249.00	6.88%
Glaxosmithkline Pharmaceuticals Ltd	27-Aug-20	1455.75	1807.50	24.16%
Godrej Consumer Products Limited	16-Jun-20	634.00	980.70	54.68%
HDFC Asset Management Company Ltd.	19-Dec-18	1572.90	3844.00	144.39%
HDFC Bank Limited	10-Nov-16	639.00	1641.00	156.81%
HDFC Life Insurance Co Ltd	19-Jan-18	485.05	746.00	53.80%
Hero Motocorp Ltd	29-Sep-20	3174.95	3629.05	14.30%
Hindustan Unilever Ltd.	13-Nov-17	1290.70	2614.30	102.55%
Housing Development Finance Corp Ltd	19-Dec-17	1720.00	2896.00	68.37%
ICICI Bank Ltd.	06-Apr-18	278.65	679.40	143.82%
ICICI Lombard General Insurance	19-Sep-19	1154.90	1626.45	40.83%
ICICI Prudential Life Insurance Company Ltd.	28-Jun-18	375.80	660.20	75.68%
ICICI Securities Ltd	24-Sep-20	466.65	802.00	71.86%
Indusindbnk	08-Jun-20	451.00	1119.50	148.23%
Infosys Ltd.	17-Aug-17	487.60	1596.85	227.49%
INOX Leisure Ltd	13-Aug-21	327.80	332.70	1.49%
Ion Exchange (India) Ltd	01-June-21	1464.95	2947.00	101.17%
Jubilant Ingrevia Ltd	22-Jul-21	623.00	640.00	2.73%
Kotak Mahindra Bank Ltd	10-Nov-16	822.10	2049.00	149.24%
L&T Finance Holdings Ltd	03-Dec-20	84.05	113.40	34.92%

NIFTY 50 STOCKS BELOW 200SMA

SCRIP NAME	SMA 200	CLOSING (15-09-2021)
DRREDDY	4968	4962
M&M	788	755
HEROMOTOCO	3026	2874
MARUTI	7200	691
BAJAJ-AUTO	3810	3789
--	--	--
--	--	--
--	--	--
--	--	--
--	--	--
--	--	--
--	--	--

Weekly Expiry Most Active Nifty Call Option

Symbol	Expiry Date	Strike Price	Highest Open Interest (Contracts)
NIFTY	16-Sep-2021	17500	95,157
NIFTY	16-Sep-2021	17600	89,489
NIFTY	16-Sep-2021	18000	87,892

Weekly Expiry Most Active Nifty Put Option

Symbol	Expiry Date	Strike Price	Highest Open Interest (Contracts)
NIFTY	16-Sep-2021	17400	1,26,033
NIFTY	16-Sep-2021	17500	1,16,136
NIFTY	16-Sep-2021	17300	81,299

Securities in Ban For Trade Date 16-09-2021

CANBK, ESCORT,EXIDEIND, IDEA,IRCTC, LICHSFIN, NATIONALUM,SUNTV,ZEEL.

Bulk Deals (NSE)

Deal Date	Scrip Name	Client Name	Deal Type	Quantity	Price
15-Sep-21	RPSGVENT	STEL HOLDINGS LIMITED	BUY	184700	979.15
15-Sep-21	WALCHANNAG	VISTRA ITCL INDIA LIMITED	SELL	388000	58.82
15-Sep-21	ZENTEC	LOGICAL SOLUTIONS LIMITED	SELL	400000	237.40

Bulk Deals (BSE)

Deal Date	Scrip Name	Client Name	Deal Type	Quantity	Price
15-Sep-21	EMBASSY	BRE MAURITIUS INVESTMENTS II	S	6611345	355.10
15-Sep-21	EMBASSY	SG INDIAN HOLDING (NQ) CO I PTE. LIMITED.	S	7035212	355.10
15-Sep-21	EMBASSY	INTEGRATED CORE STRATEGIES (ASIA) PTE.LTD.	B	6000000	355.10
15-Sep-21	EMBASSY	BRE MAURITIUS INVESTMENTS II	S	6611344	355.10
15-Sep-21	EMBASSY	SG INDIAN HOLDING NQ CO I PTE LIMITED	S	7035212	355.18
15-Sep-21	EMBASSY	STICHTING DEPOSITARY APG TACTICAL REAL ESTATE POOL	B	4,250,000	355.10
15-Sep-21	EMBASSY	AMERICAN FUNDS GLOBAL BALANCED FUND	B	5,000,000	355.10
15-Sep-21	EMBASSY	BNP PARIBAS ARBITRAGE	B	5,526,435	355.11
15-Sep-21	INOXWIND	INOX WIND ENERGY LIMITED	S	1,385,812	105.22

Note- Executed on 15th Sep 2021. Bulk Deal Buy/Sell done by fund house is considered

Research Analyst Registration No.

INH000002764

Contact

SMS: 'Arihant' to 56677

Website

www.arihantcapital.com

mail Id

arihant.research@arihantcapital.com

**Arihant is Forbes Asia's '200 Best under a \$Billion' Company
'Best Emerging Commodities Broker' awarded by UTV Bloomberg**

Disclaimer: This document has been prepared by Arihant Capital Markets Limited (hereinafter called as Arihant) and its subsidiaries and associated companies. This document does not constitute an offer or solicitation for the purchase and sale of any financial instrument by Arihant. Receipt and review of this document constitutes your agreement not to circulate, redistribute, retransmit or disclose to others the contents, opinions, conclusion, or information contained herein. This document has been prepared and issued on the basis of publicly available information, internally developed data and other sources believed to be reliable. Whilst meticulous care has been taken to ensure that the facts stated are accurate and opinions given are fair and reasonable, neither the analyst nor any employee of our company is in any way is responsible for its contents and nor is its accuracy or completeness guaranteed. This document is prepared for assistance only and is not intended to be and must not alone be taken as the basis for an investment decision. All recipients of this material should before dealing and or transacting in any of the products referred to in this material make their own investigation, seek appropriate professional advice. The investments discussed in this material may not be suitable for all investors. The recipient alone shall be fully responsible/are liable for any decision taken on the basis of this material. Arihant Capital Markets Ltd (including its affiliates) or its officers, directors, personnel and employees, including persons involved in the preparation or issuance of this material may; (a) from time to time, have positions in, and buy or sell or (b) be engaged in any other transaction and earn brokerage or other compensation in the financial instruments/products discussed herein or act as advisor or lender/borrower in respect of such securities/financial instruments/products or have other potential conflict of interest with respect to any recommendation and related information and opinions. The said persons may have acted upon and/or in a manner contradictory with the information contained here and may have a position or be otherwise interested in the investment referred to in this document before its publication. The user of this report assumes the entire risk of any use made of this data/report. Arihant especially states that it has no financial liability, whatsoever, to the users of this report.

Arihant Capital Markets Ltd

#1011 Solitaire Corporate Park Building No.10 1st Floor
Andheri Ghatkopar Link Road Chakala Andheri (E) Mumbai-400093
T. 022-42254800. Fax: 022-42254880
www.arihantcapital.com