

To join our research group on TELEGRAM, please click on the links - <https://bit.ly/37T17JR> and <https://bit.ly/2svtU7k>

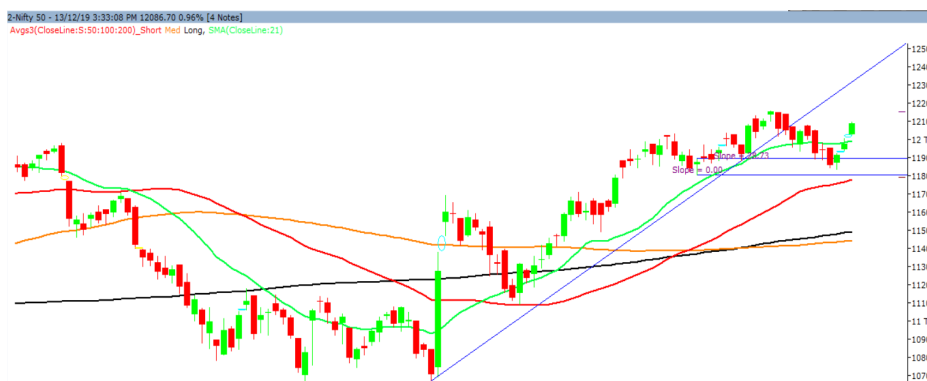
Monday, 16th December, 2019

Indian Indices	Last Price	(%) Chg
BSE	41009.71	1.05
NSE	12086.70	0.96
World Indices		
Dow Jones	28135.38	0.01
Nasdaq	8734.88	0.20
Nikkei	24018.52	2.55
Hang Seng	27560.96	-0.47
FTSE	7353.44	1.10
Commodity	Last Price	(%) Chg
GOLD(\$/ounce)	1479.30	-0.13
Silver (\$/Ounce)	16.99	-0.13
Crude (\$/BBL)	64.99	-0.35
Aluminium spot (\$/mt)	1766.00	0.04
Copper SPOT (\$/mt)	6149.75	0.14
Lead Spot (\$/MT)	1899.25	-0.43
Natural gas \$/MMBtu	2.31	0.57
Currency	Last Price	(%) Chg
USD-INR	70.91	0.00
EUR-INR	79.36	0.49
Bond	Last Price	(%) Chg
India 10 Yr Bond yield	6.78	0.21

52 Wk High (A group)			52 Wk Low (A group)		
Company	Close Price	52 Wk High	Company	Close Price	52 Wk Low
CRISIL	1717	1728	CYIENT	389	381
DIVISL	1839	1847	DHFL	14	13
DLF	228	231	--	--	--
HDFC	2352	2365	--	--	--
SRF	3302	3338	--	--	--

Source: BSE

Market Technical Outlook



Nifty opened up with a gap and traded with positive bias throughout the day to close in green. On the daily chart, we are observing two consecutive upward gaps which suggest that the undertone in the market has turned positive. Further, we are also observing that prices have closed convincingly above 21-day SMA. Hence momentum on the upside is likely to continue.

In coming trading session if Nifty open in the range of 12068 – 12055 levels then go long, with a stop loss of 12045 for a target of 12103 – 12132 – 12161 levels.

News for stocks

AU SMALL FINANCE BANK	Singapore's state investment arm Temasek, has completed the acquisition of 4.8% stake in AU Small Finance Bank Ltd by infusing the balance Rs 525 cr of its Rs 1,000 cr investment plan.
SBI	State Bank of India is set to get about Rs 12,161 crore as the largest acquisition of Essar Steel gets through the three-year-old Insolvency and Bankruptcy Code (IBC).
SUN PHARMA	US FDA issues form 483 with 8 observations to Sun Pharma's Halol facility; co says the drug regulator conducted a GMP inspection of the Halol facility from December 3-13.

Foreign Institutional Investments (FII's) Activities

Name of Segment	Net Buyer/seller	Rs In Cr
Index Futures	Net Buy	1043.82
Stock Futures	Net Buy	261.33
Net Future Position	Net Buy	1305.15
Index Options	Net Buy	173.58
Stock Options	Net Buy	2.26
Net Options Position	Net Buy	175.84
FII In cash Segment	Net Buy	115.70
DII In cash Segment	Net Buy	384.92
Net Cash Position	Net Buy	500.62

Technical Levels for Nifty 50 Companies

Company	Closing 13-12-2019	Buy/Sell Trigger	Resistance 1	Resistance 2	Support 1	Support 2
ADANI PORTS	376.95	376.80	381.05	385.15	372.70	368.45
ASIAN PAINT	1743.95	1745.73	1755.92	1767.88	1733.77	1723.58
AXIS BANK	752.00	743.95	762.90	773.80	733.05	714.10
BAJAJ-AUTO	3232.90	3242.68	3265.12	3297.33	3210.47	3188.03
BAJAJ FINSV	9210.30	9209.12	9276.08	9341.87	9143.33	9076.37
BAJ FINANCE	4071.95	4067.43	4093.77	4115.58	4045.62	4019.28
BHARTIARTL	427.80	431.50	437.00	446.20	422.30	416.80
BPCL	496.75	494.58	502.97	509.18	488.37	479.98
BRITANNIA	3054.40	3061.80	3088.60	3122.80	3027.60	3000.80
CIPLA	461.25	460.95	465.30	469.35	456.90	452.55
COALINDIA	196.25	194.82	198.33	200.42	192.73	189.22
DRREDDY	2821.50	2820.05	2867.10	2912.70	2774.45	2727.40
EICHERMOT	22034.75	22110.17	22383.58	22732.42	21761.33	21487.92
GAIL	119.80	119.70	121.00	122.20	118.50	117.20
GRASIM	782.30	781.55	788.35	794.40	775.50	768.70
HCLTECH	543.15	541.65	546.50	549.85	538.30	533.45
HDFC	2354.50	2346.18	2374.27	2394.03	2326.42	2298.33
HDFC BANK	1263.85	1265.15	1271.05	1278.25	1257.95	1252.05
HEROMOTOCO	2338.15	2339.12	2358.03	2377.92	2319.23	2300.32
HINDALCO	208.25	207.52	209.73	211.22	206.03	203.82
HINDUNILVR	2006.20	2010.07	2020.13	2034.07	1996.13	1986.07
ICICIBANK	537.05	538.52	541.33	545.62	534.23	531.42
INDUSINDBK	1485.40	1476.37	1502.98	1520.57	1458.78	1432.17
INFRA TEL	252.40	251.63	257.22	262.03	246.82	241.23
INFY	711.30	708.18	716.02	720.73	703.47	695.63
IOC	128.25	128.52	129.43	130.62	127.33	126.42
ITC	241.60	241.10	243.00	244.40	239.70	237.80
JSWSTEEL	257.60	259.18	262.82	268.03	253.97	250.33
KOTAK BANK	1692.75	1699.67	1712.08	1731.42	1680.33	1667.92
LT	1305.30	1299.53	1313.77	1322.23	1291.07	1276.83
M&M	516.20	517.58	521.42	526.63	512.37	508.53
MARUTI	7214.95	7164.70	7299.25	7383.55	7080.40	6945.85
NESTLEIND	14301.60	14234.03	14457.07	14612.53	14078.57	13855.53
NTPC	115.65	115.43	116.37	117.08	114.72	113.78
ONGC	126.50	126.65	127.30	128.10	125.85	125.20
POWERGRID	185.70	186.08	187.17	188.63	184.62	183.53
RELIANCE	1582.90	1581.77	1591.13	1599.37	1573.53	1564.17
SBIN	332.55	330.33	335.67	338.78	327.22	321.88
SUNPHARMA	439.25	435.58	445.57	451.88	429.27	419.28
TATAMOTORS	176.70	178.72	181.93	187.17	173.48	170.27
TATASTEEL	428.40	428.82	434.18	439.97	423.03	417.67
TCS	2071.25	2051.88	2096.77	2122.28	2026.37	1981.48
TECHM	761.85	758.02	767.78	773.72	752.08	742.32
TITAN	1186.15	1190.75	1198.90	1211.65	1178.00	1169.85
ULTRACEMCO	4082.60	4057.87	4116.23	4149.87	4024.23	3965.87
UPL	565.00	568.87	574.23	583.47	559.63	554.27
VEDL	149.40	149.23	150.87	152.33	147.77	146.13
WIPRO	243.85	242.90	245.80	247.75	240.95	238.05
YES BANK	46.65	46.57	47.73	48.82	45.48	44.32
ZEEL	279.70	281.32	284.63	289.57	276.38	273.07

(Source – IRIS)

Guru Call: From the expert's desk

Company	Reco Date	Reco Price (Buy on dips)	High till date	Return%
Aditya Birla Capital	22-Nov-19	95.75	114.60	19.69%
Asian Paints Ltd.	30-Mar-17	1068.10	1834.80	71.78%
Avenue Supermarts Ltd.	31-Jul-17	898.55	2010.00	123.69%
Axis Bank Ltd.	10-Apr-18	519.30	827.75	59.40%
Bajaj Finance Ltd.	11-Oct-18	2271.00	4280.00	88.46%
Bajaj Finserv Ltd	1-Nov-16	3416.80	9284.75	171.74%
Bajaj Holdings And Investment Ltd	19-May-16	1499.10	3903.95	160.42%
Bandhan Bank Ltd.	19-Dec-18	556.40	650.00	16.82%
Bharat Petroleum Corporation Ltd.	23-Oct-19	531.50	549.00	3.29%
Century Textile and Industries Ltd	25-Nov-16	326.00	515.10	58.01%
Cipla Ltd	20-Mar-17	597.30	678.45	13.59%
Colgate Palmolive	16-Sep-19	1314.00	1642.60	25.01%
Container Corporation	22-Nov-19	577.00	603.00	4.51%
Dabur India	22-Oct-19	466.00	487.70	4.66%
DLF Ltd	10-Apr-19	194.30	231.20	18.99%
Emami Limited	26-Jun-19	290.35	355.40	22.40%
Godrej Industries Ltd.	12-Feb-18	550.70	657.60	19.41%
Godrej Properties Ltd.	19-Dec-18	685.30	1119.60	63.37%
Grasim Industries Ltd.	31-May-17	1132.50	1331.00	17.53%
Havells India Ltd.	8-Dec-17	525.75	806.85	53.47%
Housing Development Finance Corp Ltd	19-Dec-17	1720.00	2365.95	37.56%
HDFC Asset Management Company Ltd.	19-Dec-18	1572.90	3844.00	144.39%
HDFC Bank Limited	10-Nov-16	639.00	1287.00	101.41%
HDFC Life Insurance Co Ltd	19-Jan-18	485.05	646.40	33.26%
Hindustan Unilever Ltd.	13-Nov-17	1290.70	2190.00	69.68%
ICICI Bank Ltd.	6-Apr-18	278.65	542.80	94.80%
ICICI Prudential Life Insurance Company Ltd.	28-Jun-18	375.80	537.30	42.97%
ICICI Lombard General Insurance	19-Sep-19	1154.90	1399.75	21.20%
Infosys Ltd.	17-Aug-17	487.60	847.00	73.71%
Kotak Mahindra Bank Ltd	10-Nov-16	822.10	1720.00	109.22%
Mahindra & Mahindra Ltd.	5-Jun-17	709.25	993.00	40.01%
Manappuram Finance Ltd.	24-Apr-18	119.20	174.65	46.52%
Mahanagar Gas	15-Nov-19	1029.00	1064.00	3.40%
Marico Ltd.	4-Apr-18	325.00	404.00	24.31%
Nestle India Ltd.	27-Sep-18	9729.40	15146.90	55.68%
Oberoi Realty Ltd.	23-Nov-17	508.60	641.70	26.17%
Phoenix Mills Limited	7-Jul-19	655.15	797.00	21.65%
Pidilite Industries Limited	4-Oct-16	681.60	1493.50	119.12%
Prestige Estates Projects Limited	6-Jun-19	286.70	363.90	26.93%
Reliance Nippon	25-Nov-18	377.00	386.40	2.49%
Rites Ltd.	19-Dec-18	226.96	324.80	43.11%
RBL Bank	22-Nov-19	334.00	391.20	17.13%
State Bank Of India	28-Aug-18	308.00	373.80	21.36%
Shipping Corporation	22-Nov-19	64.00	65.95	3.05%
Tata Global Beverages Ltd.	29-Jun-17	149.15	303.05	103.18%
Tata Consultancy Services Ltd.	8-Jan-18	1344.60	2296.20	70.77%
Trent Ltd.	19-Dec-18	348.40	567.90	63.00%
Ultratech Cement Ltd.	19-Dec-18	4084.60	4904.95	20.08%
Voltas Ltd.	27-Mar-18	613.90	725.40	18.16%
Whirlpool Of India Ltd.	7-Dec-16	872.25	2448.00	180.65%
Zee Entertainment	22-Nov-19	345.00	362.00	4.93%

NIFTY 50 STOCKS BELOW 200SMA

SCRIP NAME	SMA 200	CLOSING (13-12-2019)
INFY	745.02	711.30
WIPRO	264.70	243.85
ZEEL	350.96	279.70
LT	1400.86	1305.30
ITC	269.76	241.60
TATASTEEL	444.49	428.40
GRASIM	806.84	782.30
CIPLA	510.00	461.25
M&M	602.20	516.20
HEROMOTOCO	2602.97	2338.15
IOC	144.16	128.25
ONGC	147.06	126.50
VEDL	159.01	149.40
UPL	601.42	565.00
GAIL	147.77	119.80
ADANI PORTS	383.89	376.95
POWERGRID	196.47	185.70
ULTRACEMCO	4240.21	4082.60
TCS	2120.78	2071.25
JSWSTEEL	257.78	257.60
NTPC	125.59	115.65
YESBANK	124.09	46.65
COALINDIA	221.59	196.25
INFRA TEL	267.21	252.40

Weekly Expiry Most Active Nifty Call Option

Symbol	Expiry Date	Strike Price	Highest Open Interest (OI)
NIFTY	19-Dec-19	12100	1181700
NIFTY	19-Dec-19	12200	1026225
NIFTY	19-Dec-19	12500	1000425

Weekly Expiry Most Active Nifty Put Option

Symbol	Expiry Date	Strike Price	Highest Open Interest (OI)
NIFTY	19-Dec-19	12000	2120700
NIFTY	19-Dec-19	11900	1623300
NIFTY	19-Dec-19	11800	1333425

Bulk Deals (NSE)

Deal Date	Scrip Name	Client Name	Deal Type	Quantity	Price
13-Dec-19	Apollo Hospitals Ltd	BIRLA MUTUAL FUND	BUY	700000	1,352.16

Bulk Deals (BSE)

N/A.

 Note- Executed on 13th Dec 2019. Bulk Deal Buy/Sell done by fund house is considered.

Securities in Ban For Trade Date 16-12-2019

YESBANK

Research Analyst Registration No.

INH000002764

Contact

SMS: 'Arihant' to 56677

Website

www.arihantcapital.com

mail Id

arihant.research@arihantcapital.com

**Arihant is Forbes Asia's '200 Best under a \$Billion' Company
'Best Emerging Commodities Broker' awarded by UTV Bloomberg**

Disclaimer: This document has been prepared by Arihant Capital Markets Limited (hereinafter called as Arihant) and its subsidiaries and associated companies. This document does not constitute an offer or solicitation for the purchase and sale of any financial instrument by Arihant. Receipt and review of this document constitutes your agreement not to circulate, redistribute, retransmit or disclose to others the contents, opinions, conclusion, or information contained herein. This document has been prepared and issued on the basis of publicly available information, internally developed data and other sources believed to be reliable. Whilst meticulous care has been taken to ensure that the facts stated are accurate and opinions given are fair and reasonable, neither the analyst nor any employee of our company is in any way is responsible for its contents and nor is its accuracy or completeness guaranteed. This document is prepared for assistance only and is not intended to be and must not alone be taken as the basis for an investment decision. All recipients of this material should before dealing and or transacting in any of the products referred to in this material make their own investigation, seek appropriate professional advice. The investments discussed in this material may not be suitable for all investors. The recipient alone shall be fully responsible/are liable for any decision taken on the basis of this material. Arihant Capital Markets Ltd (including its affiliates) or its officers, directors, personnel and employees, including persons involved in the preparation or issuance of this material may; (a) from time to time, have positions in, and buy or sell or (b) be engaged in any other transaction and earn brokerage or other compensation in the financial instruments/products discussed herein or act as advisor or lender/borrower in respect of such securities/financial instruments/products or have other potential conflict of interest with respect to any recommendation and related information and opinions. The said persons may have acted upon and/or in a manner contradictory with the information contained here and may have a position or be otherwise interested in the investment referred to in this document before its publication. The user of this report assumes the entire risk of any use made of this data/report. Arihant especially states that it has no financial liability, whatsoever, to the users of this report.

Arihant Capital Markets Ltd

#1011 Solitaire Corporate Park Building No.10 1st Floor
Andheri Ghatkopar Link Road Chakala Andheri (E) Mumbai-400093
T. 022-42254800. Fax: 022-42254880
www.arihantcapital.com