

To join our research group on TELEGRAM, please click on the links - <https://bit.ly/3HbUtQV> and <https://bit.ly/2YFpdbn>

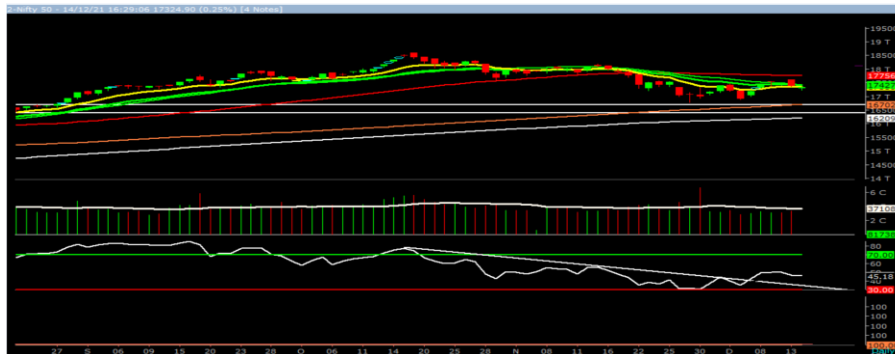
Thursday, 16<sup>th</sup> Dec 2021

Indian Indices	Last Price	(%) Chg
NSE	17221.40	-0.60
BSE	57788.03	-0.57
World Indices	Last Price	(%) Chg
Dow Jones	35927.43	1.08
Nasdaq	15565.58	2.15
Nikkei	28904.50	1.56
Hang Seng	23270.35	-0.64
FTSE	7170.75	-0.66
Commodity	Last Price	(%) Chg
GOLD(\$/ounce)	1782.20	1.00
Silver (\$/Ounce)	22.14	2.74
Crude (\$/BBL)	74.54	0.89
Aluminium spot (\$/mt)	2622.25	0.89
Copper SPOT (\$/mt)	9381.00	0.95
Lead Spot (\$/MT)	2290.00	-0.35
Natural gas \$/MMBtu	3.86	1.47
Currency	Last Price	(%) Chg
USD-INR	76.39	0.58
EUR-INR	86.03	0.11
Bond	Last Price	(%) Chg
India 10 Yr Bond yield	6.36	0.009

52 Wk High (A group)			52 Wk Low (A group)		
Company	Close Price	52 Wk High	Company	Close Price	52 Wk Low
ADANIGAS	1932	1955	--	--	--
TORENTP	600	606	--	--	--
CGPOWER	185	190	--	--	--
ZEEL	367	378	--	--	--
SKFINDIA	4133	4236	--	--	--

Source: BSE

### Market Technical Outlook



Nifty opened on a subdued note but witnessed selling in the final hour of the trade which led nifty to close in red. On the daily chart, we are observing a bear candle which suggests that markets are cautious at higher level. In coming trading session if nifty for first hour trades below 17192 level then it may test 17080 – 17000 levels. On the upside, 17340 – 17420 levels may act as resistance for the day.

**We still continue to maintain our stance that on 7<sup>th</sup> Dec-21 Nifty closes in green with higher volumes. Hence, we are of the opinion that the low of 16782 made on 7<sup>th</sup>-Dec - 21 may be an intermediate bottom. Hence cautiously positive approach at current level should be adopted.**

### Foreign Institutional Investments (FII's) Activities

Name of Segment	Net Buyer/seller	Rs In Cr
Index Futures	Net Sell	-415.72
Stock Futures	Net Sell	-1775.49
<b>Net Future Position</b>	<b>Net Sell</b>	<b>-2191.21</b>
Index Options	Net Buy	7544.93
Stock Options	Net Sell	-27.30
<b>Net Options Position</b>	<b>Net Buy</b>	<b>7517.63</b>
FII In cash Segment	Net Sell	-3407.04
DII In cash Segment	Net Buy	1553.01
<b>Net Cash Position</b>	<b>Net Sell</b>	<b>-1854.03</b>

**Guru Call: From the expert's desk**

Company	Reco Date	Reco Price (Buy on dips)	High till date	Return%
Accelya Solutions India Ltd	10-Jun-21	1203.90	1539.40	27.87%
Aditya Birla Capital Ltd	13-Aug-21	206.60	210.95	2.11%
Aditya Birla Fashion and Retail Ltd	08-Feb-21	164.40	231.65	40.91%
Alkem	08-Jul-20	2427.00	3558.90	46.64%
Apcotex Industries Limited	13-Aug-21	342.90	350.05	2.09%
Asian Paints Ltd.	30-Mar-17	1068.10	3179.50	197.68%
Astec LifeSciences Limited	09-Jul-21	1360.70	1487.00	9.28%
Avenue Supermarts Ltd.	31-Jul-17	898.55	3448.95	283.84%
Axis Bank Ltd.	10-Apr-18	519.30	827.75	59.40%
Bajaj Finserv Ltd	1-Nov-16	3416.80	13110.00	283.69%
Bajaj Holdings And Investment Ltd	19-May-16	1499.10	4060.00	170.83%
Birla Corporation Limited	28-Jun-21	1240.00	1450.80	17.00%
Britannia	12-June-20	3366.00	4010.00	19.13%
Cadila	03-Apr-20	274.00	673.70	145.88%
CAMS	08-Oct-20	1334.90	3740.65	180.22%
CDSL	17-Sep-20	485.90	1579.00	224.96%
Century Textile and Industries Ltd	25-Nov-16	750.40	1471.20	96.06%
CESC Ltd	08-Jun-21	758.20	870.90	14.86%
CG Power and Industrial Solutions Ltd	10-Feb-21	45.25	91.95	103.20%
Chola finance	25-Sep-20	238.70	600.95	151.76%
Chola Holding	23-Sep-20	391.80	711.00	81.47%
Cipla Ltd	20-Mar-17	597.30	997.00	66.92%
Colgate Palmolive	16-Sep-19	1314.00	1794.85	36.59%
Dabur India	22-Oct-19	466.00	605.00	29.83%
DFM Foods Ltd	03-Feb-21	409.05	453.80	10.94%
DLF Ltd	10-Apr-19	194.30	338.80	74.37%
Dr Reddy	04-Aug-20	4530.00	5614.60	23.94%
Emami Limited	26-Jun-19	290.35	578.50	99.24%
Finolex Cables Ltd	08-Feb-21	368.80	557.70	51.22%
Firstsource Solutions Ltd	13-Aug-21	201.10	209.35	4.10%
Fortis	14-Jul-20	127.00	253.90	99.92%
Gati Ltd	13-Aug-21	148.90	154.20	3.56%
Gillette India Limited	11-Jun-21	5847.00	6249.00	6.88%
Glaxosmithkline Pharmaceuticals Ltd	27-Aug-20	1455.75	1807.50	24.16%
Godrej Consumer Products Limited	16-Jun-20	634.00	980.70	54.68%
HDFC Asset Management Company Ltd.	19-Dec-18	1572.90	3844.00	144.39%
HDFC Bank Limited	10-Nov-16	639.00	1641.00	156.81%
HDFC Life Insurance Co Ltd	19-Jan-18	485.05	746.00	53.80%
Hero Motocorp Ltd	29-Sep-20	3174.95	3629.05	14.30%
Hindustan Unilever Ltd.	13-Nov-17	1290.70	2614.30	102.55%
Housing Development Finance Corp Ltd	19-Dec-17	1720.00	2896.00	68.37%
ICICI Bank Ltd.	06-Apr-18	278.65	679.40	143.82%
ICICI Lombard General Insurance	19-Sep-19	1154.90	1626.45	40.83%
ICICI Prudential Life Insurance Company Ltd.	28-Jun-18	375.80	660.20	75.68%
ICICI Securities Ltd	24-Sep-20	466.65	802.00	71.86%
Indusindbnk	08-Jun-20	451.00	1119.50	148.23%
Infosys Ltd.	17-Aug-17	487.60	1596.85	227.49%
INOX Leisure Ltd	13-Aug-21	327.80	332.70	1.49%
Ion Exchange (India) Ltd	01-June-21	1464.95	2947.00	101.17%
Jubilant Ingrevia Ltd	22-Jul-21	623.00	640.00	2.73%
Kotak Mahindra Bank Ltd	10-Nov-16	822.10	2049.00	149.24%
L&T Finance Holdings Ltd	03-Dec-20	84.05	113.40	34.92%



**NIFTY 50 STOCKS BELOW 200SMA**

SCRIP NAME	SMA 200	CLOSING (15-12-2021)
HINDUNILVR	2441.41	2320.95
TATASTEEL	1161.42	1154.05
DRREDDY	4898.61	4600.3
CIPLA	910.41	895.7
TATACONSUM	746.78	746.3
BPCL	443.37	384.3
HDFCBANK	1516.93	1500
HEROMOTOCO	2864.74	2507.15
BRITANNIA	3645.8	3541.6
AXISBANK	739.62	712.5
SHREECEM	28114.87	26251.3
EICHERMOT	2626.34	2493.35
INDUSINDBK	1018.67	938.55
BAJAJ-AUTO	3813.59	3294.5
COALINDIA	151.04	148.1
HDFCLIFE	694.01	672.85
--	--	--

**Weekly Expiry Most Active Nifty Call Option**

Symbol	Expiry Date	Strike Price	Highest Open Interest (Contracts)
NIFTY	16-Dec-2021	17500	1,62,153
NIFTY	16-Dec-2021	17600	1,54,082
NIFTY	16-Dec-2021	17300	1,31,112

**Weekly Expiry Most Active Nifty Put Option**

Symbol	Expiry Date	Strike Price	Highest Open Interest (Contracts)
NIFTY	16-Dec-2021	17000	90,893
NIFTY	16-Dec-2021	16800	66,288
NIFTY	16-Dec-2021	16900	64,595

**Securities in Ban For Trade Date 16-12-2021**

ESCORTS, IBULHSGFIN, IDEA.

**Bulk Deals (NSE)**

Deal Date	Scrip Name	Client Name	Deal Type	Quantity	Price
15-Dec-21	ANSALHSG	HOUSING DEVELOPMENT FINANCE CORPORATION LIMITED	SELL	2150000	13.94

**Bulk Deals (BSE)**

N/A

Note- Executed on 15<sup>th</sup> Dec 2021. Bulk Deal Buy/Sell done by fund house is considered

Research Analyst Registration No.	Contact	Website	mail Id
INH000002764	SMS: 'Arihant' to 56677	<a href="http://www.arihantcapital.com">www.arihantcapital.com</a>	<a href="mailto:arihant.research@arihantcapital.com">arihant.research@arihantcapital.com</a>

**Arihant is Forbes Asia's '200 Best under a \$Billion' Company  
'Best Emerging Commodities Broker' awarded by UTV Bloomberg**

**Disclaimer:** This document has been prepared by Arihant Capital Markets Limited (hereinafter called as Arihant) and its subsidiaries and associated companies. This document does not constitute an offer or solicitation for the purchase and sale of any financial instrument by Arihant. Receipt and review of this document constitutes your agreement not to circulate, redistribute, retransmit or disclose to others the contents, opinions, conclusion, or information contained herein. This document has been prepared and issued on the basis of publicly available information, internally developed data and other sources believed to be reliable. Whilst meticulous care has been taken to ensure that the facts stated are accurate and opinions given are fair and reasonable, neither the analyst nor any employee of our company is in any way is responsible for its contents and nor is its accuracy or completeness guaranteed. This document is prepared for assistance only and is not intended to be and must not alone be taken as the basis for an investment decision. All recipients of this material should before dealing and or transacting in any of the products referred to in this material make their own investigation, seek appropriate professional advice. The investments discussed in this material may not be suitable for all investors. The recipient alone shall be fully responsible/are liable for any decision taken on the basis of this material. Arihant Capital Markets Ltd (including its affiliates) or its officers, directors, personnel and employees, including persons involved in the preparation or issuance of this material may; (a) from time to time, have positions in, and buy or sell or (b) be engaged in any other transaction and earn brokerage or other compensation in the financial instruments/products discussed herein or act as advisor or lender/borrower in respect of such securities/financial instruments/products or have other potential conflict of interest with respect to any recommendation and related information and opinions. The said persons may have acted upon and/or in a manner contradictory with the information contained here and may have a position or be otherwise interested in the investment referred to in this document before its publication. The user of this report assumes the entire risk of any use made of this data/report. Arihant especially states that it has no financial liability, whatsoever, to the users of this report.

**Arihant Capital Markets Ltd**

#1011 Solitaire Corporate Park Building No.10 1<sup>st</sup> Floor  
 Andheri Ghatkopar Link Road Chakala Andheri (E) Mumbai-400093  
 T. 022-42254800. Fax: 022-42254880  
[www.arihantcapital.com](http://www.arihantcapital.com)