

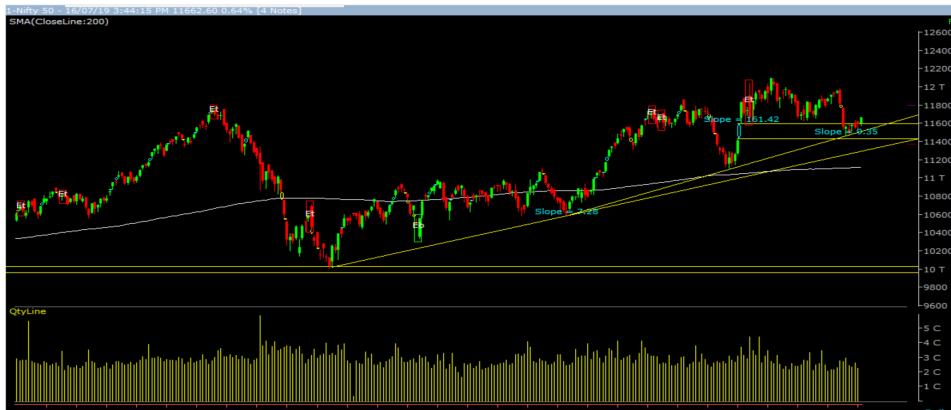
Wednesday, 17<sup>th</sup> July, 2019

Indian Indices	Last Price	(%) Chg
BSE	391313.04	0.18
NSE	11661.05	0.63
World Indices	Last Price	(%) Chg
Dow Jones	27335.63	-0.09
Nasdaq	8222.80	-0.43
Nikkei	21448.18	-0.40
Hang Seng	28506.05	-0.39
FTSE	7577.20	0.60
Commodity	Last Price	(%) Chg
GOLD(\$/ounce)	1406.60	-0.33
Silver (\$/Ounce)	15.64	-0.21
Crude (\$/BBL)	64.51	0.25
Aluminium spot (\$/mt)	1845.75	0.14
Copper SPOT (\$/mt)	5968.25	0.15
Lead Spot (\$/MT)	1984.75	0.24
Natural gas \$/MMBtu	2.32	0.65
Currency	Last Price	(%) Chg
USD-INR	68.71	0.25
EUR-INR	77.14	-0.20
Bond	Last Price	(%) Chg
India 10 Yr Bond yield	6.33	-1.55

52 Wk High (A group)			52 Wk Low (A group)		
Company	Close Price	52 Wk High	Company	Close Price	52 Wk Low
GSPL	211	213	BLUEDAR	2380	2378
INFY	784	787	DHFL	50	44
INTELLECT	283	292	GNFC	224	224
SOBHA	571	587	TATAELX	814	804
TORNTPO	310	313	--	--	--

Source: BSE

### Market Technical Outlook



Nifty opened on a subdued note but momentum on the upside intensified as the day progressed which led the indices to close in green. On the daily chart we are observing a positive candle which suggests that momentum on the upside is likely to continue. On the upside, 11712 level is major resistance. This coincide with the 50-daySMA. Hence, if Nifty opens higher then we could see some profit booking. However if its opens lower then traders may get opportunity to go long in Nifty.

**Outlook:** Hence, in coming trading session if Nifty opens lower in the range of 11638 to 11623 levels then again traders can go long, with a stop loss of 11580. On the upside it may test 11705 – 11735 levels.

### News for stocks under our Fundamental coverage

<b>DCB BANK</b>	Private sector lender DCB Bank has reported a 17 per cent year-on-year (YoY) growth in net profit at Rs 81.10 crore during the quarter ended June 30, 2019. The bank's net interest income (NII), rose 12 per cent to Rs 304.70 crore in Q1FY20.
<b>FEDERAL BANK</b>	Private sector lender Federal Bank on Tuesday reported a net profit of Rs 384 crore in the June quarter of FY20, 46% higher than the same period last year, owing to higher other income and net interest income.

### Foreign Institutional Investments (FIIs) Activities

Name of Segment	Net Buyer/seller	Rs In Cr
Index Futures	Net Sell	-53.29
Stock Futures	Net Buy	439.08
<b>Net Future Position</b>	<b>Net Buy</b>	<b>385.79</b>
Index Options	Net Buy	523.26
Stock Options	Net Buy	95.23
<b>Net Options Position</b>	<b>Net Buy</b>	<b>618.49</b>
FII In cash Segment	Net Sell	-444.99
DII In cash Segment	Net Buy	637.71
<b>Net Cash Position</b>	<b>Net Buy</b>	<b>192.72</b>

**Technical Levels for Nifty 50 Companies**

Company	Closing 16-07-2019	Buy/Sell Trigger	Resistance 1	Resistance 2	Support 1	Support 2
ADANI PORTS	418	416	424	429	410	402
ASIAN PAINT	1372	1364	1383	1394	1353	1334
AXIS BANK	761	757	767	773	751	742
BAJAJ-AUTO	2732	2718	2759	2785	2692	2651
BAJAJ FINSV	7882	7828	7954	8026	7756	7630
BAJ FINANCE	3449	3440	3474	3499	3415	3381
BHARTIARTL	351	352	354	357	349	346
BPCL	354	353	358	361	350	345
CIPLA	2747	2754	2770	2793	2731	2715
COALINDIA	554	554	558	563	549	545
DRREDDY	233	232	235	236	230	228
EICHER MOT	2677	2655	2706	2735	2625	2574
GAIL	19041	18932	19209	19378	18764	18486
GRASIM	147	147	149	150	145	144
HCLTECH	931	929	939	948	920	910
HDFC	1020	1022	1030	1040	1011	1003
HDFC BANK	2278	2273	2289	2301	2261	2245
HEROMOTOCO	2391	2397	2412	2433	2376	2361
HINDALCO	2544	2534	2580	2616	2498	2451
HINDPETRO	199	200	202	205	197	195
HINDUNILVR	1741	1735	1757	1773	1719	1697
IBULHSGFIN	646	637	661	675	623	599
ICICIBANK	425	426	430	435	421	417
INDUSINDBK	1473	1473	1485	1498	1461	1448
INFRA TEL	264	263	265	267	262	260
INFY	785	783	790	795	778	771
IOC	147	147	148	149	146	144
ITC	272	272	273	274	271	270
JSWSTEEL	274	273	276	279	270	267
KOTAK BANK	1501	1501	1512	1522	1490	1479
LT	1461	1451	1475	1488	1437	1414
M&M	623	623	628	632	619	614
MARUTI	6158	6129	6201	6245	6085	6013
NTPC	131	130	132	134	129	127
ONGC	152	152	154	156	151	149
POWERGRID	209	208	211	213	206	202
RELIANCE	1293	1288	1300	1306	1282	1270
SBIN	364	363	368	371	359	354
SUNPHARMA	433	429	439	445	423	413
TATAMOTORS	170	167	174	179	162	155
TATASTEEL	477	473	482	488	468	459
TCS	2106	2113	2126	2145	2093	2080
TECHM	676	676	682	687	670	665
TITAN	1115	1105	1128	1141	1092	1070
ULTRACEMCO	4601	4595	4621	4641	4575	4549
UPL	642	639	648	655	633	624
VEDL	167	168	169	172	165	164
WIPRO	260	260	263	266	257	253
YES BANK	104	101	109	115	95	87
ZEEL	346	346	353	360	339	333

(Source – IRIS)

**Guru Call: From the expert's desk**

Company	Reco Date	Reco Price (Buy on dips)	High till date	Return%
Asian Paints Ltd.	30-Mar-17	1068.1	1529	43.15%
Avenue Supermarts Ltd.	31-Jul-17	898.55	1699	89.08%
Axis Bank Ltd.	10-Apr-18	519.3	827.75	59.40%
Bajaj Finance Ltd.	11-Oct-18	2271	3693.25	62.63%
Bajaj Finserv Ltd	1-Nov-16	3416.8	8557.85	150.46%
Bajaj Holdings And Investment Ltd	19-May-16	1499.1	3800	153.49%
Bandhan Bank Ltd.	19-Dec-18	556.4	636	14.31%
Century Textile and Industries Ltd	25-Nov-16	739.3	1471	98.97%
Cipla Ltd	20-Mar-17	597.3	678.5	13.59%
DLF Ltd	10-Apr-18	194.3	202.65	4.30%
Emami Limited	26-Jun-19	290.35	326	12.28%
Godrej Industries Ltd.	12-Feb-18	550.7	657.6	19.41%
Godrej Properties Ltd.	19-Dec-18	685.3	1014.8	48.08%
Grasim Industries Ltd.	31-May-17	1132.5	1331	17.53%
Havells India Ltd.	8-Dec-17	525.75	806.85	53.47%
Housing Development Finance Corp Ltd	19-Dec-17	1720	2235	29.94%
HDFC Asset Management Company Ltd.	19-Dec-18	1572.9	2070	31.60%
HDFC Bank Limited	10-Nov-16	1251.3	2494.5	99.35%
HDFC Life Insurance Co Ltd	19-Jan-18	485.05	548.3	13.04%
Hindustan Unilever Ltd.	13-Nov-17	1290.7	1870	44.88%
ICICI Bank Ltd.	6-Apr-18	278.65	443.9	59.30%
ICICI Prudential Life Insurance Company Ltd.	28-Jun-18	375.8	428	13.89%
Infosys Ltd.	17-Aug-17	487.6	773	58.53%
Kotak Mahindra Bank Ltd	10-Nov-16	822.1	1555	89.15%
Mahindra & Mahindra Ltd.	5-Jun-17	709.25	993	40.01%
Manappuram Finance Ltd.	24-Apr-18	119.2	144.95	21.60%
Marico Ltd.	4-Apr-18	325	396.6	22.03%
Nestle India Ltd.	27-Sep-18	9729.4	11950	22.82%
Oberoi Realty Ltd.	23-Nov-17	508.6	621.7	22.24%
Phoenix Mills Limited	7-July-19	655.15	660	0.07%
Pidilite Industries Limited	4-Oct-16	681.6	1313	92.63%
Prestige Estates Projects Limited	6-Jun-18	286.7	283.5	-1.12%
Rites Ltd.	19-Dec-18	283.7	301.4	6.24%
State Bank Of India	28-Aug-18	308	365	18.51%
Tata Global Beverages Ltd.	29-Jun-17	149.15	328.8	120.45%
Tata Consultancy Services Ltd.	8-Jan-18	1344.6	2292	70.46%
Trent Ltd.	19-Dec-18	348.4	449.05	28.89%
Ultratech Cement Ltd.	19-Dec-18	4084.6	4904	20.06%
Voltas Ltd.	27-Mar-18	613.9	658.4	7.25%
Whirlpool Of India Ltd.	7-Dec-16	872.25	1955	124.13%

**NIFTY 50 STOCKS BELOW 200SMA**

SCRIP NAME	SMA 200	CLOSING (16-07-2019)
WIPRO	264.56	260
ZEEL	417.83	346.25
ITC	285.09	271.95
HCLTECH	1038.3	1019.65
TATASTEEL	515.99	476.7
TATAMOTORS	181.3	170
M&M	700.11	622.9
HINDALCO	210.74	199.1
HEROMOTOCO	2783.95	2544.35
SUNPHARMA	462.63	433.3
BRITANNIA	2957.96	2747.15
ONGC	155.8	152.25
VEDL	185.32	166.9
GAIL	170.23	147.35
EICHERMOT	21310.97	19041.25
INDUSINDBK	1560.97	1473.2
TECHM	743.3	675.95
JSWSTEEL	299.88	273.9
MARUTI	7012.34	6158.05
YESBANK	190.27	103.85
BAJAJ-AUTO	2808.82	2732.45
COALINDIA	246.49	232.8
INFRATEL	279.31	263.7
IBULHSGFIN	753.62	646.35

**Securities in Ban For Trade Date 17-07-2019**

IDBI, RELCAPITAL, RELINFRA.

**Bulk Deals (BSE)**

N/A.

**Bulk Deals (NSE)**

N/A.

Note- Executed on 16<sup>th</sup> July 2019. Bulk Deal Buy/Sell done by fund house is considered.

## Research Analyst Registration No.

INH000002764

## Contact

SMS: 'Arihant' to 56677

## Website

[www.arihantcapital.com](http://www.arihantcapital.com)

## mail Id

[research@arihantcapital.com](mailto:research@arihantcapital.com)

**Arihant is Forbes Asia's '200 Best under a \$Billion' Company  
'Best Emerging Commodities Broker' awarded by UTV Bloomberg**

**Disclaimer:** This document has been prepared by Arihant Capital Markets Limited (hereinafter called as Arihant) and its subsidiaries and associated companies. This document does not constitute an offer or solicitation for the purchase and sale of any financial instrument by Arihant. Receipt and review of this document constitutes your agreement not to circulate, redistribute, retransmit or disclose to others the contents, opinions, conclusion, or information contained herein. This document has been prepared and issued on the basis of publicly available information, internally developed data and other sources believed to be reliable. Whilst meticulous care has been taken to ensure that the facts stated are accurate and opinions given are fair and reasonable, neither the analyst nor any employee of our company is in any way is responsible for its contents and nor is its accuracy or completeness guaranteed. This document is prepared for assistance only and is not intended to be and must not alone be taken as the basis for an investment decision. All recipients of this material should before dealing and or transacting in any of the products referred to in this material make their own investigation, seek appropriate professional advice. The investments discussed in this material may not be suitable for all investors. The recipient alone shall be fully responsible/are liable for any decision taken on the basis of this material. Arihant Capital Markets Ltd (including its affiliates) or its officers, directors, personnel and employees, including persons involved in the preparation or issuance of this material may; (a) from time to time, have positions in, and buy or sell or (b) be engaged in any other transaction and earn brokerage or other compensation in the financial instruments/products discussed herein or act as advisor or lender/borrower in respect of such securities/financial instruments/products or have other potential conflict of interest with respect to any recommendation and related information and opinions. The said persons may have acted upon and/or in a manner contradictory with the information contained here and may have a position or be otherwise interested in the investment referred to in this document before its publication. The user of this report assumes the entire risk of any use made of this data/report. Arihant especially states that it has no financial liability, whatsoever, to the users of this report.

### Arihant Capital Markets Ltd

#1011 Solitaire Corporate Park Building No.10 1<sup>st</sup> Floor  
Andheri Ghatkopar Link Road Chakala Andheri (E) Mumbai-400093  
T. 022-42254800. Fax: 022-42254880  
[www.arihantcapital.com](http://www.arihantcapital.com)