

To join our research group on TELEGRAM, please click on the links - <https://bit.ly/2CkisAK> and <https://bit.ly/3fKXKHK>

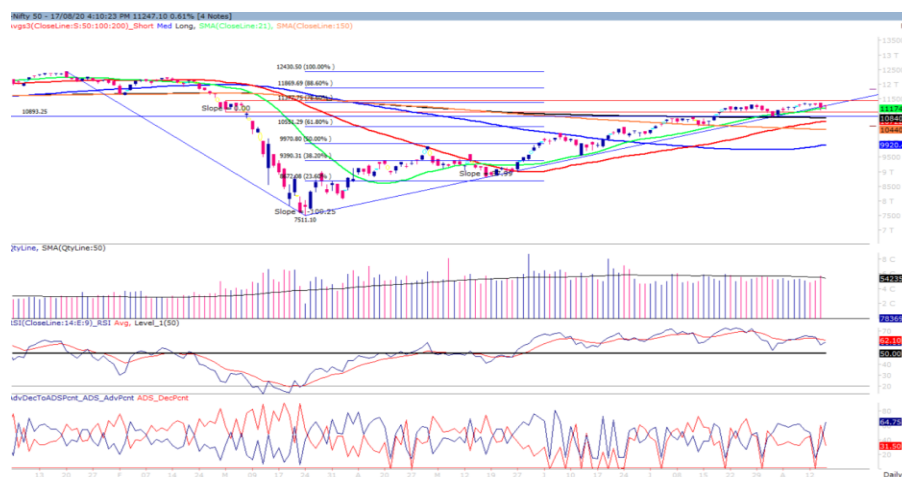
Tuesday, 18th Aug, 2020

Indian Indices	Last Price	(%) Chg
NSE	11259.40	0.72
BSE	38050.78	0.46
World Indices	Last Price	(%) Chg
Dow Jones	27844.91	-0.31
Nasdaq	11129.73	1.00
Nikkei	22959.70	-0.58
Hang Seng	25381.86	0.11
FTSE	6127.44	0.61
Commodity	Last Price	(%) Chg
GOLD(\$/ounce)	2002.80	0.21
Silver (\$/Ounce)	27.96	1.08
Crude (\$/BBL)	45.21	-0.35
Aluminium spot (\$/mt)	1761.00	0.18
Copper SPOT (\$/mt)	6469.00	0.28
Lead Spot (\$/MT)	1964.00	-0.05
Natural gas \$/MMBtu	2.32	-0.98
Currency	Last Price	(%) Chg
USD-INR	74.93	-0.11
EUR-INR	88.72	0.17
Bond	Last Price	(%) Chg
India 10 Yr Bond yield	5.97	0.18

52 Wk High (A group)			52 Wk Low (A group)		
Company	Close Price	52 Wk High	Company	Close Price	52 Wk Low
ADVANCE	216	227	--	--	--
BAJAJEL	467	473	--	--	--
BALKRISH	1310	1399	--	--	--
BSOFT	151	157	--	--	--
ECLERX	675	735	--	--	--

Source: BSE

Market Technical Outlook



Nifty opened higher traded with positive bias throughout the day to close in red. We still maintain our stance that prices are trading within the supply zone of 11036 to 11433 (shown in red in the above graph). At present, prices have marginally closed above the upward sloping trendline (shown in blue in the above graph). In coming trading session if prices trade above 11275 level then it is likely to test 11350 – 11430 levels. On the downside, 11100 – 11000 levels may act as support for the day. **We maintain our stance that Nifty is trading within the supply zone of 11036–11433. Hence cautiously positive approach should be adopted at current level as stock specific activity is likely to continue.**

Foreign Institutional Investments (FII's) Activities

Name of Segment	Net Buyer/seller	Rs In Cr
Index Futures	Net Buy	1557.56
Stock Futures	Net Sell	-102.25
Net Future Position	Net Buy	1455.31
Index Options	Net Buy	462.09
Stock Options	Net Buy	80.83
Net Options Position	Net Buy	542.92
FII In cash Segment	Net Buy	332.90
DII In cash Segment	Net Sell	-717.62
Net Cash Position	Net Sell	-384.72

Guru Call: From the expert's desk

Company	Reco Date	Reco Price (Buy on dips)	High till date	Return%
Aditya Birla Capital	22-Nov-19	95.75	115.35	20.47%
Ajanta Pharma	04-Aug-20	1661.05	1717	3.26%
Akzo Nobel	13-Jul-20	1853	1895	2.22%
Alkem	08-Jul-20	2427	2583	6.04%
Asian Paints Ltd.	30-Mar-17	1068.10	1916.70	79.45%
Avenue Supermarts Ltd.	31-Jul-17	898.55	2560.00	184.90%
Axis Bank Ltd.	10-Apr-18	519.30	827.75	59.40%
Bajaj Finance Ltd.	11-Oct-18	2271.00	4923.40	116.79%
Bajaj Finserv Ltd	1-Nov-16	3416.80	9950.00	191.21%
Bajaj Holdings And Investment Ltd	19-May-16	1499.10	3950.00	163.49%
Bajaj-Auto	12-Jun-20	2782.00	3149.00	11.65%
Bandhan Bank Ltd.	19-Dec-18	556.40	650.00	16.82%
BEL	13-Aug-20	110.00	115.00	8.69%
Bharat Petroleum Corporation Ltd.	23-Oct-19	531.50	549.00	3.29%
Bhartiartel	04-May-20	532.00	612.00	13.07%
Britannia	12-June-20	3366.00	4010.00	16.05%
Cadila	03-Apr-20	274.00	384.00	28.65%
Century Textile and Industries Ltd	25-Nov-16	326.00	656.90	101.50%
Cipla Ltd	20-Mar-17	597.30	678.45	13.59%
Colgate Palmolive	16-Sep-19	1314.00	1642.60	25.01%
Crompto Greaves Consumer	11-Jun-20	225.00	254.00	11.42%
Dabur India	22-Oct-19	466.00	525.00	12.66%
Divislab	04-Aug-20	2641.00	2716.60	2.78%
DLF Ltd	10-Apr-19	194.30	265.90	36.85%
Dr Reddy	04-Aug-20	4530.00	4664.90	2.89%
Emami Limited	26-Jun-19	290.35	357.70	23.20%
Fortis	14-Jul-20	127.00	139.00	8.63%
Galaxy Surface	01-Jul-20	1557.00	1665.00	6.49%
Goderj CP	16-Jun-20	634.00	721.00	12.07%
Godrej Industries Ltd.	12-Feb-18	550.70	657.60	19.41%
HDFC Asset Management Company Ltd.	19-Dec-18	1572.90	3844.00	144.39%
HDFC Bank Limited	10-Nov-16	639.00	1305.50	104.30%
HDFC Life Insurance Co Ltd	19-Jan-18	485.05	646.40	33.26%
Hindustan Unilever Ltd.	13-Nov-17	1290.70	2308.20	78.83%
Housing Development Finance Corp Ltd	19-Dec-17	1720.00	2499.90	45.34%
ICICI Bank Ltd.	6-Apr-18	278.65	552.20	98.17%
ICICI Lombard General Insurance	19-Sep-19	1154.90	1440.40	24.72%
ICICI Prudential Life Insurance Company Ltd.	28-Jun-18	375.80	537.30	42.97%
Indusindbnk	08-Jun-20	451.00	577.00	21.84%
Infosys Ltd.	17-Aug-17	487.60	847.00	73.71%
Ipca Lab	11-Aug-20	2099.00	2156.00	2.66%
Jk Cement	19-Jun-20	1378.00	1568.00	12.12%
JK Lakshmi Cement	03-Jul-20	276.00	305.00	9.1%
Jyoti lab	05-Aug-20	132.90	143.90	7.64%
Kansai Nerolac Paints	16-Dec-19	529.85	551.00	3.99%
Kotak Mahindra Bank Ltd	10-Nov-16	822.10	1740.00	111.65%
Mahanagar Gas	15-Nov-19	1029.00	1246.20	21.11%
Mahindra & Mahindra Ltd.	5-Jun-17	709.25	993.00	40.01%
Manappuram Finance Ltd.	24-Apr-18	119.20	194.80	63.42%
Marico Ltd.	4-Apr-18	325.00	404.00	24.31%
Nam-India	25-Nov-18	377.00	452.90	20.13%
Nestle India Ltd.	27-Sep-18	9729.40	16835.15	73.03%

Weekly Expiry Most Active Nifty Call Option

Symbol	Expiry Date	Strike Price	Highest Open Interest (OI)
NIFTY	20-Aug-2020	11500	2,579,850
NIFTY	20-Aug-2020	11400	2,406,600
NIFTY	20-Aug-2020	11300	2,192,400

Weekly Expiry Most Active Nifty Put Option

Symbol	Expiry Date	Strike Price	Highest Open Interest (OI)
NIFTY	20-Aug-2020	11000	2,759,400
NIFTY	20-Aug-2020	11200	2,280,675
NIFTY	20-Aug-2020	11100	2,279,175

Securities in Ban For Trade Date 18-08-2020

ASHOKLEY,AUROPHARMA,BATAINDIA,BHEL,GLENMARK,IDEA,JINDALSTEL,MANAPPURAM,SAIL,SUNTV,VEDL.

Bulk Deals (BSE)

Deal Date	Scrip Name	Client Name	Deal Type	Quantity	Price
17-Aug-20	CGPOWER	L&T FINANCE LIMITED	S	41293778	13.97
17-Aug-20	CGPOWER	BLUE DAIMOND PROPERTIES PRIVATE LIMITED	B	41293778	13.97
17-Aug-20	MCLEODRUSS	NIRAJ RAJNIKANT SHAH	B	1212620	17.78
17-Aug-20	MCLEODRUSS	MANJU GAGGAR	S	900000	17.78
17-Aug-20	MCLEODRUSS	INDUSIND BANK LIMITED	S	2200000	17.78

Bulk Deals (NSE)

Deal Date	Scrip Name	Client Name	Deal Type	Quantity	Price
17-Aug-20	CGPOWER	SINGULARITY HOLDINGS LIMITED	BUY	3500000	13.95
17-Aug-20	CGPOWER	L&T FINANCE LIMITED	SELL	11306222	13.94
17-Aug-20	RUSHIL	ASPIRE EMERGING FUND	SELL	75000	105.00

Note- Executed on 17th Aug 2020. Bulk Deal Buy/Sell done by fund house is considered.

Research Analyst Registration No.

INH000002764

Contact

SMS: 'Arihant' to 56677

Websitewww.arihantcapital.com**mail Id**arihant.research@arihantcapital.com

**Arihant is Forbes Asia's '200 Best under a \$Billion' Company
'Best Emerging Commodities Broker' awarded by UTV Bloomberg**

Disclaimer: This document has been prepared by Arihant Capital Markets Limited (hereinafter called as Arihant) and its subsidiaries and associated companies. This document does not constitute an offer or solicitation for the purchase and sale of any financial instrument by Arihant. Receipt and review of this document constitutes your agreement not to circulate, redistribute, retransmit or disclose to others the contents, opinions, conclusion, or information contained herein. This document has been prepared and issued on the basis of publicly available information, internally developed data and other sources believed to be reliable. Whilst meticulous care has been taken to ensure that the facts stated are accurate and opinions given are fair and reasonable, neither the analyst nor any employee of our company is in any way is responsible for its contents and nor is its accuracy or completeness guaranteed. This document is prepared for assistance only and is not intended to be and must not alone be taken as the basis for an investment decision. All recipients of this material should before dealing and or transacting in any of the products referred to in this material make their own investigation, seek appropriate professional advice. The investments discussed in this material may not be suitable for all investors. The recipient alone shall be fully responsible/are liable for any decision taken on the basis of this material. Arihant Capital Markets Ltd (including its affiliates) or its officers, directors, personnel and employees, including persons involved in the preparation or issuance of this material may; (a) from time to time, have positions in, and buy or sell or (b) be engaged in any other transaction and earn brokerage or other compensation in the financial instruments/products discussed herein or act as advisor or lender/borrower in respect of such securities/financial instruments/products or have other potential conflict of interest with respect to any recommendation and related information and opinions. The said persons may have acted upon and/or in a manner contradictory with the information contained here and may have a position or be otherwise interested in the investment referred to in this document before its publication. The user of this report assumes the entire risk of any use made of this data/report. Arihant especially states that it has no financial liability, whatsoever, to the users of this report.

Arihant Capital Markets Ltd

#1011 Solitaire Corporate Park Building No.10 1st Floor
Andheri Ghatkopar Link Road Chakala Andheri (E) Mumbai-400093
T. 022-42254800. Fax: 022-42254880
www.arihantcapital.com