

To join our research group on TELEGRAM, please click on the links - <https://bit.ly/3JTeFcc> and <https://bit.ly/3TNulgc>

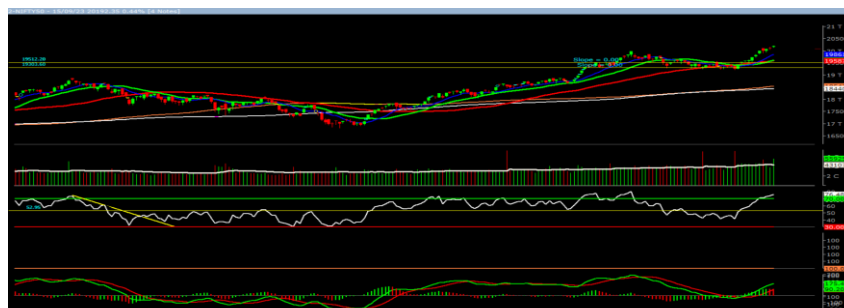
Monday, 18<sup>th</sup> Sep 2023

Indian Indices	Last Price	(%) Chg
NSE	20192.35	0.44
BSE	67838.63	0.47
World Indices	Last Price	(%) Chg
Dow Jones	34618.24	-0.83
Nasdaq	13708.33	-1.56
Nikkei	33533.09	1.07
Hang Seng	18012.39	-0.94
FTSE	7711.38	0.50
Commodity	Last Price	(%) Chg
GOLD(\$/ounce)	1949.35	0.16
Silver (\$/Ounce)	23.43	0.20
Crude (\$/BBL)	90.35	0.37
Aluminium spot (\$/mt)	2187.00	-0.36
Copper SPOT (\$/mt)	8403.00	-0.08
Zinc (\$/MT)	2512.00	0.01
Natural gas \$/MMBtu	2.63	-0.15
Currency	Last Price	(%) Chg
USDINR	83.06	0.07
EURINR	88.53	0.23
Bond		
India 10 Yr Bond yield	7.15	0.80

52 Wk High (A group)			52 Wk Low (A group)		
Company	Close Price	52 Wk High	Company	Close Price	52 Wk Low
AXISBANK	1027	1031	--	--	--
BAJAJAUTO	5145	5148	--	--	--
BANKINDIA	106	109	--	--	--
BHARTFORG	1134	1142	--	--	--
BHARTIARTL	936	948	--	--	--

Source: BSE

### Market Technical Outlook



Nifty opened higher traded with positive bias in a narrow range throughout the day to close in green. At present we are observing three consecutive "Doji" candlestick patterns with higher high. This suggests that prior uptrend is losing breath. Incoming trading session if nifty trades above 20222 level then it may test 20320– 20450 levels. On the downside, 20100 - 20000 levels may act as support for the day.

**Broadly, looking at current price action it is evident that a consolidation or a pullback from current level cannot be ruled out. Hence, one needs to adopt cautiously positive approach at current level.**

### Foreign Institutional Investments (FII's) Activities

Name of Segment	Net Buyer/seller	Rs In Cr
Index Futures	Net Buy	280.21
Stock Futures	Net Buy	5368.72
<b>Net Future Position</b>	<b>Net Buy</b>	<b>5648.93</b>
Index Options	Net Sell	-6065.6
Stock Options	Net Sell	-23.09
<b>Net Options Position</b>	<b>Net Sell</b>	<b>-6088.69</b>
FII In cash Segment	Net Buy	164.42
DII In cash Segment	Net Buy	1938.57
<b>Net Cash Position</b>	<b>Net Buy</b>	<b>2102.99</b>

**Guru Call: From the expert's desk**

Company	Reco Date	Reco Price (Buy on dips)	High till date	Return%
Adani Power	20-Apr-22	235	345	46.6%
Adani Wilmar Ltd	20-Apr-22	668	878	31.5%
Aditya Birla Capital Ltd	13-Aug-21	124	139	12.5%
Aditya Birla Fashion and Retail Ltd	8-Feb-21	164	322	95.9%
Apcotex Industries Limited	13-Aug-21	343	679	98.0%
Asian Paints Ltd.	30-Mar-17	1068	3590	236.1%
Avenue Supermarts Ltd.	31-Jul-17	899	5900	556.6%
Axis Bank Ltd.	10-Apr-18	519	867	67.0%
Bajaj Finance Ltd	20-Apr-22	7033	7295	3.7%
Bajaj Finserv Ltd	1-Nov-16	3417	19325	465.6%
Bajaj Holdings And Investment Ltd	19-May-16	1499	6598	340.1%
CDSL	17-Sep-20	486	1734	256.9%
Chola finance	25-Sep-20	239	770	222.6%
Chola Holding	23-Sep-20	392	763	94.7%
Cipla Ltd	20-Mar-17	597	1083	81.3%
Colgate Palmolive	16-Sep-19	1314	1823	38.7%
D. P. Abhushan Ltd	20-Apr-22	396	495	25.0%
Dabur India	22-Oct-19	466	659	41.4%
DLF Ltd	10-Apr-19	194	450	131.6%
Dr Reddy	4-Aug-20	4530	5615	24.0%
Emami Limited	26-Jun-19	290	622	114.2%
Finolex Cables Ltd	8-Feb-21	130	268	106.2%
Fortis	14-Jul-20	127	314	147.2%
Godawari Power	20-Apr-22	455	482	6.0%
Godrej Consumer Products Limited	16-Jun-20	634	1138	79.5%
HDFC Asset Management Company Ltd.	19-Dec-18	1573	3844	144.4%
HDFC Bank Limited	10-Nov-16	639	1725	170.0%
HDFC Life Insurance Co Ltd	19-Jan-18	485	776	60.0%
Heritage Foods Ltd	20-Apr-22	330	354	7.2%
Hero Motocorp Ltd	29-Sep-20	3175	3629	14.3%
Hindustan Unilever Ltd.	13-Nov-17	1291	2859	121.5%
Housing Development Finance Corp Ltd	19-Dec-17	1720	3365	95.6%
ICICI Bank Ltd.	6-Apr-18	279	867	211.1%
ICICI Lombard General Insurance	19-Sep-19	1155	1675	45.0%
ICICI Prudential Life Insurance Company Ltd.	28-Jun-18	376	724	92.7%
ICICI Securities Ltd	24-Sep-20	467	896	92.0%
Indusindbnk	8-Jun-20	451	1242	175.4%
Infosys Ltd.	17-Aug-17	488	1954	300.7%
Kotak Mahindra Bank Ltd	10-Nov-16	822	2253	174.1%
Linde India	20-Apr-22	3499	3649	4.3%
Marico Ltd.	4-Apr-18	325	608	87.1%
Maruti Suzuki India Ltd	13-Aug-20	5989	9050	51.1%
Oberoi Realty Ltd.	23-Nov-17	509	1052	106.8%
PEL	2-Sep-20	1246	3015	141.9%
Phoenix Mills Limited	7-Jul-19	655	1200	83.2%
Poonawalla Fincorp Ltd	13-Aug-21	175	344	96.1%
Procter & Gamble Hygiene & Health Care	13-Aug-21	12870	16466	27.9%
Raymond	25-Sep-20	264	1280	385.7%
Reliance	22-Apr-20	1351	2856	111.4%
SBI Life	20-May-20	715	1293	80.8%
Shree Renuka Sugars Limited	13-Aug-21	27	63	135.1%
Spectrum Electrical	18-Apr-22	98	103	5.0%



**Weekly Expiry Most Active Nifty Call Option**

Symbol	Expiry Date	Strike Price	Highest Open Interest (Contracts)
NIFTY	21-Sep-2023	20,200	1,31,727
NIFTY	21-Sep-2023	20,300	1,02,981
NIFTY	21-Sep-2023	20,500	99,967

**Weekly Expiry Most Active Nifty Put Option**

Symbol	Expiry Date	Strike Price	Highest Open Interest (Contracts)
NIFTY	21-Sep-2023	20,100	1,39,901
NIFTY	21-Sep-2023	20,000	1,17,368
NIFTY	21-Sep-2023	20,200	91,994

**Securities in Ban For Trade Date: 18-09-2023**
**IBULHSGFIN, HINDCOPPER, INDIACEM, MANAPPURAM, IEX, RECLTD, BALRAMCHIN, BHEL, ZEEL, CHAMBLFERT**
**Bulk Deals (BSE)**

Deal Date	Scrip Name	Client Name	Deal Type	Quantity	Price
15-Sep-23	AVL	HDFC MUTUAL FUND	BUY	500003	2,199.74
15-Sep-23	AVL	SUNITA SINHA	SELL	500000	2,203.02
15-Sep-23	AVL	NISHANT PRABHAKAR	SELL	148271	2,200.85

**Bulk Deals (NSE)**

Deal Date	Scrip Name	Client Name	Deal Type	Quantity	Price
15-Sep-23	360ONE	BNP PARIBAS ARBITRAGE	BUY	420	541.05
15-Sep-23	DATAPATTNS	VANGUARD EMERGING MARKETS STOCK INDEX FUND	BUY	312250	2,075.54
15-Sep-23	DATAPATTNS	VANGUARD TOTAL INTERNATIONAL STOCK INDEX FUND	BUY	325105	2,075.54
15-Sep-23	DATAPATTNS	BNP PARIBAS ARBITRAGE	BUY	63	2,091.27
15-Sep-23	FIVESTAR	SMALLCAP WORLD FUND INC	BUY	3018700	700.15
15-Sep-23	HSCL	VANGUARD EMERGING MARKETS STOCK INDEX FUND	BUY	2526447	241.82
15-Sep-23	HSCL	VANGUARD TOTAL INTERNATIONAL STOCK INDEX FUND	BUY	2653602	241.82
15-Sep-23	IONEXCHANG	BNP PARIBAS ARBITRAGE	BUY	126312	523.31
15-Sep-23	MTARTECH	BNP PARIBAS ARBITRAGE	BUY	2672	2,653.49
15-Sep-23	MTARTECH	VANGUARD TOTAL INTERNATIONAL STOCK INDEX FUND	BUY	230908	2,608.06
15-Sep-23	MTARTECH	VANGUARD EMERGING MARKETS STOCK INDEX FUND	BUY	198359	2,608.06
15-Sep-23	NAZARA	VANGUARD EMERGING MARKETS STOCK INDEX FUND	BUY	345792	838.16
15-Sep-23	NAZARA	VANGUARD TOTAL INTERNATIONAL STOCK INDEX FUND	BUY	398217	838.16
15-Sep-23	OLECTRA	THE VANGUARD GROUP INC AC VANGUARD TOTAL	BUY	528904	1253.81
15-Sep-23	OLECTRA	VANGUARD EMERGING MARKETS STOCK INDEX FUND	BUY	522333	1253.81
15-Sep-23	RAINBOW	BNP PARIBAS ARBITRAGE	BUY	1568	1025.22
15-Sep-23	RBA	TATA MUTUAL FUND	BUY	12500300	119.1
15-Sep-23	RBA	PLUTUS WEALTH MANAGEMENT LLP	BUY	30000000	119.1
15-Sep-23	RBA	TD EMERGING MARKETS FUND	BUY	4000100	119.1

Deal Date	Scrip Name	Client Name	Deal Type	Quantity	Price
15-Sep-23	RBA	FRANKLIN SINGAPORE 3 BANKEN ASIA STOCK-MIX	BUY	8260858	119.10
15-Sep-23	RBA	PLUTUS WEALTH MANAGEMENT LLP	BUY	4000000	119.10
15-Sep-23	RKFORGE	THE VANGUARD GROUP INC AC VANGUARD TOTAL	BUY	1060866	691.78
15-Sep-23	RKFORGE	VANGUARD EMERGING MARKETS STOCK INDEX FUND	BUY	1001635	691.78
15-Sep-23	SATIN	EVLI EMERGING FRONTIER FUND	BUY	513714	237.45
15-Sep-23	SESCO	BNP PARIBAS ARBITRAGE	BUY	27	434.90
15-Sep-23	TMB	BNP PARIBAS ARBITRAGE	BUY	487	534.40
15-Sep-23	USHAMART	BNP PARIBAS ARBITRAGE	BUY	31721	341.23
15-Sep-23	360ONE	BNP PARIBAS ARBITRAGE	SELL	1990237	526.78
15-Sep-23	APARINDS	BNP PARIBAS ARBITRAGE	SELL	288194	5,191.26
15-Sep-23	DATAPATTNS	BNP PARIBAS ARBITRAGE	SELL	529481	2,071.24
15-Sep-23	FIVESTAR	SCHF PV MAURITIUS LIMITED	SELL	3018700	700.15
15-Sep-23	GISOLUTION	G G ENGINEERING LIMITED	SELL	1531377	12.21
15-Sep-23	HSCL	BNP PARIBAS ARBITRAGE	SELL	4195049	241.14
15-Sep-23	IONEXCHANG	BNP PARIBAS ARBITRAGE	SELL	956811	521.03
15-Sep-23	KIRLOSENG	BNP PARIBAS ARBITRAGE	SELL	995643	484.41
15-Sep-23	MTARTECH	BNP PARIBAS ARBITRAGE	SELL	316837	2601.65
15-Sep-23	NAZARA	BNP PARIBAS ARBITRAGE	SELL	557369	835.56
15-Sep-23	NSLNISP	BNP PARIBAS ARBITRAGE	SELL	20720413	54.07
15-Sep-23	OLECTRA	BNP PARIBAS ARBITRAGE	SELL	500199	1249.81
15-Sep-23	RAINBOW	BNP PARIBAS ARBITRAGE	SELL	655246	1023.22
15-Sep-23	RBA	QSR ASIA PTE LTD	SELL	125441820	119.1
15-Sep-23	RKFORGE	BNP PARIBAS ARBITRAGE	SELL	1584659	686.37
15-Sep-23	SAFARI	BNP PARIBAS ARBITRAGE	SELL	144186	3510.25
15-Sep-23	SESCO	BNP PARIBAS ARBITRAGE	SELL	419468	456.76
15-Sep-23	TITAGARH	BNP PARIBAS ARBITRAGE	SELL	821841	778.07
15-Sep-23	TMB	BNP PARIBAS ARBITRAGE	SELL	1071919	543.46
15-Sep-23	USHAMART	BNP PARIBAS ARBITRAGE	SELL	2135751	345.33
15-Sep-23	RBA	AMAL N.PARIKH	BUY	5090000	119.1
15-Sep-23	RBA	QUANT MUTUAL FUND	BUY	14000400	119.1
15-Sep-23	RBA	ICICI PRUDENTIAL LIFE INSURANCE COMPANY LTD	BUY	34000500	119.1
15-Sep-23	RBA	GOLDMAN SACHS FUNDS-GOLDMAN SACHS ASIA	BUY	6500100	119.1

**Note- Executed on 15<sup>th</sup> Sep 2023. Bulk Deal Buy/Sell done by fund house is considered.**

Research Analyst Registration No.	Contact	Website	mail Id
INH000002764	SMS: 'Arihant' to 56677	<a href="http://www.arihantcapital.com">www.arihantcapital.com</a>	<a href="mailto:arihant.research@arihantcapital.com">arihant.research@arihantcapital.com</a>

**Arihant is Forbes Asia’s ‘200 Best under a \$Billion’ Company  
‘Best Emerging Commodities Broker’ awarded by UTV Bloomberg**

**Disclaimer:** This document has been prepared by Arihant Capital Markets Limited (hereinafter called as Arihant) and its subsidiaries and associated companies. This document does not constitute an offer or solicitation for the purchase and sale of any financial instrument by Arihant. Receipt and review of this document constitutes your agreement not to circulate, redistribute, retransmit or disclose to others the contents, opinions, conclusion, or information contained herein. This document has been prepared and issued on the basis of publicly available information, internally developed data and other sources believed to be reliable. Whilst meticulous care has been taken to ensure that the facts stated are accurate and opinions given are fair and reasonable, neither the analyst nor any employee of our company is in any way is responsible for its contents and nor is its accuracy or completeness guaranteed. This document is prepared for assistance only and is not intended to be and must not alone be taken as the basis for an investment decision. All recipients of this material should before dealing and or transacting in any of the products referred to in this material make their own investigation, seek appropriate professional advice. The investments discussed in this material may not be suitable for all investors. The recipient alone shall be fully responsible/are liable for any decision taken on the basis of this material. Arihant Capital Markets Ltd (including its affiliates) or its officers, directors, personnel and employees, including persons involved in the preparation or issuance of this material may; (a) from time to time, have positions in, and buy or sell or (b) be engaged in any other transaction and earn brokerage or other compensation in the financial instruments/products discussed herein or act as advisor or lender/borrower in respect of such securities/financial instruments/products or have other potential conflict of interest with respect to any recommendation and related information and opinions. The said persons may have acted upon and/or in a manner contradictory with the information contained here and may have a position or be otherwise interested in the investment referred to in this document before its publication. The user of this report assumes the entire risk of any use made of this data/report. Arihant especially states that it has no financial liability, whatsoever, to the users of this report.

**Arihant Capital Markets Ltd**  
 #1011 Solitaire Corporate Park Building No.10 1<sup>st</sup> Floor  
 Andheri Ghatkopar Link Road Chakala Andheri (E) Mumbai-400093  
 T. 022-42254800. Fax: 022-42254880  
[www.arihantcapital.com](http://www.arihantcapital.com)