

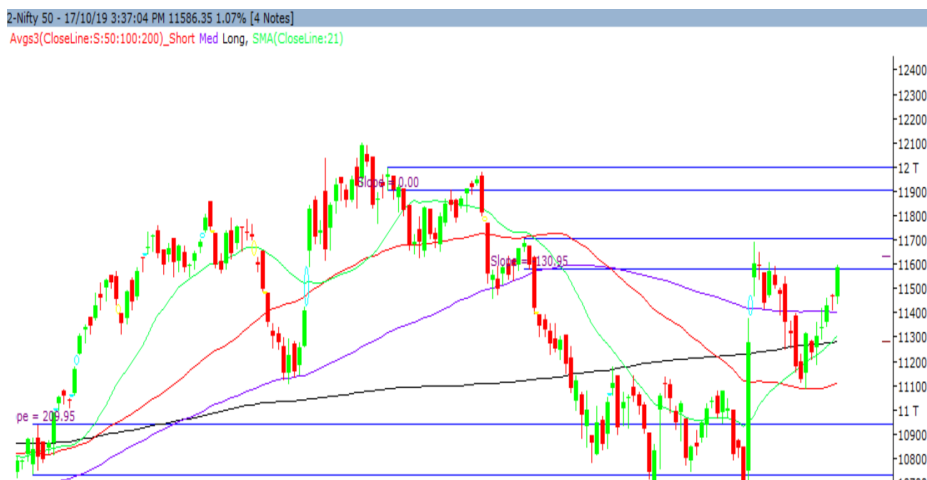
Friday, 18th October, 2019

Indian Indices	Last Price	(%) Chg
BSE	39052.06	1.17
NSE	11586.35	1.07
World Indices		
Dow Jones	27025.88	0.09
Nasdaq	8156.85	0.40
Nikkei	22579.96	0.56
Hang Seng	26842.27	-0.02
FTSE	7182.32	0.20
Commodity	Last Price	(%) Chg
GOLD(\$/ounce)	1495.80	-0.17
Silver (\$/Ounce)	17.56	-0.32
Crude (\$/BBL)	59.63	-0.47
Aluminium spot (\$/mt)	1725.25	-0.22
Copper SPOT (\$/mt)	5749.25	0.00
Lead Spot (\$/MT)	2184.50	-0.09
Natural gas \$/MMBtu	2.32	0.09
Currency	Last Price	(%) Chg
USD-INR	71.23	-0.42
EUR-INR	79.26	0.39
Bond	Last Price	(%) Chg
India 10 Yr Bond yield	6.82	2.47

52 Wk High (A group)			52 Wk Low (A group)		
Company	Close Price	52 Wk High	Company	Close Price	52 Wk Low
ATUL	4203	4219	IBULHSG	197	165
BAJAJFIN	4095	4115	WABAG	189	167
BERGERP	486	490	--	--	--
GLAXO	8890	8933	--	--	--
HUL	2107	2108	--	--	--

Source: BSE

Market Technical Outlook



Nifty opened on a subdued note but momentum on the upside intensified as the day progressed which led the indices to close near days high. On the daily chart, we are observing strong bull candle which suggests that momentum on the upside is likely to continue. We still maintain our stance that stock specific activity is likely to continue going ahead.

In coming trading session if Nifty opens in the range of 11567 – 11524 then, go long, with a stop loss of 11460 for a target of 11623 – 11647 - 11684 levels.

News for stocks

CIPLA	Company has acquired a novel and patented anti-infective product, Elores, from Venus Remedies Ltd (VRL) for the Indian market.
AUROBINDO PHARMA	Aurobindo Pharma gets US FDA nod for Naloxone Hydrochloride injection
TVS MOTORS	Company reported Q2FY20 standalone revenue of Rs. 43,478 mn registering de-growth of ~12.9% / 2.7% YoY / QoQ respectively.

Foreign Institutional Investments (FII's) Activities

Name of Segment	Net Buyer/seller	Rs In Cr
Index Futures	Net Buy	793.86
Stock Futures	Net Buy	1235.35
Net Future Position	Net Buy	2029.21
Index Options	Net Buy	4583.18
Stock Options	Net Buy	24.26
Net Options Position	Net Buy	4607.44
FII In cash Segment	Net Buy	1158.63
DII In cash Segment	Net Buy	-511.76
Net Cash Position	Net Buy	646.87

Technical Levels for Nifty 50 Companies

Company	Closing 17-10-2019	Buy/Sell Trigger	Resistance 1	Resistance 2	Support 1	Support 2
ADANI PORTS	409.15	408.32	412.03	414.92	405.43	401.72
ASIAN PAINT	1812.30	1794.98	1833.97	1855.63	1773.32	1734.33
AXIS BANK	710.30	704.40	718.30	726.30	696.40	682.50
BAJAJ-AUTO	3111.50	3082.17	3169.33	3227.17	3024.33	2937.17
BAJAJ FINSV	8316.65	8258.68	8415.37	8514.08	8159.97	8003.28
BAJ FINANCE	4106.80	4075.00	4149.00	4191.20	4032.80	3958.80
BHARTIARTL	385.85	384.13	389.22	392.58	380.77	375.68
BPCL	513.30	510.90	517.70	522.10	506.50	499.70
BRITANNIA	3247.85	3224.73	3289.47	3331.08	3183.12	3118.38
CIPLA	446.30	444.47	449.53	452.77	441.23	436.17
COALINDIA	199.40	197.42	201.93	204.47	194.88	190.37
DRREDDY	2727.40	2720.13	2741.27	2755.13	2706.27	2685.13
EICHERMOT	20491.85	20245.28	21035.57	21579.28	19701.57	18911.28
GAIL	128.75	127.88	129.92	131.08	126.72	124.68
GRASIM	724.55	722.47	732.93	741.32	714.08	703.62
HCLTECH	1093.05	1093.27	1101.98	1110.92	1084.33	1075.62
HDFC	2089.75	2078.28	2106.47	2123.18	2061.57	2033.38
HDFC BANK	1220.00	1220.98	1228.87	1237.73	1212.12	1204.23
HEROMOTOCO	2629.20	2618.40	2654.80	2680.40	2592.80	2556.40
HINDALCO	188.80	187.03	191.52	194.23	184.32	179.83
HINDUNILVR	2103.85	2091.27	2120.58	2137.32	2074.53	2045.22
ICICIBANK	440.60	439.22	444.73	448.87	435.08	429.57
INDUSINDBK	1340.10	1318.37	1366.73	1393.37	1291.73	1243.37
INFRA TEL	256.95	256.15	258.75	260.55	254.35	251.75
INFY	769.50	768.38	771.67	773.83	766.22	762.93
IOC	146.40	145.72	147.68	148.97	144.43	142.47
ITC	245.85	245.47	247.08	248.32	244.23	242.62
JSWSTEEL	222.95	220.67	226.98	231.02	216.63	210.32
KOTAK BANK	1604.55	1601.55	1616.60	1628.65	1589.50	1574.45
LT	1424.35	1427.72	1435.23	1446.12	1416.83	1409.32
M&M	593.30	589.47	600.18	607.07	582.58	571.87
MARUTI	7123.90	7073.15	7206.30	7288.70	6990.75	6857.60
NESTLEIND	14516.85	14435.73	14711.47	14906.08	14241.12	13965.38
NTPC	118.70	118.28	119.62	120.53	117.37	116.03
ONGC	141.40	140.82	142.48	143.57	139.73	138.07
POWERGRID	197.70	197.98	199.47	201.23	196.22	194.73
RELIANCE	1396.50	1389.17	1406.33	1416.17	1379.33	1362.17
SBIN	265.45	262.35	269.10	272.75	258.70	251.95
SUNPHARMA	401.50	400.28	403.77	406.03	398.02	394.53
TATAMOTORS	139.50	136.32	147.53	155.57	128.28	117.07
TATASTEEL	356.10	352.60	364.85	373.60	343.85	331.60
TCS	2030.95	2022.75	2046.20	2061.45	2007.50	1984.05
TECHM	724.35	723.77	731.58	738.82	716.53	708.72
TITAN	1277.05	1277.90	1284.70	1292.35	1270.25	1263.45
ULTRACEMCO	4260.45	4253.83	4286.62	4312.78	4227.67	4194.88
UPL	591.95	588.67	596.98	602.02	583.63	575.32
VEDL	148.30	147.58	150.42	152.53	145.47	142.63
WIPRO	247.85	248.20	249.80	251.75	246.25	244.65
YES BANK	47.40	45.43	50.17	52.93	42.67	37.93
ZEEL	264.45	264.75	273.70	282.95	255.50	246.55

(Source – IRIS)

Guru Call: From the expert's desk

Company	Reco Date	Reco Price (Buy on dips)	High till date	Return%
Asian Paints Ltd.	30-Mar-17	1068.10	1820.00	70.40%
Avenue Supermarts Ltd.	31-Jul-17	898.55	1945.00	116.46%
Axis Bank Ltd.	10-Apr-18	519.30	827.75	59.40%
Bajaj Finance Ltd.	11-Oct-18	2271.00	4070.00	79.22%
Bajaj Finserv Ltd	1-Nov-16	3416.80	8668.00	153.69%
Bajaj Holdings And Investment Ltd	19-May-16	1499.10	3800.00	153.49%
Bandhan Bank Ltd.	19-Dec-18	556.40	636.30	14.36%
Century Textile and Industries Ltd	25-Nov-16	739.30	1471.00	98.97%
Cipla Ltd	20-Mar-17	597.30	678.50	13.59%
Colgate Palmolive	16-Sep-19	1314.00	1589.00	20.93%
DLF Ltd	10-Apr-19	194.30	209.65	7.90%
Emami Limited	26-Jun-19	290.35	343.00	18.13%
Godrej Industries Ltd.	12-Feb-18	550.70	657.60	19.41%
Godrej Properties Ltd.	19-Dec-18	685.30	1119.60	63.37%
Grasim Industries Ltd.	31-May-17	1132.50	1331.00	17.53%
Havells India Ltd.	8-Dec-17	525.75	806.85	53.47%
Housing Development Finance Corp Ltd	19-Dec-17	1720.00	2357.85	37.08%
HDFC Asset Management Company Ltd.	19-Dec-18	1572.90	2975.00	89.14%
HDFC Bank Limited	10-Nov-16	639.00	1282.00	100.63%
HDFC Life Insurance Co Ltd	19-Jan-18	485.05	609.00	25.55%
Hindustan Unilever Ltd.	13-Nov-17	1290.70	2100.00	62.70%
ICICI Bank Ltd.	6-Apr-18	278.65	458.00	64.36%
ICICI Prudential Life Insurance Company Ltd.	28-Jun-18	375.80	474.00	26.13%
ICICI Lombard General Insurance	19-Sep-19	1154.85	1284.00	11.18%
Infosys Ltd.	17-Aug-17	487.60	847.00	73.71%
Kotak Mahindra Bank Ltd	10-Nov-16	822.10	1683.00	104.72%
Mahindra & Mahindra Ltd.	5-Jun-17	709.25	993.00	40.01%
Manappuram Finance Ltd.	24-Apr-18	119.20	145.00	21.64%
Marico Ltd.	4-Apr-18	325.00	404.00	24.31%
Nestle India Ltd.	27-Sep-18	9729.40	14144.00	45.37%
Oberoi Realty Ltd.	23-Nov-17	508.60	641.70	26.17%
Phoenix Mills Limited	7-Jul-19	655.15	767.00	17.07%
Pidilite Industries Limited	4-Oct-16	681.60	1493.00	119.04%
Prestige Estates Projects Limited	6-Jun-19	286.70	317.00	10.57%
Rites Ltd.	19-Dec-18	226.96	281.00	23.81%
State Bank Of India	28-Aug-18	308.00	373.80	21.36%
Tata Global Beverages Ltd.	29-Jun-17	149.15	328.80	120.45%
Tata Consultancy Services Ltd.	8-Jan-18	1344.60	2296.00	70.76%
Trent Ltd.	19-Dec-18	348.40	529.00	51.84%
Ultratech Cement Ltd.	19-Dec-18	4084.60	4904.00	20.06%
Voltas Ltd.	27-Mar-18	613.90	705.00	14.84%
Whirlpool Of India Ltd.	7-Dec-16	872.25	1981.00	127.11%

Securities in Ban For Trade Date 18-10-2019

NIL.

NIFTY 50 STOCKS BELOW 200SMA

SCRIP NAME	SMA 200	CLOSING (17-10-2019)
WIPRO	267.02	247.85
ZEEL	378.35	264.45
ITC	276.03	245.85
TATASTEEL	460.42	356.1
SBIN	306.13	265.45
GRASIM	809.05	724.55
TATAMOTORS	163.42	139.5
CIPLA	520.43	446.3
M&M	631.85	593.3
HINDALCO	198.37	188.8
HEROMOTOCO	2670.81	2629.2
SUNPHARMA	426	401.5
AXISBANK	719.7	710.3
ONGC	148.68	141.4
VEDL	166.38	148.3
GAIL	156.12	128.75
INDUSINDBK	1501.31	1340.1
TCS	2088.09	2030.95
TECHM	737.39	724.35
JSWSTEEL	264.86	222.95
NTPC	125.74	118.7
YESBANK	149.35	47.4
COALINDIA	226.77	199.4
INFRATEL	277.01	256.95

Bulk Deals (BSE)

N.A

Bulk Deals (NSE)

Deal Date	Scrip Name	Client Name	Deal Type	Quantity	Price
17-Oct-19	Reliance Capital Limited	AXIS TRUSTEE SERVICES LIMITED	SELL	1300000	12.71

 Note- Executed on 17th Oct 2019. Bulk Deal Buy/Sell done by fund house is considered.

Weekly Expiry Most Active Nifty Call Option

Symbol	Expiry Date	Strike Price	Highest Open Interest (OI)
NIFTY	24-Oct-19	11500	882600
NIFTY	24-Oct-19	11700	862350
NIFTY	24-Oct-19	11600	850575

Weekly Expiry Most Active Nifty Put Option

Symbol	Expiry Date	Strike Price	Highest Open Interest (OI)
NIFTY	24-Oct-19	11500	1156575
NIFTY	24-Oct-19	11400	1045425
NIFTY	24-Oct-19	10700	846675

Research Analyst Registration No.

INH000002764

Contact

SMS: 'Arihant' to 56677

Website

www.arihantcapital.com

mail Id

arihant.research@arihantcapital.com

**Arihant is Forbes Asia's '200 Best under a \$Billion' Company
'Best Emerging Commodities Broker' awarded by UTV Bloomberg**

Disclaimer: This document has been prepared by Arihant Capital Markets Limited (hereinafter called as Arihant) and its subsidiaries and associated companies. This document does not constitute an offer or solicitation for the purchase and sale of any financial instrument by Arihant. Receipt and review of this document constitutes your agreement not to circulate, redistribute, retransmit or disclose to others the contents, opinions, conclusion, or information contained herein. This document has been prepared and issued on the basis of publicly available information, internally developed data and other sources believed to be reliable. Whilst meticulous care has been taken to ensure that the facts stated are accurate and opinions given are fair and reasonable, neither the analyst nor any employee of our company is in any way is responsible for its contents and nor is its accuracy or completeness guaranteed. This document is prepared for assistance only and is not intended to be and must not alone be taken as the basis for an investment decision. All recipients of this material should before dealing and or transacting in any of the products referred to in this material make their own investigation, seek appropriate professional advice. The investments discussed in this material may not be suitable for all investors. The recipient alone shall be fully responsible/are liable for any decision taken on the basis of this material. Arihant Capital Markets Ltd (including its affiliates) or its officers, directors, personnel and employees, including persons involved in the preparation or issuance of this material may; (a) from time to time, have positions in, and buy or sell or (b) be engaged in any other transaction and earn brokerage or other compensation in the financial instruments/products discussed herein or act as advisor or lender/borrower in respect of such securities/financial instruments/products or have other potential conflict of interest with respect to any recommendation and related information and opinions. The said persons may have acted upon and/or in a manner contradictory with the information contained here and may have a position or be otherwise interested in the investment referred to in this document before its publication. The user of this report assumes the entire risk of any use made of this data/report. Arihant especially states that it has no financial liability, whatsoever, to the users of this report.

Arihant Capital Markets Ltd

#1011 Solitaire Corporate Park Building No.10 1st Floor
 Andheri Ghatkopar Link Road Chakala Andheri (E) Mumbai-400093
 T. 022-42254800. Fax: 022-42254880
www.arihantcapital.com